

# Downtown Meter Rate Adjustment Council Hearing

December 17, 2015

WE KEEP PORTLAND *MOVING*.



**PBOT**  
PORTLAND BUREAU OF TRANSPORTATION

# Summary of Parking Recommendations

## **Primary Recommendation (Council action)**

- Increase hourly meter rate to \$2.00
  - *Implement after 2015 holiday shopping season*

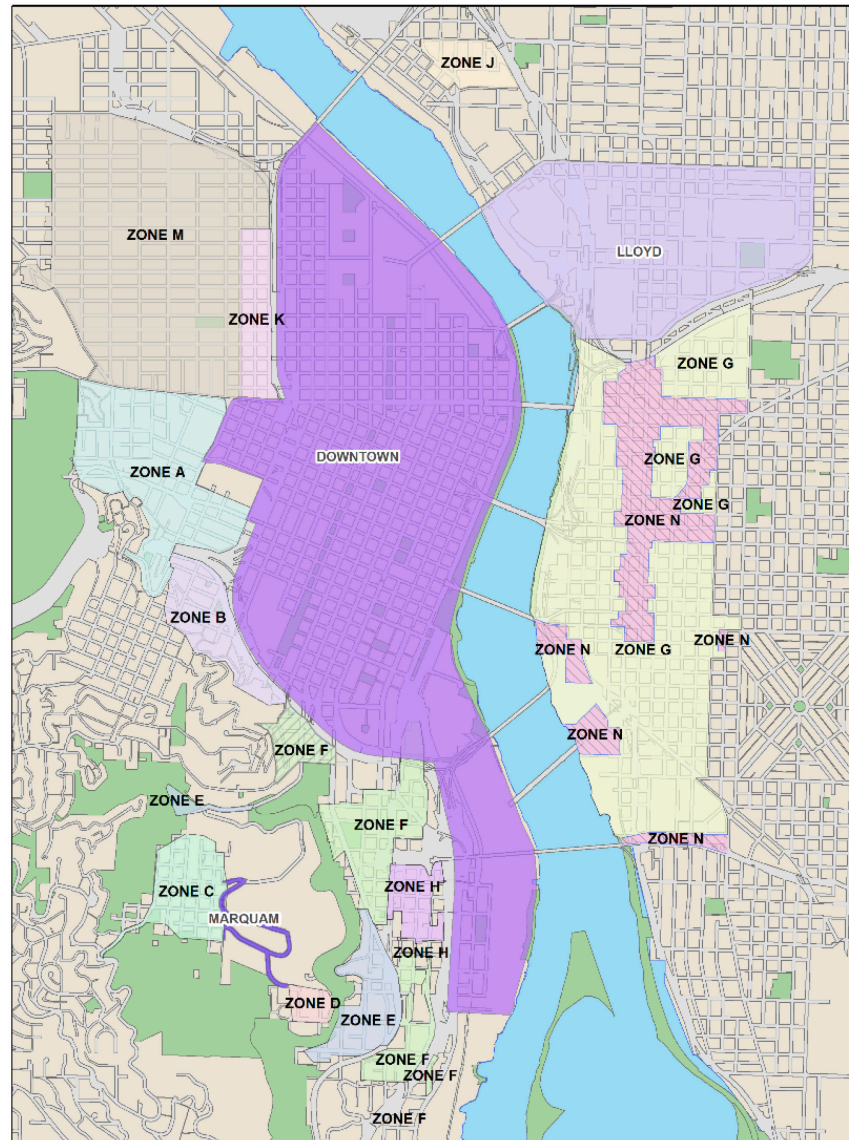
## **Secondary Recommendations**

- Move to a performance based parking management approach
- Adjust on-street time limits
- Create more customer parking capacity at Old Town SmartPark

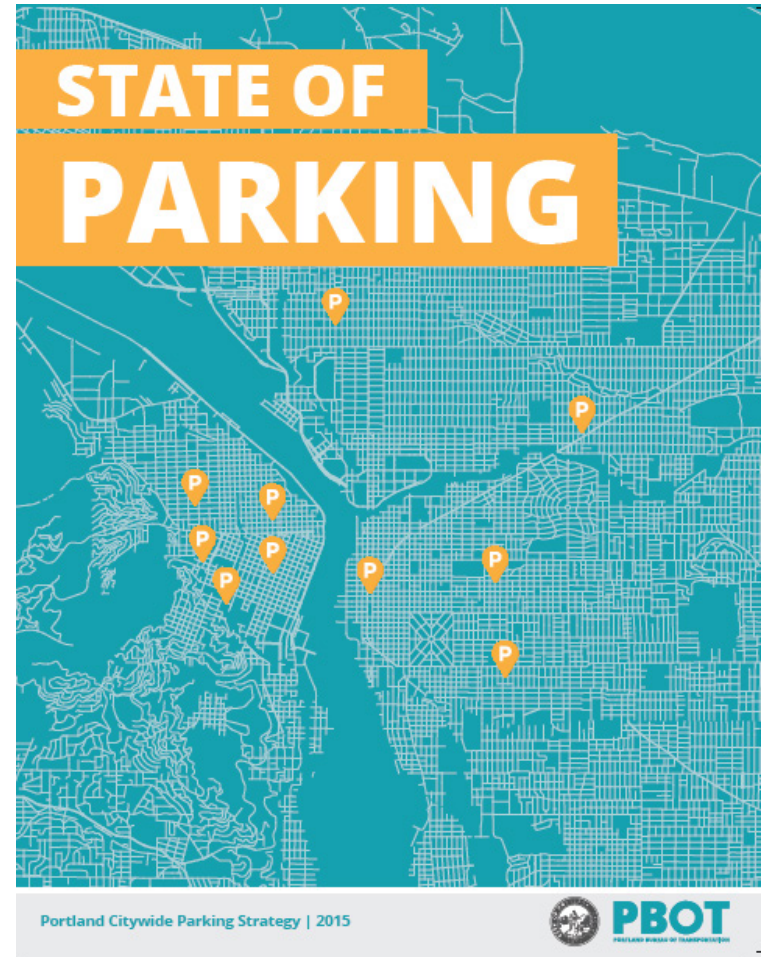
## **Equity Impact Option (in development)**

- Reduced cost SmartPark pass
- Staff will engage SEIU and other potential partners

# Downtown Meter District



# Central City Parking Policy Update



# Subcommittee Formation

## Central City Parking Policy Update SAC Direction

**Question:** What role does the Committee wish to participate in a Near-Term Meter Rate adjustment process?

1. Add this to their policy-focused scope
- 2. Appoint a subcommittee**
3. Decline an official role

# Subcommittee Membership

- The Portland Business Alliance/Pioneer Place
- South Waterfront Community Relations
- Old Town/Chinatown Community Association
- Pearl District Neighborhood Association
- Downtown Neighborhood Association
- Housing Land Advocates
- Goose Hollow residents
- Portland State University
- SP+ SmartPark Operator
- Service Employees International Union (SEIU) Local 49
- Citizen-at-Large
- Office of Management and Finance

# Current Portland Meter District Policy

## Purpose statement

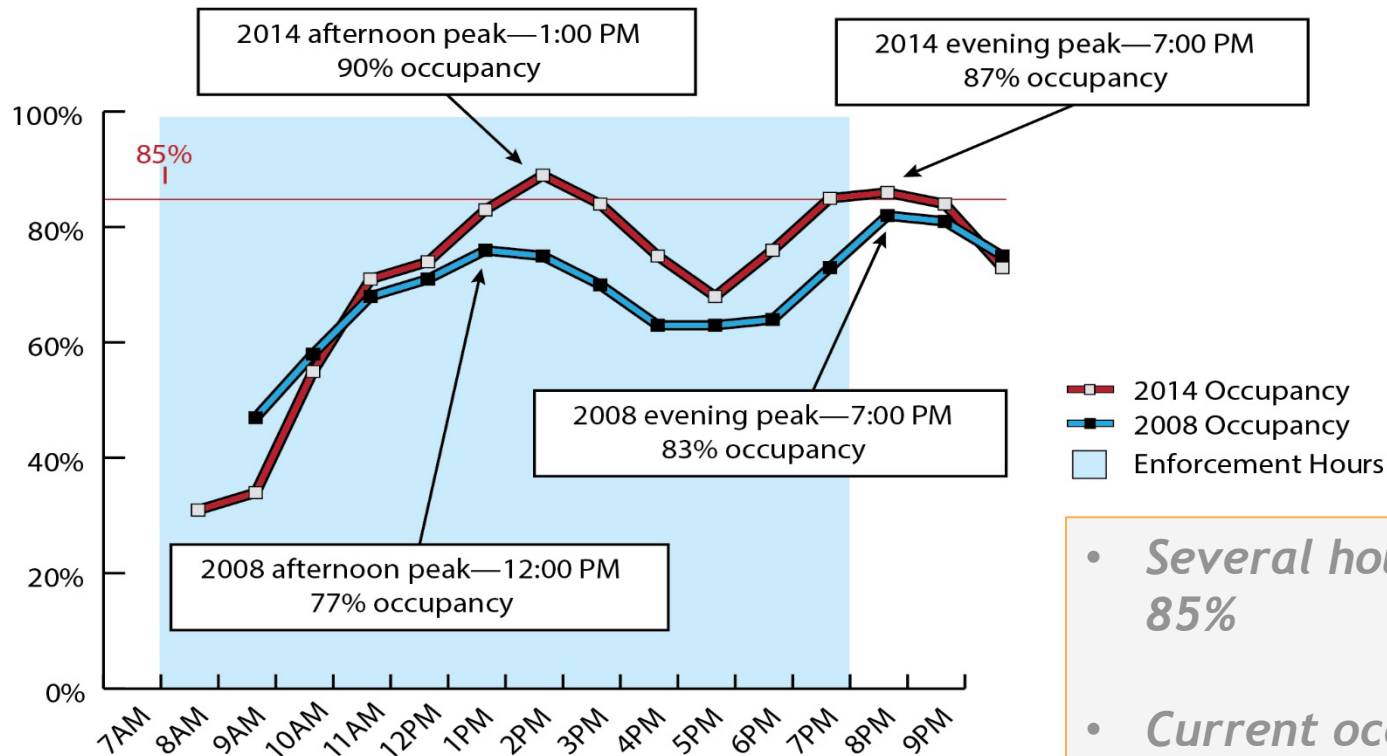
“...the on-street parking system in commercial districts is managed to support the economic vitality of the district by

- encouraging parking turnover,
- improving circulation,
- encouraging use of off-street parking,
- maintaining air quality, and
- promoting the use of alternative modes....”

# On-street Parking Performance Measures

- Occupancy – 85% is parking nirvana
  - Parking is active, well used
  - There's still a space for the next customer!
- Duration of stay
  - Short-term parking = up to 4 hours
  - Long-term parking = longer than 4 hours

# Weekday On-Street Parking Occupancy



## Hourly Parking Occupancy

- *Several hours are over 85%*
- *Current occupancy is higher than 2008 levels for most of the study period.*

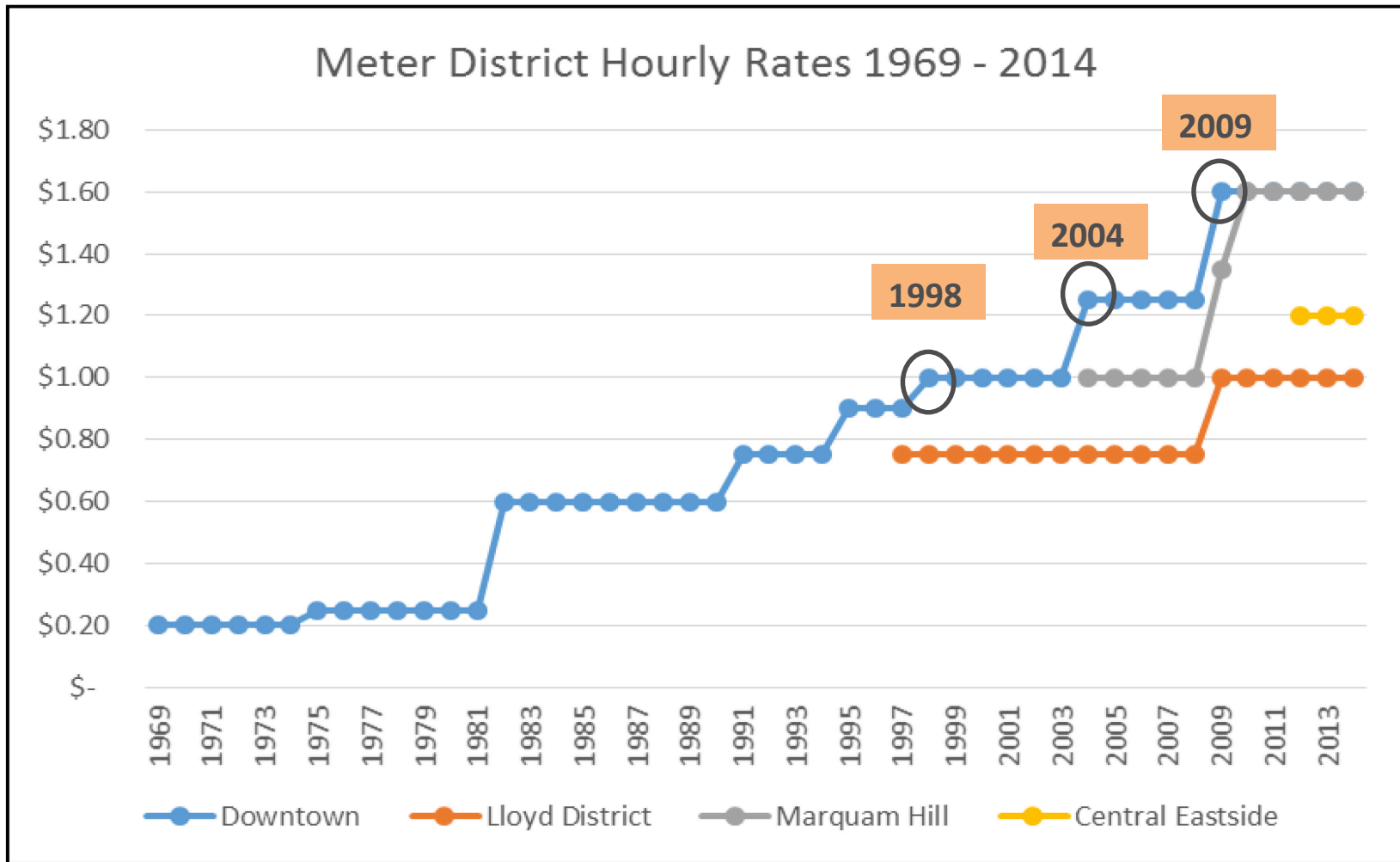
# Impacts of Underpriced Parking

Drivers are circling the blocks, looking for parking

- Poor customer experience
- Added traffic congestion and emissions
- Added conflicts at intersections

*Estimates: Roughly 1/3 of downtown traffic is searching for parking!*

# History of Infrequent Price Changes

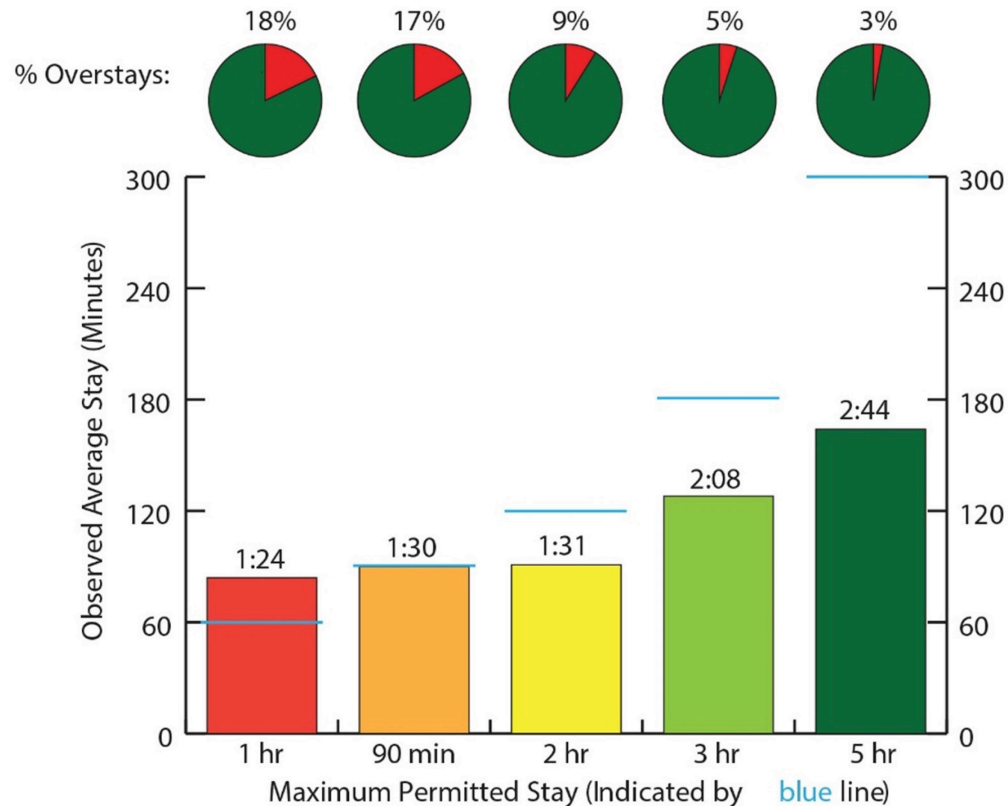


# A System Out of Balance

Duration	Smart Park (weekday)		On-Street	
	Rate (increment)	Cumulative	Rate (increment)	Cumulative
Up to 1 hour	\$1.60	\$1.60	\$1.60	\$1.60
Up to 2 hours	\$1.60	\$3.20	\$1.60	\$3.20
Up to 3 hours	\$1.80	\$5.00	\$1.60	\$4.80
Up to 4 hours	\$2.00	\$7.00	\$1.60	\$6.40
Over 5 hours	\$3 to \$8	\$10 to \$15	\$1.60	\$8.00

**Finding:** Weekday pricing structure gives on-street parking the lowest price for stays longer than 2 hours.

# Need for longer time limits

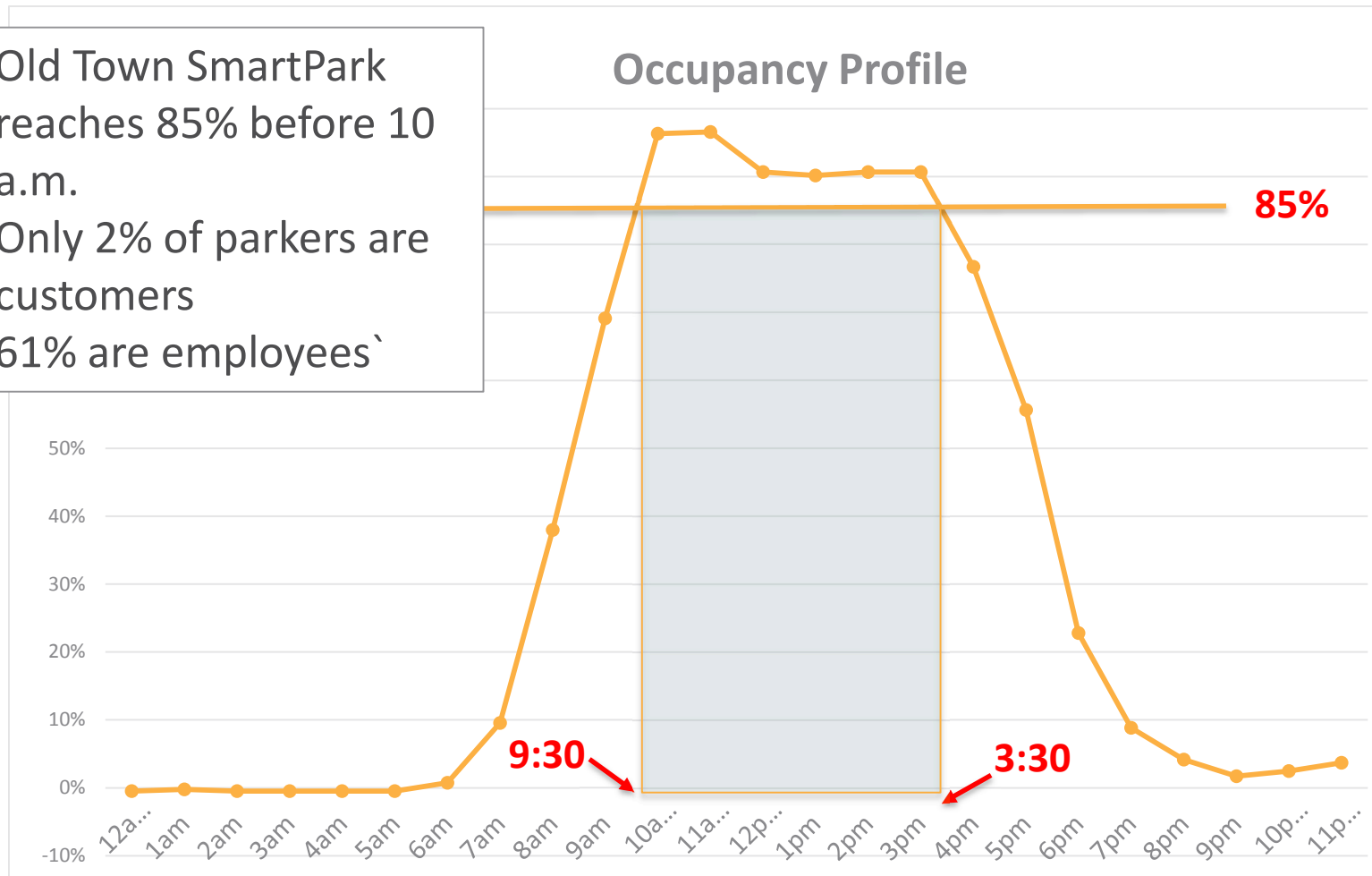


Average time stays and percentage of vehicles overstaying the time limit during metered hours

- Most short-term stays are around 1.5 hours
- Average stays are well below 3-hour or 5-hour allowed
- Large proportion of over-time stays in 1-hour & 90-minute spaces

# Old Town SmartPark Customer Parking

- Old Town SmartPark reaches 85% before 10 a.m.
- Only 2% of parkers are customers
- 61% are employees`



# Committee Recommendations

## Primary Recommendation

- Increase hourly meter rate to \$2.00
  - *Implement after 2015 holiday shopping season*

## Secondary Recommendations

- Move to a performance based parking management approach
- Adjust on-street time limits
- Create more customer parking capacity at Old Town SmartPark

# Equity Concerns

## Potential impacts to low-wage earners

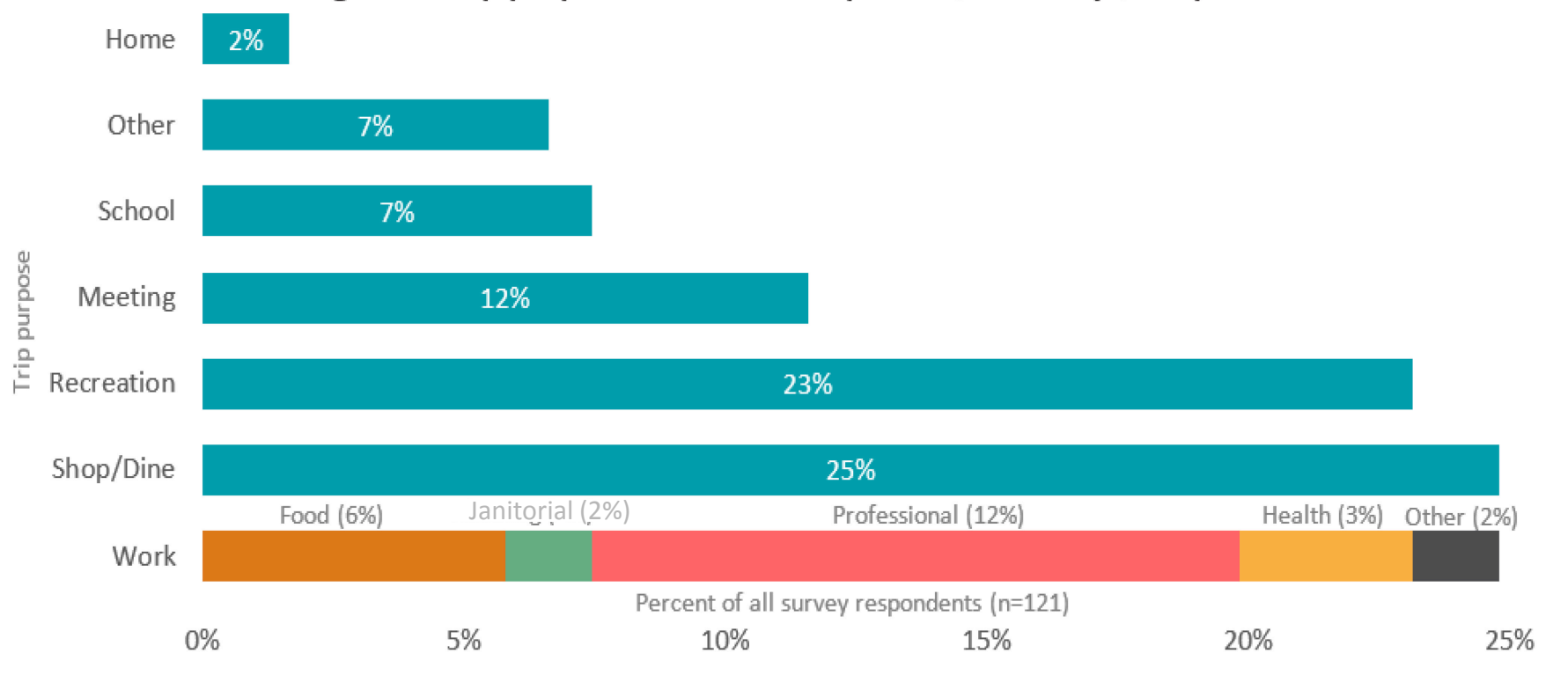
- Concerns of SEIU reps & at Council work session

## Questions to PBOT

- Who is using the on-street parking?
- Can we mitigate the impacts?

# On-street Intercept Survey

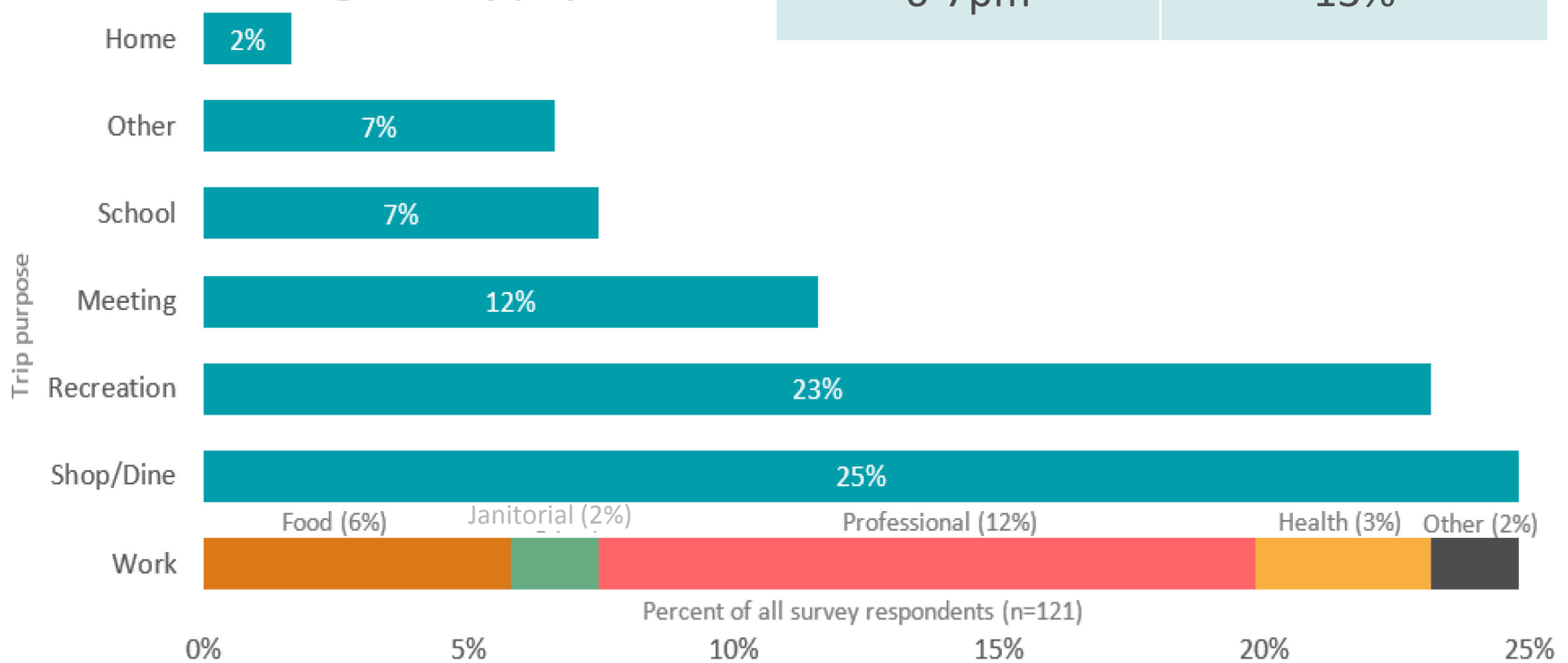
Figure 1. Trip purpose of downtown parkers, weekdays, 4-7 p.m.



# On-street Intercept Survey

Time of Survey	% Responses
4-5pm	41%
5-6pm	45%
6-7pm	13%

Figure 1. Trip purpose of downtown



# Alternative for equity impacts

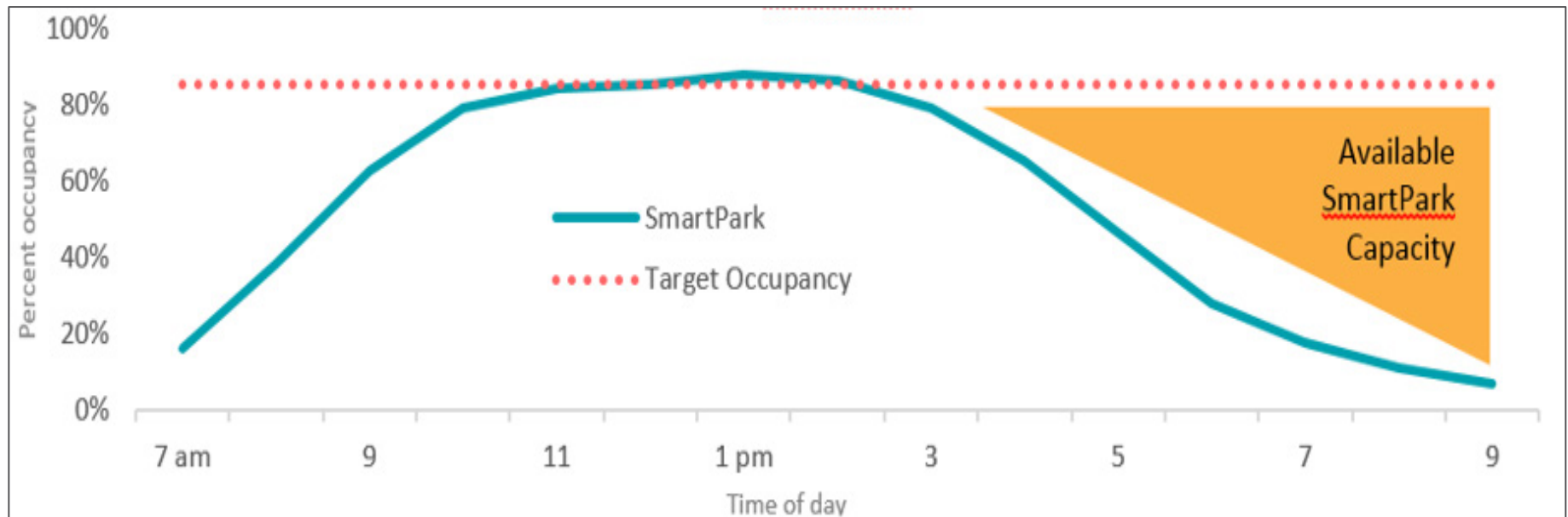
## SmartPark overnight rates

- \$5 flat rate from 5 pm - 5 am
- Exception: Old Town is \$6 on weekends



# Alternative for equity impacts

SmartPark capacity is available  
for more evening users



# Alternative for equity impacts

## Mitigating strategy

- Reduced Price SmartPark pass for low-wage, evening shift workers
- Seeking partnership with SEIU, employers

# Summary of Parking Recommendations

## Primary Recommendation (Council action)

- Increase hourly meter rate to \$2.00
  - *Implement after 2015 holiday shopping season*

## Secondary Recommendations

- Move to a performance based parking management approach
- Adjust on-street time limits
- Create more customer parking capacity at Old Town SmartPark

## Equity Impact Option (in development)

- Reduced cost SmartPark pass
- Staff will engage SEIU and other potential partners

# Questions/Discussion

WE KEEP PORTLAND *MOVING*.



**PBOT**  
PORTLAND BUREAU OF TRANSPORTATION