



The Urban Services Boundary

Portland Planning and
Sustainability Commission

September 8, 2015



Bureau of Planning and Sustainability
Innovation. Collaboration. Practical Solutions.



Overview

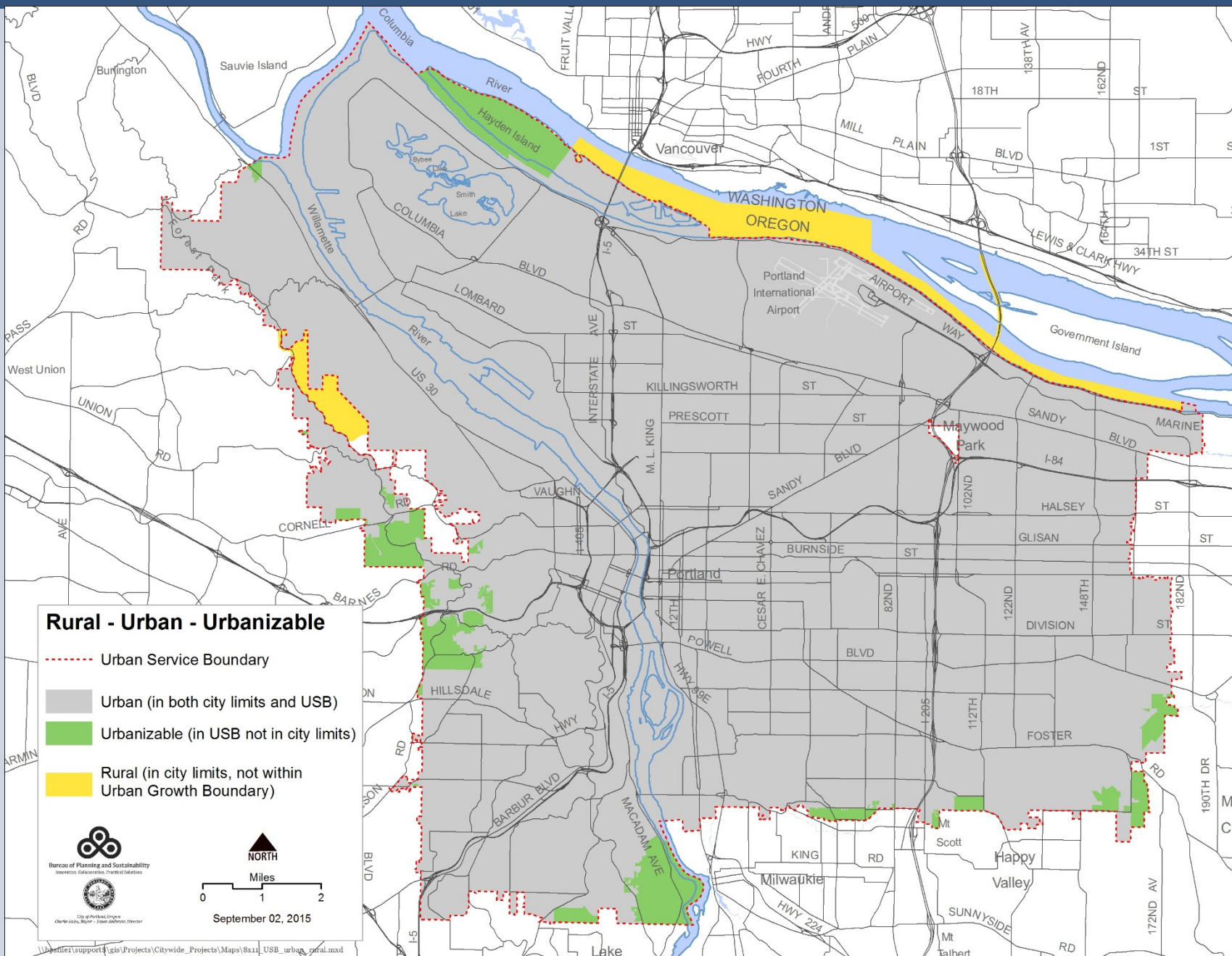
- This is a briefing, not a hearing
- Describes an approach to urbanizable land
- Asks for Commission's views on approach



Three Types of Land

- Rural Land is outside the urban growth boundary
- Urbanizable land is within the urban growth boundaries but beyond city limits
- Urban land is within both urban growth boundary and city limits





An Urban Services Boundary describes an area in which

- A county may delegate planning authority to a city.
- A city may extend its urban services and exclude urban services from other providers.
- A city may annex territory.



Status of Boundary Agreements

	Clackamas County	Multnomah County	Washington County
Reciprocal Notification Areas Mapped	Yes	Yes	Yes
Urban Service Boundary Mapped	Yes	Yes	No
Planning Authority Delegated	Partial	Extensive	None

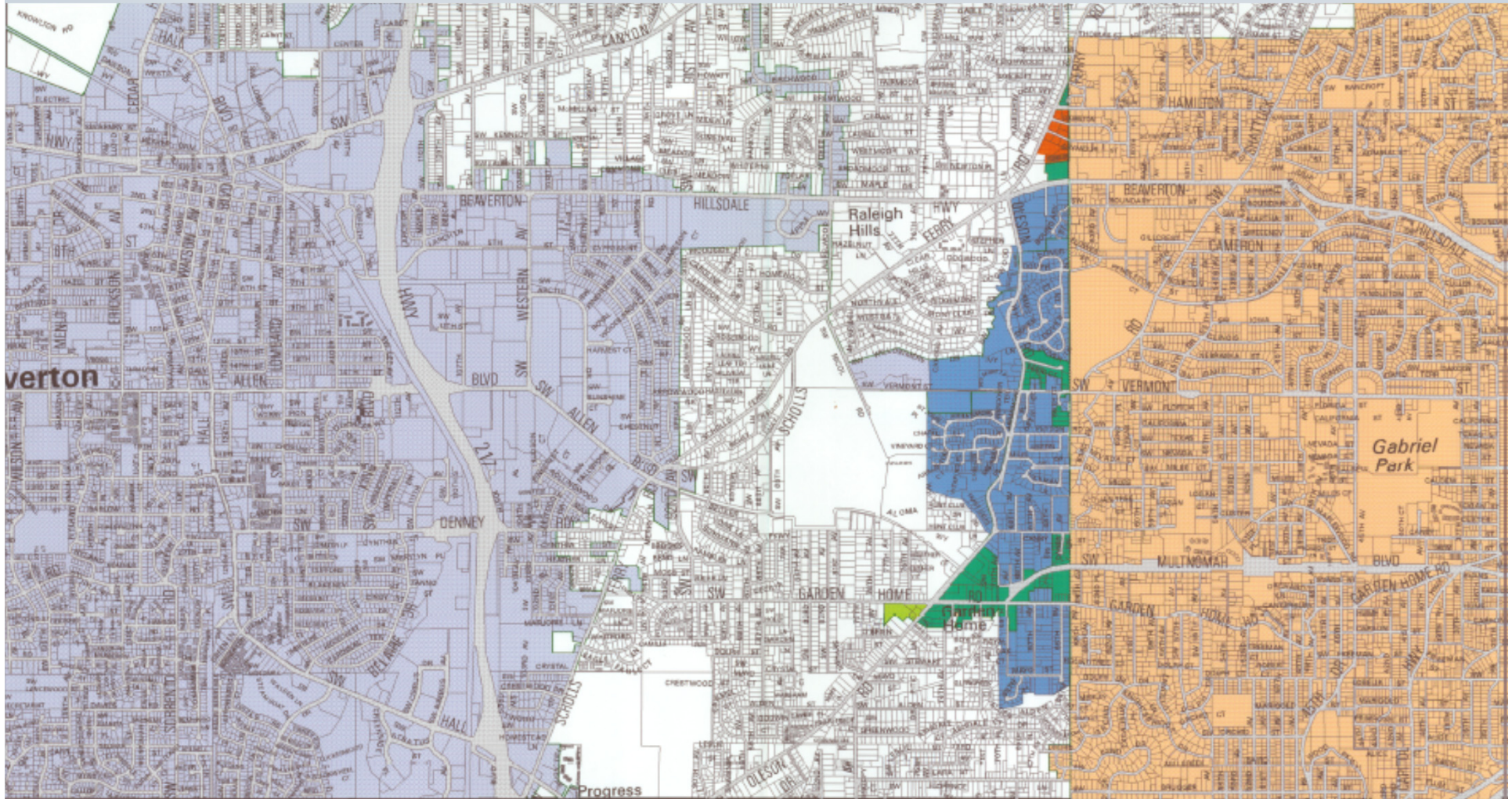


Resolution of Boundary Conflicts

- In 1993 Beaverton and Washington County and Portland adopted different boundaries.
- In 1994 All boundaries were remanded by LUBA as “uncoordinated.”
- In 1994 Court affirmed LUBA holding that Metro resolves service boundary disputes.
- In 1997 Metro Council set boundary by ordinance.



1997 Metro Ordinance Map (partial)



**Urban Services Boundary
Ordinance #96-665C**
Adopted March 6, 1997

- City Limits
- County Line
- City of Portland
- Proposed City of Portland
- City of Beaverton
- Proposed City of Beaverton
- Potential Demonstration Areas
- Regional Recreation Area per 1997 Ordinance 96-665C

The information on this map is derived from digital data from the March 1997 Census of the County of Multnomah. Many names and symbols are not shown for clarity. The information on this map is for informational purposes only. It is not intended to be used for legal purposes. The information on this map is for informational purposes only. It is not intended to be used for legal purposes.

REGIONAL LAND INFORMATION SYSTEM

800 HOPKINSHAW STREET, PORTLAND, OREGON 97202-2708
TEL: 503 787-0100 FAX: 503 787-1000
E-MAIL: csl@mapinfo.com
WWW: www.mapinfo.com

What Else We Learned

1. An urban service boundary is uncoordinated if it contains overlaps with another city's boundary, or gaps between.
2. The Metro Council cannot delegate its authority to coordinate comprehensive plans within the metropolitan region.
3. An urban service boundary is a comprehensive plan map feature
4. Our existing urban service agreements are with the wrong parties.



Four Part Approach

1. Commission has recommended a new urban services boundary.
2. New boundary to be confirmed as “coordinated” by new three party, City|City|Metro interagency agreements.
3. Amend planning agreements with counties.
4. Establish new interagency agreements with special district urban service providers.



Beaverton is the Model Agreement

INTERGOVERNMENTAL AGREEMENT

between
City of Beaverton, Oregon
City of Portland, Oregon
and
Metro

PURPOSE

The purpose of this interagency agreement is to coordinate the orderly provision of future urban services to unincorporated areas between the Cities of Beaverton and Portland through recognition of an urban services boundary by Metro.

RECITALS

WHEREAS: The Cities and Metro are authorized under the provisions of ORS 190.003 to 190.030 to enter into intergovernmental agreements for the performance of any or all functions that a party to the agreement has authority to perform. This Agreement is made pursuant to the authority granted by ORS Chapter 190;

WHEREAS: The Cities have authority to adopt, amend, update and revise coordinated comprehensive plans pursuant to ORS 197.175;

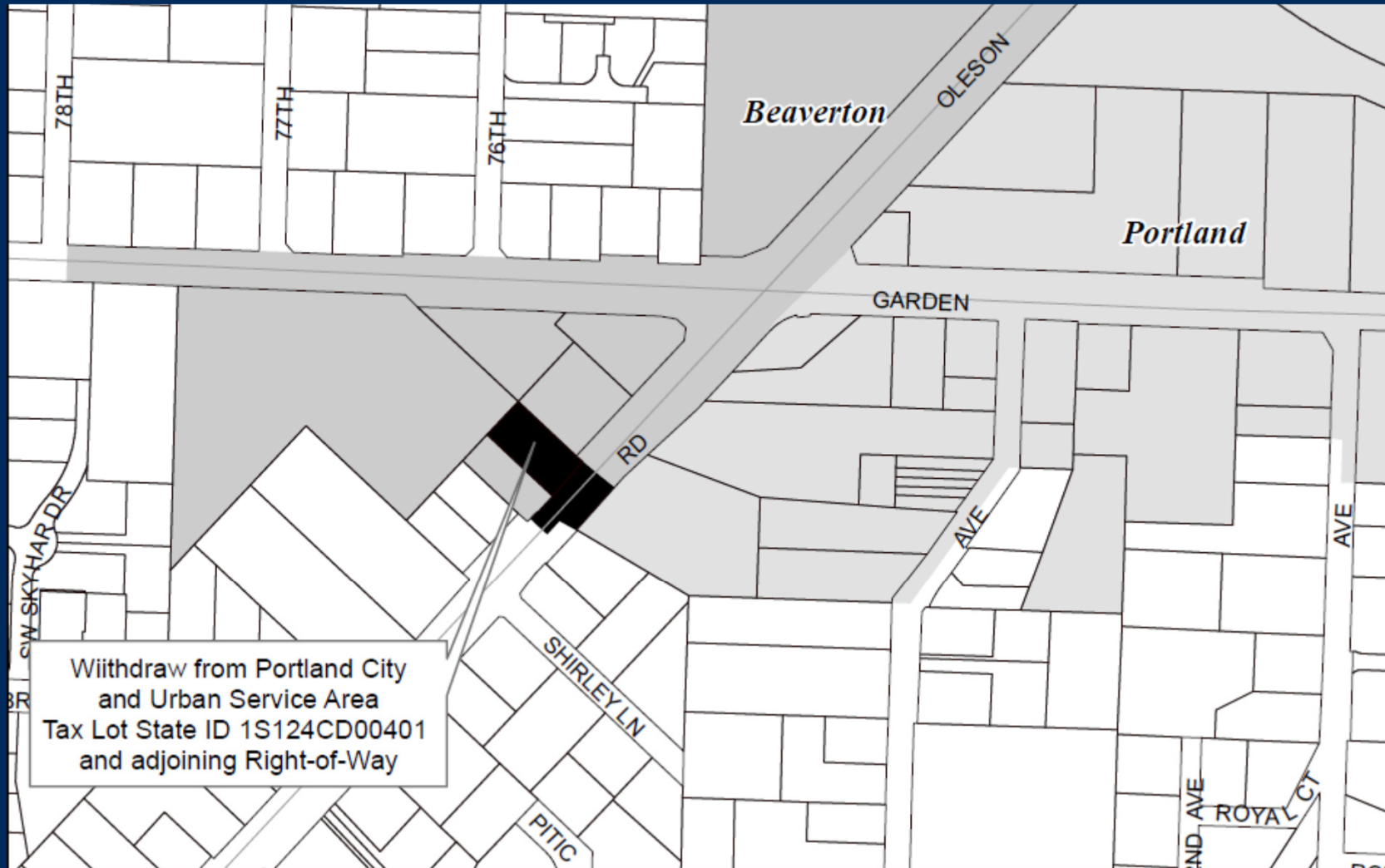
WHEREAS: Metro has authority to coordinate city comprehensive plans pursuant to ORS 268.385 and ORS 195.025;

WHEREAS: Both Cities desire a corrected, updated, and mutually adopted urban service boundary recognized and coordinated by Metro.

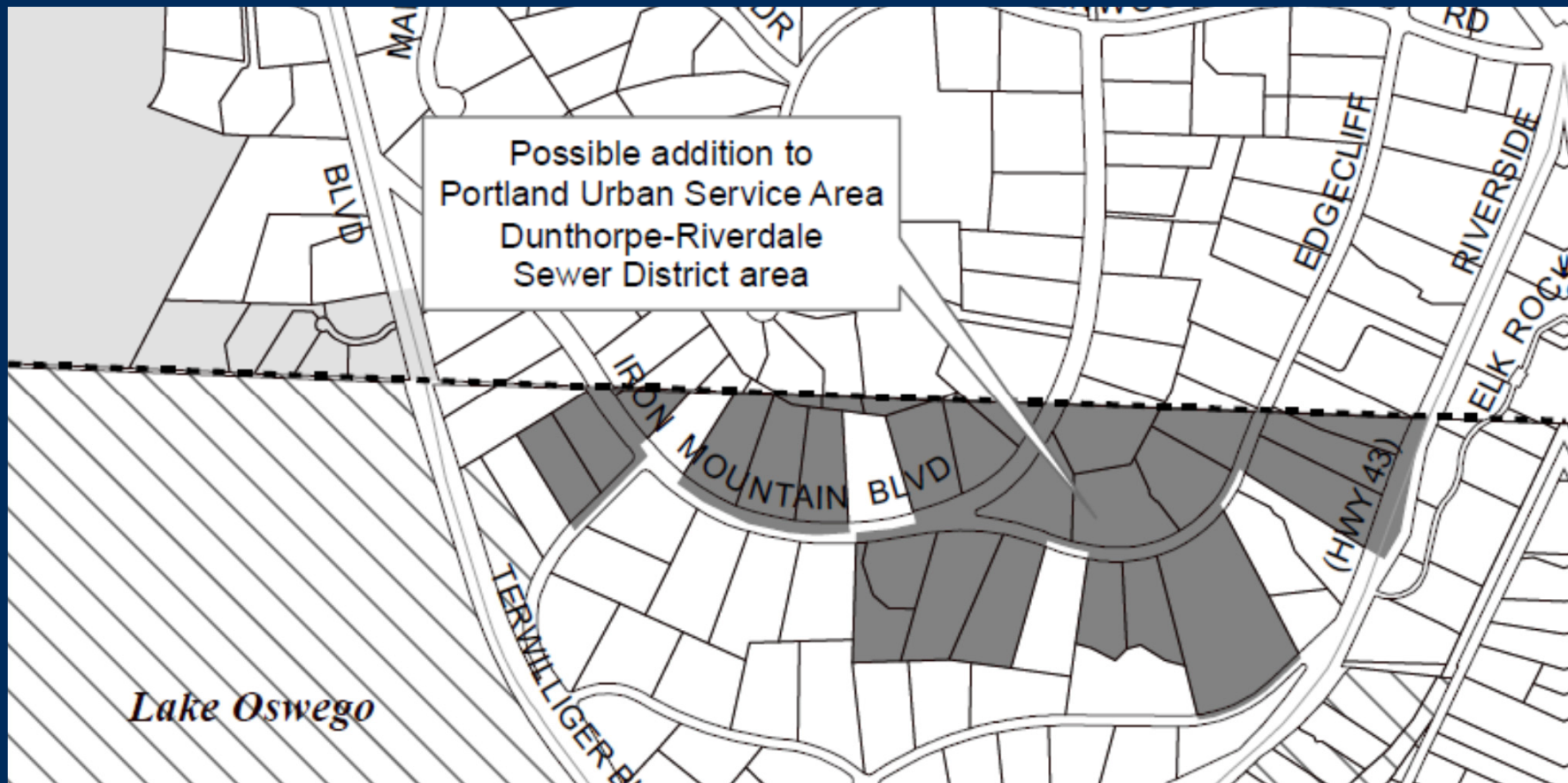
NOW, THEREFORE, THE CITY OF BEAVERTON, OREGON, THE CITY OF PORTLAND, OREGON AND METRO AGREE AS FOLLOWS:



Beaverton Map Example

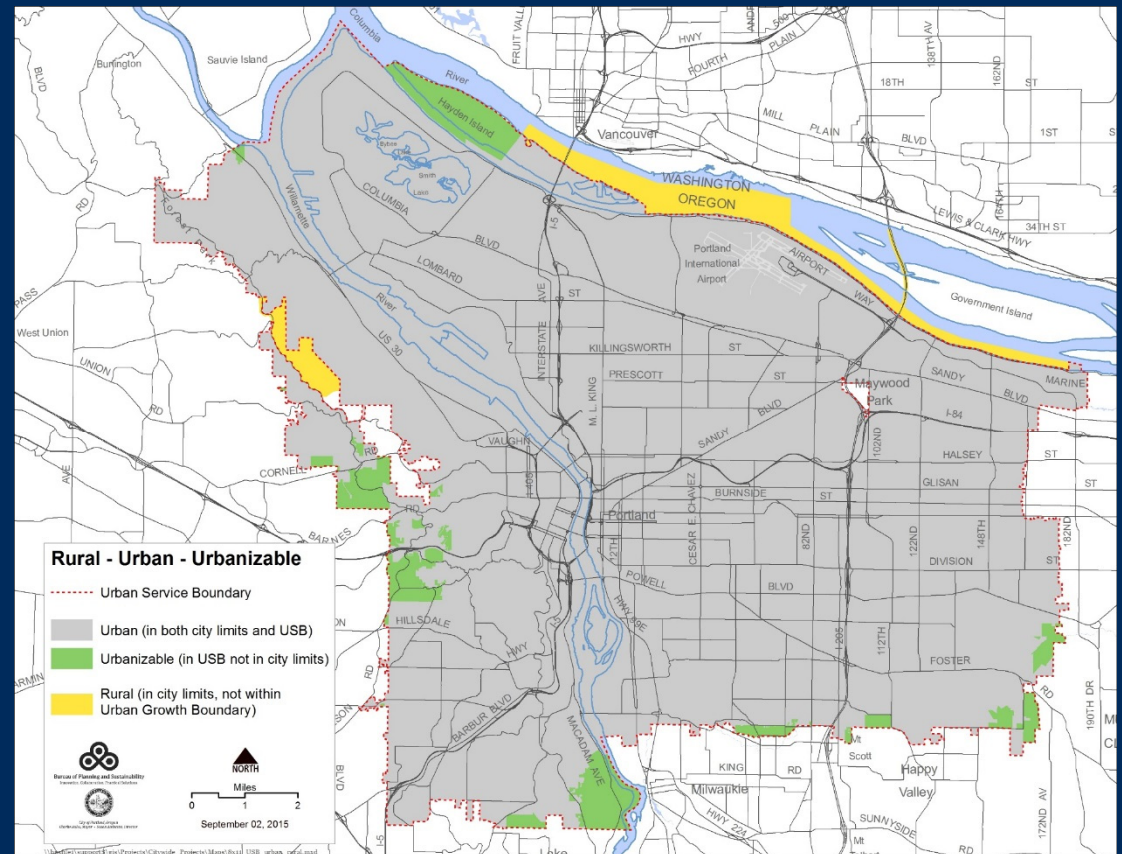


Lake Oswego Map Example



Commission's Views on Approach

1. Adopt new urban services boundary on Plan Map.
2. New boundary to be confirmed as “coordinated” by new three party, City|City|Metro interagency agreements.
3. Amend planning agreements with counties.
4. Establish new interagency agreements with special district urban service providers



End of Presentation

Al Burns, Project Manager

Project Partners

City of Beaverton

City of Gresham

City of Happy Valley

City of Lake Oswego

City of Milwaukie

City of Tigard

Metro

