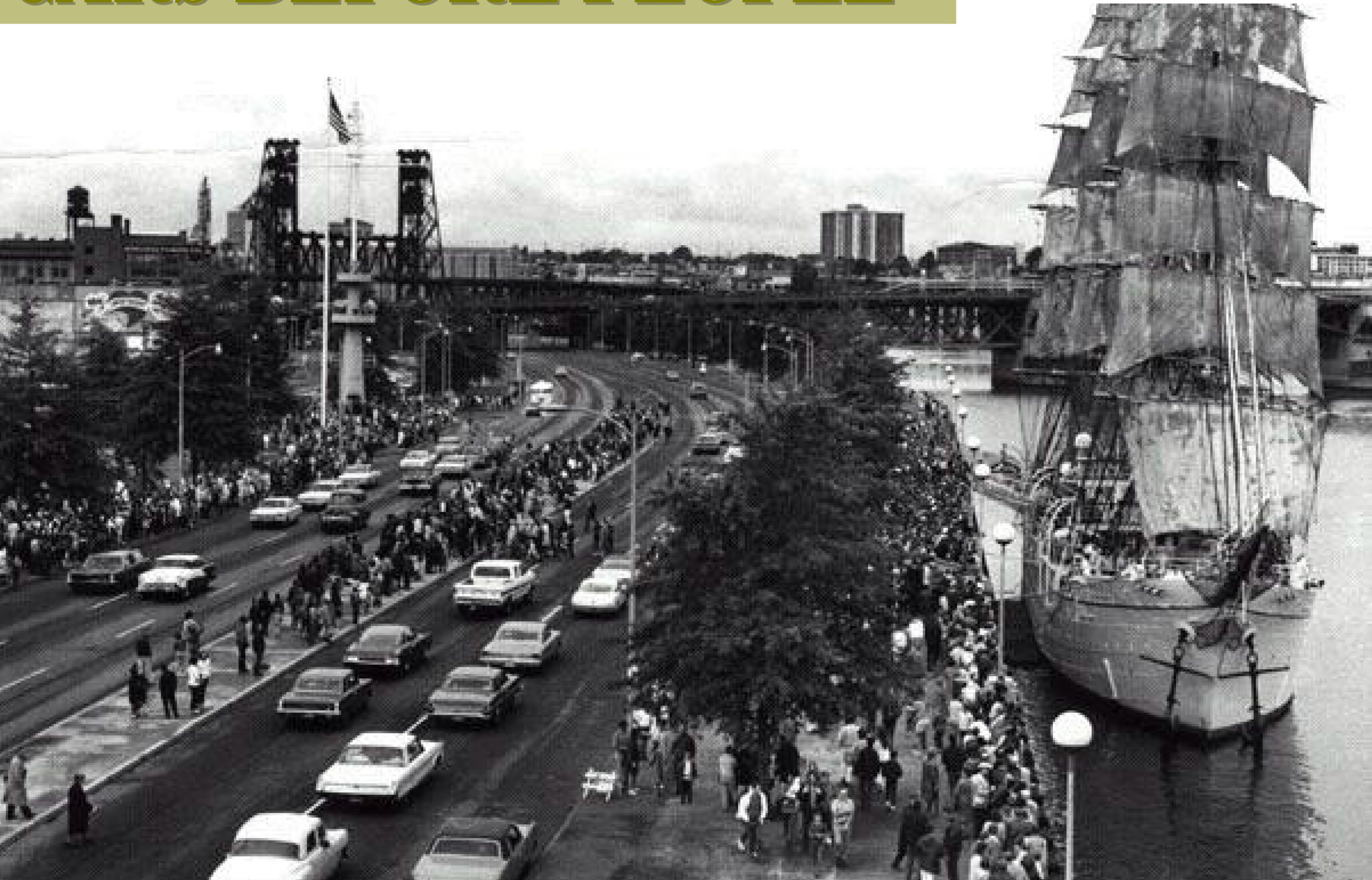


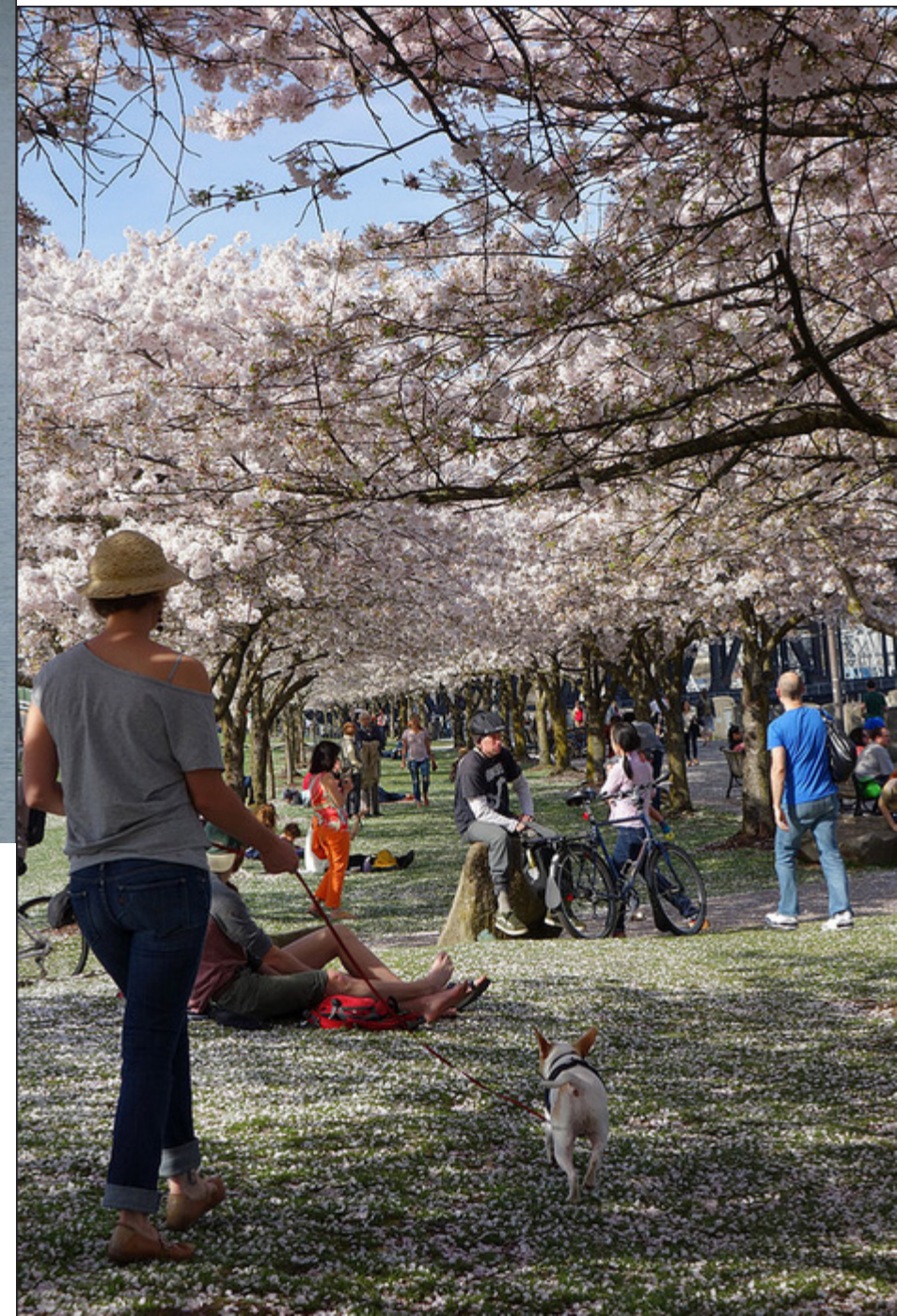
Using what we've got: Building Community in the Street



BEFORE: Harbor Drive Freeway
CARS BEFORE PEOPLE



AFTER: TOM MCCALL WATERFRONT PARK CITIES ARE FOR PEOPLE!

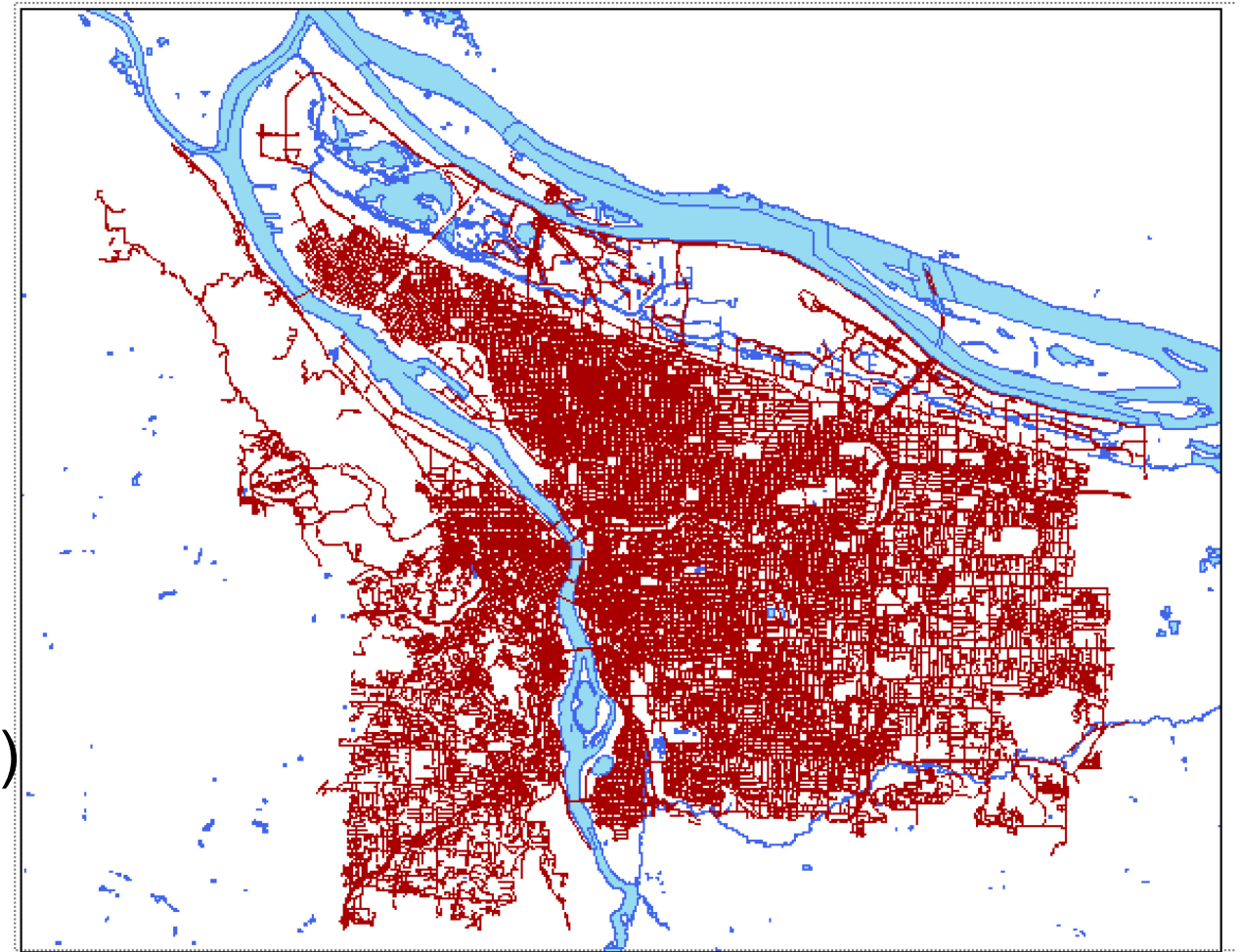


What we have:

It's Big and Expensive!

Portland:

- 4,000 miles of road
- About $\frac{1}{4}$ of land mass = ROW
- 22,000 intersections
- \$8 Billion in transportation assets
 - \$250,000 per residential block
 - \$250,000 per traffic signal
 - \$60,000,000 per mile of freeway (ODOT)
- 26,000,000 miles traveled each day
- 100s of millions of human interactions



Reclaiming Space with Paint



Photo: courtesy Mark Lakeman

Intersection Repair Projects



“Once you start painting, it’s not just the art. It’s equally or more so about bringing out the neighbors and getting to know people. I just met someone I’ve lived near for 20 years.”
– Brad Clark, N Holman & Wilbur

Community Goals

- Build relationships
- Empower people to create public places
- Encourage expression
- Improve quality of life
- Reduce crime



Empowerment Through Community



Crime Prevention (CPTED)



Intersection Repair on Neighborhood Greenways



- 11 of 41 on the system
- Creating community & identity

COMMUNITY BUILDING: in a literal sense



Why Mid-Block Repair?

- Long blocks.
- Near commercial settings.
- Sometimes, it's where neighbors want to paint.



The Basics

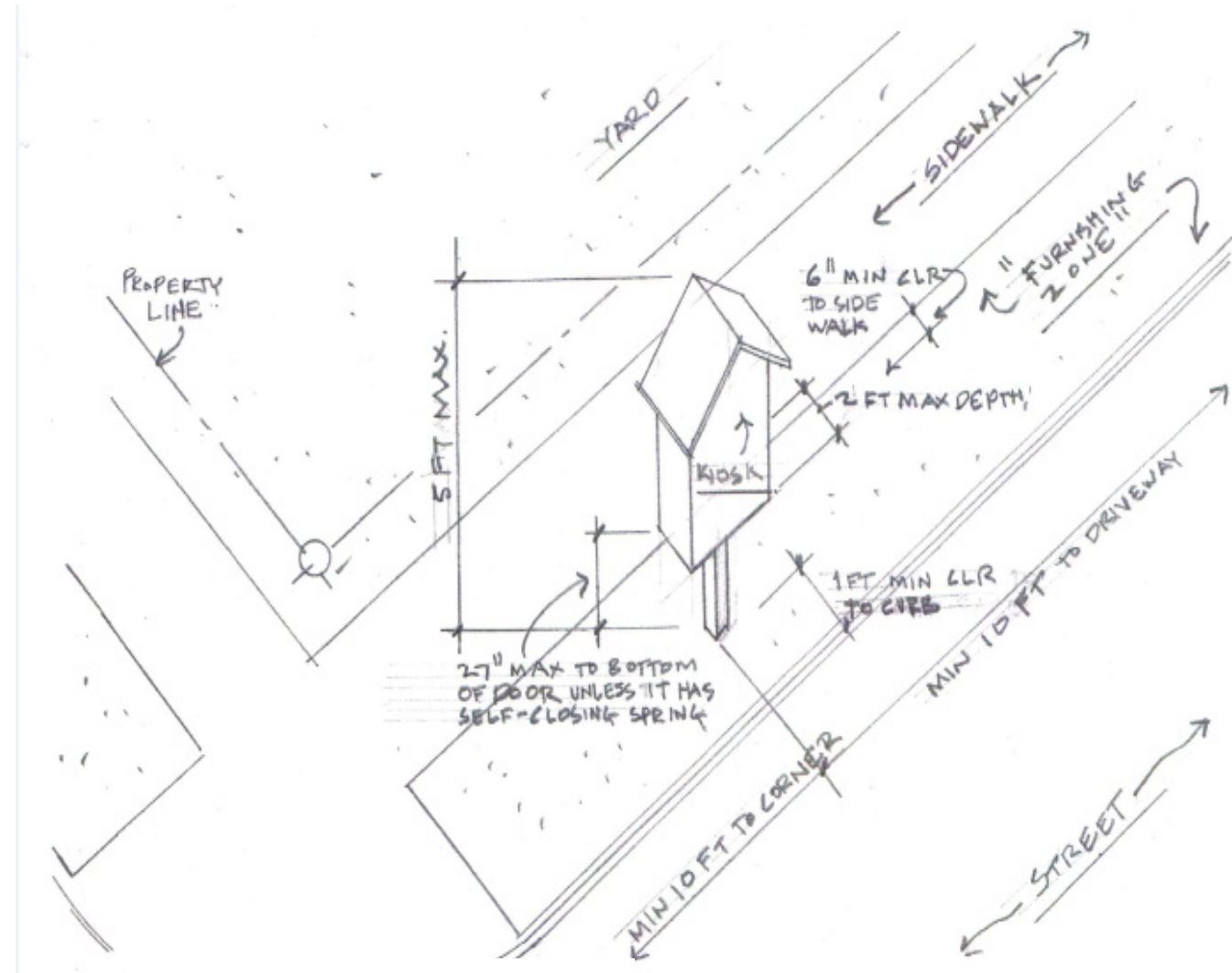
Where can they happen?

- Intersection Repair Projects & Midblock Repair Projects
 - Local service street (residential)
 - No transit bus
 - At intersection: less than 2,500 motor vehicles per day
 - Midblock: less than 2,000 motor vehicles per day
- Approval of City Traffic Engineer (designee)
- Petition: 100% adjacent, plus 2 blocks along the street

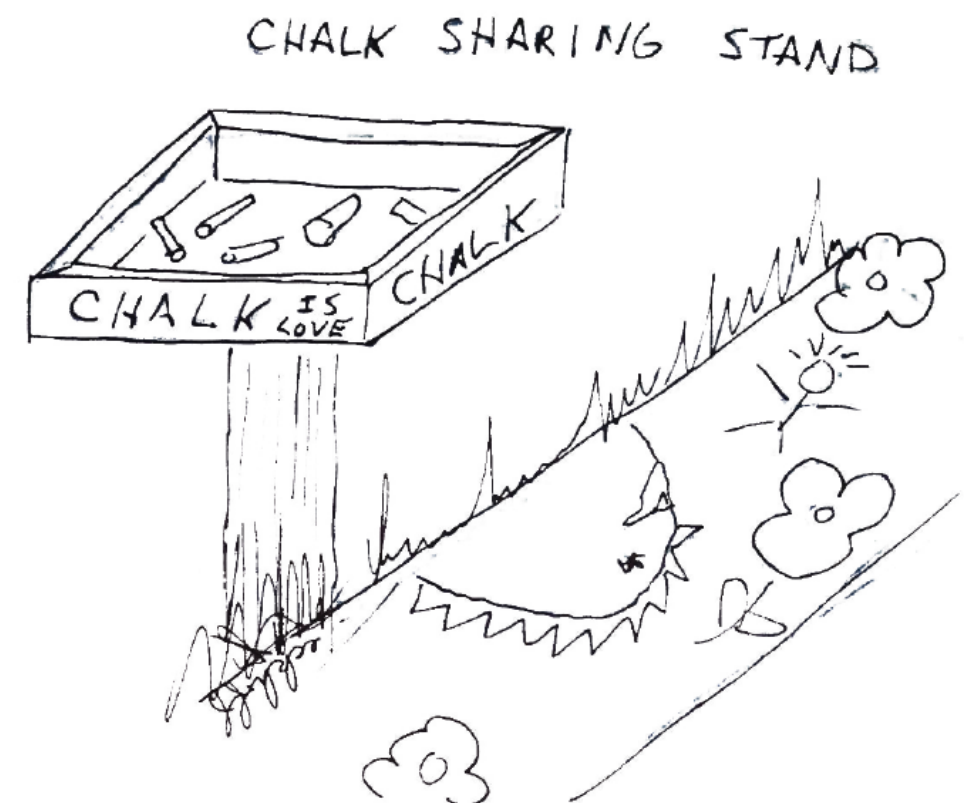


Small Community Kiosks

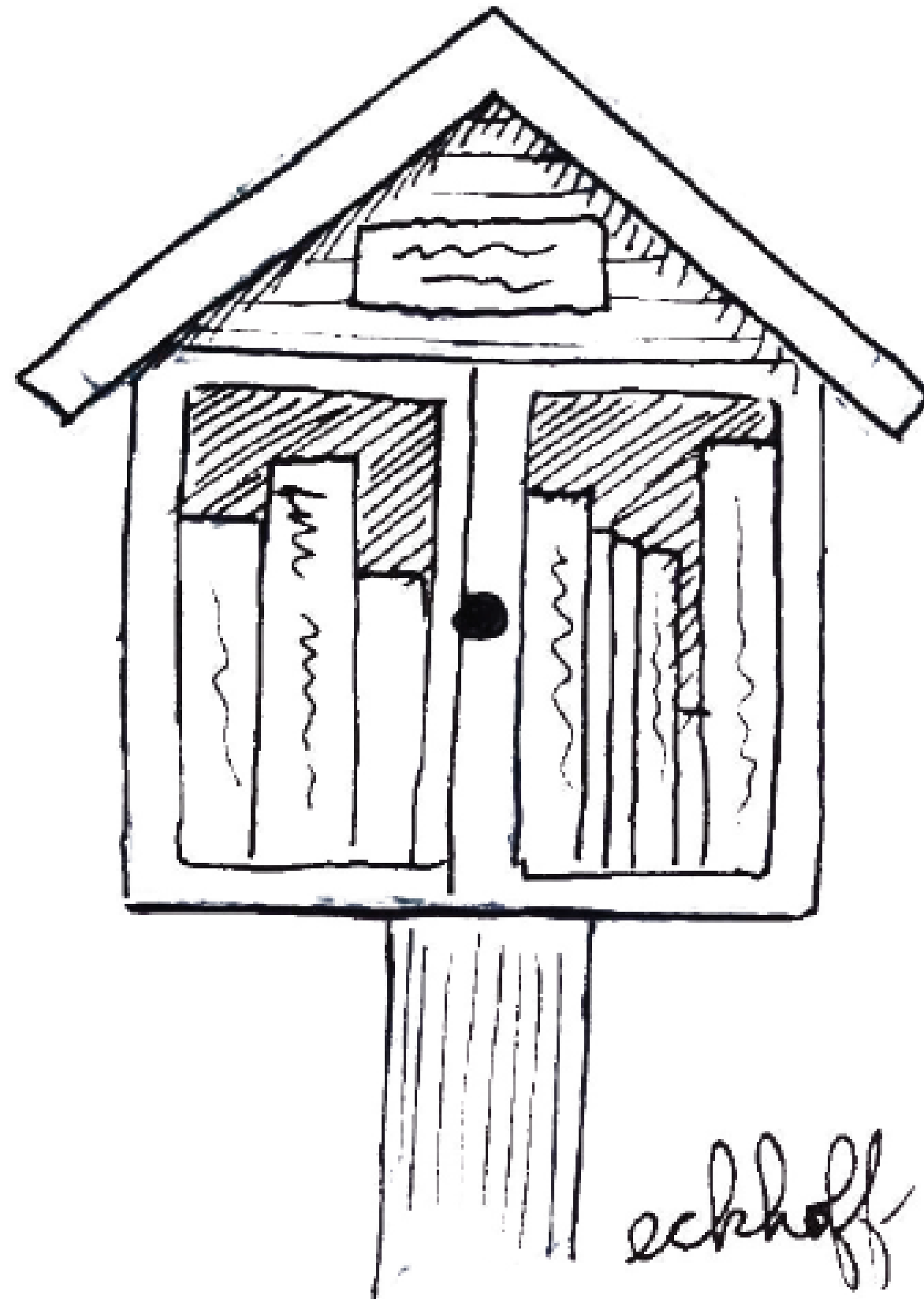
- Small, creative structures that engage community
- Admin rules provide guidance for safe, well-placed objects
- Residential locations
- Property owner consent
- Non-commercial uses
- No electronic communications



A Chalk Revolution



LITTLE FREE LIBRARY

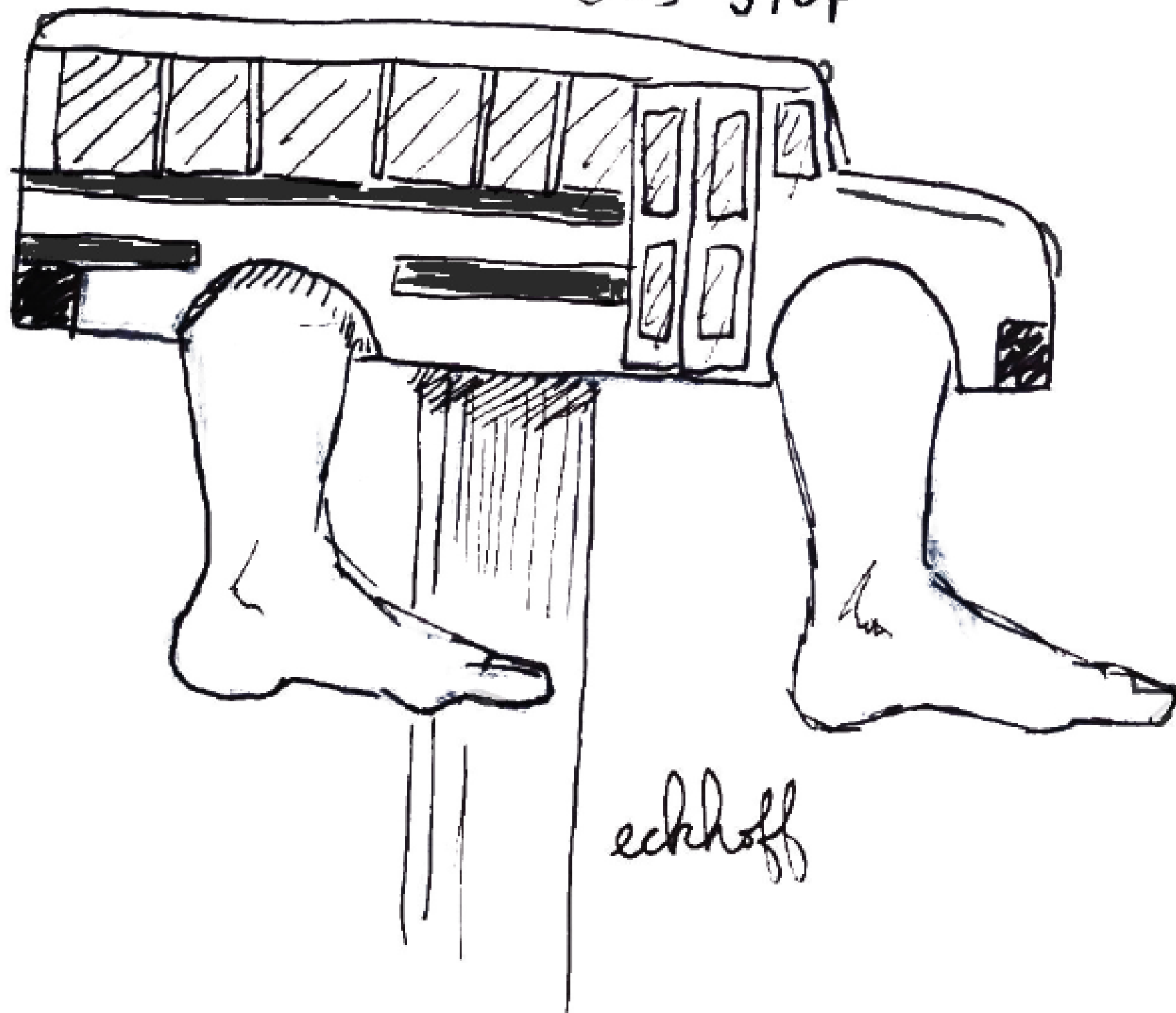


POETRY
KIOSK



echhoff

WALKING SCHOOL BUS STOP



What Will Neighbors Do?

