

# EXHIBIT A

## FIGURE 6 - Chapter 17.102

(Replaced by Ordinance No. XXXXXX  
effective July 1, 2015.)

### Residential Solid Waste and Recycling Rates

As used in Figure 6 the following terms have the meanings described below:

"Excess distance" is applicable to any collection beyond seventy-five (75) feet from the curb. This charge is in addition to the "non-curb surcharge."

"Clean up containers" include hauler-provided containers which are provided as requested by the customer for occasional or temporary use.

"Small multiplex" refers to any multidwelling building or a combination of buildings on a single tax lot in the residential franchise territory that contains 2-4 dwelling units.

"Non-curb surcharge" is the charge for collection service provided at a location more distant than curbside.

"Terrain differential" is applicable to services within the territory designated on Figure 6-1.

<b>Residential Curbside Collection Service Rates and Charges</b>				
<b>Single Family Service Level</b>	<b>Monthly Rate Curbside Pickup</b>	<b>Per Unit or Per Pickup</b>	<b>Non-Curb Surcharge</b>	<b>Excess Distance</b>
<b>Standard Service - Service includes weekly collection of composting &amp; recycling, every-other-week garbage</b>				
20-gallon Can*	24.75		1.70	0.55
32-gallon Can*	28.55		1.70	0.55
20-gallon Rollcart	24.75			
35-gallon Rollcart	29.35			
60-gallon Rollcart	35.65			
90-gallon Rollcart	42.05			
1.0 Cubic Yard Container	85.65			
1.5 Cubic Yard Container	118.25			
2.0 Cubic Yard Container	150.75			
<b>Every-four-weeks Service - Service includes weekly collection of composting &amp; recycling, every-four-weeks garbage</b>				
32-gallon Can*	21.75		0.85	0.30
35-gallon Rollcart	21.75			

\*Customer-provided garbage cans are being phased out and these service levels are generally not available. Customers currently providing their own garbage cans are grandfathered in.

Single Family Service Level	Monthly Rate Curbside Pickup	Per Unit or Per Pickup	Non-Curb Surcharge	Excess Distance
<b>Special Services</b>				
Recycling Only, Weekly Collection	8.55			
Composting & Recycling Only, Weekly Collection	18.20			
On Call Yard Debris Collection (32 gallon Can, Bag, or Bundle--Yard Debris Only)		7.05		
On Call Garbage (32-Gallon Can or Bag)		9.20	0.85	0.30
Yard Debris, Extra Can, Bag or Bundle -- Yard Debris Only		3.75		
Garbage, Extra Can or Bag		5.00	0.85	0.30
Courtesy Callback (Garbage or Composting)		7.95		
Rollcart Delivery**		12.00		
Extra Composting Rollcart	11.40			
Extra Recycling Rollcart	3.55			
<b>Multiple Cans/Rollcarts- Service includes weekly collection of composting &amp; recycling, every-other-week garbage</b>				
32-Gallon Cans, Two*	38.90		3.40	1.10
32-Gallon Cans, Three*	44.95		5.10	1.65
32-Gallon Cans, Four*	49.45		6.80	2.20
20-Gallon Rollcart, Two	30.90			
20-Gallon Rollcart, Three	38.25			
20-Gallon Rollcart, Four	44.05			
35-Gallon Rollcart, Two	38.85			
35-Gallon Rollcart, Three	46.75			
35-Gallon Rollcart, Four	54.65			
60-Gallon Rollcart, Two	47.25			
60-Gallon Rollcart, Three	57.00			
60-Gallon Rollcart, Four	67.25			
90-Gallon Rollcart, Two	55.00			
90-Gallon Rollcart, Three	66.80			
90-Gallon Rollcart, Four	80.15			

\*Customer-provided garbage cans are being phased out and these service levels are generally not available. Customers currently providing their own garbage cans are grandfathered in.

\*\*Rollcart delivery fees may be charged in the following scenarios:

1. For composting and recycling, if it is the customer's second (or greater) rollcart delivery.
2. For garbage, if it is the customer's second (or greater) rollcart delivery within a one year period.
3. Any time the customer requests a clean rollcart.

Service Level	Monthly Rate Curbside Pickup	Per Unit or Per Pickup	Non-Curb Surcharge	Excess Distance
<b>Clean-Up Containers</b>				
One 1.0 Cubic Yard		85.50		
One 1.5 Cubic Yard		93.85		
One 2.0 Cubic Yard		102.10		
<b>Terrain Differential</b>				
Every-Other-Week Garbage (Single Can / Rollcart)	4.20			
Every-Other-Week Garbage (Multiple Cans / Rollcarts)	4.35			
Every-Four-Weeks Garbage	2.60			
Recycling Only	1.60			
Composting & Recycling Only	2.75			
32-Gallon Can Garbage On-Call	0.75			
On Call Yard Debris Collection (32 gallon Can, Bag, or Bundle -- Yard Debris Only)	0.50			

## Curbside Collection Service Rates and Charges for Small Multiplexes

Weekly Composting & Recycling, Every-Other-Week Garbage			
Collection for:	Duplex	Tri-Plex	Four-Plex
<b>Single Container Service, where rollcart / container is shared by residents of 2, 3 or 4 units</b>			
One shared 60-Gallon Rollcart	39.40	46.55	N / A
One shared 90-Gallon Rollcart	43.10	50.25	57.40
One shared 1.0 Cubic Yard Container	66.80	73.95	81.10
One shared 1.5 Cubic Yard Container	83.90	91.05	98.20
One shared 2.0 Cubic Yard Container	100.85	108.00	115.15
<b>Multiple Containers, where all cans / rollcarts are placed together in a single location at curbside for pickup. Where unshared cans / rollcarts are located separately at curbside for pickup then each is considered a separate account, charged at single-family rate.</b>			
Two 32-Gallon Cans*	39.65	46.80	N / A
Three 32-Gallon Cans*	43.60	50.75	57.90
Four 32-Gallon Cans*	47.60	54.75	61.90
Two 20-Gallon Rollcarts	38.05	N / A	N / A
Three 20-Gallon Rollcarts	41.20	48.35	N / A
Four 20-Gallon Rollcarts	44.35	51.50	58.65
Two 35-Gallon Rollcarts	41.25	48.40	55.55
Three 35-Gallon Rollcarts	46.00	53.15	60.30
Four 35-Gallon Rollcarts	50.80	57.95	65.10
Two 60-Gallon Rollcarts	47.10	54.25	61.40
Three 60-Gallon Rollcarts	54.75	61.90	69.05
Four 60-Gallon Rollcarts	62.45	69.60	76.75
Two 90-Gallon Rollcarts	54.40	61.55	68.70
Three 90-Gallon Rollcarts	65.75	72.90	80.05
Four 90 Gallon Rollcarts	77.10	84.25	91.40

--N/A services are not available.

--Non-curbside service is available at small multiplexes for garbage cans and rollcarts at an additional monthly charge of \$1.70 per can and \$3.50 per rollcart. Excess distance charge for a can is \$0.55. Excess distance charge for a rollcart is \$1.15.

--For composting services, extra cans, bags, or bundles of yard debris only are \$3.75 each and accrue on a per account, rather than per unit, basis.

--Recycling labor surcharge is \$7.15 per additional dwelling unit.

\*Customer-provided garbage cans are being phased out and these service levels are generally not available. Customers currently providing their own garbage cans are grandfathered in.

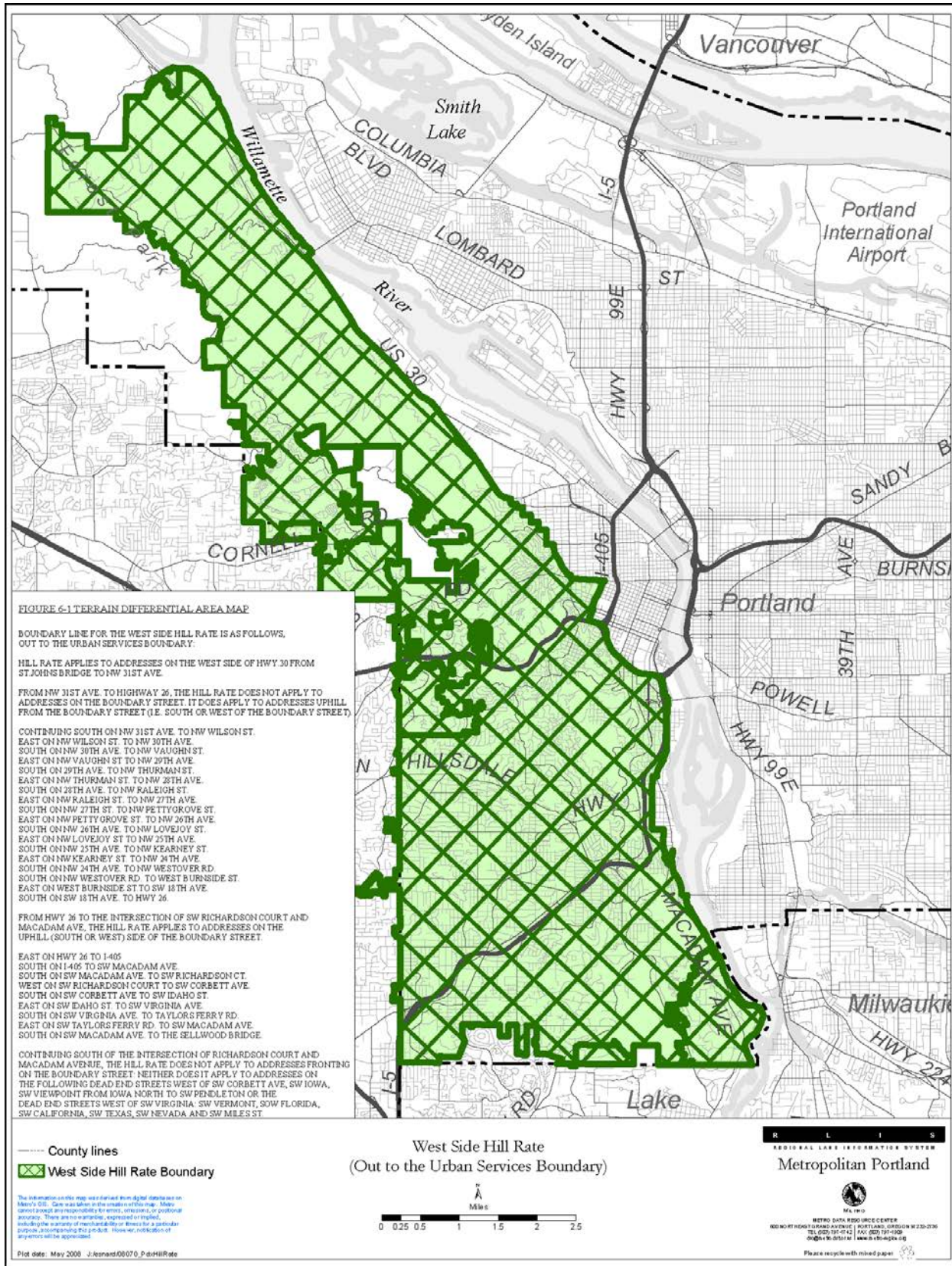


Figure 6 – Page 5