

working for clean rivers



Council Item #245 **SE Hawthorne-Salmon Sewer** **Reconstruction and Green Streets Project**

Scott T. Gibson, P.E., Principal Engineer
Bill Owen, P.E., Senior Engineer
Bureau of Environmental Services

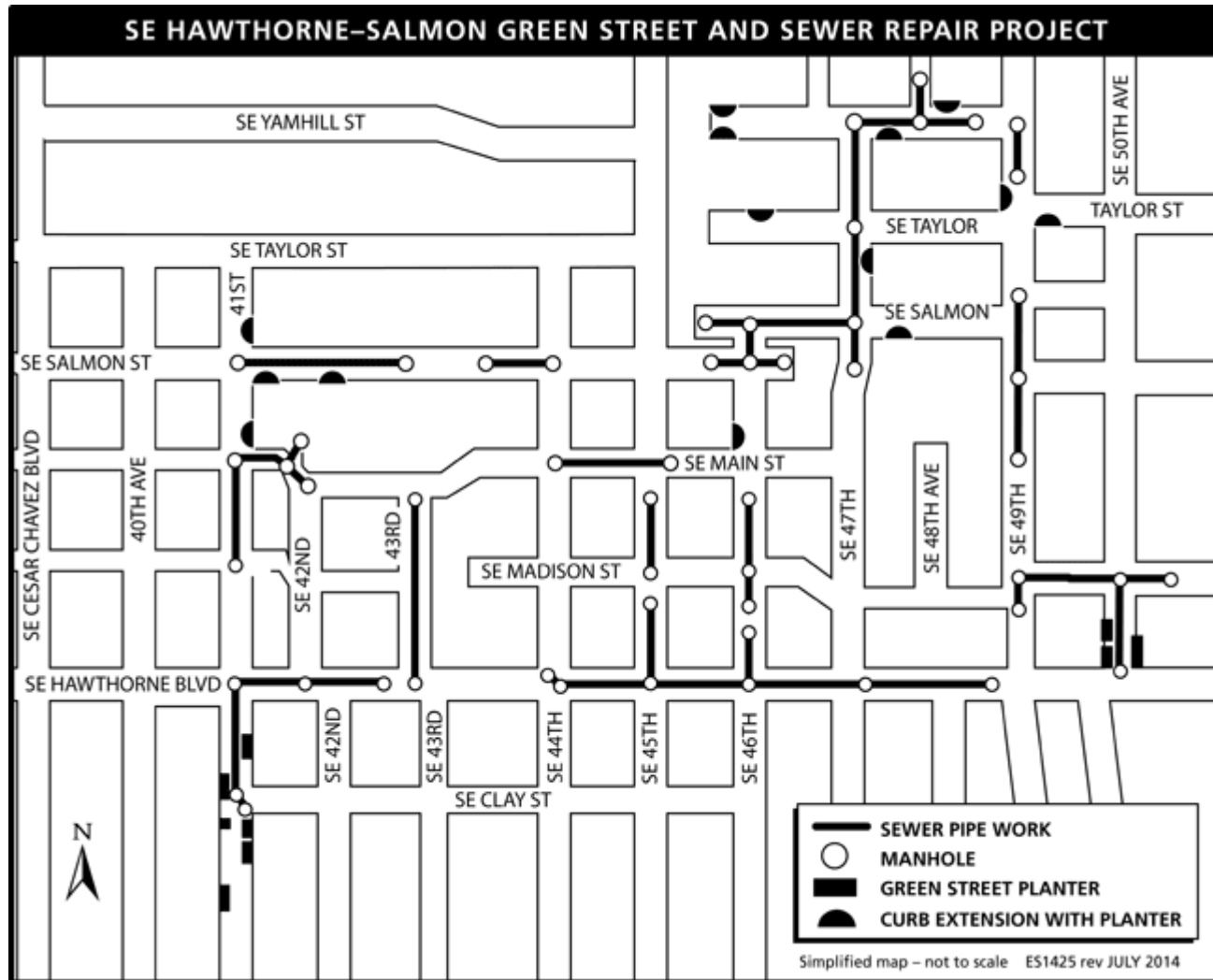
March 4, 2015



ENVIRONMENTAL SERVICES
CITY OF PORTLAND

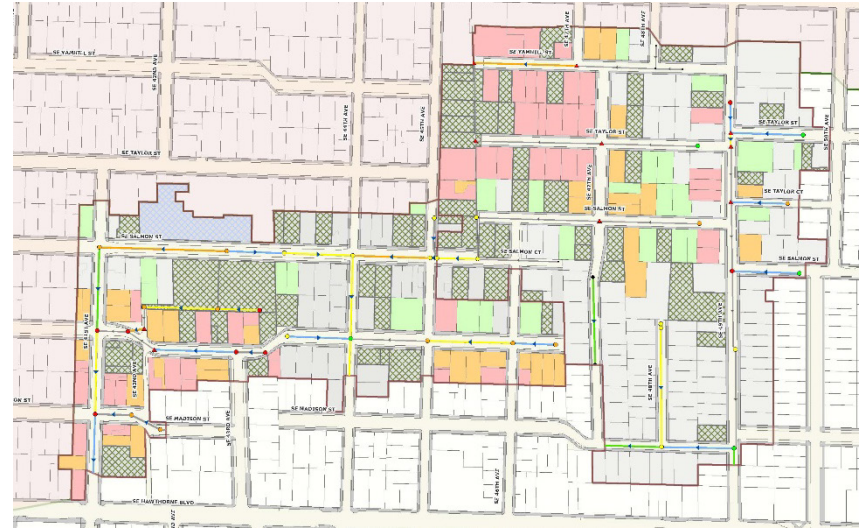
NICK FISH, COMMISSIONER
JAMES HAGERMAN, INTERIM DIRECTOR

Project Location



Background

- In 2007 BES' *Integrated Taggart D Pre-design Report* indicated this area was not meeting sewer capacity level-of service:
 - Elevated risk of sewer backups for 111 parcels
 - Elevated risk of street flooding for 21 manholes
- Project included as part of the Tabor to the River Program



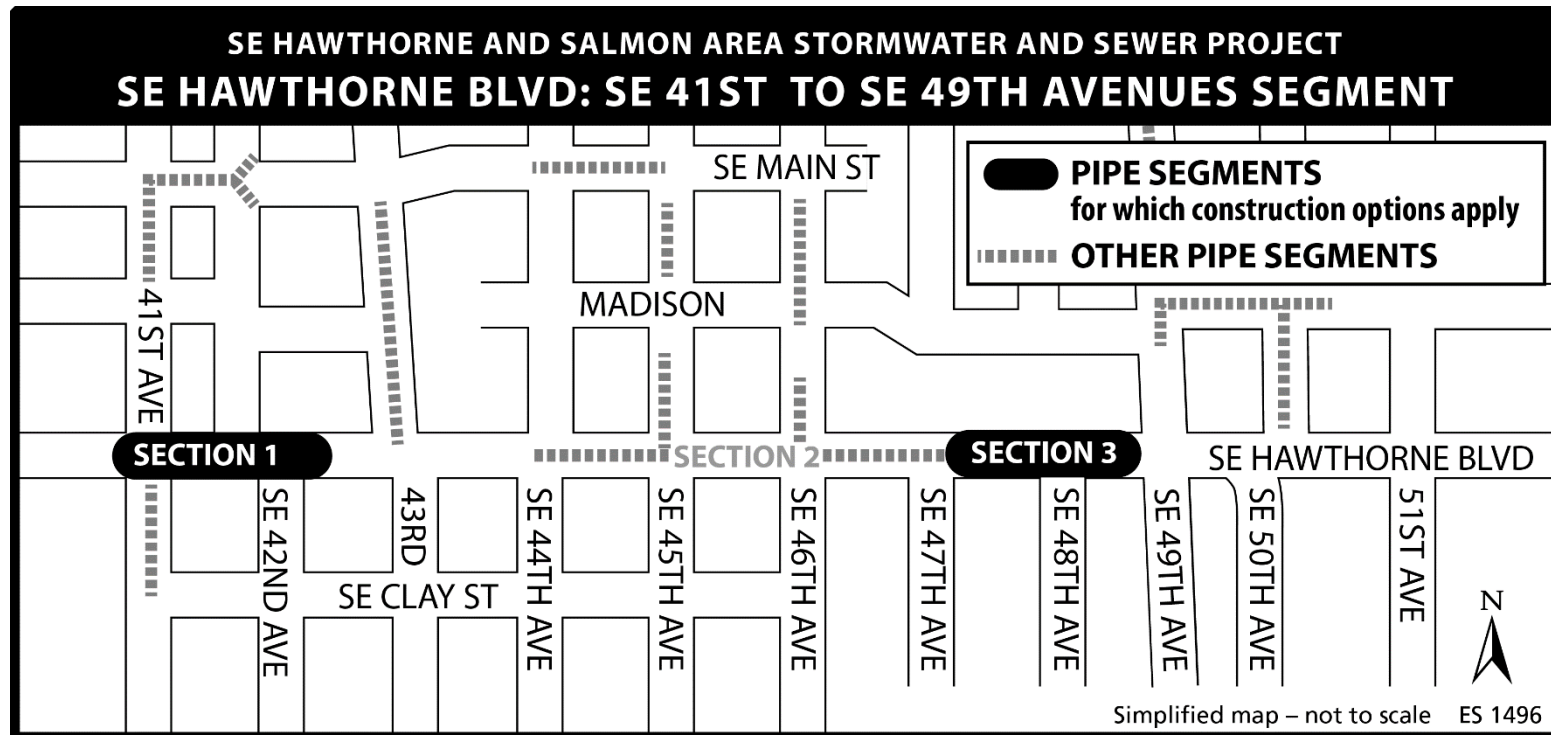
Project Goals and Objectives

- Relieve sewer backup and structurally deficient pipes within the project limits. This project will reduce risk of basement sewer backups during the 25-year design storm. In addition, the project will replace selected pipe segments that are at the end of their service life and could fail in the near future (condition grades 4 & 5).
- Surface infiltration facilities will be used where effective and efficient to reduce stormwater volumes and minimize the need to construct larger sewer pipe (cost effectiveness of this approach depends upon pipes being in good condition).

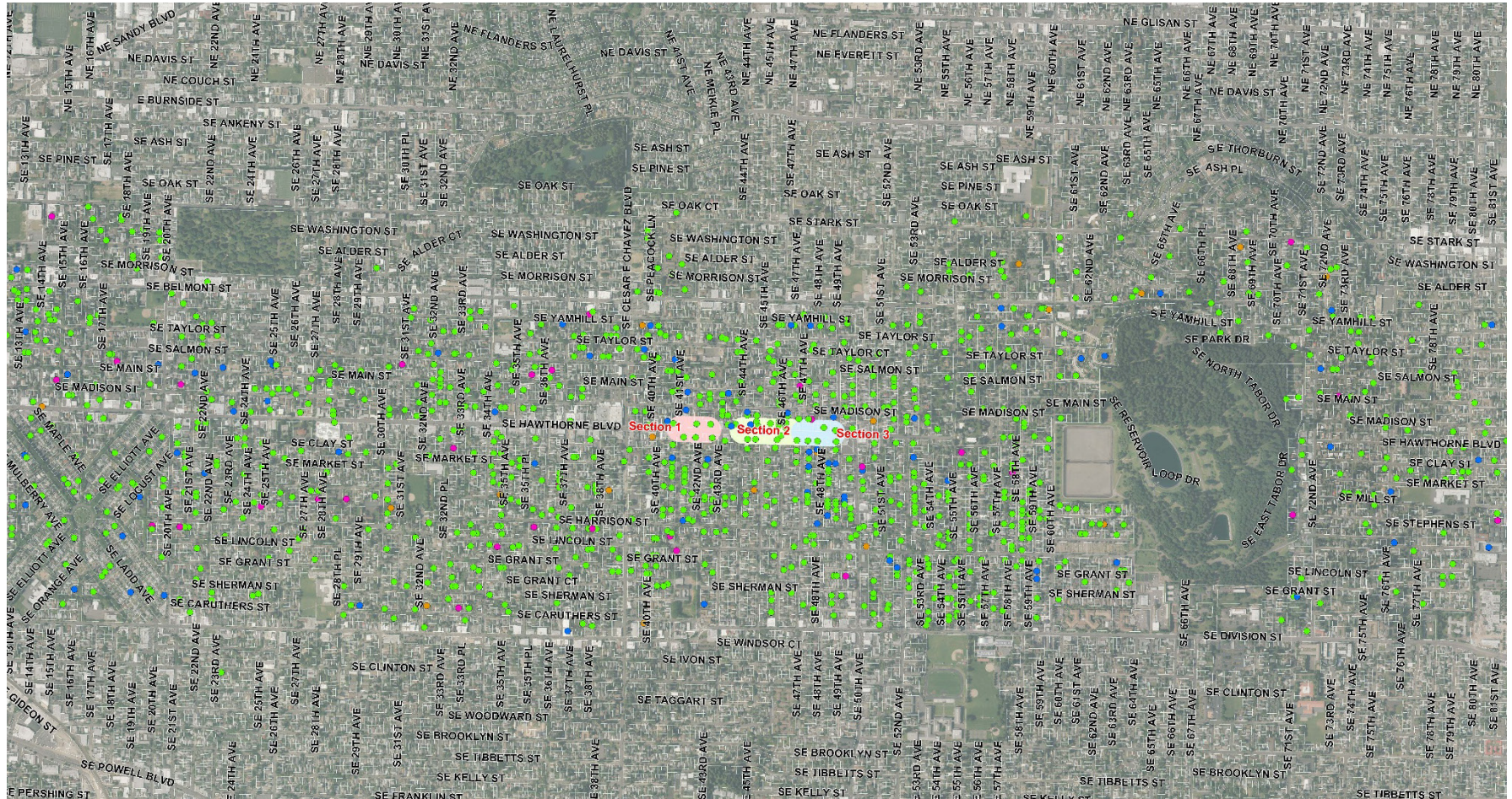


SE Hawthorne – Sewer Improvements

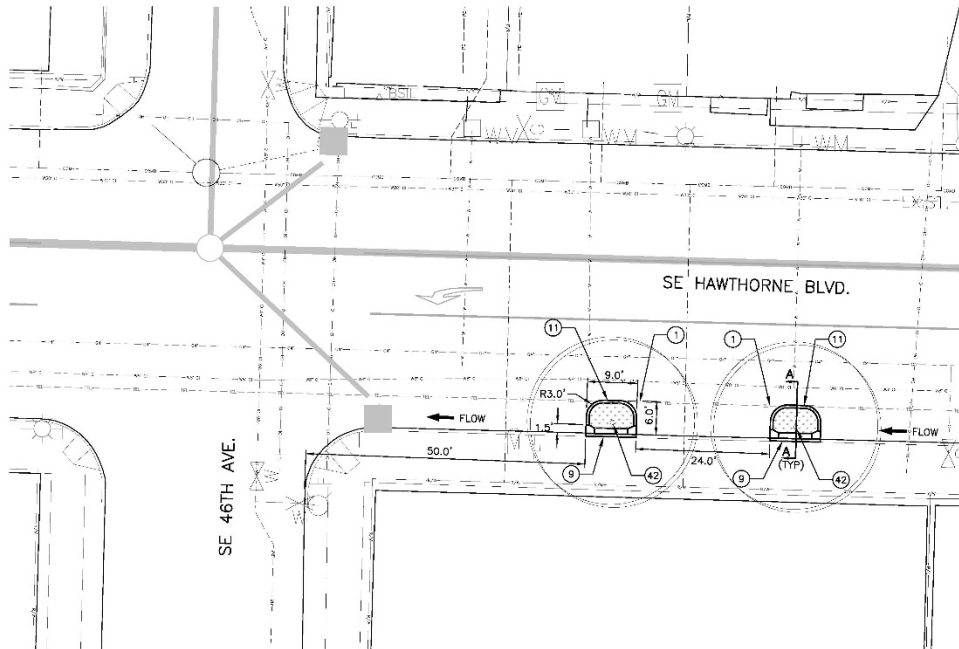
- Sewer improvements required between SE 41st - SE 49th Aves



SE Hawthorne – Sewer Improvements



SE Hawthorne – Tree Mitigation

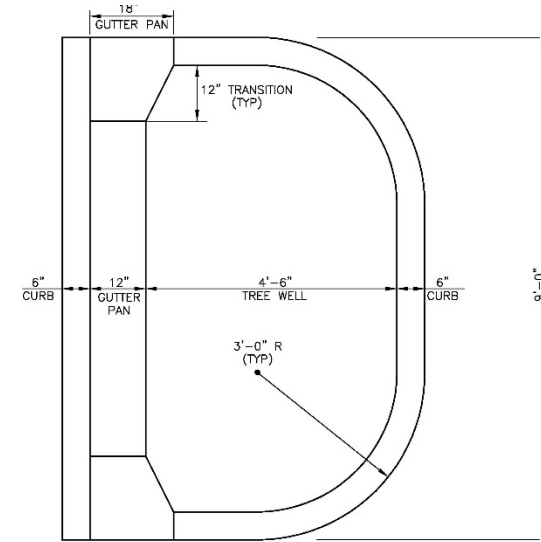


CONSTRUCTION NOTES:

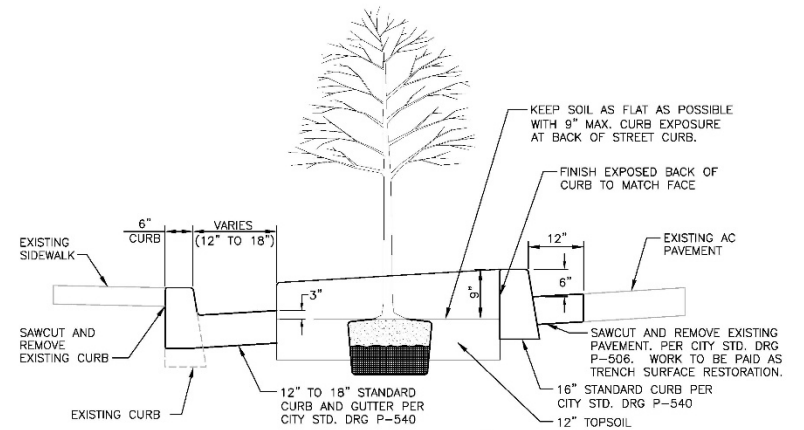
- ① POT HOLE TO LOCATE EXISTING UTILITY PRIOR TO CONSTRUCTION.
- ② INSTALL 12" TO 18" STANDARD CURB AND GUTTER PER STD. DWG. P-540.
- ③ INSTALL STANDARD CURB PER STD. DWG. P-540.
- ④ NEW STREET TREE, INSTALLED BY OTHERS.

SHEET NOTES:

SEE SHEET C17 FOR SEWER INFORMATION.



PLAN



SECTION A-A

Harper Houf Peterson Righellis Inc.
ENGINEERS • PLANNERS • LANDSCAPE ARCHITECTS • SURVEYORS



Next Steps

- Advertise late March 2015
- Level of Confidence is Optimal
- Purchasing Agent to report back to Council with lowest responsible bid
- Construction NTP July 2015
- Construction duration is 12 months

