



Portland E-Zone Program Update and New Policy

February 25, 2015

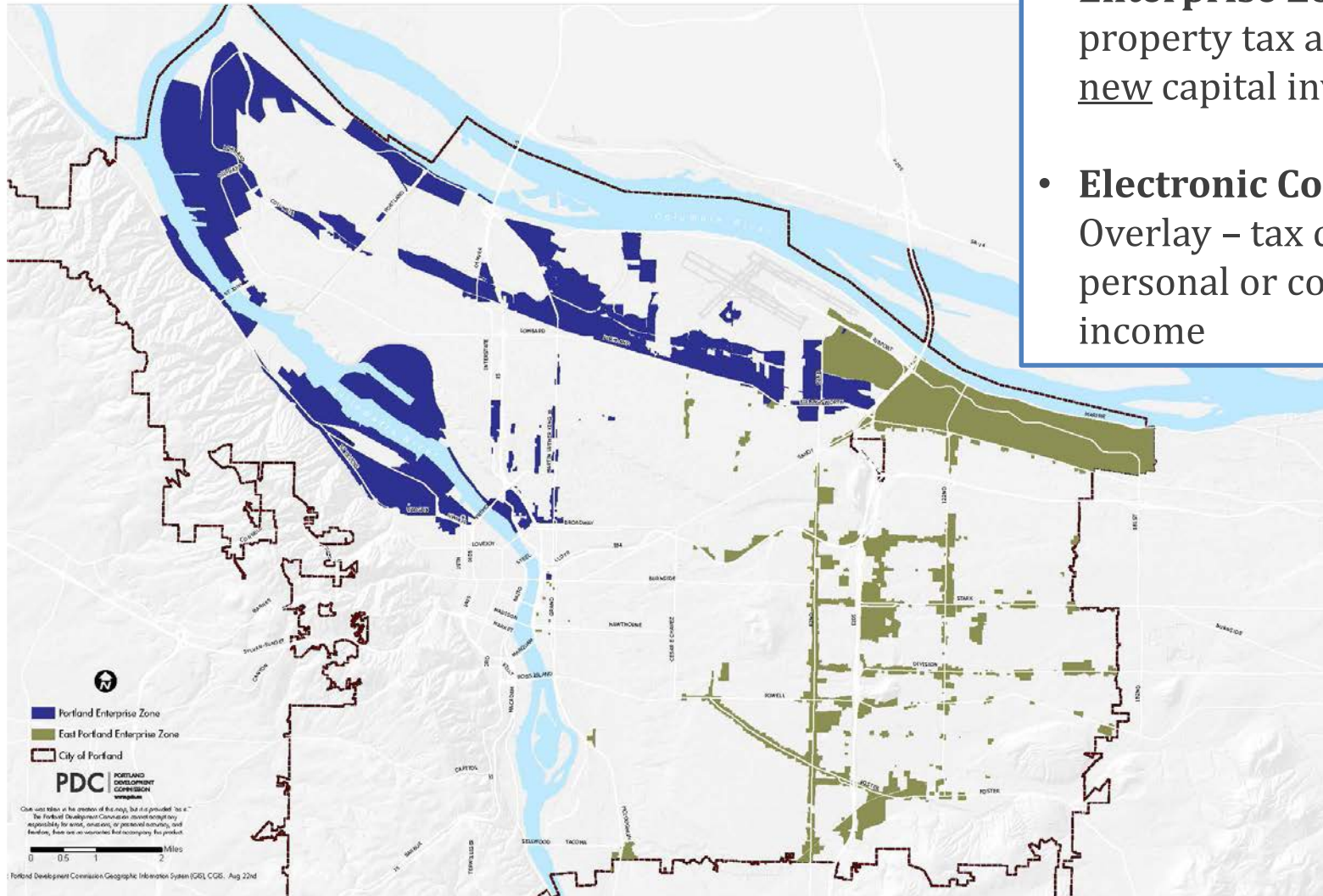


Council Action

Adopt a new
Portland Enterprise-Zone & E-
Commerce Policy

Portland Enterprise Zones

- **Enterprise Zone** - 5-year property tax abatement on new capital investments
- **Electronic Commerce Overlay** – tax credit on personal or corporate income

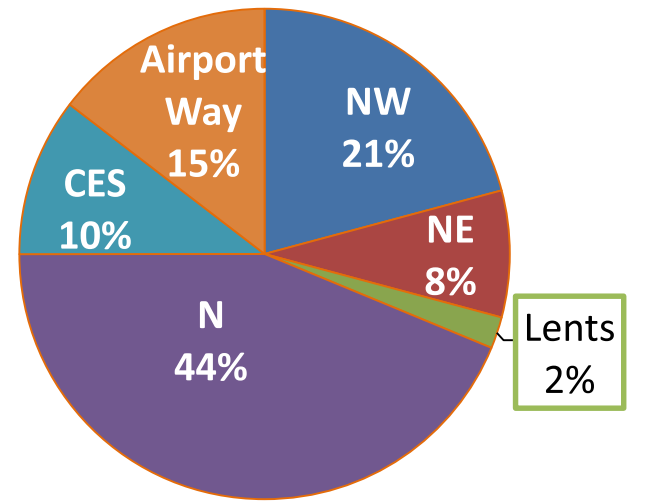


Program Requirements and Participating Firms

Program Requirements:

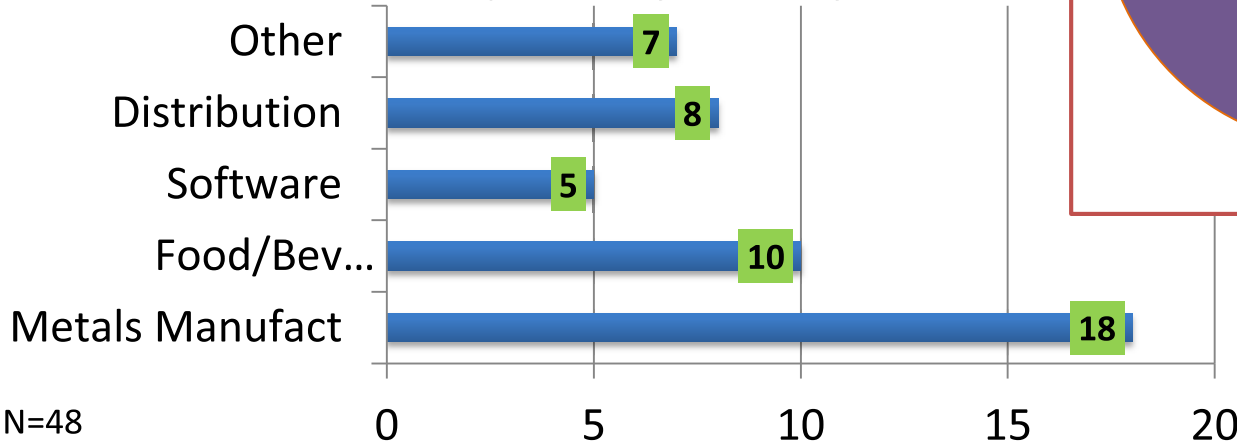
- 10% FTE Increase
- Pay 150% Min Wage (\$13.50+)
- Employee Benefits
- Employment Retention
- First Source Hiring Agreement
- Local Procurement Plan

Companies by Location



N=48

Companies by Industry



N=48

Program Impacts



**Average Wages +
Benefits: \$34.00**

**2013 Local
Procurement:
\$57.7M**

**New E-Zone Jobs
since 2009: 1,418**

**Total Investment
since 2009: \$705M**



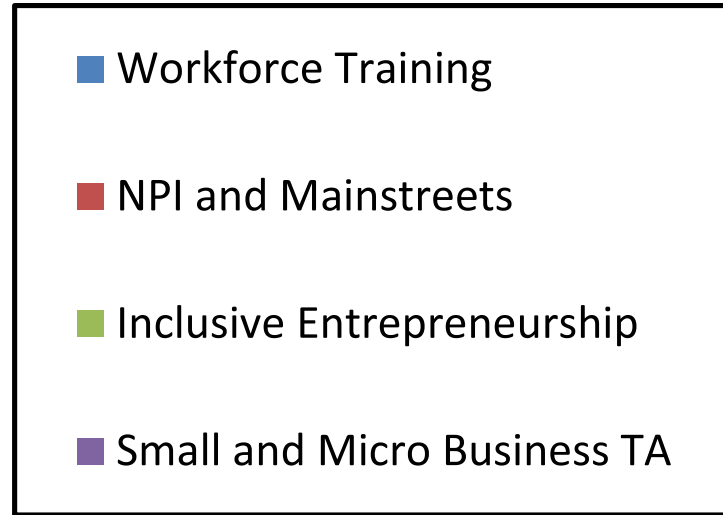
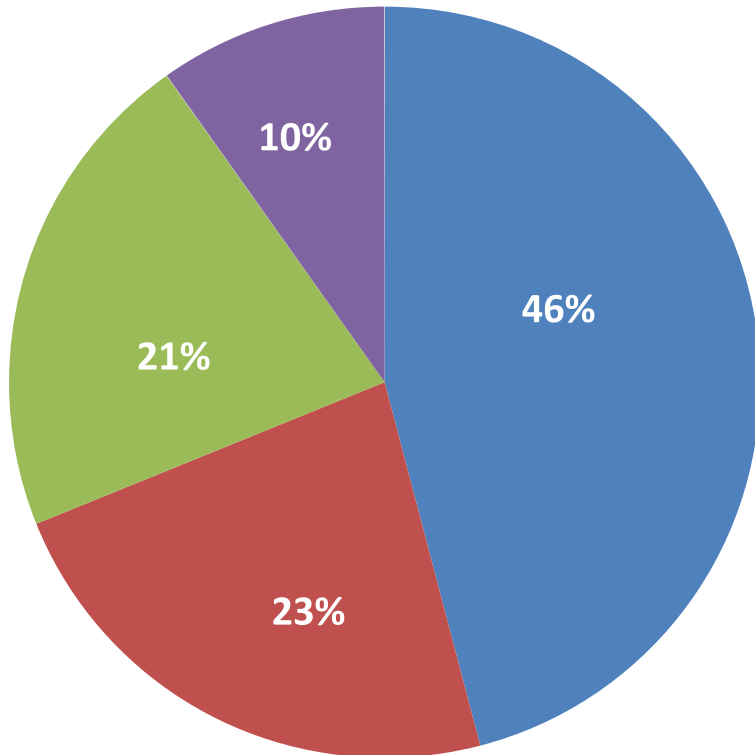
Proposed Policy Changes

- ❑ Align program with PDC Strategic Plan; reinforce community benefits
 - Establish NED Leadership Group as advisory body
 - Strengthen Transit & Child Care Support
 - Link E-Zone Policy to PDC Equity Policy
 - Add E-Commerce payments to Community Contributions Fund

- ❑ Combine two polices; clean up technical elements

Strategic Investments

2014 – 2018 Community Contributions Fund Forecast Expenditures



Total Funding: \$3M

Questions & Comments

2011-2014

E-Zone Company List/Investments

Calbag Metals	2011	\$ 4,000,000
MEMC	2011	\$ 37,198,000
Rentrak	2011	\$ 4,910,000
Service Steel	2011	\$ 2,314,245
SoloPower	2011	\$ 79,000,000
Subaru	2011	\$ 20,000,000
Archer Daniels Midland	2012	\$ 37,000,000
Cascade Energy	2012	\$ 20,000,000
Dealer's Supply	2012	\$ 7,000,000
Profile-Laser LLC	2012	\$ 400,000
Vigor Industrial	2012	\$ 45,000,000
Ajinomoto Frozen	2013	\$ 9,500,000
Bob's Metals, Inc.	2013	\$ 3,600,000
Bridge City Steel	2013	\$ 2,023,000
Bridgetown Natural Foods	2013	\$ 6,500,000
Canpotex	2013	\$ 150,000,000
Viewpoint	2013	\$ 25,000,000
Viewpoint II	2013	\$ 20,000,000
Dannon/YoCream	2013	\$ 6,000,000
DTNA	2013	\$ 150,000,000
Evraz	2013	\$ 4,000,000
FedEx	2013	\$ 30,000,000

Isite	2013	\$ 1,000,000
King Cycle	2013	\$ 1,700,000
Leatherman	2013	\$ 22,000,000
McKenna Steel	2013	\$ 160,000
Moda/Ardon Health	2013	\$ 2,500,000
New Seasons	2013	\$ 8,700,000
Olympic Provisions	2013	\$ 2,500,000
Oregon Oils, LLC	2013	\$ 600,000
Portland Guild LLC	2013	\$ 450,000
TEC Equipment-HQ	2013	\$ 850,000
TEC Trailer Center	2013	\$ 2,800,000
SunEdison	2013	\$ 32,000,000
Triad Machinery	2013	\$ 5,800,000
UPS Driver Training Center	2014	\$ 1,100,000
Radical Parts LLC	2014	\$ 400,000
Yoshida	2014	\$ 1,500,000
	Totals	\$ 748,000,000