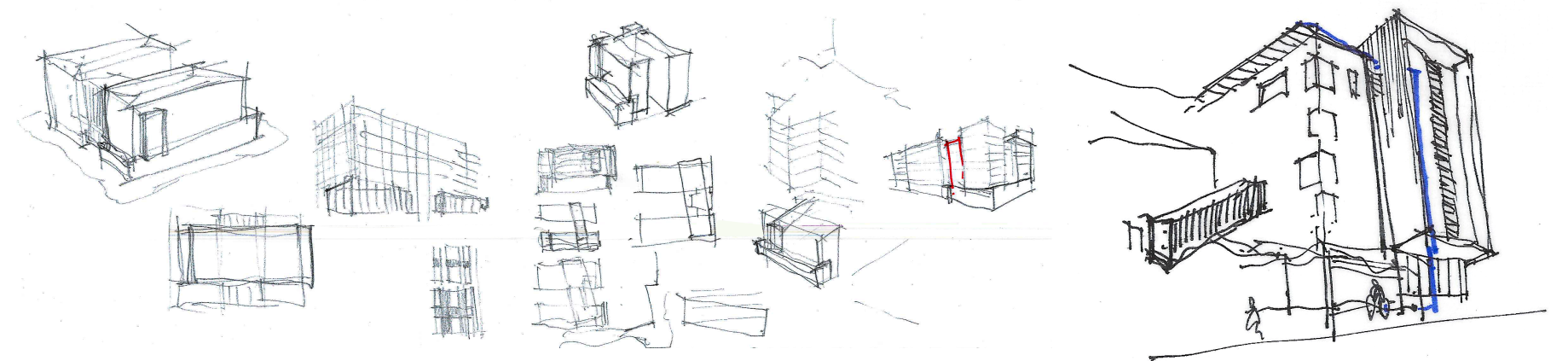




TABLE OF CONTENTS

NE VIEW	C1
TABLE OF CONTENTS	C2
AERIAL VIEW FROM SE	C3
AERIAL VIEW FROM SE	C4
NE VIEW	C5
SE VIEW	C6
SW VIEW	C7
VICINITY MAP	C8
BLOCK STUDY	C9
SITE AND CONTEXT PHOTOS	C10
PRECEDENTS	C11
MASSING DIAGRAM	C12
LANDSCAPE SITE PLAN	C13
COURTYARD DIAGRAM	C14
LANDSCAPE COURTYARD PLAN	C15
LANDSCAPE ROOF TERRACE	C16
PARKING LEVEL	C17
GROUND FLOOR PLAN	C18
LEVELS 2-5	C19
LEVEL 6	C20
ROOF PLAN	C21
SOUTH ELEVATION	C22
EAST ELEVATION	C23
NORTH ELEVATION	C24
WEST ELEVATION	C25
BUILDING SECTION	C26
MATERIALS	C27



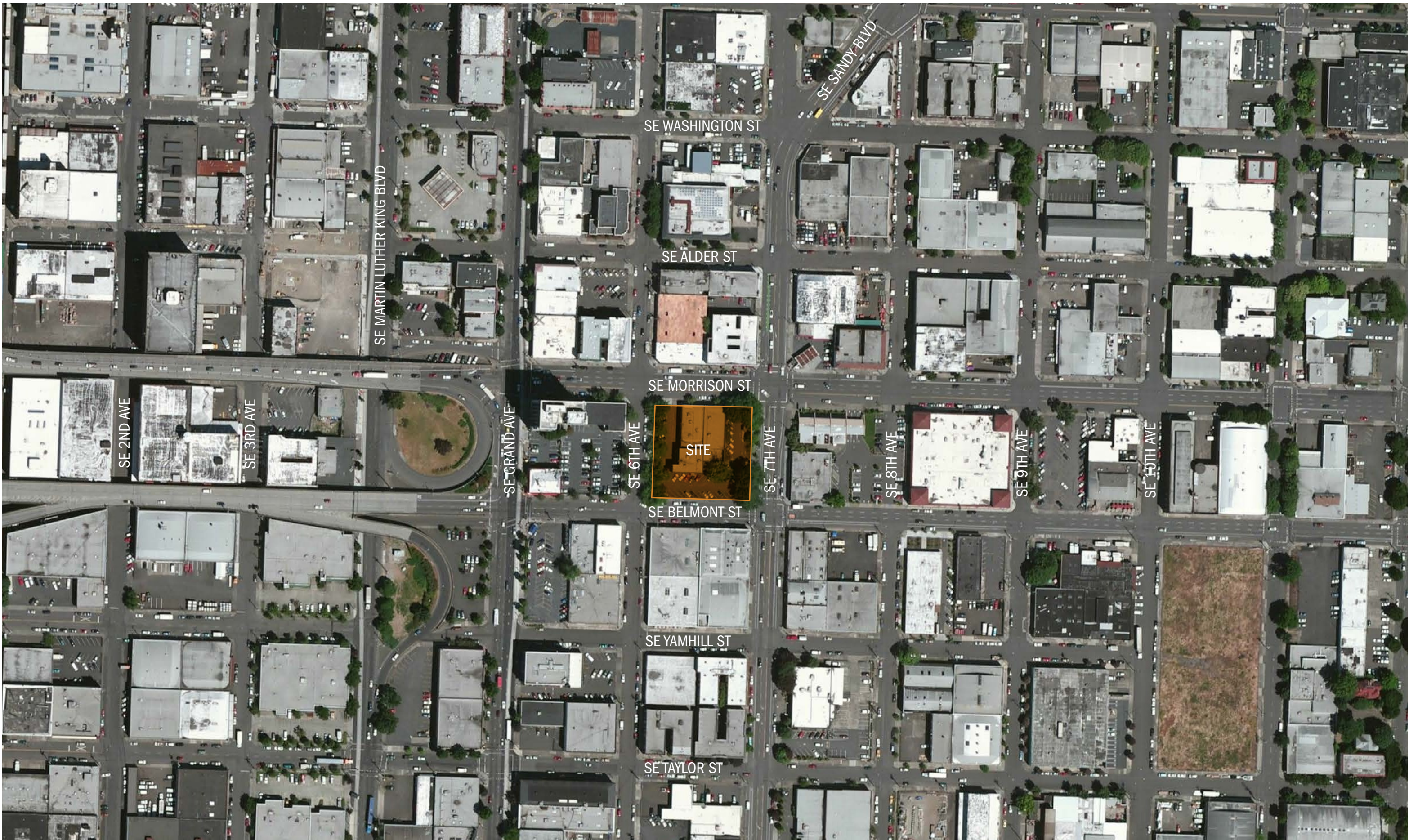


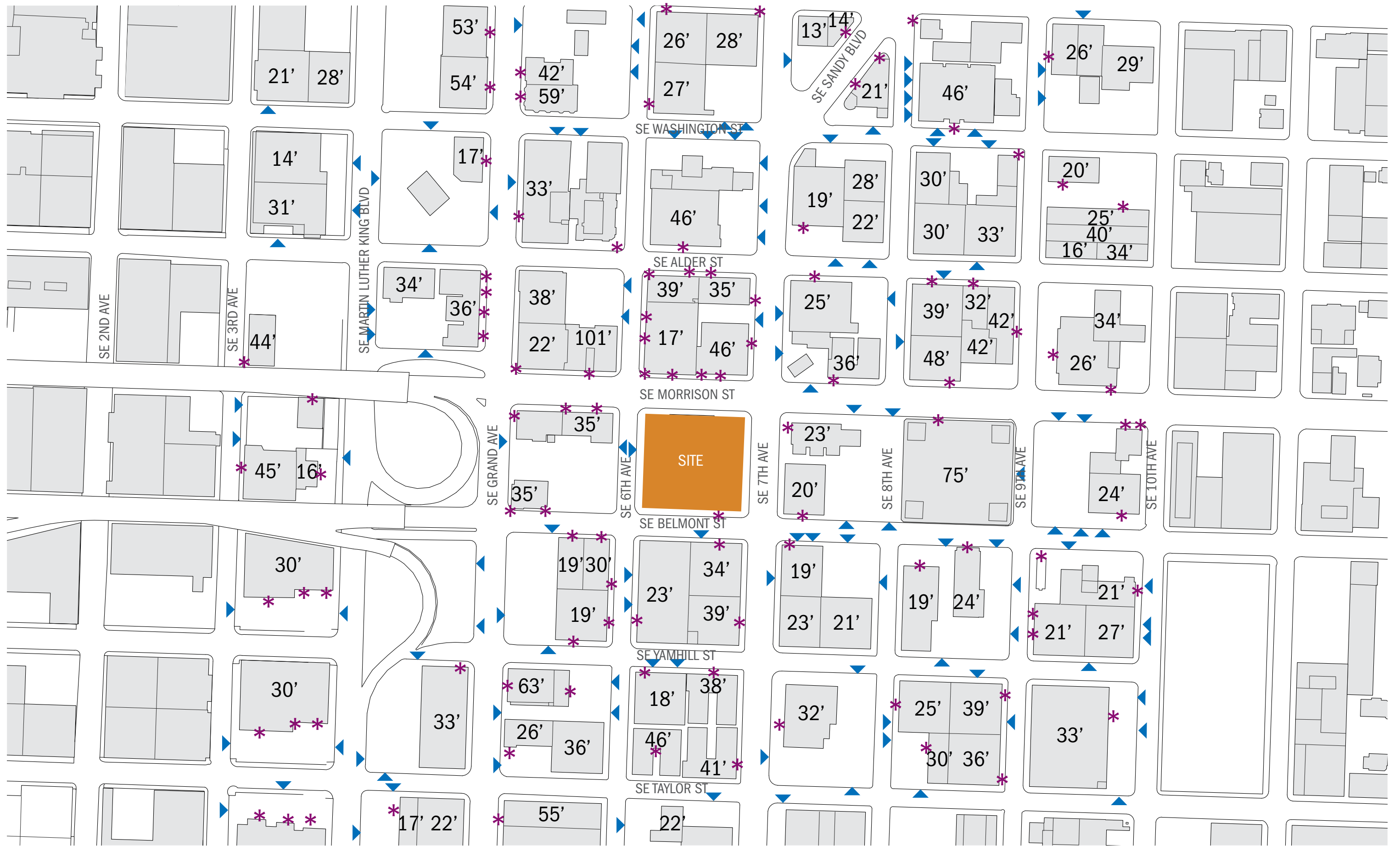












30' BUILDING FOOT PRINT AND HEIGHT ABOVE GRADE

* PEDESTRIAN ACCESS

▶ VEHICLE ACCESS

 100'





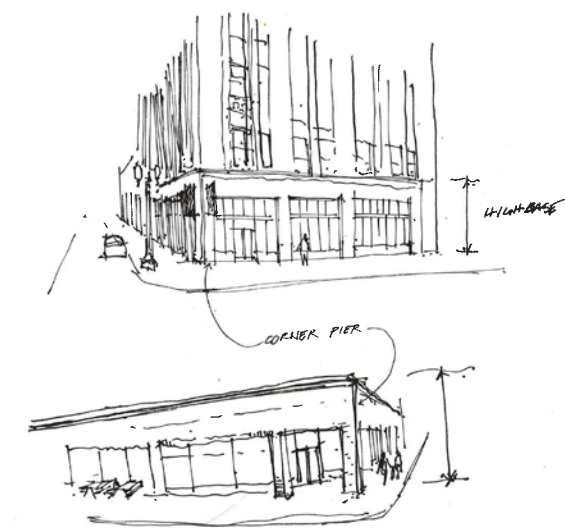
APPROACH ON SE BELMONT ST



APPROACH ON SE MORRISON ST

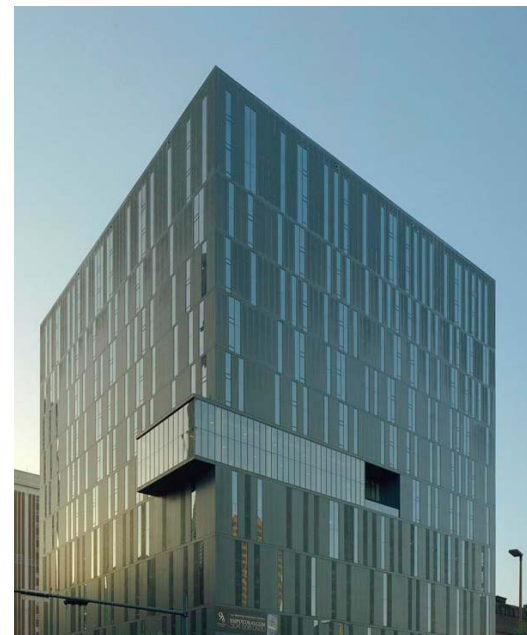


CLIFFORD APARTMENTS





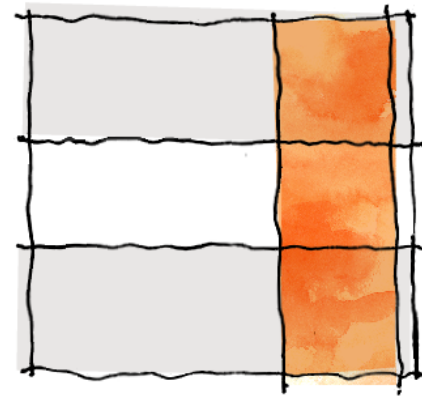
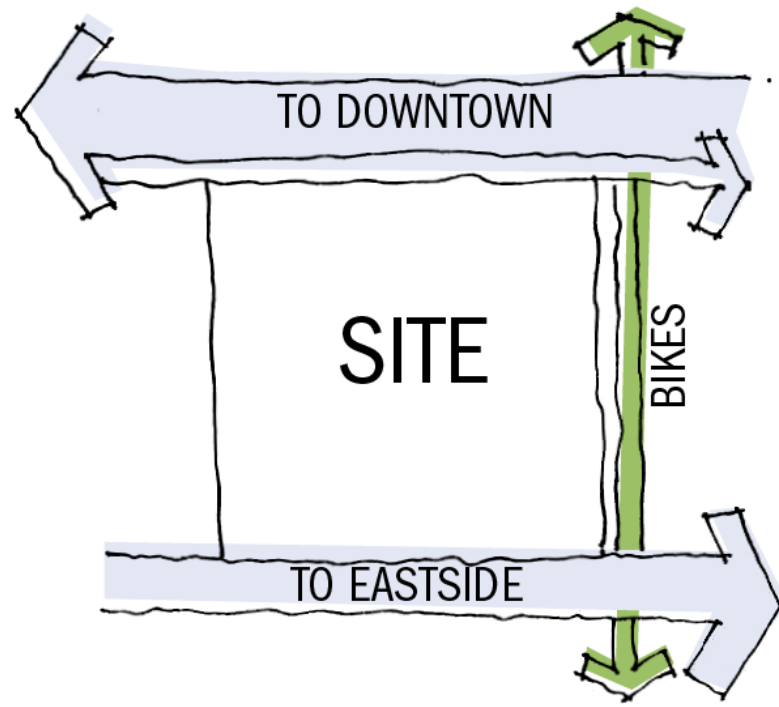
TUBE



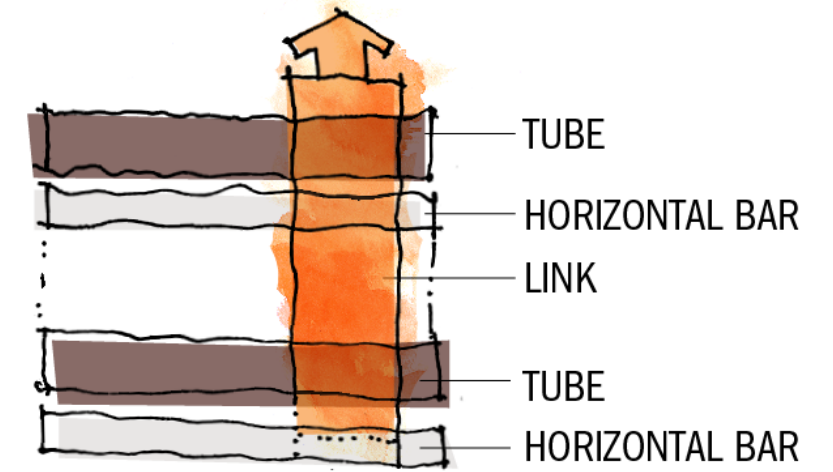
ABSTRACT PATTERN



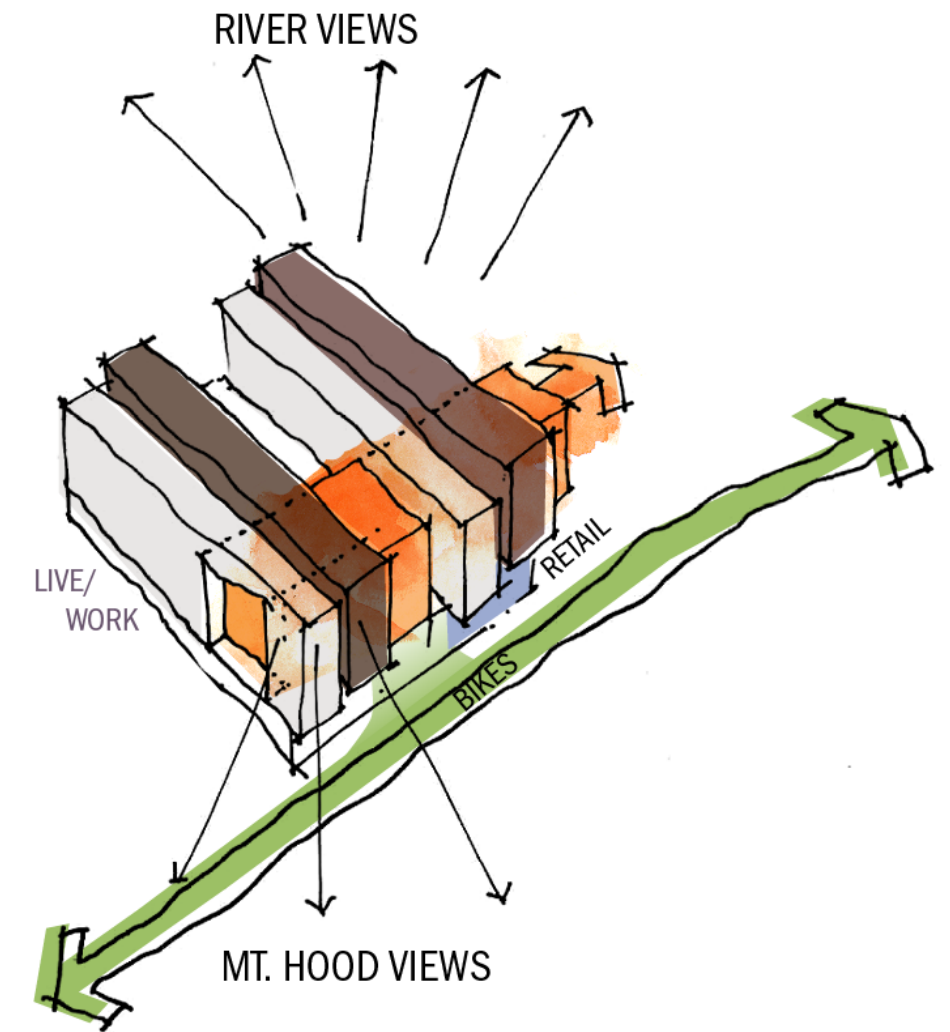
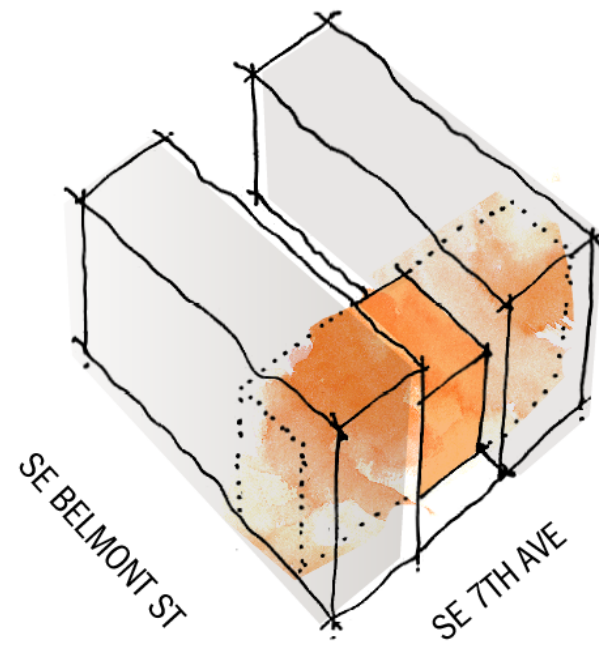
HORIZONTAL BAR



ARTICULATE MASSING



LAYERED BARS



STREET TREES W/O POWER LINE

STREET TREES WITH POWER LINE



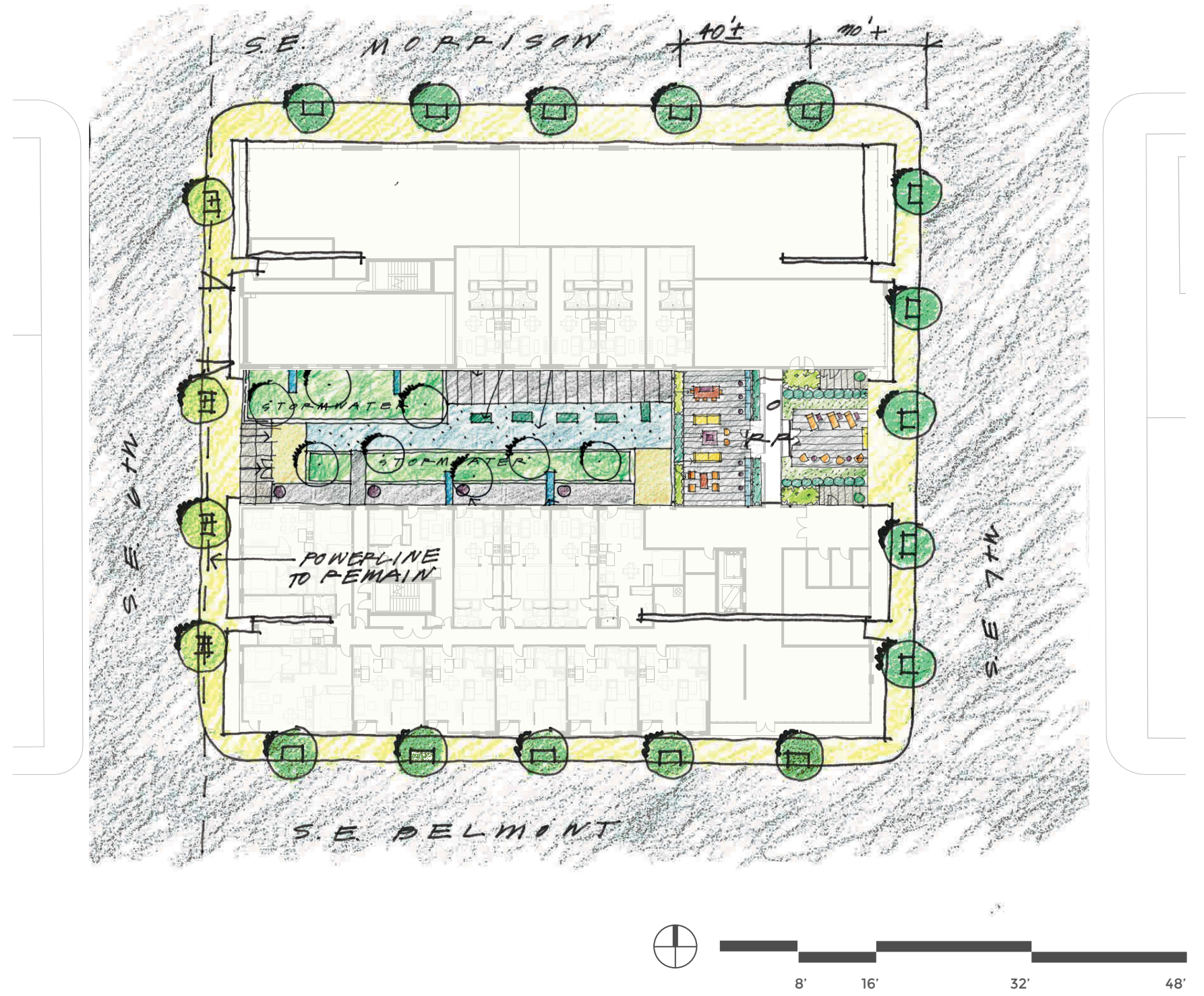
PYRMIDAL EUROPEAN HORNBEAM

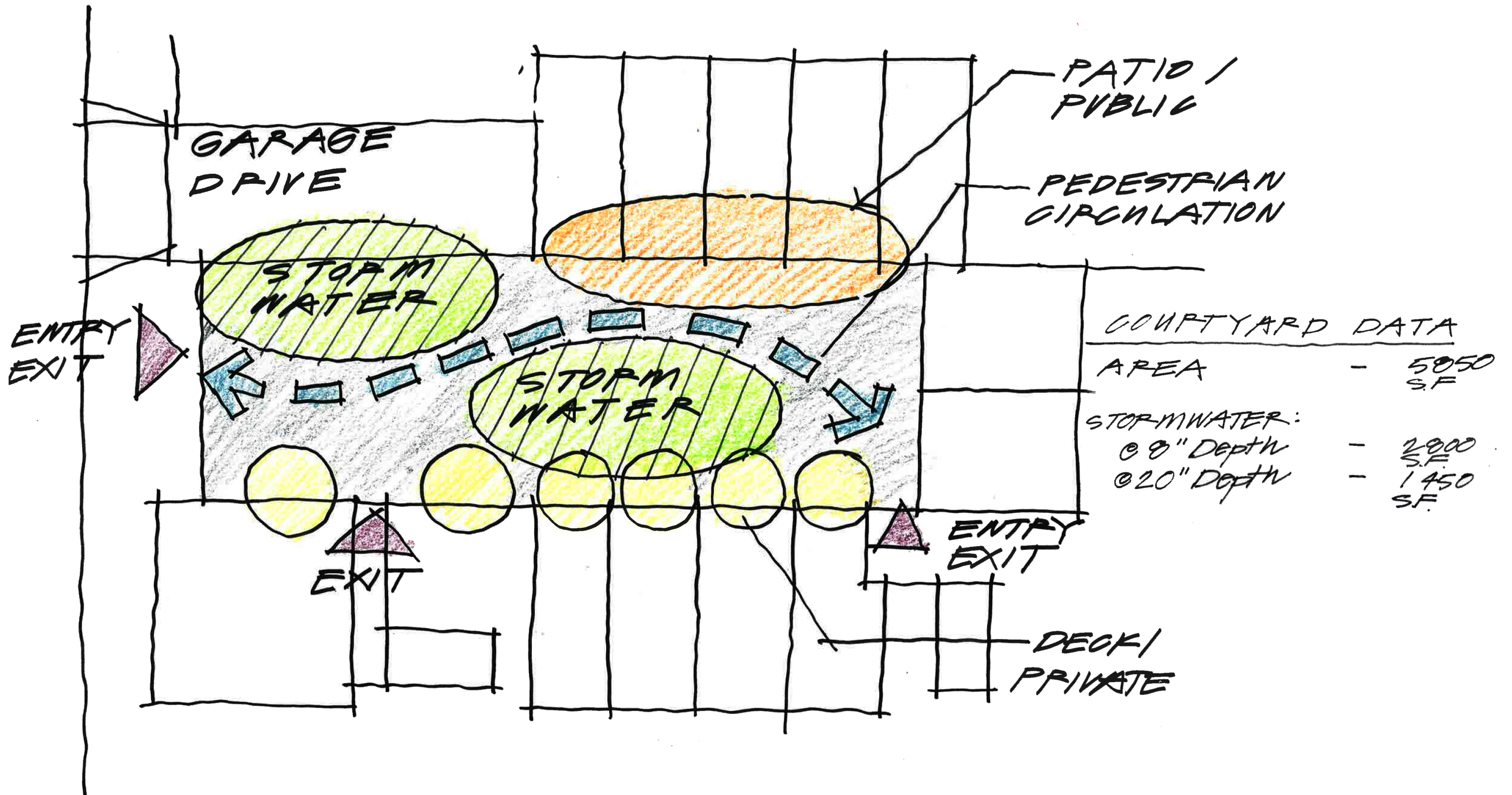


GINKGO SARATOGA



FOREST GREEN OAK





LANDSCAPE MATERIALS



CONCRETE PAVERS



CONCRETE PAVING



FENCE



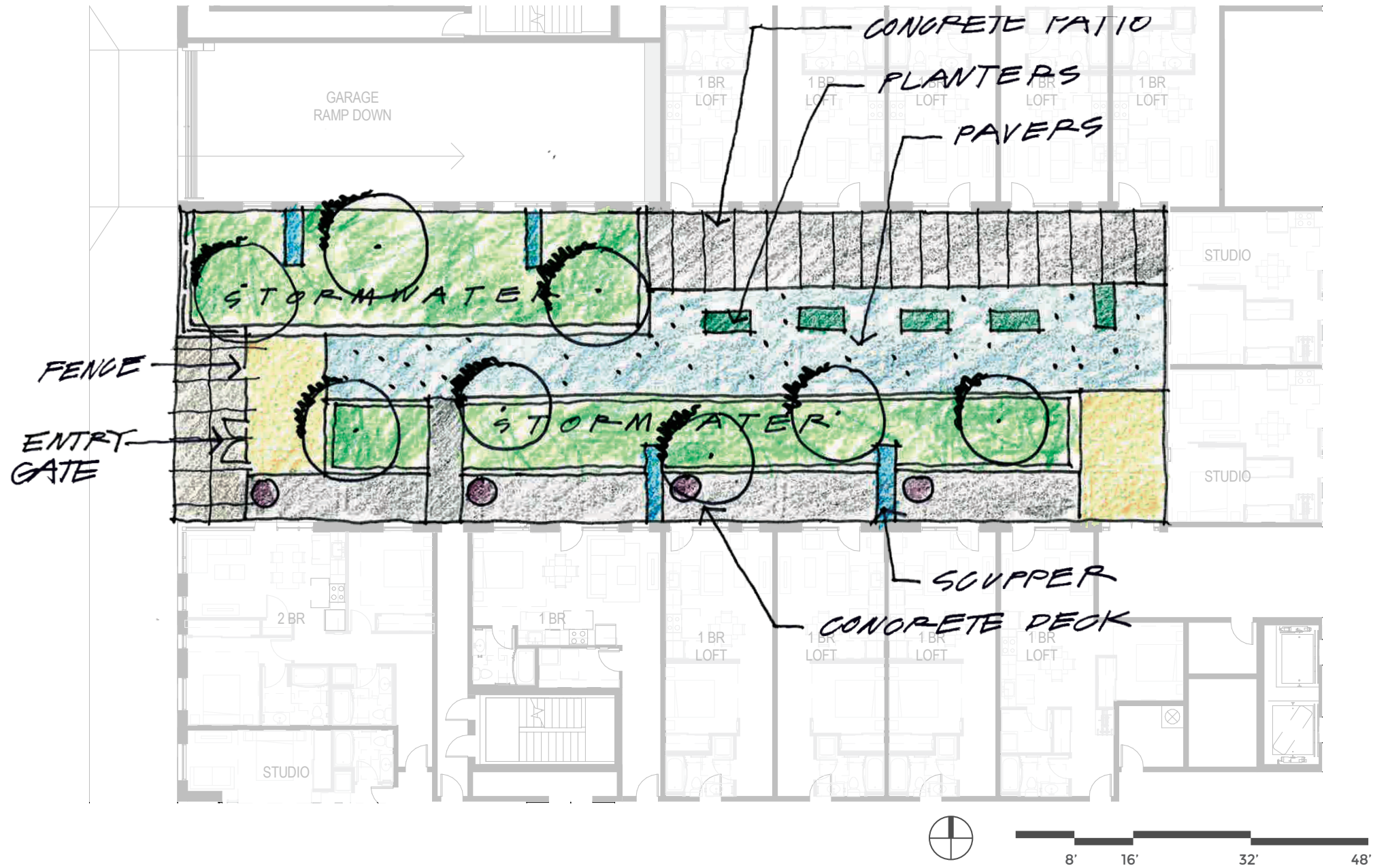
COBBLE



SCUPPER



PLANTER POTS



STORMWATER PLANTS



VINE MAPLE



CALIFORNIA GRAY RUSH



ORANGE SEDGE



SWORD FERN

LANDSCAPE MATERIALS



FIRE TABLE



TERRACE CHARACTER



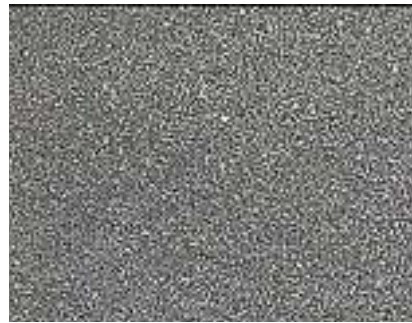
PLANTER POTS



OUTDOOR FURNITURE



CONCRETE PAVERS



CONCRETE PAVING

PLANTS



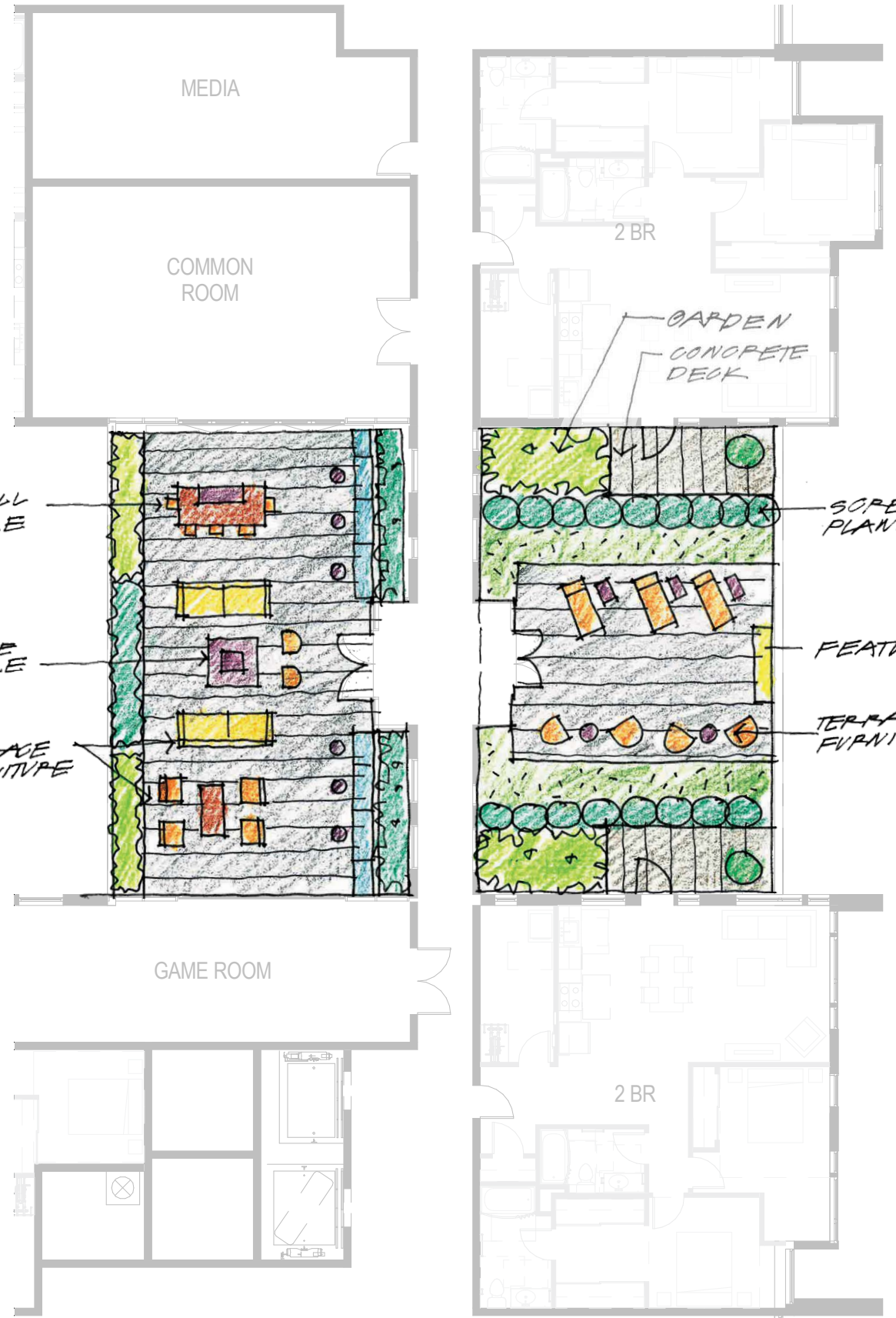
SCREENING SHRUB

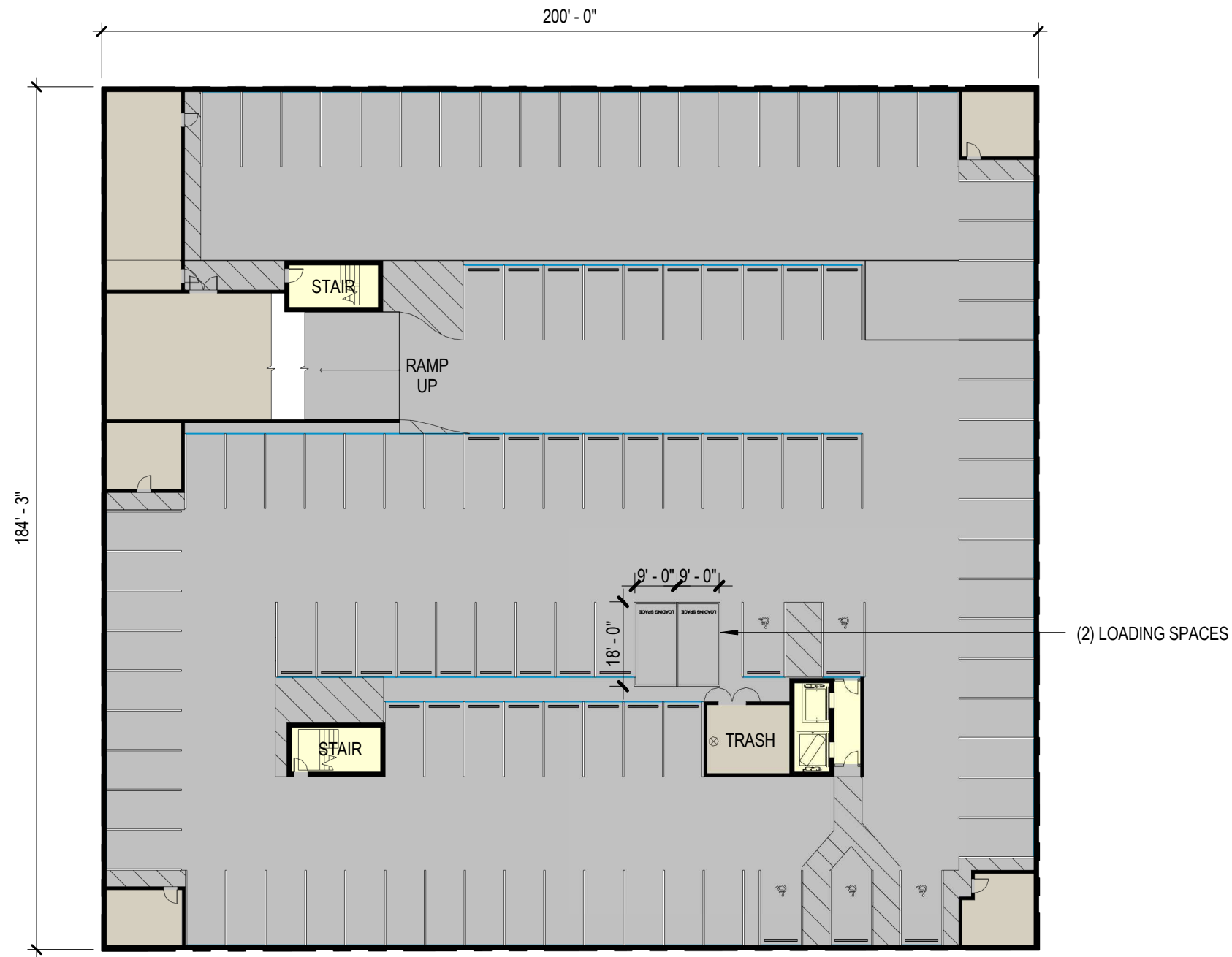


ORNAMENTAL GRASS

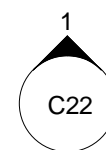


PERENNIALS









C24
1

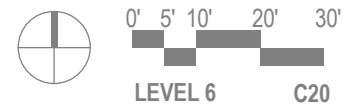


C25
1

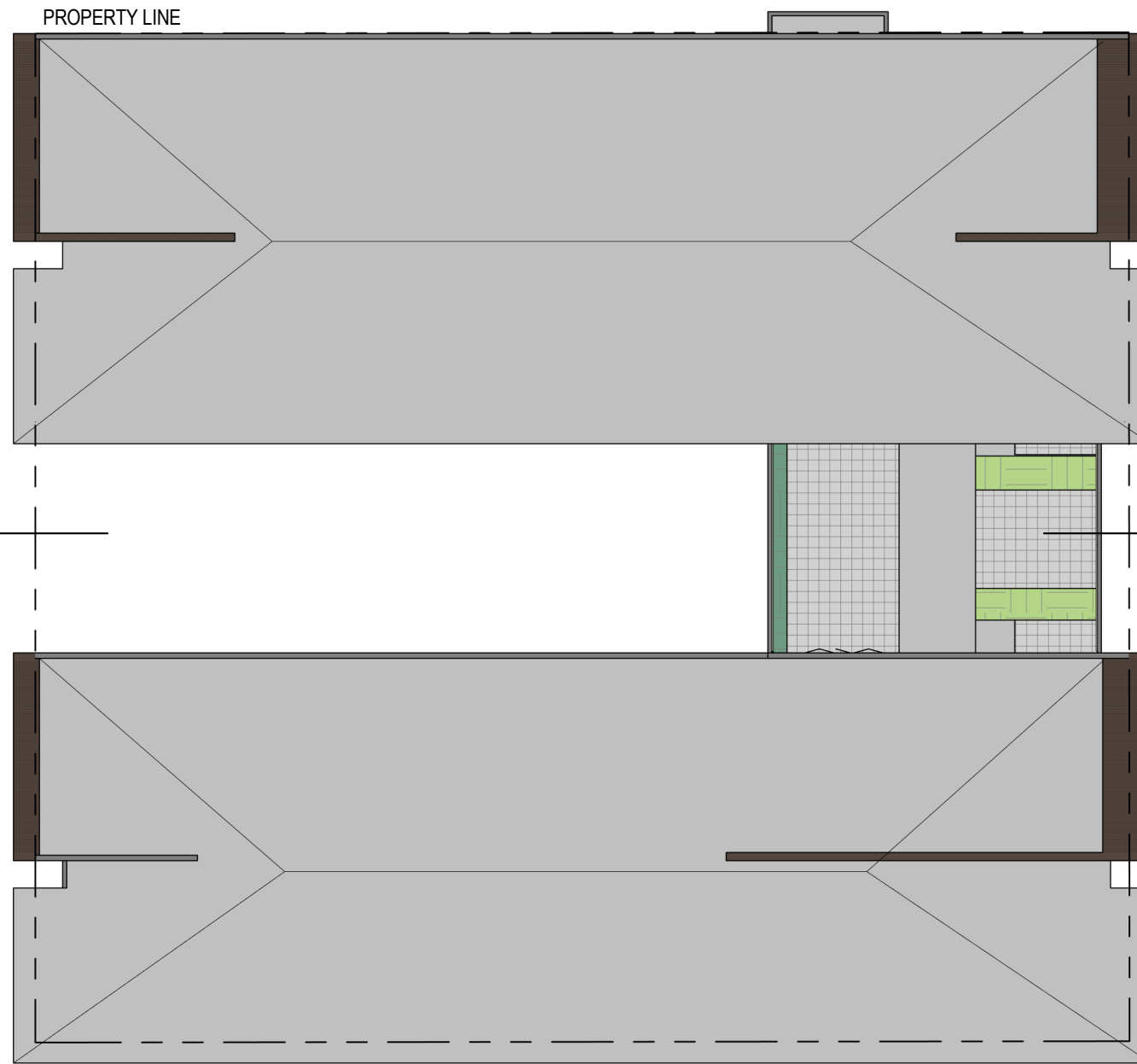
C23
1

1
C26

1
C22



C24
1



C25
1

C23
1

1
C26

1
C22













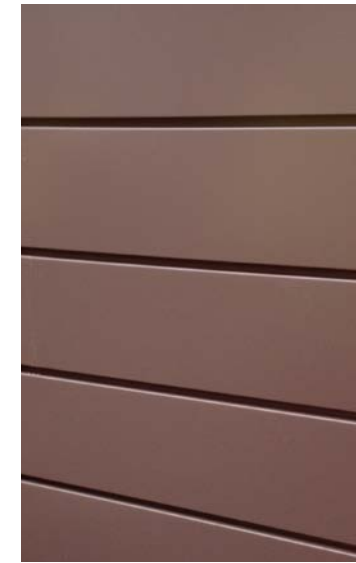
BUILDING SECTION E/W 1



METAL PANEL TYPE 1



METAL PANEL TYPE 2



METAL PANEL TYPE 3



METAL PANEL TYPE 4



MUTUAL MATERIALS GROUND FACE
CMU VENEER - CASTLE WHITE



FIBER CEMENT PANEL - WHITE

VPI VINYL WINDOW - WHITE

PTHP LOUVER - WHITE

ALUMINUM STOREFRONT - WHITE