



Terminal 6 Environmental Overlay Zone Code and Map Amendment

January 13, 2015



Bureau of Planning and Sustainability
Innovation. Collaboration. Practical Solutions.





West Hayden Island

Honda Dock

Oregon Slough

Smith and Bybee Wetlands





Site Plan



Proposed Code Amendment

CHAPTER 33.430 ENVIRONMENTAL OVERLAY ZONES

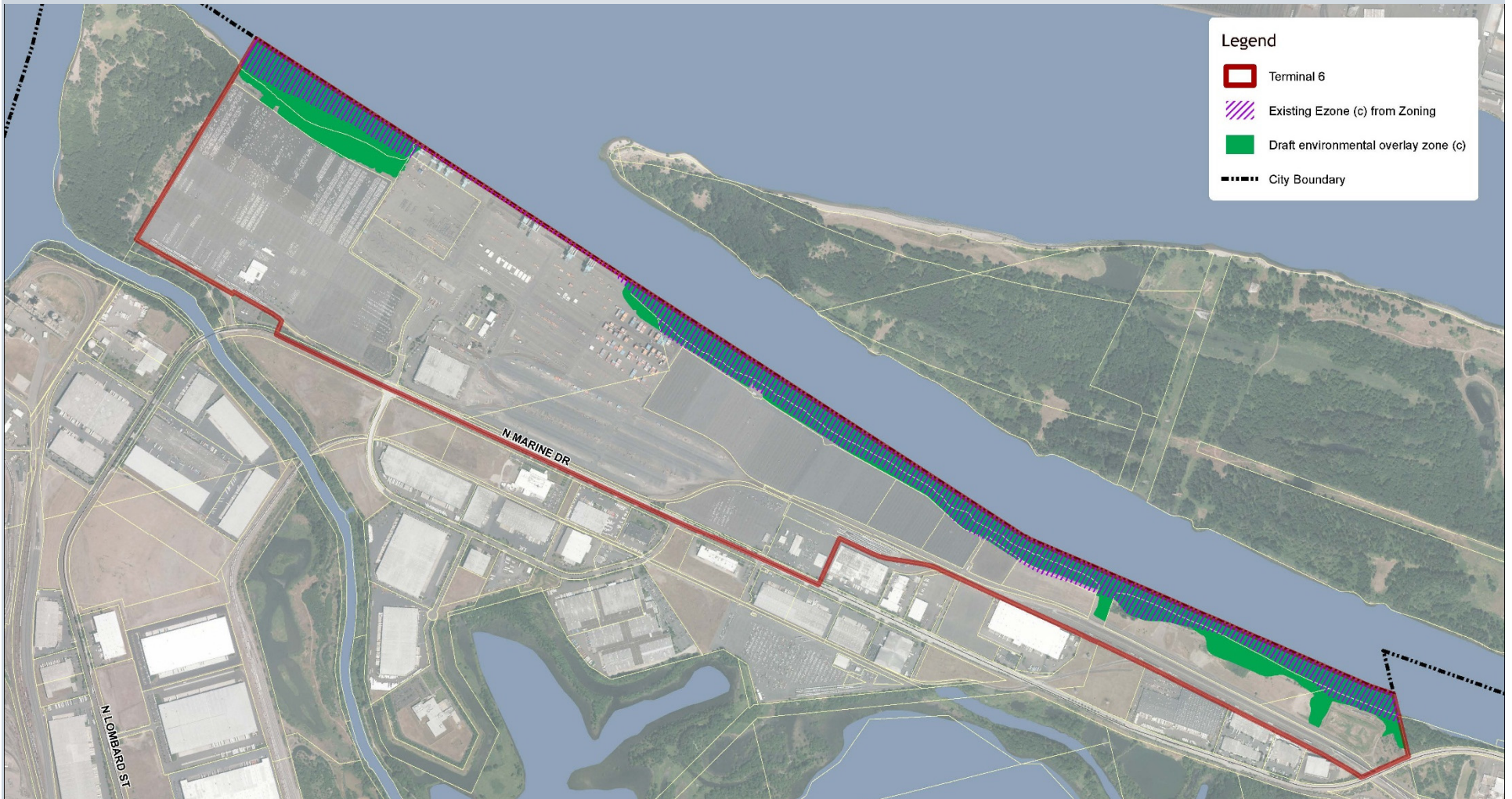
33.430.090 Prohibitions

The following items are prohibited in all environmental zones. Prohibitions apply to both transition areas and resource areas:

- A. The use, packaging, transportation, or storage of hazardous substances, except as follows:
 - 1. Transportation of hazardous substances through environmental zones by rail or on designated truck routes is allowed; ~~and~~
 - 2. The transportation of propane through environmental zones is allowed on a site that is:
 - a. Zoned Heavy Industrial; and
 - b. Has a primary river-dependent industrial use; and



Proposed Map Amendment





Issues

- Safety/Risk
- Climate Action Plan
- GHG Emissions (locally)
- GHG Emissions (globally)
- Habitat Impacts
- Boating Access
- Jobs
- Tax Revenue



PSC Action

- Legislative Project
- Make a recommendation to City Council on code amendment
- Make a recommendation to City Council on map amendment
- Transmittal letter to City Council can identify issues to consider

