



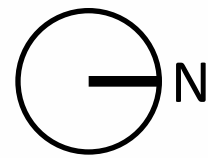






NW Overton Street

NW Pettygrove Street

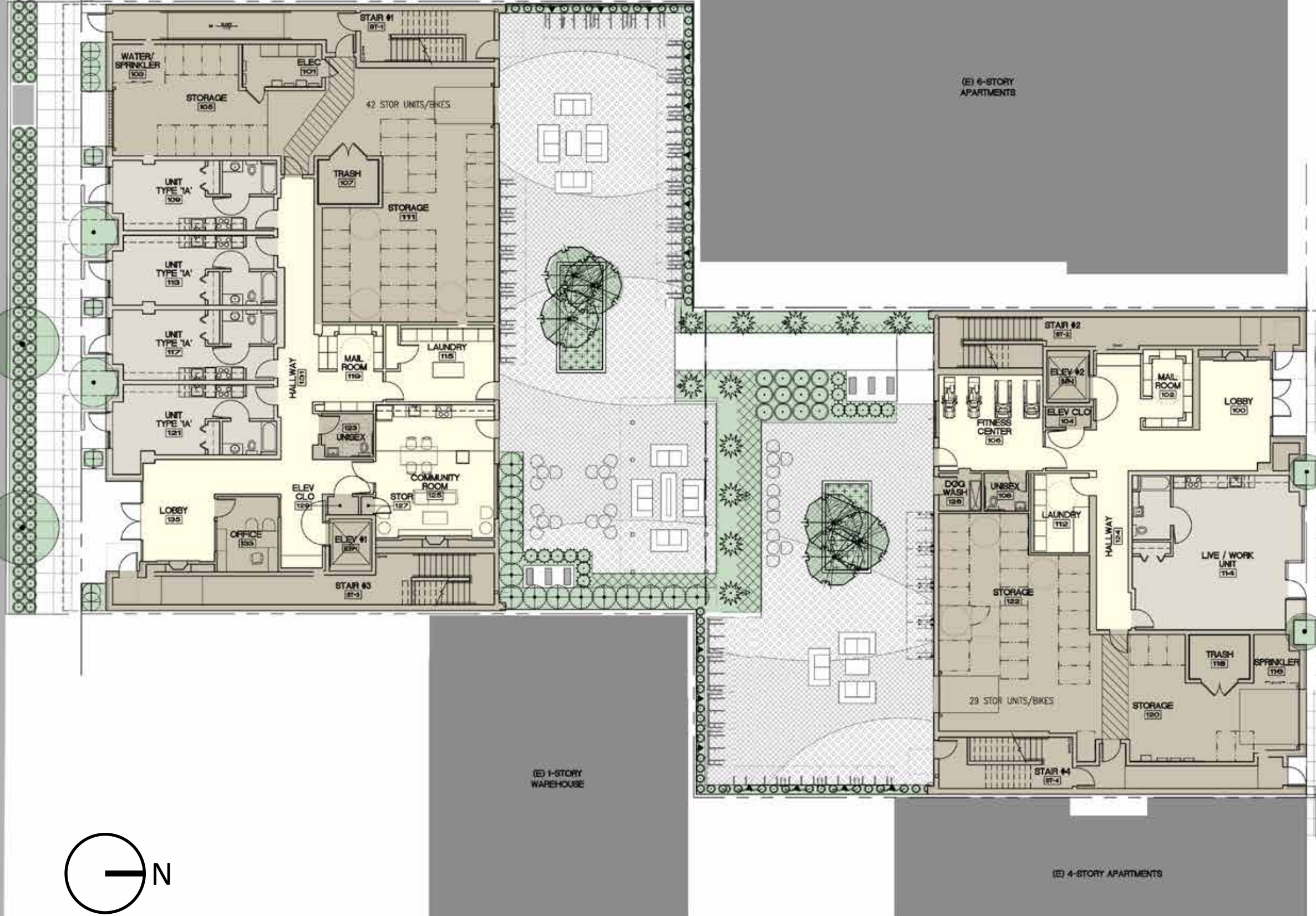


(E) 2-STORY OFFICE

(E) 6-STORY APARTMENTS

(E) 1-STORY WAREHOUSE

(E) 4-STORY APARTMENTS



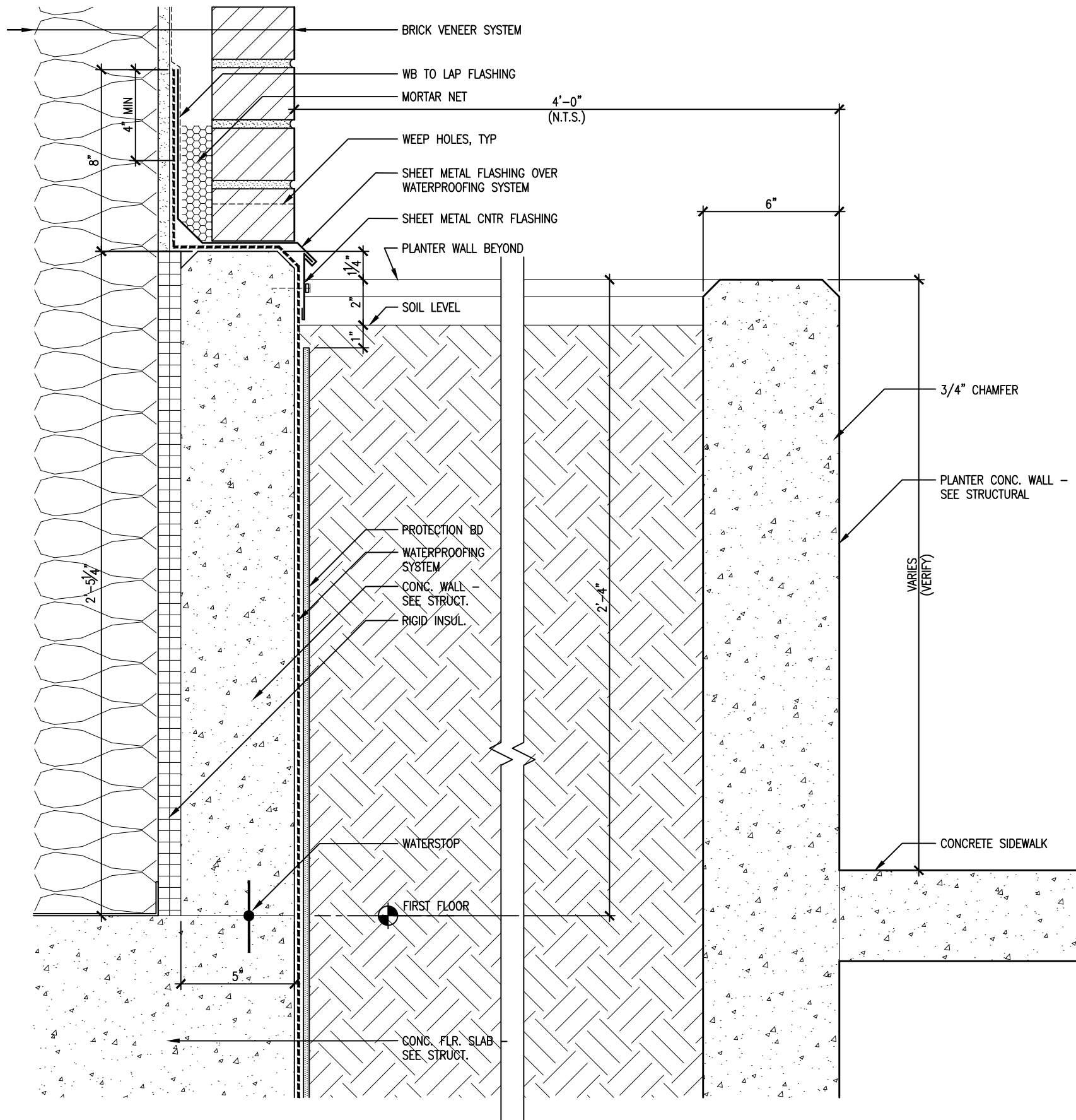


Previous Proposal

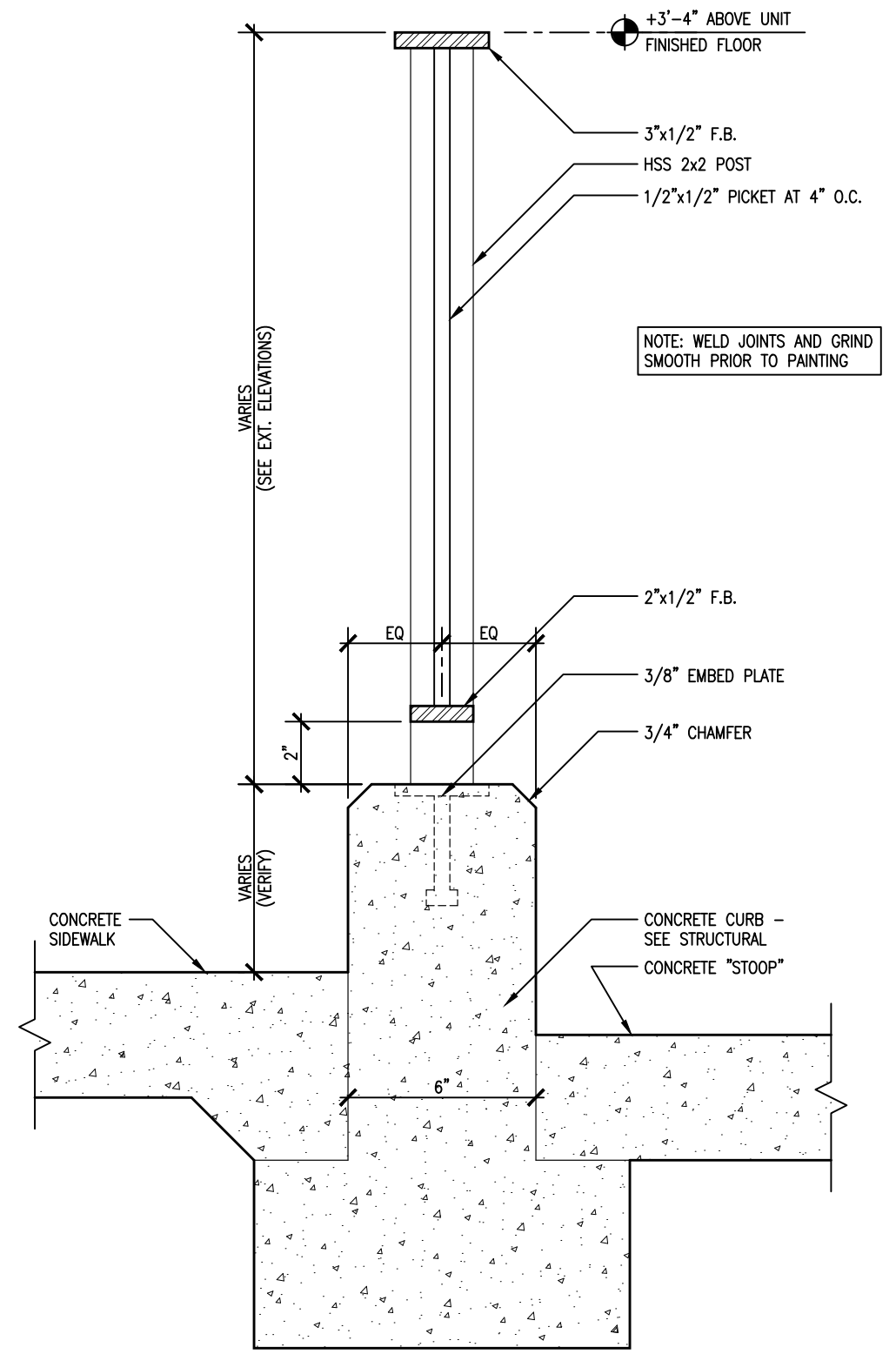


Revised Design



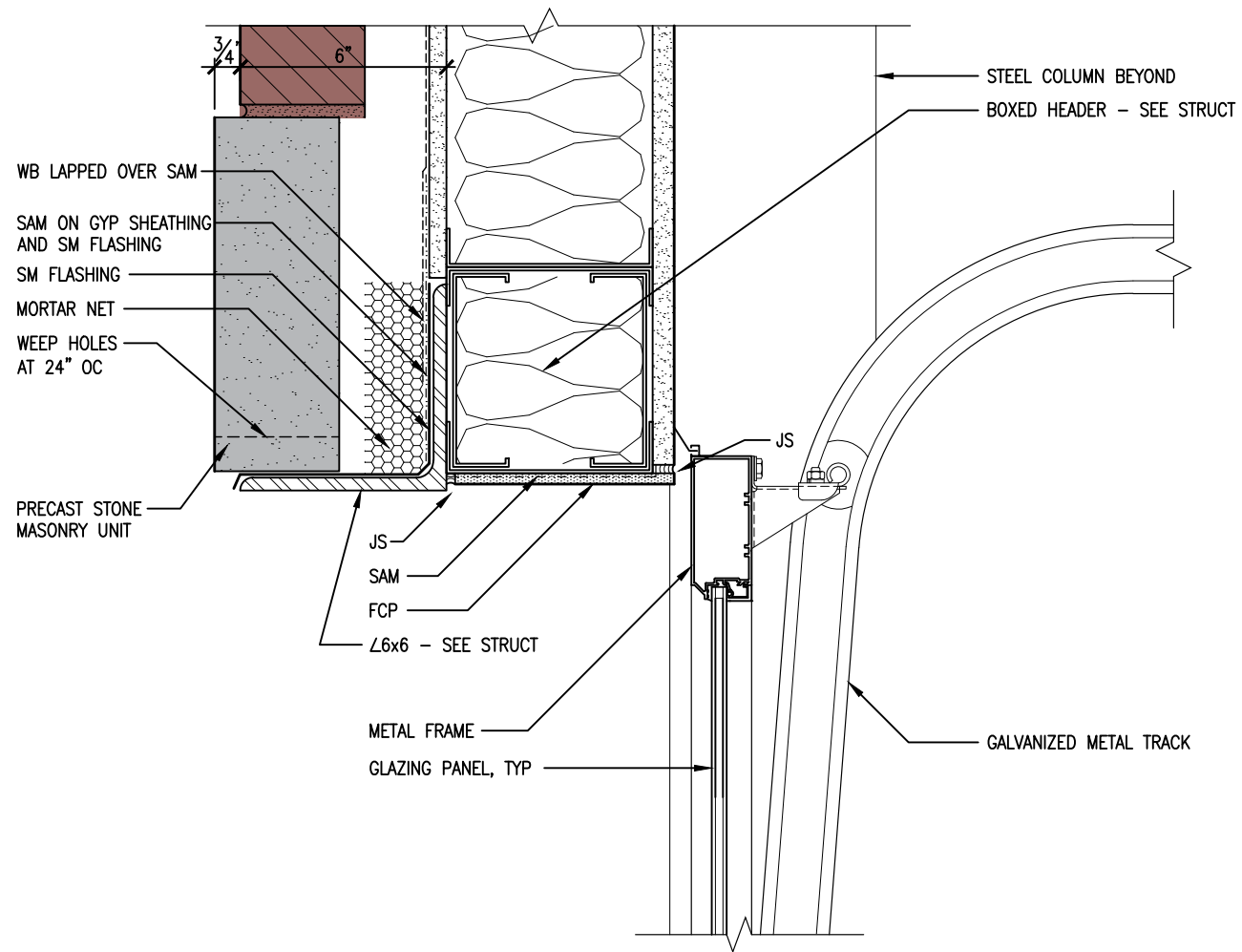


A1 PLANTER SECTION AT EXTERIOR BRICK WALL
3"=1'-0"

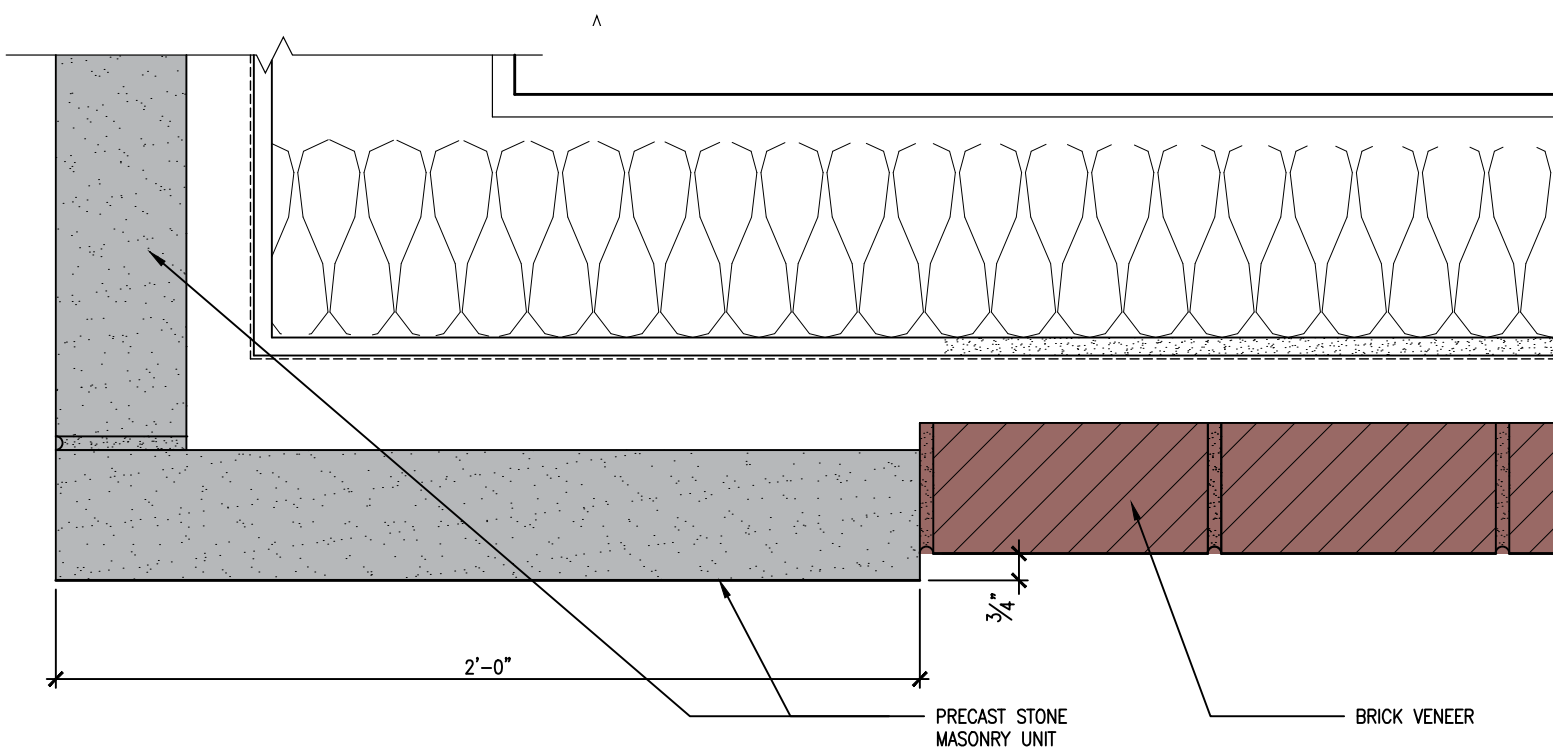
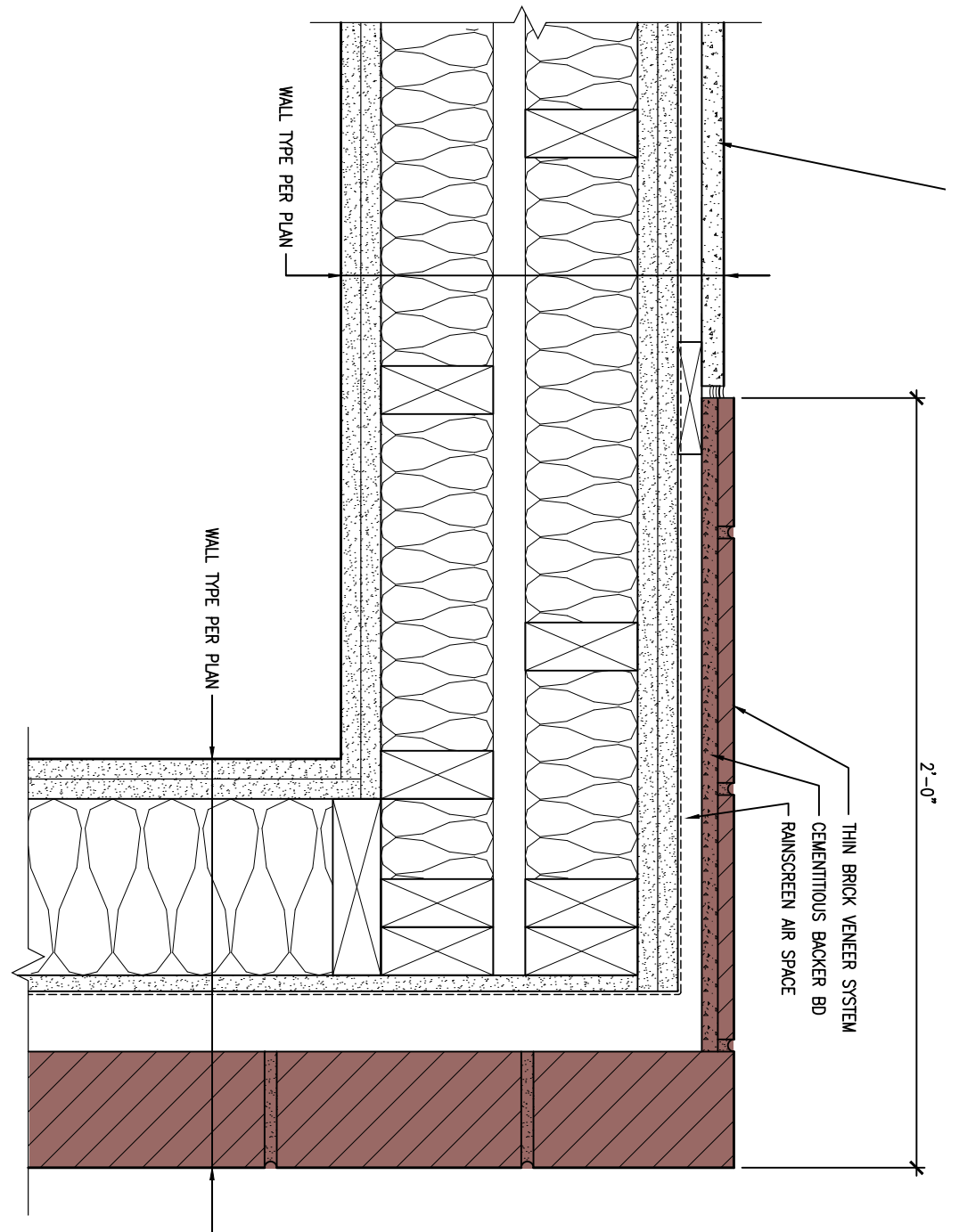


A2 RAILING SECTION
3"=1'-0"





B3 SECTIONAL DOOR HEAD AT BRICK VENEER WALL
 3" = 1'-0"



E4 PRECAST STONE MASONRY UNIT AT ENTRY
 3" = 1'-0"



1230 NW 21st



NW 20th & Flanders



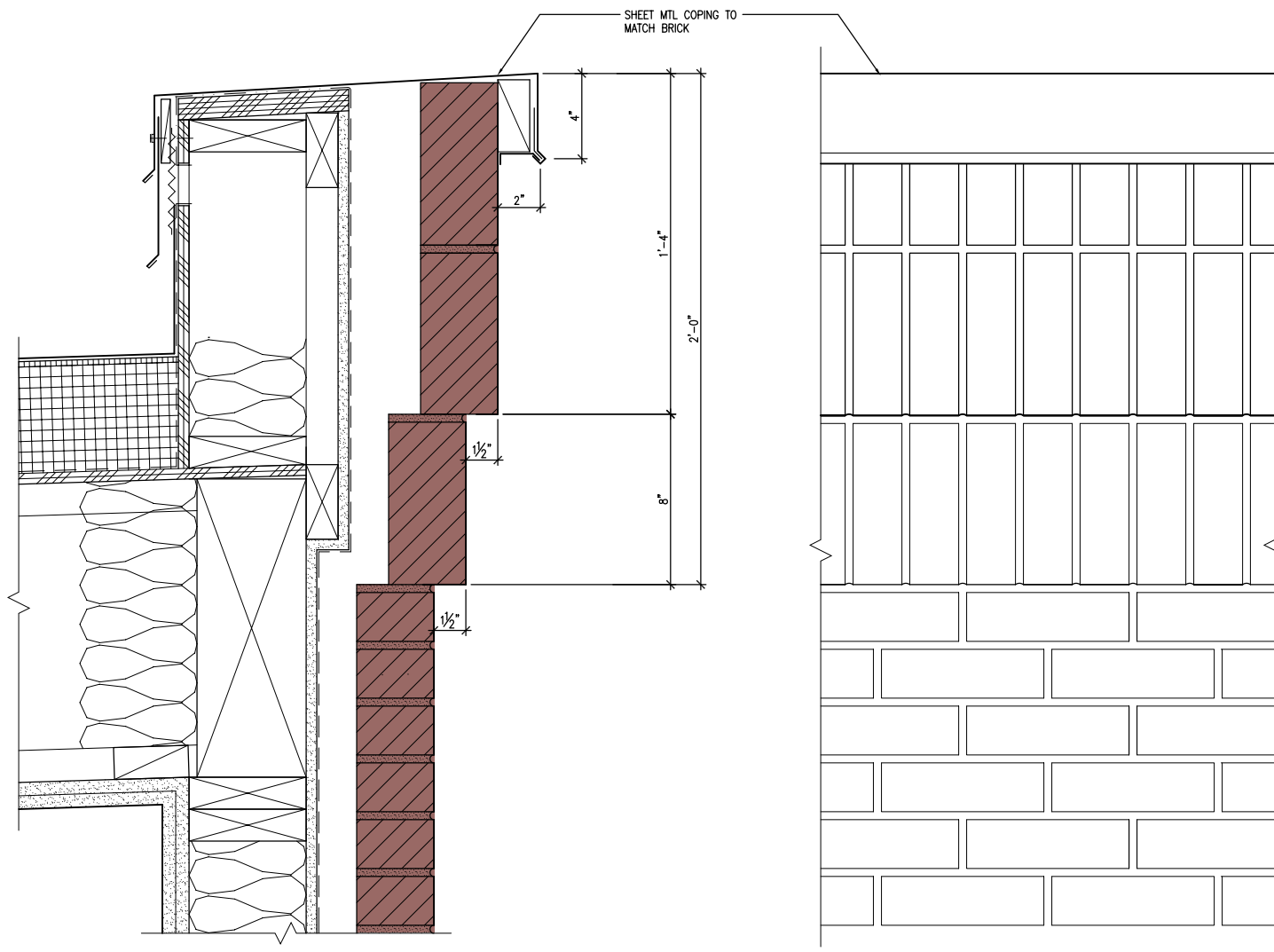
1731 NW Everett



2221 NW Flanders







SECTION

ELEVATION



PERSPECTIVE

Extruded Aluminum Brick Vent

Application and Design

Brick vents provide a permanent means of ventilation for crawl spaces, hung ceilings, incinerator rooms, chimney flues, foundations, pipe spaces and corridors. Extruded construction provides a quality finished appearance. A high water stop at the rear and deep overlapping blades with storm stops provide maximum resistance to rain and weather.

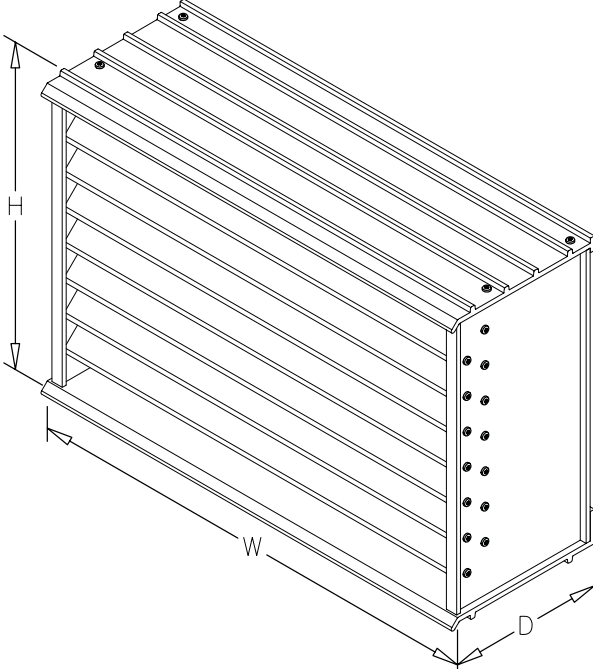
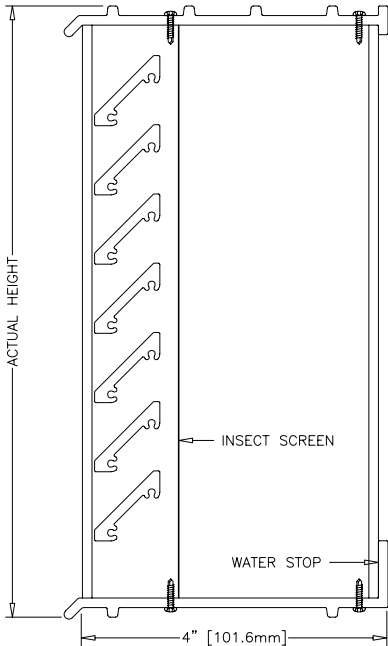
Standard Construction

- Frame** Heavy gauge extruded 6063T5 aluminum, 4 in. x 0.125 in. nominal wall thickness
- Blades** Heavy gauge extruded 6063T5 aluminum, 0.125 in. nominal wall thickness, positioned at 45° angles
- Construction** . . . Mechanically fastened
- Insect screen** . . 18 in. x 14 in. aluminum mesh, inside mount (rear)
- Finish** 204-R1 Clear anodize

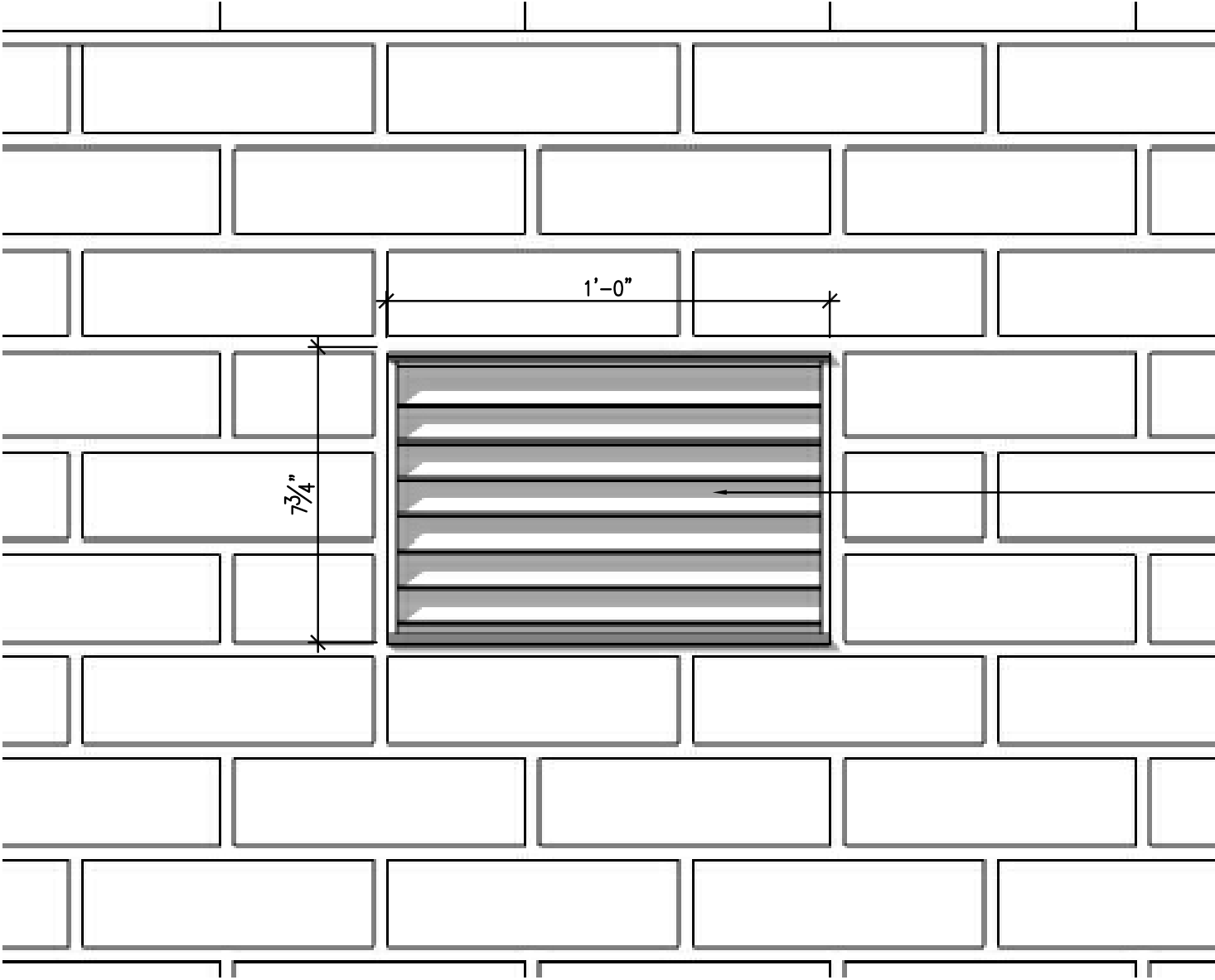
- Available Sizes**
- 8 1/8 in. W x 2 3/8 in. H
 - 8 1/8 in. W x 4 3/4 in. H
 - 8 1/8 in. W x 7 3/4 in. H
 - 12 in. W x 2 3/8 in. H
 - 12 in. W x 4 3/4 in. H
 - 12 in. W x 7 3/4 in. H
 - 12 in. W x 11 3/4 in. H
 - 15 5/8 in. W x 7 3/4 in. H
 - 15 5/8 in. W x 15 3/4 in. H
 - 16 1/2 in. W x 2 3/8 in. H
 - 16 1/2 in. W x 4 3/4 in. H
 - 16 1/2 in. W x 7 3/4 in. H
 - 16 1/2 in. W x 15 3/4 in. H
 - 24 in. W x 2 3/8 in. H
 - 24 in. W x 4 3/4 in. H
 - 24 in. W x 7 3/4 in. H
 - 32 in. W x 7 3/4 in. H
 - 48 in. W x 7 3/4 in. H

Options (at additional cost)

- Opposed blade damper
- Straight duct
(0.063 in aluminum for up to 18 in. wall thickness)
- A variety of architectural finishes including:
 - Mill
 - Integral color anodize (medium or dark bronze only)
 - Baked enamel paint
 - Kynar paint

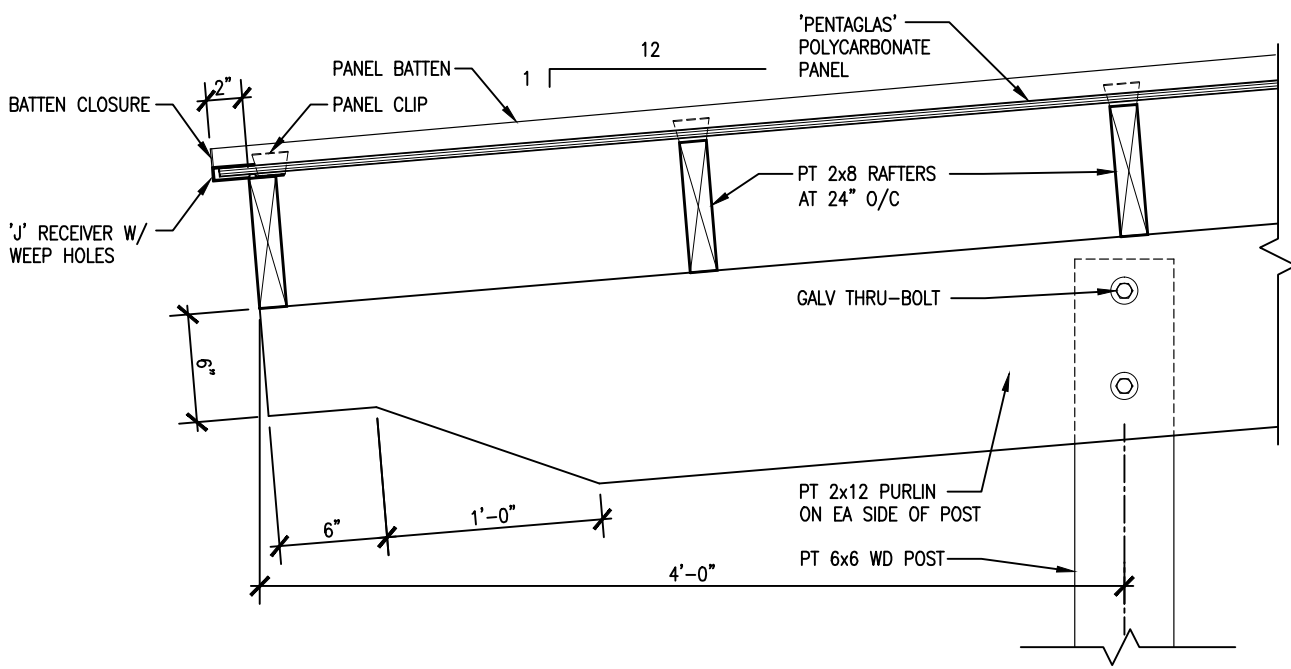
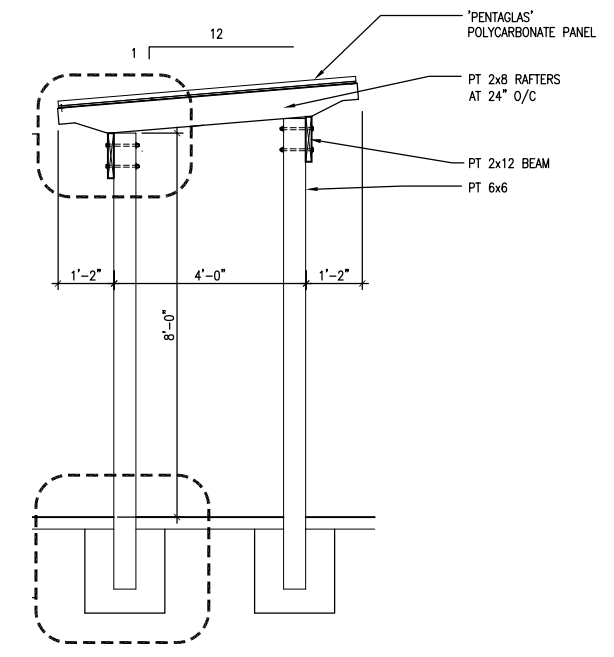
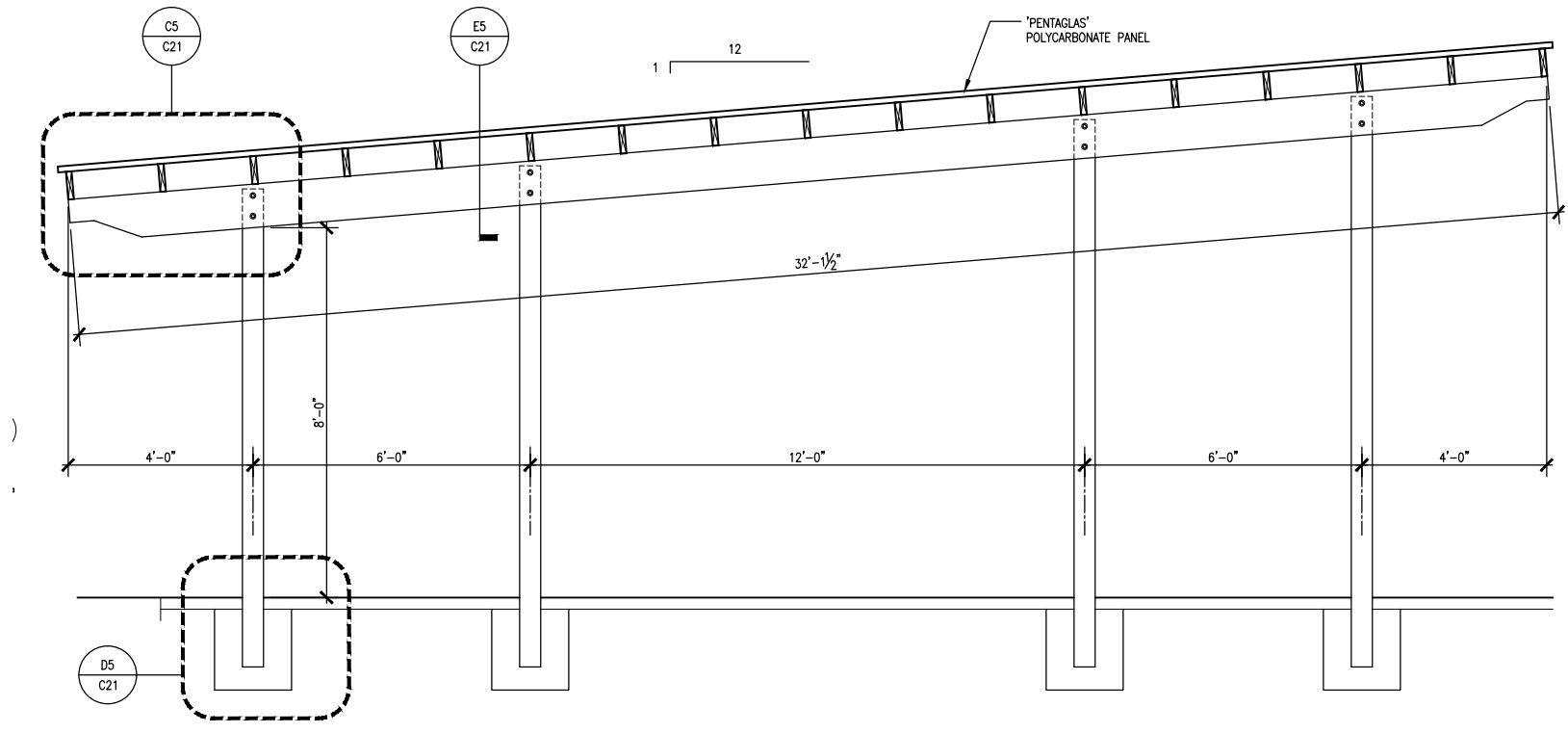


*Width dimension in actual. Height dimension 1/4 in. greater due to mortar ribs.

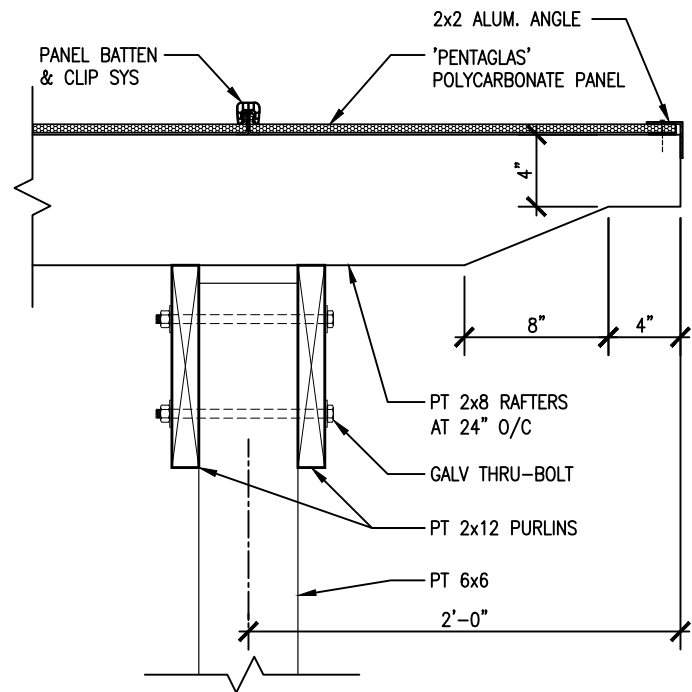








C5 TRELLIS PURLIN TAIL
1-1/2" = 1'-0"



E5 TRELLIS RAFTER TAIL
1-1/2" = 1'-0"

