



# 2035 Comprehensive Plan *Work Session*

November 18, 2014



Bureau of Planning and Sustainability  
Innovation. Collaboration. Practical Solutions.



# Today's Agenda

- CIC Update
- Bureau Observations
- Work Session Schedule
- Commissioner Observations



# Plan Elements



... COMPREHENSIVE PLAN UPDATE ...

## 2035 Comprehensive Plan Proposed Draft

What's Inside?

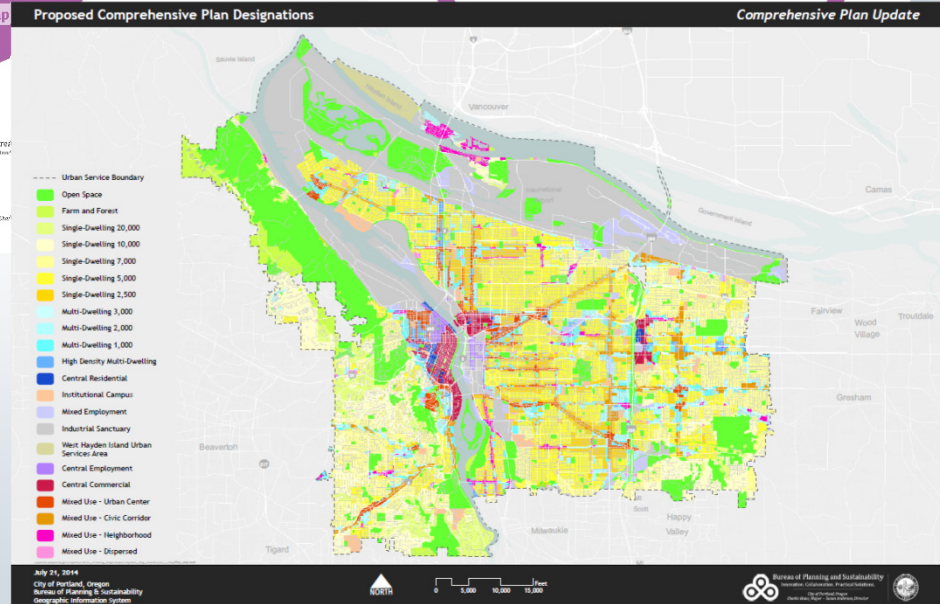
- Introduction
- About the Plan
- Goals and Policies
- List of Significant Projects
- Comprehensive Plan Map
- Glossary

July 2014  
Portland's Comprehensive Plan Update  
For more information, visit:  
[www.portlandoregon.gov/bps/pdxcompplan](http://www.portlandoregon.gov/bps/pdxcompplan)

... COMPREHENSIVE PLAN UPDATE ...

## Citywide Systems Plan

Proposed Draft



# The Facts

- Buildable Lands Inventory (BLI)
- Infrastructure Condition and Capacity
- Housing Needs Analysis
- Economic Opportunities Analysis (EOA)\*
- Natural Resources Inventory (NRI)

\* The EOA has been withdrawn and will be revised in 2015



# THE PORTLAND PLAN

Prosperous. Educated. Healthy. Equitable.



Bureau of Planning and Sustainability  
Innovation. Collaboration. Practical Solutions.



# Performance Measures

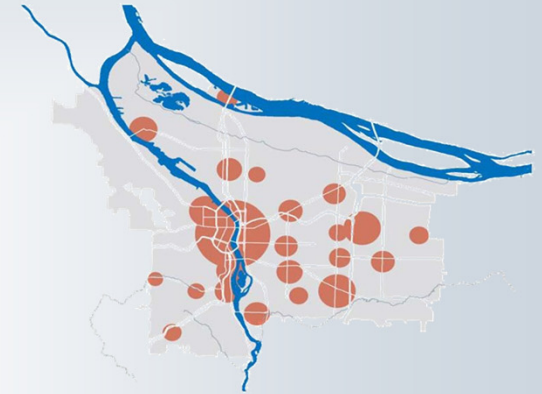
Complete Neighborhoods	Tree Canopy
Access to Frequent Transit	Watershed Health
Access to Family Friendly Bike Network	Vehicle Miles Traveled
Housing Mix	Mode Split
Housing Affordability	Carbon/GHG Emissions
Risk of Displacement/Gentrification	Access to Family Wage Jobs
Parks & Natural Area Access	



# Alternative Scenarios



# Comparing Growth Patterns



Default Growth Scenario

Corridor Growth Scenario

Hubs Growth Scenario

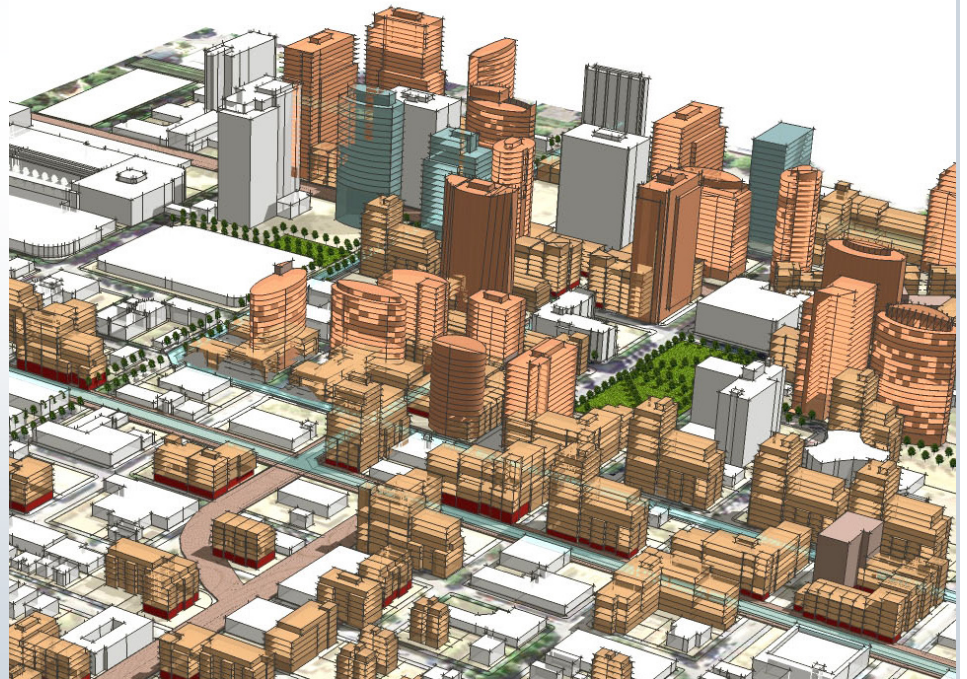
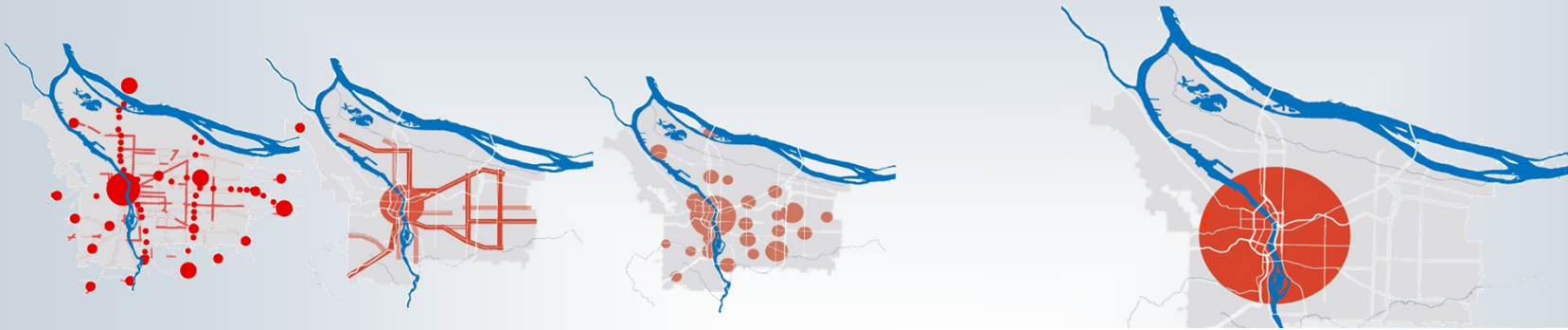


Bureau of Planning and Sustainability  
Innovation. Collaboration. Practical Solutions.





# Comparing Growth Patterns



Bureau of Planning and Sustainability  
Innovation. Collaboration. Practical Solutions.



# Legacy Development Pattern

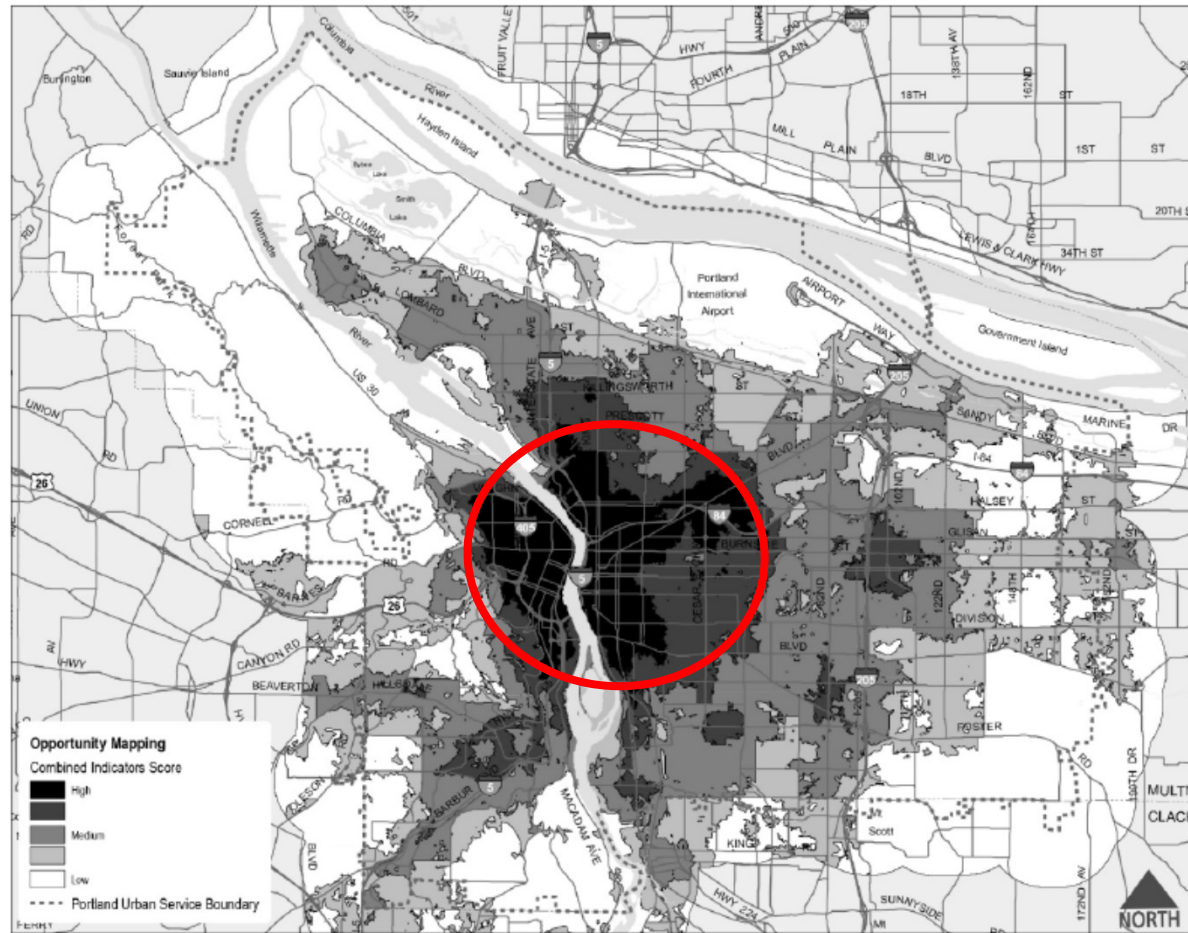


Bureau of Planning and Sustainability  
Innovation. Collaboration. Practical Solutions.



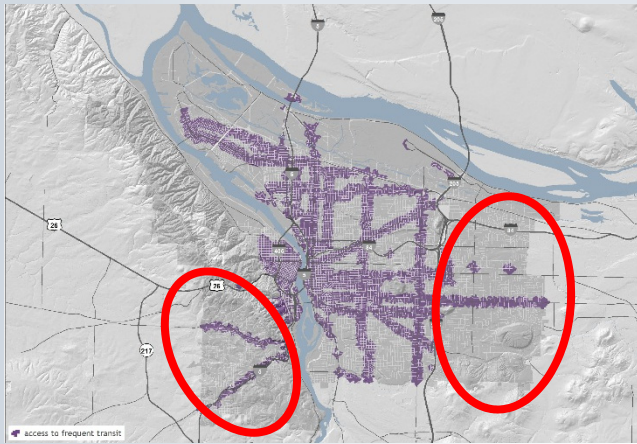
# Access to Opportunity

Figure 5-1. Housing Opportunity Map

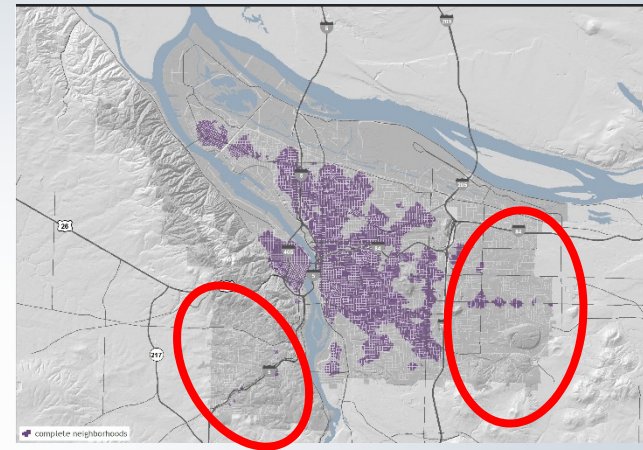


# Gaps

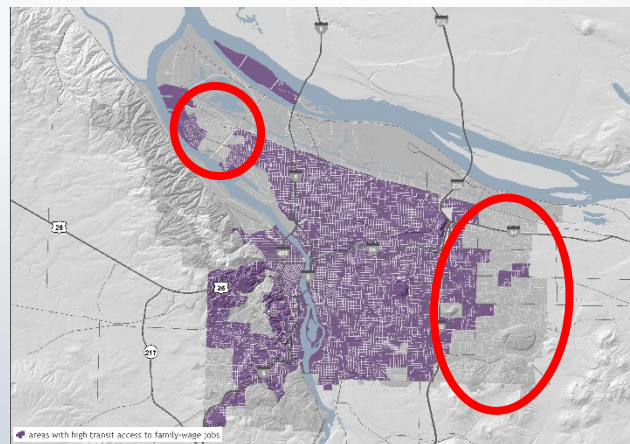
## Frequent Transit



## Complete Neighborhoods



## Access to Jobs



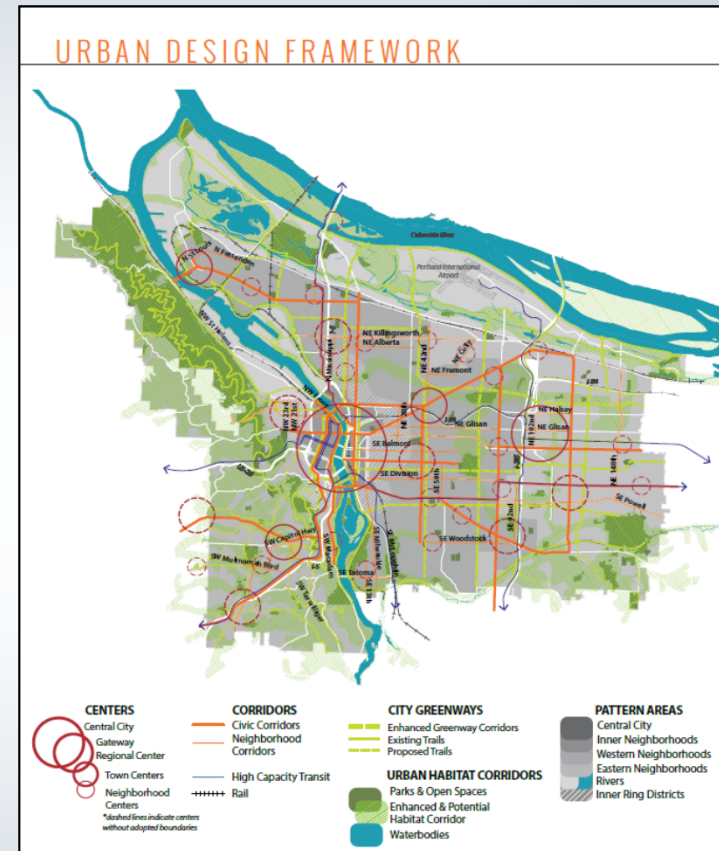
# Seven Key Directions

1. Create complete neighborhoods
2. Encourage job growth
3. Create a low-carbon community
4. Protect natural areas and open spaces
5. Provide reliable infrastructure that equitably serves all parts of the city
6. Improve Resiliency
7. One size does not fit all

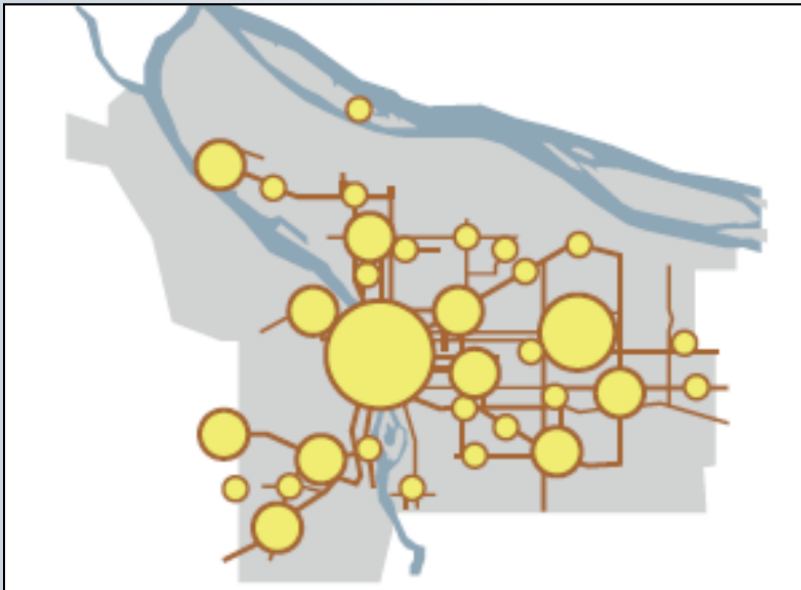


# Urban Design Terms

- Town Centers
- Civic Corridors
- Neighborhood Centers
- Station Areas
- Greenways and Habitat Corridors
- Employment Districts
- Pattern Areas – Inner, East, West, River



# Centers and Corridors Typology

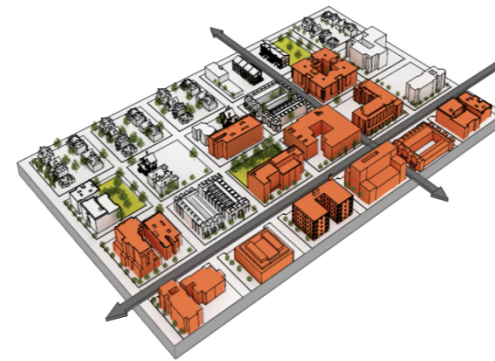


## NEIGHBORHOOD CENTER





<b>HOUSING</b>	3,500 units
<b>JOBS</b>	Primarily retail/ service
<b>BUILDING SCALE</b>	Up to 4 stories

## TOWN CENTER

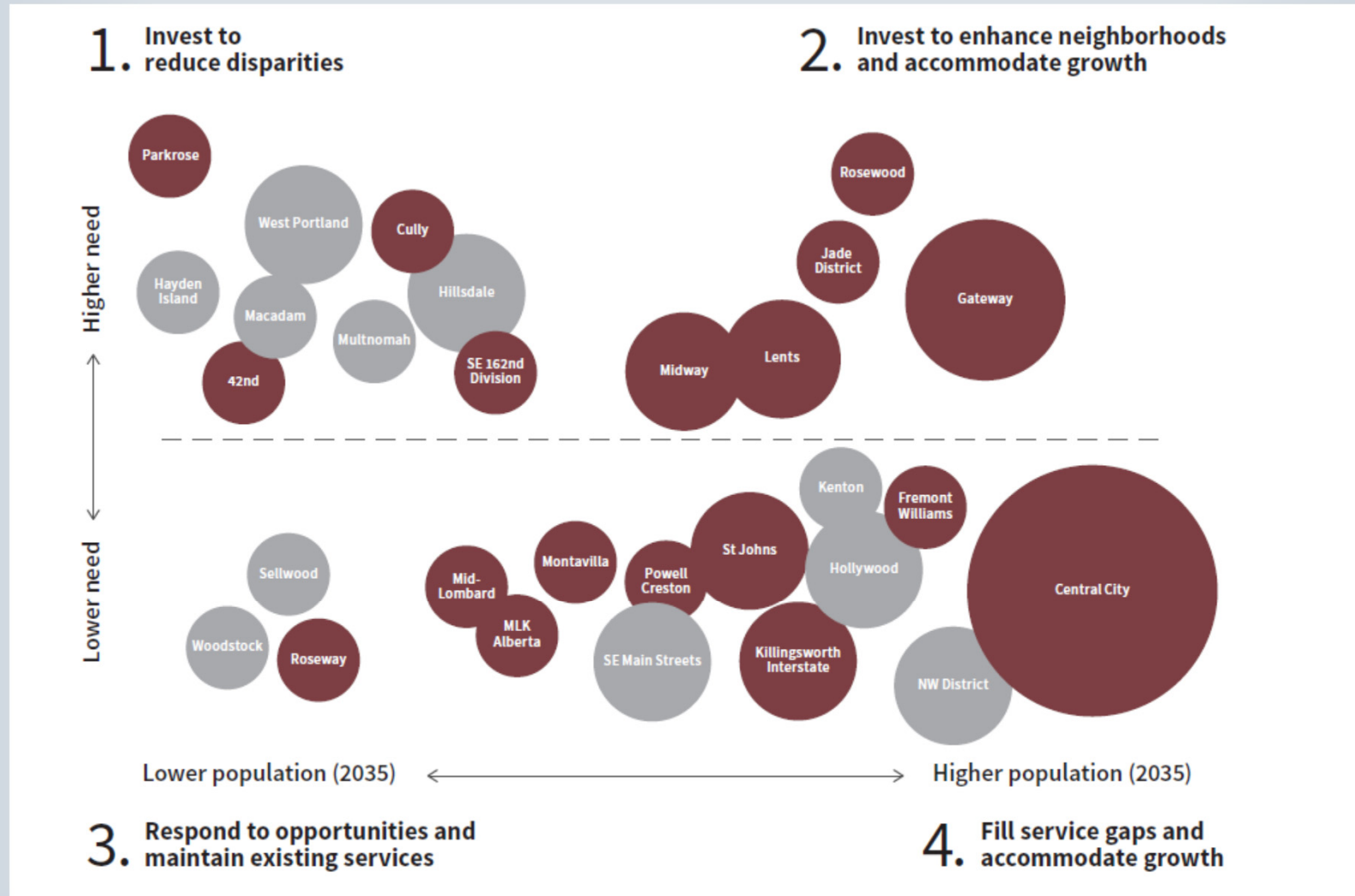


<b>HOUSING</b>	7,000 units
<b>JOBS</b>	Diverse employment/ institutions
<b>BUILDING SCALE</b>	Up to 5-7 stories

 Corridor  
 New Development



# Investment Strategy



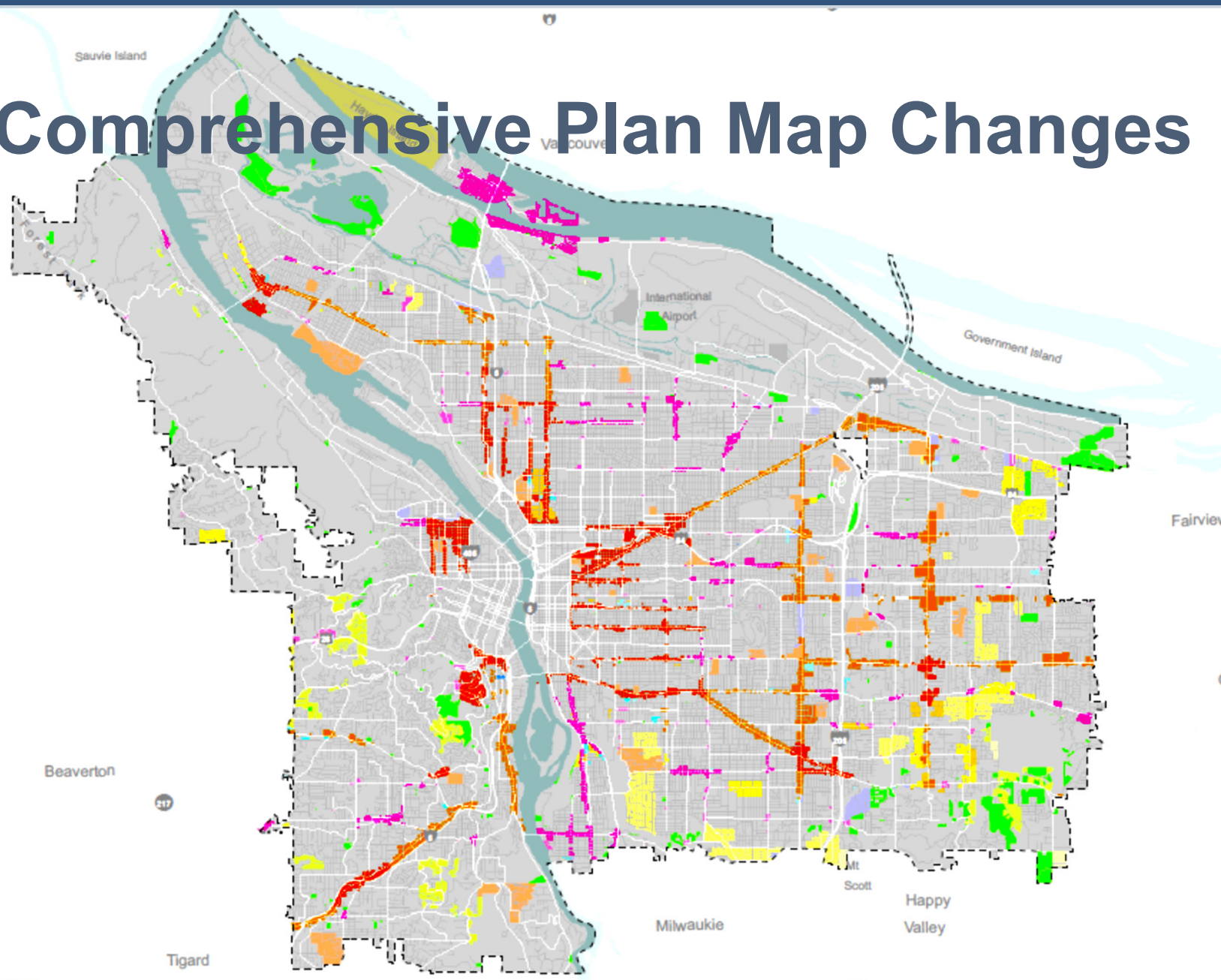


# Periodic Review

- Task 1- Community Involvement Plan (acknowledged 2010)
- Task 2 – Inventory and Analysis (acknowledged 2014)
- Task 3 – Consideration of Alternatives
- Task 4 – Policy Choices ← we are here now (The Plan! – Goals and Policies, Map, Projects)
- Task 5 – Implementation (coming in 2015)



# Comprehensive Plan Map Changes

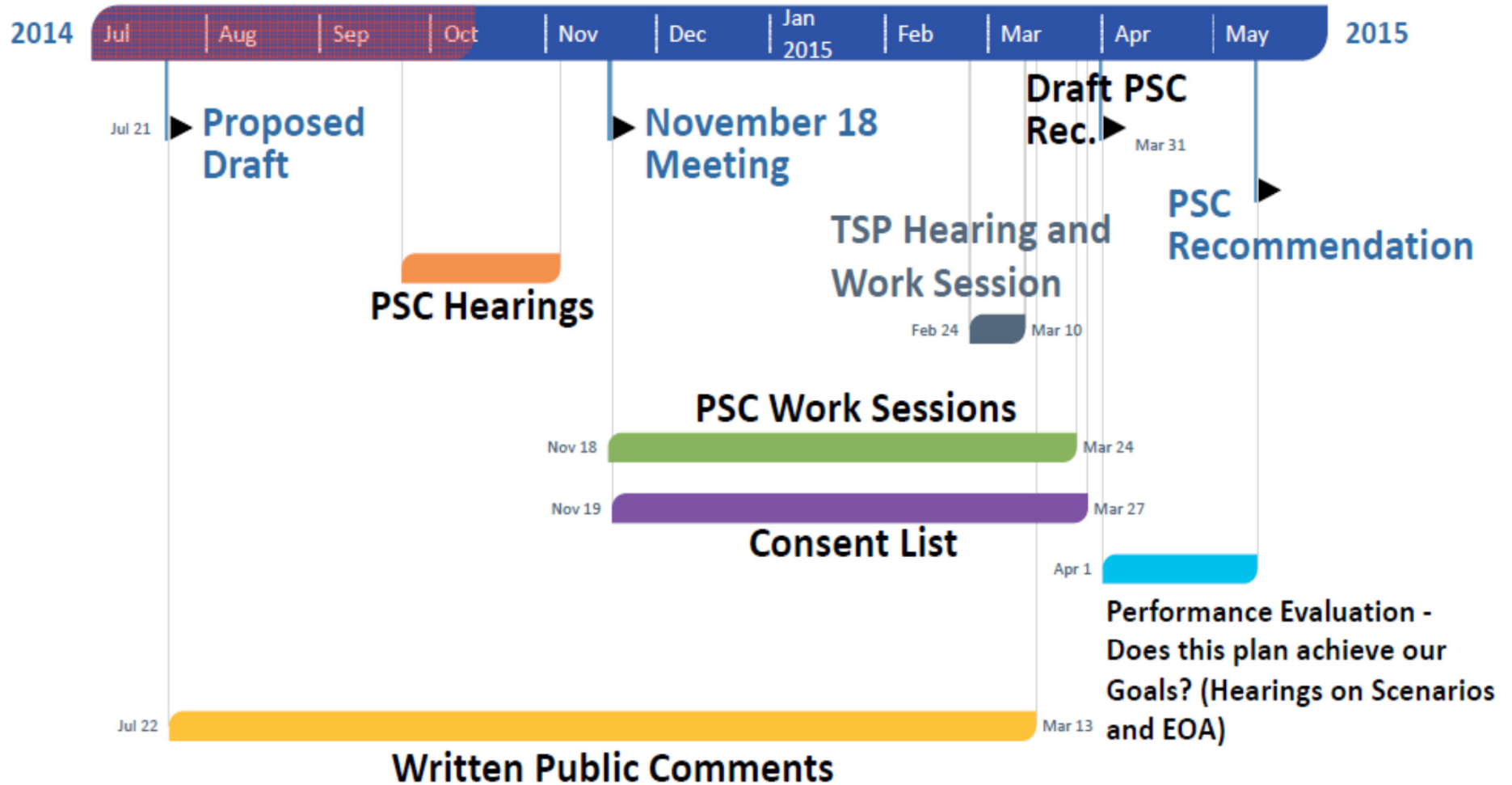


# Work Sessions

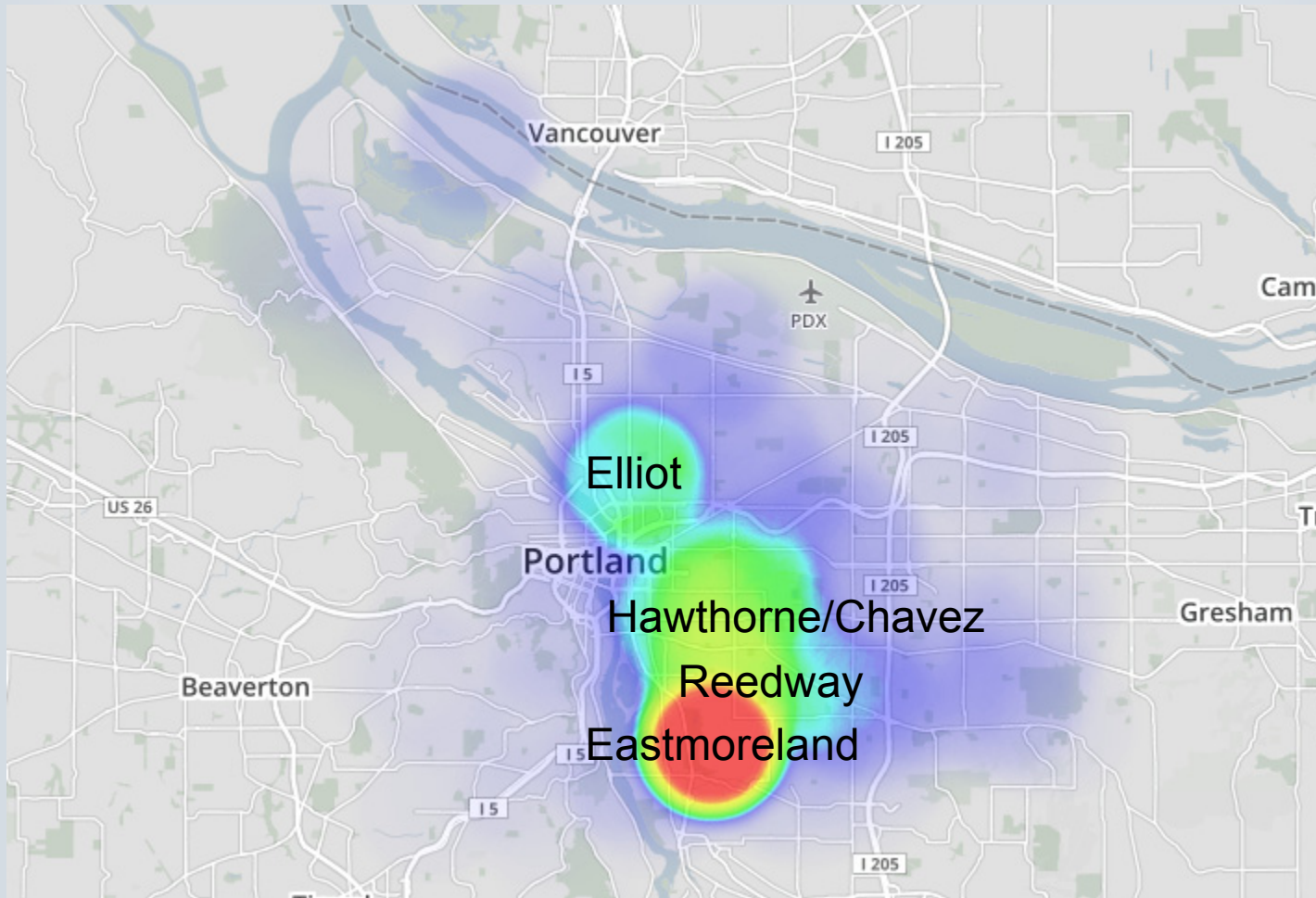
- November 18, 2014
  1. CIC Report
  2. Staff Recommendations Memo
  3. Other City Bureau Observations
- More Work Sessions in January – March
- Additional TSP Hearing in February
- Performance Evaluation – Does the plan meet our goals? Employment Opportunities Analysis (EOA) and Growth Scenario Addendum



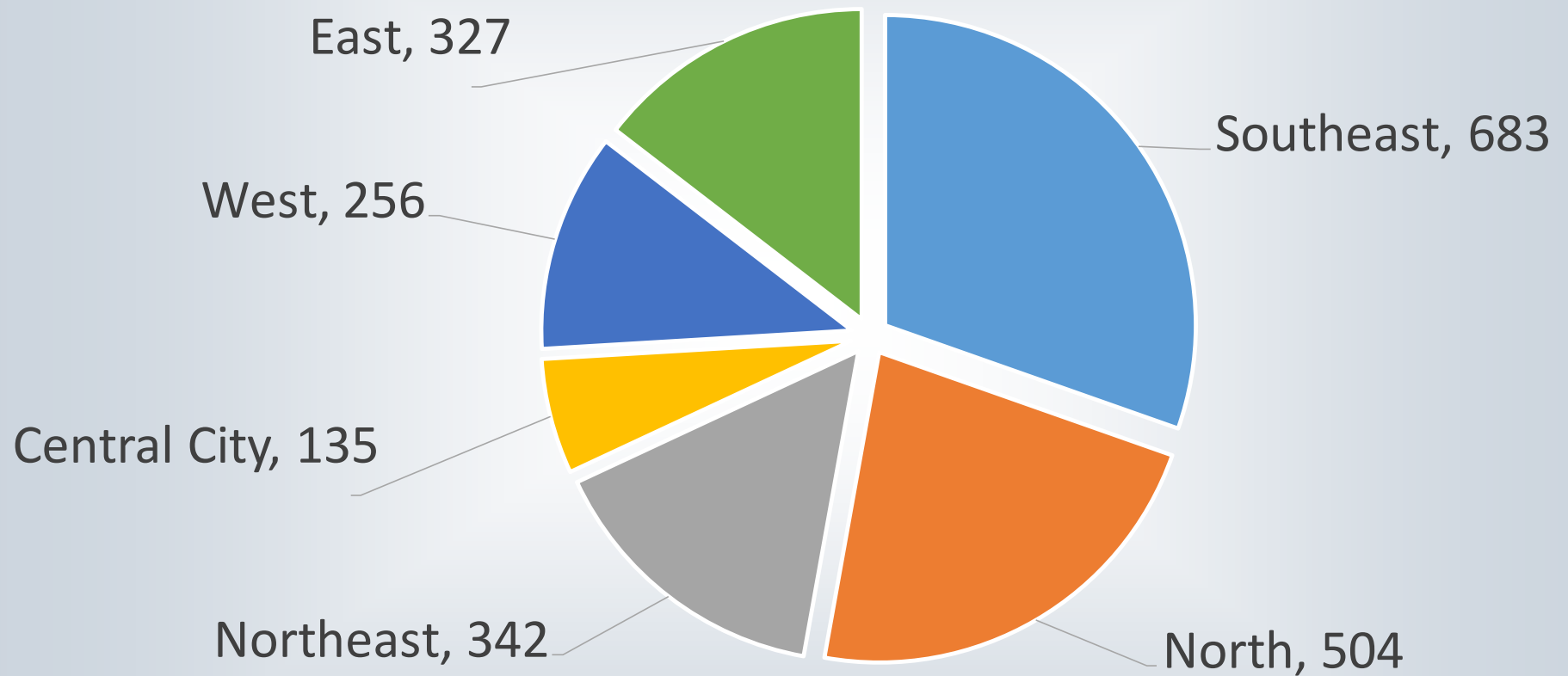
# PSC Comprehensive Plan Sequence



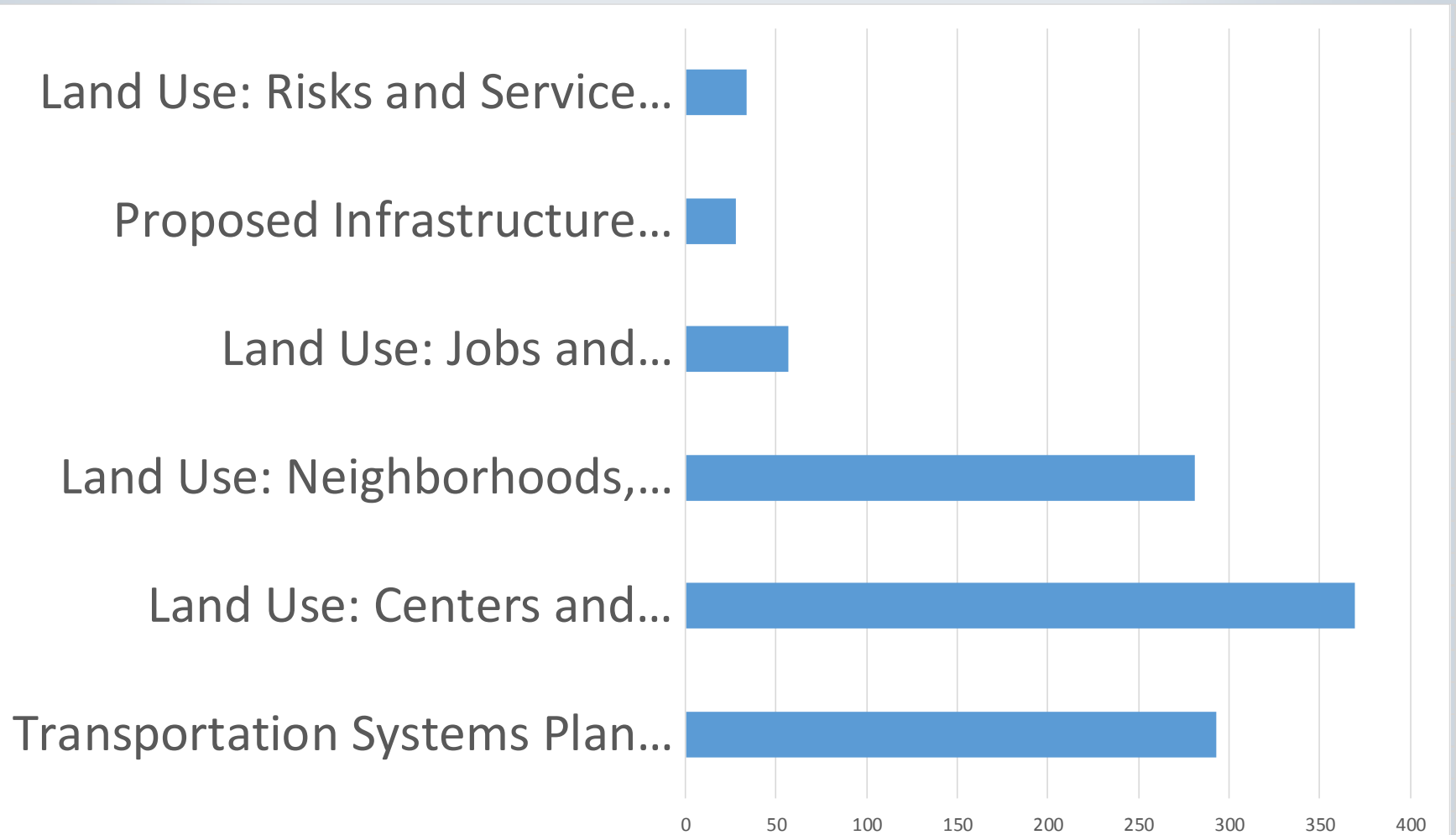
# Online Map Comments



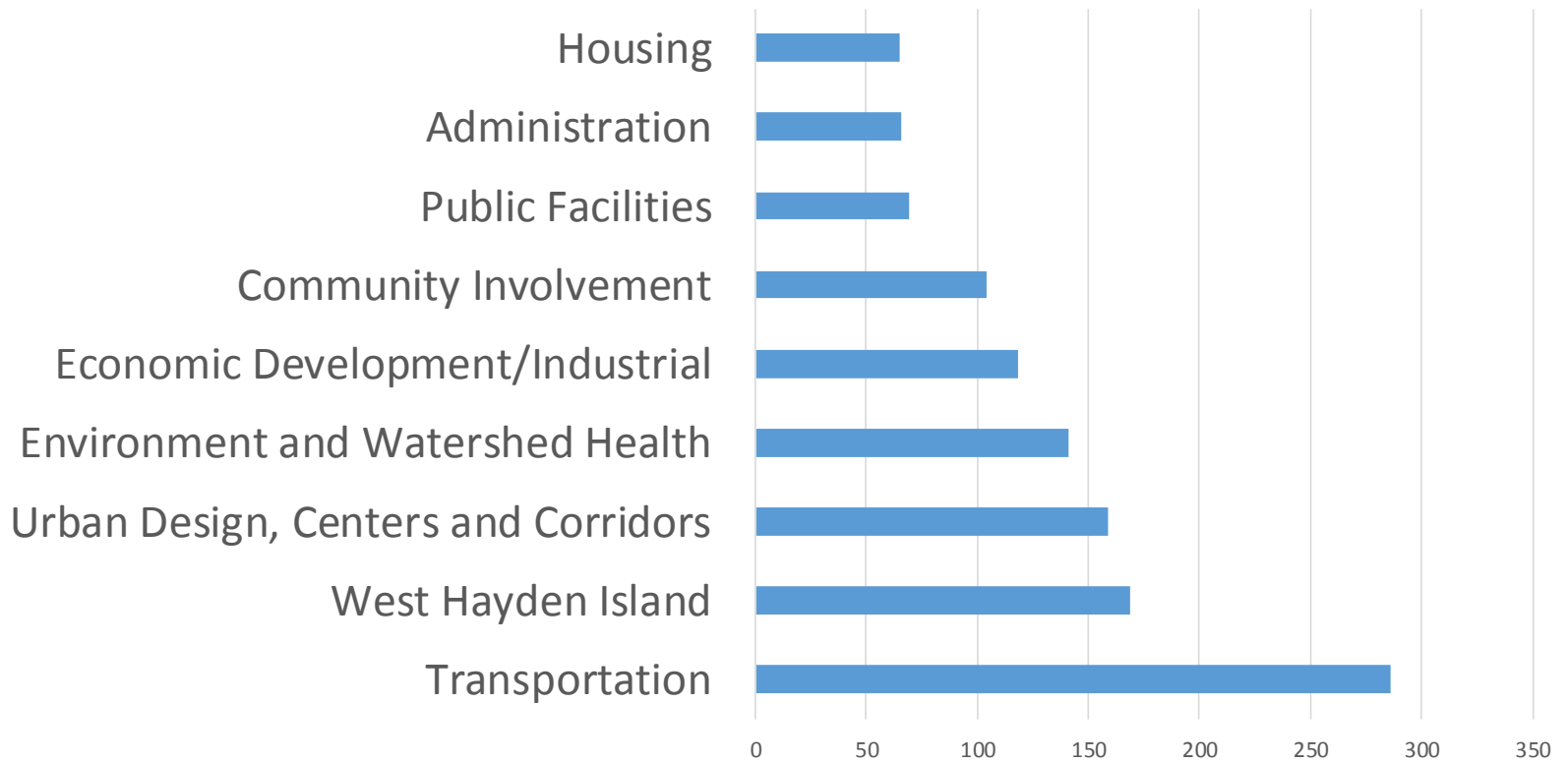
# Online Map Comments



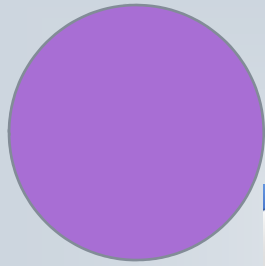
# Online Map Comments



# Policy Comments







# The Map App (Comments)

**The Draft Comprehensive Plan**  
*A plan for Portland*

**Land Use**

- Combined proposed changes  
All the proposed changes, aligning the Comprehensive Plan Map with draft goals and policies and planned infrastructure investments. Proposed changes are sorted by theme in the maps below.
- 1 Centers and Corridors
- 2 Jobs
- 3 Risks and Service Gaps
- 4 Neighborhoods, Parks and Open Space
- The Comprehensive Plan Map

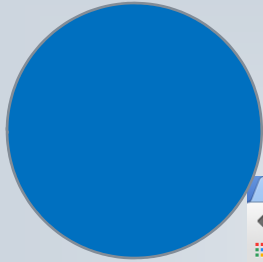
**Transportation**      **Infrastructure**

What's up near you?

Portland

Powered by **esri**





# The Map App (Explorer)

The screenshot shows a web browser window with the URL [www.portlandmaps.com/bps/MapAppExplorer/](http://www.portlandmaps.com/bps/MapAppExplorer/). The browser tabs include GIS ar, Eastsi, trimet, People, 2035, Get In, Two M, Chart, Mixed, Event, and Map A. The page title is "2035 Comprehensive Plan Map App Explorer" with a sub-label "Proposed Draft Map App". Social media icons for Facebook, Twitter, and LinkedIn are visible.

On the left side, there are three toggle controls:

- Relative Earthquake...** (OFF): A text box explaining that the map shows relative earthquake hazard based on Oregon Department of Geology and Mineral Industries data. It notes that hazard considerations are addressed in residential and commercial building codes and that safety issues in construction are determined based on site-specific conditions and geologic studies.
- Vulnerable Populati...** (ON): A text box explaining that census tracts designated as vulnerable have higher-than-average populations with characteristics that make resisting displacement more difficult, such as being renters, belonging to communities of color, lacking college degrees, and having lower incomes. It states that shades of color correspond to how many of these factors are present in a given census tract.
- Watershed Health** (OFF): A text box explaining that Development Opportunity Areas identify places that have, in general, the ability to...

At the bottom left of the interface are navigation icons for MAPS, LEGEND, FAQs, and CONTACT. The map itself shows the Portland area with various colored overlays and red dashed circles highlighting specific locations. The Esri logo is in the bottom right corner of the map area.



# Your input matters!

- Through the Map App:  
[www.portlandoregon.gov/bps/mapapp](http://www.portlandoregon.gov/bps/mapapp)  
(the maps and projects)
- By email: [psc@portlandoregon.gov](mailto:psc@portlandoregon.gov) with  
“Comprehensive Plan Testimony” in the subject  
line
- By mail: Send a letter to the PSC, 1900 SW 4th  
Avenue, Portland, OR 97201-5380



# Questions?

- Website:  
[www.portlandoregon.gov/bps/pdxcompplan](http://www.portlandoregon.gov/bps/pdxcompplan)

- Help Line:

