



2035 Comprehensive Plan *Public Hearings*

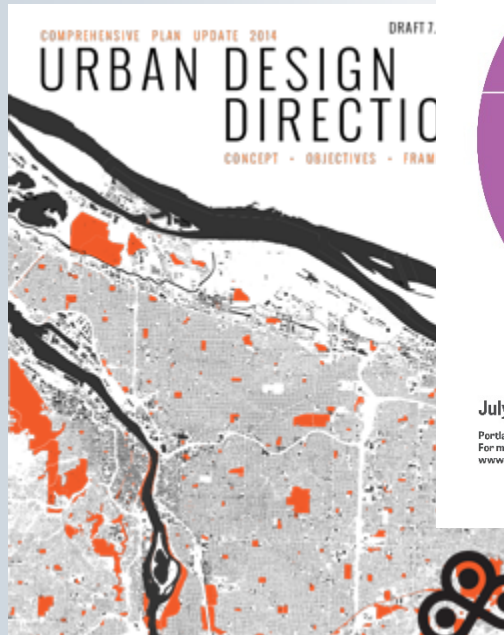
October 28, 2014



Bureau of Planning and Sustainability
Innovation. Collaboration. Practical Solutions.



Plan Elements



... COMPREHENSIVE PLAN UPDATE ...

2035 Comprehensive Plan

Proposed Draft

What's Inside?

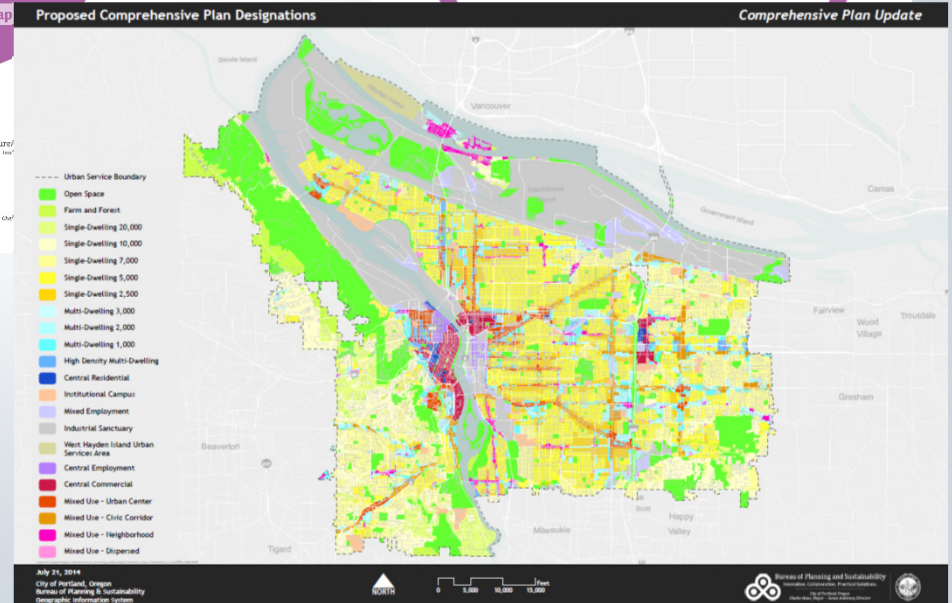
- Introduction
- About the Plan
- Goals and Policies
- List of Significant Projects
- Comprehensive Plan Map
- Glossary

July 2014
 Portland's Comprehensive Plan Update
 For more information, visit:
www.portlandoregon.gov/bps/pdxcompplan

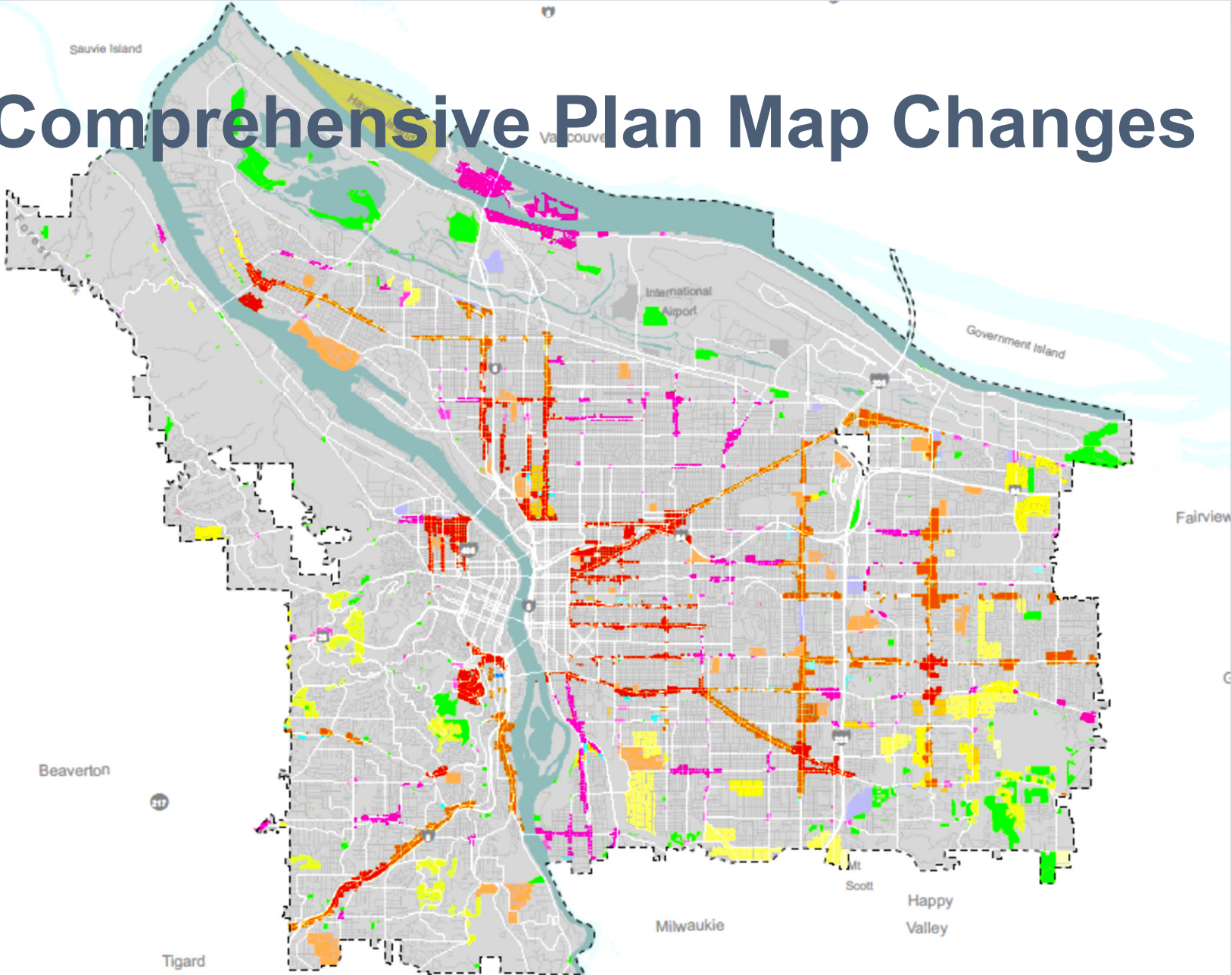
... COMPREHENSIVE PLAN UPDATE ...

Citywide Systems Plan

Proposed Draft



Comprehensive Plan Map Changes



Public Hearing Sequence

- September 23, 2014, 5PM
- October 14, 2014, 5PM
- **October 28, 2014, 5PM**

(Portland Community College SE Campus, Community Hall: 2305 SE 82nd Ave)

- November 4, 2014, 4PM

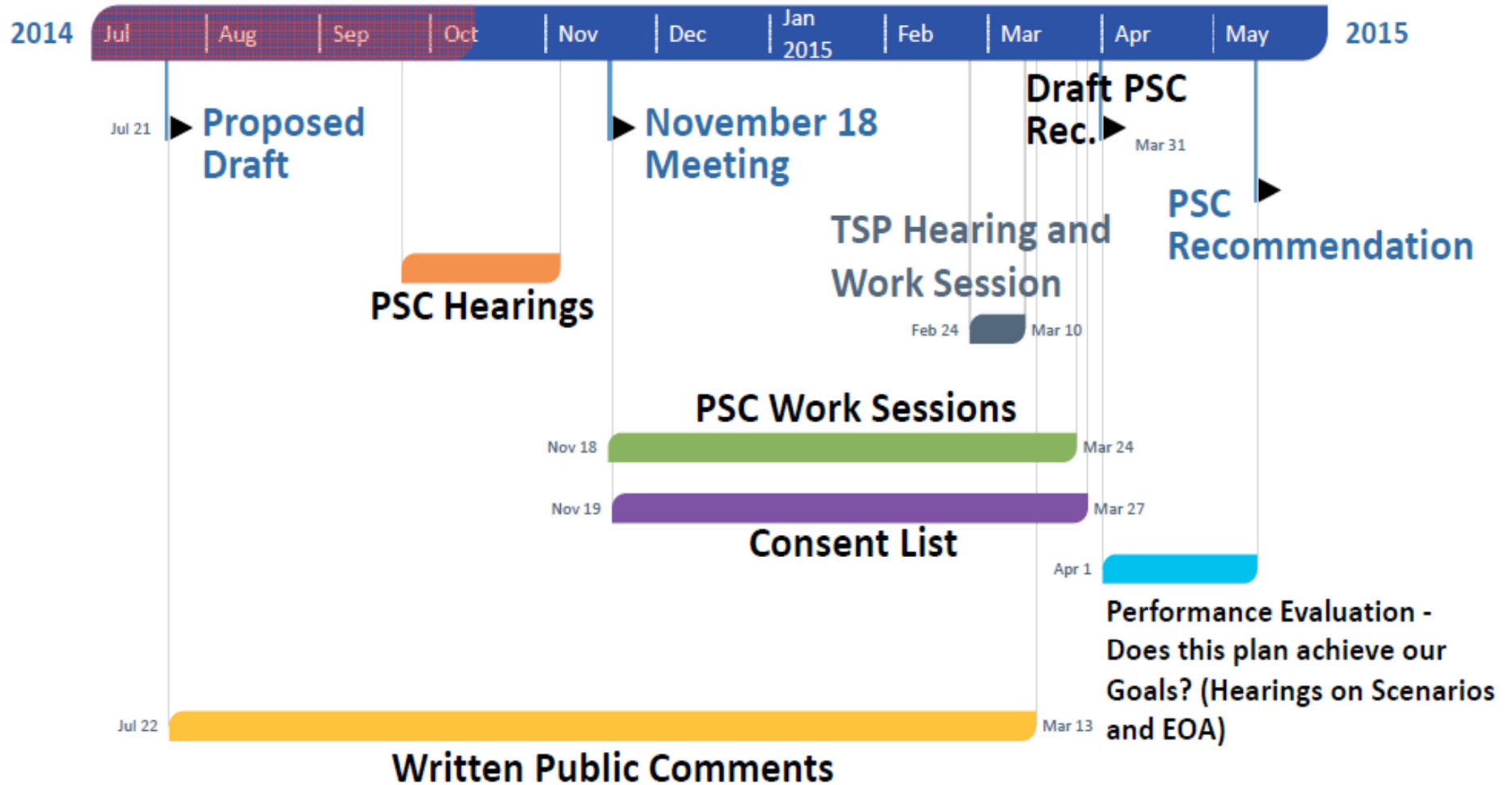


Work Sessions

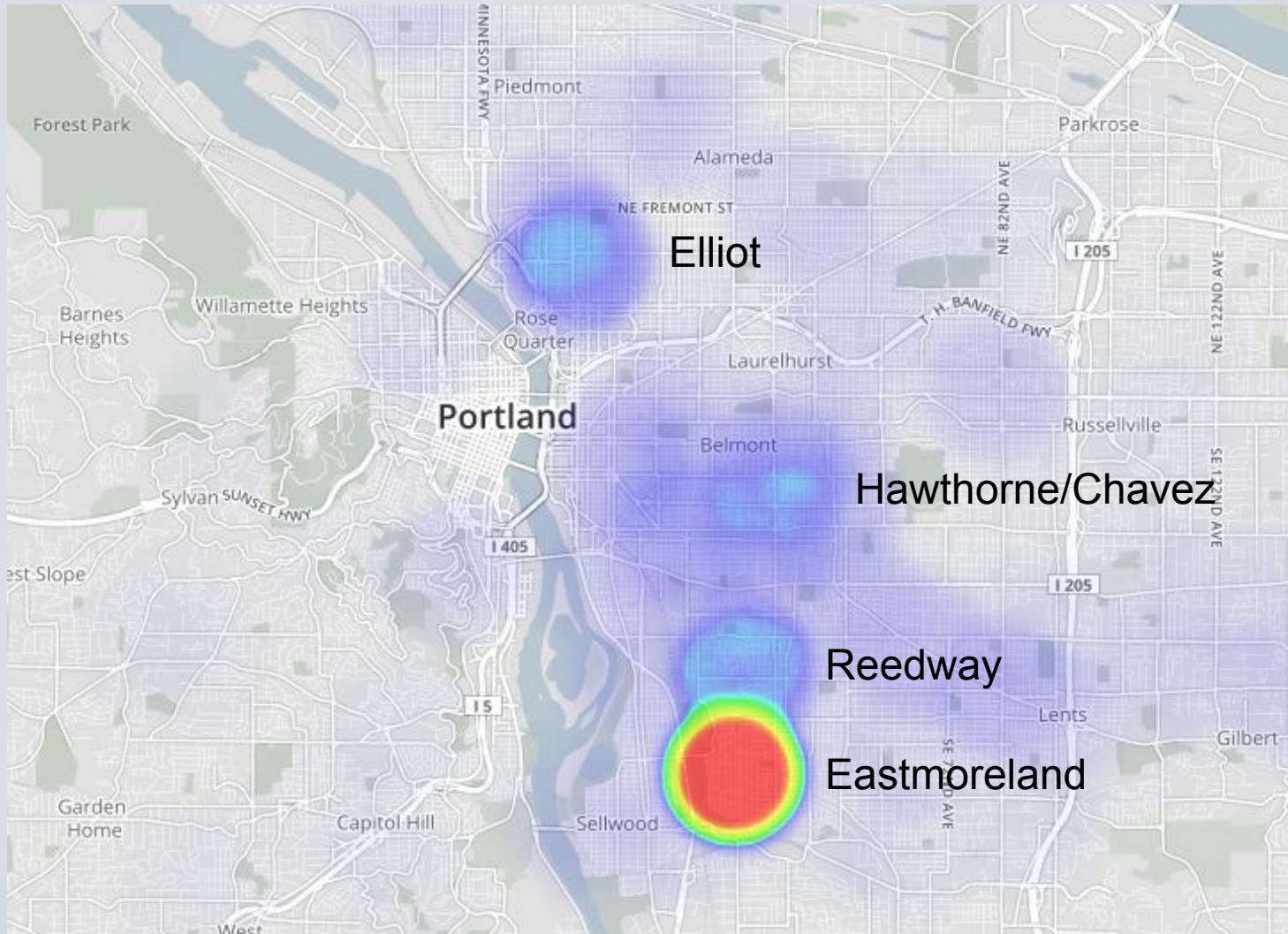
- November 18, 2014
 1. CIC Report
 2. Staff Recommendations Memo
 3. Other City Bureau Observations
- More Work Sessions in January – March
- Additional TSP Hearing in February
- Performance Evaluation – Does the plan meet our goals? Employment Opportunities Analysis (EOA) and Growth Scenario Addendum



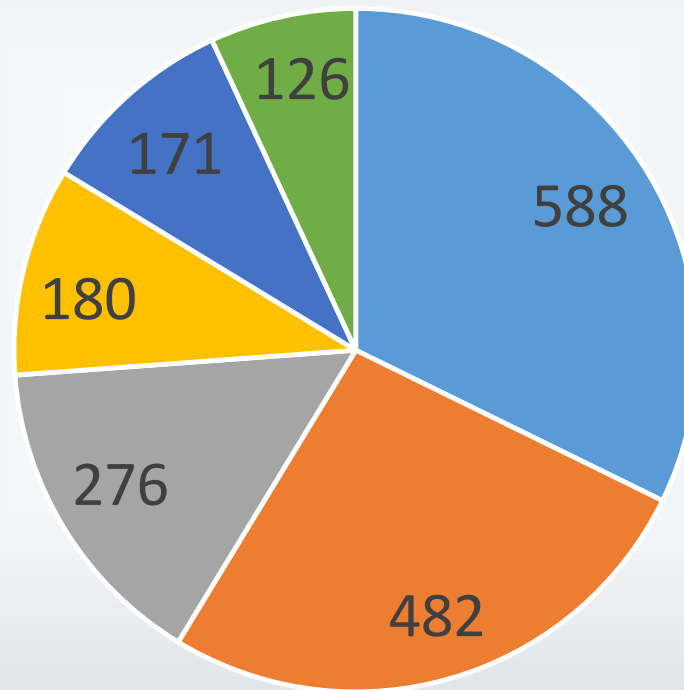
PSC Comprehensive Plan Sequence



Online Map Comments



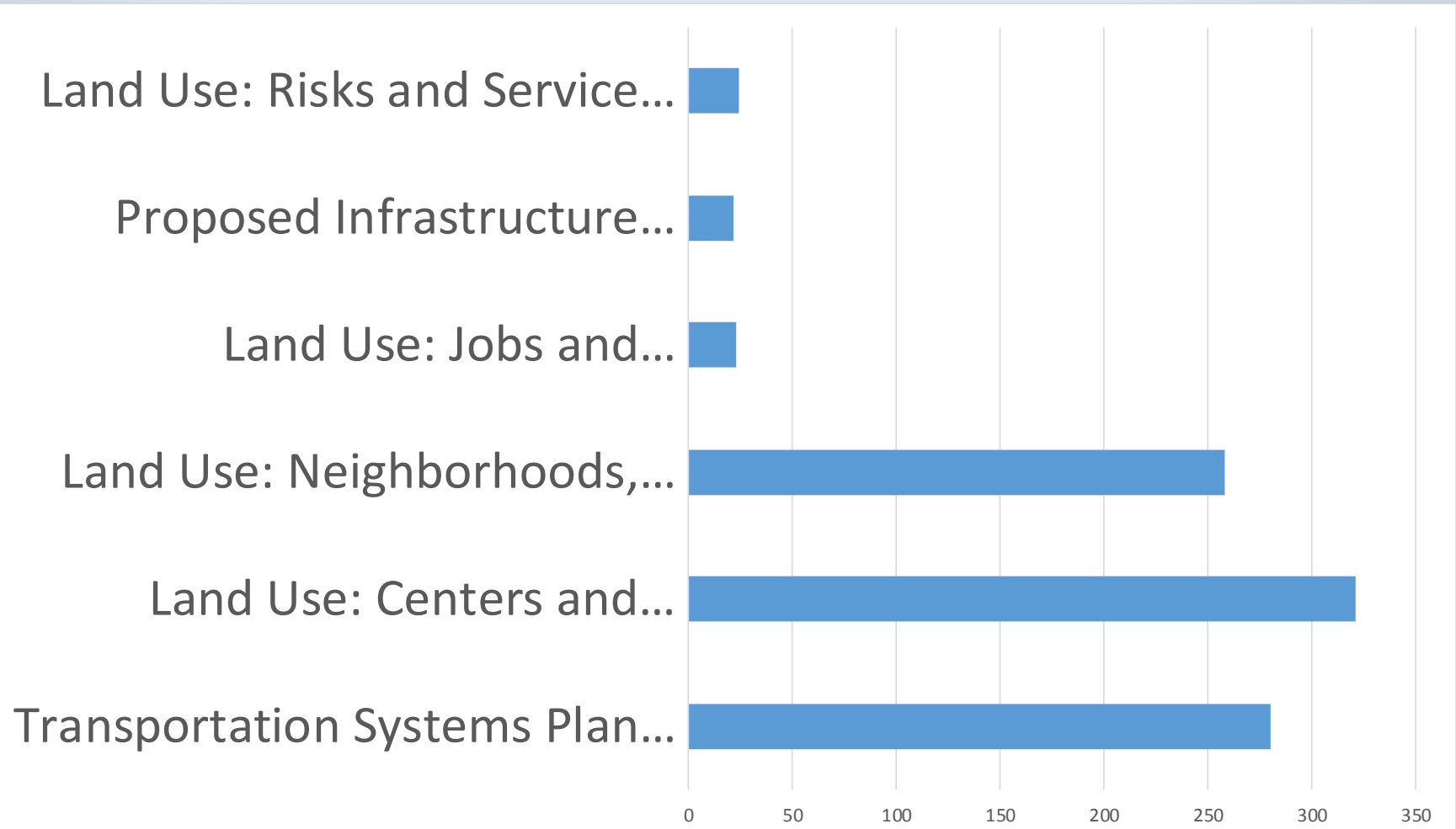
Online Map Comments



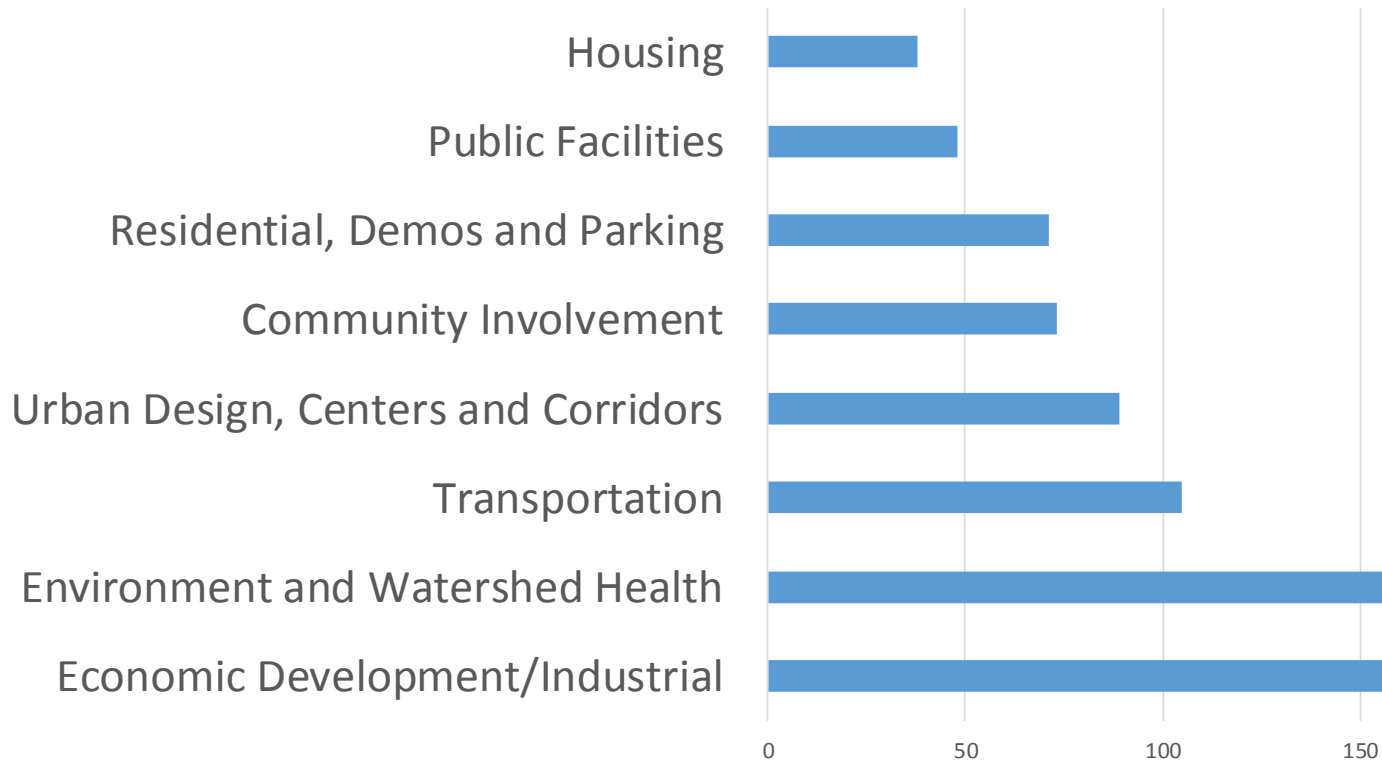
■ Southeast ■ North ■ Northeast ■ Central City ■ West ■ East

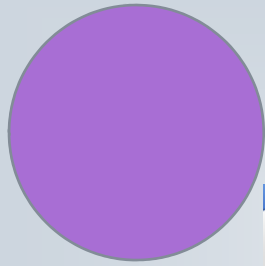


Online Map Comments



Policy Comments





The Map App (Comments)

The Draft Comprehensive Plan
A plan for Portland

Land Use

Combined proposed changes

All the proposed changes, aligning the Comprehensive Plan Map with draft goals and policies and planned infrastructure investments. Proposed changes are sorted by theme in the maps below.

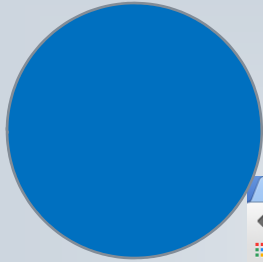
- 1 Centers and Corridors
- 2 Jobs
- 3 Risks and Service Gaps
- 4 Neighborhoods, Parks and Open Space

The Comprehensive Plan Map

MAPS INFO LEGEND FAQs CONTACT

Powered by **esri**





The Map App (Explorer)

The screenshot shows a web browser window with the URL www.portlandmaps.com/bps/MapAppExplorer/. The browser tabs include GIS an, Eastsi, trimet, People, 2035, Get In, Two M, Chart, Mixed, Event, and Map A. The page title is "2035 Comprehensive Plan Map App Explorer" with a sub-label "Proposed Draft Map App".

On the left side, there are three interactive sections:

- Relative Earthquake...** (OFF): A text block explaining that the map shows relative earthquake hazard based on Oregon Interpretive Map Series. It notes that earthquake hazard considerations are addressed in Portland through life safety and seismic considerations in residential and commercial building codes. It also states that earthquake safety issues in construction are determined based on site-specific conditions and geologic studies, as opposed to the location of any property within the ranked hazard areas of this map.
- Vulnerable Populati...** (ON): A text block explaining that census tracts designated as vulnerable have higher-than-average populations with characteristics that make resisting displacement more difficult. These characteristics include being renters rather than homeowners, belonging to communities of color, lacking college degrees, and having lower incomes. It notes that the shades of color correspond with how many of these factors are present in a given census tract.
- Watershed Health** (OFF): A text block explaining that Development Opportunity Areas identify places that have, in general, the ability to...

The main map area displays a geographic map of the Portland region, including areas like Vancouver, Beaverton, and various neighborhoods within Portland. The map is overlaid with several data layers: a blue shaded area representing earthquake hazard, a red and orange shaded area representing vulnerable populations, and a network of red lines representing watershed health. A red circle highlights the central Portland area. The map includes standard navigation controls (zoom in, zoom out, home) and a legend at the bottom left. The Esri logo is visible in the bottom right corner of the map area.



Your input matters!

- Through the Map App:
www.portlandoregon.gov/bps/mapapp
(the maps and projects)
- By email: psc@portlandoregon.gov with
“Comprehensive Plan Testimony” in the subject
line
- By mail: Send a letter to the PSC, 1900 SW 4th
Avenue, Portland, OR 97201-5380



Questions?

- Website:
www.portlandoregon.gov/bps/pdxcompplan

- Help Line:

