

SW 45TH & CALIFORNIA LID LID Resolution of Intent Hearing

SW 46TH & FLORIDA STREET VACATION Street Vacation Amendment Hearing

September 17, 2014 - Agendas Item #958 and #959



WE KEEP PORTLAND *MOVING.*

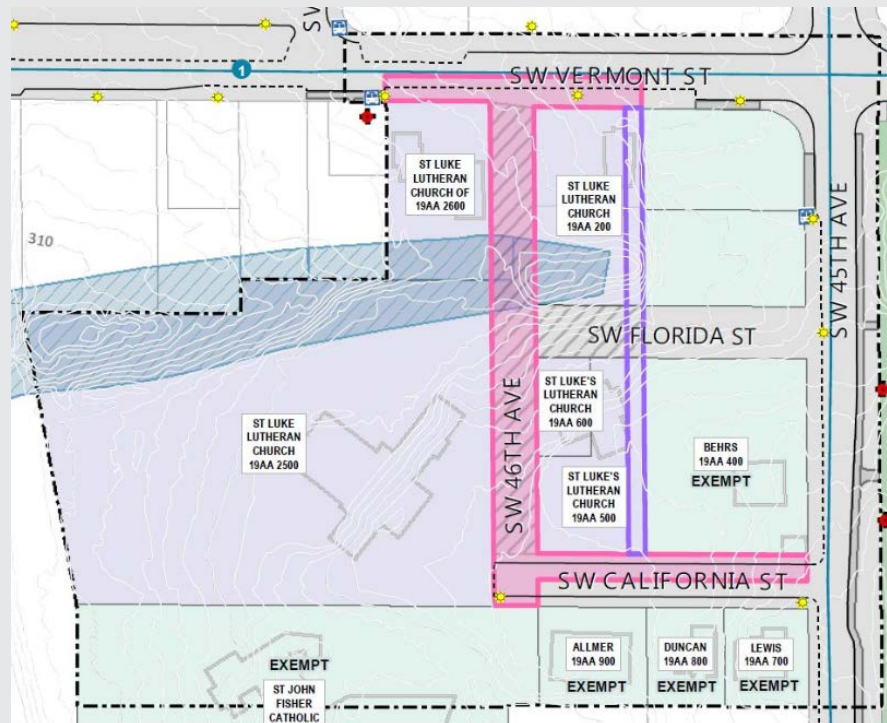


Presented by: Andrew Aebi, LID Administrator and Lance Lindahl, Right-of-Way Agent

Planned Improvements - Original SW 46th & Florida Street Vacation



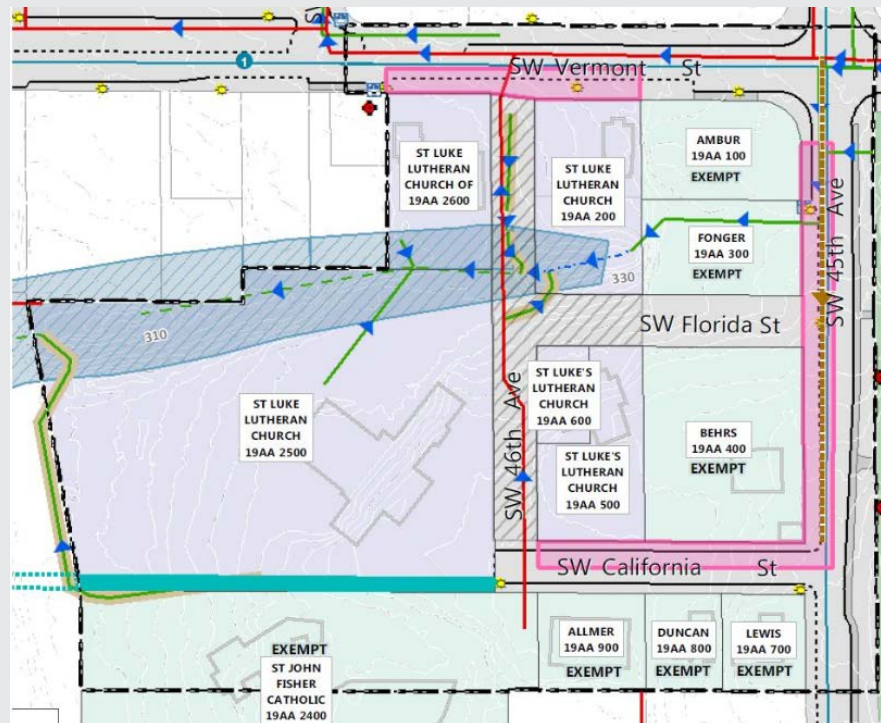
*North-south pedestrian connection on SW 46th Ave.;
either in former ROW (pink) or alignment to east (purple)*



Planned Improvements - Amended SW 46th & Florida Street Vacation



*North-south pedestrian connection on SW 45th Avenue;
in existing ROW (pink); new east-west ROW dedication (teal)*



Proposed LID Scope and Funding



*100% petition support for LID;
all funding from St. Luke; other abutting properties
getting frontage improvements at zero cost*

SW 45th Avenue Proposed Improvements

- Bike lane, sidewalk & stormwater funded by St. Luke
- Optional sanitary sewer extension

SW California Street Proposed Improvements

- Cul-de-sac, sidewalk & stormwater funded by St. Luke

SW Vermont Street Proposed Improvements

- Sidewalk & stormwater funded by St. Luke

This map shows the SW Multnomah Blvd area, highlighting planned sidewalk improvements and pedestrian easements. The map includes a legend with the following categories:

- Planned Improvements:**
 - SW 45th Ave & California St LD area
 - Planned sidewalk improvements (indicated by pink dashed lines)
 - Planned 15' Pedestrian Easement (indicated by blue dotted lines)
- Street Surfaces:**
 - Unpaved (red line)
 - Paved without curb (yellow line)
 - Paved with curb (green line)
- Rivers and Streams:**
 - Open Channel (blue wavy line)
 - Water Body (light blue area)
 - Stormwater Pipe or Culvert (dashed blue line)
- Environmental:**
 - Protection Zone (light blue shaded area)
 - Conservation Zone (light green shaded area)
- Other:**
 - Neighborhood Boundary (purple outline)
 - Hard Surface Trails (Metro Trails Inventory) (green line)

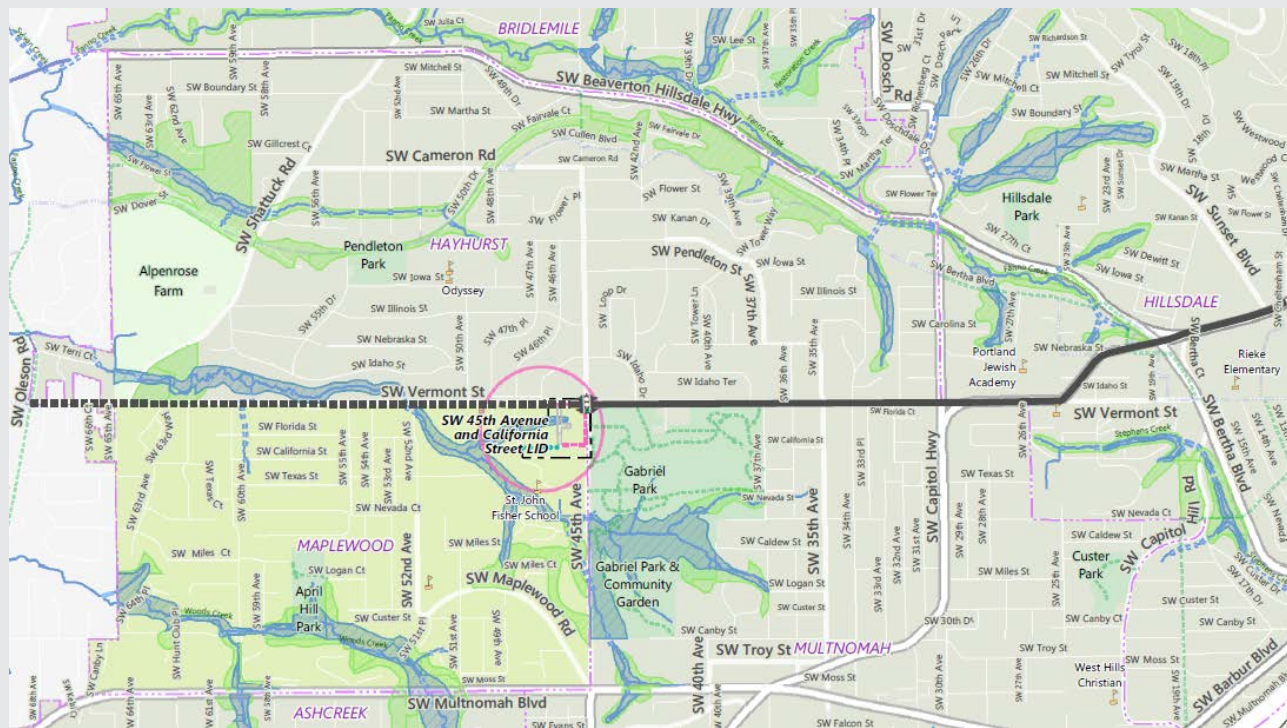
The map also shows various landmarks and features, including:

- Streets:** SW 45th Ave, SW 46th Ave, SW 47th Ave, SW 48th Ave, SW 49th Ave, SW 50th Ave, SW 51st Ave, SW 52nd Ave, SW 53rd Ave, SW 54th Ave, SW 55th Ave, SW 56th Ave, SW 57th Ave, SW 58th Ave, SW 59th Ave, SW 60th Ave, SW 61st Ave, SW 62nd Ave, SW 63rd Ave, SW 64th Ave, SW 65th Ave, SW 66th Ave, SW 67th Ave, SW 68th Ave, SW 69th Ave, SW 70th Ave, SW 71st Ave, SW 72nd Ave, SW 73rd Ave, SW 74th Ave, SW 75th Ave, SW 76th Ave, SW 77th Ave, SW 78th Ave, SW 79th Ave, SW 80th Ave, SW 81st Ave, SW 82nd Ave, SW 83rd Ave, SW 84th Ave, SW 85th Ave, SW 86th Ave, SW 87th Ave, SW 88th Ave, SW 89th Ave, SW 90th Ave, SW 91st Ave, SW 92nd Ave, SW 93rd Ave, SW 94th Ave, SW 95th Ave, SW 96th Ave, SW 97th Ave, SW 98th Ave, SW 99th Ave, SW 100th Ave.
- Parks and Recreation:** April Hill Park, Gabriel Park & Community Garden, St. John Fisher School, West Hills Schools-Montessori and Elementary Programs.
- Landmarks:** Albany Farm, HAYHURST, MAPLEWOOD, ASHCREE, MULTNOMAH.

Extended pedestrian connection from Hillsdale to Maplewood



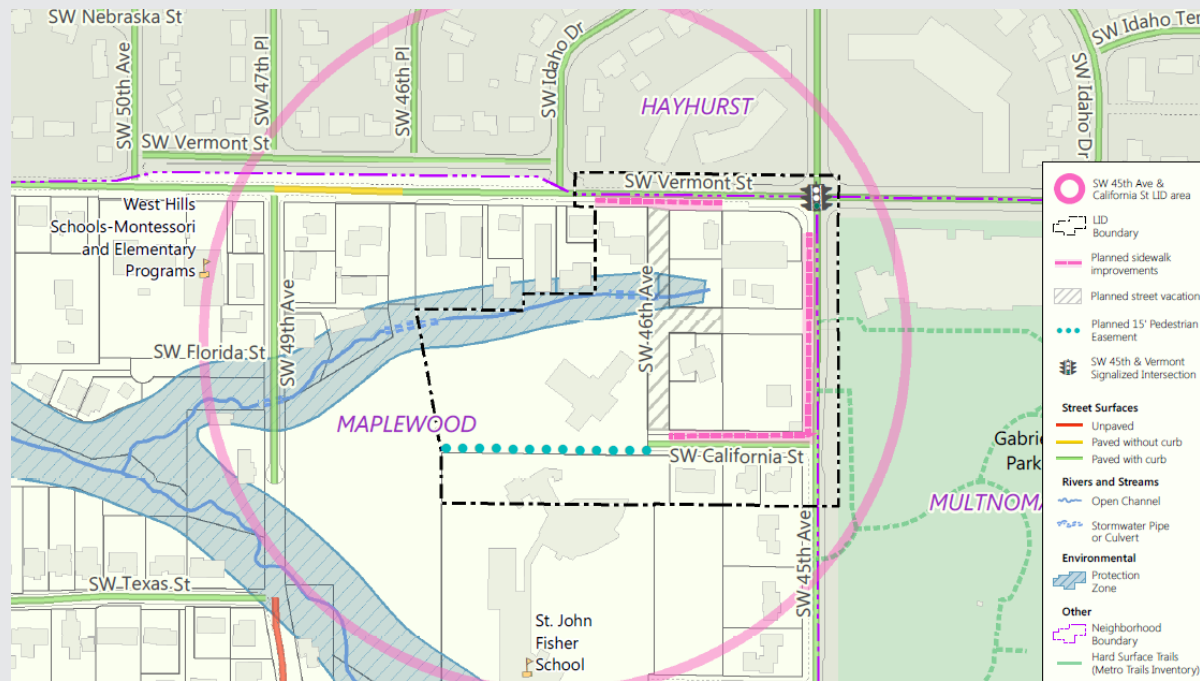
This LID extends sidewalk on at least one side of street from Hillsdale (Capitol & Cheltenham) to west of SW 46th Avenue & Vermont Street



Preferred new pedestrian connections



SW California Street in lieu of SW Florida Street
SW 45th Avenue in lieu of SW 46th Avenue



SW 46th Ave. & Florida St. Intersection (existing)



*Existing conditions looking east on 8/27/14;
no change proposed; area to be vacated*



SW 46th Ave. & California St. Intersection (existing)



*Existing conditions looking west on 8/27/14;
area no longer proposed to be vacated, small cul-de-sac will be built*



SW 46th Ave. & California St. Intersection (proposed)



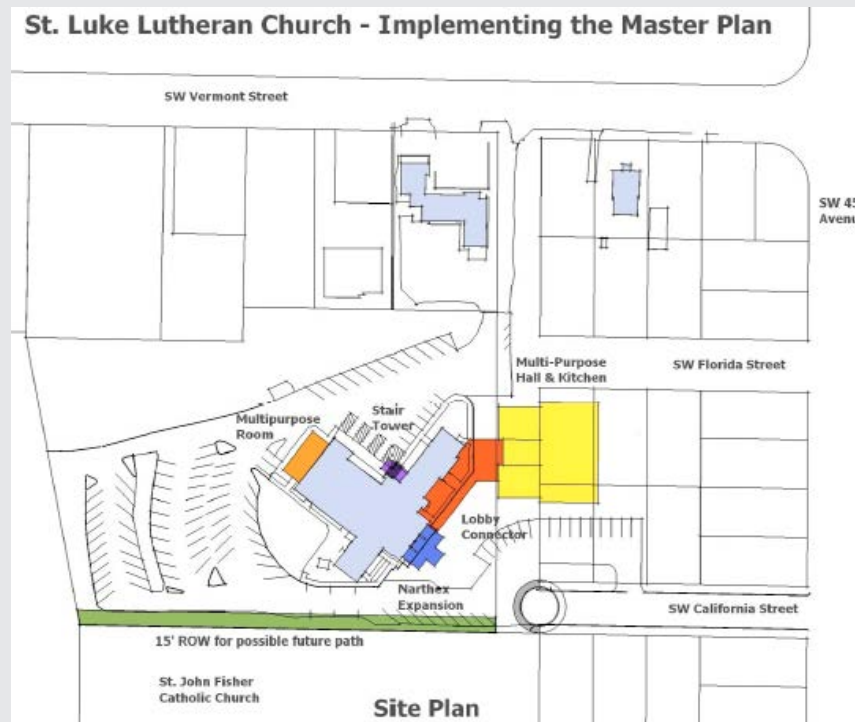
*Future concept looking west as of 9/12/14;
area no longer proposed to be vacated, but cul-de-sac will be built*



St. Luke Master Plan



*Concept as of 9/12/14;
multiphase private construction project;
subject to further refinement and congregational funding*



SW 45th Ave. & California St. Intersection



*Existing conditions looking south on 8/27/14;
no changes proposed*



SW 45th Ave. & California St. Intersection - west shoulder

*Existing conditions looking north on 8/27/14;
Gravel shoulder maintenance and parking
will be replaced with new bike lane and sidewalk*



Street vacation timeline



Second reading of amended street vacation ordinance requested on 10/22/14 instead of 9/24/14 concurrent with LID formation

Street Vacation (SV)

- Staff review began in May 2010
- City Council approval of original SV on 2/29/12
- First reading of amended SV on 9/17/14
- Second reading of amended SV on 10/22/14
- Five (5) weeks instead of one (1) week between first and second readings of amended SV ordinance

LID timeline

*Second reading of amended street vacation ordinance
requested on 10/22/14 instead of 9/24/14
concurrent with LID formation*



Local Improvement District (LID)

- Successfully petitioned in May 2014
- LID Resolution of Intent on 9/17/14
- LID Formation Hearing on 10/15/14
- LID final approval on 10/22/14