



2035 Comprehensive Plan *Public Hearings*

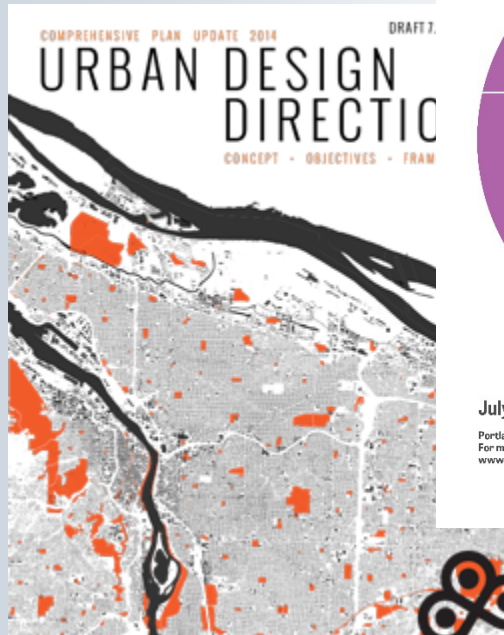
October 14, 2014



Bureau of Planning and Sustainability
Innovation. Collaboration. Practical Solutions.



Plan Elements



... COMPREHENSIVE PLAN UPDATE ...

2035 Comprehensive Plan

Proposed Draft

What's Inside?

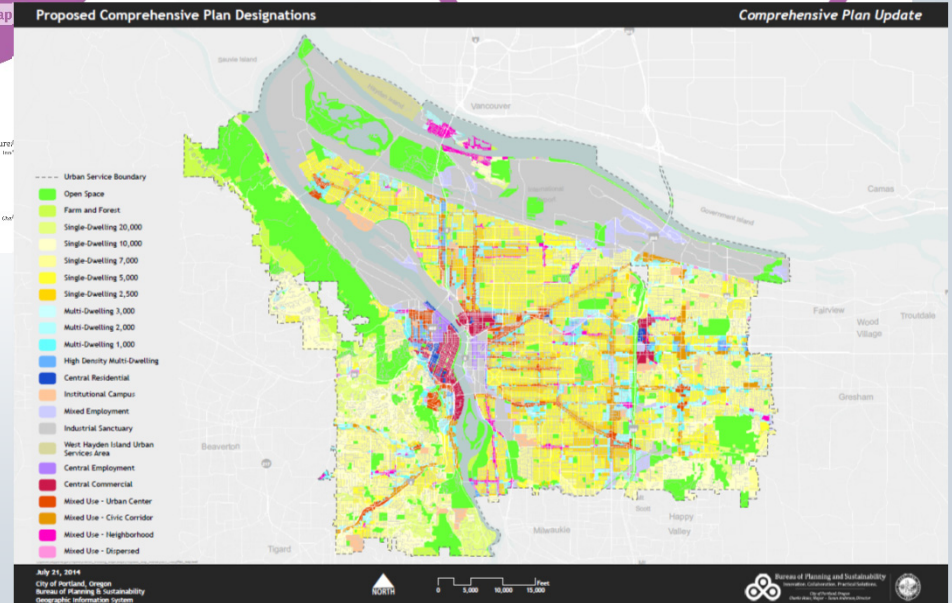
- Introduction
- About the Plan
- Goals and Policies
- List of Significant Projects
- Comprehensive Plan Map
- Glossary

July 2014
 Portland's Comprehensive Plan Update
 For more information, visit:
www.portlandoregon.gov/bps/pdxcompplan

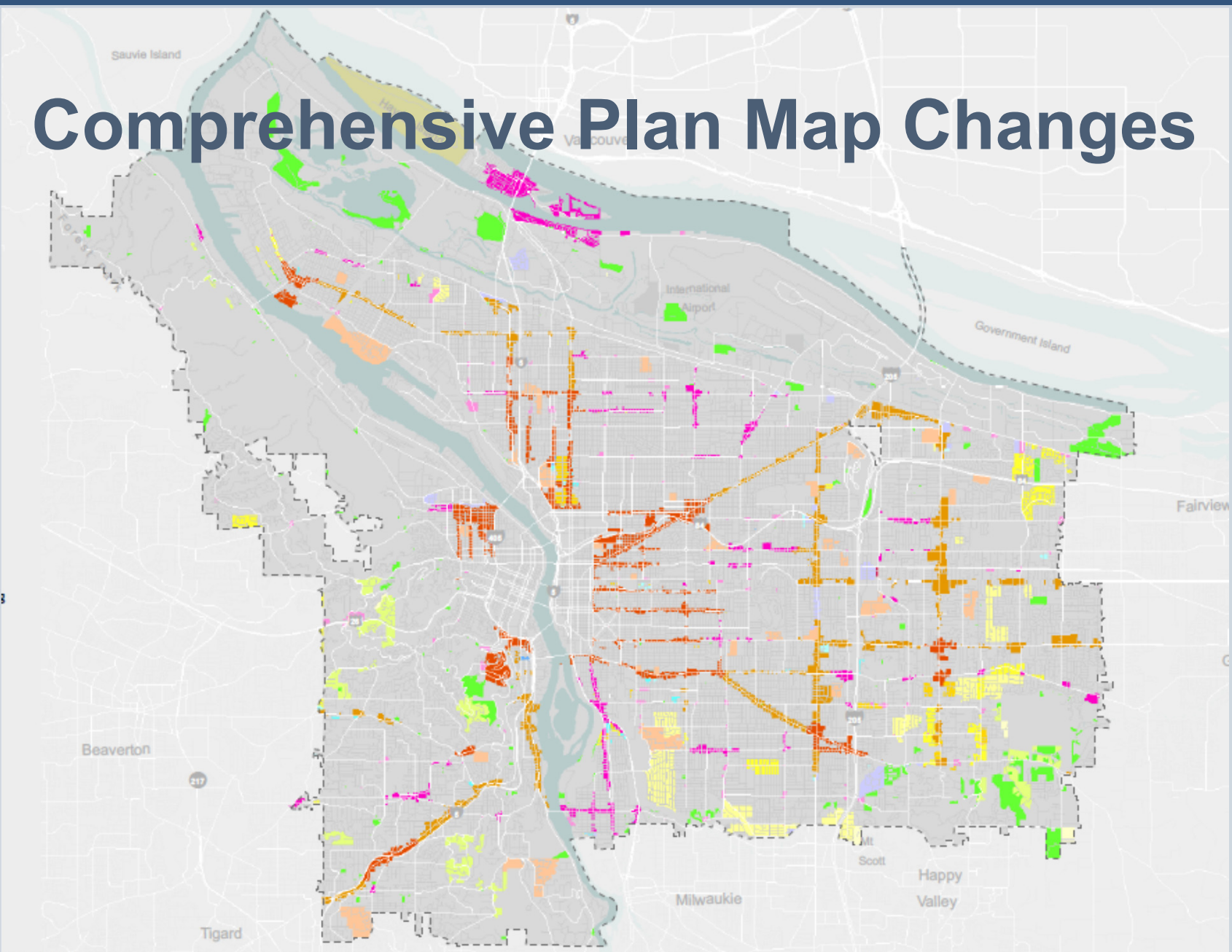
... COMPREHENSIVE PLAN UPDATE ...

Citywide Systems Plan

Proposed Draft



Comprehensive Plan Map Changes



Public Hearing Sequence

- September 23, 2014, 5PM
- **October 14, 2014, 5PM**
(Parkrose High School, 12003 NE Shaver Street, Student Center)
- October 28, 2014, 5PM
(Portland Community College SE Campus, Community Hall: 2305 SE 82nd Ave)
- November 4, 2014, 4PM

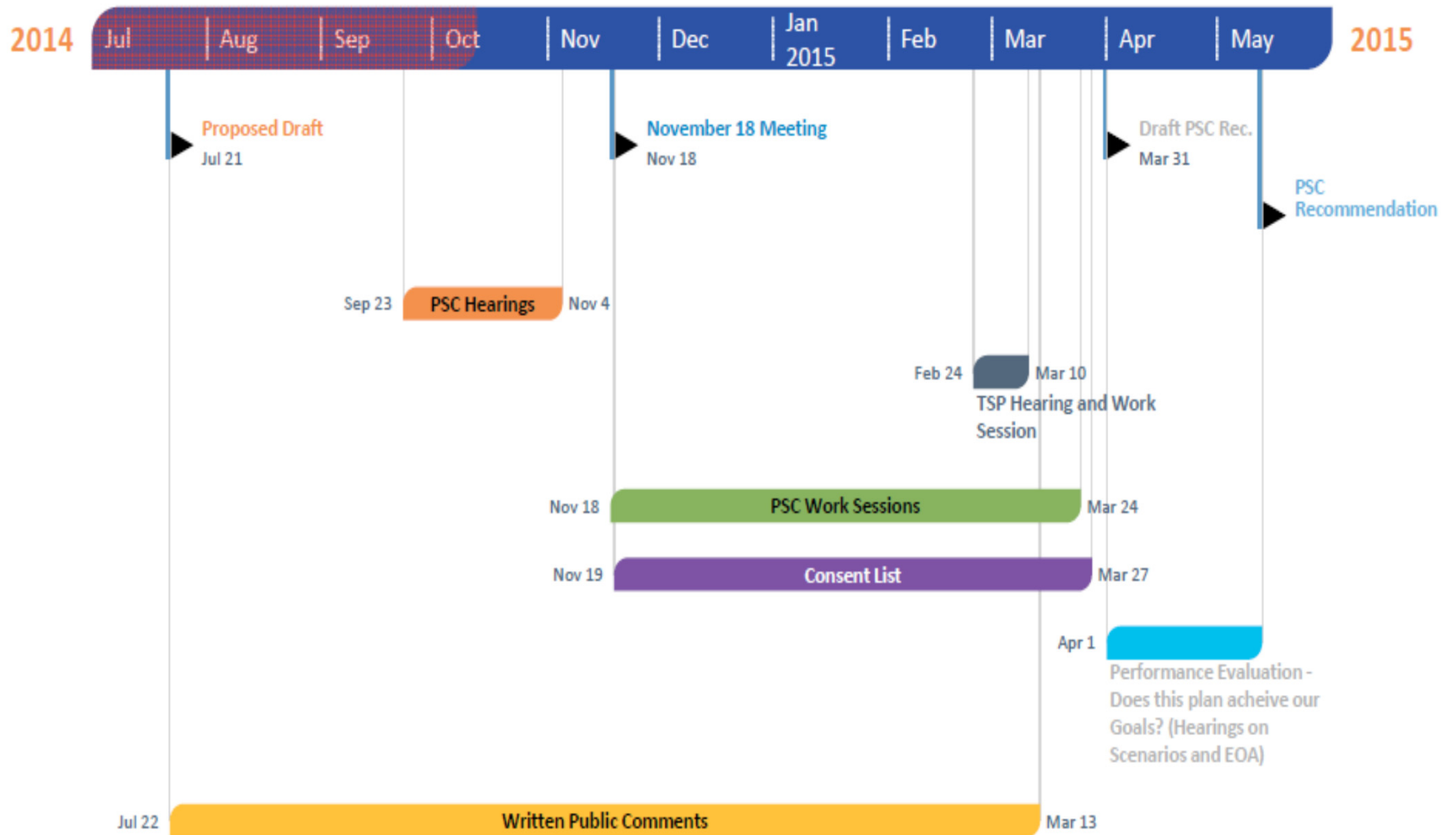


Work Sessions

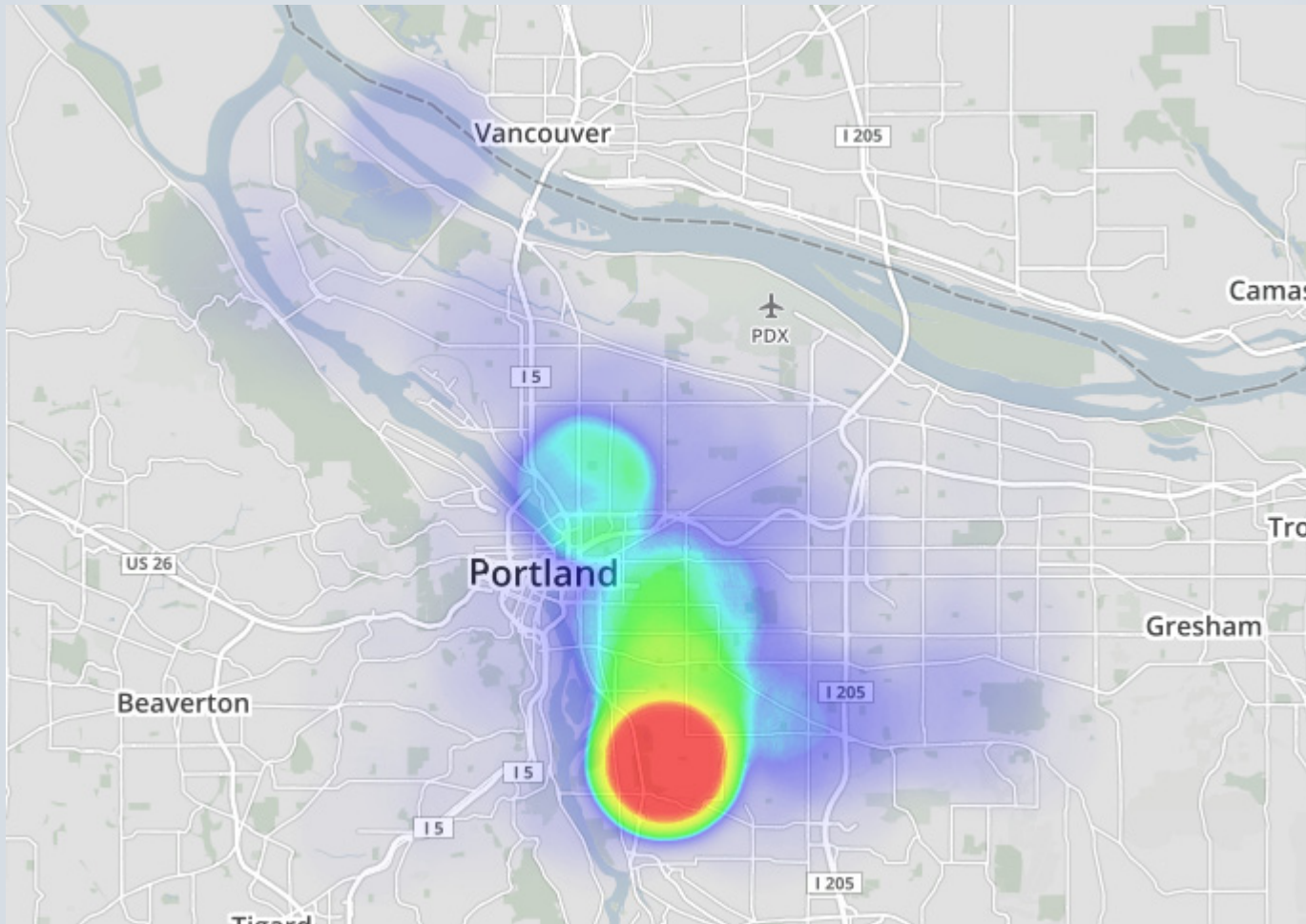
- November 18, 2014
 1. CIC Report
 2. Staff Recommendations Memo
 3. Other City Bureau Observations
- More Work Sessions in January – March
- Additional TSP Hearing in February
- Performance Evaluation – Does the plan meet our goals? Employment Opportunities Analysis (EOA) and Growth Scenario Addendum



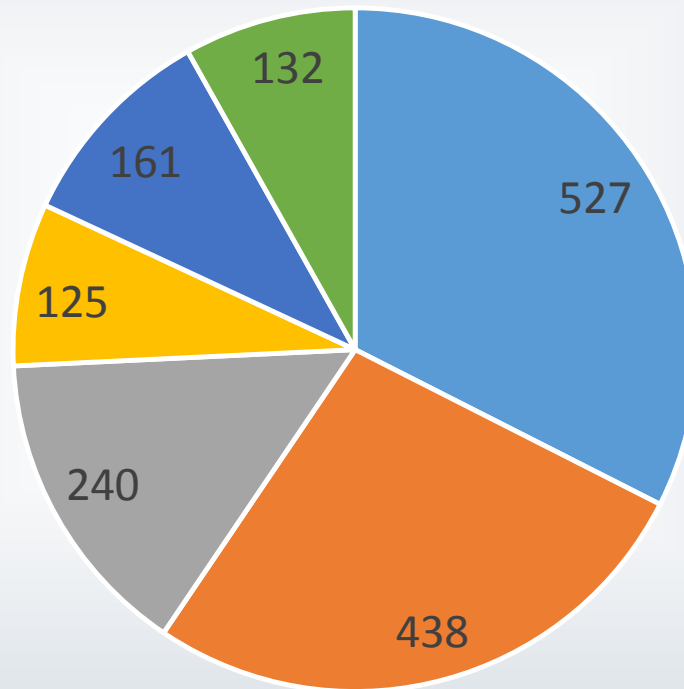
PSC Comprehensive Plan Sequence



Online Map Comments



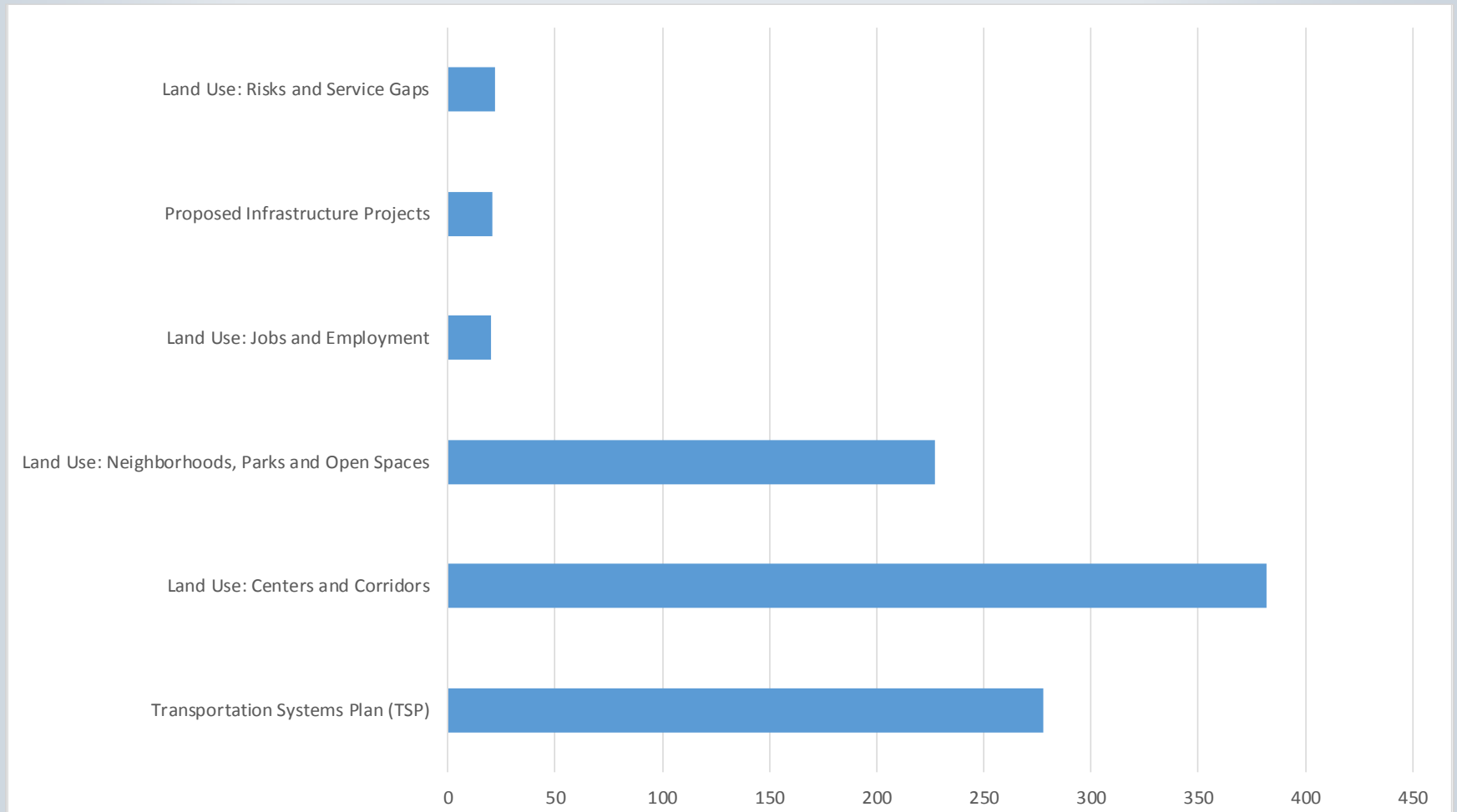
Online Map Comments



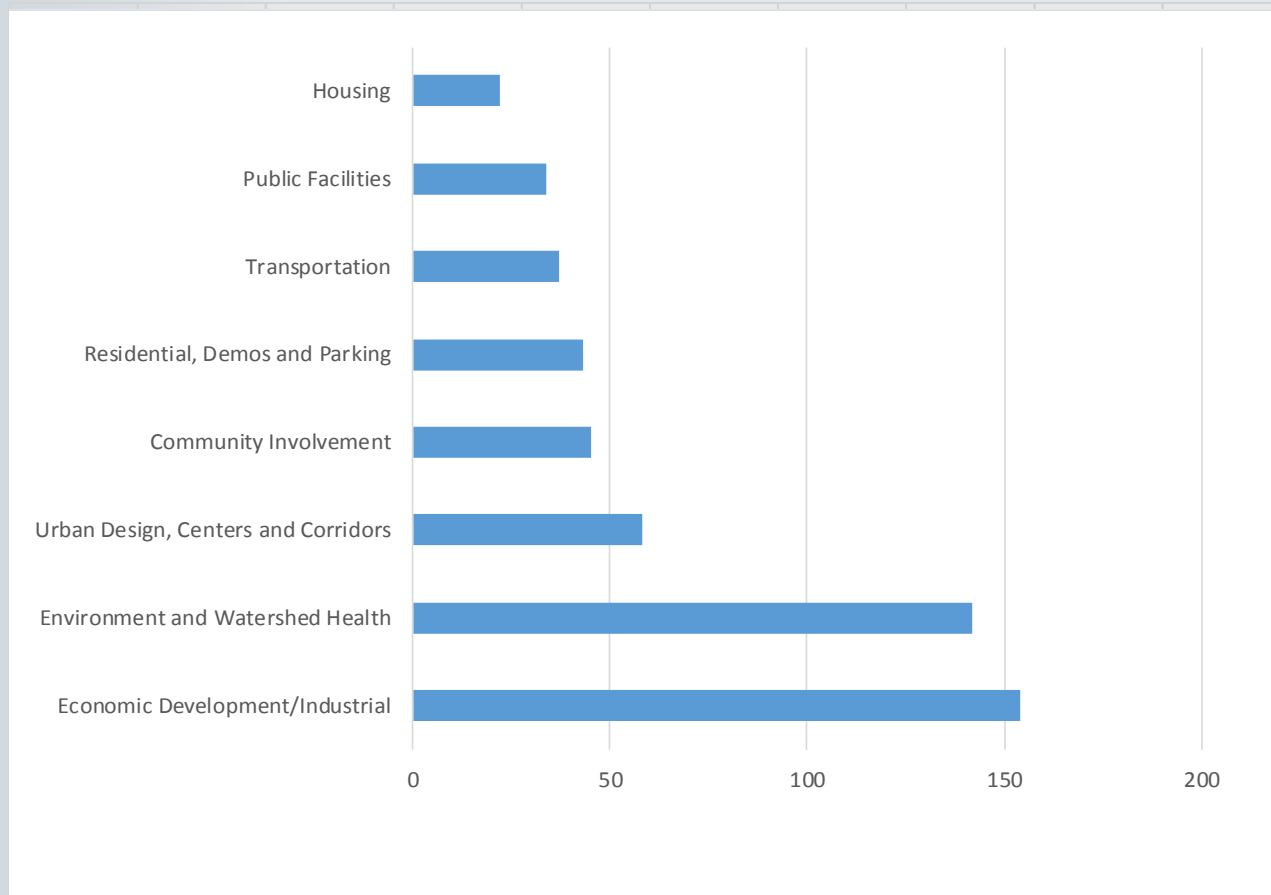
■ Southeast ■ North ■ Northeast ■ Central City ■ West ■ East



Online Map Comments



Policy Comments



The Map App

test.portlandmaps.com/bps/cpmapp2/

The Draft Comprehensive Plan
A plan for Portland

Land Use

Transportation Infrastructure

What's up near you?

Combined proposed changes

All the proposed changes, aligning the Comprehensive Plan Map with draft goals and policies and planned infrastructure investments. Proposed changes are sorted by theme in the maps below.

- Centers and Corridors
- Jobs
- Risks and Service Gaps
- Neighborhoods, Parks and Open Space

The Comprehensive Plan Map

MAPS INFO LEGEND FAQS CONTACT

Powered by esri



Your input matters!

- Through the Map App:
www.portlandoregon.gov/bps/mapapp
(the maps and projects)
- By email: psc@portlandoregon.gov with
“Comprehensive Plan Testimony” in the subject
line
- By mail: Send a letter to the PSC, 1900 SW 4th
Avenue, Portland, OR 97201-5380



Questions?

- Website:
www.portlandoregon.gov/bps/pdxcompplan

- Help Line:

