



# 2035 Comprehensive Plan Public Hearings

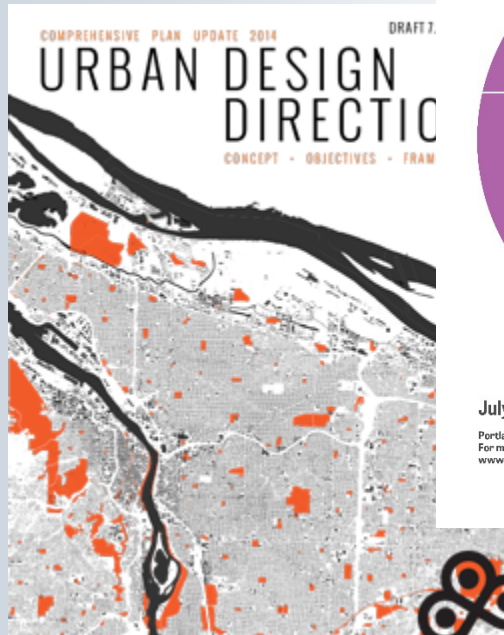
September 23, 2014



Bureau of Planning and Sustainability  
Innovation. Collaboration. Practical Solutions.



# Plan Elements



... COMPREHENSIVE PLAN UPDATE ...

## 2035 Comprehensive Plan

### Proposed Draft

What's Inside?

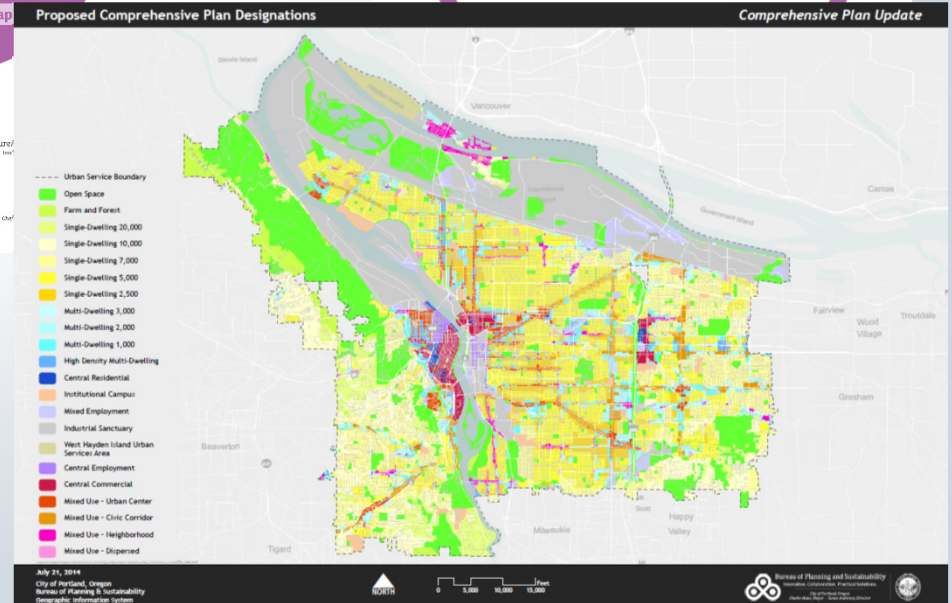
- Introduction
- About the Plan
- Goals and Policies
- List of Significant Projects
- Comprehensive Plan Map
- Glossary

July 2014  
 Portland's Comprehensive Plan Update  
 For more information, visit:  
[www.portlandoregon.gov/bps/plxcompplan](http://www.portlandoregon.gov/bps/plxcompplan)

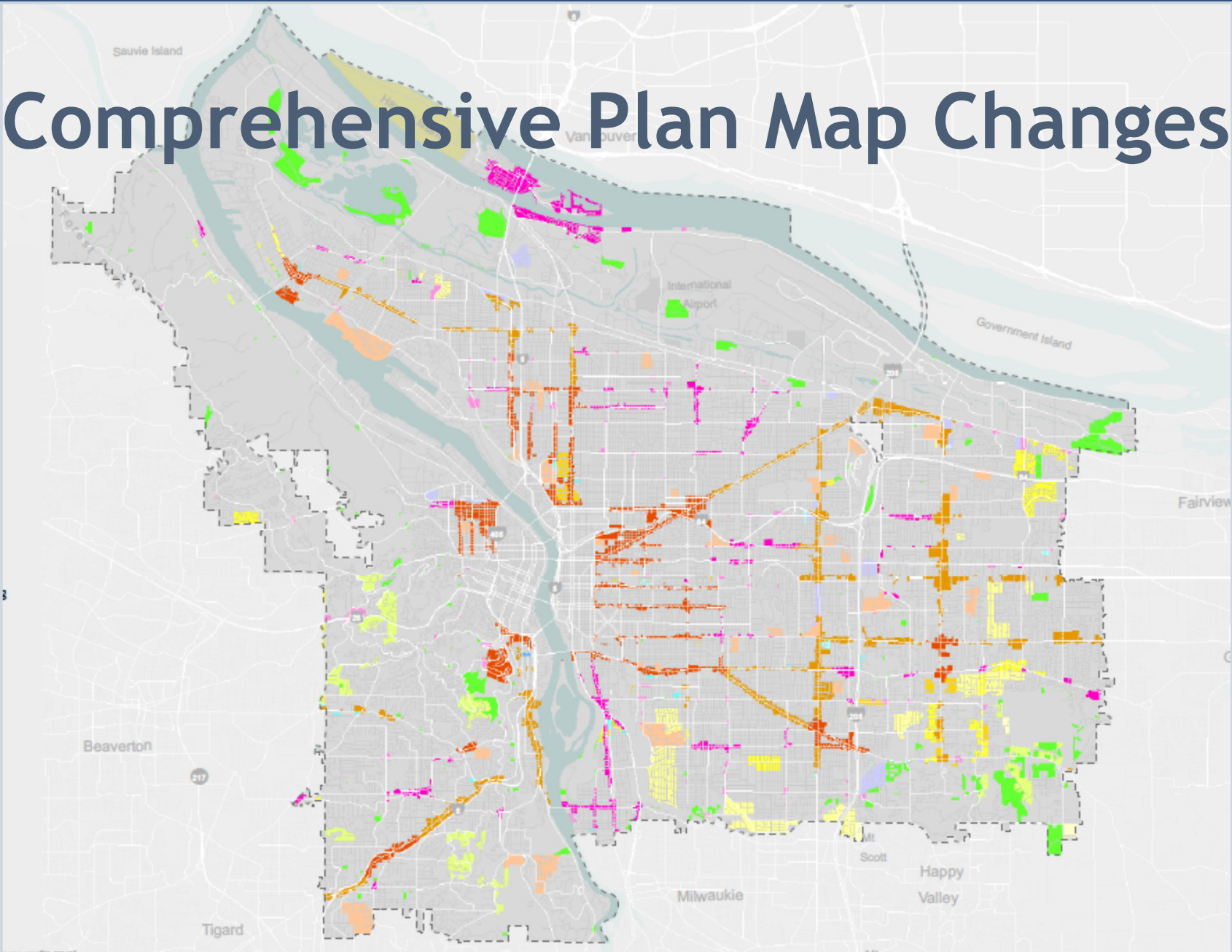
... COMPREHENSIVE PLAN UPDATE ...

## Citywide Systems Plan

### Proposed Draft



# Comprehensive Plan Map Changes



# Public Hearing Sequence

- **September 23, 2014, 5PM**
- **October 14, 2014, 5PM**  
(Parkrose High School, 12003 NE Shaver Street, Student Center)
- **October 28, 2014, 5PM**  
(Portland Community College SE Campus, Community Hall: 2305 SE 82nd Ave)
- **November 4, 2014, 4PM**



# Work Sessions

- November 18, 2014
  1. CIC Report
  2. Staff Recommendations Memo
  3. Other City Bureau Observations
- More Work Sessions in January - March
- Employment Opportunities Analysis (EOA) and Additional TSP Hearing in February



# Periodic Review

- Task 1- Community Involvement Plan (acknowledged 2010)
- Task 2 - Inventory and Analysis (acknowledged 2014)
- Task 3 - Consideration of Alternatives
- Task 4 - Policy Choices ← we are here now (The Plan! - Goals and Policies, Map, Projects)
- Task 5 - Implementation (coming in 2015)

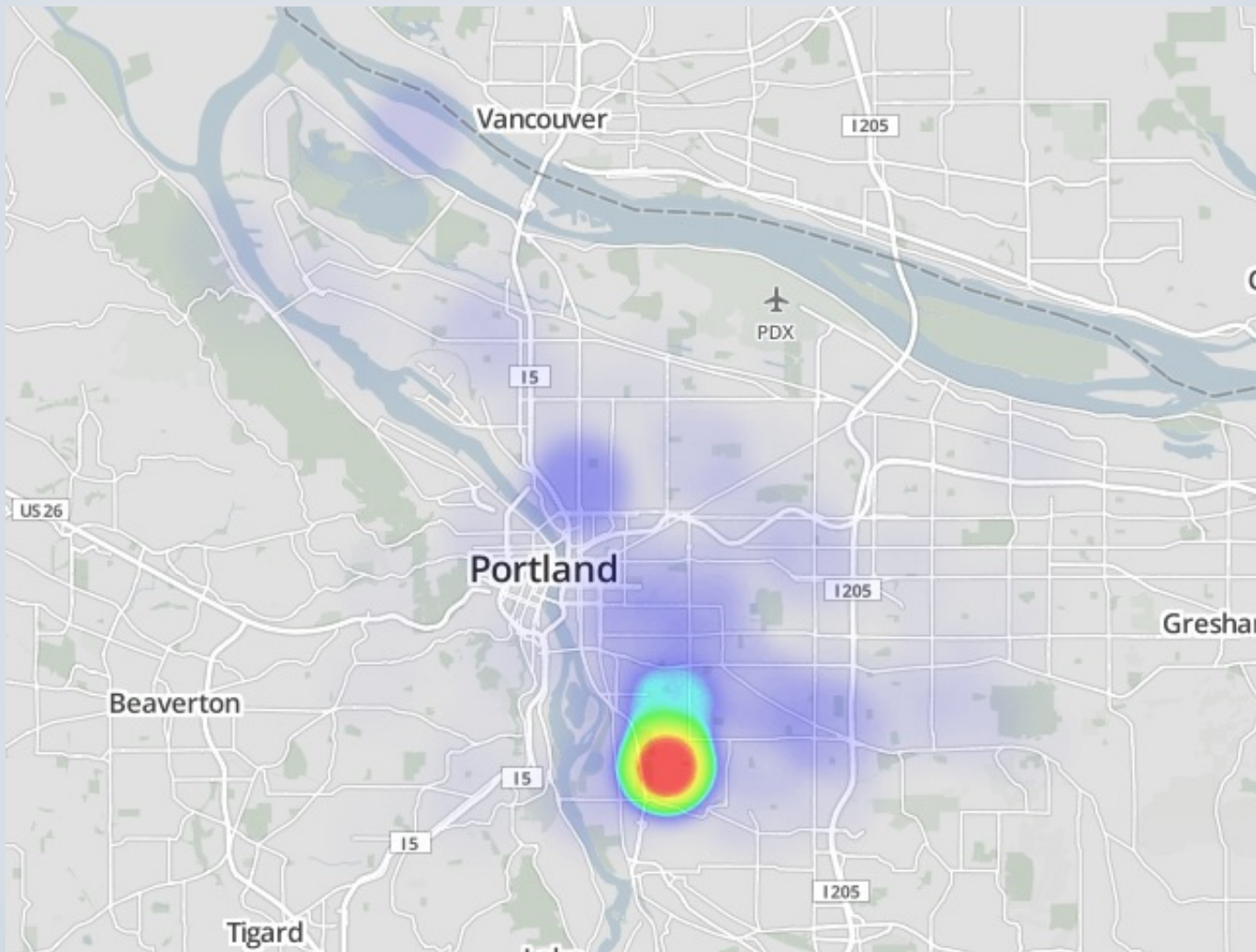


# Materials Distributed to PSC

- Errata Memo
- Memo re: 90-day extension requests
- Memo w. Summary of Comments
- Packet with comments received up to 9/16/14.

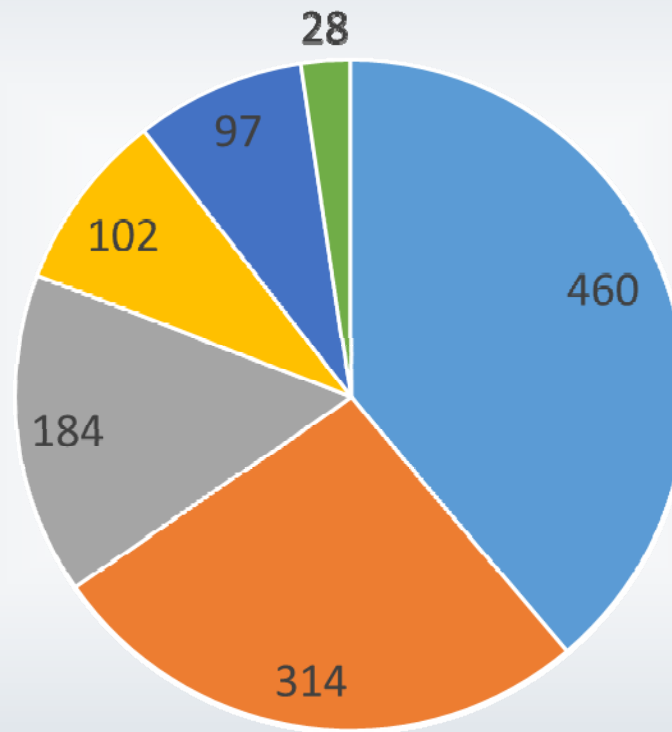


# Online Map Comments





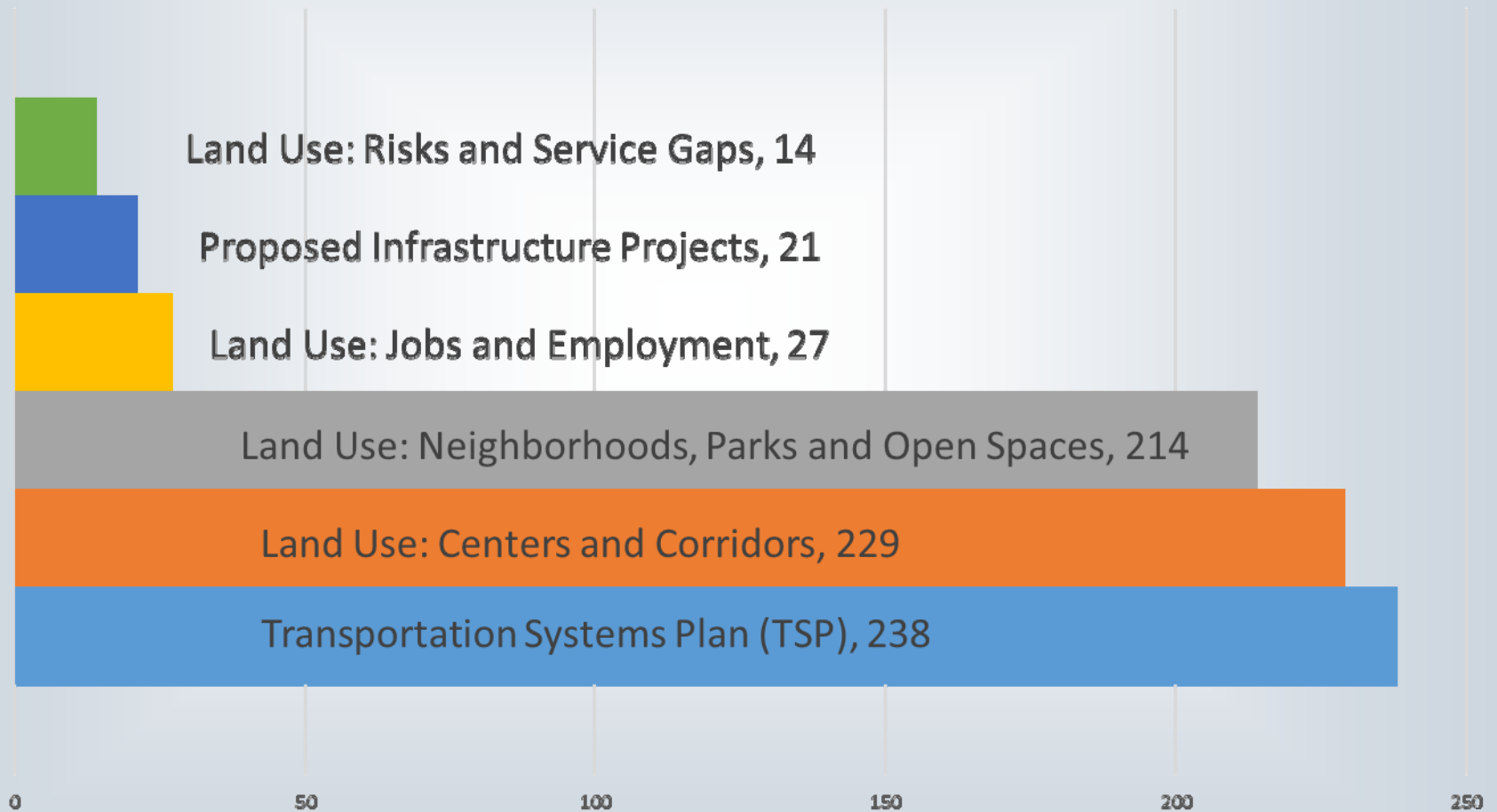
# Online Map Comments



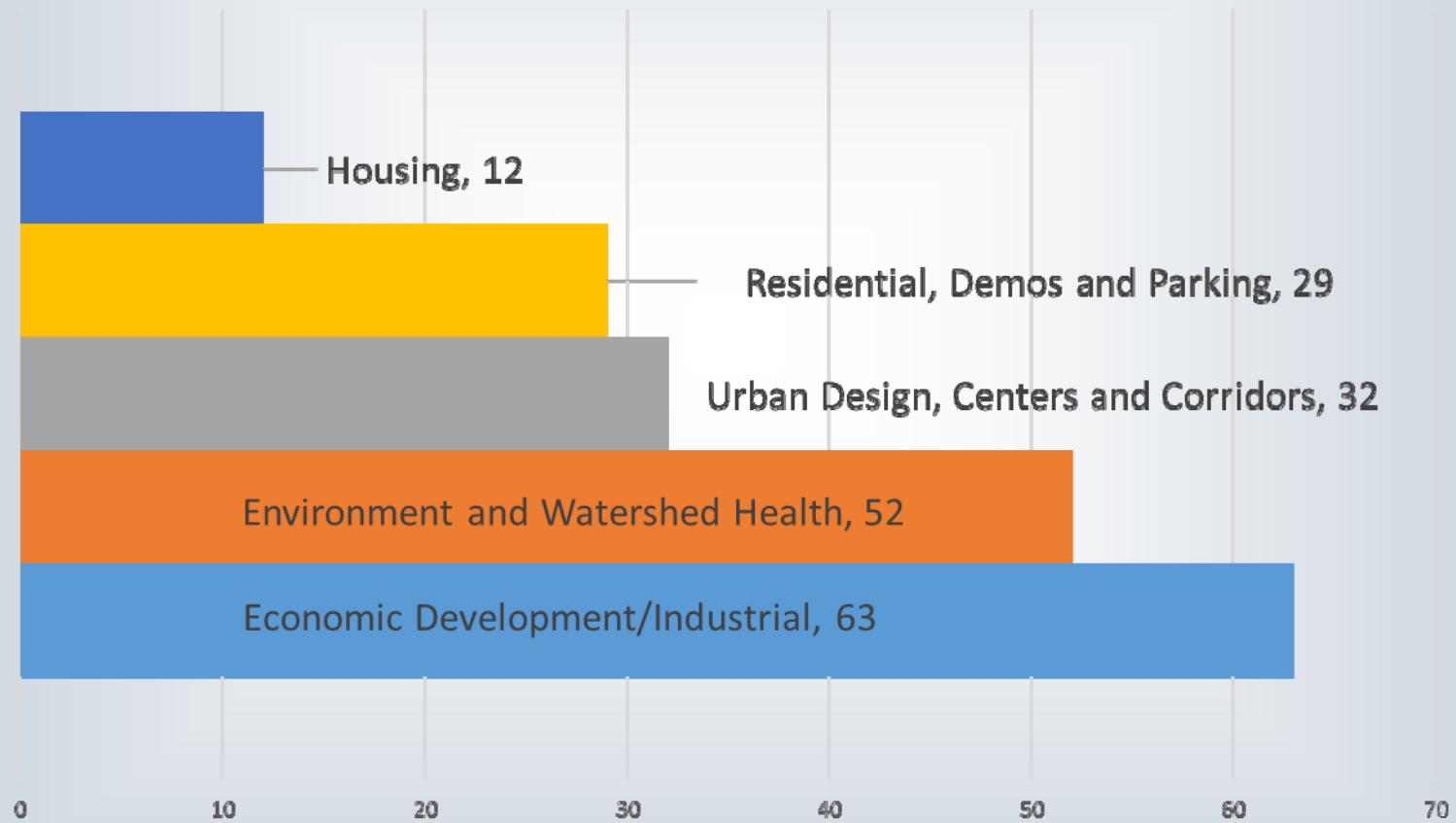
■ Southeast ■ North ■ Northeast ■ Central City ■ West ■ East



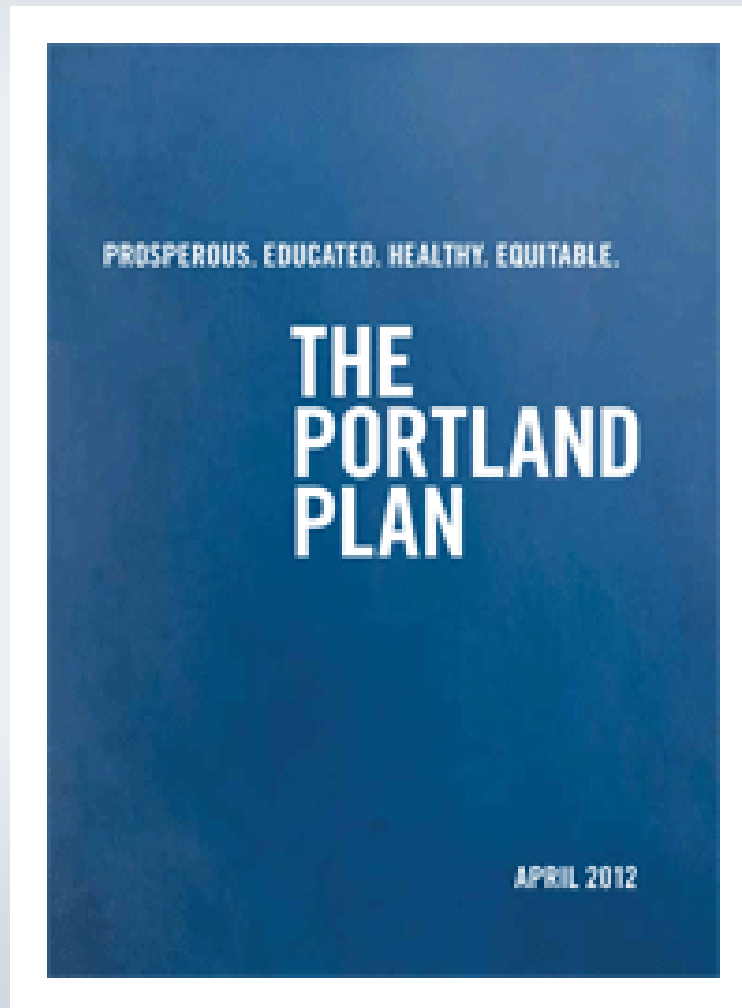
# Online Map Comments



# Policy Comments



# Portland Plan Implementation



# 12 Measures of Success

1. Equity and inclusion
2. Resident Satisfaction
3. Educated Youth
4. Prosperous Households
5. Growing Businesses
6. Job Growth
7. Transit and Active Transportation
8. Reduced Carbon Emissions
9. Complete Neighborhoods
10. Healthier People
11. Safer City
12. Healthy Watersheds



# The Map App

test.portlandmaps.com/bps/cpmapp2/

Apps Suggested Sites Imported From IE

## The Draft Comprehensive Plan

A plan for Portland

Land Use

### Combined proposed changes

All the proposed changes, aligning the Comprehensive Plan Map with draft goals and policies and planned infrastructure investments. Proposed changes are sorted by theme in the maps below.

- 1 Centers and Corridors
- 2 Jobs
- 3 Risks and Service Gaps
- 4 Neighborhoods, Parks and Open Space

The Comprehensive Plan Map

MAPS INFO LEGEND FAQS CONTACT

Transportation Infrastructure

What's up near you?

Portland

Powered by esri



# Your input matters!

- Through the Map App:  
[www.portlandoregon.gov/bps/mapapp](http://www.portlandoregon.gov/bps/mapapp)  
(the maps and projects)
- By email: psc@portlandoregon.gov with  
“Comprehensive Plan Testimony” in the  
subject line
- By mail: Send a letter to the PSC, 1900 SW  
4th Avenue, Portland, OR 97201-5380



# Questions?

- Website:  
[www.portlandoregon.gov/bps/pdxcompplan](http://www.portlandoregon.gov/bps/pdxcompplan)

- Help Line:

