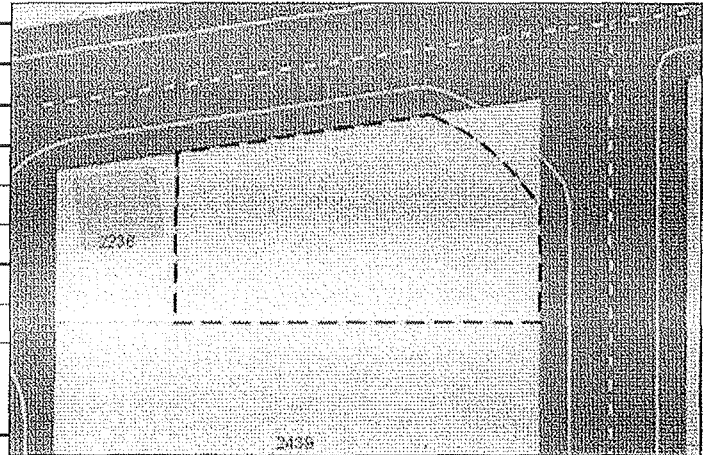


PortlandMaps

[New Search](#) | [Mapping](#) | [Advanced](#) | [Google Earth](#) | [Help](#) | [PortlandOnline](#)
**2439 NW NICOLAI ST - NORTHWEST
DISTRICT/NORTHWEST INDUSTRIAL - PORTLAND**
[Explorer](#) | [Property](#) | [Maps](#) | [Projects](#) | [Crime](#) |
[Census](#) | [Environmental](#) | [Transportation](#)
[Summary](#) | [Assessor](#) | [Permits/Cases](#) | [Block](#) | [Schools](#) | [Parks](#) | [Development](#) | [Garbage/Recycling](#) | [Noise](#) | [Historic](#)
[Permits](#) | [Water](#) | [Documents](#)
General Information

Property ID R269756
County MULTNOMAH
State ID 1N1E28CA 3700
Alt Account # R766002570
Map Number 2727 OLD
Site Info
Site Address SWC/ 22ND & NW NICOLAI ST
City/State/Zip PORTLAND OR 97210
Owner Info (Privacy)
Owner(s) Name PORTLAND CITY OF % BUREAU OF ENVIRONMENTAL SERVICES
Owner Address 1120 SW 5TH AVE #1000
City/State/Zip PORTLAND OR 97204-1912

**Property Description**

Tax Roll SHERLOCKS ADD, BLOCK 24 TL 3700	Use IMPROVED LAND AS VACANT
Lot	Block 24 TL 3700
Tax Districts	
101 PORT OF PORTLAND	130 CITY OF PORTLAND
130L CITY OF PORTLAND - NEW LEVIES	130M CITY OF PORTLAND PARKS LOP
143 METRO	170 MULTNOMAH COUNTY
170L MULT CO LIBRARY LOCAL OPT TAX	171 URBAN RENEWAL PORTLAND
173 URB REN SPECIAL LEVY - PORTLAND	198 TRI-MET TRANSPORTATION
304 MULTNOMAH ESD	309 PORTLAND COMM COLLEGE
311 PORTLAND SCHOOL DIST #1	

Deed Information

Sale Date	Type	Instrument	Sale Price
	INST	BP03070210	\$0.00

Land Information

Type	Acres	SQFT
INDUSTRIAL LAND	0.2600	11,459

Improvement Information

Improvement Type MISC YARD IMPROVEMENTS	
Improvement Value \$6,000.00	
Room Descriptions	
Building Class	
Actual Year Built 2011	Effective Year Built 2011

186778

Number of Segments 1	Construction Style
Foundation Type	Interior Finish
Roof Style	Roof Cover Type
Flooring Type	Heating/AC Type
Plumbing	Fireplace Type

Improvement Details

# Segment Type	Class	Total Area
1 FENCE		300

Tax History

Year	Property Tax	Total Tax
2013	\$0.00	\$0.00
2012	\$0.00	\$0.00
2011	\$0.00	\$0.00
2010	\$2,904.64	\$2,904.64
2009	\$2,827.70	\$2,827.70
2008	\$2,669.39	\$2,669.39
2007	\$2,663.60	\$2,663.60
2006	\$2,391.86	\$2,391.86
2005	\$2,283.58	\$2,283.58
2004	\$2,492.48	\$2,492.48
2003	\$2,437.33	\$2,437.33
2002	\$2,238.44	\$2,238.44
2001	\$2,134.51	\$2,134.51
2000	\$2,084.85	\$2,084.85
1999	\$1,938.56	\$1,938.56
1998	\$1,908.26	\$1,908.26
1997	\$1,803.06	\$1,803.06

Assessment History

Year	Improvements	Land	Special Mkt/Use	Real Market	Exemptions	Assessed
2013	\$6,000.00	\$283,300.00	\$0.00	\$289,300.00	\$289,300.00	\$0.00
2012	\$6,000.00	\$280,500.00	\$0.00	\$286,500.00	\$286,500.00	\$0.00
2011	\$6,000.00	\$272,330.00	\$0.00	\$278,330.00	\$278,330.00	\$0.00
2010	\$0.00	\$272,330.00	\$0.00	\$272,330.00	\$0.00	\$133,680.00
2009	\$0.00	\$272,330.00	\$0.00	\$272,330.00	\$0.00	\$129,790.00
2008	\$0.00	\$272,330.00	\$0.00	\$272,330.00	\$0.00	\$126,010.00
2007	\$0.00	\$261,860.00	\$0.00	\$261,860.00	\$0.00	\$122,340.00
2006	\$0.00	\$249,390.00	\$0.00	\$249,390.00	\$0.00	\$118,780.00
2005	\$0.00	\$196,370.00	\$0.00	\$196,370.00	\$0.00	\$115,330.00
2004	\$0.00	\$175,330.00	\$0.00	\$175,330.00	\$0.00	\$111,980.00
2003	\$0.00	\$175,330.00	\$0.00	\$175,330.00	\$0.00	\$108,720.00
2002	\$0.00	\$171,890.00	\$0.00	\$171,890.00	\$0.00	\$105,560.00
2001	\$0.00	\$188,310.00	\$0.00	\$188,310.00	\$0.00	\$102,490.00
2000	\$0.00	\$160,950.00	\$0.00	\$160,950.00	\$0.00	\$99,510.00

186778

1999	\$0.00	\$145,000.00	\$0.00	\$145,000.00	\$0.00	\$96,620.00
1998	\$0.00	\$122,900.00	\$0.00	\$122,900.00	\$0.00	\$93,810.00
1997	\$0.00	\$117,000.00	\$0.00	\$117,000.00	\$0.00	\$91,080.00

City of Portland, Corporate GIS

Assessor Data Updated 7/21/2014

THE GIS APPLICATIONS ACCESSED THROUGH THIS WEB SITE PROVIDE A VISUAL DISPLAY OF DATA FOR YOUR CONVENIENCE. EVERY REASONABLE EFFORT HAS BEEN MADE TO ASSURE THE ACCURACY OF THE MAPS AND ASSOCIATED DATA. THE CITY OF PORTLAND MAKES NO WARRANTY, REPRESENTATION OR GUARANTEE AS TO THE CONTENT, SEQUENCE, ACCURACY, TIMELINESS OR COMPLETENESS OF ANY OF THE DATA PROVIDED HEREIN. THE USER OF THESE APPLICATIONS SHOULD NOT RELY ON THE DATA PROVIDED HEREIN FOR ANY REASON. THE CITY OF PORTLAND EXPLICITLY DISCLAIMS ANY REPRESENTATIONS AND WARRANTIES, INCLUDING, WITHOUT LIMITATION, THE IMPLIED WARRANTIES OF MERCHANTABILITY AND FITNESS FOR A PARTICULAR PURPOSE. THE CITY OF PORTLAND SHALL ASSUME NO LIABILITY FOR ANY ERRORS, OMISSIONS, OR INACCURACIES IN THE INFORMATION PROVIDED REGARDLESS OF HOW CAUSED. THE CITY OF PORTLAND SHALL ASSUME NO LIABILITY FOR ANY DECISIONS MADE OR ACTIONS TAKEN OR NOT TAKEN BY THE USER OF THE APPLICATIONS IN RELIANCE UPON ANY INFORMATION OR DATA FURNISHED HEREUNDER. FOR UPDATED INFORMATION ABOUT THE MAP DATA ON PORTLANDMAPS PLEASE REFER TO [CITY'S METADATA](#). FOR QUESTIONS ABOUT ASSESSMENT INFORMATION PLEASE CONTACT THE COUNTY ASSESSORS OFFICE IN YOUR COUNTY.

[Address](#) | [Mapping](#) | [Advanced](#) | [Google Earth](#) | [Help](#) | [About](#)PortlandMaps © 2014 [City of Portland, Oregon](#)

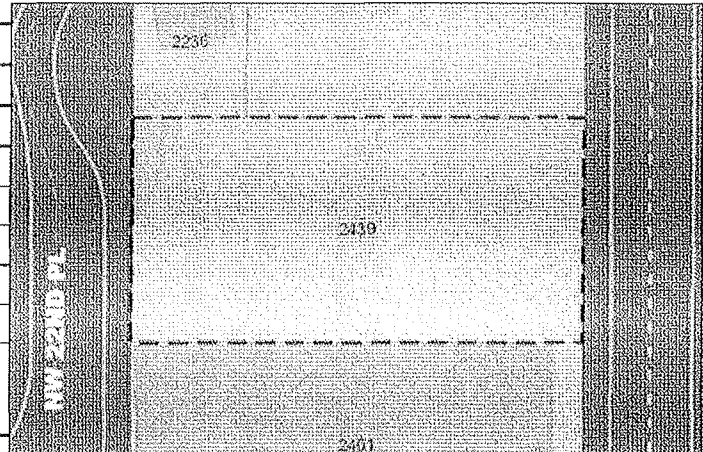
Exhibit B

PortlandMaps

[New Search](#) | [Mapping](#) | [Advanced](#) | [Google Earth](#) | [Help](#) | [PortlandOnline](#)2439 NW 22ND AVE - NORTHWEST
DISTRICT - PORTLAND[Explorer](#) | [Property](#) | [Maps](#) | [Projects](#) | [Crime](#) | [Census](#) |
[Environmental](#) | [Transportation](#)
[Summary](#) | [Assessor](#) | [Permits/Cases](#) | [Block](#) | [Schools](#) | [Parks](#) | [Development](#) | [Garbage/Recycling](#) | [Noise](#) | [Historic](#)
[Permits](#) | [Water](#) | [Documents](#)

General Information

Property ID R269755
County MULTNOMAH
State ID 1N1E28CA 3900
Alt Account # R766002530
Map Number 2727 OLD
Site Info
Site Address 2439 NW 22ND AVE
City/State/Zip PORTLAND OR 97210
Owner Info (Privacy)
Owner(s) Name PORTLAND CITY OF % BUREAU OF ENVIRONMENTAL SERVICES
Owner Address 1120 SW 5TH AVE #1000
City/State/Zip PORTLAND OR 97204-1912



Property Description

Tax SHERLOCKS ADD, BLOCK 24, LOT 7-10, ENTERPRISE ZONE, POTENTIAL Roll ADDITIONAL TAX	Use IMPROVED LAND AS VACANT
Lot 7-10	Block 24

Tax Districts

101 PORT OF PORTLAND	130 CITY OF PORTLAND
130L CITY OF PORTLAND - NEW LEVIES	130M CITY OF PORTLAND PARKS LOP
143 METRO	170 MULTNOMAH COUNTY
170L MULT CO LIBRARY LOCAL OPT TAX	171 URBAN RENEWAL PORTLAND
173 URB REN SPECIAL LEVY - PORTLAND	198 TRI-MET TRANSPORTATION
304 MULTNOMAH ESD	309 PORTLAND COMM COLLEGE
311 PORTLAND SCHOOL DIST #1	

Deed Information

Sale Date	Type	Instrument	Sale Price
05/21/2010	WARRANTY DEED	2010096715	\$772,975.00
03/10/2003	WARRANTY DEED	2003057087	\$416,000.00
	INST	BP08450560	\$0.00

Land Information

Type	Acres	SQFT
INDUSTRIAL LAND	0.4600	20,000

Improvement Information

Improvement Type MISC YARD IMPROVEMENTS
Improvement Value \$5,000.00

186778

Room Descriptions	
Building Class	
Actual Year Built 2011	Effective Year Built 2011
Number of Segments 1	Construction Style
Foundation Type	Interior Finish
Roof Style	Roof Cover Type
Flooring Type	Heating/AC Type
Plumbing	Fireplace Type

Improvement Details

# Segment Type	Class	Total Area
1 FENCE		0

Tax History

Year	Property Tax	Total Tax
2013	\$0.00	\$0.00
2012	\$0.00	\$0.00
2011	\$0.00	\$0.00
2010	\$7,601.82	\$7,601.82
2009	\$7,631.47	\$7,631.47
2008	\$7,532.88	\$7,532.88
2007	\$7,273.53	\$7,273.53
2006	\$6,886.22	\$6,886.22
2005	\$5,442.97	\$5,442.97
2004	\$5,183.31	\$5,183.31
2003	\$5,185.59	\$5,185.59
2002	\$5,119.20	\$5,119.20
2001	\$8,928.97	\$8,928.97
2000	\$8,720.89	\$8,720.89
1999	\$8,108.47	\$8,108.47
1998	\$7,981.30	\$7,981.30
1997	\$7,389.11	\$7,389.11

Assessment History

Year	Improvements	Land	Special Mkt/Use	Real Market	Exemptions	Assessed
2013	\$5,000.00	\$494,450.00	\$0.00	\$499,450.00	\$499,450.00	\$0.00
2012	\$5,000.00	\$489,560.00	\$0.00	\$494,560.00	\$494,560.00	\$0.00
2011	\$5,000.00	\$475,300.00	\$0.00	\$480,300.00	\$480,300.00	\$0.00
2010	\$0.00	\$475,300.00	\$0.00	\$475,300.00	\$0.00	\$475,300.00
2009	\$0.00	\$475,300.00	\$0.00	\$475,300.00	\$0.00	\$475,300.00
2008	\$0.00	\$475,300.00	\$0.00	\$475,300.00	\$0.00	\$461,740.00
2007	\$0.00	\$457,020.00	\$0.00	\$457,020.00	\$0.00	\$448,300.00
2006	\$0.00	\$435,250.00	\$0.00	\$435,250.00	\$0.00	\$435,250.00
2005	\$0.00	\$342,720.00	\$0.00	\$342,720.00	\$0.00	\$342,720.00
2004	\$0.00	\$306,000.00	\$0.00	\$306,000.00	\$0.00	\$306,000.00
2003	\$0.00	\$306,000.00	\$0.00	\$306,000.00	\$0.00	\$306,000.00

18 67 78

2002	\$0.00	\$300,000.00	\$0.00	\$300,000.00	\$0.00	\$300,000.00
2001	\$347,340.00	\$273,380.00	\$0.00	\$620,720.00	\$0.00	\$428,730.00
2000	\$347,340.00	\$233,660.00	\$0.00	\$581,000.00	\$0.00	\$416,250.00
1999	\$347,340.00	\$210,500.00	\$0.00	\$557,840.00	\$0.00	\$404,130.00
1998	\$347,340.00	\$189,600.00	\$0.00	\$536,940.00	\$0.00	\$392,360.00
1997	\$253,960.00	\$180,580.00	\$0.00	\$434,540.00	\$0.00	\$380,940.00

City of Portland, Corporate GIS

Assessor Data Updated 7/21/2014

THE GIS APPLICATIONS ACCESSED THROUGH THIS WEB SITE PROVIDE A VISUAL DISPLAY OF DATA FOR YOUR CONVENIENCE. EVERY REASONABLE EFFORT HAS BEEN MADE TO ASSURE THE ACCURACY OF THE MAPS AND ASSOCIATED DATA. THE CITY OF PORTLAND MAKES NO WARRANTY, REPRESENTATION OR GUARANTEE AS TO THE CONTENT, SEQUENCE, ACCURACY, TIMELINESS OR COMPLETENESS OF ANY OF THE DATA PROVIDED HEREIN. THE USER OF THESE APPLICATIONS SHOULD NOT RELY ON THE DATA PROVIDED HEREIN FOR ANY REASON. THE CITY OF PORTLAND EXPLICITLY DISCLAIMS ANY REPRESENTATIONS AND WARRANTIES, INCLUDING, WITHOUT LIMITATION, THE IMPLIED WARRANTIES OF MERCHANTABILITY AND FITNESS FOR A PARTICULAR PURPOSE. THE CITY OF PORTLAND SHALL ASSUME NO LIABILITY FOR ANY ERRORS, OMISSIONS, OR INACCURACIES IN THE INFORMATION PROVIDED REGARDLESS OF HOW CAUSED. THE CITY OF PORTLAND SHALL ASSUME NO LIABILITY FOR ANY DECISIONS MADE OR ACTIONS TAKEN OR NOT TAKEN BY THE USER OF THE APPLICATIONS IN RELIANCE UPON ANY INFORMATION OR DATA FURNISHED HEREUNDER. FOR UPDATED INFORMATION ABOUT THE MAP DATA ON PORTLANDMAPS PLEASE REFER TO [CITY'S METADATA](#). FOR QUESTIONS ABOUT ASSESSMENT INFORMATION PLEASE CONTACT THE COUNTY ASSESSORS OFFICE IN YOUR COUNTY.

[Address](#) | [Mapping](#) | [Advanced](#) | [Google Earth](#) | [Help](#) | [About](#)PortlandMaps © 2014 [City of Portland, Oregon](#)