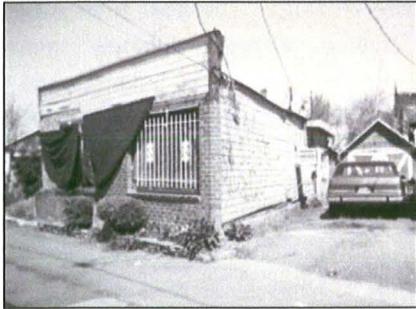


## WHAT ARE BROWNFIELDS?



Brownfields are properties where the redevelopment, or reuse may be complicated by the presence of a hazardous substances, pollutants, or contaminants.

Brownfields are often found disproportionately in low-income urban neighborhoods.

Groundwork Portland is positioned to partner with communities to help remediate brownfields so they can benefit existing residents.

Groundwork Portland is looking for volunteers to join working groups for all of its projects and programs.

To join a working group or to donate, contact the organization at:

3808 NE Martin Luther King Jr.  
Blvd

Portland, OR 97212

(503) 662-2590

[cassie@groundworkportland.org](mailto:cassie@groundworkportland.org)

[www.groundworkportland.org](http://www.groundworkportland.org)

Facebook Pages:

Groundwork Portland &  
Groundwork Portland Green Team



***"Everyone has the right to a  
healthy, livable community"***



## WHAT IS GROUNDWORK PORTLAND?

**GROUNDWORK PORTLAND** is a nonprofit organization that brings about sustainable, community-led improvement of the physical environment in low-income areas, while promoting awareness of environmental and social justice issues.

Groundwork Portland partners with communities to clean up vacant, contaminated land and transform it into useful space. Projects involve collaboration with government agencies, nonprofit organizations, businesses, and schools.



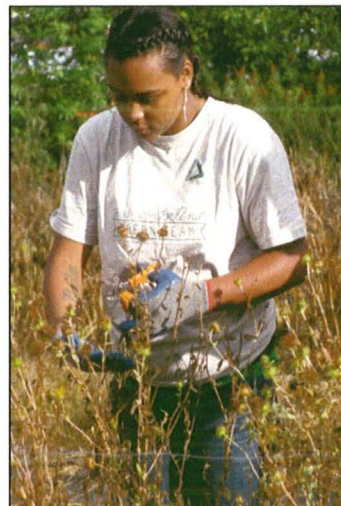
## WHAT ARE GROUNDWORK PORTLAND'S INITIATIVES?

**Emerson Street Garden** A pilot brownfield project of Groundwork Portland, this free community garden is located in the King Neighborhood in Northeast Portland. The Friends of Emerson Working Group guide the planning, development, community outreach and organizing for the garden. Volunteers of all ages have created a space for sharing, neighborhood networking, and

inter-generational learning. The Garden provides open space and fresh, locally grown produce for local residents who otherwise might not have access.



**Green Teams** Groundwork Portland's Green Teams are Portland Metro-area youth from disadvantaged backgrounds who participate in activities during the summer. These activities span restoration and service, remediation and monitoring of soil and water, learning about nature, leadership, community service, and advocacy skills.



### Portland Harbor Community Coalition

Groundwork Portland is partnered with conservation groups, community of color organizations, environmental justice organizations, higher education institutions, and tribes – all invested in the outcome of the Willamette River's Superfund site cleanup. The goal is to raise the voices of diverse, disproportionately impacted communities so they are able to influence the final outcome of the Portland Harbor Superfund Cleanup Process.



**East Portland Brownfields Project** After the successful community collaboration in North Portland, Groundwork Portland has shifted their focus to look at brownfields in East Portland, an area historically underserved by local and state agencies. High School students documented vacant lots in the neighborhood, and presented at a Community Visioning workshop, which helped establish priorities for the redevelopment of a nearby empty lot. Groundwork Portland has collaborated with the National Park Service, Metropolitan Family Services, David Douglas High School's Schools Uniting Neighborhoods (SUN) program, the City of Portland's Brownfields Program, and the Bureau of Planning and Sustainability's Youth Planning Program.



## Take Action

Now is the critical time to voice what you want to have happen with the Portland Harbor cleanup. The EPA will make major decisions in 2014 or 2015 that will determine the future of our Willamette River.

Please join the Portland Harbor Community Coalition (PHCC), a group of individuals, community of color organizations, conservation groups, environmental justice organizations and educational institutions. PHCC is mobilizing the community to shape the future of the Willamette River.

[www.ourfutereriver.org](http://www.ourfutereriver.org)



**Portland Harbor Community Coalition**

[www.ourfutereriver.org](http://www.ourfutereriver.org)

[ourfutereriver@gmail.com](mailto:ourfutereriver@gmail.com)

503.662.2590



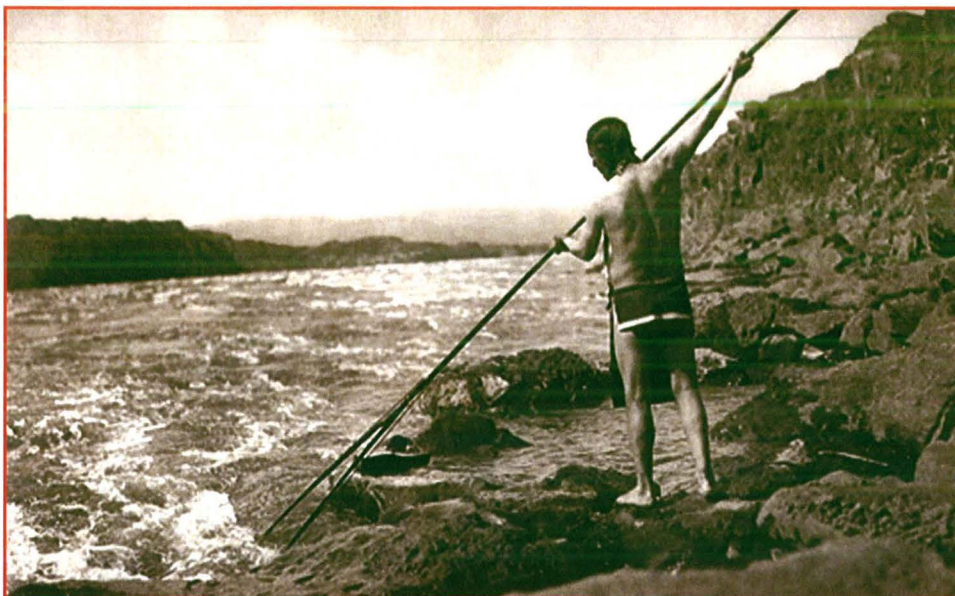
**Our river is the lifeline, our future**

*Portland Harbor Community Coalition*

Willamette River

*Portland, Oregon*



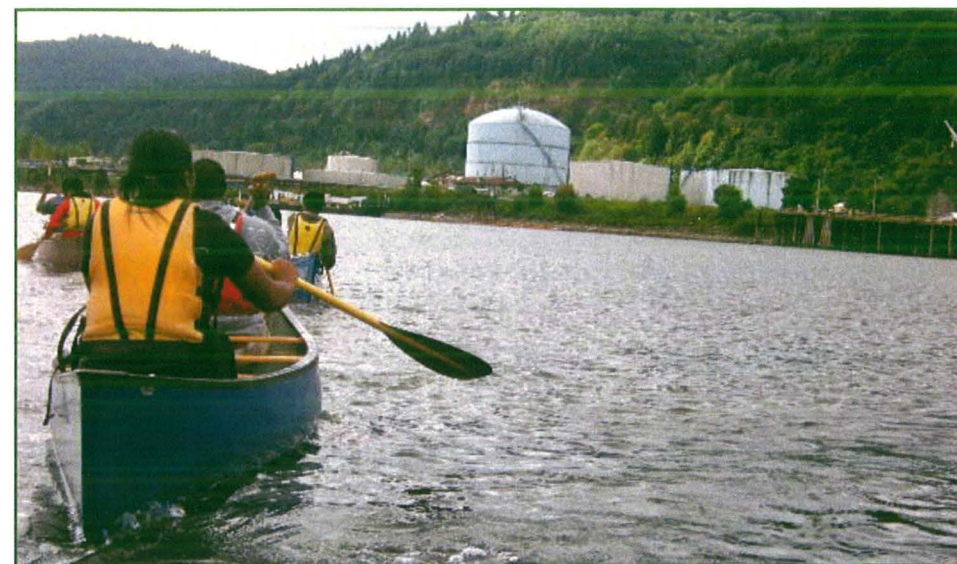


### Time Immemorial

Northwest Native peoples have inhabited lands along the Willamette River since time immemorial, living in harmony with the natural environment -- the fish, water and land. Native people were able to sustain their villages and trade with other tribes in large part due to the salmon, lamprey eel and other species that traveled in abundance through the river. The river and fish are considered sacred relatives, and are respected for their contributions to the cycle of life.

### Environmental Degradation

With the arrival of Europeans to the area, and the urban development that followed, the Willamette River and its watershed were degraded and polluted. Over a century of industrial activity along the Willamette has left behind toxic soil and sediment, forever altering the sacred landscape and water that nourish all living things. The toxic waste became so extreme by 2000 that the EPA designated an 11-mile stretch of the river the Portland Harbor Superfund site. Superfund is the federal government's program to clean up the nation's hazardous waste sites.



### Risks

Twenty-nine different toxic compounds that pose a risk to human health, and 89 that threaten ecological health, are present at the Portland Harbor Superfund site. Of these, polychlorinated biphenyls (PCBs) represent the most serious threat for humans and wildlife. Consuming catfish, bass and carp from Portland Harbor is a health risk for recreational and subsistence fishers, and for infants that are breast-fed by mothers who eat resident fish. These health risks are serious enough for cleanup to be necessary under the Superfund law.



**Parsons, Susan**

---

**From:** Faduma Ali <faduma@groundworkportland.org>  
**Sent:** Thursday, June 26, 2014 10:35 AM  
**To:** Parsons, Susan  
**Subject:** Communication Request

Hi Susan,

I would like to confirm my attendance for the council hearing on **August 13th , 2014 at 9:30 with Groundwork Portland.**

Thank you ,

Faduma Ali  
Groundwork Portland, Portland Harbor Community Organizer  
[Faduma@groundworkportland.org](mailto:Faduma@groundworkportland.org)  
3802 NE Martin Luther King Junior Boulevard  
Portland, OR 97212  
(503) 662-2590  
<http://www.groundworkportland.org>  
[www.ourfutereriver.com](http://www.ourfutereriver.com)  
*Like us on Facebook!*

Request of Faduma Ali to address Council regarding Groundwork Portland  
(Communication)

AUG 13 2014

**PLACED ON FILE**

Filed AUG 08 2014

**LaVonne Griffin-Valade**  
Auditor of the City of Portland

By 

COMMISSIONERS VOTED  
AS FOLLOWS:

	YEAS	NAYS
1. Fritz		
2. Fish		
3. Saltzman		
4. Novick		
Hales		