

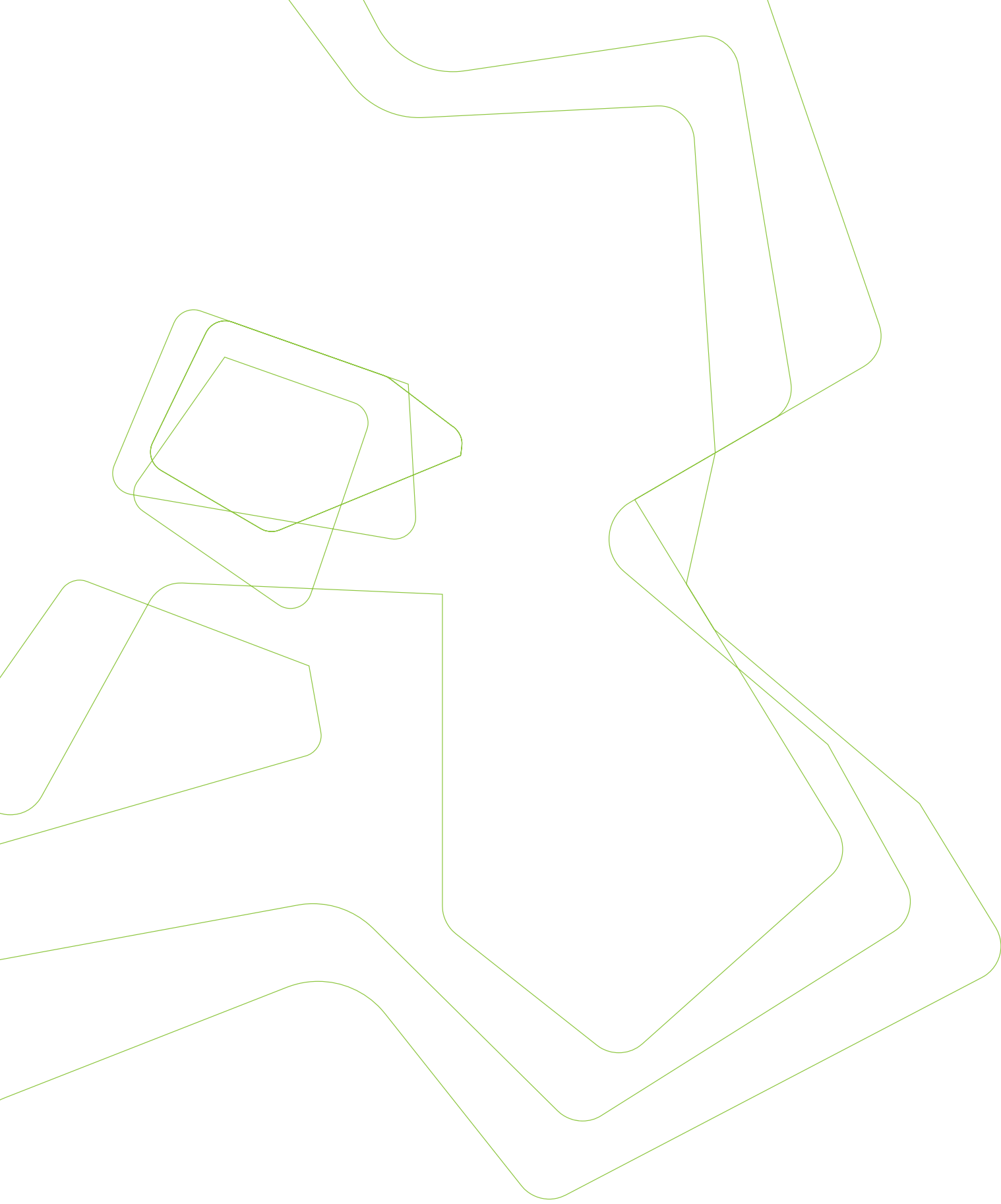


PORTLAND STATE UNIVERSITY

SCHOOL OF BUSINESS ADMINISTRATION
Renovation and Expansion

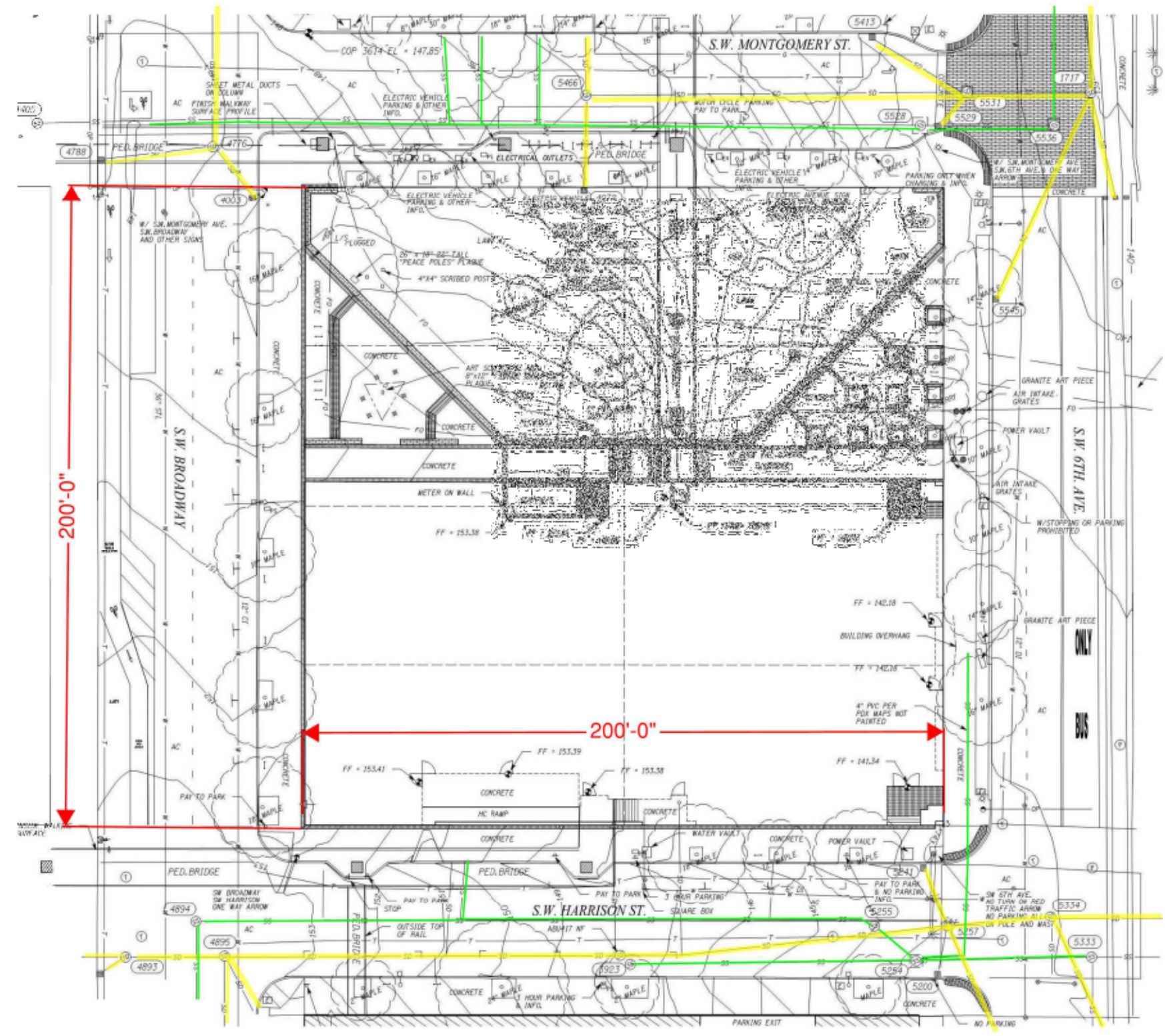
Schematic Design- DAR Submittal
December 3, 2014

SRG | BEHNISCH ARCHITEKTEN | **Mayer/Reed**



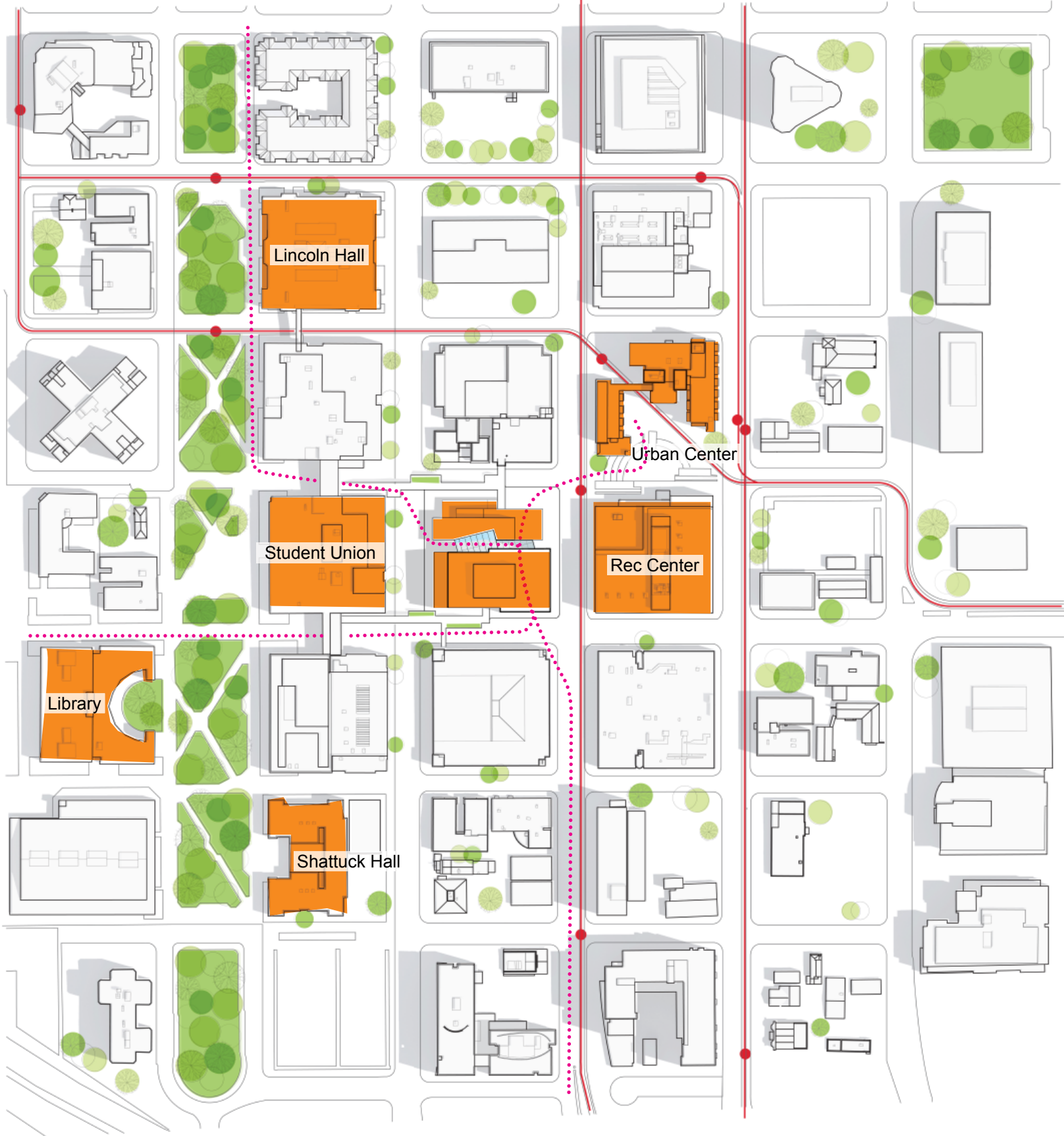
DESIGN UPDATE

Site Plan
Existing Conditions



- legend
- storm drain
 - sanitary sewer
 - FF finish floor elevation
 - ⊙_S sanitary manhole
 - sanitary clean out
 - ⊙_{SD} storm manhole
 - storm clean out
 - ▤ catch basin
 - ▤ area drain



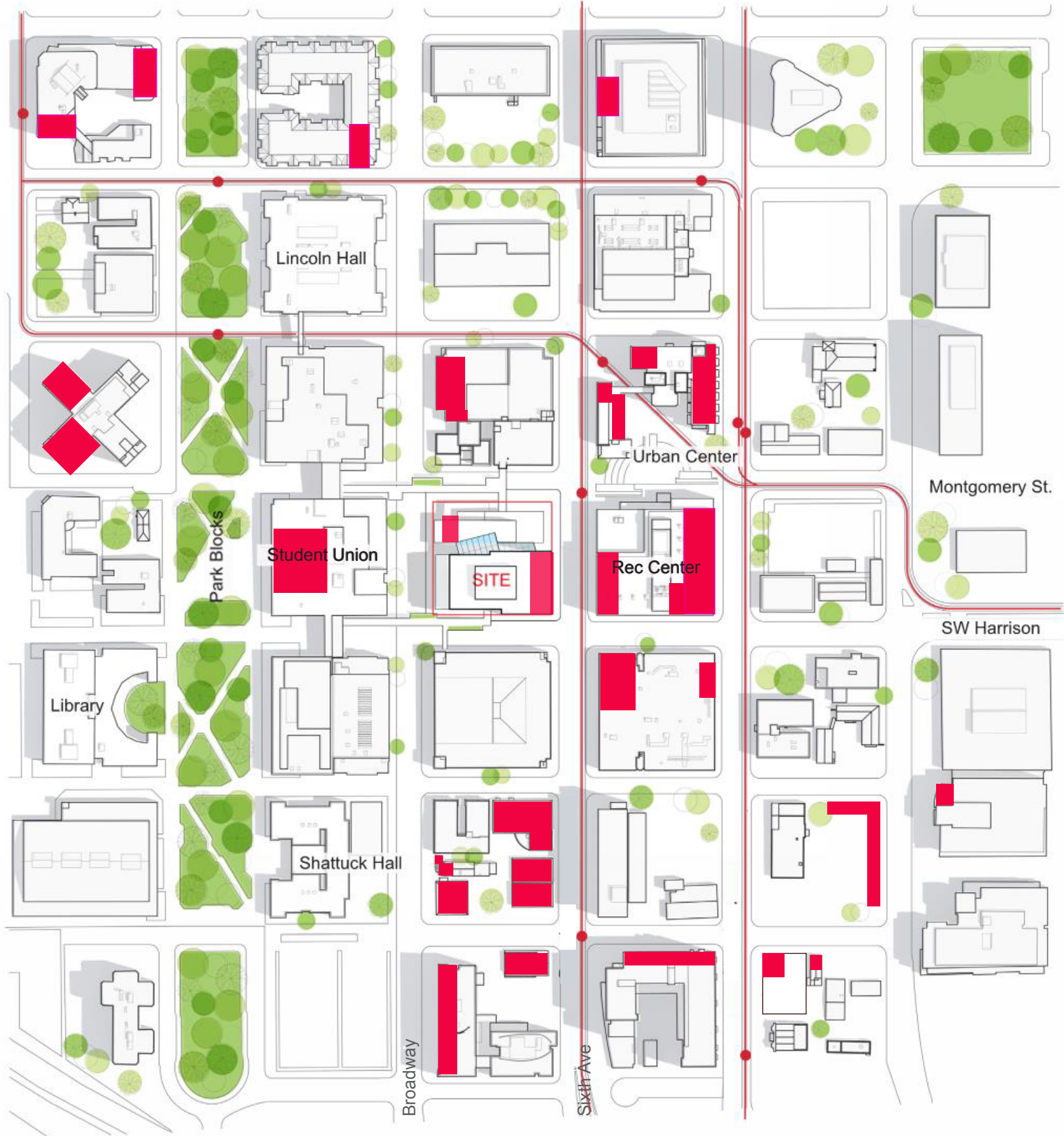


Key




- Orange square: Main PSU buildings
- Green square: Parks
- Red dotted line with arrow: Connective campus axis



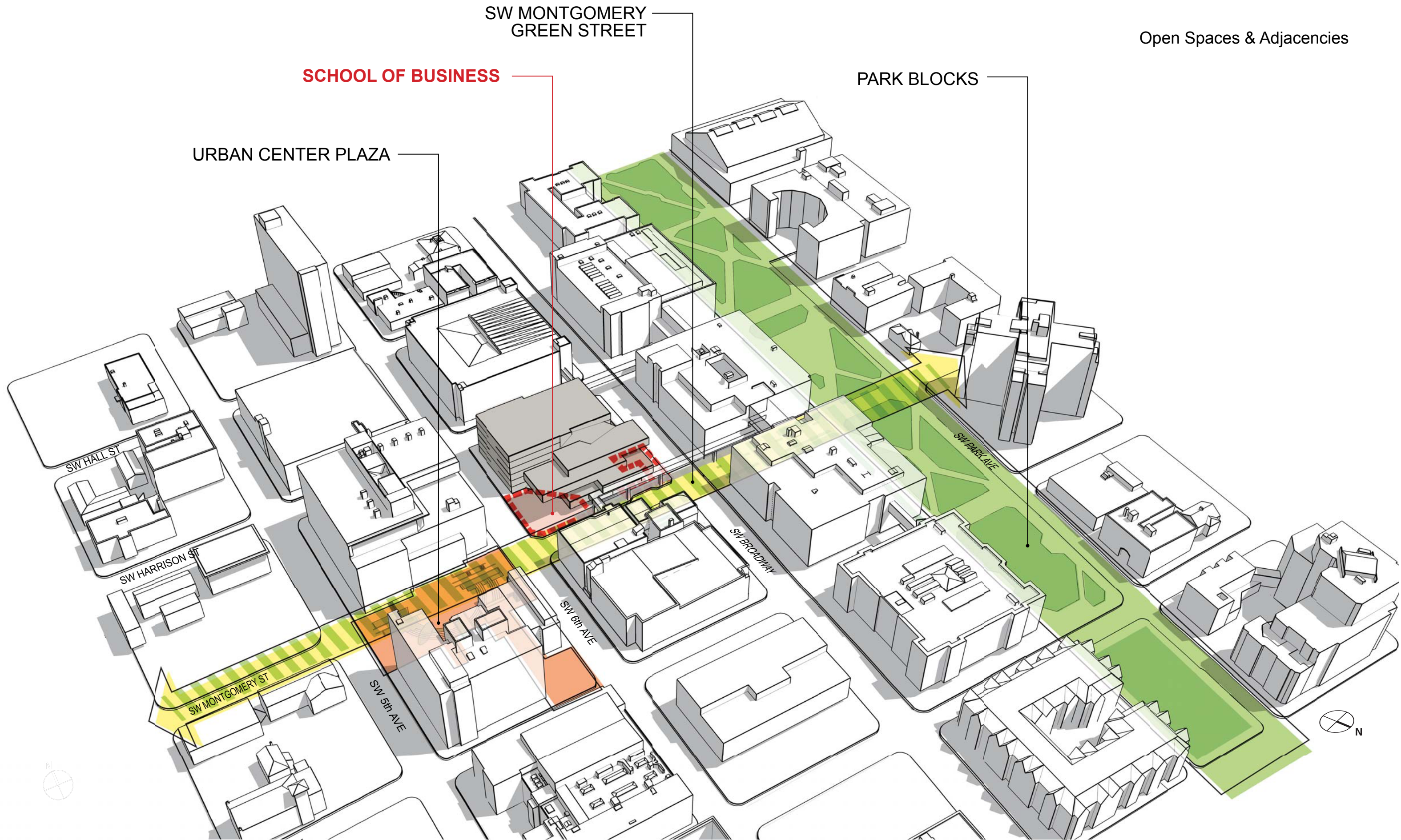
Retail Context



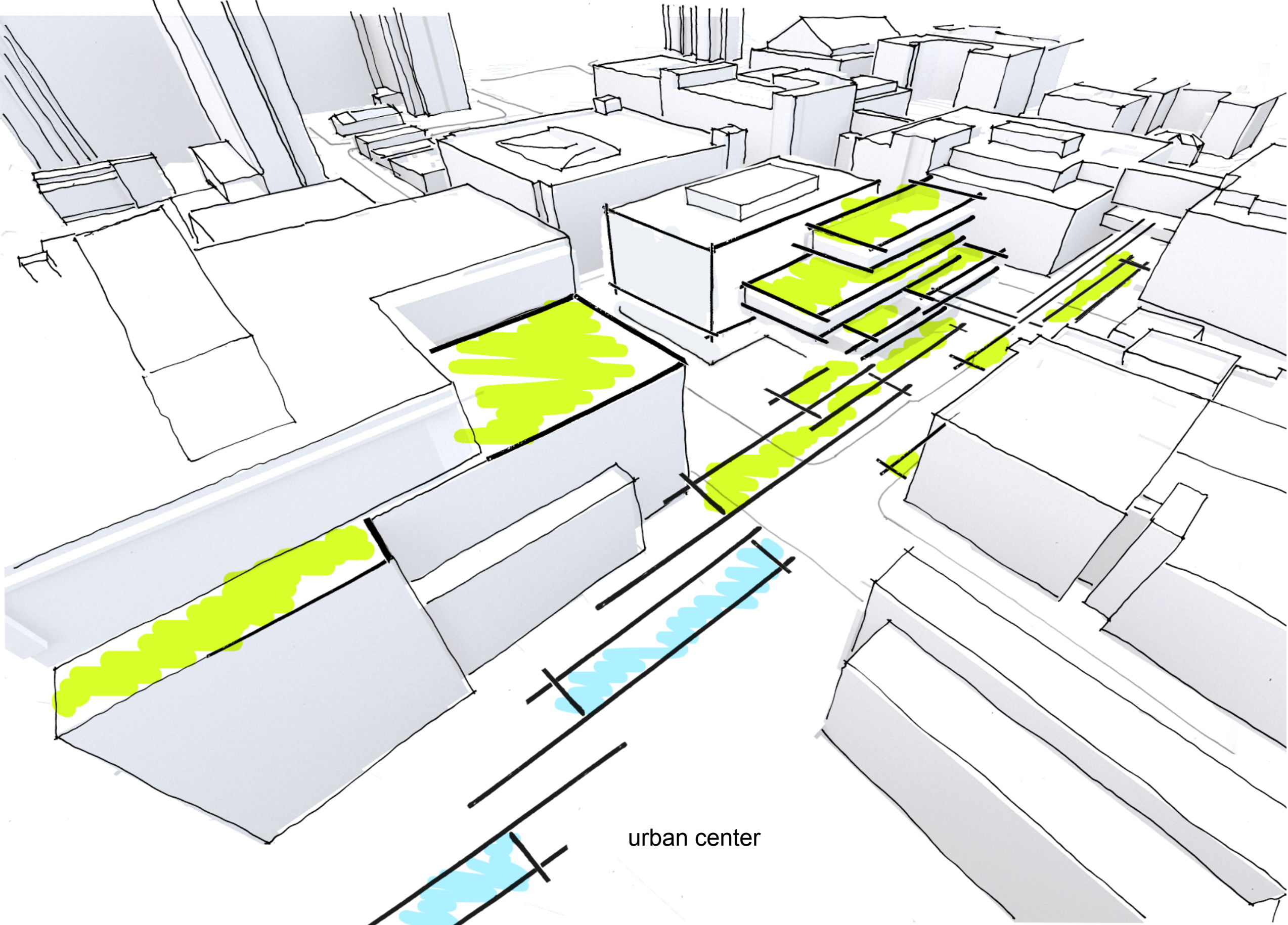
Key

-  Retail Spaces
-  Parks
-  Light Rail

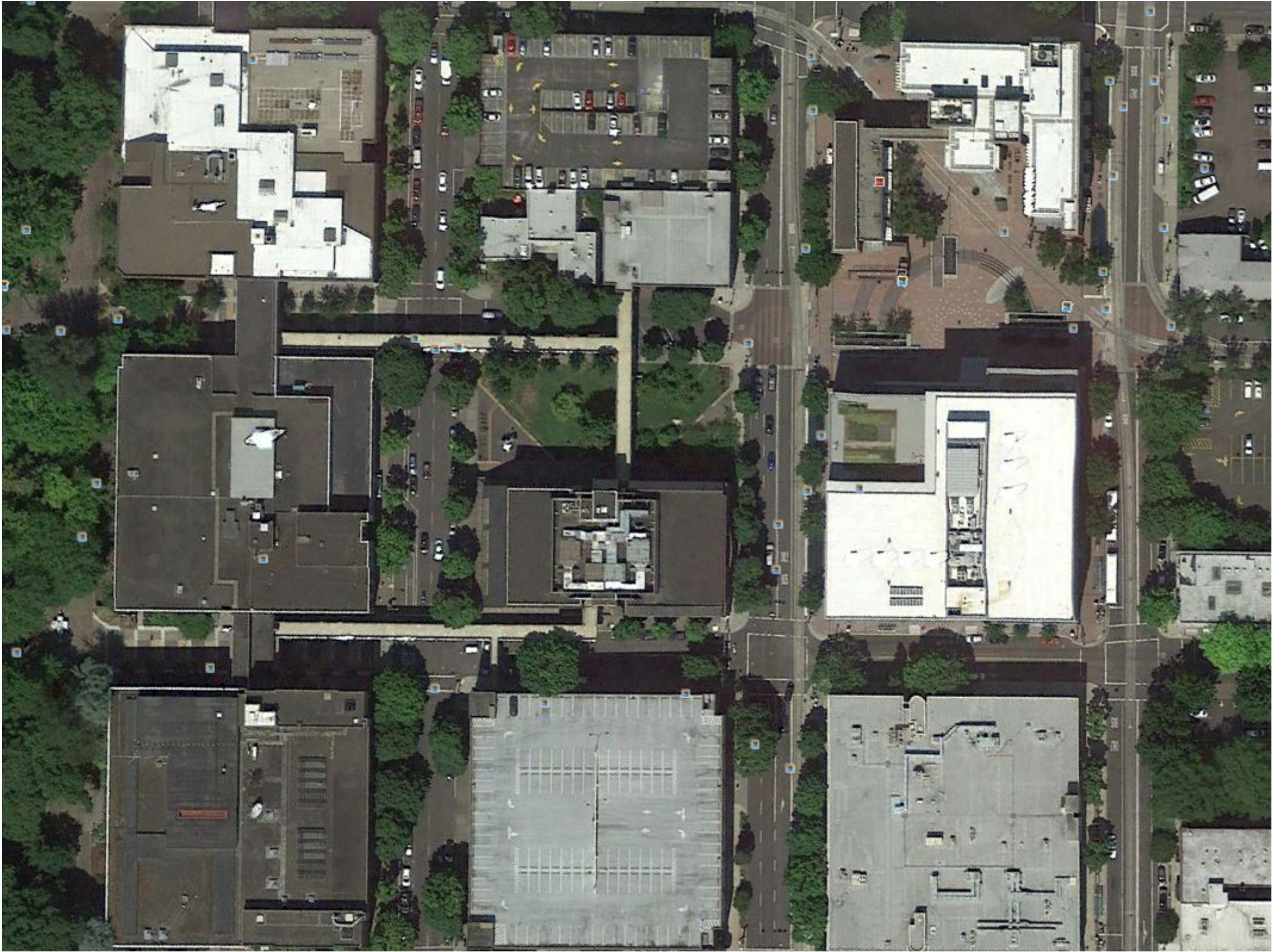




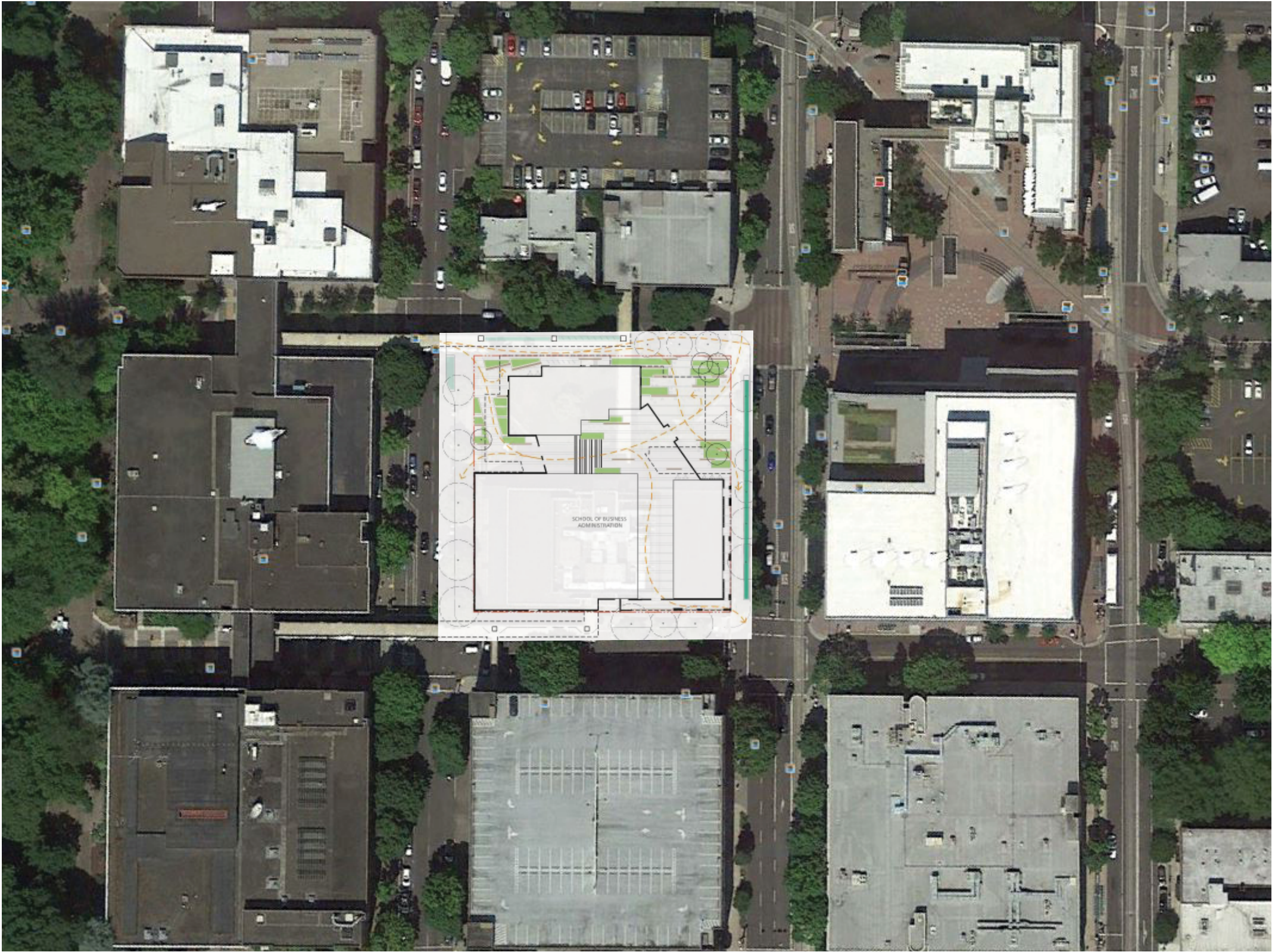




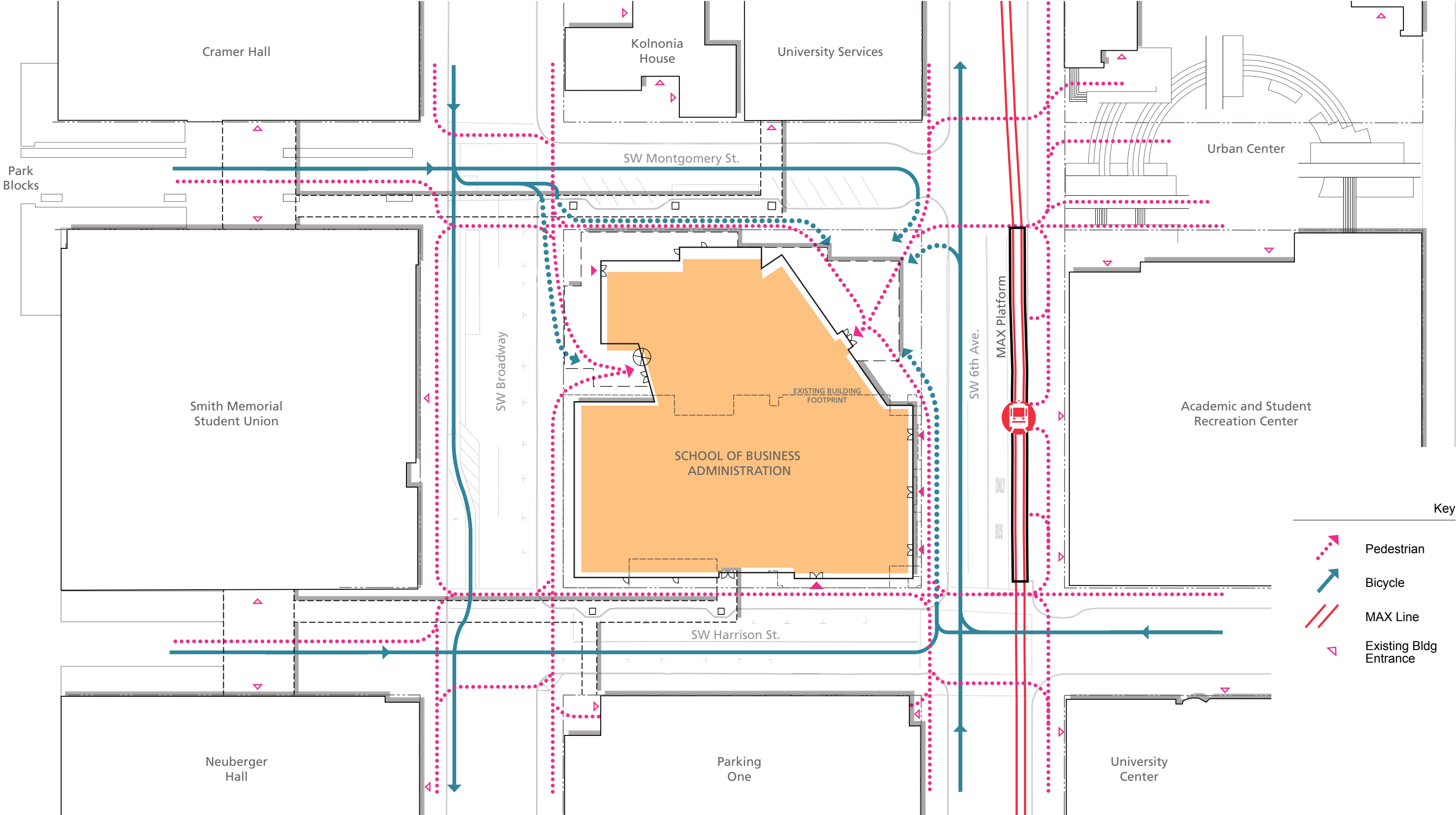
urban center



Aerial
with proposed scheme

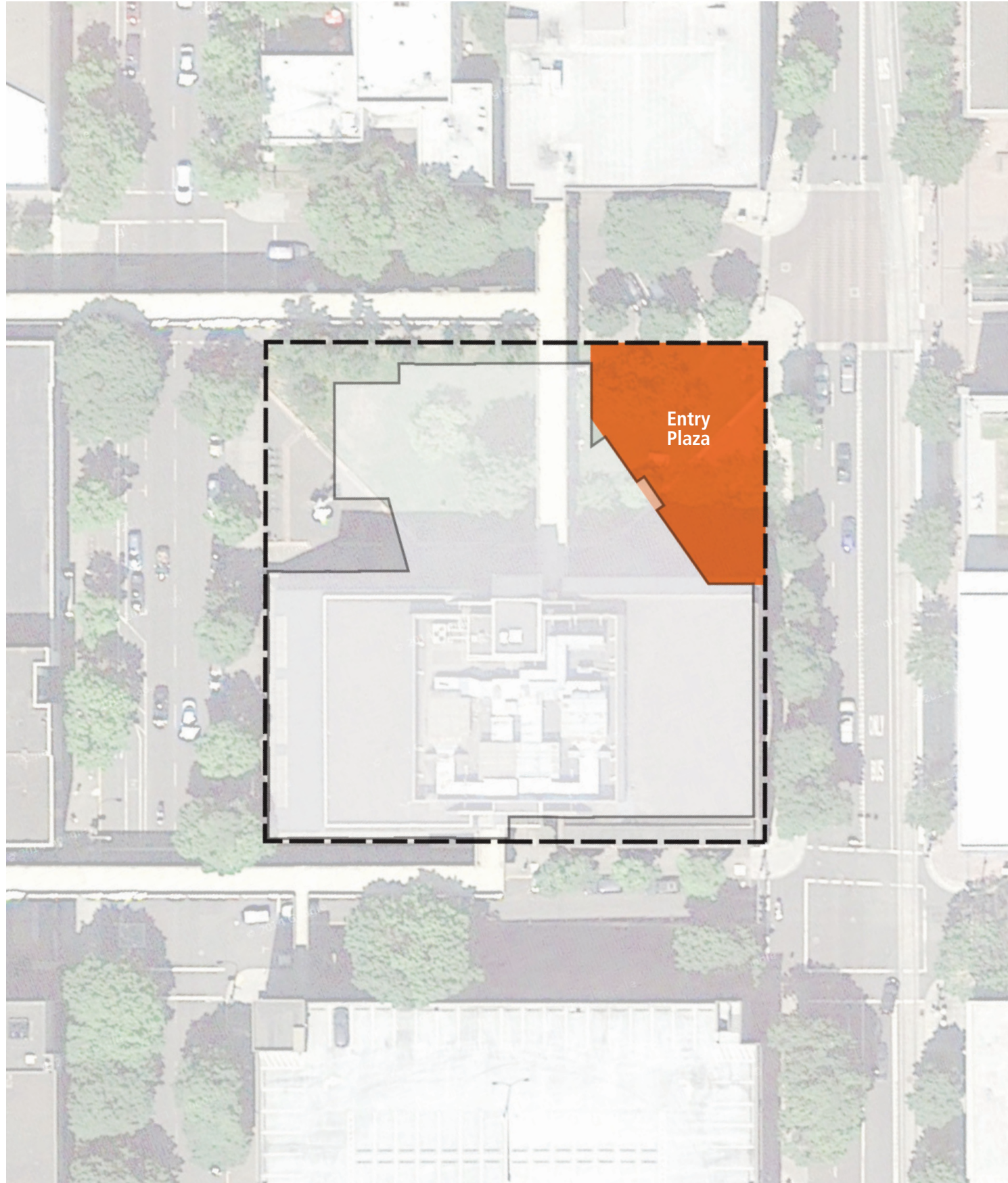


Site Circulation

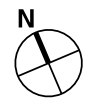


Key

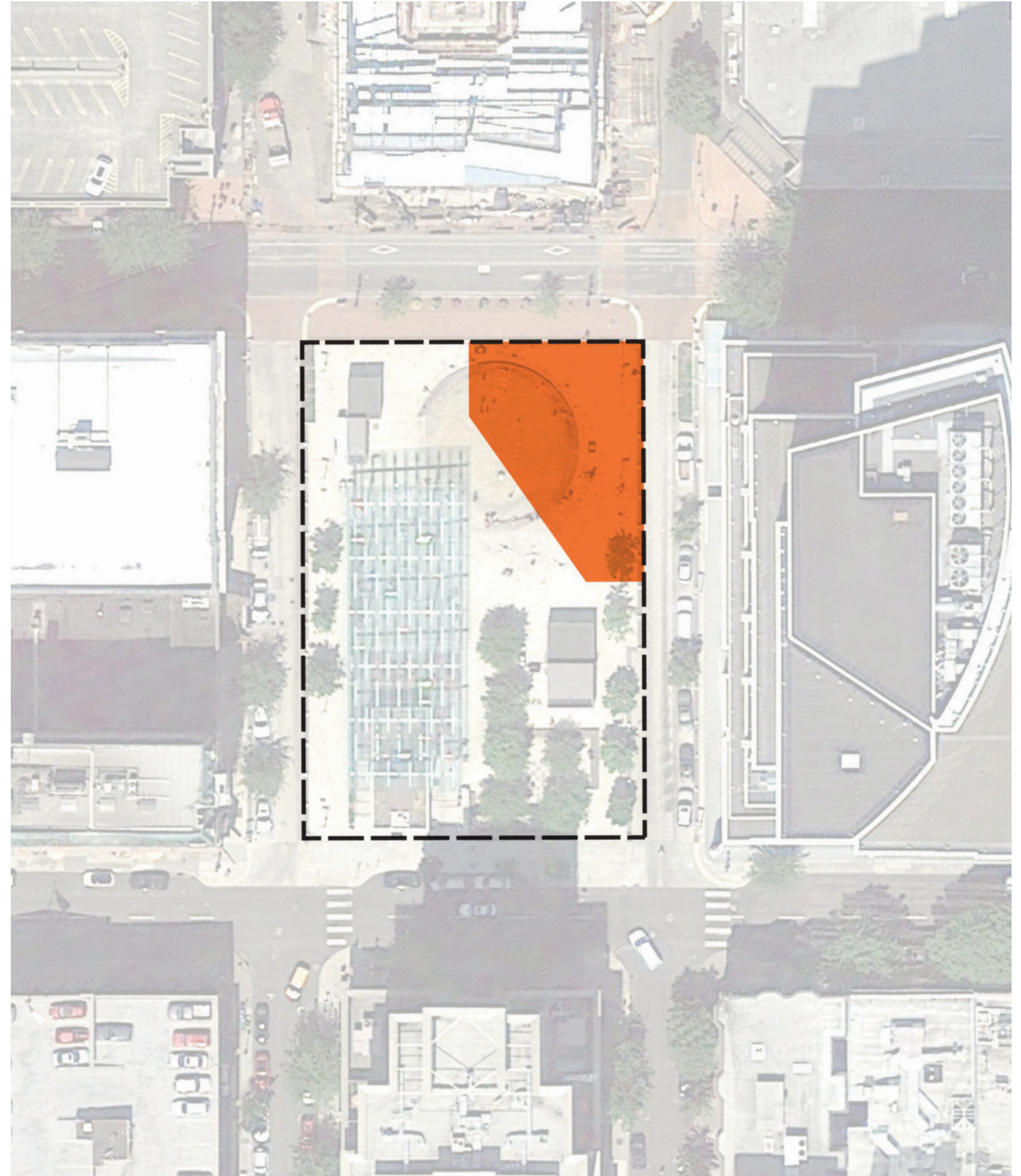
- Pedestrian
- Bicycle
- MAX Line
- Existing Bldg Entrance



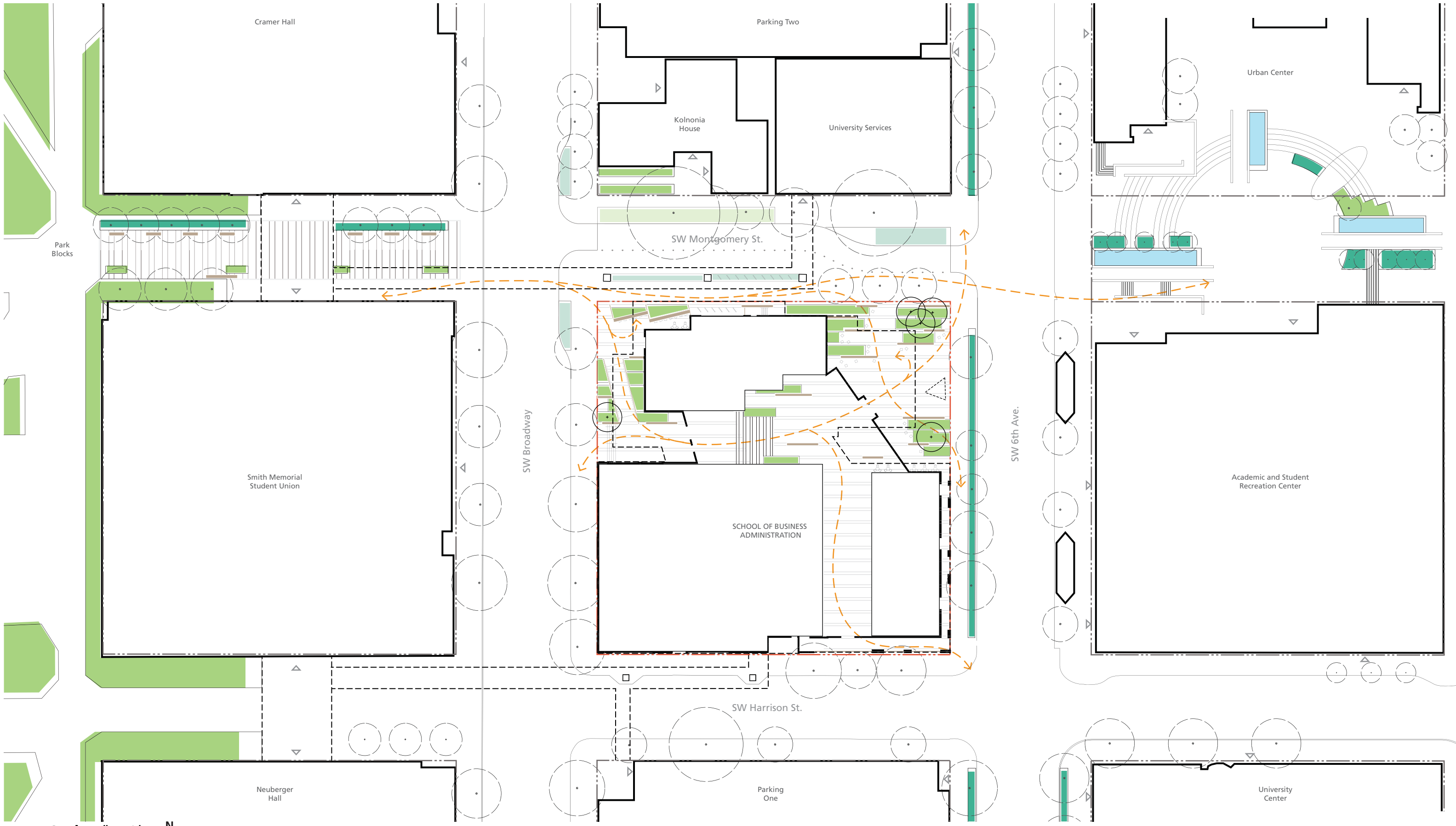
Scale 1"=50'



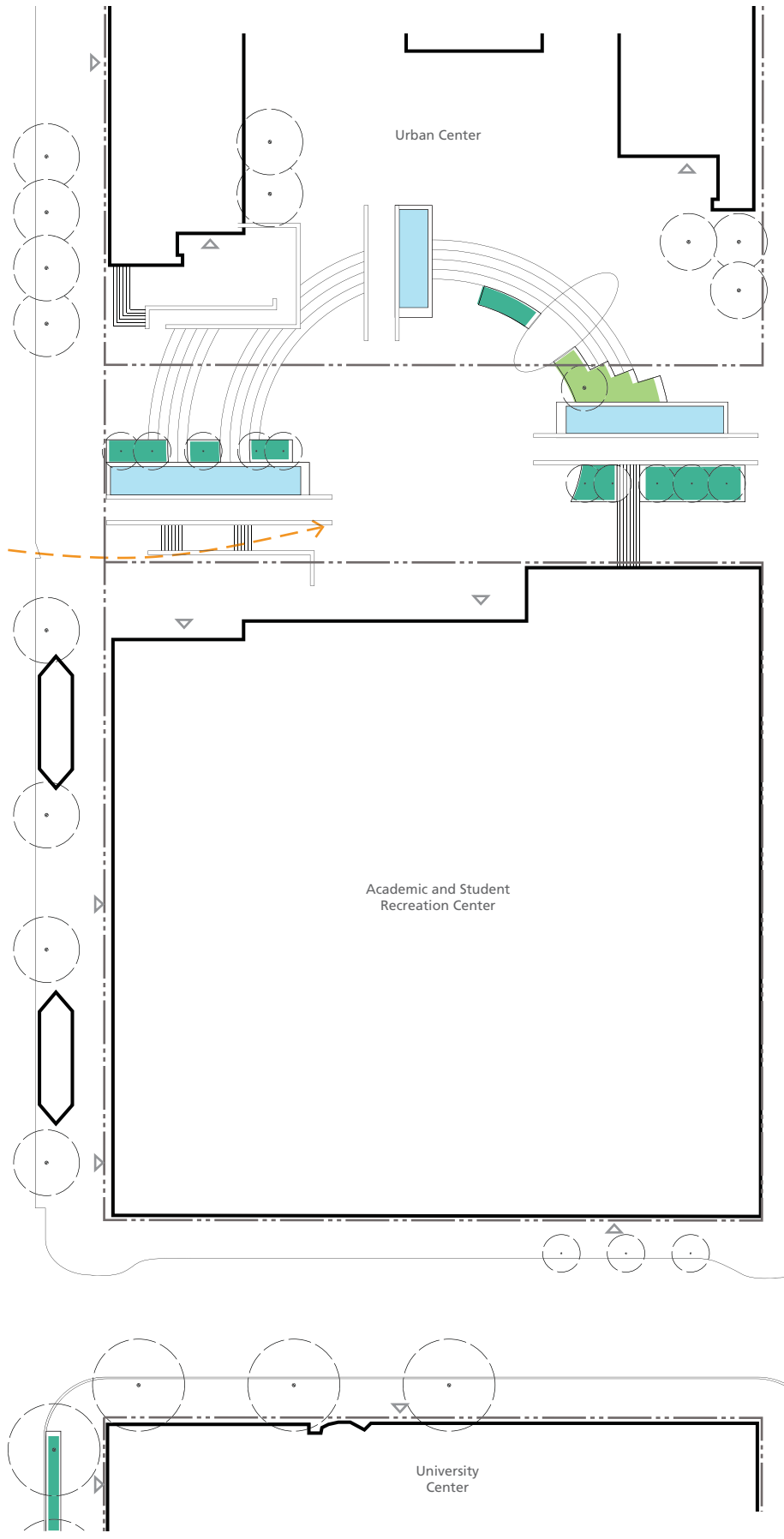
School of Business



Director Park



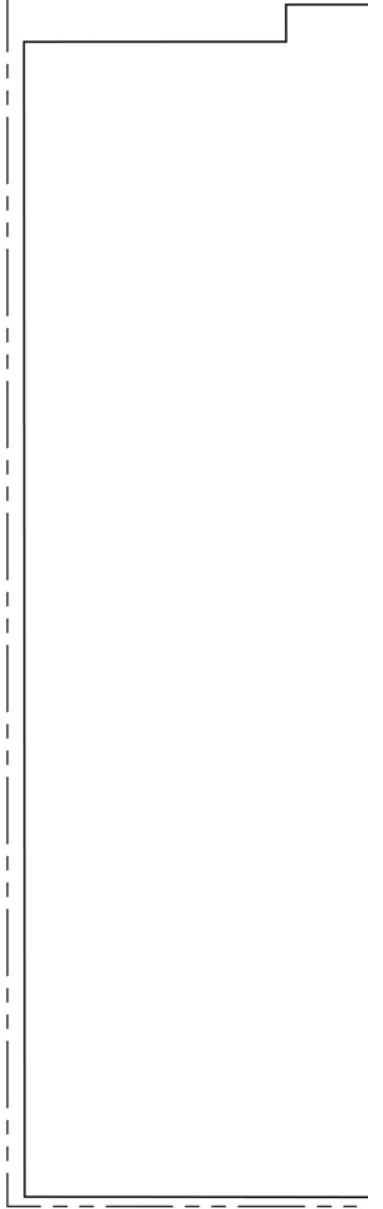
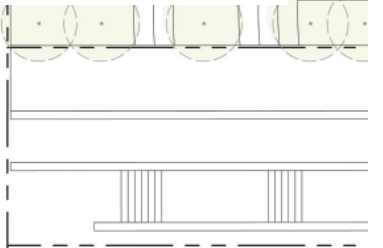
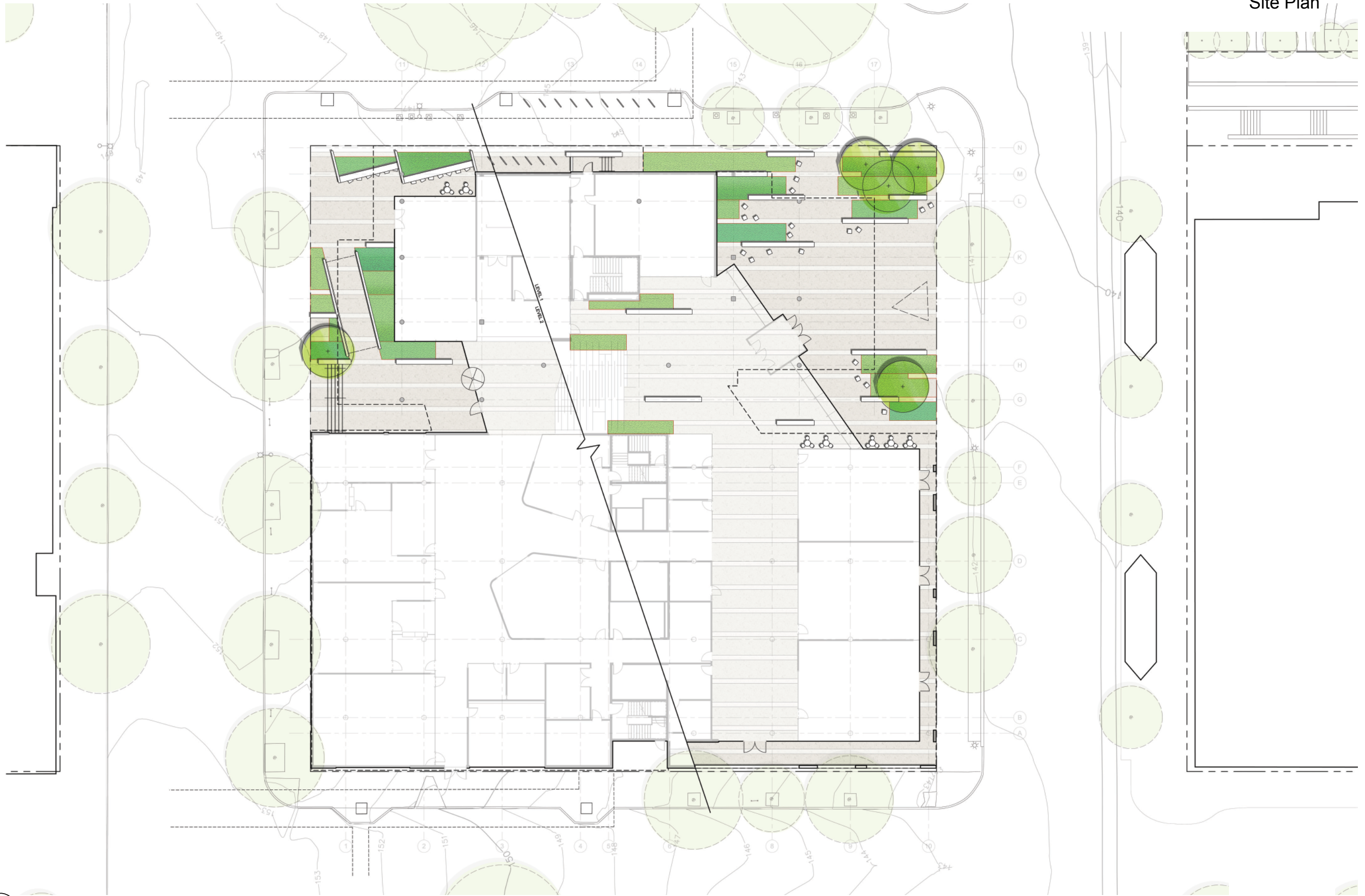
Landscape Concept



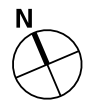
Scale 1"=50'



Site Plan



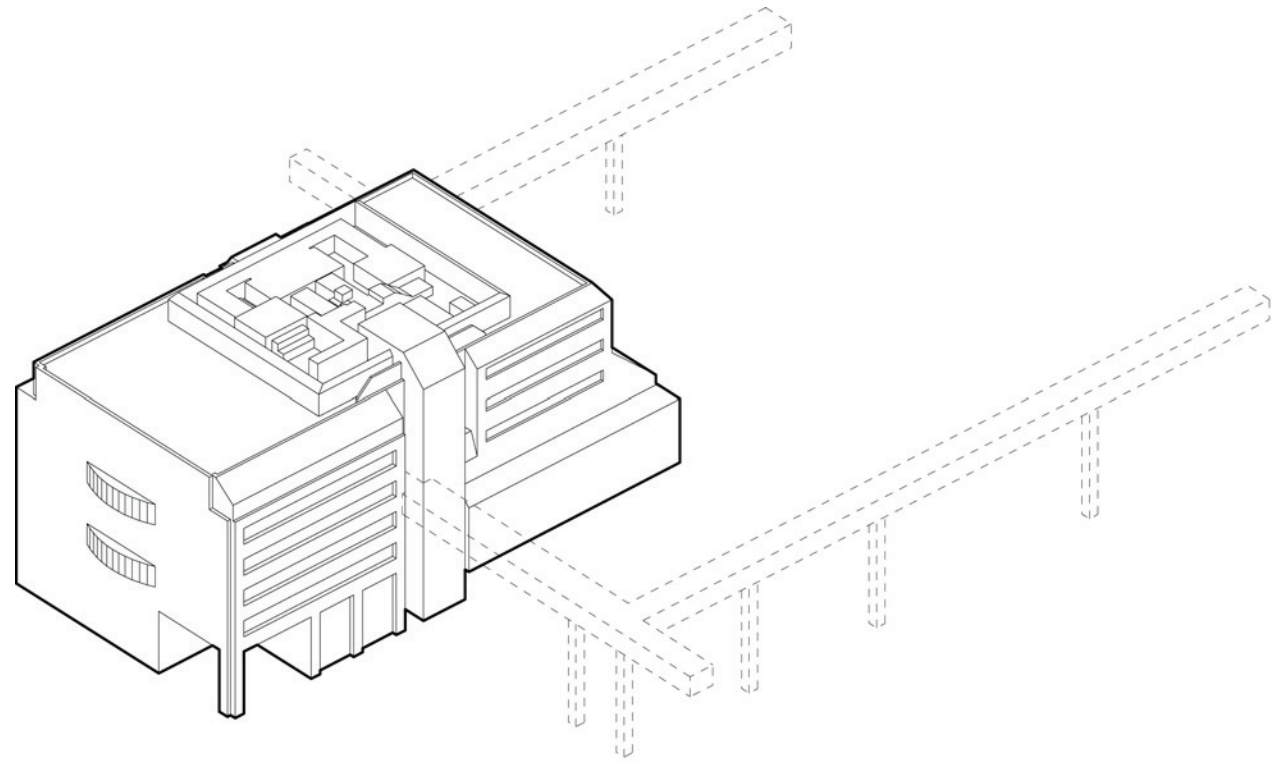
Scale 1"=30'



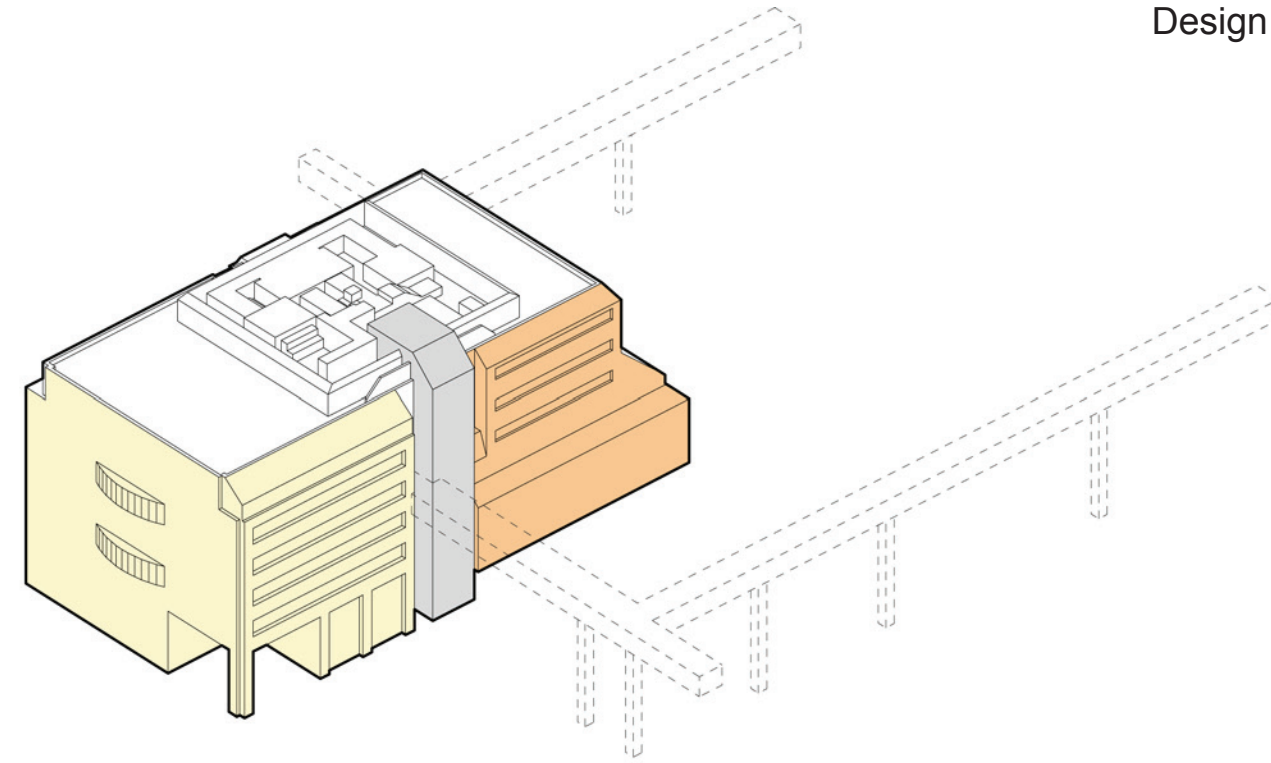




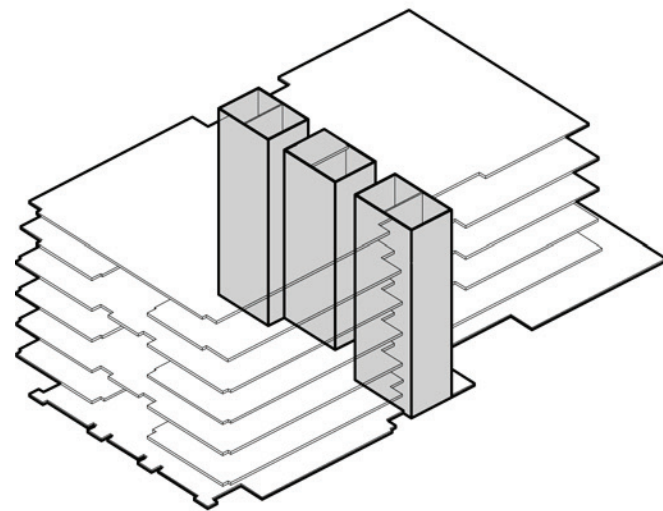




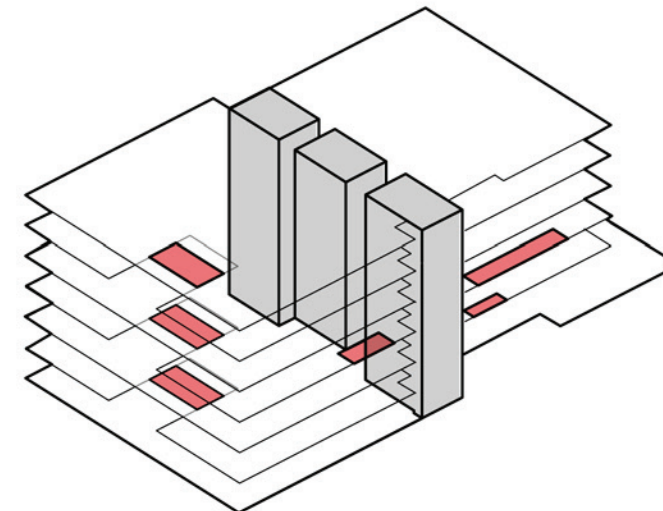
1 Existing Condition



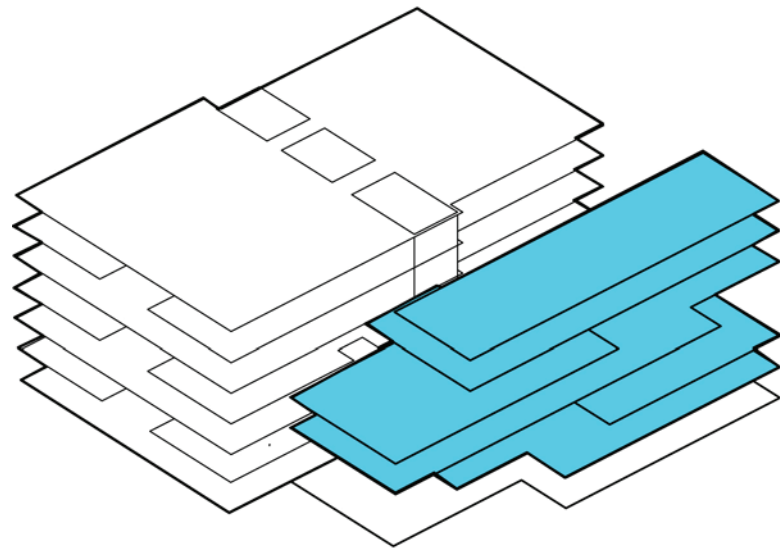
2 Existing Facade Types



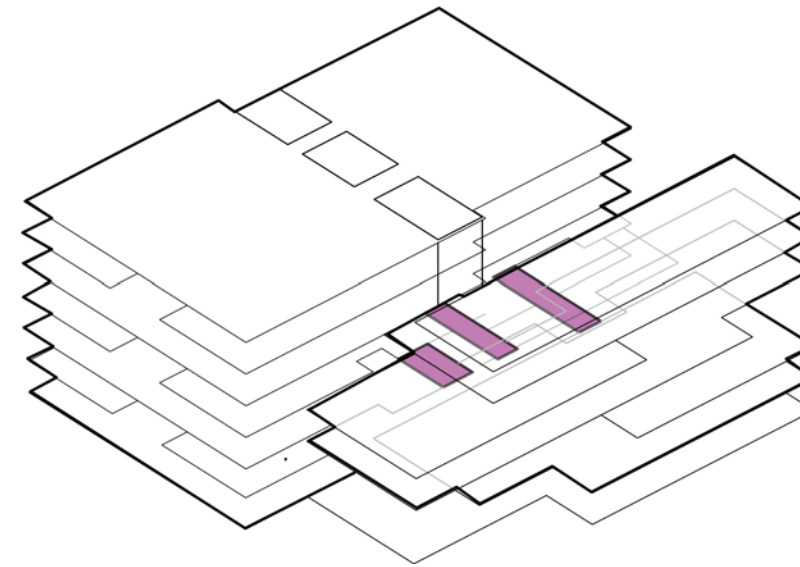
3 Existing Cores & Slabs



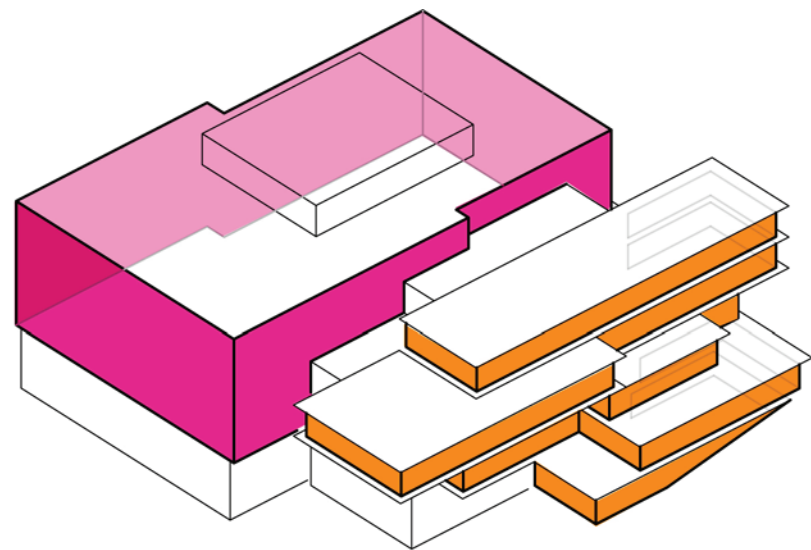
4 Structural Modification



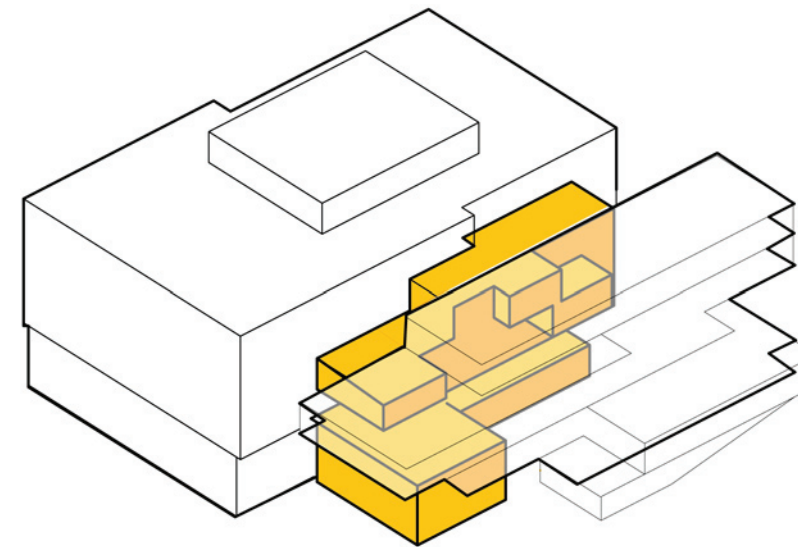
5 *Extending / Adding Floor plates*



6 *Bridge Connections*



7 *Articulate Two Distict Forms*



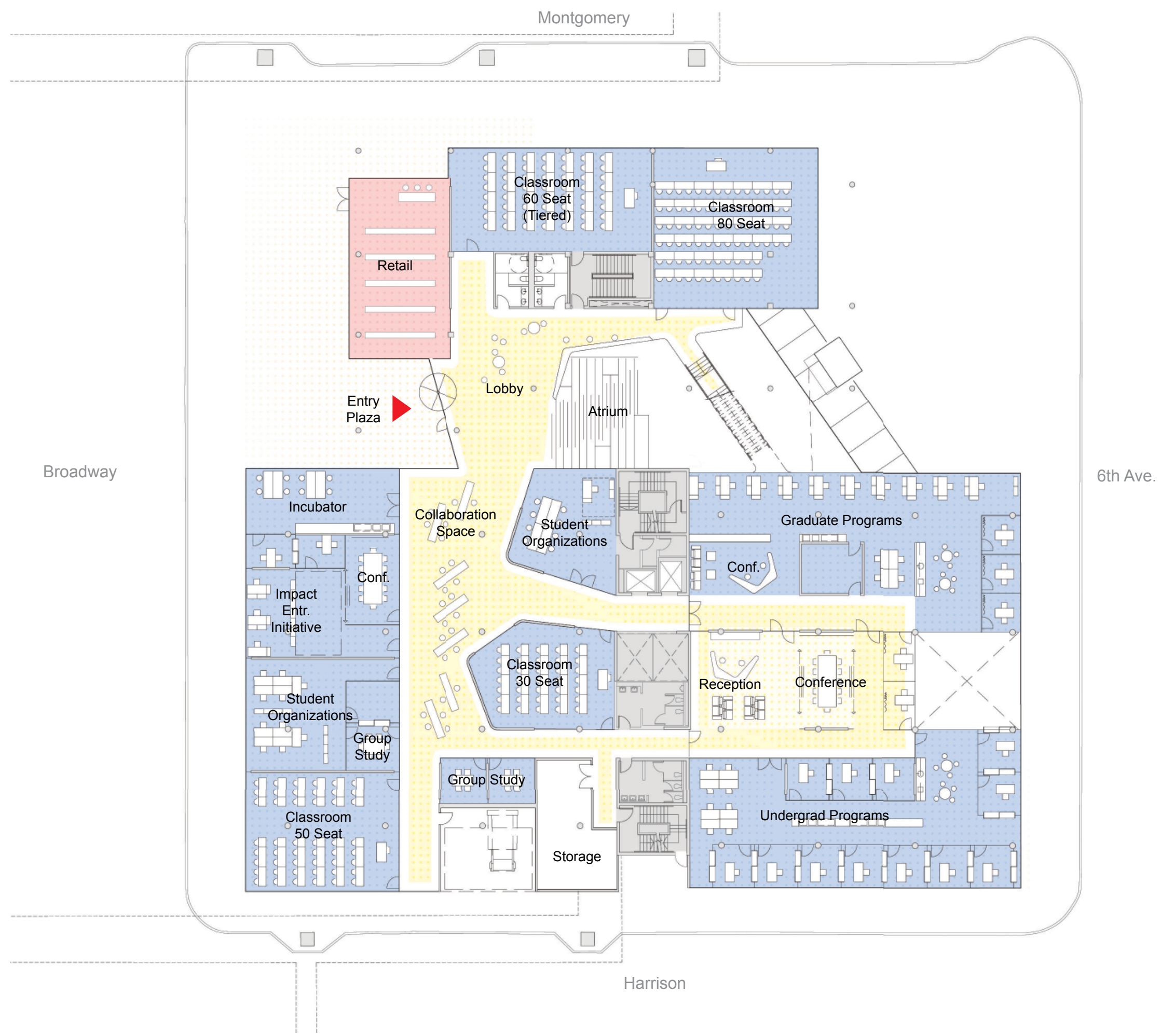
8 *Atrium*

Program Organization
Level 1 Plan



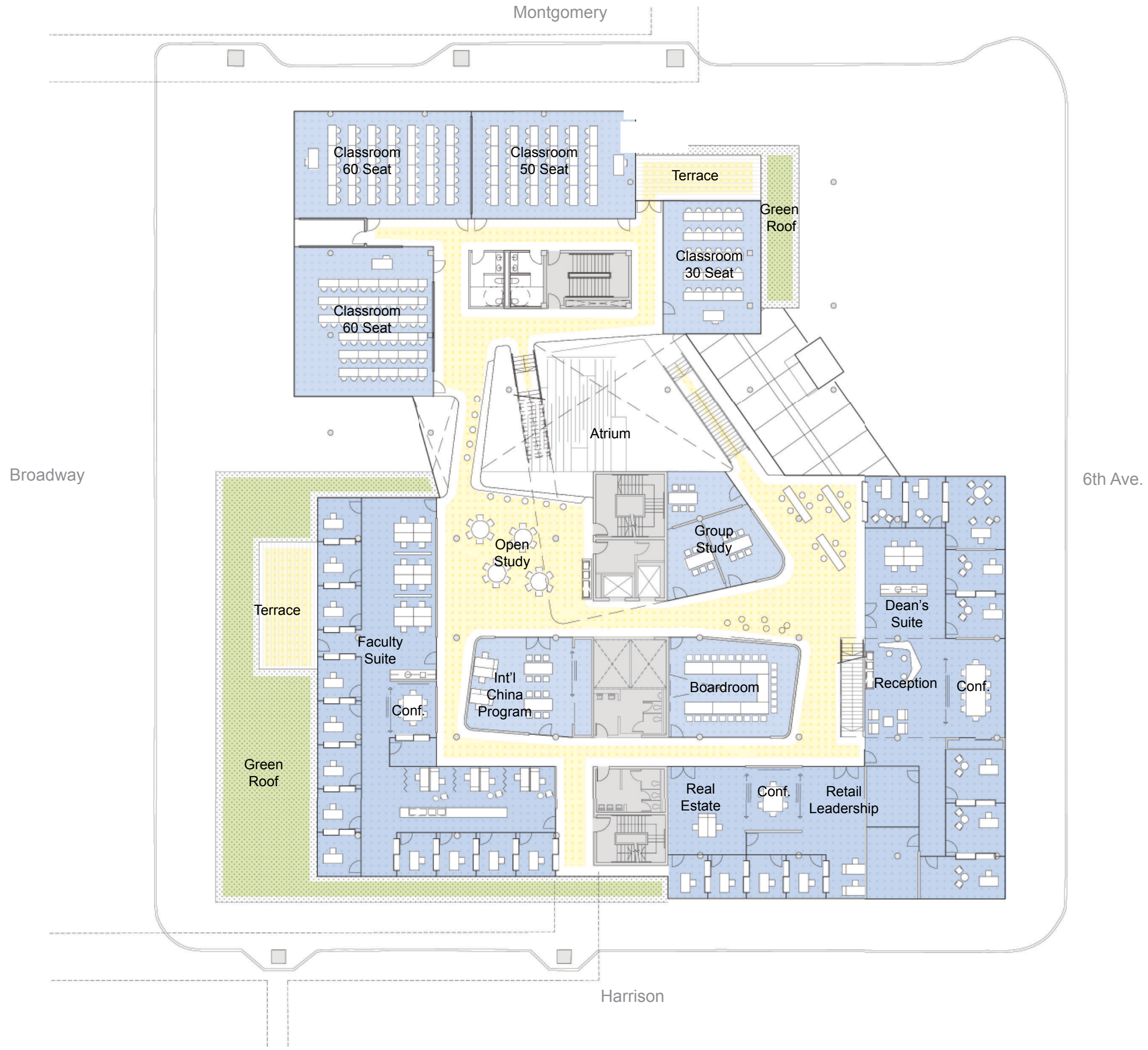
- Key
- ▲ Entry
 - Retail
 - SBA
 - Office of Int'l Affairs
 - Circulation
 - Green Roof
 - Service Core

Program Organization
Level 2 Plan



- Key
- ▲ Entry
 - Retail
 - SBA
 - Office of Int'l Affairs
 - Circulation
 - Green Roof
 - Service Core

Program Organization
Level 3 Plan



- Key
- ▲ Entry
 - Retail
 - SBA
 - Office of Int'l Affairs
 - Circulation
 - Green Roof
 - Service Core

Program Organization
Level 4 Plan



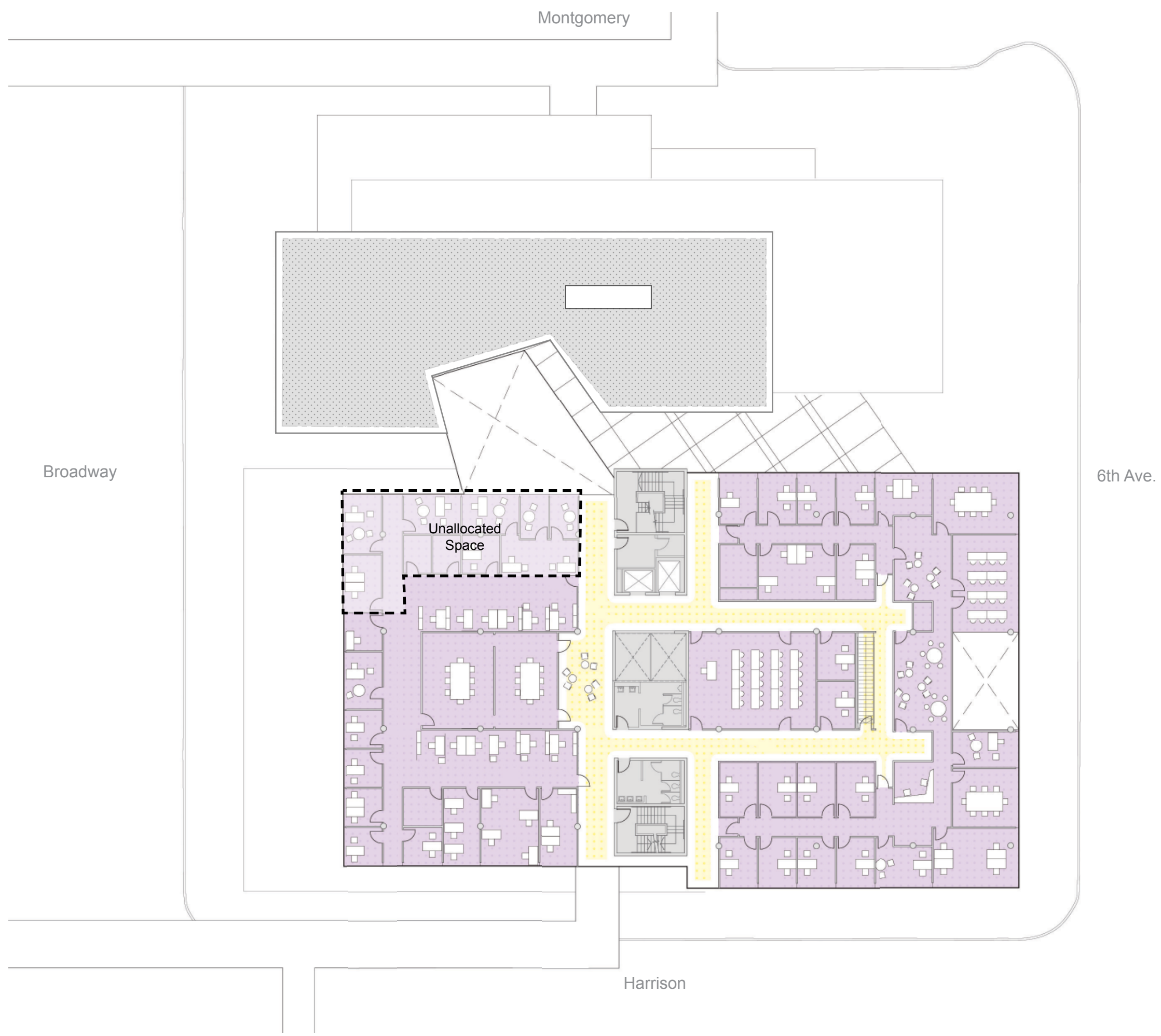
- Key
- ▲ Entry
 - Retail
 - SBA
 - Office of Int'l Affairs
 - Circulation
 - Green Roof
 - Service Core

Program Organization
Level 5 Plan

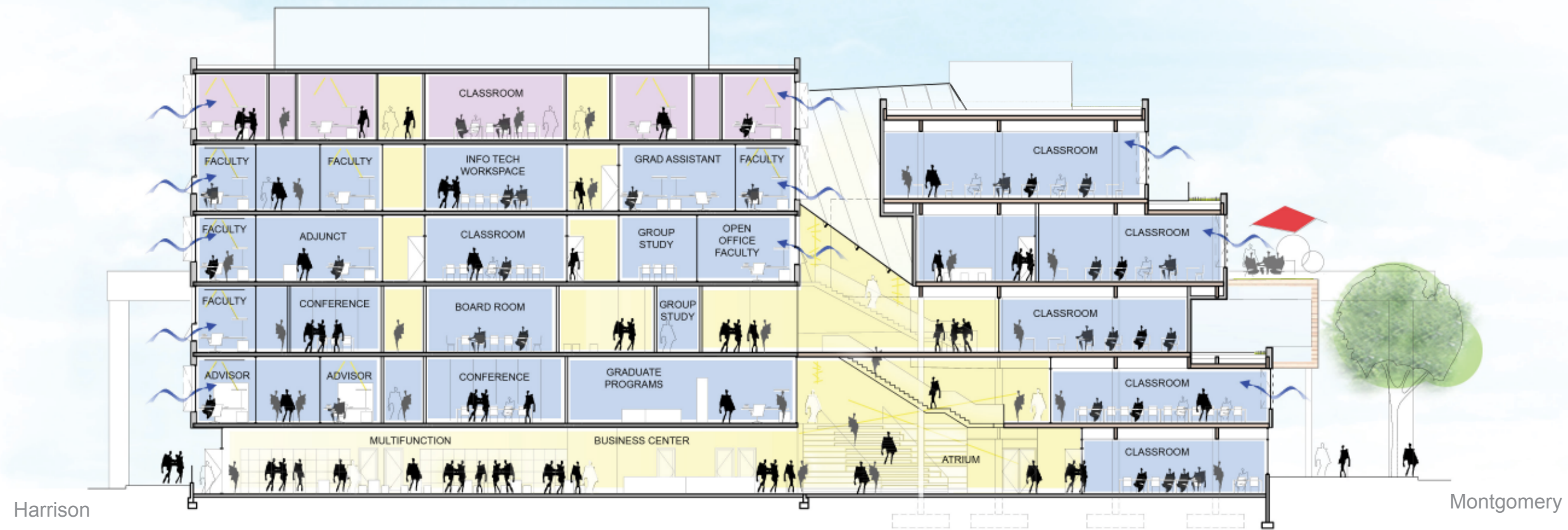
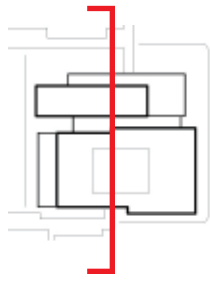


- Key
- ▲ Entry
 - Retail
 - SBA
 - Office of Int'l Affairs
 - Circulation
 - Green Roof
 - Service Core

Program Organization
Level 6 Plan

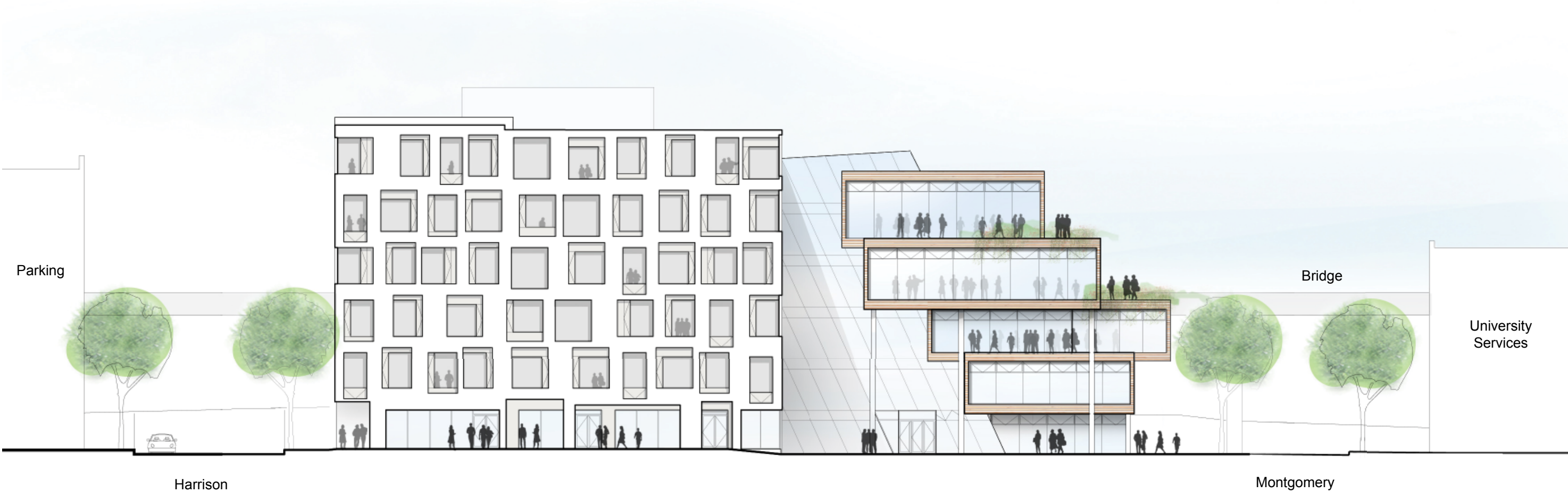


- Key
- Entry
 - Retail
 - SBA
 - Office of Int'l Affairs
 - Circulation
 - Green Roof
 - Service Core



North-South Section

Elevation Studies
6th Avenue Elevation
Southeast Facade



Elevation Studies
Harrison Street Elevation
Southwest Facade

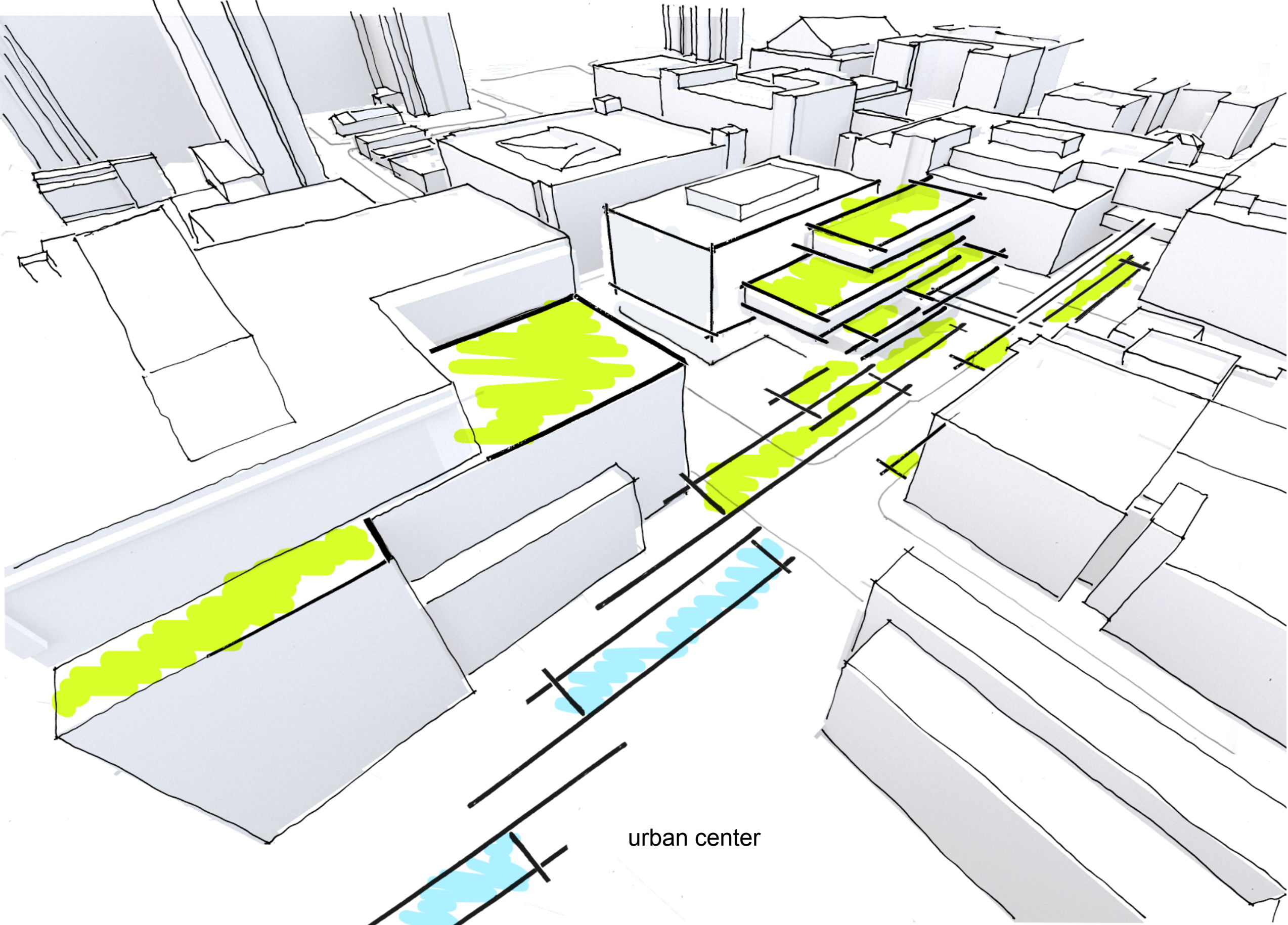


Elevation Studies
Broadway Elevation
Northwest Facade



Elevation Studies
Montgomery Street Elevation
Northeast Facade





urban center



Portland State University- School of Business Administration Renovation & Expansion

Portland State University is renewing and consolidating its existing home for the School of Business Administration, one of its most important academic programs. The current facility is located on Harrison Street and 6th avenue. By locating an expansion on the existing SBA site and reusing the existing structure, the new facility will be particularly symbolic of the School's international prominence in sustainability.

the architectural aspirations for the project are as follows:

- To clearly convey the urban identity of the university and the sustainability focus of the School of Business;
- To be architecturally significant building with beautiful, inspiring spaces.
- To strengthen the connections with the surrounding business community
- To facilitate a vibrant student community that encourages learning

the project will provide a building program developed with the following goals:

- Provide enough teaching space to house all SBA classes.
- Increase faculty space to serve faculty and graduate assistants, while allowing for future growth.
- Increase the social and interaction space within the building to better serve students, faculty and guests.
- Create visible, expandable centers that enhance the school's ability to directly contribute to the food, activewear and outdoor gear, and real estate industries, and to increase the success of the region's many small businesses.
- Design for the greatest flexibility of space to adjust for shifting needs over time.
- Design the new expansion to seamlessly integrate into the existing building structures.
- The new design and appearance shall inspire visitors as they approach the building by foot or vehicle.
- A significant portion of the renovated building and expansion's ground floor shall be available for retail space. Strategic retail partners will be sought to enhance the symbiotic relationship between the business school and local business community.

The two major components of the project are:

1) Construction of a new 31,600 (+/-) square feet addition to the North end of the building that will fully utilize the project site, create a new dramatic entrance to

2) Modernization and upgrade of the existing structure that is currently occupied by SBA and the Graduate School of Education, including significant deferred maintenance. Construction will provide additional classroom seats, four center spaces (Center for real estate, Center for retail leadership, Center for Global leadership and Sustainability, Center for innovation and entrepreneurship), and 22 student break-out rooms

Situated close to the heart of dynamic downtown the Portland State University School of Business Administration is uniquely positioned to integrate with the city's rich network of public open space and diverse urban uses, and to re-invigorate a key site linking the traditional heart of the PSU campus around the Park Blocks to the West with the new Urban Center and its related transportation networks to the east. The site creates an opportunity to further the development of a pedestrian-friendly and transparent corridor along Broadway, and to create an open and welcoming face for the SBA towards the City of Portland and the business community.

With a gross area for the existing building of approximately 100,000 square feet, and an addition of roughly 31,600 square feet, the new design for the SBA facility would be constructed to the same height as the existing building while the proposed addition would occupy approximately half of the remaining site area, suggesting the project has great potential for erecting a significant new addition with the possibility of preserving valuable outdoor urban space as well.

The project will also add a new entry on Harrison. The resulting lobby space will help integrate the retail into the fabric of the building while also invigorating the pedestrian character along Harrison.

