



2035 Comprehensive Plan *Overview of the Proposed Draft*

Planning and Sustainability Commission
July 22, 2014



Bureau of Planning and Sustainability
Innovation. Collaboration. Practical Solutions.



What is the Comprehensive Plan?

- State-mandated, long-range plan
- Prepare for and manage growth
- Plan and coordinate major investments
- Guide decision-making on land use, transportation, parks, sewer and water systems, natural resources, etc.



Periodic Review

- Task 1- Community Involvement Plan (acknowledged 2010)
- Task 2 – Inventory and Analysis (acknowledged 2014)*
- Task 3 – Consideration of Alternatives (commission reviewed Growth Scenario Report in 2013)
- Task 4 – Policy Choices ← we are here now (The Plan! – Goals and Policies, Map, Projects)
- Task 5 – Implementation (coming in 2015)

* The EOA has been withdrawn and will come back to the PSC in 2014



The facts

- Buildable Lands Inventory (BLI)
- Infrastructure Condition and Capacity
- Housing Needs Analysis
- Economic Opportunities Analysis (EOA)*
- Natural Resources Inventory (NRI)

* The EOA has been withdrawn and will come back to the PSC in 2014



Preparing for growth is smart

Portland today...

- Roughly 260,000 households
(over 600,000 people)
- Roughly 140,000 jobs

We are Planning for....

- 122,000 new households
- 140,000 new jobs

*Baseline year is 2010, the planning horizon is 2035

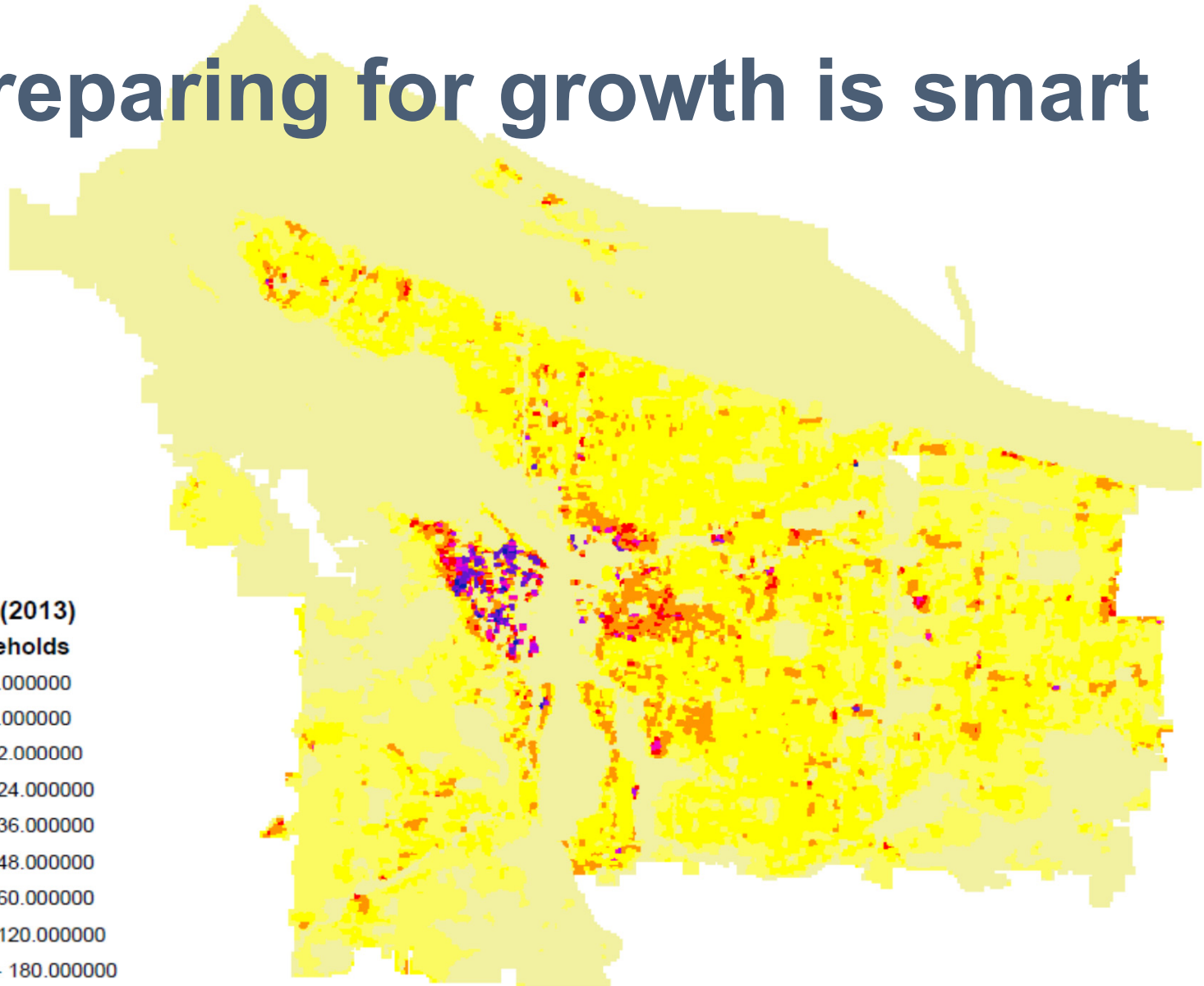
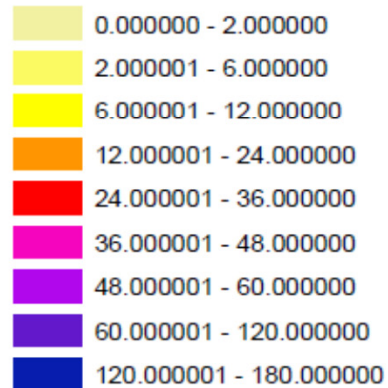


Preparing for growth is smart

Legend

BLI Allocation (2013)

Total 2010 Households

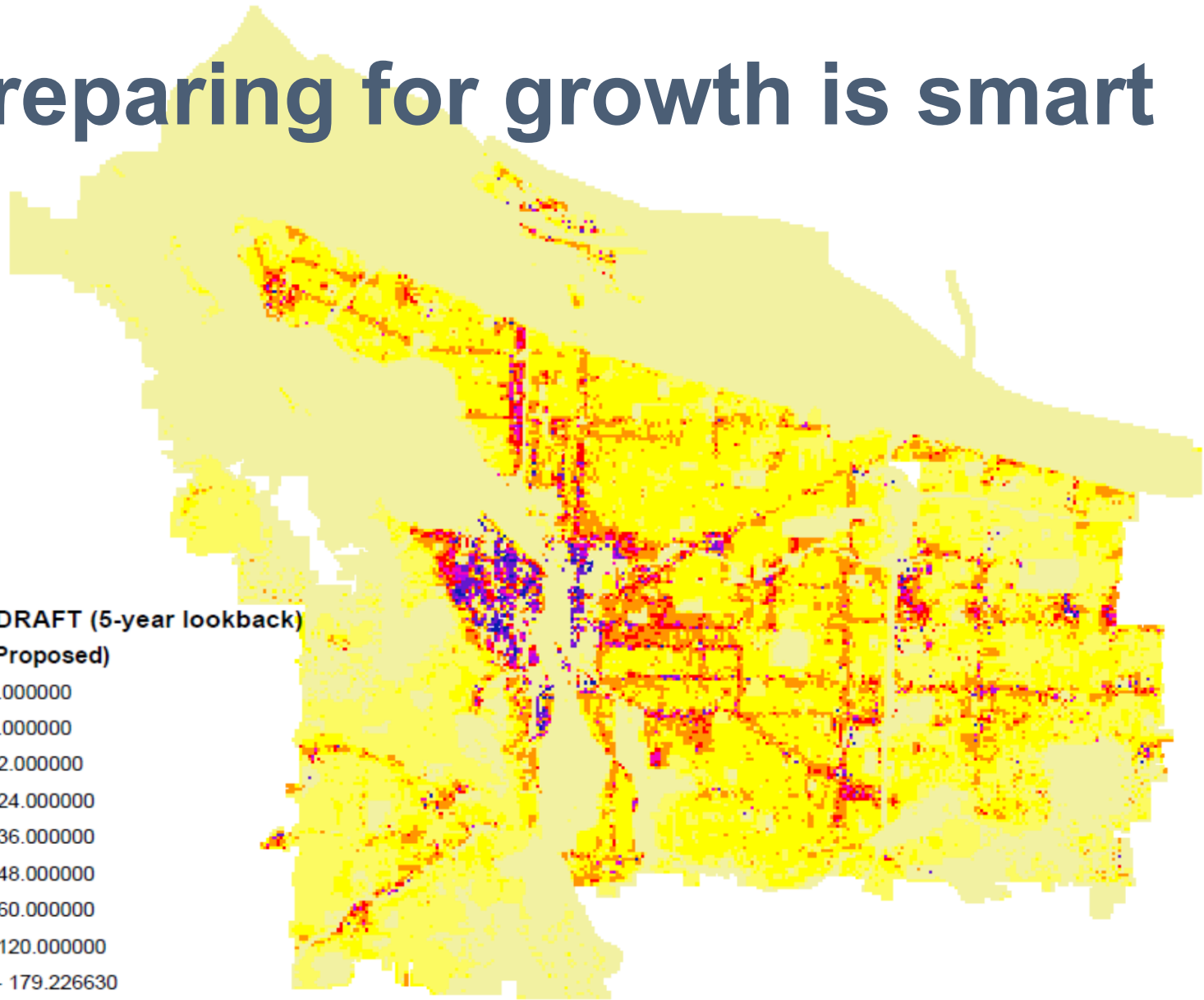
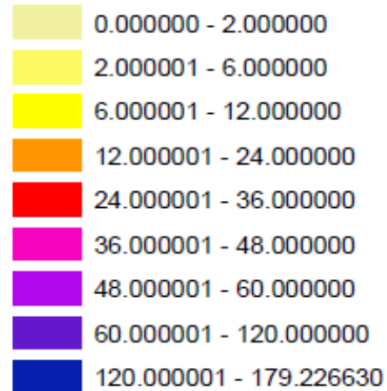


Preparing for growth is smart

Legend

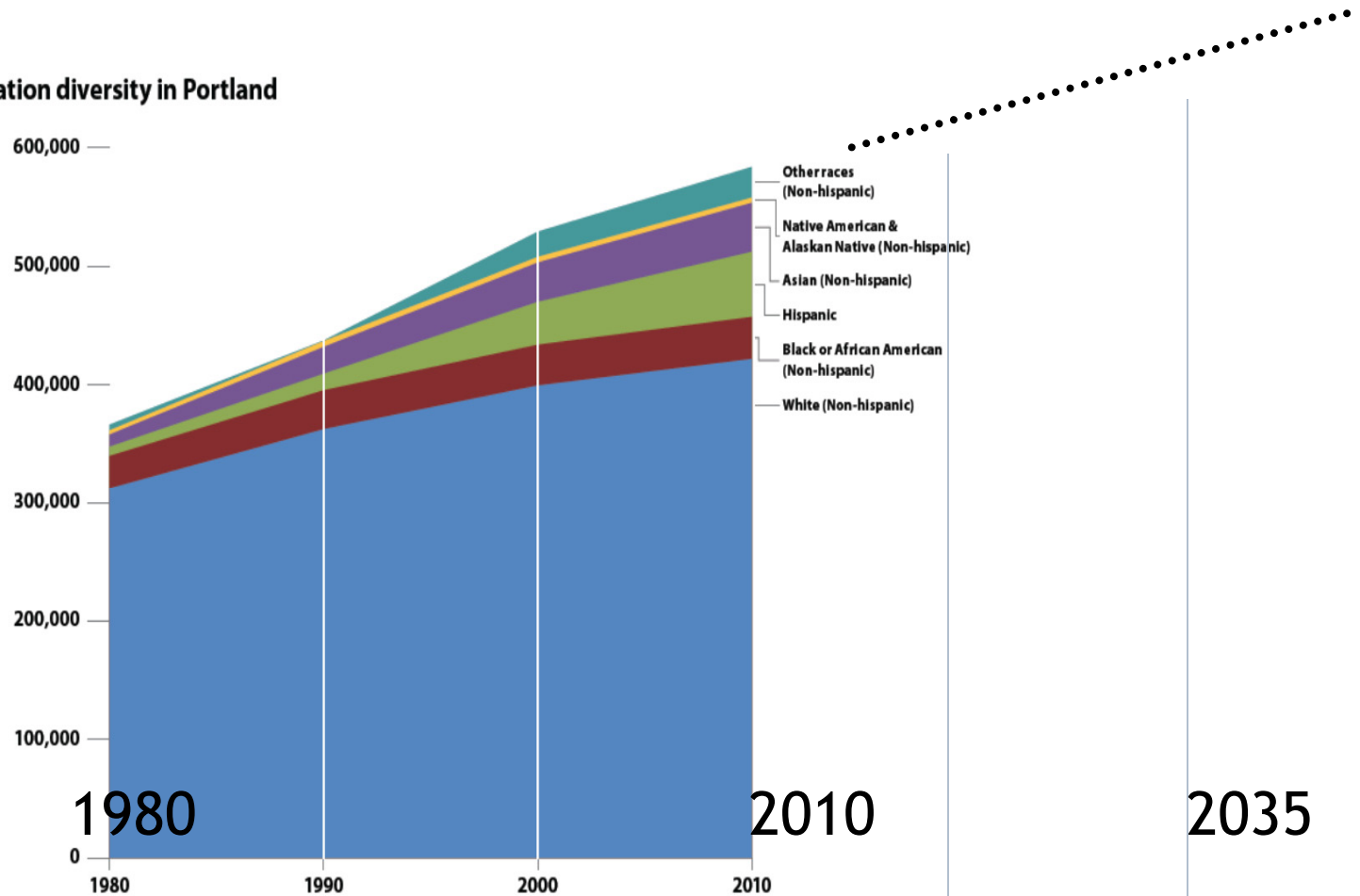
BLI Allocation DRAFT (5-year lookback)

Forecast Units (Proposed)

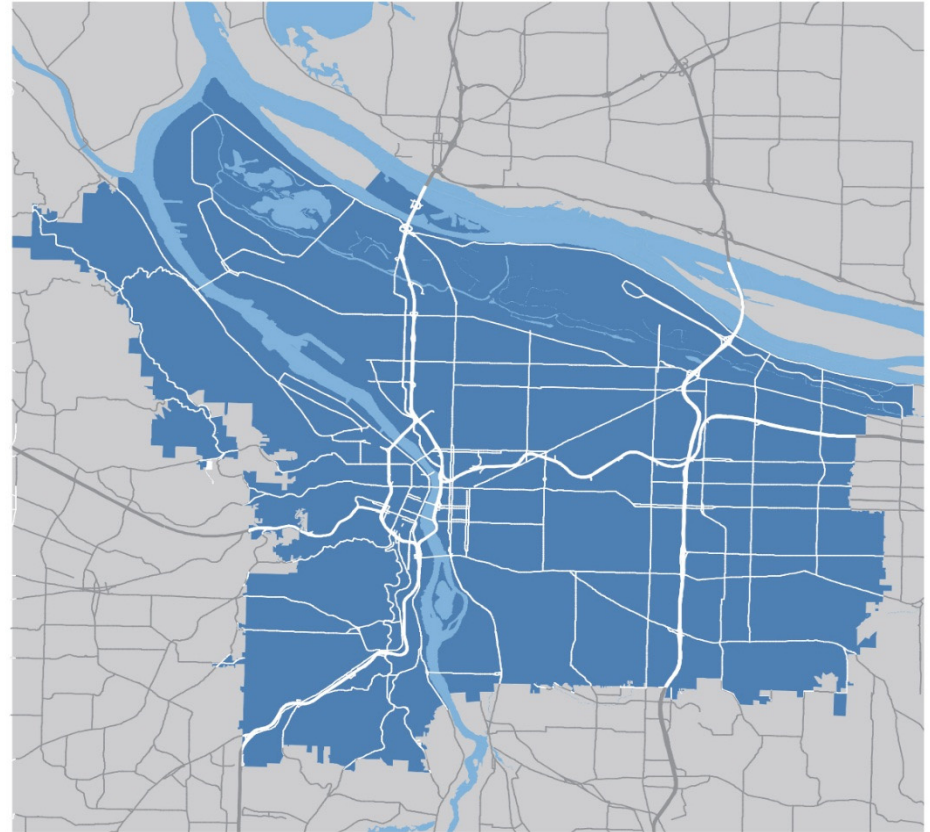
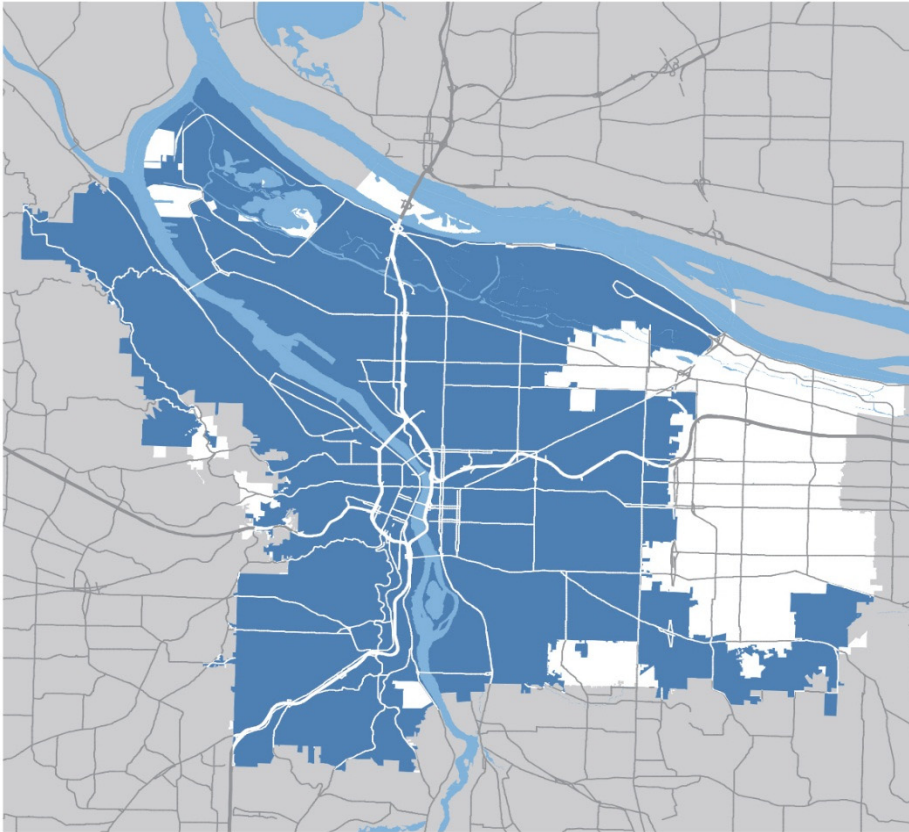


30 Years of Change

Growth in population diversity in Portland



1980 and Today



Bureau of Planning and Sustainability
Innovation. Collaboration. Practical Solutions.



12 Measures of Success

1. Equity and inclusion
2. Resident Satisfaction
3. Educated Youth
4. Prosperous Households
5. Growing Businesses
6. Job Growth
7. Transit and Active Transportation
8. Reduced Carbon Emissions
9. Complete Neighborhoods
10. Healthier People
11. Safer City
12. Healthy Watersheds



Plan Elements

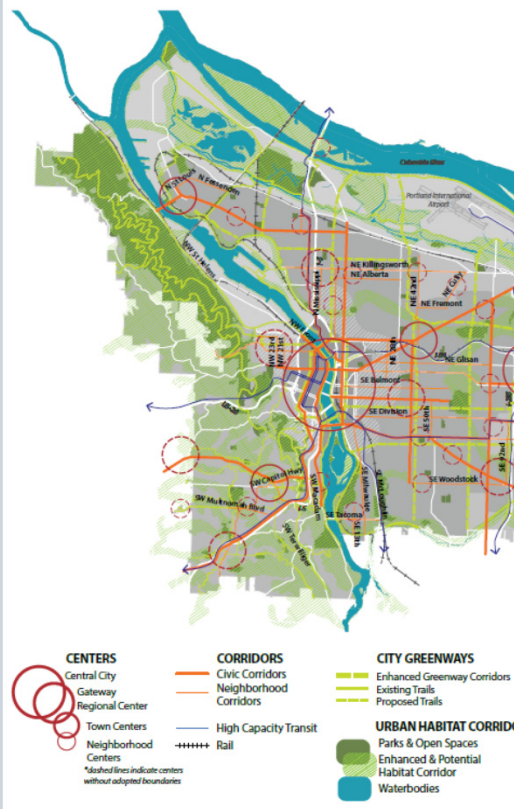
1. Goals and Policies
2. List of Significant Projects
3. Comprehensive Plan Map
4. Portions of the Transportation System Plan (TSP)

+ Citywide Systems Plan (a supporting document)



Plan Elements

URBAN DESIGN FRAMEWORK



... COMPREHENSIVE PLAN UPDATE ...

2035 Comprehensive Plan

Proposed Draft

What's Inside?

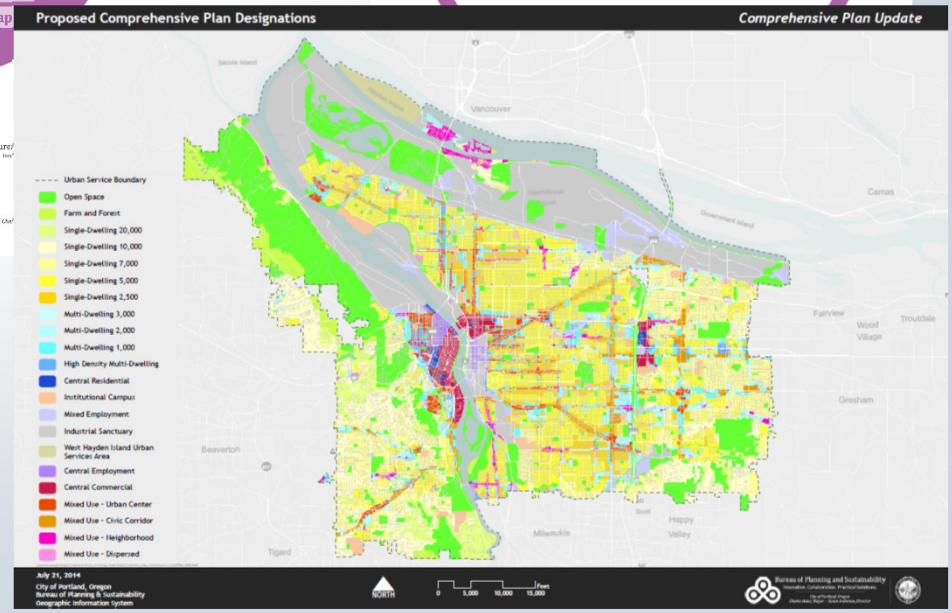
- Introduction
- About the Plan
- Goals and Policies
- List of Significant Projects
- Comprehensive Plan Map
- Glossary

July 2014
 Portland's Comprehensive Plan Update
 For more information, visit:
www.portlandoregon.gov/bps/pdxccomplan

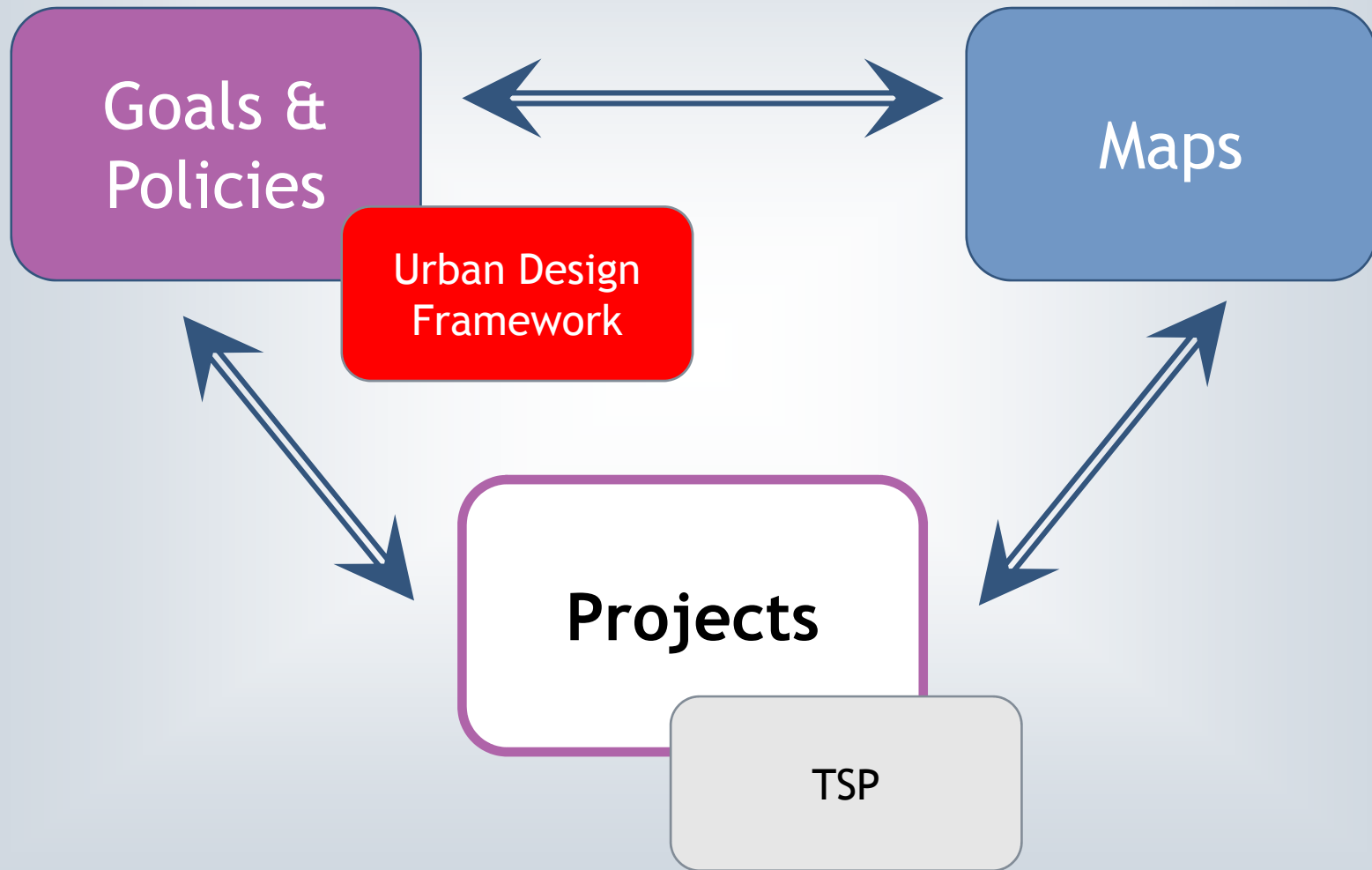
... COMPREHENSIVE PLAN UPDATE ...

Citywide Systems Plan

Proposed Draft



Plan Elements

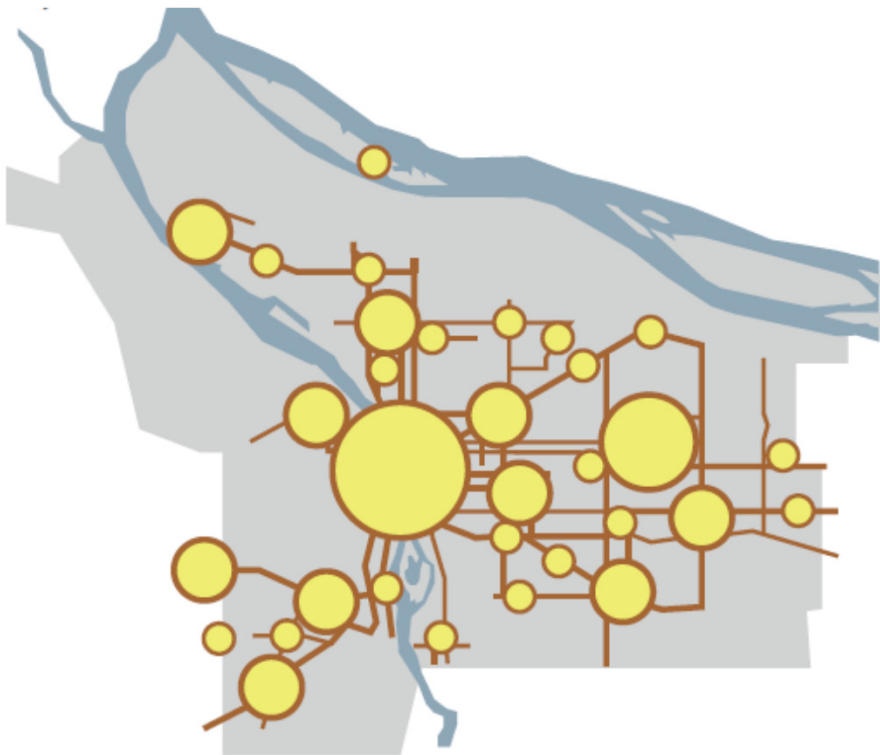


Seven Key Directions

1. Create complete neighborhoods
2. Encourage job growth
3. Create a low-carbon community
4. Protect natural areas and open spaces
5. Provide reliable infrastructure that equitably serves all parts of the city
6. Improve Resiliency
7. One size does not fit all



Complete Neighborhoods



What Makes a Complete Neighborhood?



Basic Public Services



Parks & Nature



Healthy Food



Businesses & Amenities



Watershed Health



Social Connections



Active Transportation



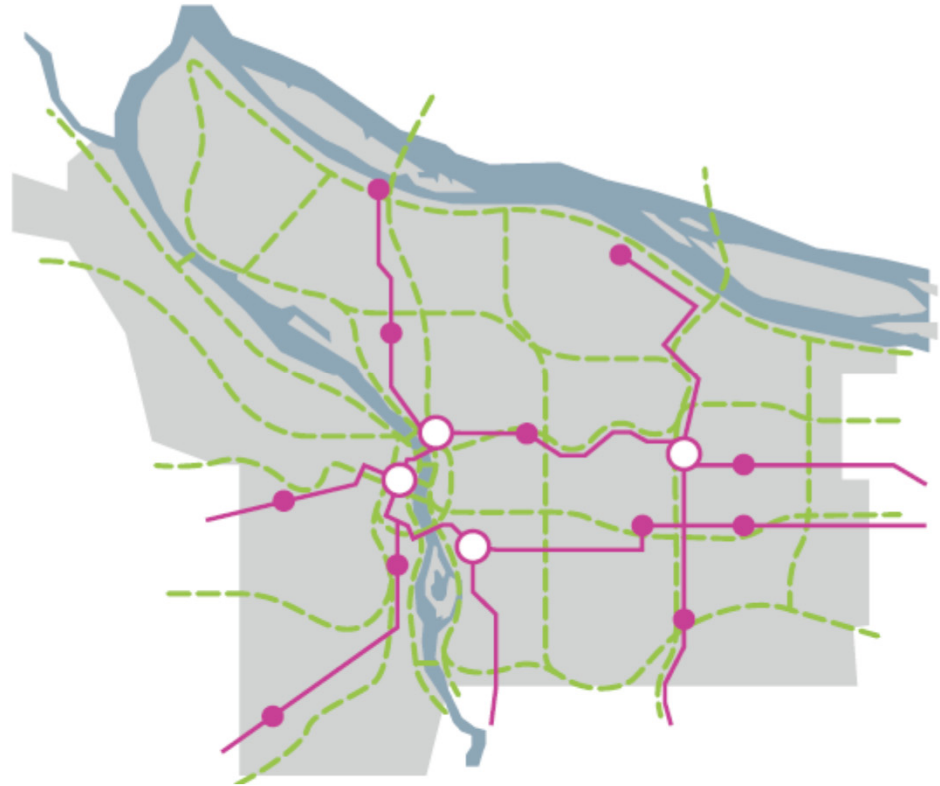
Safety



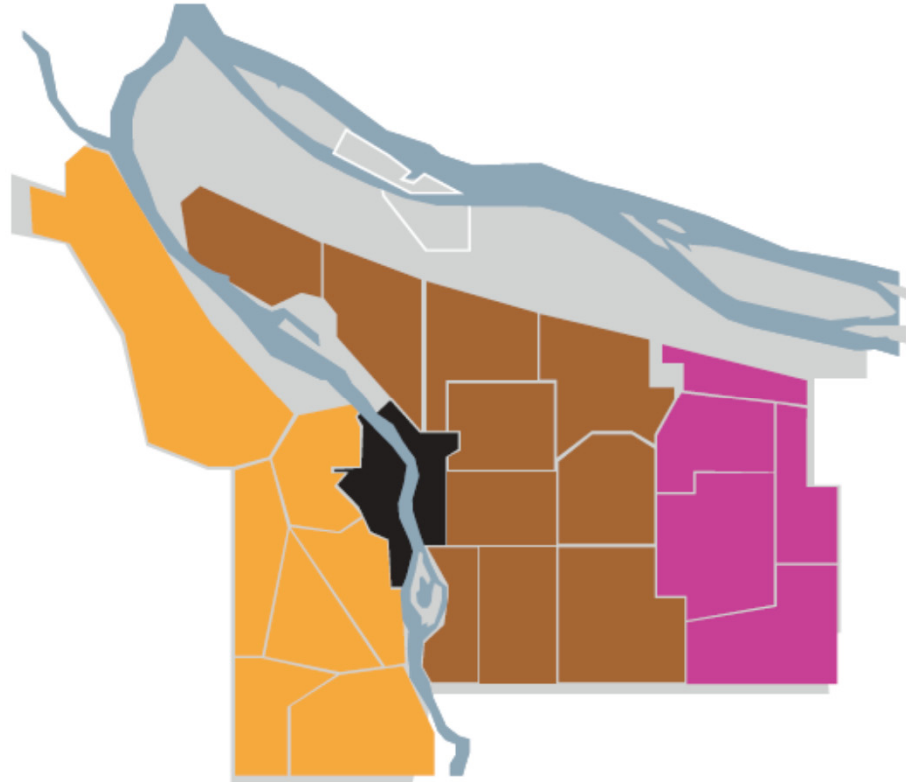
Quality Housing



Connect People and Neighborhoods



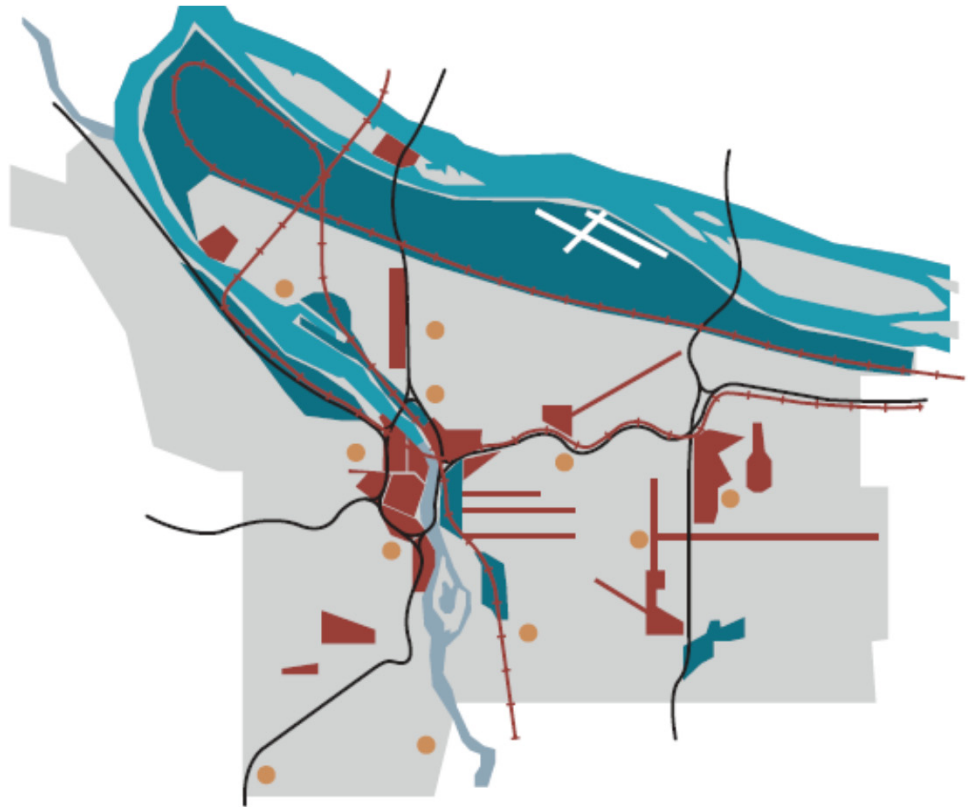
One Size Does Not Fit All



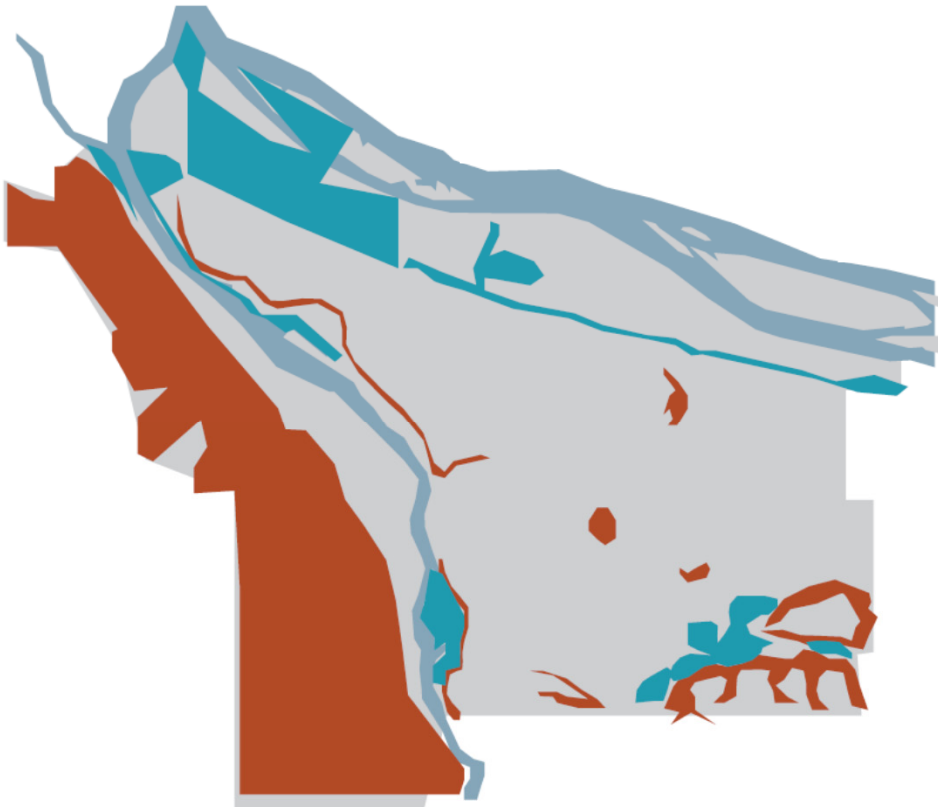
Improve Natural Areas and Open Spaces



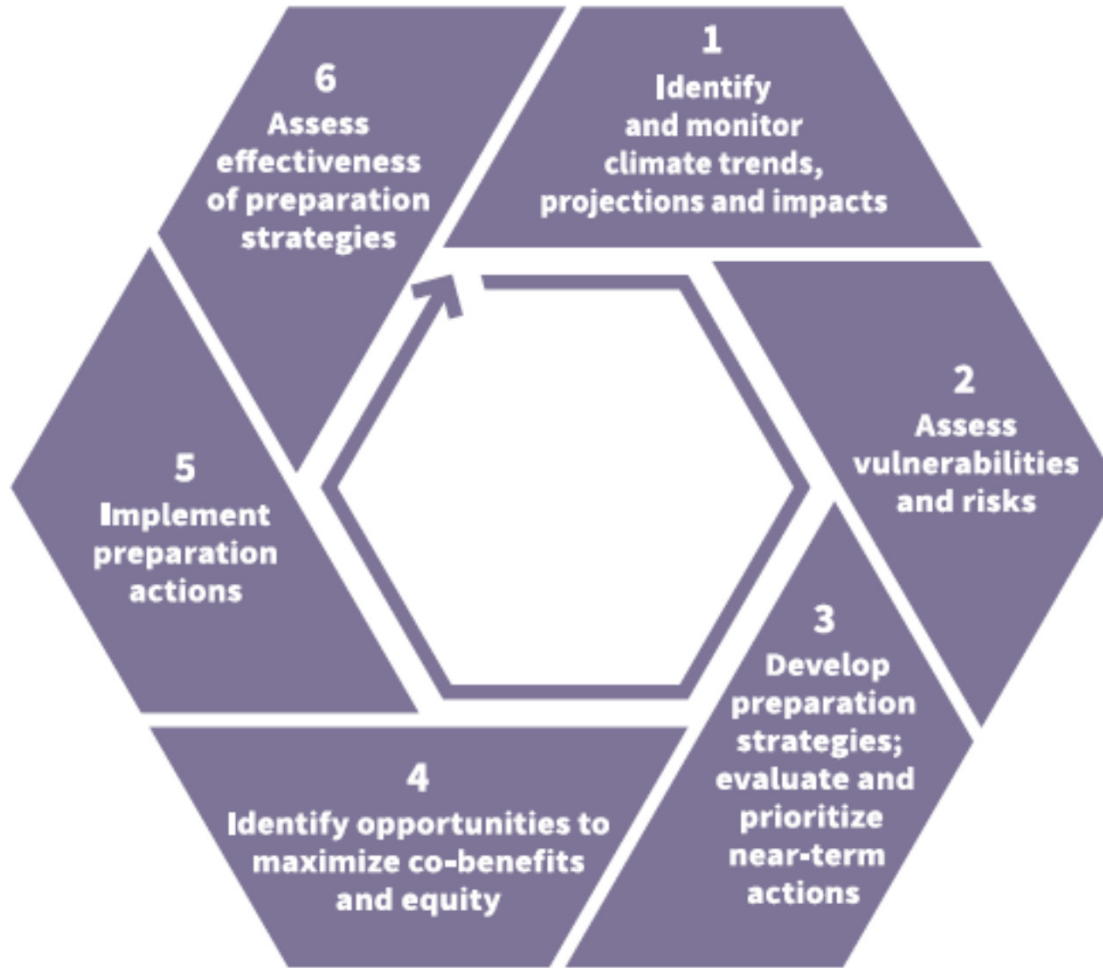
Encourage Job Growth



Resiliency



Low Carbon Community



This diagram summarizes the adaptive management planning process the City of Portland is using to prepare for climate change.



Reliable Infrastructure to Equitably Serve All Parts of the City

- System maintenance
- System deficiencies
- Future needs/growth
- Equity

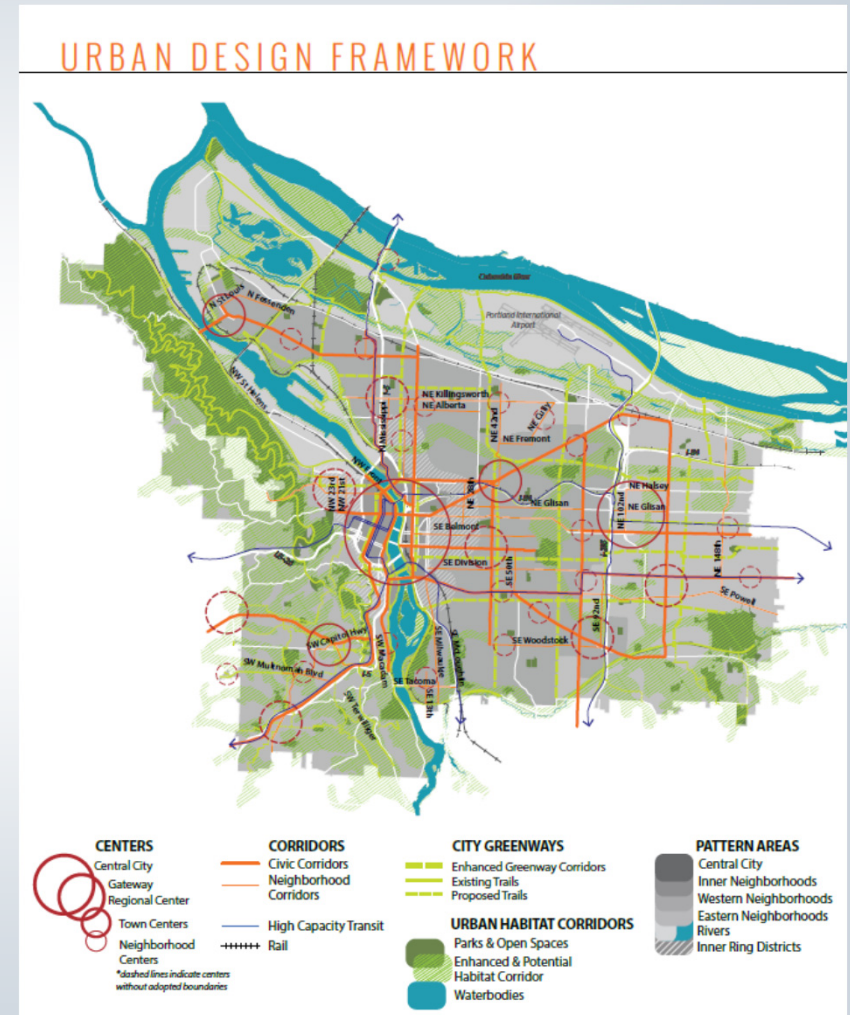


Urban Design Framework

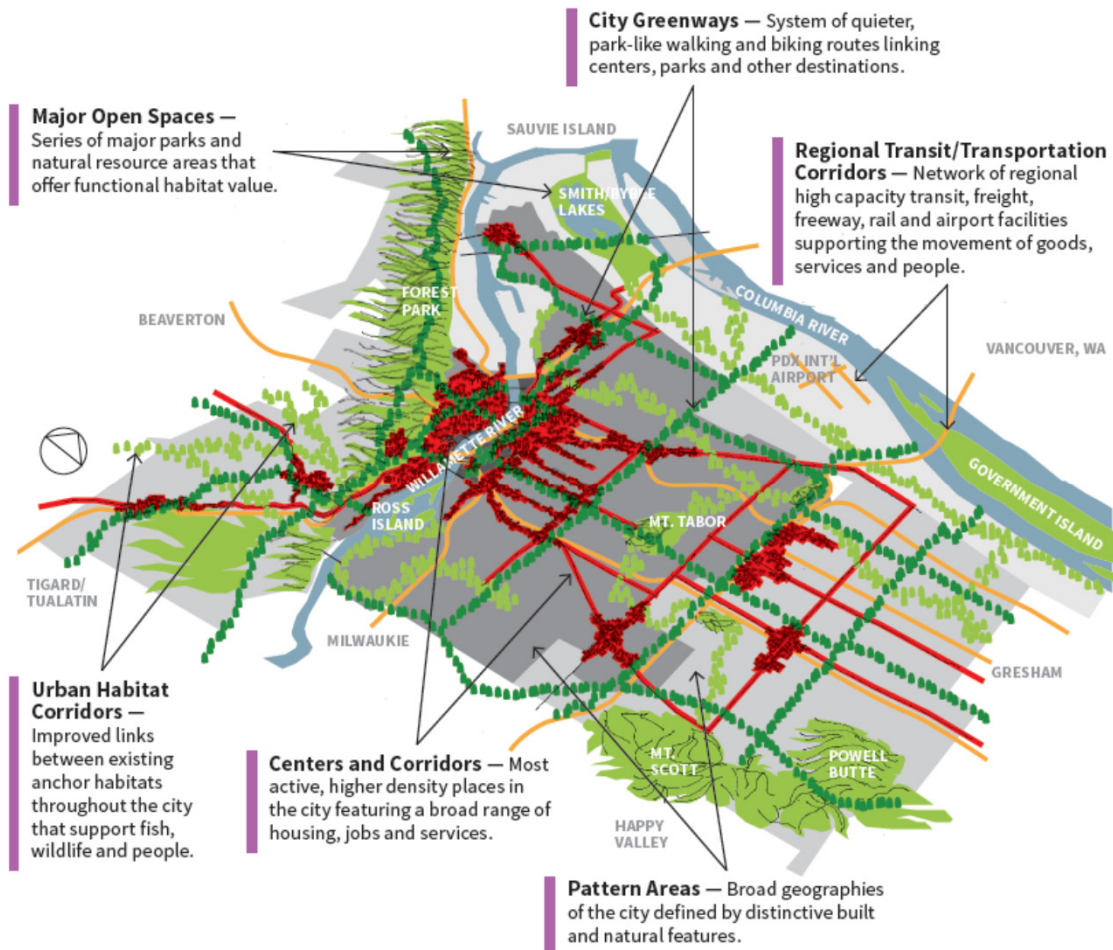
What is it?

How is it Used?

- Concept Illustration
- Communication tool
- Defines place types
- Informs later planning work
- Not a development review tool

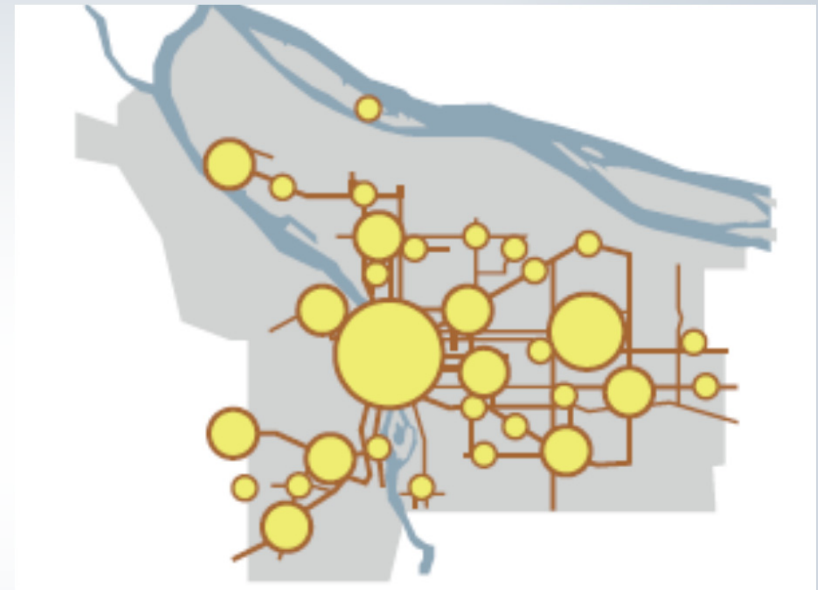


Urban Design



Urban Design Terms

- Town Centers
- Civic Corridors
- Neighborhood Centers
- Station Areas
- Greenways and Habitat Corridors
- Employment Districts
- Pattern Areas – Inner, East, West, River



NEIGHBORHOOD CENTER



HOUSING	3,500 units
JOBS	Primarily retail/ service
BUILDING SCALE	Up to 4 stories



TOWN CENTER



HOUSING	7,000 units
JOBS	Diverse employment/ institutions
BUILDING SCALE	Up to 5-7 stories



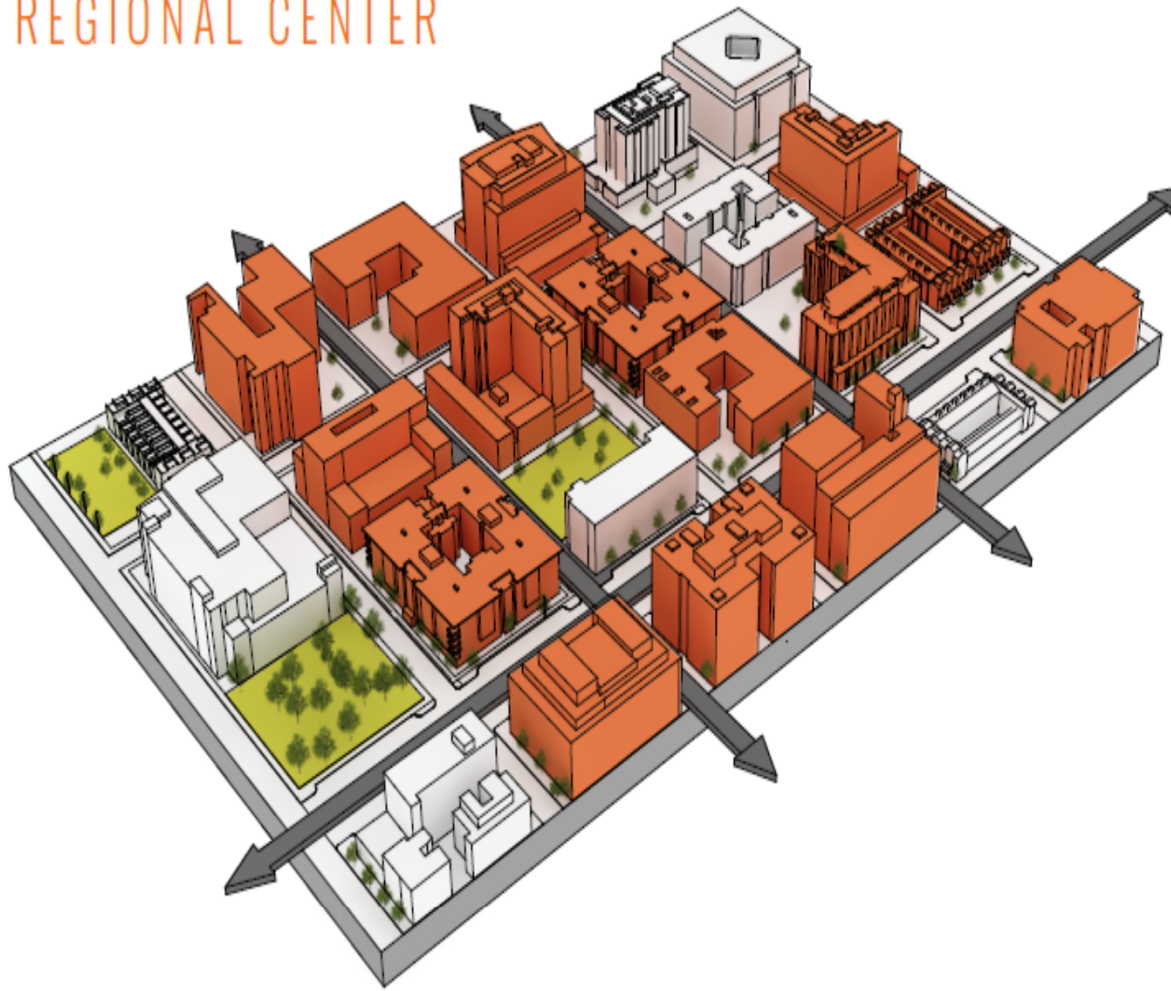
Corridor



New Development



REGIONAL CENTER



HOUSING	23,000 units
JOBS	Employment hub for East Portland (capacity for 23,000 jobs)
BUILDING SCALE	Up to 5-12 stories



CENTRAL CITY



HOUSING	67,000 units
JOBS	Regional employment hub (capacity for 248,000 jobs)
BUILDING SCALE	Up to 30+



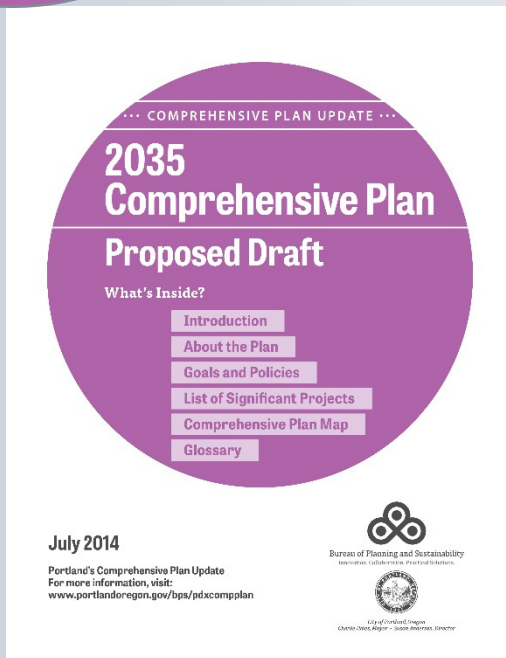
Different Types of Places = Choices



Bureau of Planning and Sustainability
Innovation. Collaboration. Practical Solutions.



Goals and Policies



1. Guiding Principles
2. Community Involvement
3. Urban Form
4. Design and Development
5. Housing
6. Economic Development
7. Environment and Watershed Health
8. Public Facilities
9. Transportation
10. Administration

Goals and Policies

- **Goals** are long-term outcomes the City hopes to achieve by implementing the Comprehensive Plan.
- **Policies** are preferred direction and describe what must be done to achieve these broad goals.



Policy Changes

The Proposed Plan has...	The 1980 Comp Plan has...
1. A more direct focus on equity	Portland was a less diverse city when the Comp Plan was originally written in the late 1970s.
2. Explicit integration of public health goals and considerations	No explicit consideration of public health
3. A robust community involvement chapter	Only a few public involvement policies – mostly focused on outreach to neighborhood associations
4. A recognition that one size does not fit all	Policies primarily aimed at inner Portland neighborhoods



Policy Changes

The Proposed Plan has...	The 1980 Comp Plan has...
5. An emphasis on “Complete Communities” and growth in “Centers and Corridors”	“Nodes and Noodles” - high density corridors were spread out with less consideration of accessibility and services
6. Policy to encourage affordable housing in “opportunity areas”	Goals for a specific mix of household types and incomes in the Central City, and discourages concentration of affordable housing in a single location
7. More planning for institutional campus growth, including hospitals, colleges and large high schools	Implementing regulations that require periodic Conditional Use Master Planning process for Campuses



Policy Changes

The Proposed Plan has...	The 1980 Comp Plan has...
8. Consideration/integration of watershed health, integrating nature and the city, promoting green infrastructure, climate action	Environmental policies that primarily emphasized protection of stream corridors
9. An emphasis on maintaining existing infrastructure, and financial constraints	System plans had long, project 'wish' lists that did not reflect financial realities
10. Multimodal transportation system performance standards	Vehicle-based performance standards that primarily address intersection performance and vehicle congestion
11. For goods movement, greater emphasis on transportation investments to improve access to industrial lands	Freight investments were not as clearly tied to economic development goals and objectives



Policy Changes

The Proposed Plan has...	The 1980 Comp Plan has...
12. For people movement, priority in design and investment given to the most vulnerable road users - pedestrian, bike, transit modes	Alternatives to the automobile encouraged
13. Greater transparency in how infrastructure projects are selected to be built	Project shopping lists that were reviewed by the public
14. Emphasis on schools as multi-use facilities and assets that serve the community	A school policy, but implementing regulations often treated schools as undesirable nuisances, and other community uses were discouraged

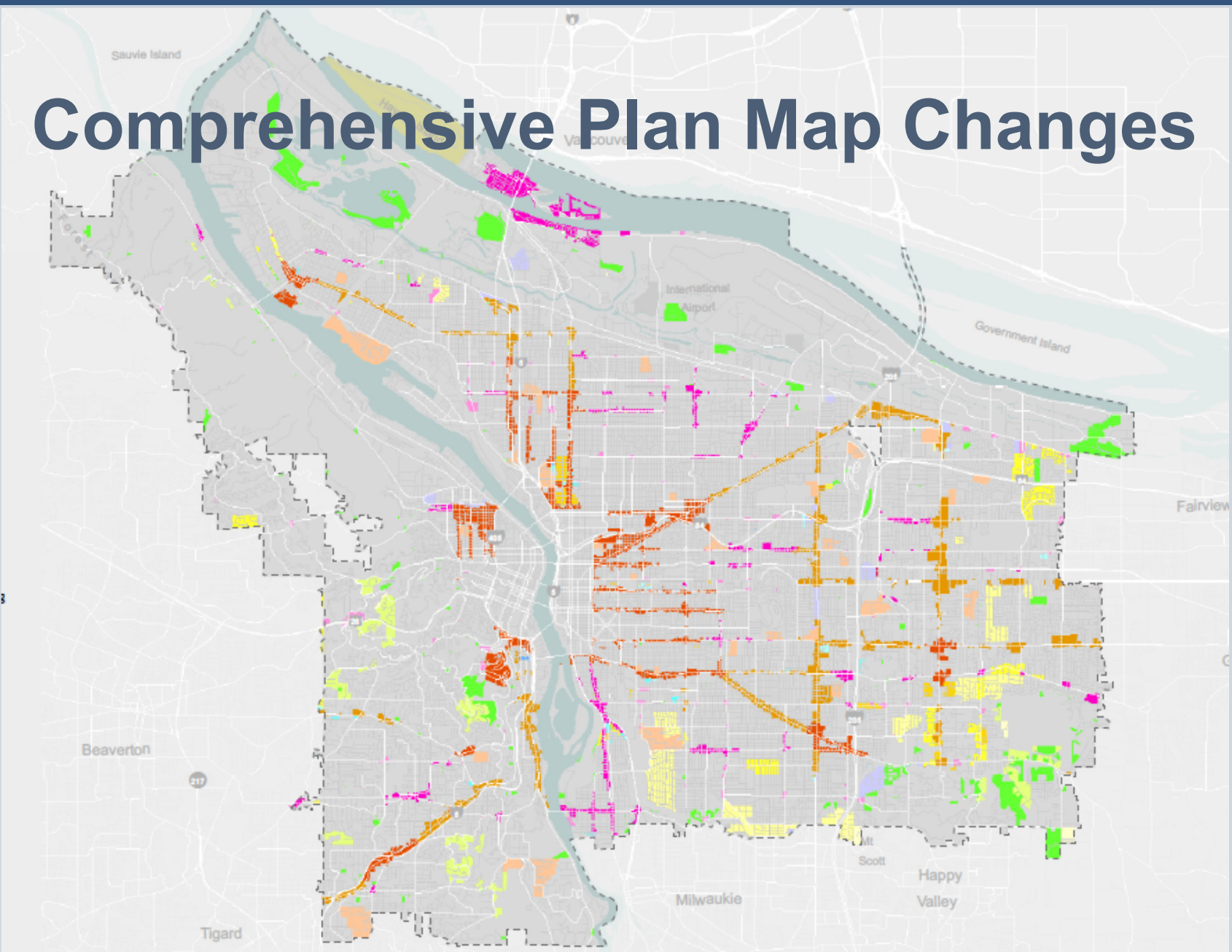


Comprehensive Plan Map

- Centers and Corridors
- Jobs
- Risks and Service Gaps
 - Hard to serve hazardous areas
 - East Portland, David Douglas schools
- Neighborhoods, Parks and Open Space



Comprehensive Plan Map Changes

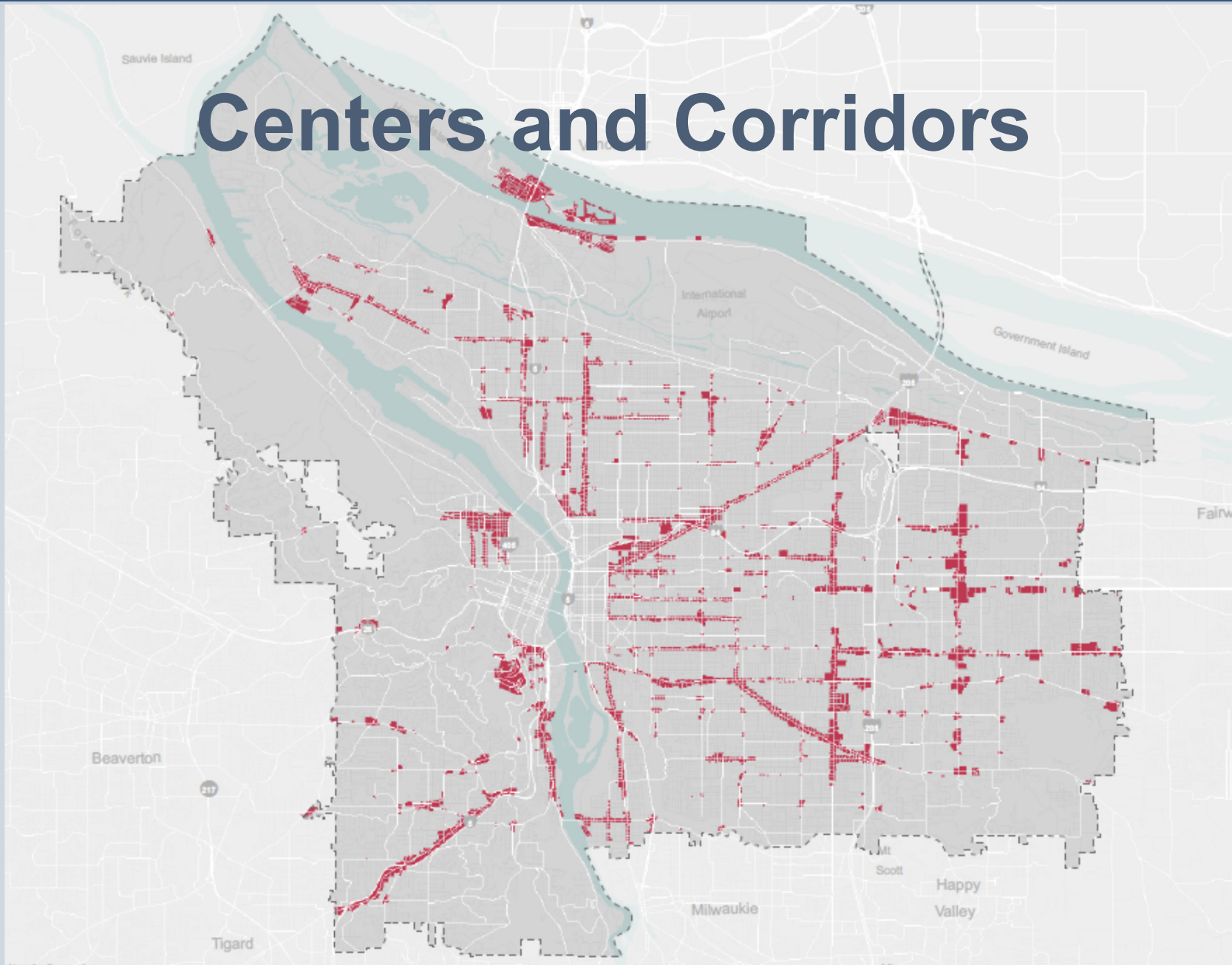


Centers and Corridors

- Strong Central City growth
- Centers and corridors growth strategy
- Increase housing opportunity in transit-accessible neighborhoods close to the Central-City
- New Town center designations
- Nonconforming-use issues in several corridors
- Add commercial designations in selected locations



Centers and Corridors

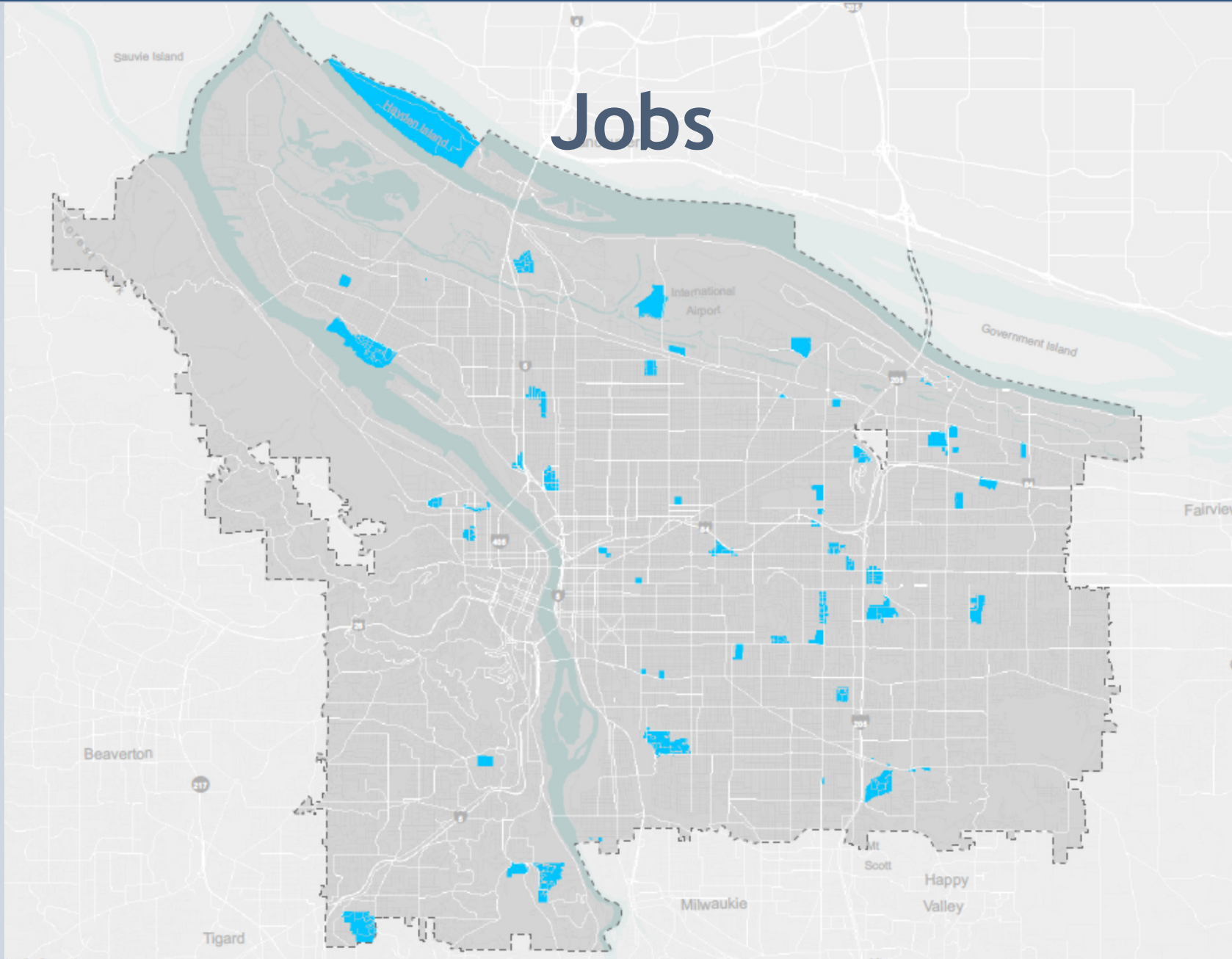


Jobs

- Major colleges & hospitals
- Equivalent of the Central Eastside Industrial Area in the Gateway District
- Employment in segment of 82nd Ave., rather than high density housing
- Other sites in East Portland (portion of Rossi Farm, etc.)
- Two golf courses (Riverside and Broadmoor)
- West Hayden Island special designation



Jobs

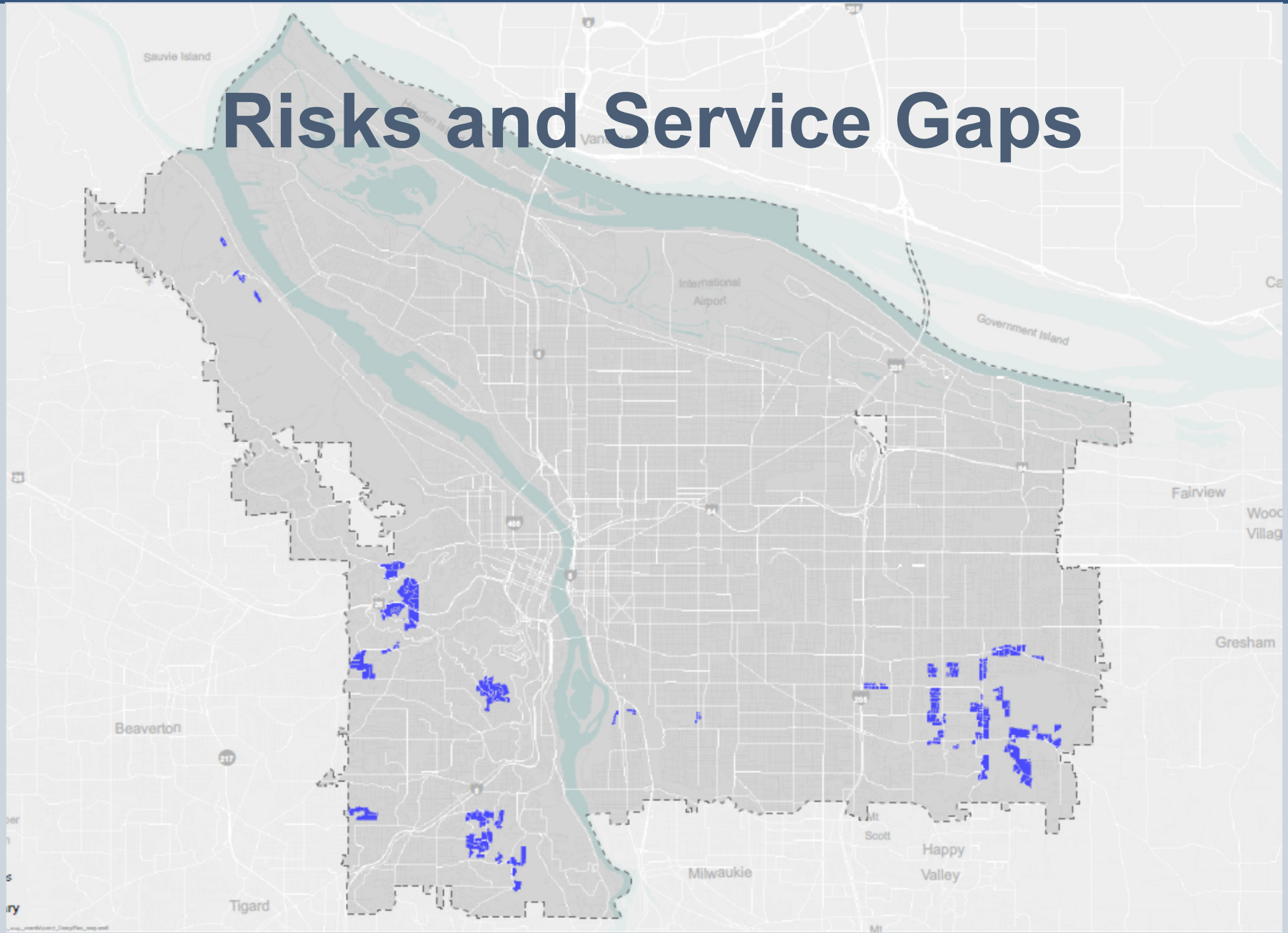


Risks and Service Gaps

- Remove some multifamily designations in the David Douglas school district
- Retain capacity for multifamily growth near 122nd and Division (Town Center).
- Density reduction in several areas - infrastructure limitations and public health and safety.



Risks and Service Gaps

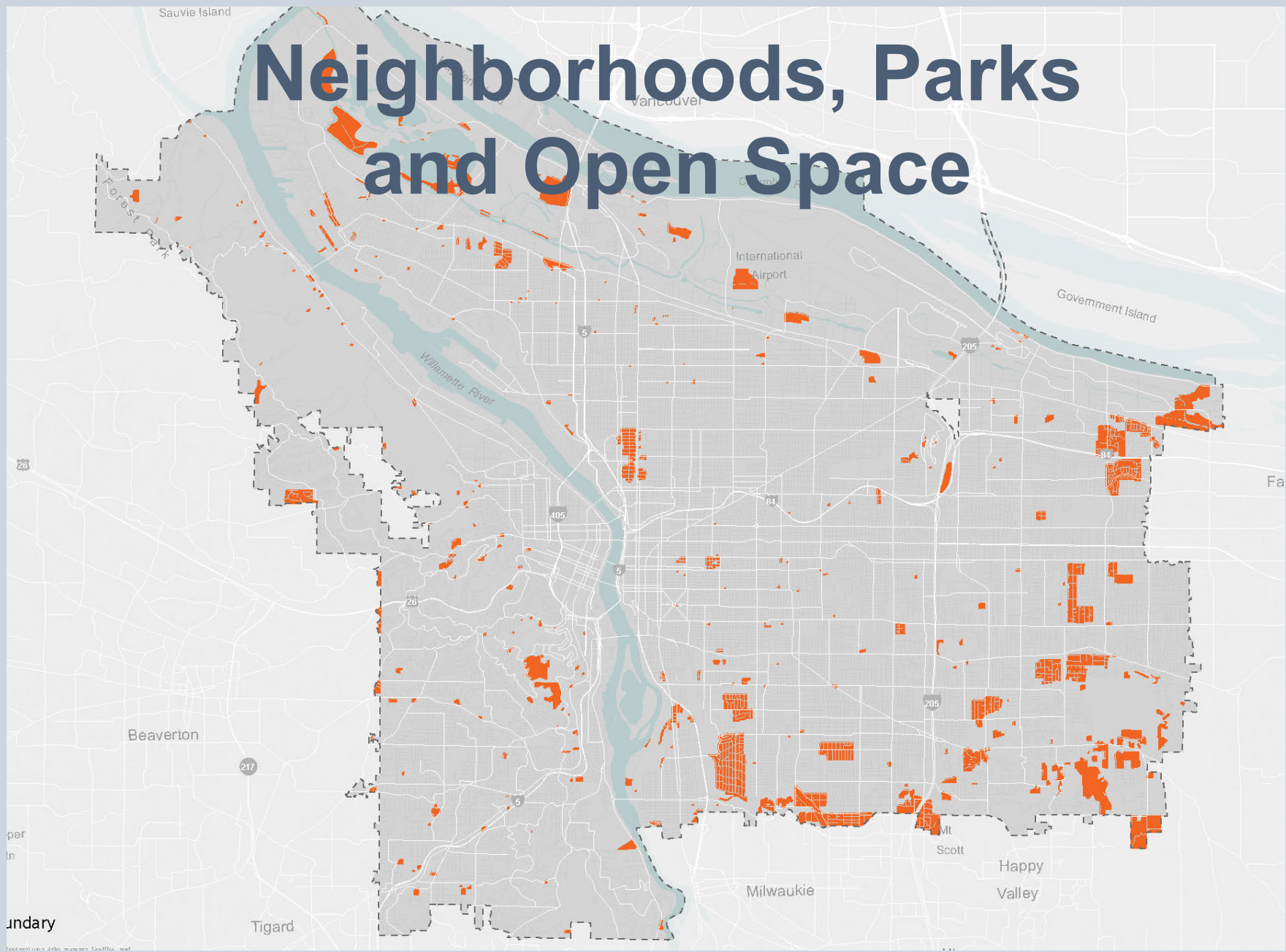


Neighborhoods, Parks and Open Space

- Adjusting some low density residential designations to better match existing lot patterns
- Updated Open Space designations to reflect recent park acquisition



Neighborhoods, Parks and Open Space



The Map App

test.portlandmaps.com/bps/cpmapp2/

Apps Suggested Sites Imported From IE

The Draft Comprehensive Plan

A plan for Portland

Land Use Transportation Infrastructure

What's up near you?

Combined proposed changes

All the proposed changes, aligning the Comprehensive Plan Map with draft goals and policies and planned infrastructure investments. Proposed changes are sorted by theme in the maps below.

- 1 Centers and Corridors
- 2 Jobs
- 3 Risks and Service Gaps
- 4 Neighborhoods, Parks and Open Space

The Comprehensive Plan Map

MAPS INFO LEGEND FAQs CONTACT

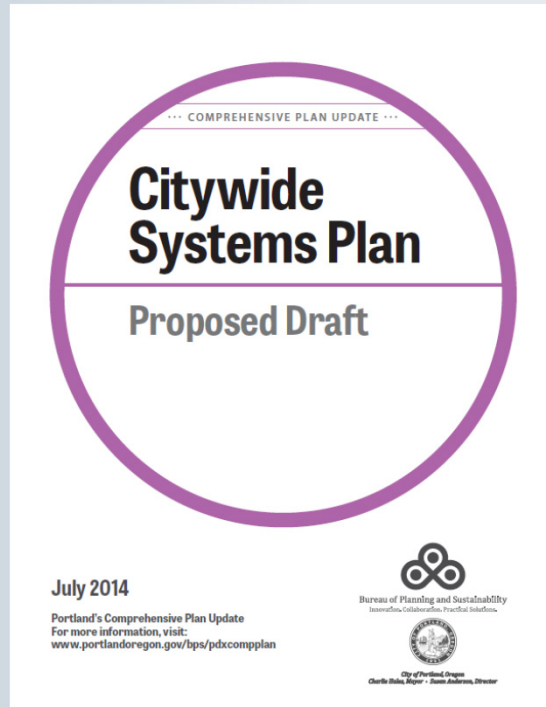
Powered by esri



Citywide Systems Plan

- 1 Planning & Coordination
- 2 Asset Management
- 3 Integrated Goals
- 4 Infrastructure & Service
- 5 Goals & Policies

- 6 Environmental Services
- 7 Water
- 8 Transportation
- 9 Parks & Recreation
- 10 Other Essential Facilities



Services

- Water pipes and reservoirs
- Sanitary sewer and wastewater treatment
- Stormwater sewers and swales
- Streets, bridges, some sidewalks, traffic signals, street lights
- Parks, community centers, and trails



What must be included in a public facilities plan?



Water



Sewer

(sanitary and storm)

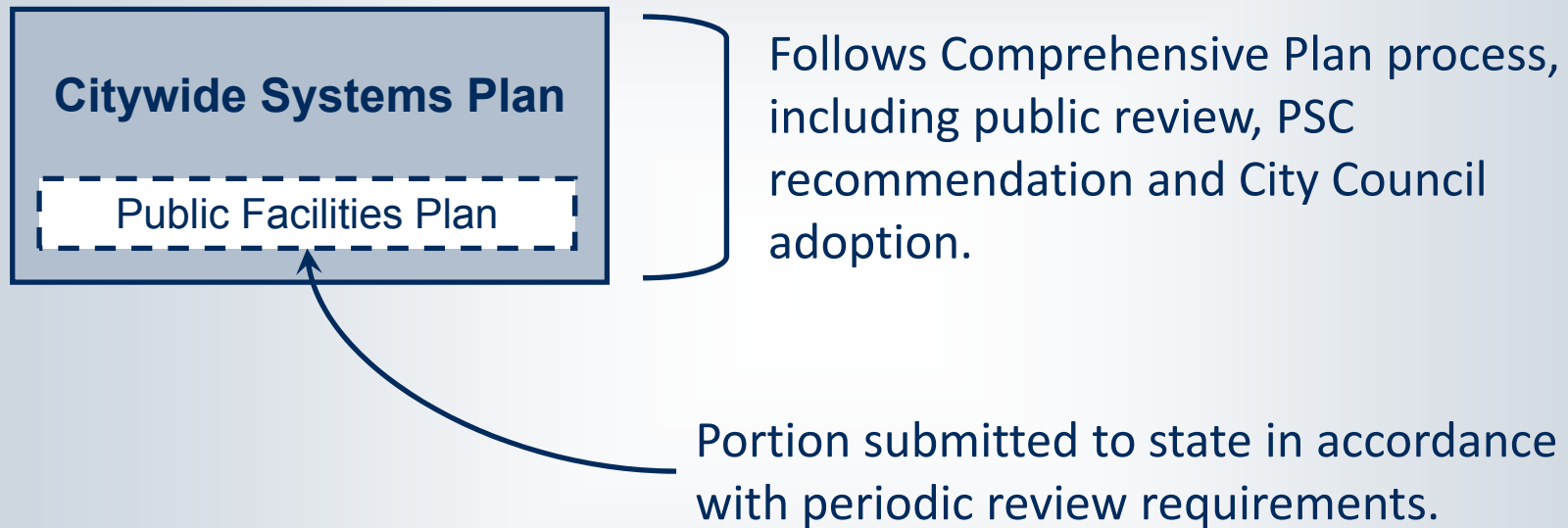


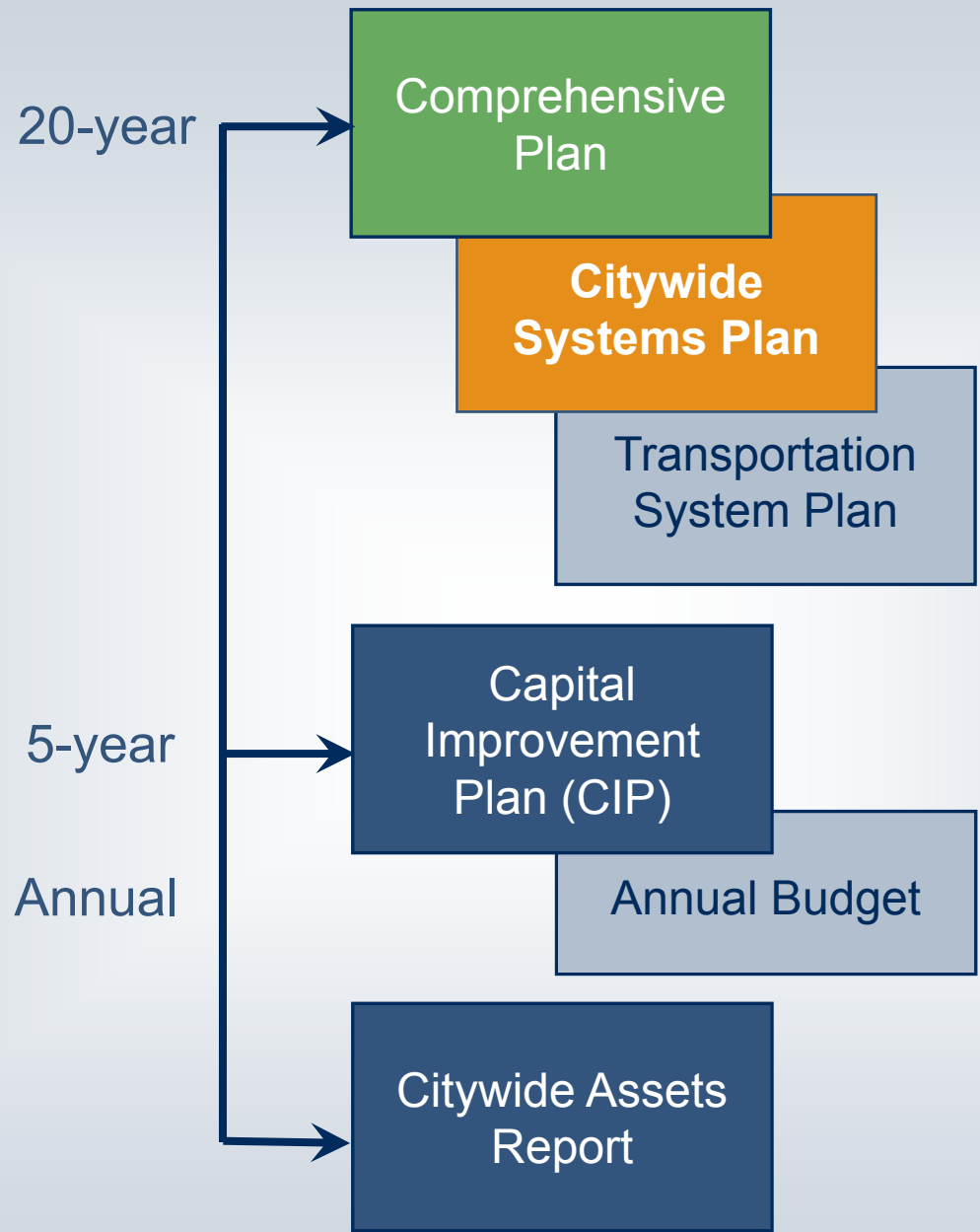
Transportation

Facilities needed to support designated land uses.

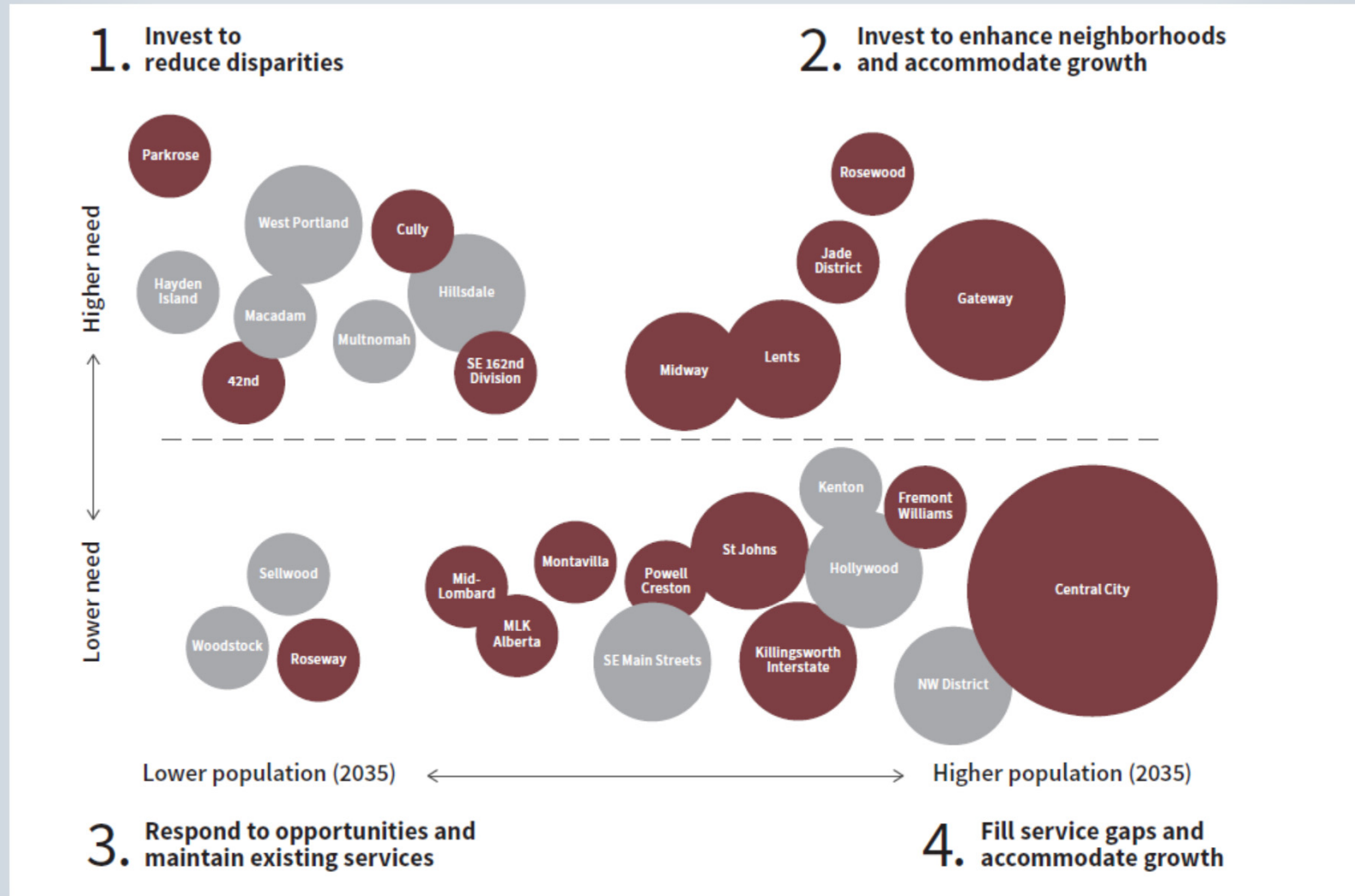


The technical details..





Investment Strategy



Transportation System Plan (TSP)

- Published Under Separate Cover
- Includes Policy, Project List, Financial Plan, Street Classifications, Street Plans
- Parts are adopted with the Comprehensive Plan (Chapter 9, Project List, Street Classifications, Street Plans)
- Also Driven by Metro and Transportation Planning Rule Mandates
- Also includes supporting information and implementing tools



Transportation System Plan (TSP)

July 2014 (Now)

- Citywide Goals and Policies (Chapter 9)
- Draft list of priority projects (in the Map App)
- Draft project selection criteria and process

Fall 2014

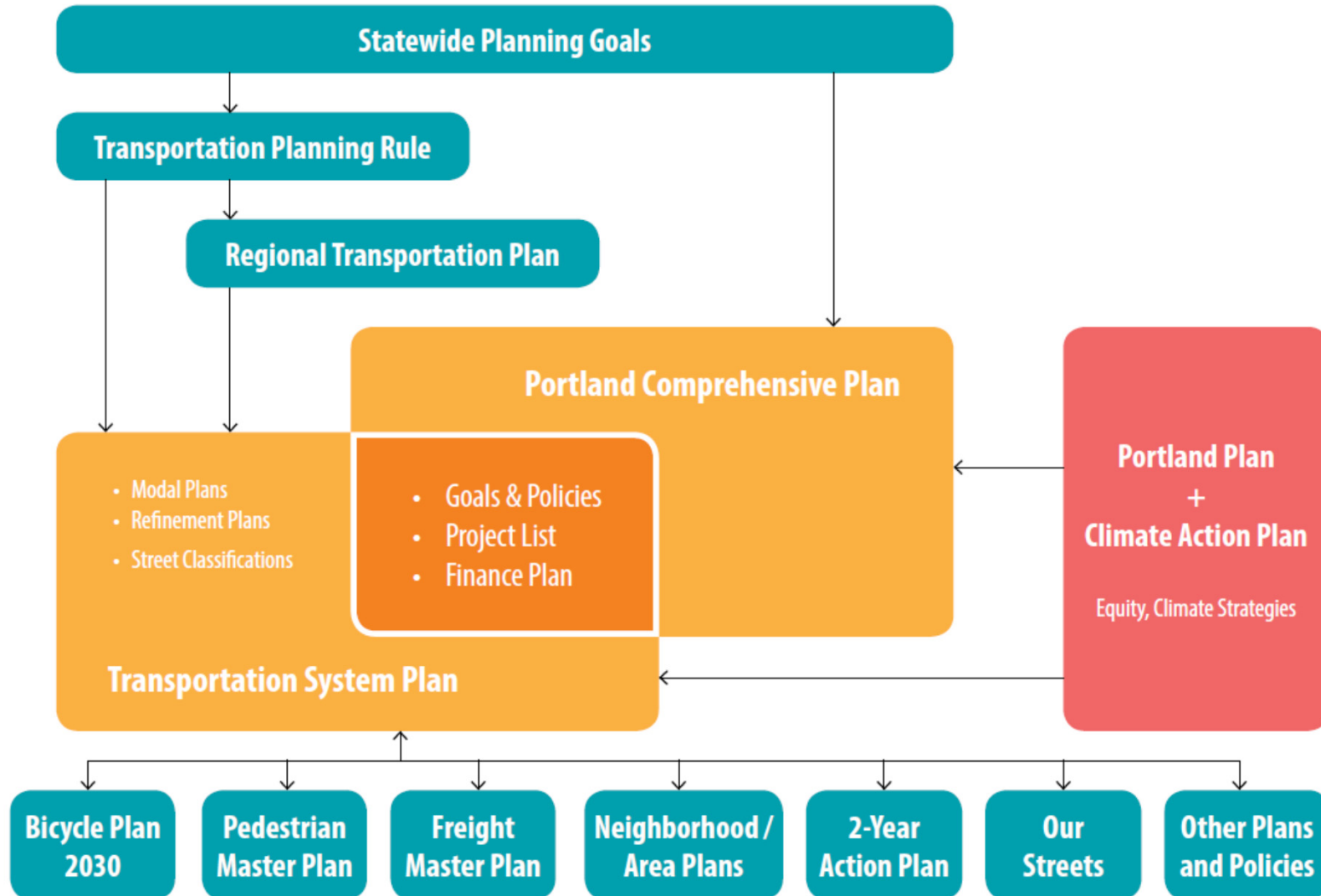
- Updated and ranked list of priority projects
- Financial plan
- Review of transportation modeling and findings

2015

- Additional geographic and mode-specific policy
- Street Classification Map updates
- Modal plan revisions (if appropriate)
- Code (Administrative Rule, Title 17; Street Design Guidelines)



TSP : RELATIONSHIP TO OTHER PLANS

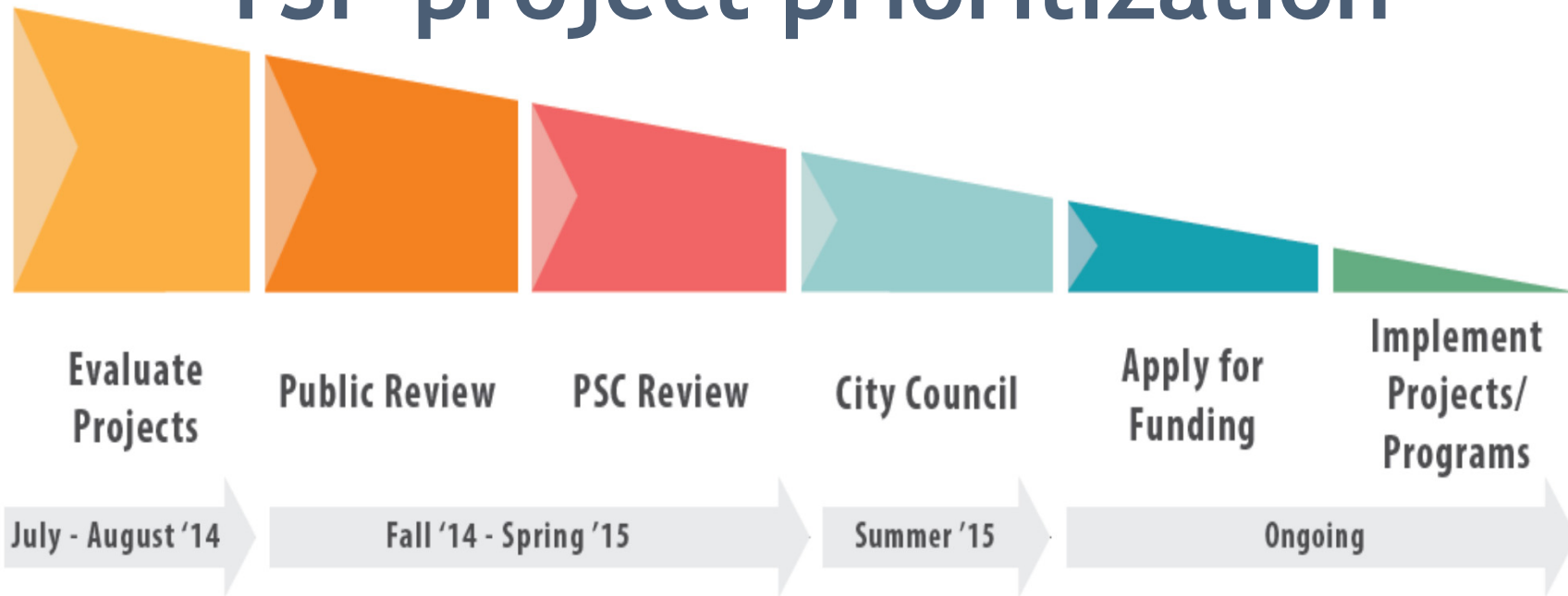


How will TSP projects be prioritized?

- Improve **access** to daily needs, such as jobs, schools, grocery stores, health care
- Reduce/eliminate transportation fatalities and injuries (**safety**)
- Improve **health** by increasing walking and bicycling
- Increase **economic benefits**, such as access to family wage jobs and freight access
- Ensure disadvantaged communities benefit as much or more than non-disadvantaged communities (**equity**)
- Reduce global warming pollution from transportation (**climate**)
- Prioritize the most **cost-effective** projects

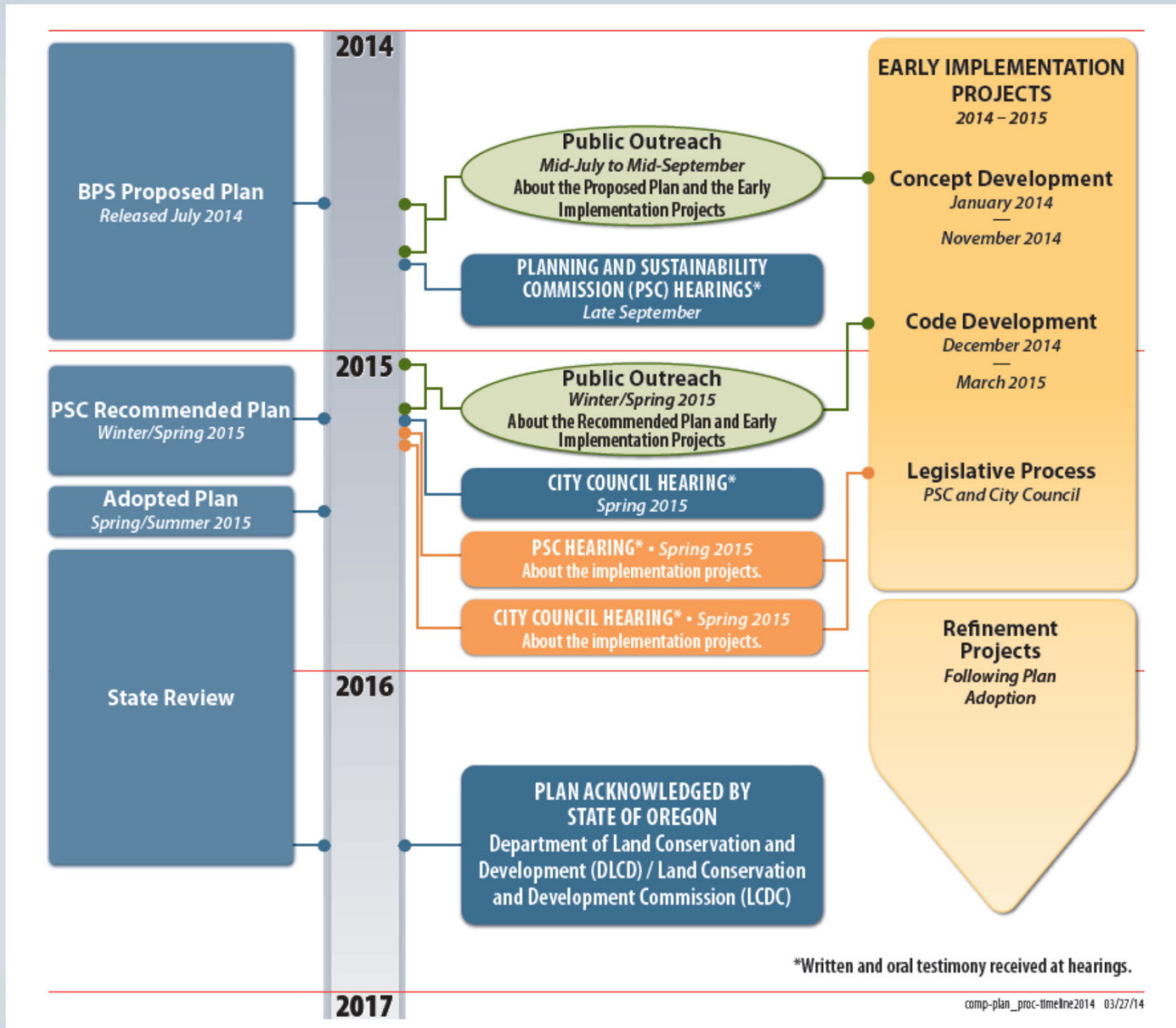


TSP project prioritization



COMPETITIVE PROJECTS CREATE GREAT COMMUNITIES
TSP Project Evaluation





Postcards and Public Notices



Portland's Comprehensive Plan Update proposes land use changes to create a healthier, safer, more connected city.



To learn more ...

- 1. View proposed changes on an online map:**
Check out the **MapApp** on any computer*, tablet or smart phone.
www.portlandoregon.gov/bps/mapapp
 - Type in an address to **view land use, transportation and infrastructure proposals** that may affect your property and/or your neighborhood.
 - **Comment** on the proposals online.
- 2. Go online** for more information to www.portlandoregon.gov/bps/pdxcompplan
- 3. Staff are happy to answer your questions!**
 - **Call the Helpline** at 503-823-0195.
 - **Drop in to talk** with someone in person. Check the Comprehensive Plan Calendar on the project website for times and locations.
 - **Email staff** at pdxcompplan@portlandoregon.gov



* All Multnomah County libraries have public access computers.

Please stay tuned!
You'll receive more information this summer about upcoming public hearings and opportunities to provide your comments on all proposals.

The Bureau of Planning and Sustainability is committed to providing equal access to information and hearings. If you need special accommodation, translation or interpretation please call 503-823-7700, the City's TTY at 503-823-6868, or the Oregon Relay Service at 711.

Community Outreach



Your input matters!

- Through the Map App:
www.portlandoregon.gov/bps/mapapp
(the maps and projects)
- By email: psc@portlandoregon.gov with
“Comprehensive Plan Testimony” in the subject
line
- By mail: Send a letter to the PSC, 1900 SW 4th
Avenue, Portland, OR 97201-5380



Your input matters!

- In person: Public hearings
 - September 23, 2014 (Policy)
 - October 14, 2014 (Maps)
 - October 28, 2014 (Maps)
 - November 4, 2014 (CSP, TSP Part 1)
 - November – January (Work Sessions)



Questions?

- Website:
www.portlandoregon.gov/bps/pdxcompplan

- Help Line:

