

Exhibit A

SE Sherrett Street between SE 34th & 36th Avenues
Designate and Assign Property Ordinance

PortlandMaps

[New Search](#) | [Mapping](#) | [Advanced](#) | [Google Earth](#) | [Help](#) | [PortlandOnline](#)

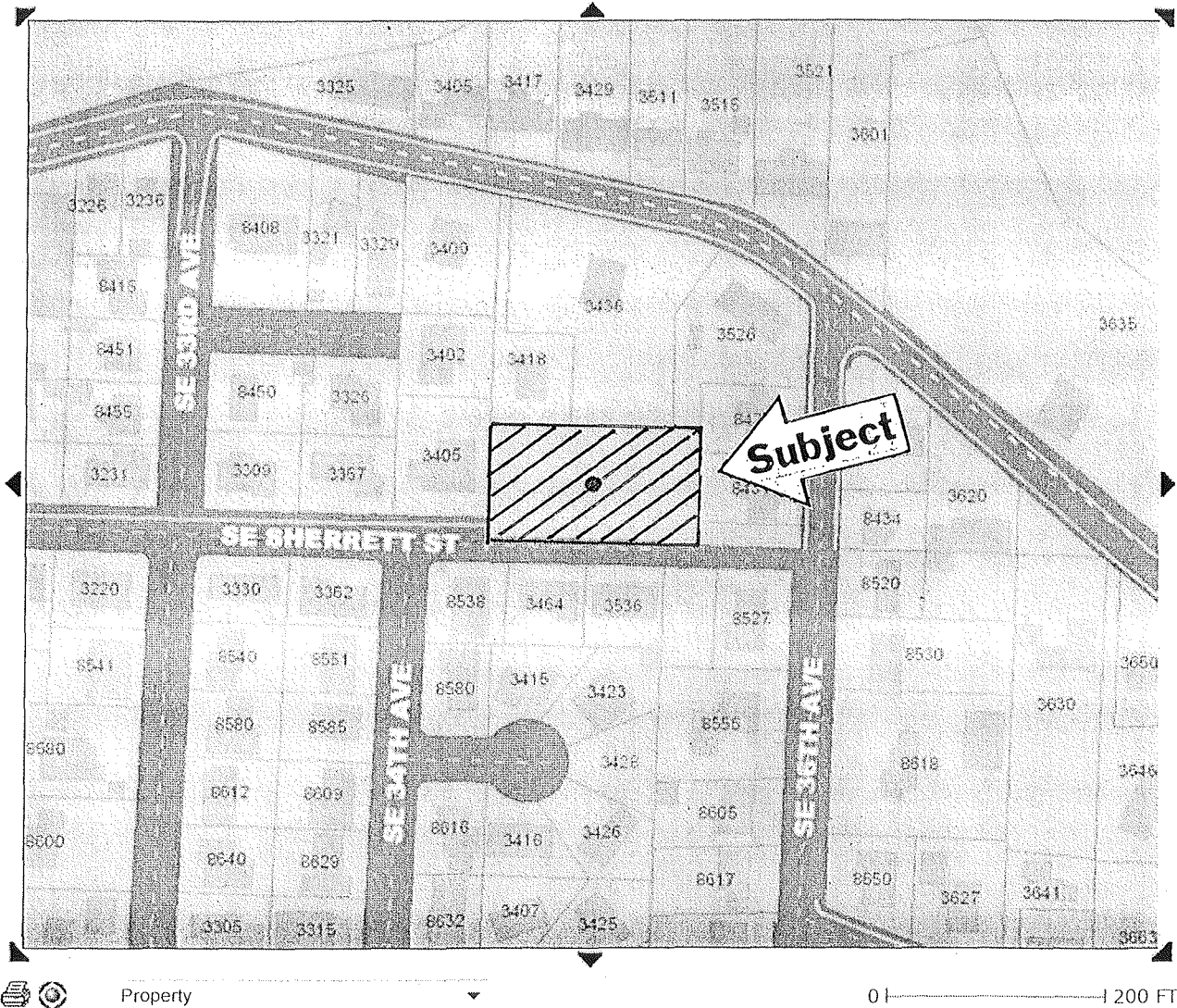
NO ADDRESS AVAILABLE - ARDENWALD-
JOHNSON CREEK - PORTLAND

[Explorer](#) | [Property](#) | [Maps](#) | [Projects](#) | [Crime](#) | [Census](#) | [Environmental](#) | [Transportation](#)

Explore the area, view different themes

[Property Detail](#)

Long -122.62722 Lat 45.46163



City of Portland, Corporate GIS

12/2/2013

THE GIS APPLICATIONS ACCESSED THROUGH THIS WEB SITE PROVIDE A VISUAL DISPLAY OF DATA FOR YOUR CONVENIENCE. EVERY REASONABLE EFFORT HAS BEEN MADE TO ASSURE THE ACCURACY OF THE MAPS AND ASSOCIATED DATA. THE CITY OF PORTLAND MAKES NO WARRANTY, REPRESENTATION OR GUARANTEE AS TO THE CONTENT, SEQUENCE, ACCURACY, TIMELINESS OR COMPLETENESS OF ANY OF THE DATA PROVIDED HEREIN. THE USER OF THESE APPLICATIONS SHOULD NOT RELY ON THE DATA PROVIDED HEREIN FOR ANY REASON. THE CITY OF PORTLAND EXPLICITLY DISCLAIMS ANY REPRESENTATIONS AND WARRANTIES, INCLUDING, WITHOUT LIMITATION, THE IMPLIED WARRANTIES OF MERCHANTABILITY AND FITNESS FOR A PARTICULAR PURPOSE. THE CITY OF PORTLAND SHALL ASSUME NO LIABILITY FOR ANY ERRORS, OMISSIONS, OR INACCURACIES IN THE INFORMATION PROVIDED REGARDLESS OF HOW CAUSED. THE CITY OF PORTLAND SHALL ASSUME NO LIABILITY FOR ANY DECISIONS MADE OR ACTIONS TAKEN OR NOT TAKEN BY THE USER OF THE APPLICATIONS IN RELIANCE UPON ANY INFORMATION OR DATA FURNISHED HEREUNDER. FOR UPDATED INFORMATION ABOUT THE MAP DATA ON PORTLANDMAPS PLEASE REFER TO [CITY'S METADATA](#). FOR QUESTIONS ABOUT ASSESSMENT INFORMATION PLEASE CONTACT THE COUNTY ASSESSORS OFFICE IN YOUR COUNTY.