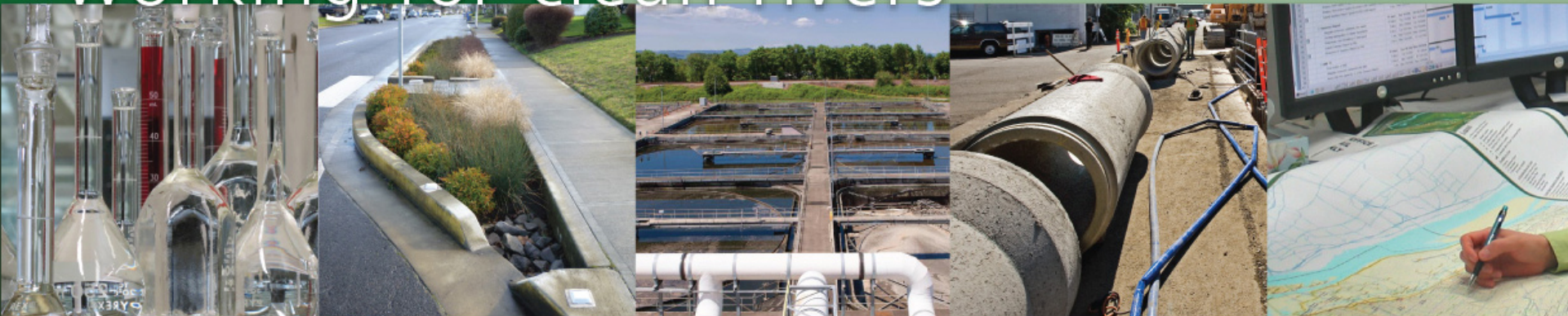


working for clean rivers



Southeast Interceptor Rehabilitation

(BES No. E10030)

Scott Gibson, PE
Principal Engineer

Bureau of Environmental Services

June 11, 2014

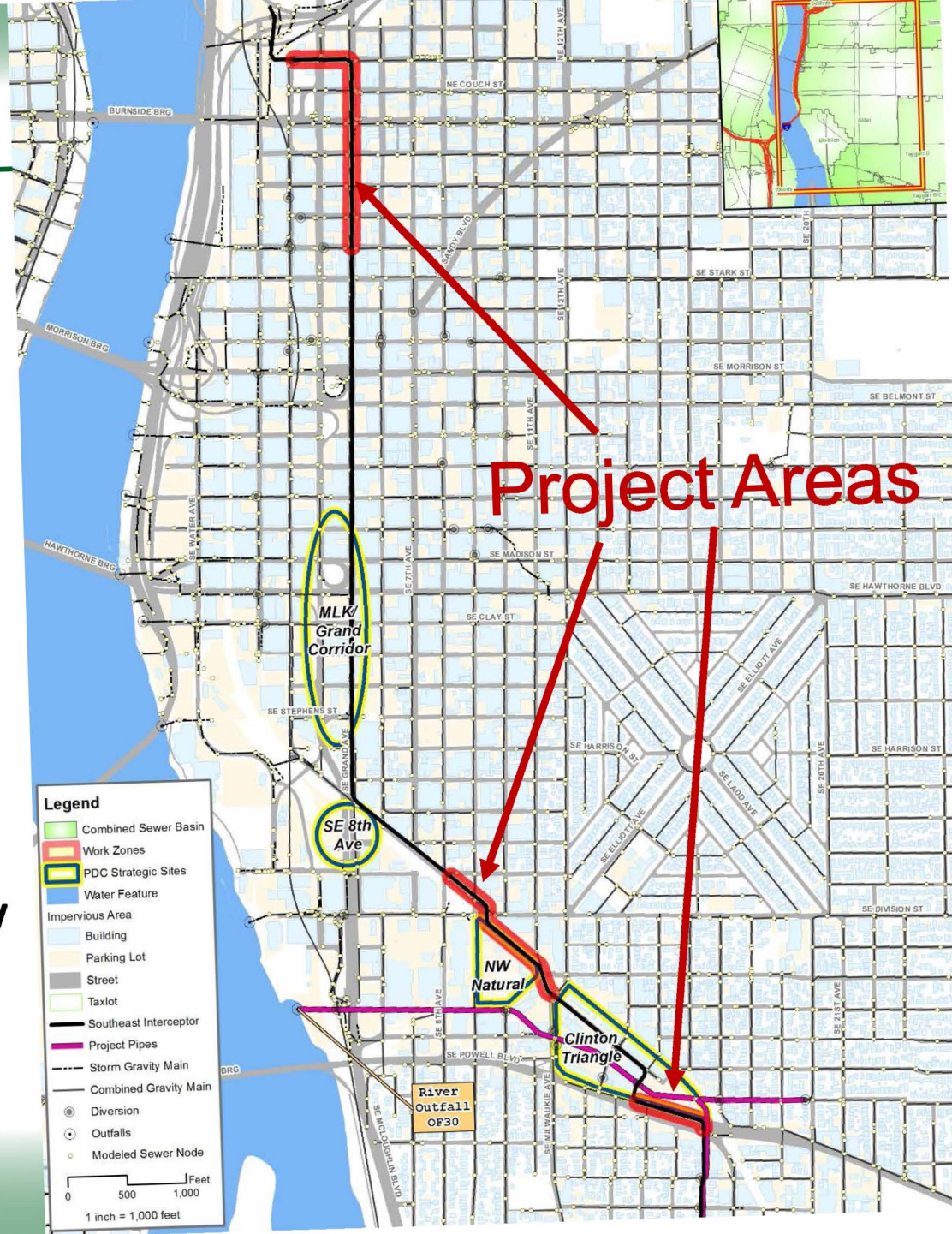


ENVIRONMENTAL SERVICES
CITY OF PORTLAND

NICK FISH, COMMISSIONER | DEAN MARRIOTT, DIRECTOR

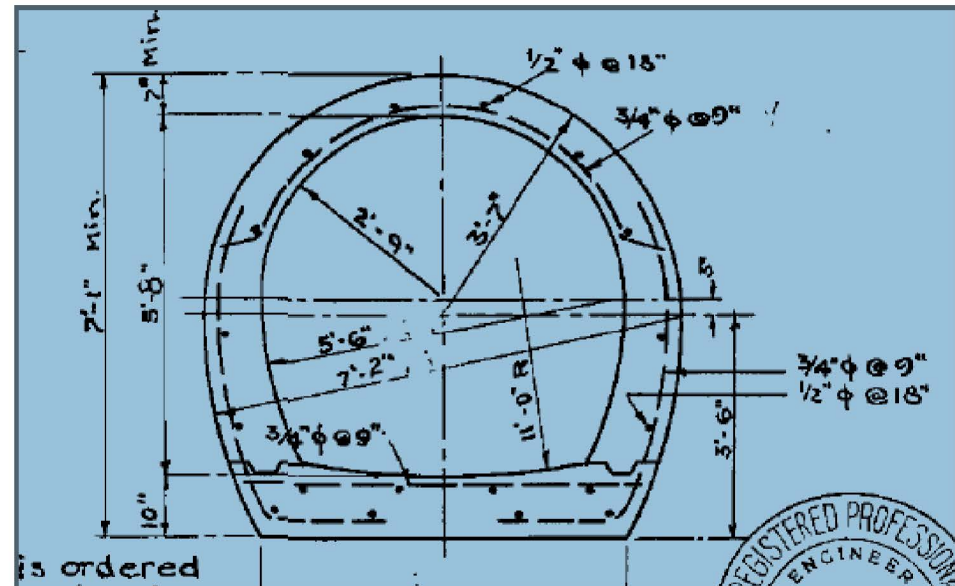
Location

- Primary Streets:
 - SE Grand
 - SE Division
 - SE Powell
- Neighborhoods:
 - Kerns
 - Buckman
 - Hosford-Abernethy



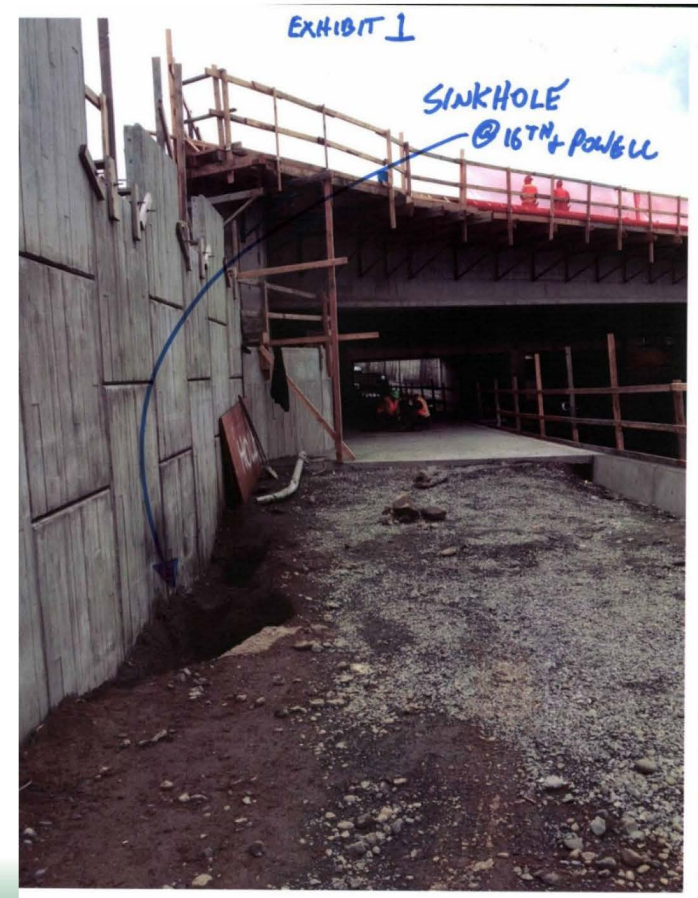
Southeast Interceptor

- Built in 1954.
- Conveys combined sewage for all of SE Portland
- Monolithic Concrete
- Diameters range in size from 66 to 74 inches
- Depths from 25 to 53 feet



Scope Development

- Based on 2006 and 2013 CCTV / video inspections
- Structural deterioration manifested through:
 - Infiltration
 - Cracks
 - Rock pockets
- Additional information found during Summer 2013 emergency repair



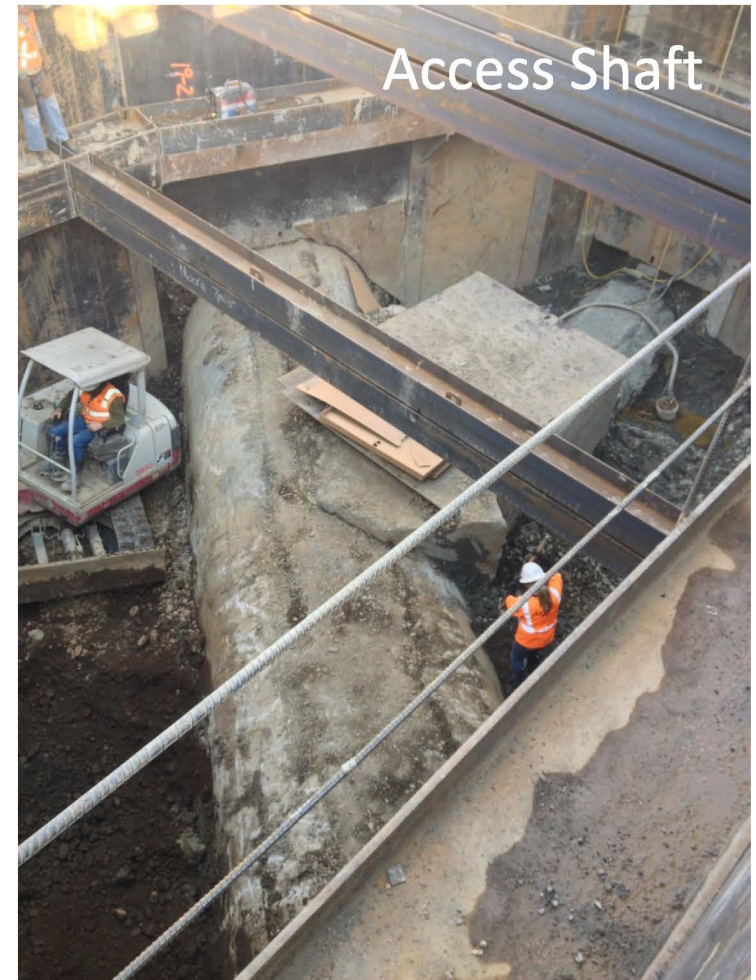
PTE Contract & Project Budget

- Contract developed per City procurement processes
- 2 firms responded to RFP
- Contract amount is \$1,727,430
(level of confidence is High)
- M/W/ESB participation is \$431,142 or 25% of total contract
- As-built documents and video inspections form basis of estimate
- \$14.3m project estimate
(level of confidence is Low)



Moving Forward

- Data collection & analysis
- Confined space entry into interceptor
- Evaluate alternatives
- Complete design & bid documents
- 2016 – Council approval of construction contract



Questions?



Grout Injection