

## HOME BUILDERS' Time Saving Guide

Alphabetically arranged for the convenience of Telegram readers who contemplate building a new home or making alterations.

**ARCHITECT**—L. R. Bailey Co., Inc. L. N. Bailey, architect, 924 N. W. Bank bldg. We design, build, finance any bldg. project. Established 1910.

**ARCHITECT**—2 sets house plans, \$12. H. A. Williams, 520 Ch. of Com.

**ARCHITECTURAL** advisor, BR 7669. E. T. Pape, Telegram home designer.

**BATHROOM**—Wainscoting, showers, drainboards, Vitrolite, "Better Than Marble." Vitrolite Construction Co. East 3689.

**BRICK** work, anything in the brick or tile line, large or small. EA 2612.

**BUILDER**—Guy M. Buford, SU 6822. Anything in carpentering; reasonable

**BUILDERS'** bonds and general insurance. T. C. Miller, 419-421 Board of Trade bldg. BR 2612.

**BUILDING SUPPLIES**—Cement, lime, plaster, brick, shingles, roofing, lath, gravel. Dennis Mercantile Co., three stores. WA 7421, BM 1866, TA 4656.

**BUILT-INS** and fly screens. O. C. P. A., 123 1/2 First st. BR 3654.

**CARPENTER**, contractor, will build your house or remodel. SU 3025.

**CESSPOOL** and all kinds of digging, reasonable. Sunset 2684.

**CONTRACTOR**—Before you build see Matot. Our method saves you money. Complete service. Bring your plans or see ours. We help finance. Matot Construction Co., Morgan bldg. MAIn 4472.

**CONTRACTOR**—Plastering and stucco; first class work. SE 0962.

**DOORS**, windows, builders' hardware, roofing. Heacock Sash & Door Co., 215 Second st. MA 1987.

**DOORS**, windows and sash, 50c up. Dolan Wrecking Co. East 6110.

**ELECTRIC** lighting fixtures. We show a complete selection at surprisingly low prices. English Co., 143 5th st. MAIn 0143.

**ELECTRIC** work guaranteed; reasonable. Sunset 3167.

**EXCAVATING** and contracting; all kinds of team work. TAbor 1638.

**FLOORS**—Hardwood, of quality, and hardwood flooring at lowest prices. Largest stock in Northwest. Oak Leaf Hardwood Floor Co., 385 East Clay. East 7022.

**FLOORS**—Eastern oak and maple. Rowell, Brown & Co. East 3588.

**GARAGES**—\$60 to \$300. Standard construction and fabrication; delivered, erected, stained; garage doors \$8 to \$10.50. General Building Co., 299 Weidler st. EA 3356.

**INSURANCE**—Fire, auto, plate glass, bonds. C. A. Wagner Co., 103 2d.

**KALSOMINING**, painting, paper hanging. C. R. Moody, SEIl. 2599.

**LUMBER**, molding, shingle, lath. Rowell, Brown & Co. EA 3588.

**LUMBER**—No. 3 and 4 common, \$10 per M. Dolan Wrecking Co. EA 6110.

**PAINT**, varnish, enamels, brushes. Heacock Sash & Door Co., 215 2d.

**PAINTS**, varnish, enamel, 70c per gal. up. Dolan Wrecking Co. East 6110.

**PAPER** hanging, painting. Union Av. Wall Paper & Paint Co. EA 1411.

**PLUMBING** supplies, complete stock. Dolan Wrecking Co. East 6110.

**SHINGLES**—\$1.50 per M. up. Dolan Wrecking Co. East 6110.

**SHINGLING**, new and old; also lathing. SU 4617. E. L. Clark. WA 3137.

**STUCCO**—Magnesite Feltstone Stucco means satisfaction. Dependable, waterproof, permanent. Feltstone Co., Inc., 240 Salmon st. MAIn 8472.

**STUCCO** and composition flooring. Bishopric products, factory mixed. Nottingham & Co. East 5381.

# Spath's Market

L. BOHMANN, Mgr.

S. W. CORNER 4TH AND YAMHILL STS.

CASH AND CARRY PRICES



## LEG OF VEAL

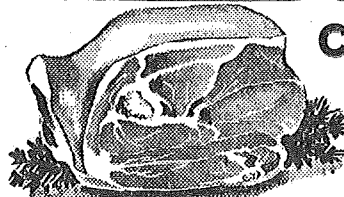
Cut from choicest of milk fed veal. Spath finest quality **19 1/2c** LB.

## PORTERHOUSE STEAK

Cut from finest quality steer beef. Right thickness for broiling. Lb. .... **23c**

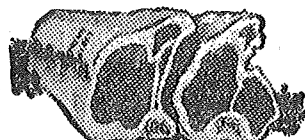
## CORNER BEEF

Spath's specially mild cured. Fancy steer beef briskets **15c**



## CORNER PORK

Shoulder arm cuts. You must taste it to appreciate its really different delicious flavor. Roast it, bake it, boil it. Ask for recipe. **19c** Lb. ....



## Pork Loin Roast

Choice young pig pork freshly cut, 2 1/2 to 3-lb. average. Lb. **25 1/2c**

## SPATH'S FINEST QUALITY SAUSAGE PRODUCTS

### LIVER SAUSAGE

Spath's finest make, with that real old-fashioned liverwurst flavor. Lb. .... **17c**

### LUNCH MEATS

A large assortment of our own make. Pure, better, a different flavor. Lb. .... **25c**

## Mettwurst—A Spath's Specialty, Lb. 22c

SPATH'S WEINERS Lb. 19c

NEW KRAUT Pt. 5c

SPATH'S BOLOGNA Lb. 19c

## Central Market Bakery In Spath's Market

### CREAM PUFFS

Deliciously fresh, filled with pure cream. Each ..... **5c**

### PUMPKIN PIE

A real treat. They're different; you'll like 'em **30c**

## Fruit Department

### ORANGES

13c Dozen  
2 Dozen 25c

### GRAPEFRUIT

4 for 10c  
29c Dozen

### Tokay Grapes

4 Lbs. 15c

## Joe and Virginia Fruits and Vegetables

### POTATOES

10 lbs. 15c

### CAULIFLOWER

LARGE SOLID HEADS

SELECTED QUALITY ..... **10c**

## PORTLAND'S OLDEST AND BEST FOOD MARKET

### Kappel's Old Holland Bakery CAKES

Again by popular demand we feature Kappel's famous Lime and Lemon and Chocolate nut fudge cakes, regular 55c for ..... **49c**

### KUCHEN CHERRY, PEACH, PINEAPPLE, each 25c

OLD-FASHIONED Cinnamon Rolls 15c a Pan

COFFEE CAKES HONEY ALMOND, each ..... **10c**

SALT-RISING BREAD FRESH EVERY DAY **10c**

### Snappy Cheese Store Our 10 Varieties

Tasty Salads **2 lbs. 35c**

ALWAYS Fresh — Delicious FOR THOSE WHO CARE Special Quantity Price For Parties

Wisconsin Swiss— **29c** pound  
Sandwich Cuts, 35c Lb.  
Jack Cheese, lb. .... **25c**

MIRACLE WHIP SALAD DRESSING Pt. 23c Qt. 33c

### CATERING . . .

Tempting lunches, or complete course dinners. Your menu or ours. We are prepared to render on short notice, a complete catering service. We know how to please you and your guests.

### J. A. Kraft Grocer WE DELIVER . . . AT

Ivory Flakes, large package ..... **19c**  
Amazo Oil, 1-gal. can ..... **1.19**  
Tillamook Loaf Cheese, 2 lbs. .... **49c**  
Marshmallows, 1-lb. cellophane bag ..... **11c**



**BUTTER**

LOWEST PRICES IN TOWN.  
CHURNED DAILY

**EGGS**

LARGE EXTRAS  
Dozen

32c

**CHEESE**

Cheese, lb. 19 1/2c  
Full Cream  
Wisconsin sharp  
Cheese, now lb. 25c

**VEGETABLE SHORTENING**

4 lbs. 49c  
in bulk

Lrg. Pkg.

2 pkgs.

**OXYDOL**

Limit None to dealers 35c

24 1/2-lb. sack SNOWDROP

sk.

**FLOUR**

65c

Fancy Lemon, or Orange

**Citron Peel**

25c

Fresh ground, good flavor

lb.

**COFFEE**

17c

FREE—1 pkg. Albers

**Corn Flakes**

7c

With Purchase of 1 pkg.

1000 Sheet Rolls Toilet

**TISSUE**

5 rolls 21c

4-oz. Bottle Vanilla

**FLAVORING**

Bottle 10c

8-oz. pkg. Cello-Wrap

**COCOANUT**

pkg. 10c

Aunt Dinah New Orleans

**MOLASSES**

No. 5 Tin 31c

3-lb. pkg. Picket

**PANCAKE FLOUR**

Special, pkg. 19c

Dark

**KARO SYRUP**

No. 5 tin 39c

Pure Vegetable

**SALAD OIL**

in your Container Gal. 95c

40 Grain pure Cider

**VINEGAR**

in your Container Gal. 15c

Red Mexican or Small White

**BEANS**

4 lbs. 19c

Good Head

**RICE**

4 lbs. 19c

Cut Hardwheat Spaghetti or

**MACARONI**

4 lbs. 19c

Reg. 5c tin Tomato

**HOT SAUCE**

3 tins 10c

**MID-WEEK SPECIALS**

**TUESDAY**

3 tins Sun Brite Cleanser, Tues. only.....10c  
3 lrg. tins Pacific Coast Oysters, for soups 29c  
2 lbs. fresh crisp Oyster Crackers, Tues. 25c

**WEDNESDAY**

No. 10 sk. Sperry's or Albers' Flapjack Fl. 49c  
4 pkgs. Jello or Jell Well, assorted flavors 19c  
3 pkgs. Wheaties (Breakfast of Champions) 27c

**THURSDAY**

10 Bars Sunny Monday Laundry Soap.....25c  
Lrg. pkg. Postum Cereal, Thursday only.....19c  
1/2 lb. Pure Black Pepper in bulk, Thurs. 15c

**Miracle Whip**

Salad Dressing

Pint

23c

Quart

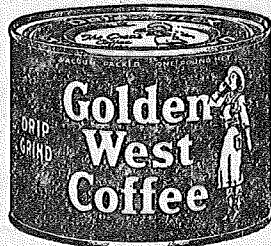
35c



**GOLDEN WEST COFFEE**

**NEW DRIP GRIND**

Lb. 26c  
Tin 26c



Finely ground! Fragrantly fresh!  
Try the new delicious Golden West Drip Ground Coffee.

The Popularity of the drip and slix methods of coffee making suggests the use of this extra fine grind, to bring out all the true coffee flavor.

"Come to Steve Herman's and Save Those Pennies"

**STEVE HERMAN'S**

S.W. Corner Front & Yamhill and 223 Yamhill St.

Look for Our Red Neon Sign at Either Store

We Reserve the Right to Limit Quantities Within Reason

INDEPENDENTLY OWNED AND OPERATED

PORTLAND SHOPPING NEWS OCTOBER 8, 1937

**SUNNYSIDE**

MODERN 5 ROOM BUNGALOW.  
PRICE \$4500.

You will like this cozy home, on a corner lot, in a cheerful location; hardwood floors throughout, fireplace, book cases, built-in buffet, tapestry paper and ivory finish.

J. A. HUBBELL,  
39th and East Stark.  
TA 9002.

NEW 4 ROOM BUNGALOW.  
Bath, nook, full cement basement, laundry trays, garage, 50x100 lot; 885 E. 17th st., near Holgate; \$3500, easy terms. TA 2091.

**106 Lots for Sale.**

**\$10 DOWN, \$5 A MONTH**

50x100, outside city, near car, school; water, gas, elec. lights; nice fir trees.  
**W. C. FLYNN & SON**

320-22 Board of Trade Bldg.  
Evenings, GA 0394. BR 1617.

LOTS in all parts of city, second mortgage privilege. See

W. C. FLYNN & SON,  
BRdy 2612, 410 Board of Trade.

WAVERLEIGH HEIGHTS—Choice building corner, 50x100, all improvements in and paid; priced to sell. Owner, SEILWOOD 2774.

**107 Suburban Property.**

BY OWNER.  
40 acres on Base Line, 7 acres in raspberries, good barn, fair house, electric lights, water and gas, fine soil, ready for subdividing or will subdivide to suit. Also several other tracts on Powell Valley and Newberg highways. See M. A. West, 1333 Thompson st. TRinity 1643.

A REAL BARGAIN.  
Modern 5-room bungalow at Metzger station, on Oregon Electric line; one acre of ground, garage and all modern conveniences. Price \$3675. It will pay you to investigate this sacrifice by owner. Call Main 4511 or Main 5171.

**109 To Exchange—Real Estate.**

2200 EXCHANGES 2200 EXCHANGES

GO—DIRECT—TO EXCHANGE HEADQUARTERS

OFFICES PORTLAND AND SALEM

The demand for exchanges has made necessary our "GREAT MARKET PLACE," where the requirements of all can be matched. We have just what you have in mind, just where you want it, just the right price. Our list of exchanges (the largest listing on the Pacific coast), guarantees your complete satisfaction, regardless of your requirements. If you would like to exchange your property TODAY, come in TODAY. See PARKER FOR PROPERTY, 1008 Porter Bldg., 6th at Oak. Telephone Broadway 9234.

**ROSE CITY BUNGALOW**

In Rose City proper; 5 rooms and attic; fireplace and furnace; hardwood floors, very nice yard with trees; priced right and terms like rent.

Will trade with some cash as payment on duplex in good location. This is an ideal home. Call Garfield 6262 or Broadway 2224.

TO EXCHANGE REAL ESTATE.  
160 acres in Malheur county, Oregon, described as southeast quarter section 3, township 36, range 37. Value about \$1600. Will exchange for Portland property about same value.  
J. H. MCKENZIE, 88 Front St.

FOR exchanges of all kinds, city and country, California for Portland, Portland for California, see

**T. C. MILLER**

Business Property and Leases. Exchanges, Mortgage Loans. BR 2612, 419 Board of Trade Bldg.

WE EXCHANGE Farms and Acreage FOR CITY PROPERTY. Exchange Dept. C. HENRY EDWARDS CO., 201-5 Henry Bldg.

IMPROVED city property to exchange for farms, acreage or vacant lots. INTERSTATE LAND CO. 511 Stock Exchange Bldg. MA 1595. RALPH HARRIS company for exchanges, 316 Chamber of Commerce. BR 5654.

PORTLAND TELEGRAM

1924



**Real Estate for Sale**

105 Houses for Sale.

**\$3300**

Modern 5 room bungalow, east front, full lot, good garage; improved street; one block from Mississippi car; very reasonable terms.

**\$4700**

Good home in Irvington; 5 rooms, hardwood floors, fireplace, furnace, hard surface all in, lot 50x100; \$1000 cash, balance to suit at 6 per cent interest; no mortgage.

OGDEN & GRAVELLE,

107 Shaver St. Wal 0202.

**\$4250 TERMS**

6 RM. MODERN HOME. ROSE CITY DISTRICT. Here is a big value at a small price. Entrance hall, living and dining room and dutch kitchen on main floor, 3 bedrooms, sewing room and bath upstairs, full basement, furnace and garage, 50x100 lot, with all improvements in and paid. This property is in excellent condition and immediate possession can be had.

J. A. HUBBELL, Office 39th and East Stark Sts. TA 9002.

**FRANKLIN HIGH BARGAIN.**

**\$3300—\$300 CASH.**

Out of town owner wires: "Take any reasonable offer on my nearly new bungalow." Two bedrooms, fireplace, garage, large living and dining room across front. This is a SNAP. Don't DELAY. Photograph in office. OPEN EVENINGS. See

PARKER FOR PROPERTY. 1008 Porter Building. 6th at Oak. Telephone Broadway 9234.

**ROSE CITY BUNGALOW**

In Rose City proper; 5 rooms and attic; fireplace and furnace; hardwood floors; very nice yard with trees; priced right and terms like rent. Will trade with some cash as payment on duplex in good location. This will be an ideal home for someone. Call Garfield 6262 or Broadway 2224.

**WEST PIEDMONT NEAR PARK.**

**\$270 CASH.**

Here's your chance to reside in a new, modern, English dwelling in a refined district on rental terms, if you have \$270 cash. Garage, fireplace, nook, attic, full basement, etc. Photograph in office. OPEN EVENINGS. See

PARKER FOR PROPERTY. 1008 Porter Building. 6th at Oak. Telephone Broadway 9234.

**WE GET RESULTS.**

Our personal and practical home selling service pleases both the buyer and the seller. You can do better with us. Homes priced as low as \$2500 and up to \$50,000.

**ASK RIDENOUR**

Office Open Evenings. 368 Sandy Blvd. TRinity 1164.

**Just Outside of City**

**3/4 Acre**

Five-room tile and stucco bungalow, brick trim, with nook, fireplace, full plumbing; city water and lights; gravel s. 1 blk. to station, 23 min. to city; level ground, partly wooded. Price \$3700; \$50 will handle. Call House Dept.,

Fred W. German Co., Realtors

241 Stark St. BR 6446. Open Sundays and Evenings.

**GIVE YOURSELF A RAISE in SALARY by**

**Trading at Steve Herman's**

Actually that's what it amounts to—for your food dollar goes so much farther here, it's just like making more money. I sell only quality merchandise, but I sell it at prices that permit the "leanest" budget to grow fat on! Note my prices and remember there's always a copy of my ad in each of my stores early Friday mornings so you may shop Fridays and thus avoid the big Saturday crowds. Save those Pennies at Steve Herman's.

Yours truly,

**Steve Herman,**

Your Grocer.



1937

Steve Herman Your Grocer

**FREE CANDY SIPPER**

to each child accompanied by parent. Be sure to ask for yours.

Open Saturday Till 9 P.M.

**This Coupon and 10c**

Entitles You to One Reg. 35c 16-oz. gauge

**GLASS COCKTAIL SHAKER**

Complete with durable metal top and strainer

Get Yours While Stocks Last

New Crop Canned Vegetables Are In Now  
**CORN, PEAS, TOMATOES, STRING BEANS**

Lima Beans, **3 tins 25c**  
SPECIAL AT

**Saturday, 9 A.M. to 2 P.M. Specials**

2 lbs. Dinner Bell Oleo Margarine (Limit) . . . 25c

2 lbs. New Nucoa, and extra special at just . . . 35c

2 lb. tin Good Cocoa, Save at this price . . . . .

Reg. 35c qt. jar Wonder Salad Dressing . . . . . 27c

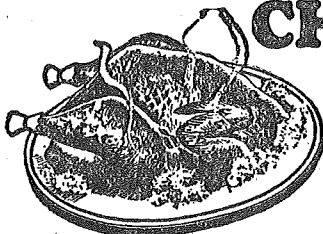
4 tins Oval Sardines, in mustard or tomatoes . . 29c

9 lb. sk. Yellow or White Corn Meal now at . . . 35c

2 lbs. Sweet Ground Chocolate in bulk, special 35c

Lb. Black or Green Tea, note this low price . . . 29c

**CHICKENS**



**lb. 15c**

Fresh Dressed

**THIS COUPON AND 10c**

Entitles you to 1 lb. **GROUND BEEF**

Saturday Only

**Eastern Bacon**

2 1/2-lb. pkgs. Cello-Wrapped at . . . . . 25c

**Eastern Picnic**

**HAMS, lb. 19 1/2c**

**VEGETABLE SHORTENING OR LARD**

2 lbs. 25c or 4 lbs. . . . . 49c

**Pure Ground Beef, Limit 3 lbs. to customer . . . 10c**

**Pork Specials**

LEAN SHOULDER ROAST, LB. 15c

PORK STEAKS . . . . . LB. 17 1/2c

PORK CHOPS . . . . . LB. 22 1/2c

PORK LIVER . . . . . 2 LBS. 25c

LINK SAUSAGE . . . . . LB. 15c

BABY BEEF LIVER . . . . . LB. 15c

**Veal Specials**

VEAL ROAST, LEAN . . . . . LB

VEAL STEAK . . . . . LB. 15c

VEAL CHOPS . . . . . LB. 19 1/2c

Boneless Beef Cubes, lean, lb. 17 1/2c

Corned Beef—Sugar Cured, lb. 15c

Meat Market operated and managed by A. D. Kester

**S. W. FRONT AND YAMHILL MARKET** In Steve Herman's Market

# PURITAN MARKET

THIRD  
NORTHWEST CORNER THIRD AND YAMHILL

**GROCERY PRICES EFFECTIVE SATURDAY AND MONDAY**

ORE. MT. VERNON OR GOLDEN KEY  
**MILK** TALL CANS 4 for 26c

CALIFORNIA  
**BEANS** SMALL WHITE 5 lbs. 25c

**EGGS** EXTRAS MEDIUM 26c EXTRAS LARGE 30c

THE THRIFT SPREAD FOR BREAD  
**NUCOA** 1-LB. PKG. 18c 2-LB. PKG. 35c

SEA BREEZE  
**CLAMS** MINCED 1/2s 10c

FANCY CHINA ELON  
**RICE** 3 lbs. 17c

**COTTAGE CHEESE** . . . lb. 8c  
**CHEESE** MILD AMERICAN FULL CREAM Lb. 19c

**BAKER'S COCOA** . . . 8-oz. tin 9c

**SPAGHETTI** FRANCO AMERICAN 3 No. 1 TINS 25c

**CAKE FLOUR** Sno-Sheen, another Pillsbury Fine Product. 2 3/4-lb. pkg. 25c  
**MATCHES** True American, a diamond match carton of 6 17c

**COFFEE** Jim Dandy, packed by S. & W. Ground to your order. Pound 15c  
**LESLIE SALT** 2 large shakers and a balloon free, all you pay is 15c

**Butter at Lowest Prices in Town**

**TEA** TENDER LEAF ORANGE PEKOE 3 1/2 oz. pkg. 14c — 7 oz. pkg. 27c

**JUICE ORANGES** GENEROUS 2 DOZ. 25c

**SUNKIST LEMONS** EXTRA SPECIAL 18c DOZ.

SEEDLESS—NEW CROP  
**GRAPEFRUIT** . . . 7 for 25c

**LEG of PORK** CORN FED, pound 23c

**LEG of LAMB** Genuine Spring pound 24 1/2c

**POT ROAST** SELECT STEER BEEF, pound 15c

**MEAT DEPARTMENT**  
Open 8 a.m. to 6 p.m.  
By mutual agreement with our employees—our meat dept. will observe the hours of 8 A. M. to 6 P. M.

OUR OWN MAKE  
**Club Sausage** 15c Lb.

**Swiss Steak** CHOICE STEER BEEF, pound 24c

**Miracle Whip Salad Dressing**



Pt. Jar 23c  
Qt. Jar 35c

**ROLLED OATS**

Triangle Rolled Oats— 10 pound sack 41c

**FRESH FILLETS LING COD** 18c lb.

OREGON COAST—SILVERSIDE  
**SALMON** DARK RED MEAT HALF OR WHOLE 15c LB.

**HENS** Country Killed 17c lb. And Up

Frank C. Frederick

Frank C. Frederick, a Tigard resident who had owned and operated the Puritan Meat Market in the old Yamhill public market for many years, died of causes related to age Thursday in a Portland hospital.

No service will be held. Mr. Frederick was 82.

He was born Dec. 30, 1907, in Denver. He moved to Portland when he was about 2 and had lived in Tigard for 53 years.

Mr. Frederick began working at the Yamhill market as a teen-ager. He was associated with the Puritan Meat Market for 38 years until his retirement in 1975.

Survivors include his wife of 31 years, Katherine of Tigard; daughter, Sharon, and son, Neil, both of Beaverton; five grandchildren, and five great-grandchildren.

Private interment will be in Willamette National Cemetery.

OREGONIAN August 5, 1990

W. E. KIDDER SPECIALS.

Acres, farms and city property. The best of terms offered. Write for price list or come out and see me.

W. E. KIDDER  
Phone 32. Carlton, Ore.

ACREAGE, fruit ranches, farms, at bed-rock prices. Write or call for list.  
GEO G. HANCOCK,  
Forest Grove, Ore.

101 Farms and Land for Sale.

WRITE for map of Western Washington showing locations of land. Low price and easy terms offered to settlers. Weyerhaeuser Logged Off Land Co. Tacoma, Washington.

Real Estate for Sale

105 Houses for Sale.

HOME BUILDERS.

I will build on your lot or let you select a lot in any part of the city, 4 or 5 room house, according to your own plans, for as little as \$150 cash.

T. C. MILLER

OPEN EVENINGS.  
419-21 Board of Trade Bldg.  
BROADWAY 2612.

We Are the Owners

of this little house on a big lot 65x210, located within walking distance of East Gilsan car, just outside the city limits. City water, gas and lights available. No. city taxes to pay. Look at the price, \$890. Pay \$25 and move in. See owners, Comte & Kohlman, BR 6550. Open evenings. 416-18-20-22 Spaulding bldg.

REAL ESTATE; insurance; rentals; also have some good values in city and farm property. Open 9 to 1 Sunday.  
CHAS. H. MORRIS CO.,  
320 Lumbermens bldg. BR 2224.

RAY R. GILMORE

WE will finance and build your home on your lot or ours.  
409 Raleigh Bldg. BR 5303.  
Open till 9 p. m.

BARGAIN—\$3800—8-room house, double garage, large lot, beautiful flowers; house has just been all refinished inside and out. Come and see for yourself. Owner, 247 E. 77th N. Tabor 5848.

UNIVERSITY PARK BUNGALOW.  
5 rooms, fireplace, furnace; \$4500; small down payment to responsible party. Call owner, 775 Amherst. EM 1207.

EAST SIDE BARGAIN.  
Six rooms and sleeping porch, partly furnished, 313 Hancock st.; price \$3100, \$400 down, balance easy terms. Phone owner, WA 6413.

\$2000, Easy Terms

6 room house, modern, close in. Nelson R. E., 248 Stark. BR 5549.

PORTLAND TELEGRAM  
1924