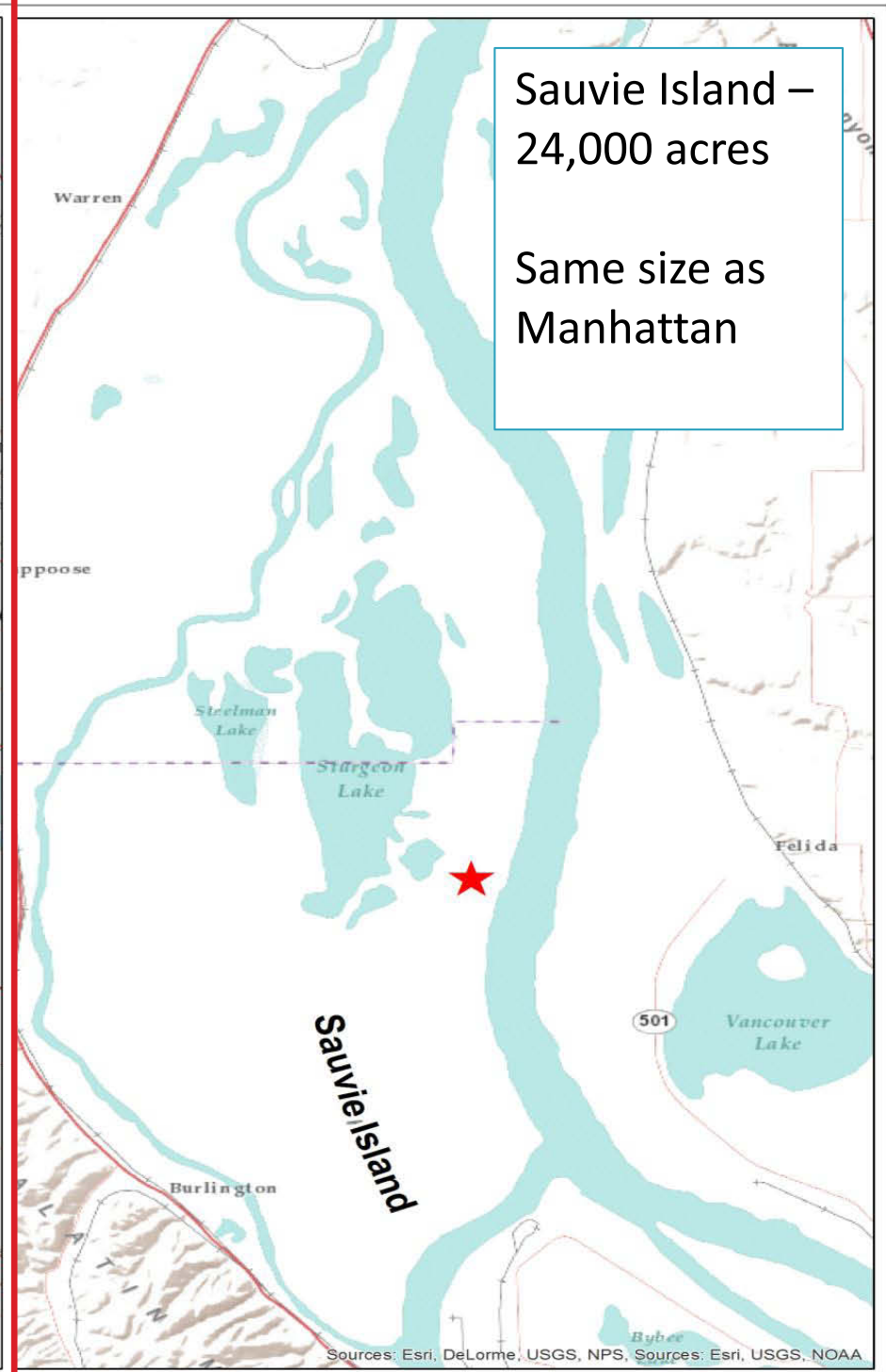


Sturgeon Lake

A man wearing a brown hat, sunglasses, a dark jacket, and a bright orange safety vest stands in a field of tall grass. He is looking down at a small device in his hands. In the background, a large body of water (Sturgeon Lake) stretches across the horizon under a cloudy sky. The text 'Sturgeon Lake' is overlaid in the top left, and descriptive text is overlaid in the center and bottom left.

Largest tidally-influenced
freshwater lake in the
Columbia Basin

14 Miles from City Hall



Why Care?

- 800,000 visitors per year
- Visitors come for the 4-B's: Beaches, Bicycling, Birding and Boating
- 2 million users live within an hour's drive
- TriMet makes Island accessible to all



Pelicans on Sturgeon Lake



180,000 winter waterfowl



Fws.gov

Coho salmon



The Problem

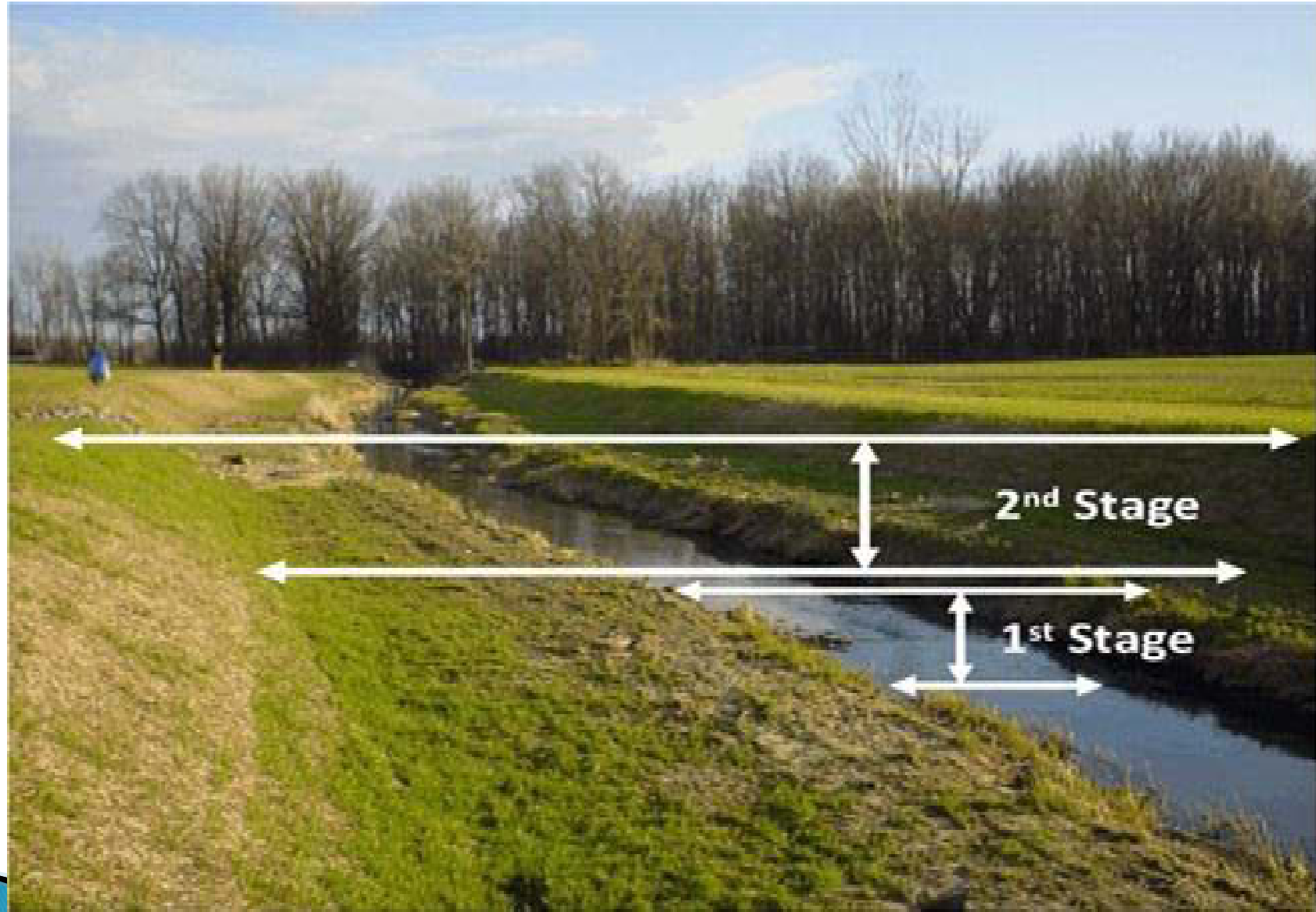


Two failing culverts and sand plug restrict flow through Dairy Creek

Proposed Fix

- ▶ **Catch and control sediment/debris** in Dairy Creek at confluence with Columbia River
 - debris boom, eddy control structures and sand collection basin
- ▶ **Reconstruct Dairy Creek channel** to restore flows for fish passage
- ▶ **Replace two failed culverts** at Reeder Road with 42 foot concrete arch spans or bridge

Two-Stage Channel concept



*photo from Ohio

New Culverts / Bridge

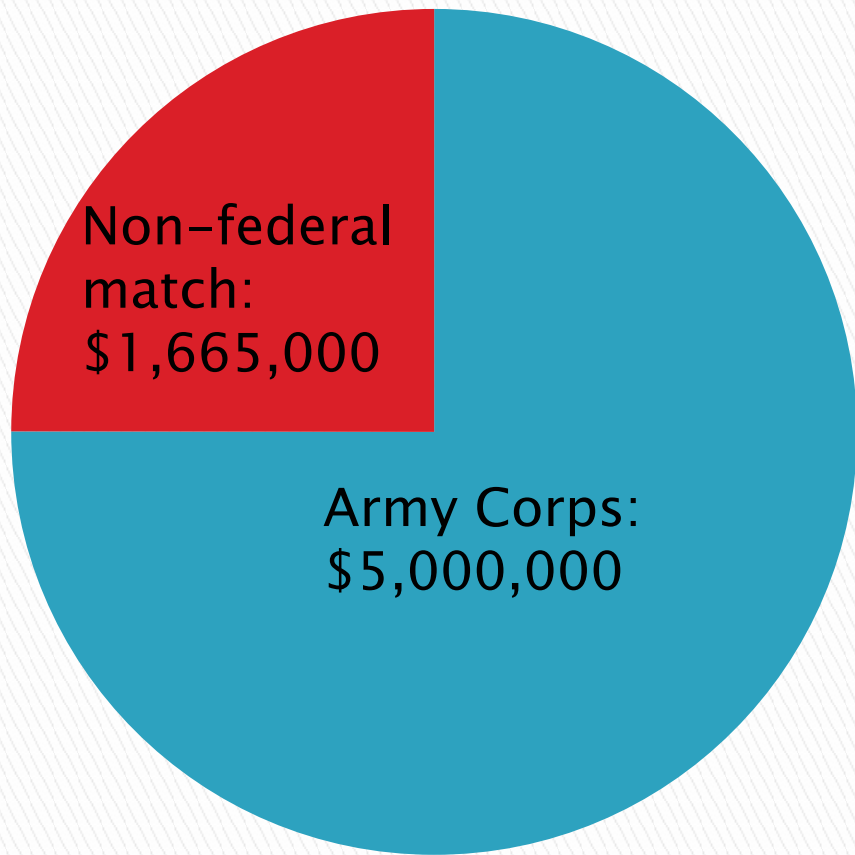


Timeline

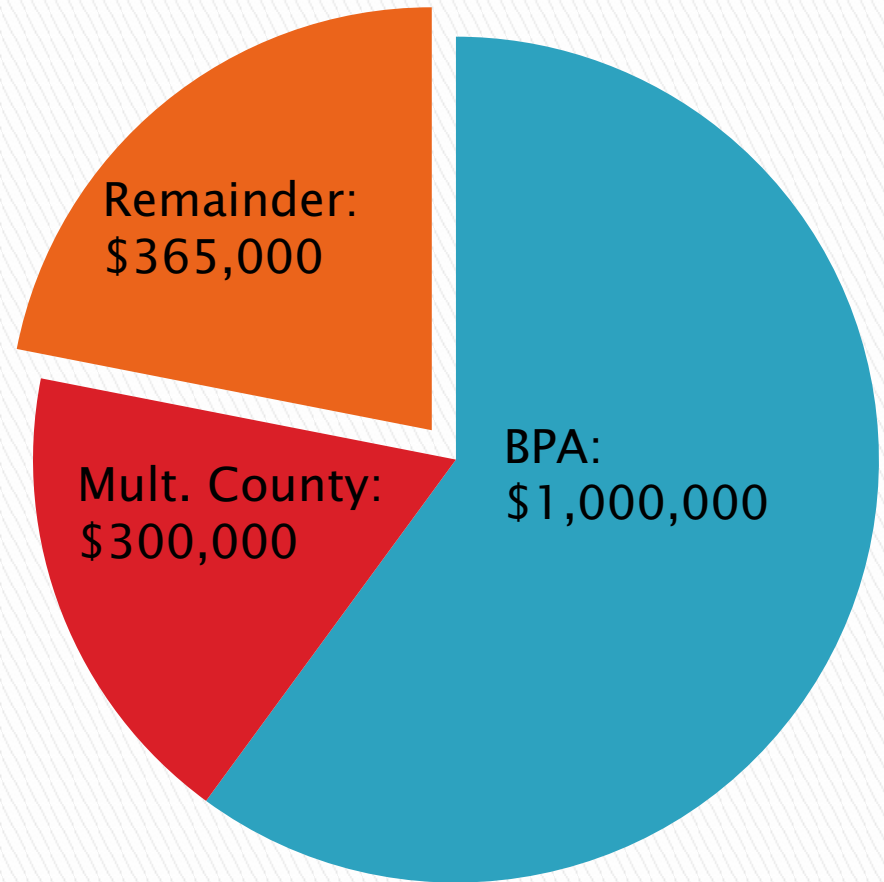
| Activity | End Date |
|---|-----------------|
| Feasibility Plan | April 2014 |
| Sign Agreement - WMSWCD/Corps | June 2014 |
| Final Design – Arched culvert | Feb 2015 |
| Award Construction bid – Arched culvert | April 2015 |
| Construction – Arched culvert | Oct 2015 |
| Final Design - Channel | Jan 2016 |
| Award Construction bid - Channel | Mar 2016 |
| Construction - Channel | Oct 2016 |
| Project Finished | July 2017 |

Funding

| Fund | Thru FY13 | FY14 | FY15 | FY16 | FY17 | TOTALS |
|-----------------------|-----------|-----------|-------------|-------------|----------|-------------|
| Fed Allocation | \$983,000 | \$70,000 | \$1,452,000 | \$2,405,988 | \$83,000 | \$4,993,988 |
| | | | | | | |
| Non-Fed (Cash) | \$0 | \$306,000 | \$546,012 | \$350,000 | \$0 | \$1,202,012 |
| Non-Fed (Real Estate) | \$0 | \$0 | \$418,000 | \$0 | \$0 | \$418,000 |
| Non-Fed (WIK) | \$0 | \$45,000 | \$0 | \$0 | \$0 | \$45,000 |
| | | | | | | |
| TOTAL Non-Fed Match | \$0 | \$351,000 | \$964,012 | \$350,000 | \$0 | \$1,665,012 |
| | | | | | | |
| TOTAL Project Cost | \$983,000 | \$421,000 | \$2,416,012 | \$2,755,988 | \$83,000 | \$6,659,000 |

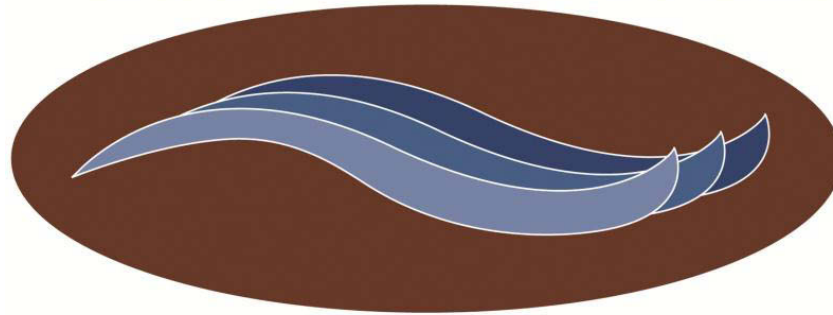


Federal vs Non-fed



Potential Sources:
OWEB, Metro, Grand
Ronde Tribes, Ducks
Unlimited, Oregon
Wildlife

WEST MULTNOMAH



SOIL & WATER CONSERVATION DISTRICT

Dick Springer, District Manager, 503.238.7445, ext. 106,
dick@wmswcd.org.

Scott Gall, Rural Conservationist, 503.238.4775, ext. 105,
scott@wmswcd.org.

Carolyn Lindberg, Communications Coordinator,
503.238.4775, ext. 101, carolyn@wmswcd.org.