



THE FAIR-HAIRED DUMBBELL OPTION 2

11 NE MARTIN LUTHER KING JR. BLVD.

04/01/2014



THE FAIR-HAIRED DUMBBELL OPTION 2

11 NE MARTIN LUTHER KING JR. BLVD.

04/01/2014



THE FAIR-HAIRED DUMBBELL OPTION 2

11 NE MARTIN LUTHER KING JR. BLVD.

04/01/2014

GUERRILLA DEVELOPMENT

**THE FAIR-HAIRED
DUMBBELL**

BLOCK 76
11 E. BURNSIDE ST.
PORTLAND, OREGON
97214

PRELIMINARY
OPTION 2

DATE: MARCH 11, 2014

DRAWN: BSC

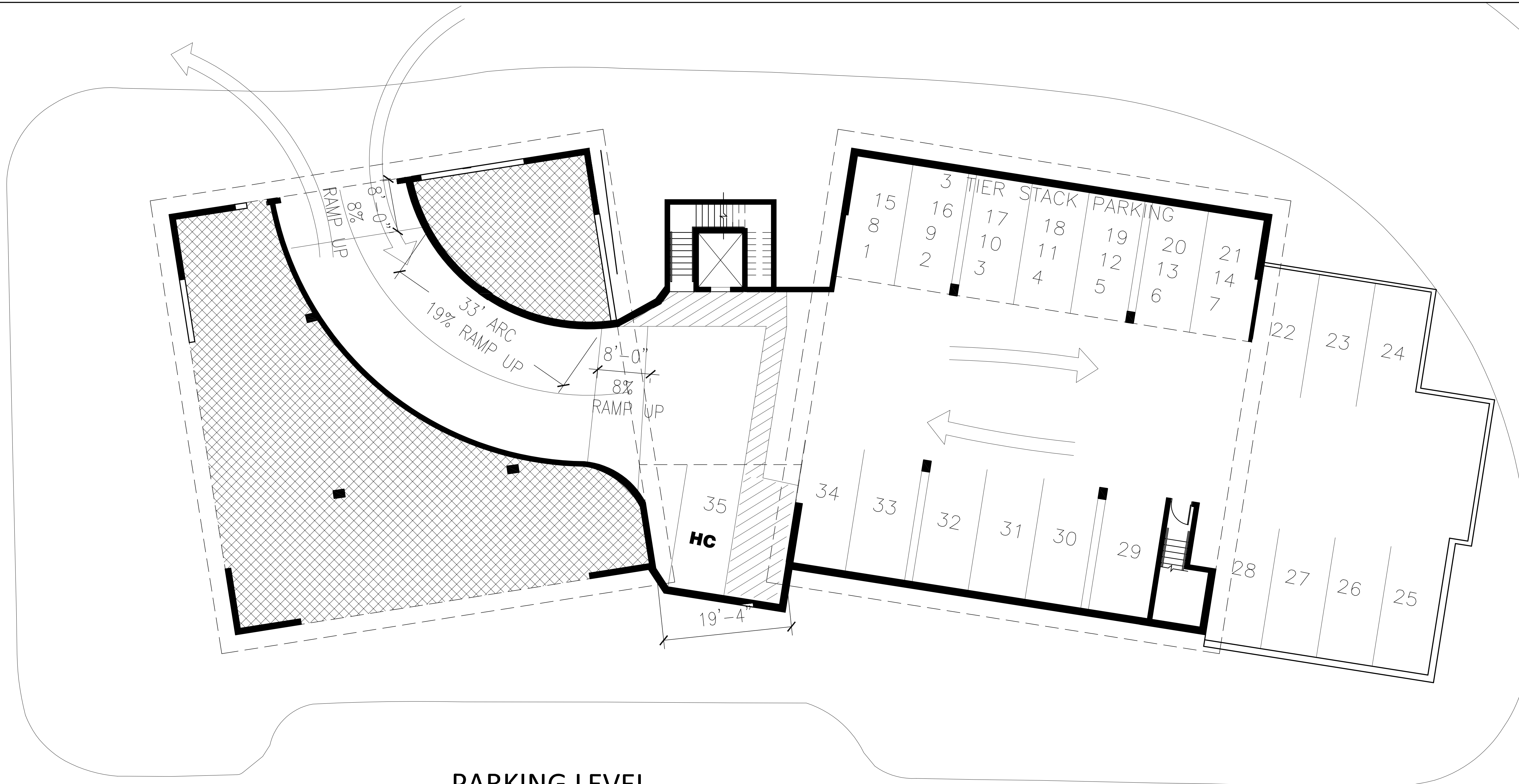
CHECKED: BJS

APPROVED:

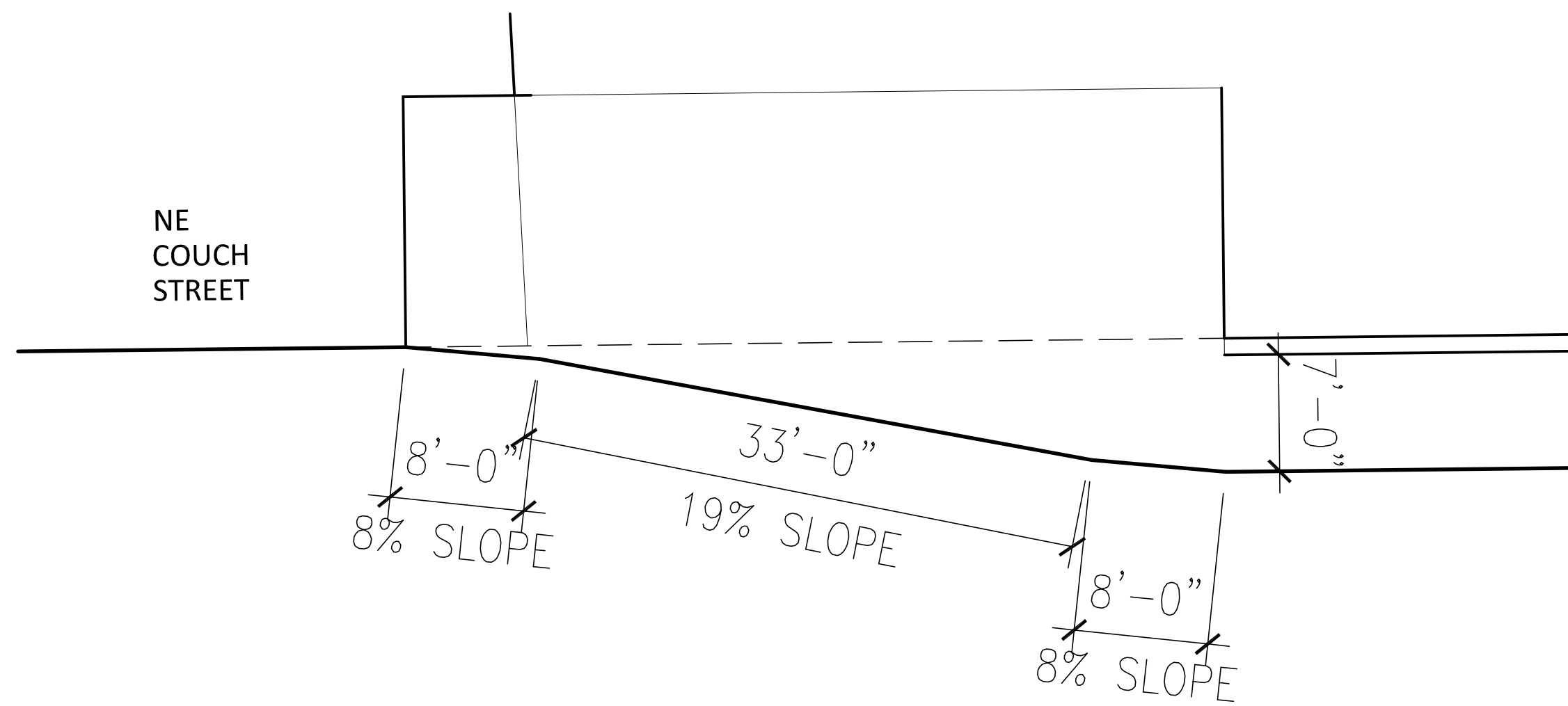
REVISIONS:

SCALE: 1/8" = 1'-0"

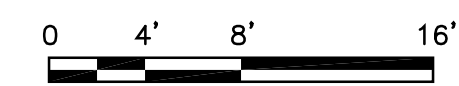
LOWER LEVEL
PLAN



PARKING LEVEL

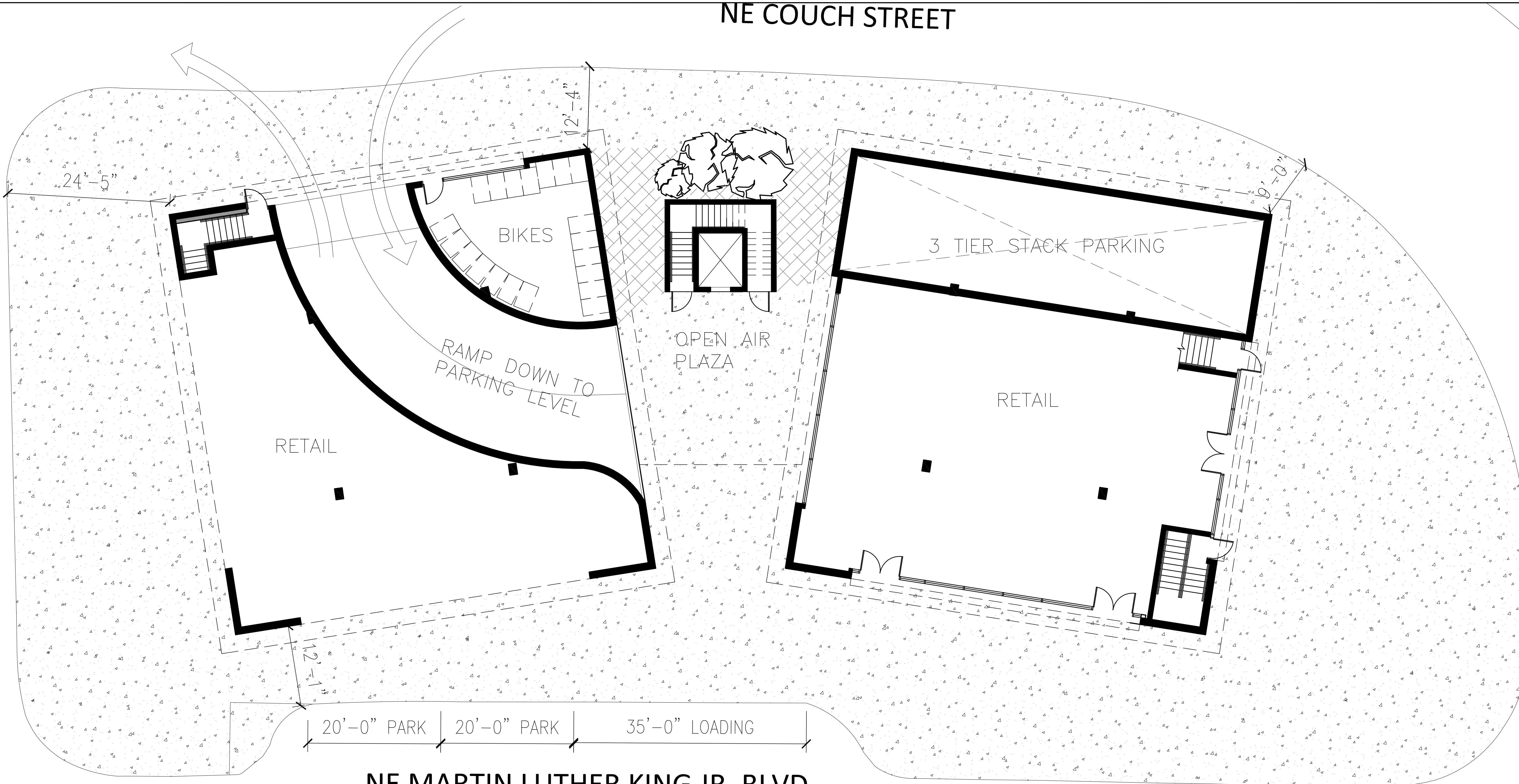


1 LOWER LEVEL PLAN
1/8" = 1'-0" @ 22X34, 1/16" = 1'-0" @ 11X17

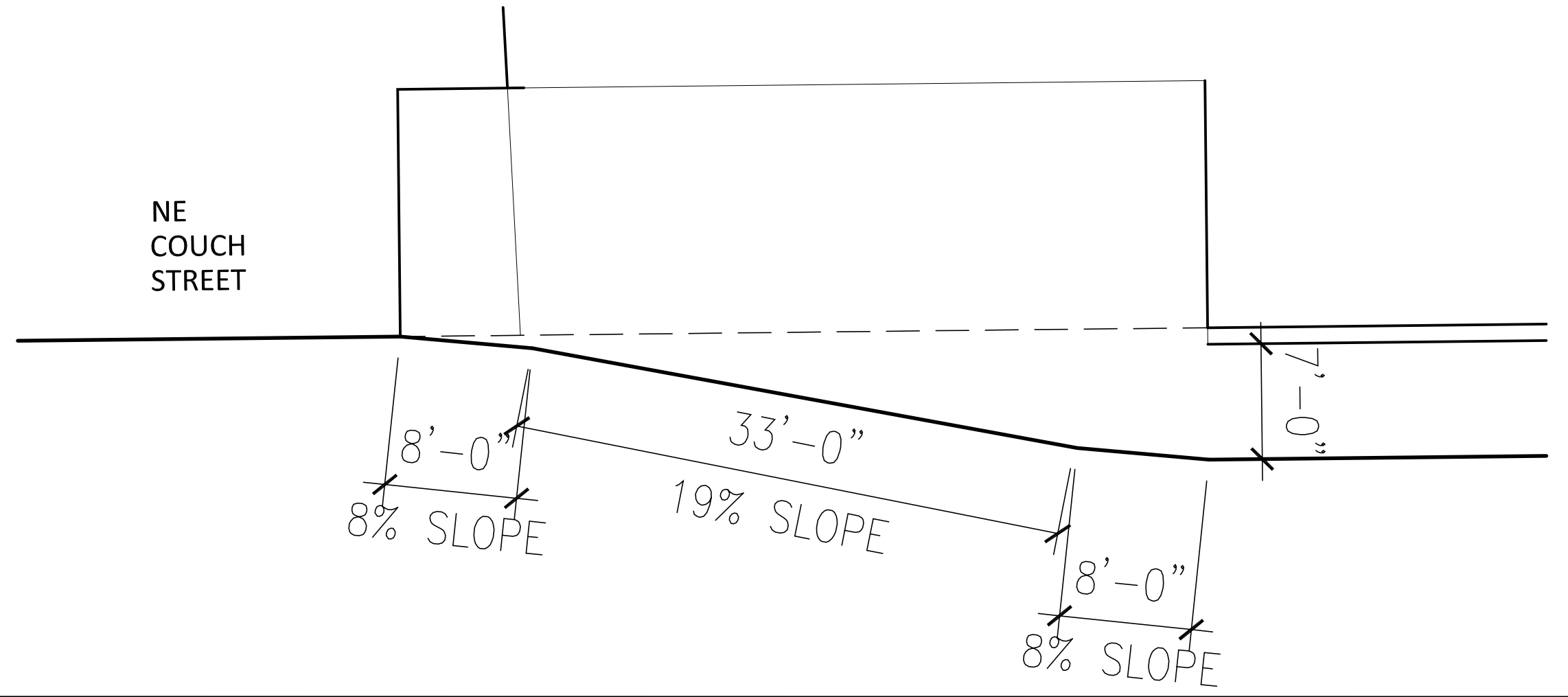


NE COUCH STREET

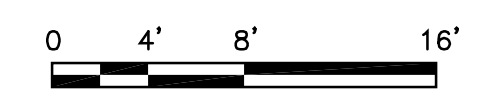
E BURNSIDE STREET



NE MARTIN LUTHER KING JR. BLVD



1 FIRST FLOOR PLAN
 1/8" = 1'-0" @ 22X34, 1/16" = 1'-0" @ 11X17



BRETT SCHULZ ARCHITECT

1111 E Burnside St., #303
Portland, Oregon 97214
503-222-9099

brett@brettschulz.com
www.brettschulz.com

GUERRILLA DEVELOPMENT

THE FAIR-HAIRED DUMBBELL

BLOCK 76
11 E. BURNSIDE ST.
PORTLAND, OREGON
97214

PRELIMINARY
OPTION 2

DATE: MARCH 11, 2014

DRAWN: BSC

CHECKED: BJS

APPROVED:

REVISIONS:

SCALE: 1/8" = 1'-0"

FIRST FLOOR
PLAN

BRETT SCHULZ
ARCHITECT

1111 E Burnside St., #303
Portland, Oregon 97214
503-222-9099

brett@brettschulz.com
www.brettschulz.com

GUERRILLA DEVELOPMENT

**THE FAIR-HAIRED
DUMBBELL**

BLOCK 76
11 E. BURNSIDE ST.
PORTLAND, OREGON
97214

PRELIMINARY
OPTION 2

DATE: MARCH 11, 2014

DRAWN: BSC

CHECKED: BJS

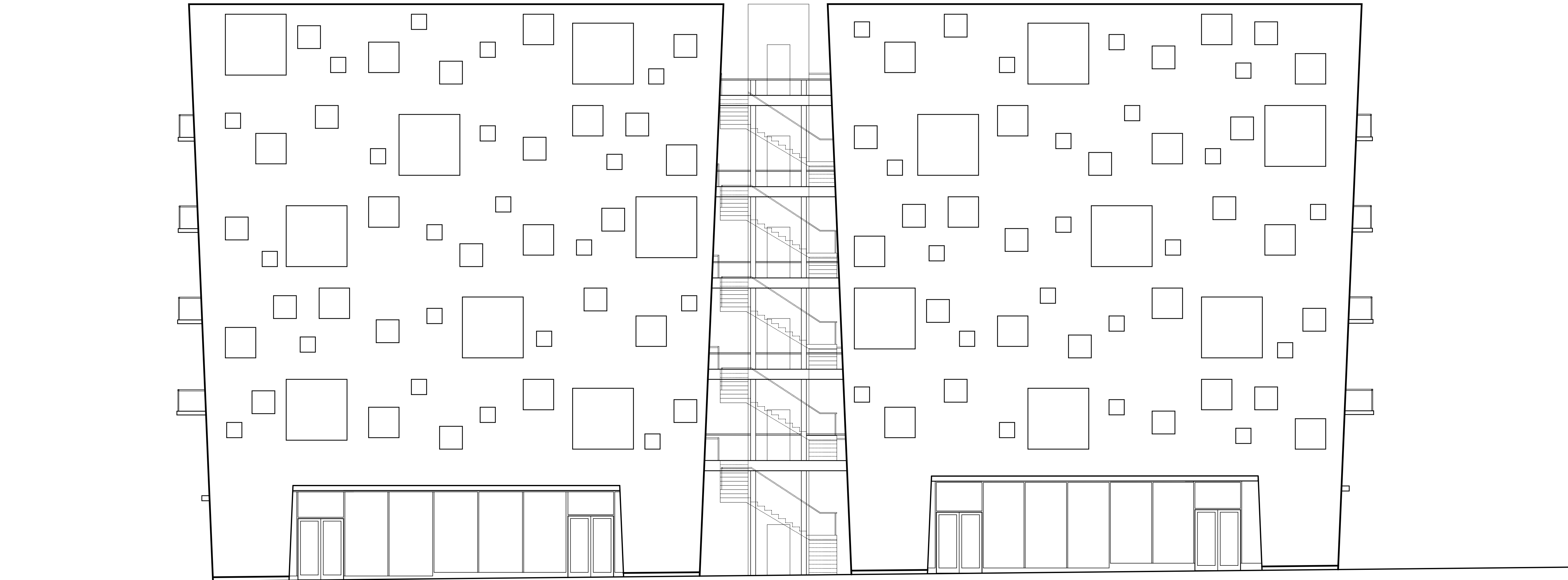
APPROVED:

REVISIONS:

-

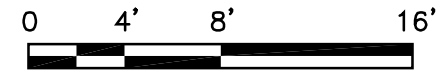
SCALE: 1/8" = 1'-0"

EAST ELEVATION



1 EAST ELEVATION

1/8" = 1'-0" @ 22X34, 1/16" = 1'-0" @ 11X17



BRETT SCHULZ
ARCHITECT

1111 E Burnside St., #303
Portland, Oregon 97214
503-222-9099

brett@brettschulz.com
www.brettschulz.com

GUERRILLA DEVELOPMENT

**THE FAIR-HAIRED
DUMBBELL**

BLOCK 76
11 E. BURNSIDE ST.
PORTLAND, OREGON
97214

PRELIMINARY
OPTION 2

DATE: MARCH 11, 2014

DRAWN: BSC

CHECKED: BJS

APPROVED:

REVISIONS:

-

-

-

-

-

-

-

-

-

SCALE: 1/8" = 1'-0"

EXTERIOR
ELEVATIONS



1 WEST ELEVATION
1/8" = 1'-0" @ 22X34, 1/16" = 1'-0" @ 11X17

