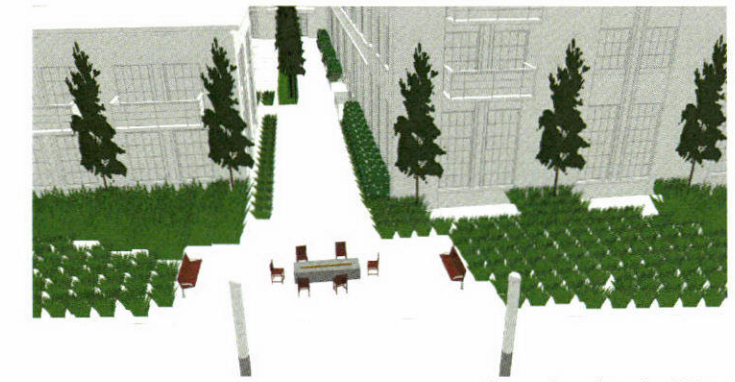


view from northeast



view of path to building

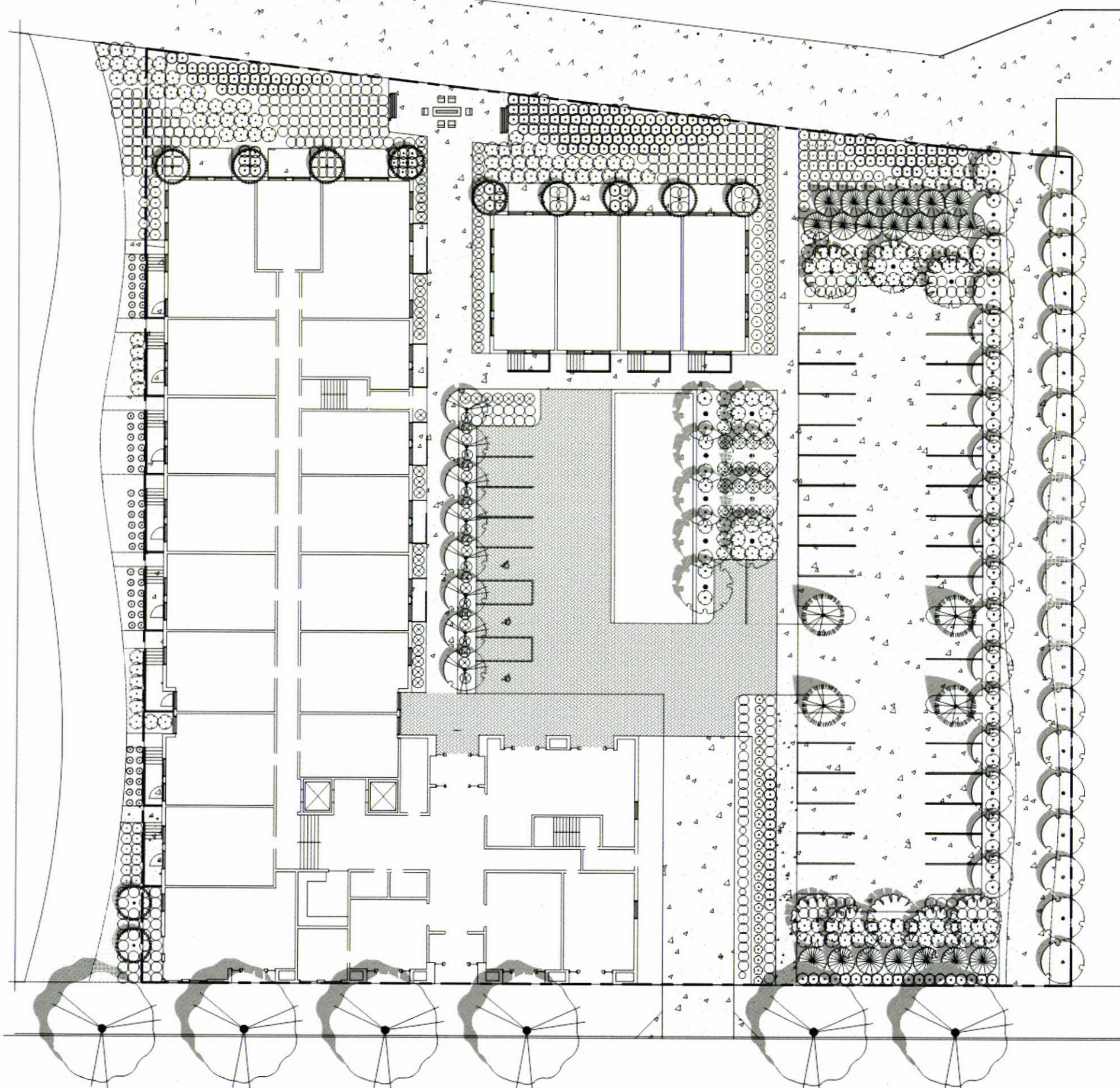


view of path to front avenue



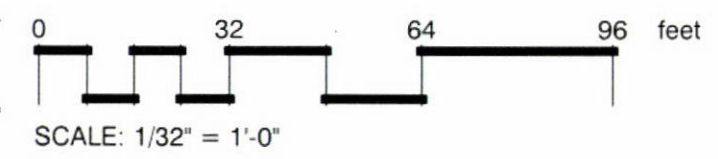
view from north





PLANT SCHEDULE

TREES		BOTANICAL NAME / COMMON NAME	CONT	GAL	SIZE	QTY	
		Acer rubrum - Armstrong / Armstrong Red Maple	-	2"	14 - 16	8	
		Arbutus x 'Marina' / Arbutus Multi-Trunk	15 GAL		8'-10'	11	
		Calocedrus decurrens / Incense Cedar	-		8'-10'	20	
		Cornus nuttallii - Eddie's White Wonder / Eddie's White Wonder Dogwood	-	2"	14 - 16	8	
		Fraxinus latifolia / Oregon Ash	-	2"	14 - 16	9	
		Quercus robur - Regal Prince / Regal Prince English Oak	-	2"	14 - 16	38	
		Quercus shumardii / Shumard Red Oak	-	3.5	18-20	6	
		Sequoia sempervirens / Coast Redwood	-		10-12	4	
SHRUBS		BOTANICAL NAME / COMMON NAME	SIZE	FIELD2	FIELD3	QTY	
		Calamagrostis x acutiflora - Avalanche / Feather Reed Grass	1 GAL			62	
		Deschampsia californica / California Hair Grass	1 GAL			204	
		Ilex glabra / Inkberry Holly	5 GAL			99	
		Mahonia aquifolium - Compacta / Compact Oregon Grape	1 GAL			344	
		Myrica californica / Pacific Wax Myrtle	5 GAL			59	
		Rhododendron yakusimanum - Prince / Yaku Prince Rhododendron	24"			16	
		Ribes sanguineum / Red Flowering Currant	1 GAL			73	
		Symphoricarpos albus / Common White Snowberry	1 GAL			173	
		Taxus beccata / English Yew	5 GAL			28	
GROUND COVERS		BOTANICAL NAME / COMMON NAME	CONT	FIELD2	FIELD3	SPACING	QTY
		Gaultheria shallon - Snoqualmie Pass / Dwarf Salal	1 GAL				1,715 sf
		Polystichum munitum / Western Sword Fern	1 GAL				965 sf





freemont bridge







