



VIEW FROM SOUTHWEST

MIRACLES CENTRAL

PORTLAND, OREGON

CARLETON HART
ARCHITECTURE 

04.17.2014



VIEW FROM SOUTHEAST

MIRACLES CENTRAL

PORTLAND, OREGON

CARLETON HART
ARCHITECTURE 

04.17.2014



VIEW FROM NORTHWEST

MIRACLES CENTRAL

PORTLAND, OREGON

CARLETON HART
ARCHITECTURE 

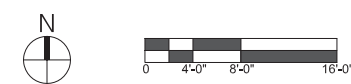
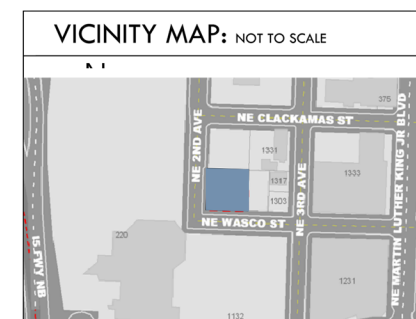
04.17.2014

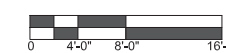


BIRD'S EYE VIEW OF COURTYARD

MIRACLES CENTRAL

PORTLAND, OREGON



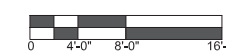


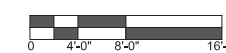
SECOND FLOOR PLAN

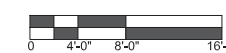
MIRACLES CENTRAL

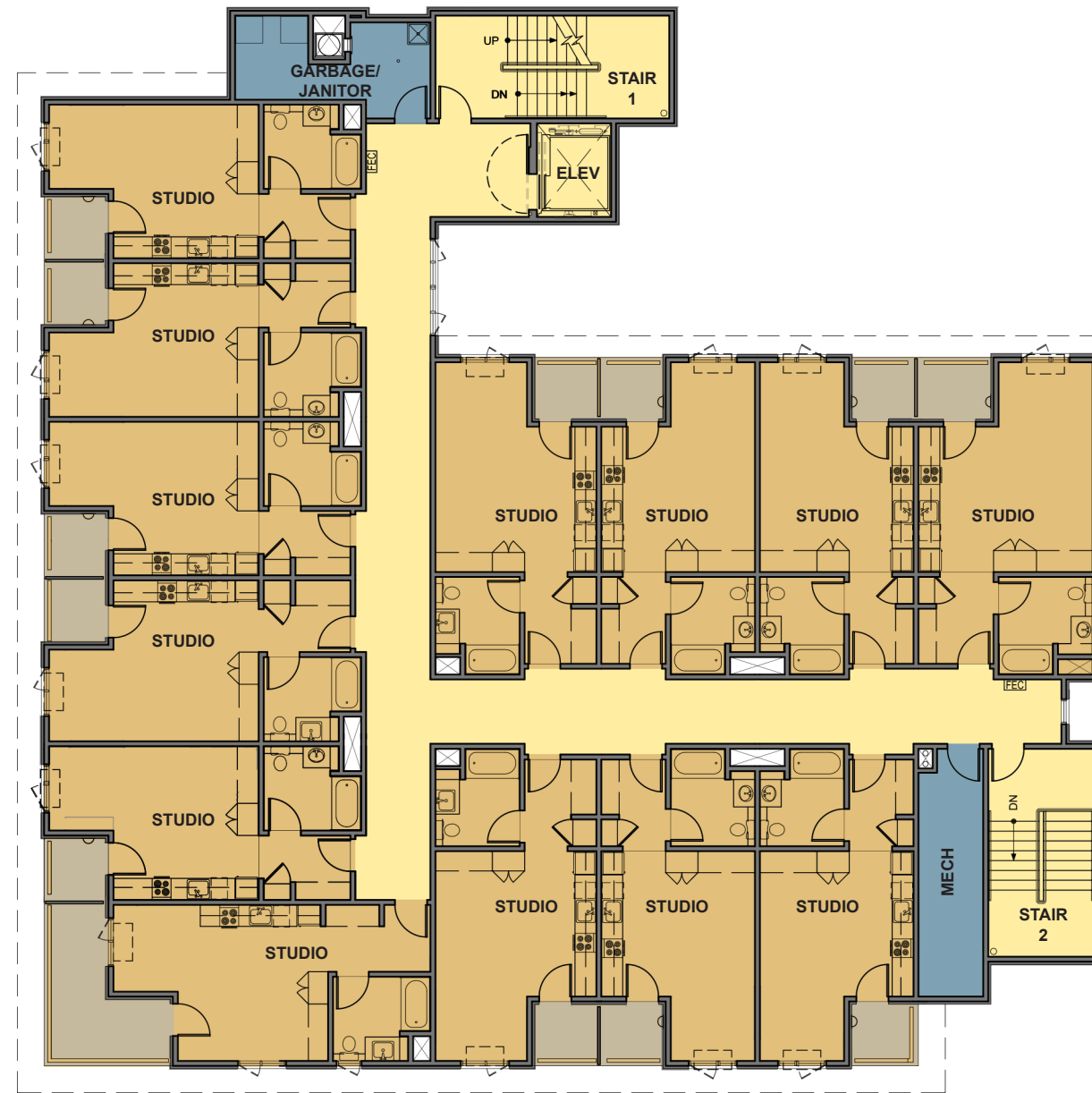
PORTLAND, OREGON

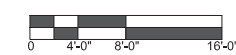
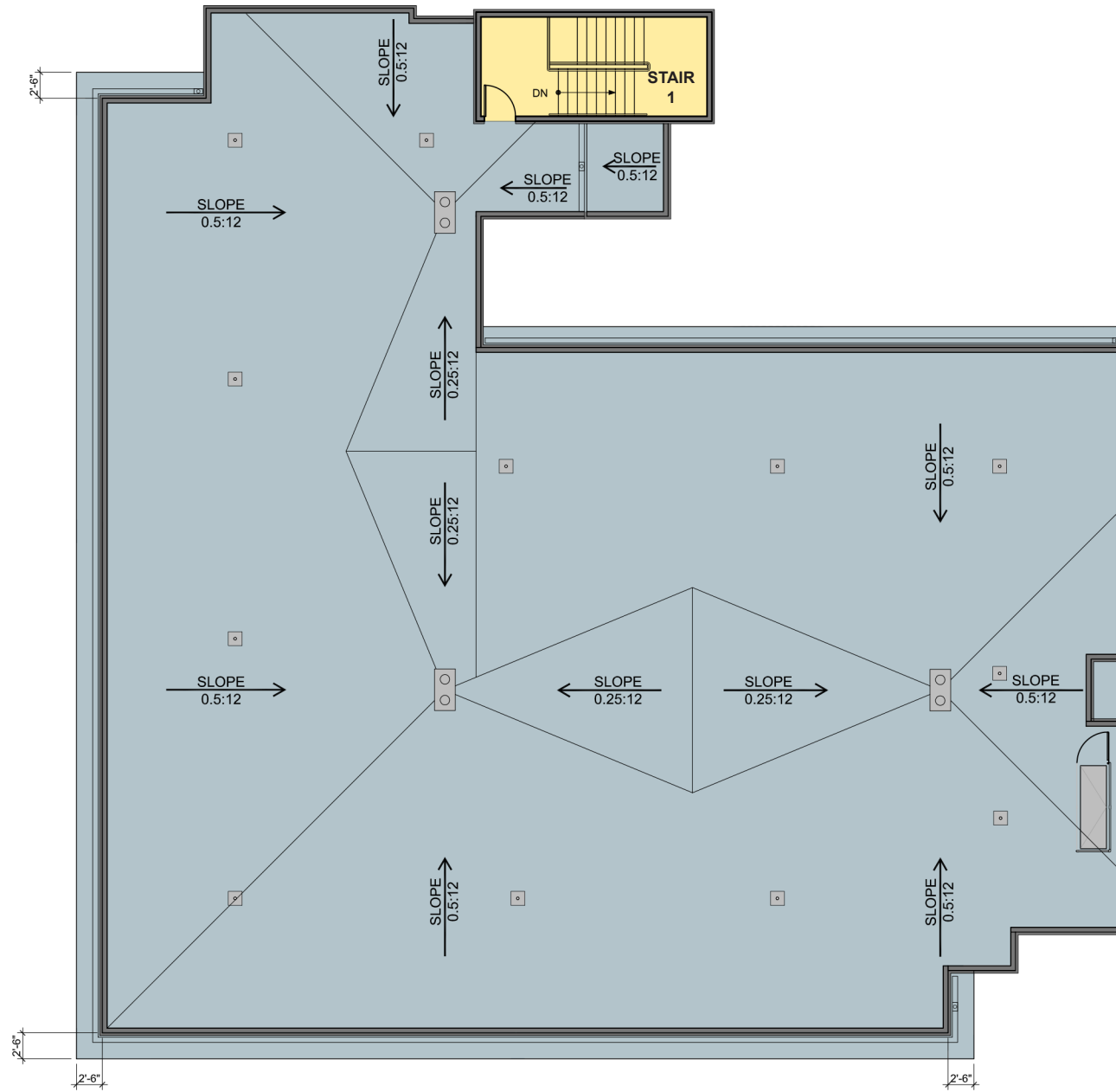
CARLETON HART
ARCHITECTURE 







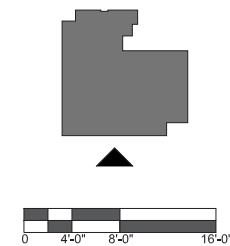






ENLARGED ELEVATION KEY NOTES

- 1 NORMAN BRICK VENEER - COLOR 1
- 2 NORMAN BRICK VENEER - COLOR 2
- 3 PAINTED STEEL ENTRANCE CANOPY
- 4 FIBER CEMENT PANEL SIDING
- 5 FIBER CEMENT LAP SIDING - 6" EXPOSURE
- 6 ALUMINUM STOREFRONT SYSTEM
- 7 POWDER COATED STEEL RAILING
- 8 OVERHEAD DOOR AT TRASH COLLECTION (WEST ELEVATION ONLY)
- 9 DARK BRONZE COMMERCIAL GRADE VINYL CASEMENT WINDOW
- 10 PTHP WITH ARCHITECTURAL SCREEN, TYP.
- 11 FIBERGLASS PATIO DOOR
- 12 PREFINISHED SHEET METAL EAVE, TYP.
- 13 CONCRETE WALL
- 14 EXTERIOR HOLLOW METAL DOOR

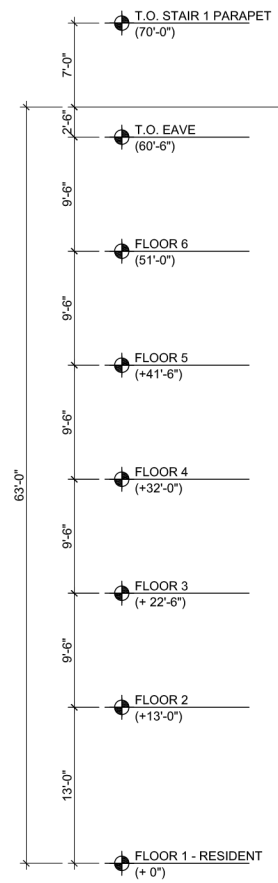


ELEVATION - SOUTH

MIRACLES CENTRAL

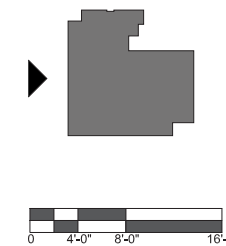
PORTLAND, OREGON

CARLETON HART
ARCHITECTURE



ENLARGED ELEVATION KEY NOTES

- 1 NORMAN BRICK VENEER - COLOR 1
- 2 NORMAN BRICK VENEER - COLOR 2
- 3 PAINTED STEEL ENTRANCE CANOPY
- 4 FIBER CEMENT PANEL SIDING
- 5 FIBER CEMENT LAP SIDING - 6" EXPOSURE
- 6 ALUMINUM STOREFRONT SYSTEM
- 7 POWDER COATED STEEL RAILING
- 8 OVERHEAD DOOR AT TRASH COLLECTION (WEST ELEVATION ONLY)
- 9 DARK BRONZE COMMERCIAL GRADE VINYL CASEMENT WINDOW
- 10 PTHP WITH ARCHITECTURAL SCREEN, TYP.
- 11 FIBERGLASS PATIO DOOR
- 12 PREFINISHED SHEET METAL EAVE, TYP.
- 13 CONCRETE WALL
- 14 EXTERIOR HOLLOW METAL DOOR



ELEVATION - WEST

MIRACLES CENTRAL

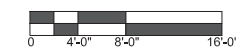
PORTLAND, OREGON

CARLETON HART
ARCHITECTURE



ENLARGED ELEVATION KEY NOTES

- 1 NORMAN BRICK VENEER - COLOR 1
- 2 NORMAN BRICK VENEER - COLOR 2
- 3 PAINTED STEEL ENTRANCE CANOPY
- 4 FIBER CEMENT PANEL SIDING
- 5 FIBER CEMENT LAP SIDING - 6" EXPOSURE
- 6 ALUMINUM STOREFRONT SYSTEM
- 7 POWDER COATED STEEL RAILING
- 8 OVERHEAD DOOR AT TRASH COLLECTION (WEST ELEVATION ONLY)
- 9 DARK BRONZE COMMERCIAL GRADE VINYL CASEMENT WINDOW
- 10 PTHP WITH ARCHITECTURAL SCREEN, TYP.
- 11 FIBERGLASS PATIO DOOR
- 12 PREFINISHED SHEET METAL EAVE, TYP.
- 13 CONCRETE WALL
- 14 EXTERIOR HOLLOW METAL DOOR



ELEVATION - EAST

MIRACLES CENTRAL

PORTLAND, OREGON

CARLETON HART
ARCHITECTURE



ENLARGED ELEVATION KEY NOTES

- 1 NORMAN BRICK VENEER - COLOR 1
- 2 NORMAN BRICK VENEER - COLOR 2
- 3 PAINTED STEEL ENTRANCE CANOPY
- 4 FIBER CEMENT PANEL SIDING
- 5 FIBER CEMENT LAP SIDING - 6" EXPOSURE
- 6 ALUMINUM STOREFRONT SYSTEM
- 7 POWDER COATED STEEL RAILING
- 8 OVERHEAD DOOR AT TRASH COLLECTION (WEST ELEVATION ONLY)
- 9 DARK BRONZE COMMERCIAL GRADE VINYL CASEMENT WINDOW
- 10 PTHP WITH ARCHITECTURAL SCREEN, TYP.
- 11 FIBERGLASS PATIO DOOR
- 12 PREFINISHED SHEET METAL EAVE, TYP.
- 13 CONCRETE WALL
- 14 EXTERIOR HOLLOW METAL DOOR

ELEVATION - NORTH AT COURTYARD

MIRACLES CENTRAL

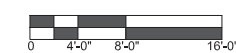
PORTLAND, OREGON

CARLETON HART
ARCHITECTURE 



ENLARGED ELEVATION KEY NOTES

- 1 NORMAN BRICK VENEER - COLOR 1
- 2 NORMAN BRICK VENEER - COLOR 2
- 3 PAINTED STEEL ENTRANCE CANOPY
- 4 FIBER CEMENT PANEL SIDING
- 5 FIBER CEMENT LAP SIDING - 6" EXPOSURE
- 6 ALUMINUM STOREFRONT SYSTEM
- 7 POWDER COATED STEEL RAILING
- 8 OVERHEAD DOOR AT TRASH COLLECTION (WEST ELEVATION ONLY)
- 9 DARK BRONZE COMMERCIAL GRADE VINYL CASEMENT WINDOW
- 10 PTHP WITH ARCHITECTURAL SCREEN, TYP.
- 11 FIBERGLASS PATIO DOOR
- 12 PREFINISHED SHEET METAL EAVE, TYP.
- 13 CONCRETE WALL
- 14 EXTERIOR HOLLOW METAL DOOR

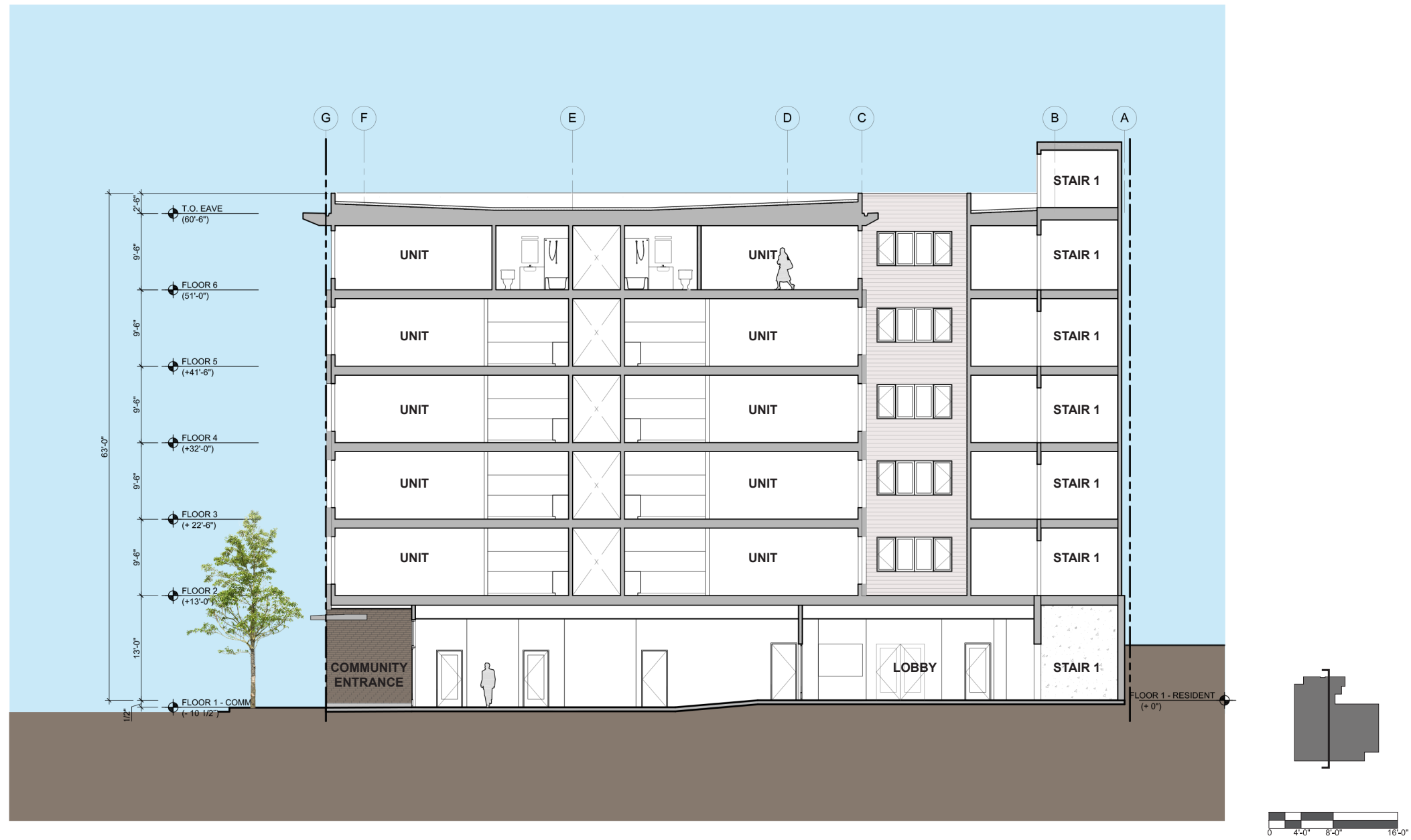


ELEVATION - NORTH

MIRACLES CENTRAL

PORTLAND, OREGON

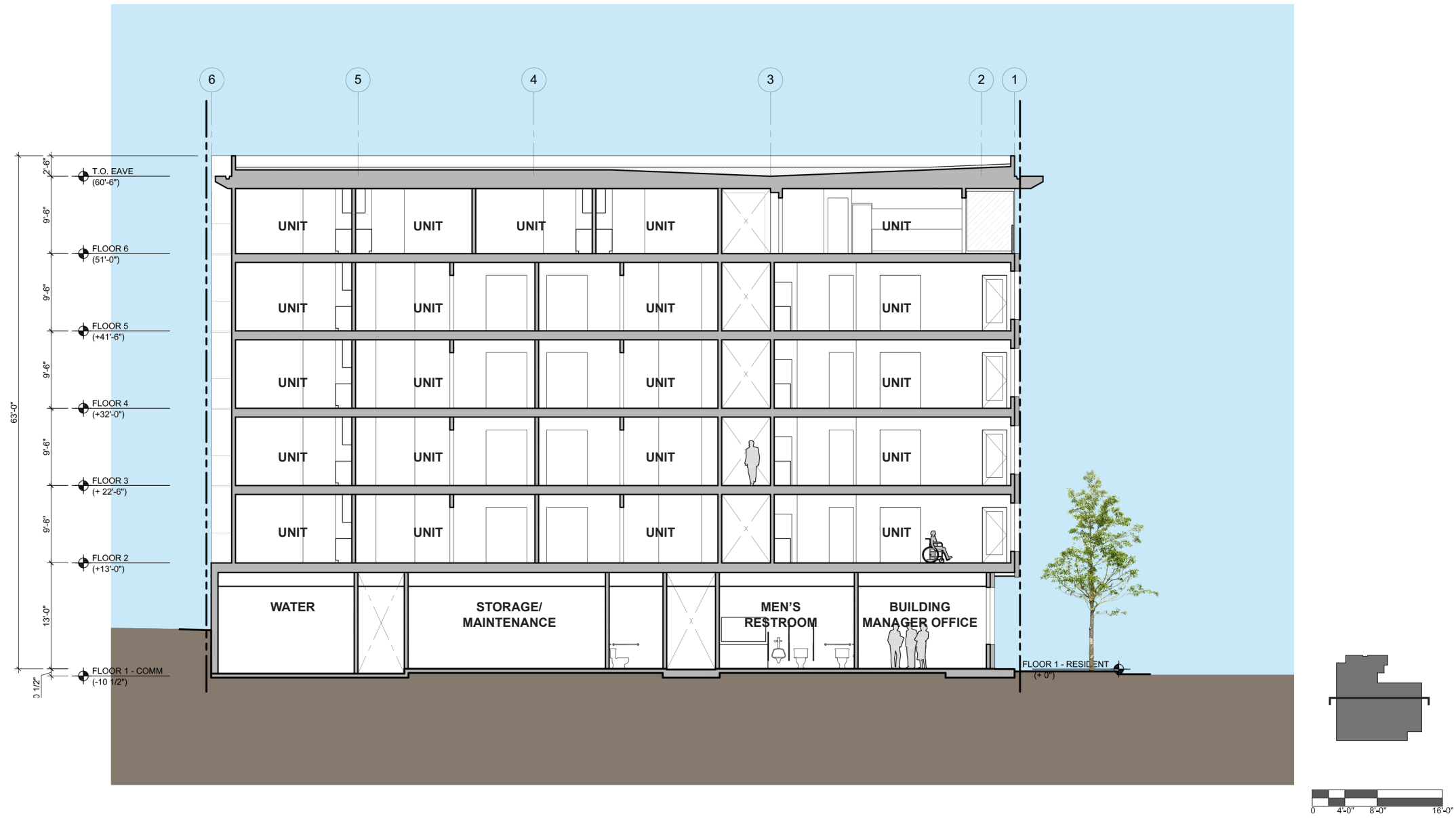
CARLETON HART
ARCHITECTURE



SECTION - NORTH/SOUTH

MIRACLES CENTRAL

PORTLAND, OREGON



SECTION - EAST/WEST

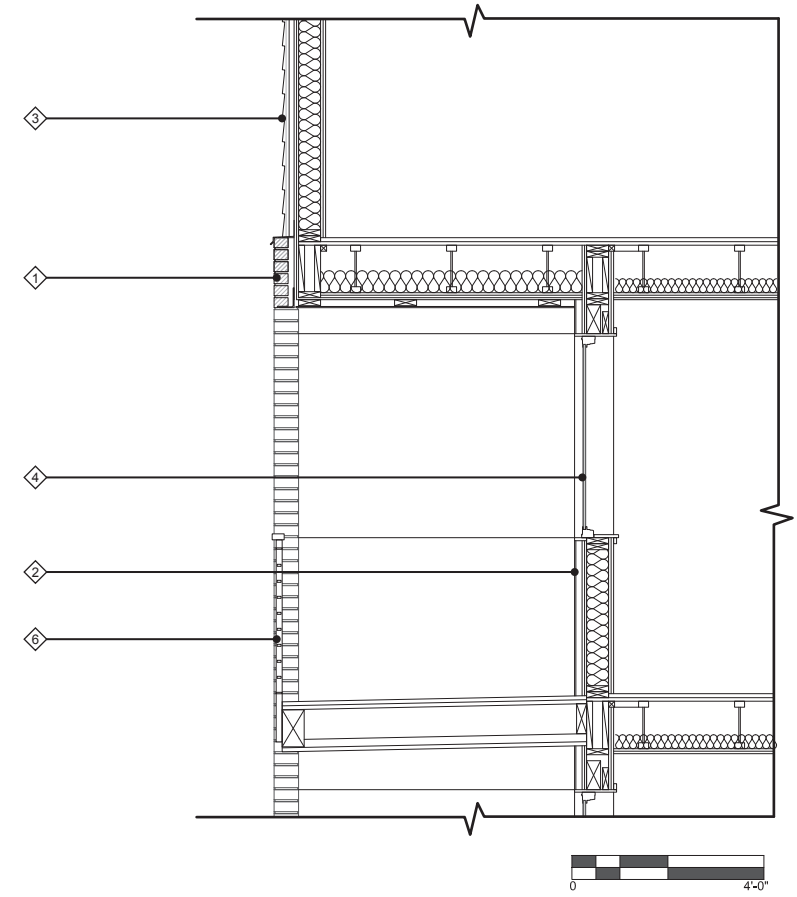
MIRACLES CENTRAL

PORTLAND, OREGON

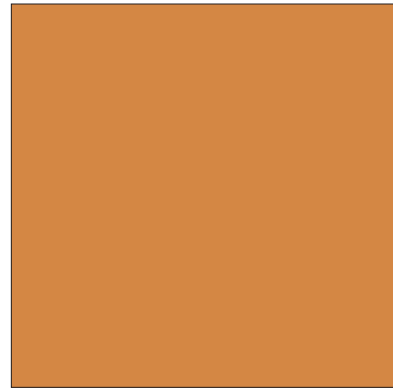


ENLARGED ELEVATION KEY NOTES

- ① NORMAN BRICK VENEER: MUTUAL MATERIALS - MEDITERRANEAN
- ② FIBER CEMENT PANEL SIDING
- ③ FIBER CEMENT LAP SIDING - 6" EXPOSURE
- ④ DARK BRONZE COMMERCIAL GRADE VINYL CASEMENT WINDOW
- ⑤ PTHP WITH ARCHITECTURAL SCREEN
- ⑥ POWDER COATED STEEL RAILING
- ⑦ FIBERGLASS PATIO DOOR



NORMAN BRICK VENEER - MEDITERRANEAN



FIBER CEMENT PANEL - MILLER PAINT 0984



FIBER CEMENT LAP - 6" EXPOSURE, MILLER PAINT 1265



WINDOWS & DOORS - DARK BRONZE



NORMAN BRICK VENEER - MAUNA LOA (AT FIRST FLOOR ONLY)