

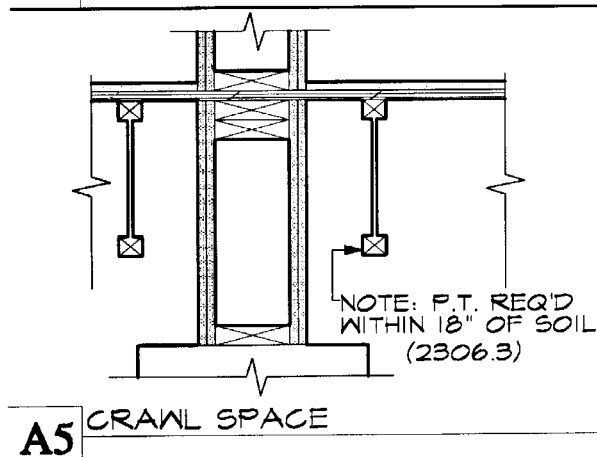
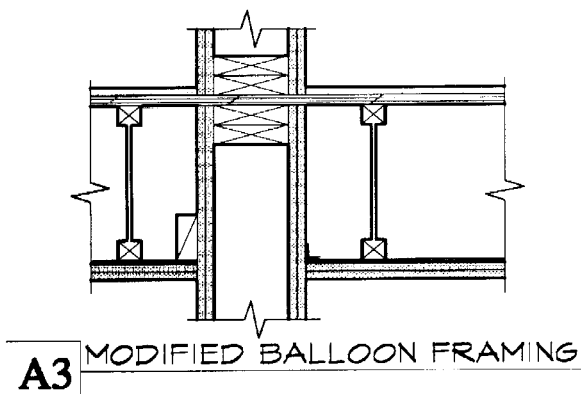
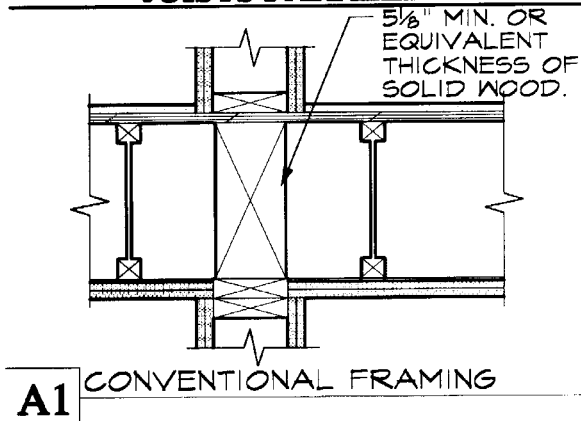
INDEX OF 1-HR WOOD FRAME DETAILS

AREA SEPARATION WALL CONDITIONS	EXTERIOR WALL / ROOF CONDITIONS
A1 CONVENTIONAL FRAMING A2 CONVENTIONAL FRAMING ⊥ A3 MODIFIED BALLOON FRAMING A4 MODIFIED BALLOON FRAMING ⊥ A5 CRAWL SPACE A6 CRAWL SPACE ⊥ A7 JOG IN ATTIC A8 ROOF / CEILING DETAIL A9 ROOF / CEILING DETAIL ⊥ A10 CLARIFIED TRUSS ⊥ A11 PARAPET A12 WALL JUNCTION W/ EXT. WALL A13 JOINING WALLS	D1 EAVE BLOCKING D2 TOP CHORD BEARING D3 ROOF OFFSET DETAIL D4 GABLE END D5 GABLE END D6 BOTTOM CHORD BEARING D7 BOTTOM CHORD BEARING
INTERIOR WALL CONDITIONS	
B1 CONVENTIONAL FRAMING ⊥ B2 MODIFIED BALLOON FRAMING ⊥ B3 MODIFIED BALLOON FRAMING ⊥ B4 DIFFERING HEIGHT JOIST ⊥ B5 CONVENTIONAL FRAMING B6 CORRIDOR FRAMING B7 MODIFIED BALLOON FRAMING B8 CORRIDOR DETAIL	1 HOUR WOOD FRAME DETAILS E1 DRAFT STOPPING EXCEPTION E2 DRAFT STOPPING-PARTY WALLS E3 SMALL PENETRATION DETAIL E4 FIRE BLK'G WALL DIAGRAM E5 RECESSED ITEMS
EXTERIOR WALL CONDITIONS	
C1 CONVENTIONAL FRAMING C2 CONVENTIONAL FRAMING ⊥ C3 MODIFIED BALLOON FRAMING C4 MODIFIED BALLOON FRAMING ⊥ C5 MODIFIED BALLOON FRAMING ⊥	MISCELLANEOUS DETAILS F1 CONVENTIONAL DUCT F2 ALTERNATE DUCT F3 ALTERNATE DUCT ⊥ F4 TUB / SHOWER DETAILS

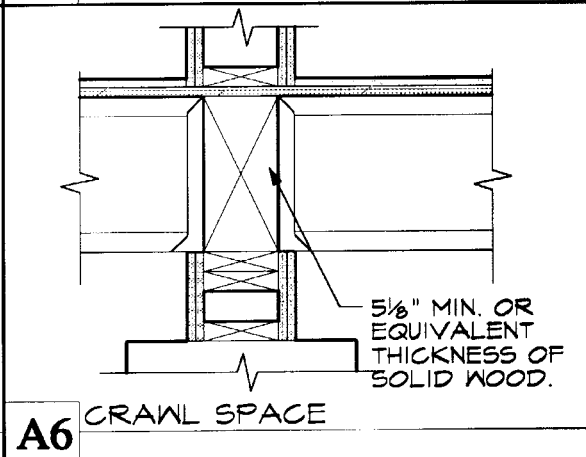
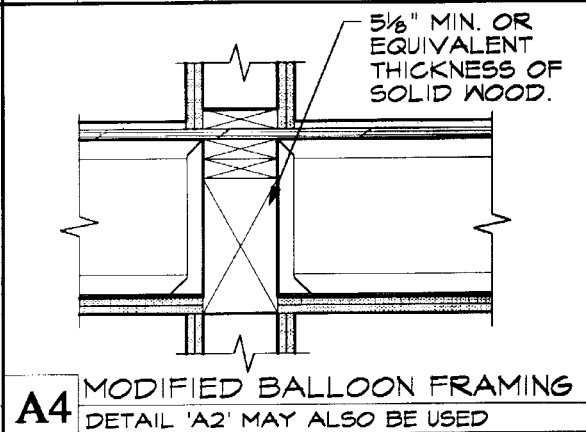
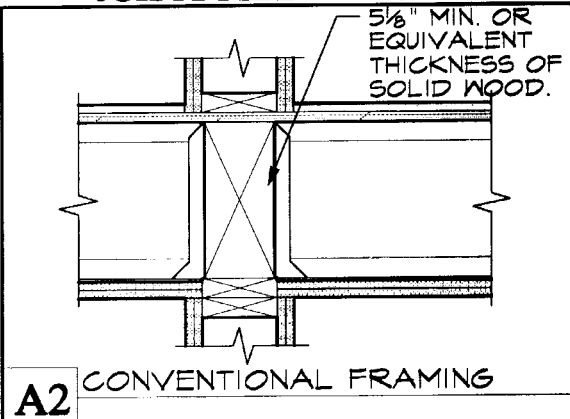
AREA SEPARATION WALL CONDITIONS

PRE-FABRICATED WOOD I - JOISTS

JOISTS PARALLEL

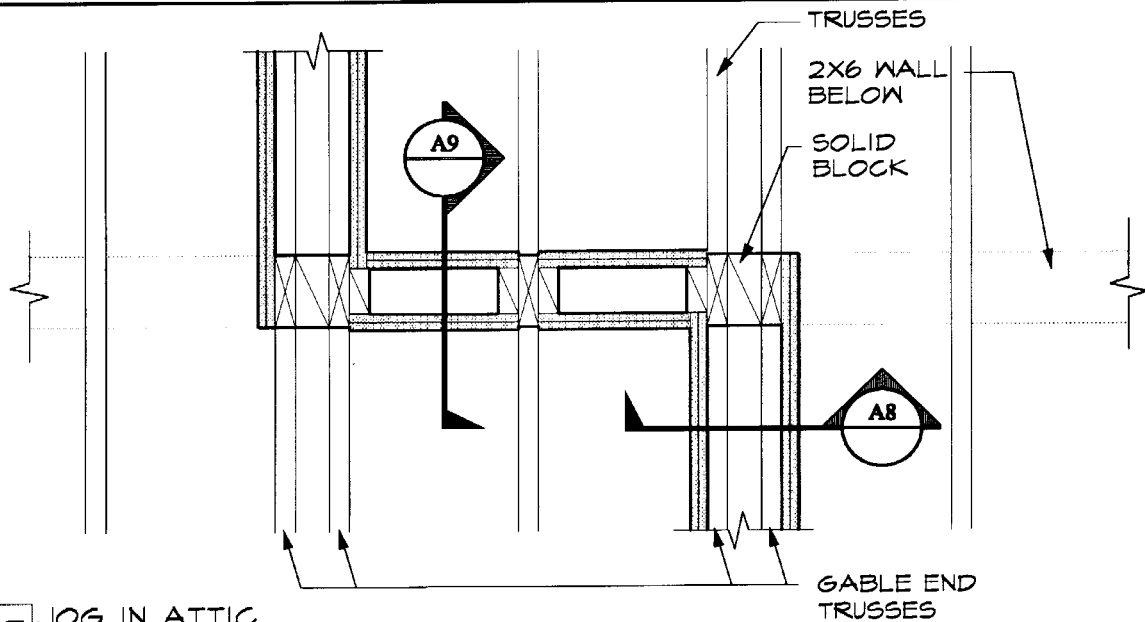


JOISTS PERPENDICULAR

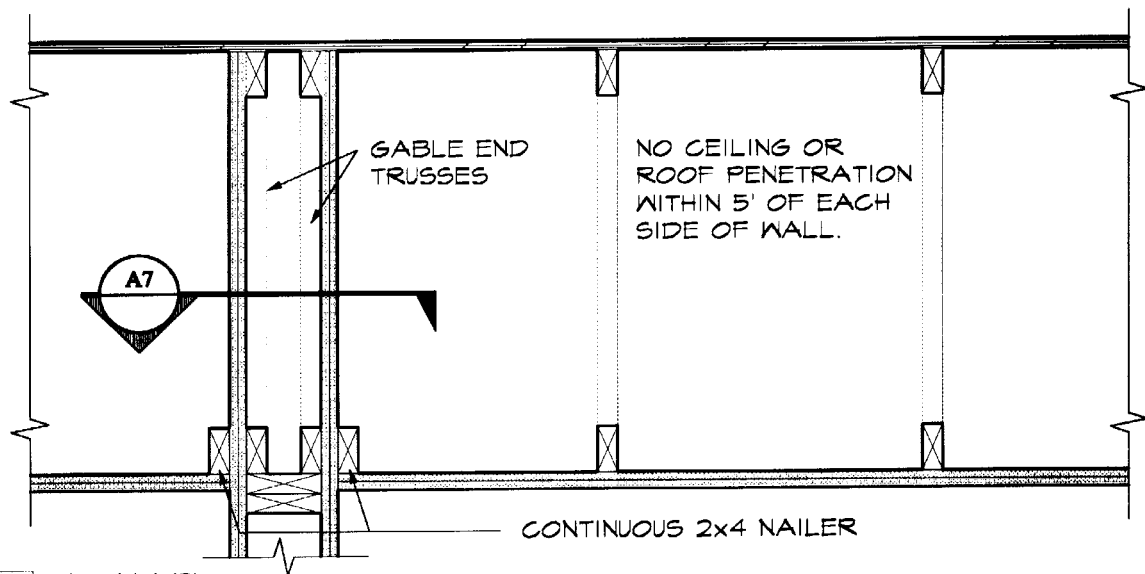


AREA SEPARATION WALL / ROOF CONDITIONS

ROOF / CEILING DETAIL



A7 JOG IN ATTIC
PLAN VIEW



UBC/6/#2

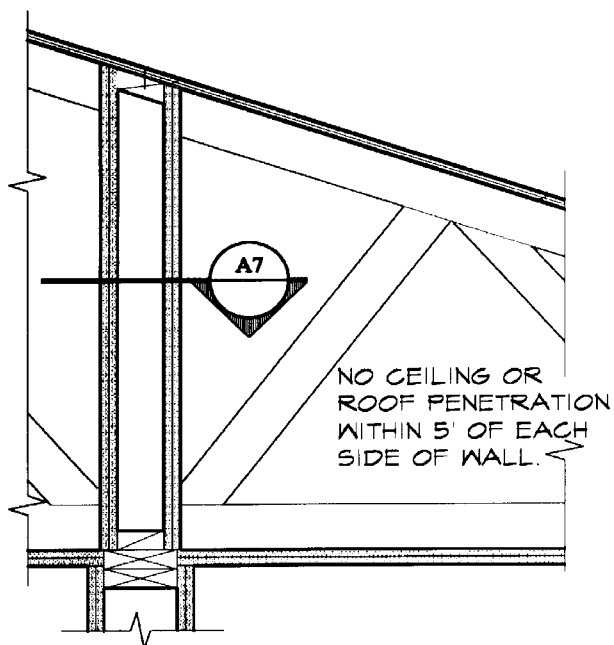
Wood frame, Rated Construction

Page 20 of 29

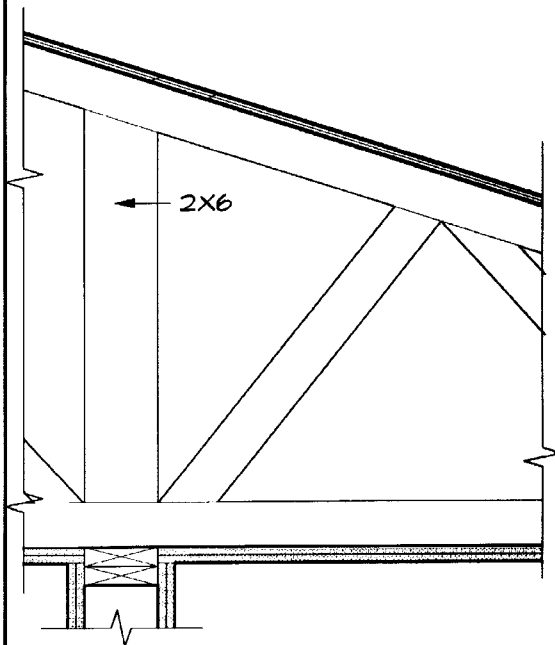
March 1, 1999

AREA SEPARATION WALL / ROOF CONDITIONS

ROOF / CEILING DETAIL



NOTE: TRUSSES PASSING THROUGH 2-HR WALL TO HAVE MFG'S ENGINEER CERTIFY THAT TRUSS WILL CONTINUE TO FUNCTION WITH EITHER SIDE BURNED AWAY. PROVIDE A VERTICAL 2 X 6 MEMBER IN TRUSS TO TRANSFER WALL THROUGH TRUSS.

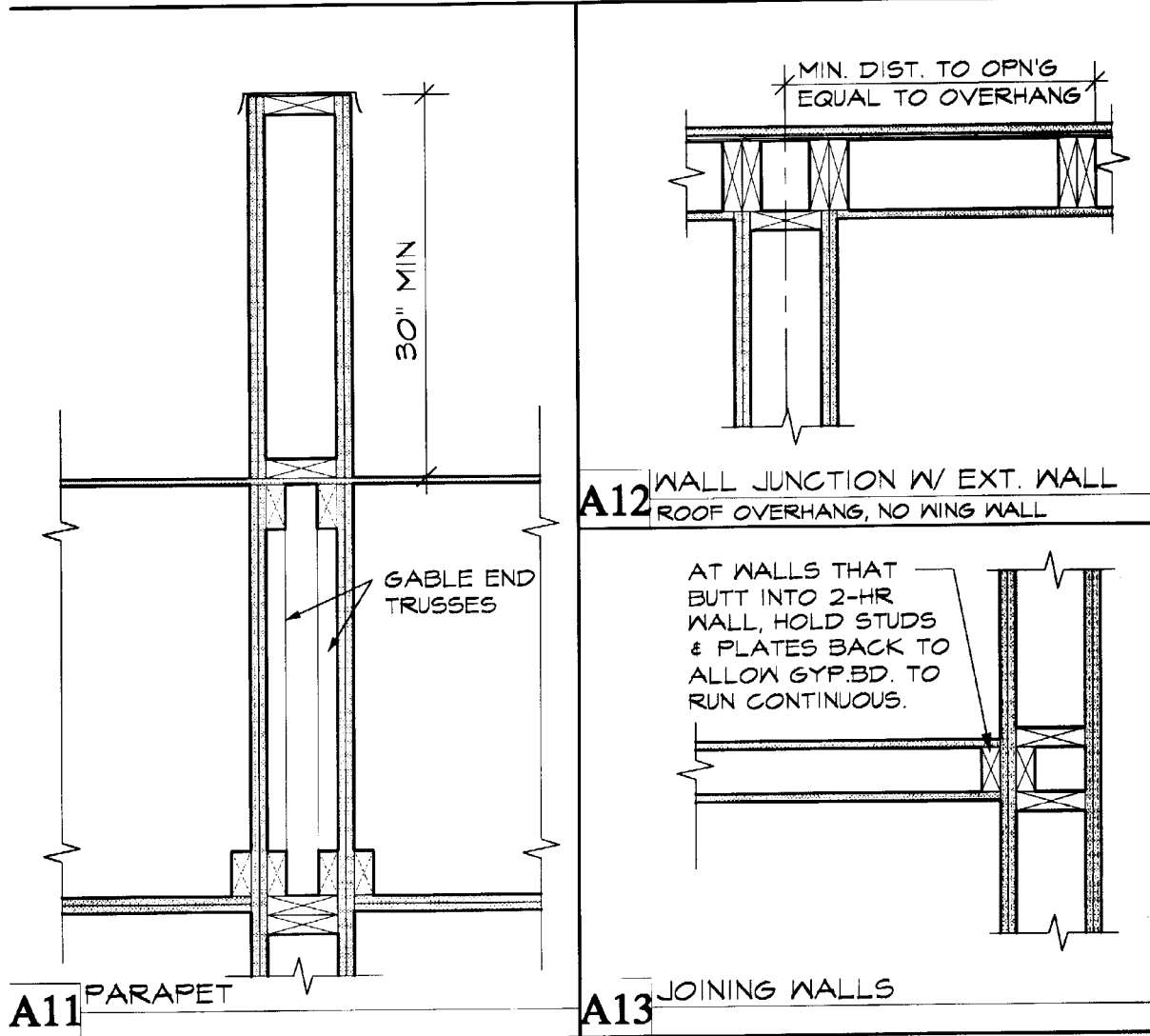


A9 PERPENDICULAR

A10 TRUSS STRIPPED FOR CLARITY

AREA SEPARATION WALL CONDITIONS

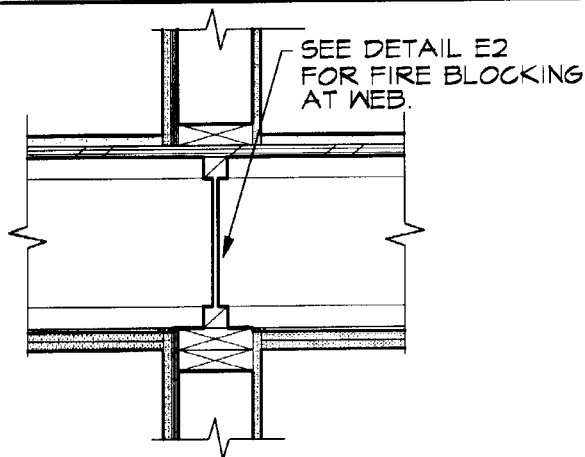
PRE-FABRICATED WOOD I - JOISTS



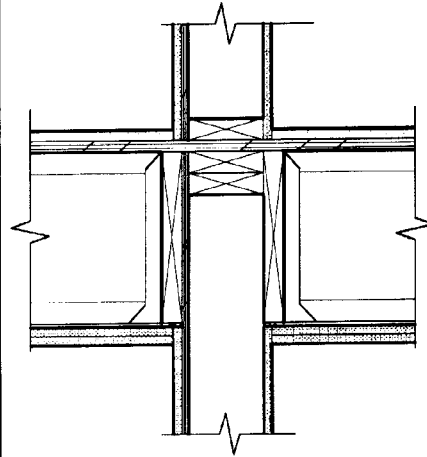
INTERIOR WALL CONDITIONS

PRE-FABRICATED WOOD I - JOISTS

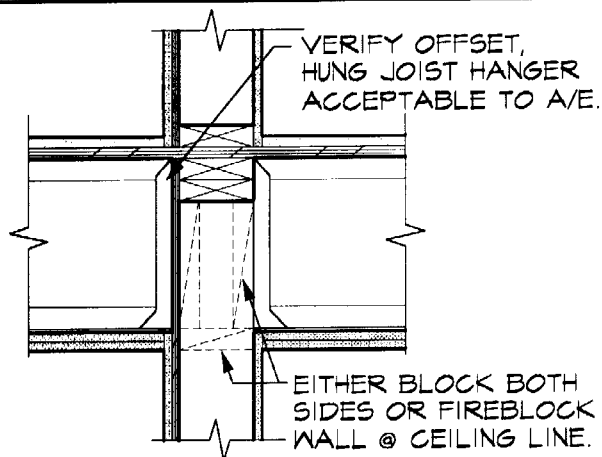
JOISTS PERPENDICULAR



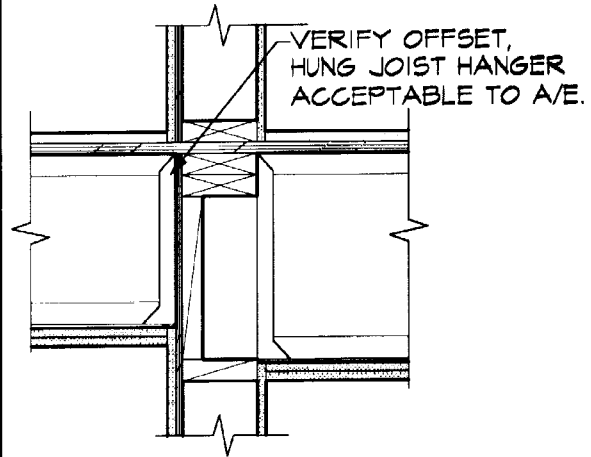
B1 CONVENTIONAL FRAMING



B2 MODIFIED BALLOON FRAMING



B3 MODIFIED BALLOON FRAMING
BLK'G FOR FIRE PROTECT ONLY

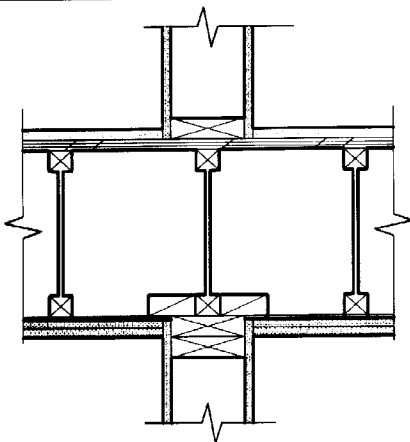


B4 DIFFERING HEIGHT JOIST

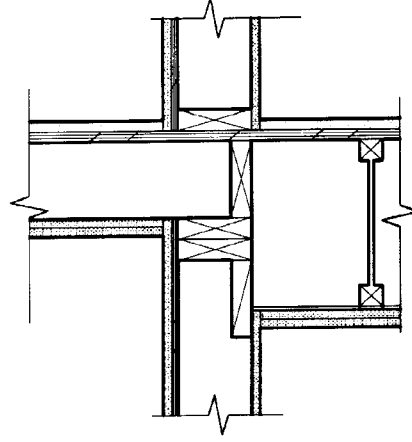
INTERIOR WALL CONDITIONS

PRE-FABRICATED WOOD I - JOISTS

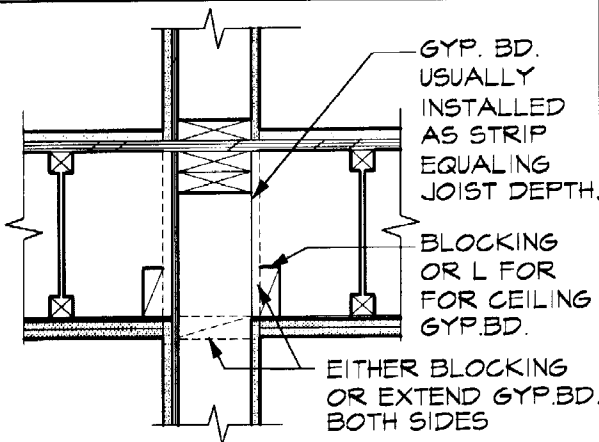
JOISTS PARALLEL



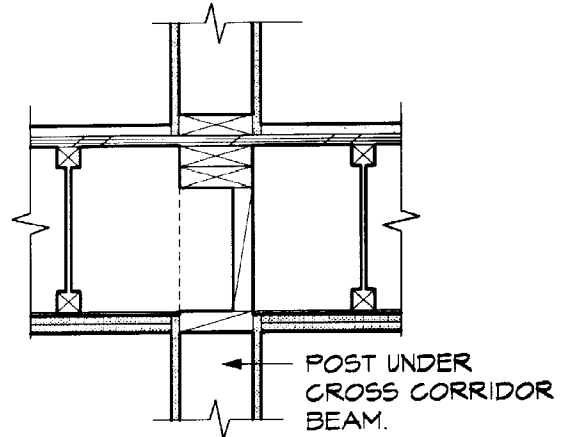
B5 CONVENTIONAL FRAMING



B6 CORRIDOR DETAIL



B7 MODIFIED BALLOON FRAMING
BLK'G FOR FIRE PROTECT ONLY



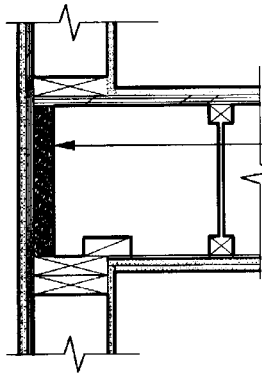
B8 CORRIDOR DETAIL

EXTERIOR WALL CONDITIONS

PRE-FABRICATED WOOD I - JOISTS

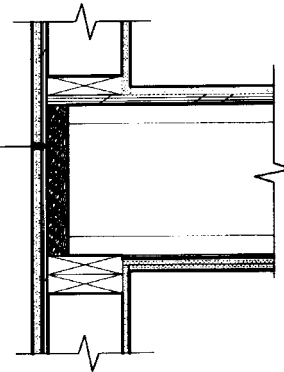
JOISTS PARALLEL

JOISTS PERPENDICULAR

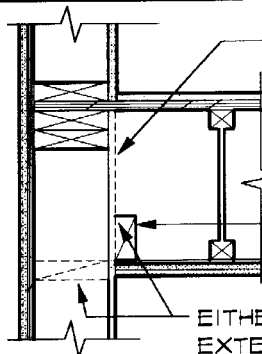


SINGLE RIM JOIST OF SAWN LUMBER OR FIRE RESIST. TESTED RIM JOIST CURRENTLY, ONLY TIMBERSTRAND BY TJI MEETS THIS REQUIREMENT.

C1 CONVENTIONAL FRAMING



C2 CONVENTIONAL FRAMING

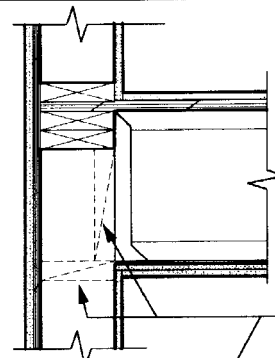


GYP.BD. USUALLY INSTALLED AS STRIP EQUALING JOIST DEPTH.

BLOCKING OR L FOR CEILING GYP.BD.

EITHER BLOCKING OR EXTEND GYP. BD.

C3 MODIFIED BALLOON FRAMING
BLK'G FOR FIRE PROTECT ONLY

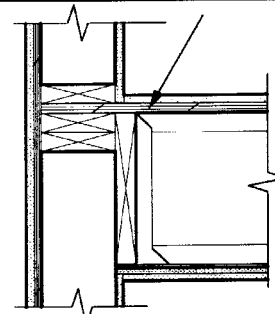


EITHER

C4 MODIFIED BALLOON FRAMING
BLK'G FOR FIRE PROTECT ONLY

NOTE FOR C3, C4, AND C5:

IN NON-RATED BUILDINGS, THE 1-HR. RATED EXTERIOR WALL MUST EXTEND THROUGH THE FLOOR/CEILING SPACE.

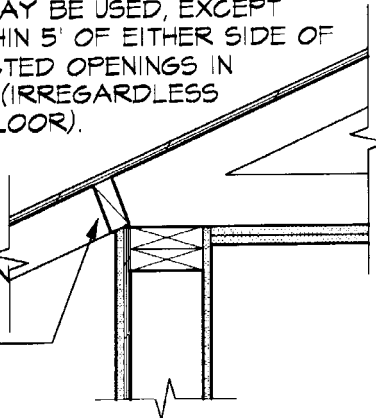


C5 MODIFIED BALLOON FRAMING

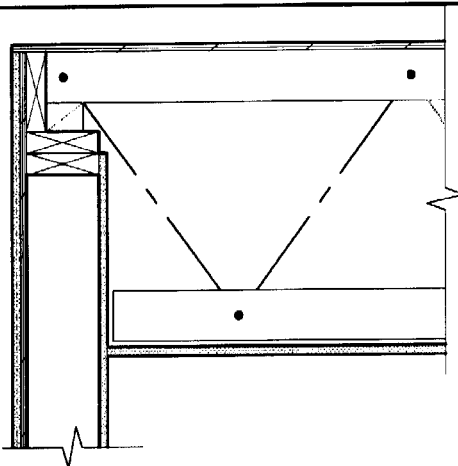
EXTERIOR WALL / ROOF CONDITIONS

PRE-FABRICATED WOOD I - JOISTS

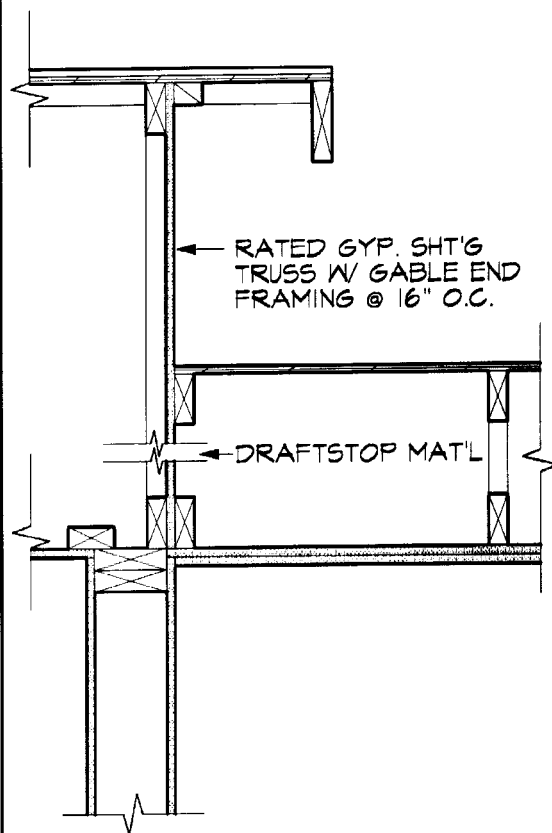
BY INTERPRETATION, VENTED EAVE
BLOCKING MAY BE USED, EXCEPT
OVER & WITHIN 5' OF EITHER SIDE OF
NON-PROTECTED OPENINGS IN
FLR. BELOW (IRREGARDLESS
OF HT. OF FLOOR).
REFERENCE
STRUCTURAL
DWGS. FOR
ADDITIONAL
INFORMATION



D1 EAVE BLOCKING



D2 TOP CHORD BEARING
STANDARD & AT ONE HOUR WALL

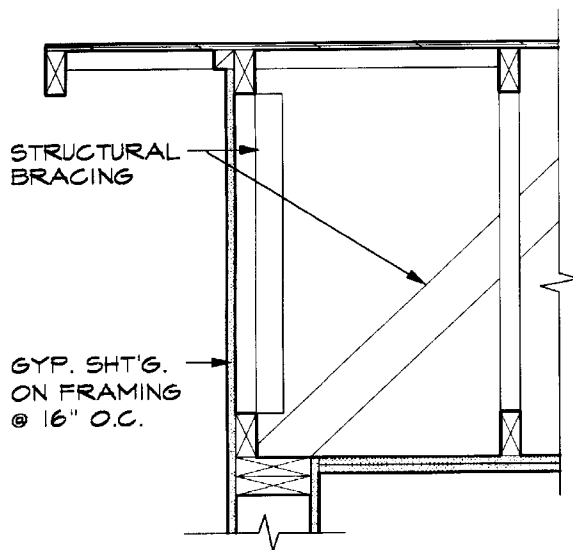


D3 ROOF OFFSET DETAIL

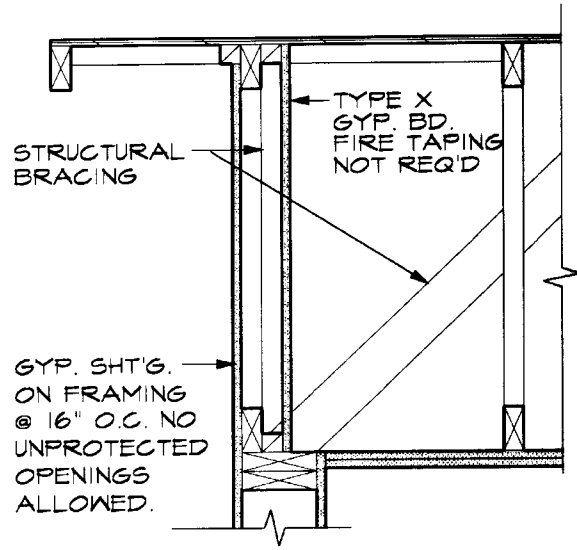
EXTERIOR WALL / ROOF CONDITIONS

STANDARD

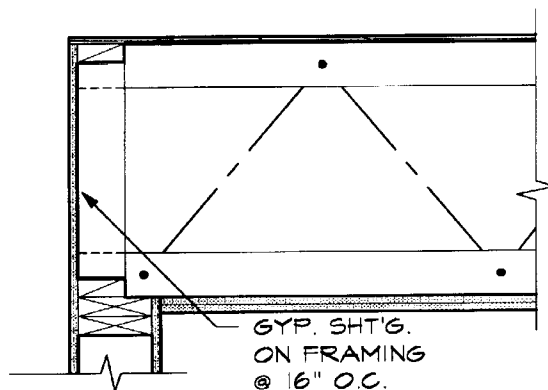
@ REQ'D ONE HOUR EXT. WALL



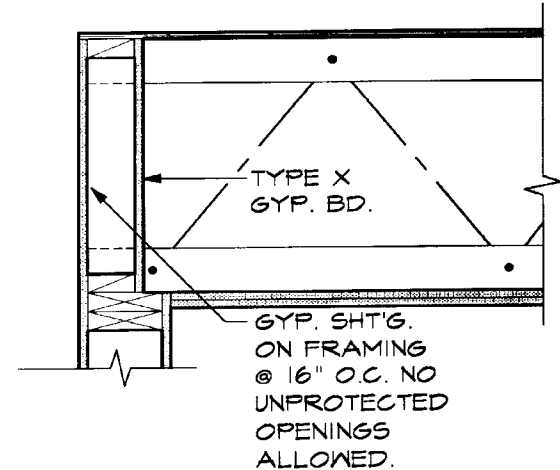
D4 GABLE END



D5 GABLE END



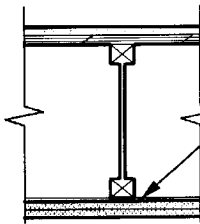
D6 BOTTOM CHORD BEARING



D7 BOTTOM CHORD BEARING

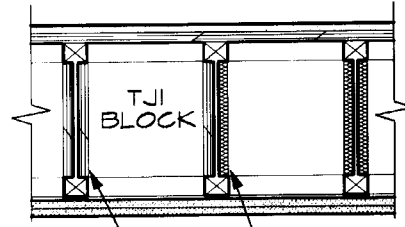
ONE-HOUR WOOD FRAMING DETAILS

PRE-FABRICATED WOOD I - JOISTS



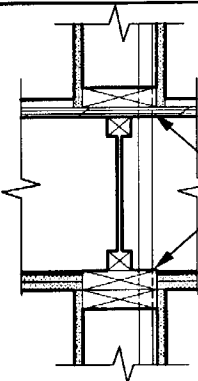
NO FIRE
BLOCKING REQ'D
@ RC-1 CHANNEL

E1 DRAFT STOPPING EXCEPTION



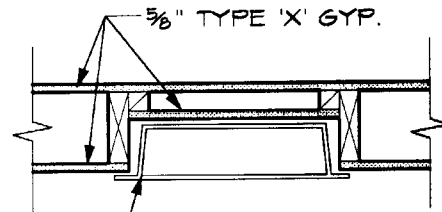
INSULATION OR
WEB STIFFENER
FOR DRAFT STOPPING

E2 DRAFT STOPPING AT
PARTY WALLS



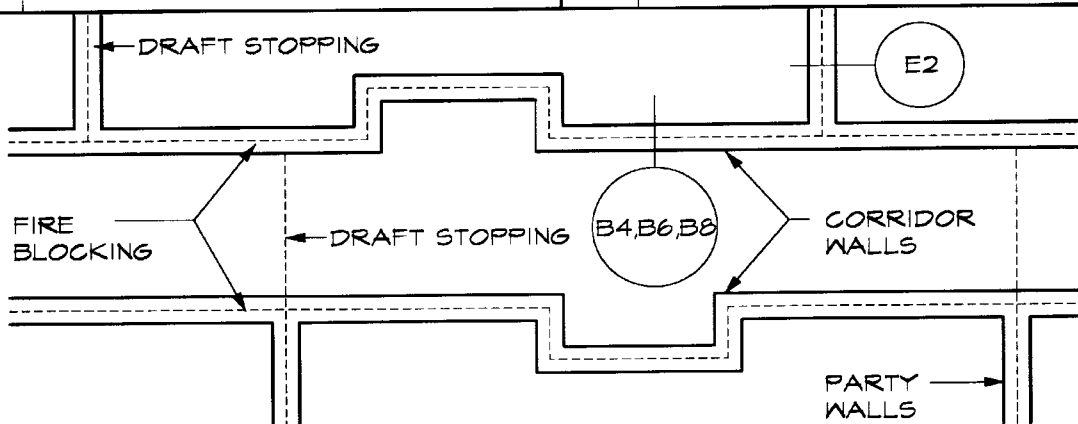
FIREBLOCK
EITHER
LOCATION

E3 SMALL PENETRATION DETAIL



RECESSED ITEM

E5 RECESSED ITEMS

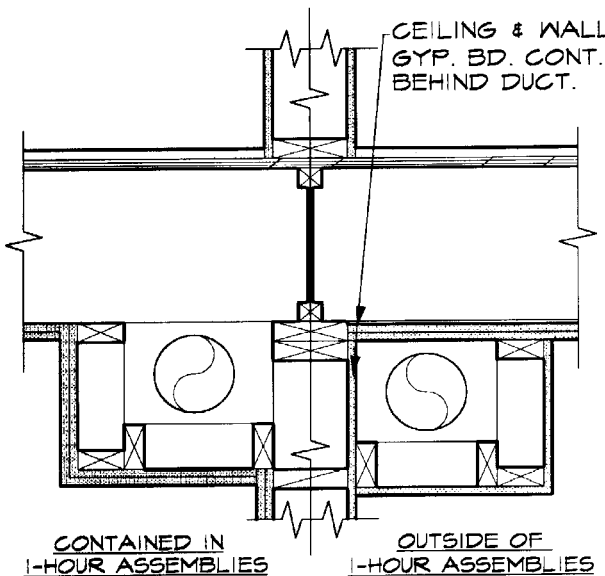


E4 FIRE BLOCKING AT PARTY & CORRIDOR WALLS

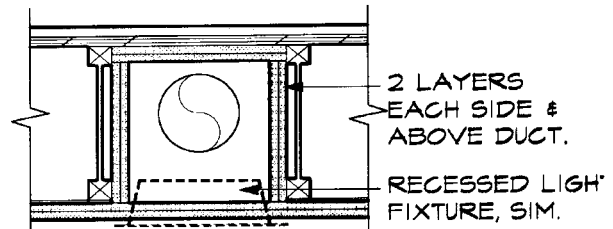
MISCELLANEOUS DETAILS

PRE-FABRICATED WOOD I - JOISTS

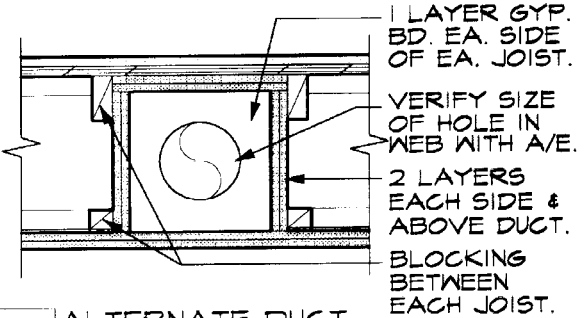
DUCT AND TUB / SHOWER DETAILS



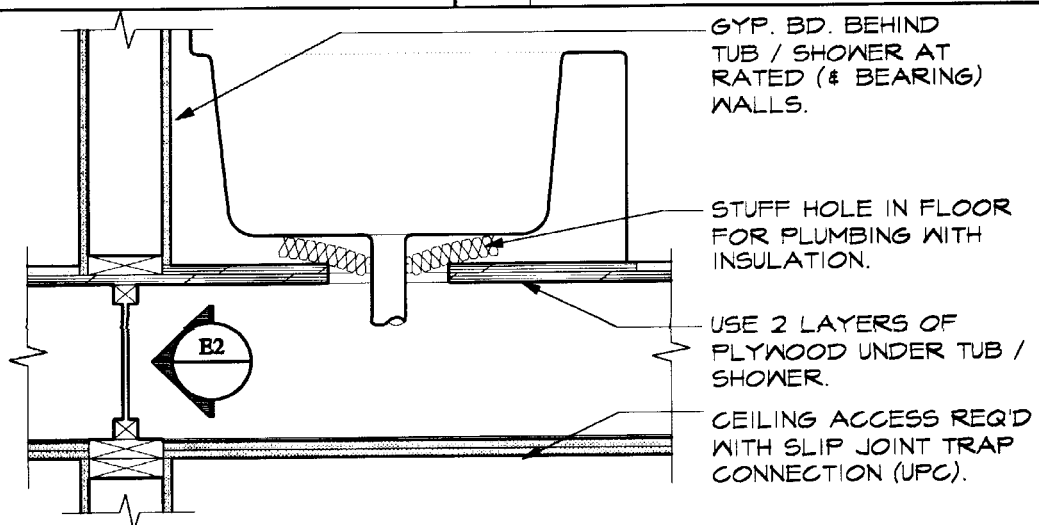
F1 CONVENTIONAL DUCT



F2 ALTERNATE DUCT
PARALLEL



F3 ALTERNATE DUCT
PERPENDICULAR



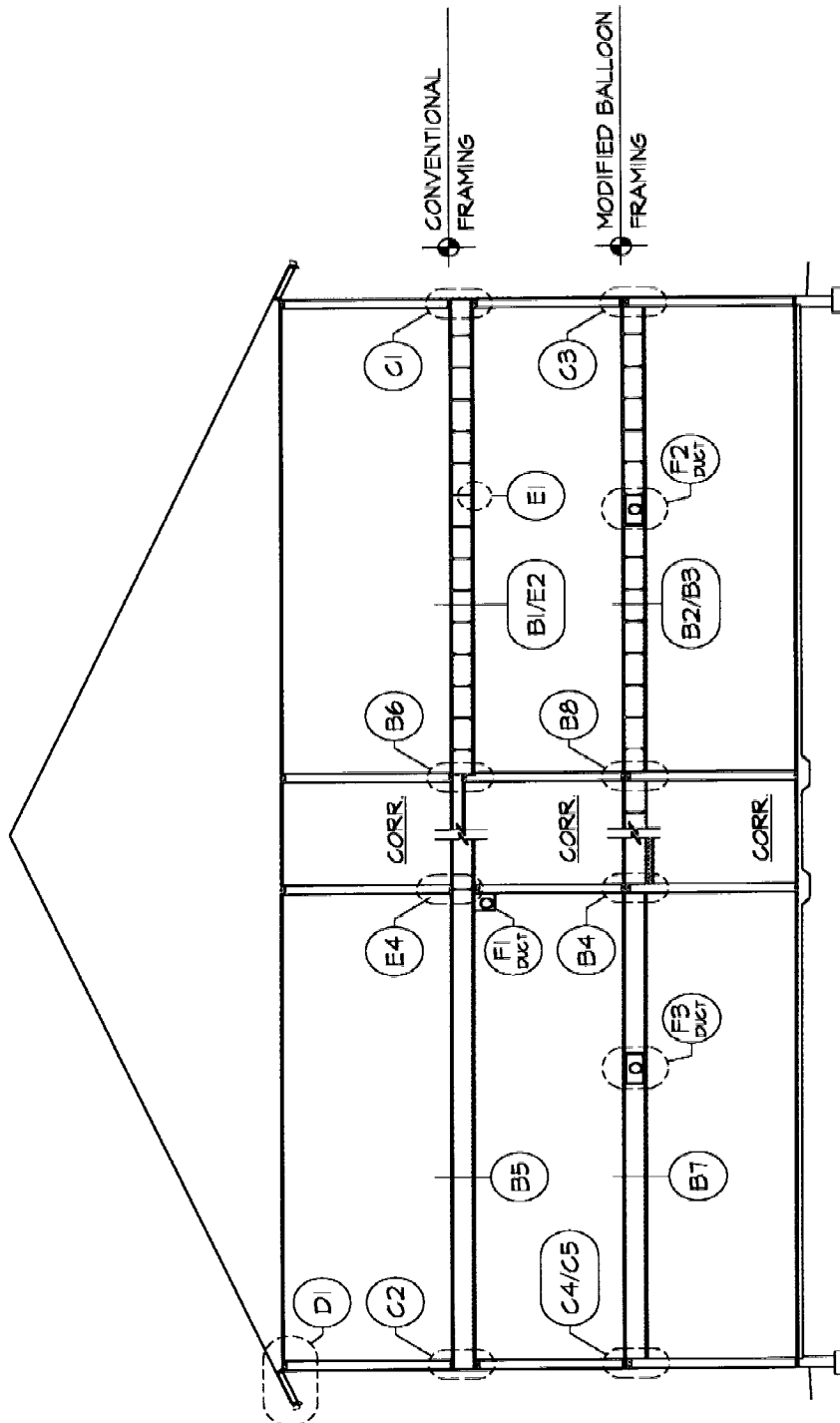
F4 TUB / SHOWER DETAILS

UBC/6/#2

Wood frame, Rated Construction

Page 29 of 29

March 1, 1999



TYPICAL BUILDING SECTION / DETAIL LOCATOR

N.T.S.