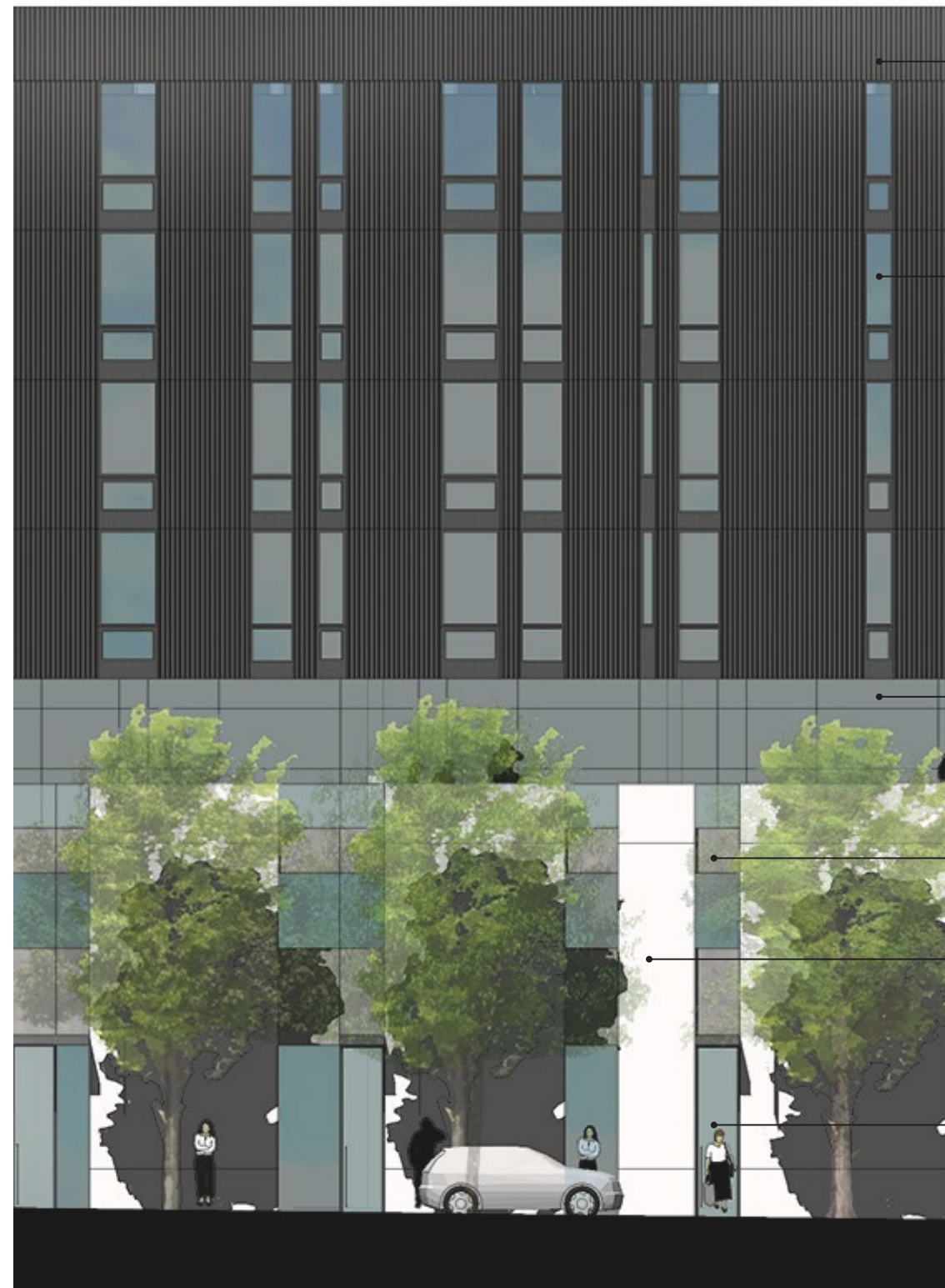


## Proposed Materials East Elevation at NW 21st



Aluminum window wall system parapet:  
+dark gray/bronze powder coated aluminum infill panels

Aluminum window wall system:  
+dark gray/bronze powder coated mullions and window frames with clear double glazing; intermittent operable awning and/or casement windows  
+dark gray/bronze powder coated aluminum infill panels  
+3.5" wide vertical slot vents for unit exhaust and fresh air intake (powder coated aluminum plenum box finished to match mullions and frames)

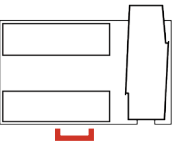
Aluminum storefront (offset glazing to exterior; recessed 4' to 7' from window wall)  
+bright anodized aluminum storefront with portions of clear double glazing and backpainted vertical spandrel glass at demising walls  
+anodized aluminum 2.5" louvered grilles for exhaust and air intake, at high level

Pre-finished painted metal infill panel  
+dark gray color to match aluminum storefront frames  
+recessed from outside face of concrete panels

Existing concrete tilt-up wall panels to be retained  
+white/light gray and dark gray exterior grade paint at exterior face of panels  
+polish and clear seal exposed edges of concrete where cuts are made into existing panels  
+panels and footings to tie into proposed post-tensioned concrete structure

Aluminum storefront (offset glazing to exterior)  
+dark gray/bronze powder coated mullions and frames w/ clear double glazing  
+steel plate reinforcing behind at 3rd floor guard rail  
+recessed from outside face of concrete panels

## Proposed Materials South Elevation at NW Pettygrove



- High performance lime-based plaster finish
  - +expansion joints at window jamb and head lines and aligned with existing columns in tilt-up walls to be retained
  - +warm gray or light gray tone (with portions of darker gray and/or white)
- Vinyl window
  - +dark gray frames and sashes
  - +clear, double glazing
- Vinyl in-swing French style door
  - +dark gray frames and sashes
  - +clear, double glazing
- “Juliette” balcony
  - +powder coated steel bar frame offset 3” from door
  - +powder coated perforated metal panel guarding
  - +dark gray color
- High performance lime-based plaster finish (at projecting and recessed volumes within openings in retained tilt-up concrete)
- Existing concrete tilt-up wall panels to be retained
  - +stripped of existing paint and clear sealed
  - +polish and clear seal exposed edges of concrete where cuts are made into existing panels
  - +panels and footings to tie into proposed post-tensioned concrete structure
- Aluminum clad wood doors and windows (at townhomes)
  - +dark gray/bronze aluminum frames
- Stamped concrete porches/stoops with cast-in-place concrete planter areas; concrete stairs up from street