

Program Accomplishments

CALENDAR YEAR 2013

- **422 new properties joined the program** and received their initial Site Assessment - 45 in Lake Oswego, 377 in Portland
- **49+ ACRES of newly enrolled properties**
10 acres in Lake Oswego and 39 acres in Portland.
- **287 properties became certified** (including upgrades and renewals) - 23 in Lake Oswego, 264 in Portland
- **34+ ACRES of newly certified properties** – 3 acres in Lake Oswego, 31 acres in Portland
- **8155+ Native trees and shrubs installed** on certified properties - 290 in Lake Oswego, 7865 in Portland
- **1040+ volunteer hours** dedicated to the BHCP by amazing volunteers (44% increase from last year!)
- **12,000+ native plants sold** to participants through BHCP discounted native plant sales



GRAND TOTALS (thru Dec 31, 2013)

- **1924 total properties enrolled** - 152 in Lake Oswego and 1772 in Portland
- **352 total ACRES of enrolled properties** in the program - 42 in Lake Oswego, 310 in Portland
- **803 total properties have been certified** (including upgrades and renewals)
- 62 in Lake Oswego, 741 in Portland
- **123 total ACRES of certified properties** - 14 in Lake Oswego, 109 in Portland
- **3200+ volunteer hours** dedicated to the BHCP by amazing volunteers
- **12,750 total native trees and shrubs planted** on certified properties - 465 in Lake Oswego, 12,285 in Portland



CERTIFICATION CRITERIA

Silver

- Remove all “silver” aggressive weeds* from property
- Naturescape at least **5%** of property with native plants
 - Include at least **3 out of 5** vegetation layers
- Pick at least **one** item from each of the **Wildlife Stewardship & Stormwater** lists
- Develop plan to reach Gold Certification (recommended)

*see back for aggressive weed list

Gold

- Remove all “silver & gold” aggressive weeds* from property
- Naturescape at least **15%** of property with native plants
 - Include at least **4 out of 5** vegetation layers
- Pick at least **two** items from each of the **Wildlife Stewardship & Stormwater** lists
- Develop plan to reach Platinum Certification (recommended)

Platinum

- Remove 100% of all three levels of aggressive weeds* from property
- Naturescape at least **50%** of property with native plants
 - Include **all 5** vegetation layers
- Pick at least **three** items from each of the **Wildlife Stewardship & Stormwater** lists
- Pick one item from **Education and Volunteerism** list

Wildlife Stewardship

- Have a wildlife water feature (birdbath, natural pond or creek)
If a birdbath, clean weekly
- Have avian nest boxes for native species (clean annually)
- Have native bee houses (clean bi-annually)
- Keep cats indoors or in an outdoor enclosure (*required for platinum*)
- Have a dead snag (at least 5 ft tall) or a decomposing nurse log
- Reduce outdoor lighting (turn off outdoor lights during migration, March-May & Sept-Nov)
- Reduce bird window collisions; assess problem windows and treat to reduce strikes
- Have a native plant meadow with a mix of forbs and grasses for three season bloom times

Stormwater Management**

- Have large tree (can be non-native) for stormwater absorption
- Disconnect downspouts (where appropriate)
- Have a rain garden
- Grass or impervious pavement is less than 5% of property (minus house)
- Have an ecoroof
- Take the Metro No Pesticide Pledge (*required for gold*)
- No use of moderate/high-hazard yard or garden products for one year (see Metro’s Grow Smart Grow Safe Guide) (*required for platinum*)
- Decommission all/part of an existing landscape irrigation system
- Use a rain sensor on an existing irrigation system

**Stormwater options are different for each property. Research the most appropriate items for your site before implementation.

Education & Volunteerism

- Recruit 2 neighbors to sign up!
- Allow site/yard to be showcased in Habitat garden tours or Metro tour
- Volunteer for Certification Program and/or mentor other Backyard Habitat homeowners
- Attend continuing education classes, i.e. Raingardens
- Participate in OSU Extension Master Gardener Programs
- Become a “weed watcher” (Early Detection, Rapid Response)

Turn page over for Weeds & Vegetation layers

Aggressive Weeds

Silver weeds

Ivy (all cultivars), Himalayan blackberry, Traveler's joy (*Clematis vitalba*), Pokeweed, Butterfly bush (*Buddleia davidii*), False brome, Garlic mustard, Yellow flag iris, Purple loosestrife, Knotweed, Giant hogweed, Gorse (*Ulex europaeus*), Meadow hawkweed (*Hieracium caespitosum*), Pampas/jubata grass (*Cortaderia jubata* and *C. selloana*), Spotted/Meadow & Diffuse knapweeds, Policeman's helmet

Gold weeds

Hedge bindweed (*Calystegia sepium*), Lesser celandine, Robert geranium, Shining geranium, Spurge laurel, Scot's broom, Yellow archangel (*Lamium galeobdolon*), Purple star thistle (*C. solstitialis* & *C. calcitrapa*), Evergreen blackberry, Norway maple*, Tree-of-heaven*, English holly*

*Large trees over 20 ft tall are exempt for gold, but not for Platinum level.

Platinum weeds

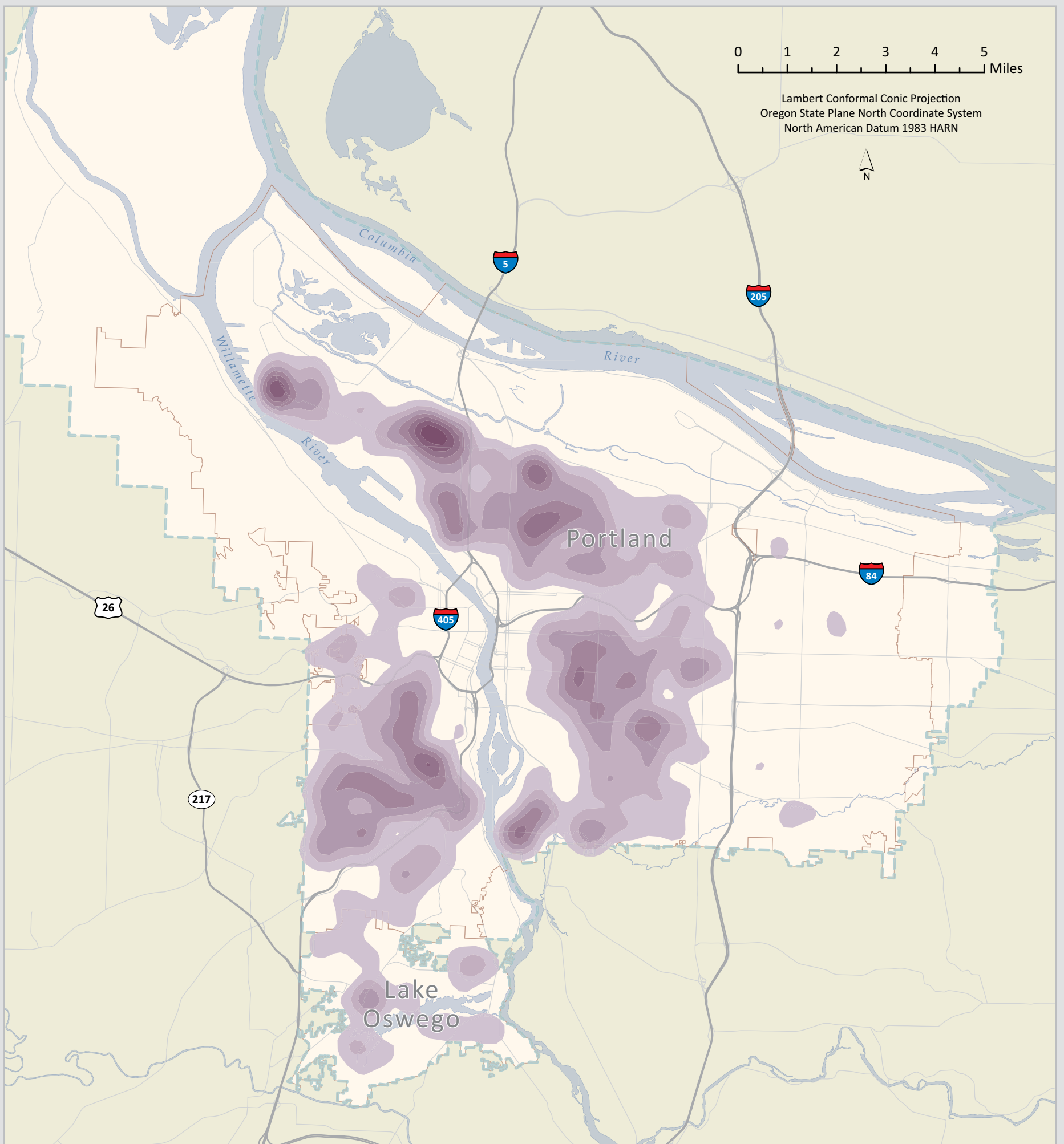
Spatulaleaf loosestrife, Large and Small-leaf periwinkle, "Weedy" fennel, Reed canarygrass, Creeping buttercup (*Ranunculus repens*)

Vegetation Layers

1. **Ground layer:** i.e. Inside-out flower (*Vancouveria hexandra*), Western Red Columbine (*Aquilegia Formosa*)
2. **Small/Medium Shrub layer (<5ft):** i.e. Salal (*Gaultheria shallon*), native ferns
3. **Large Shrub layer (5-20ft):** i.e. Indian Plum (*Oemleria cerasiformis*), Serviceberry (*Amelachier alnifolia*)
4. **Understory tree canopy (<30ft):** i.e. Vine maple (*Acer circinatum*), Cascara (*Rhamnus purshiana*)
5. **Overstory tree canopy (>30ft):** i.e. Oregon White Oak (*Quercus garryana*), Western Redcedar (*Thuja plicata*)



Site Density



Backyard Habitat Certification Program



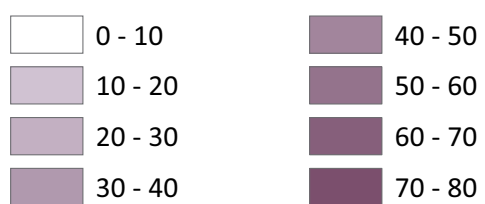
Data Sources:

Audubon Society of Portland
Columbia Land Trust
Friends of Tryon Creek
Johnson Creek Watershed Council
Metro RLIS (Aug 2013 distribution)

This map is intended for informational purposes. It is not intended for, and may not be suitable for legal, engineering, or surveying purposes. The Backyard Habitat Certification Program is a collaborative effort of the Audubon Society of Portland and Columbia Land Trust.

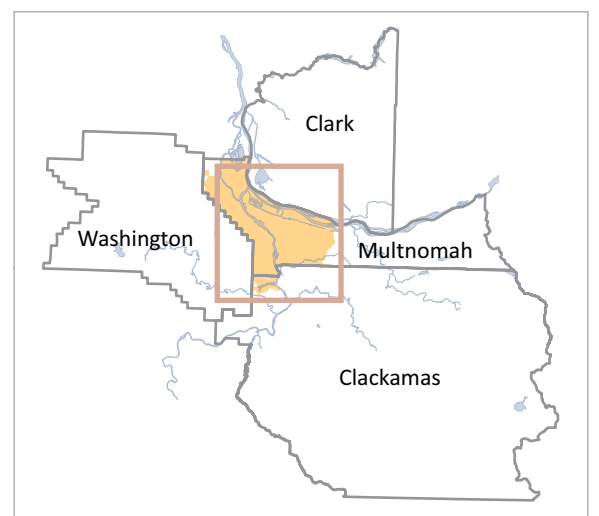


Participating Sites per Square Mile



City Administrative Boundary

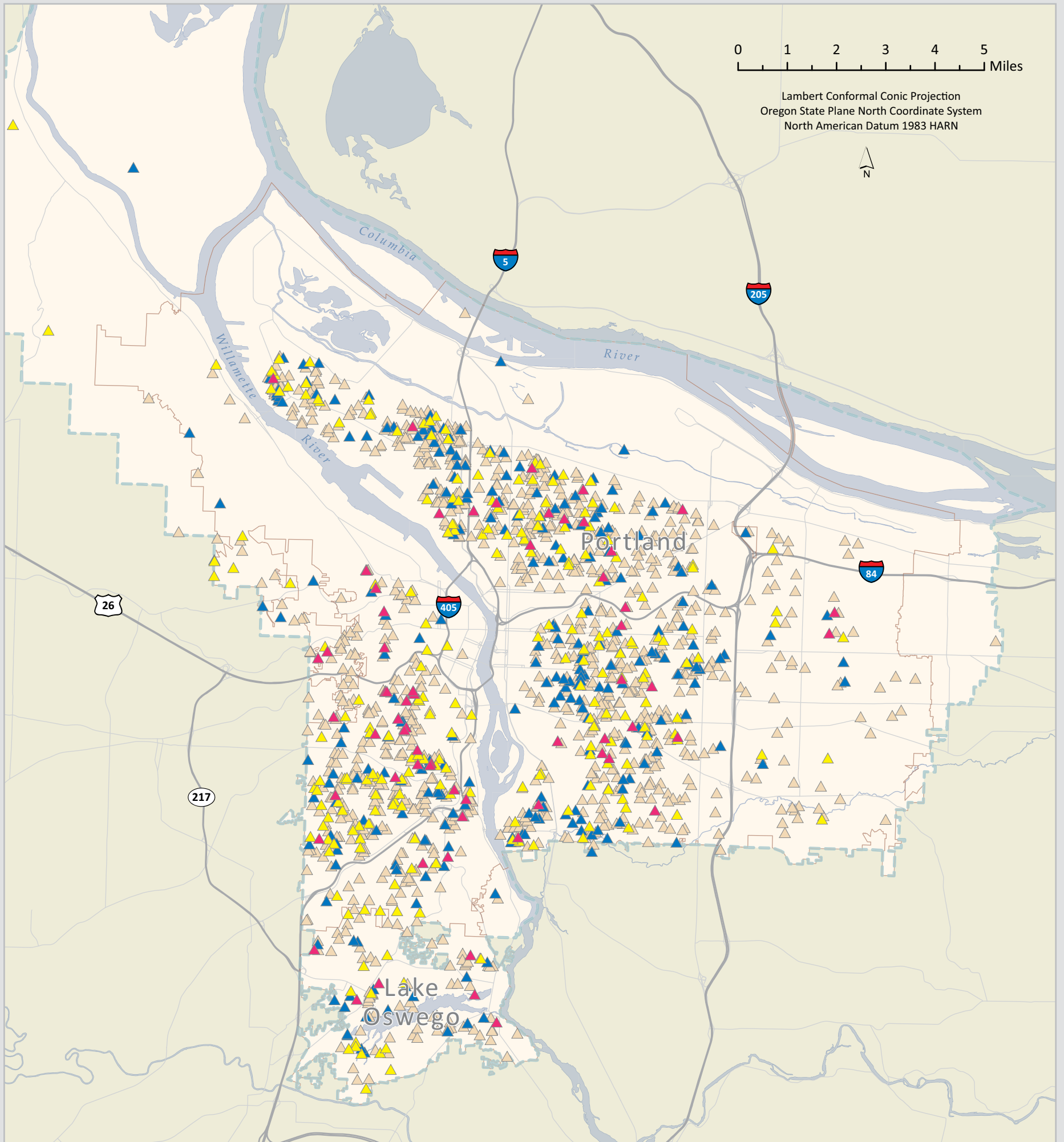
BHC Program Boundary



Location Map

Site Inventory

Site Location and Certification Level



Backyard Habitat Certification Program

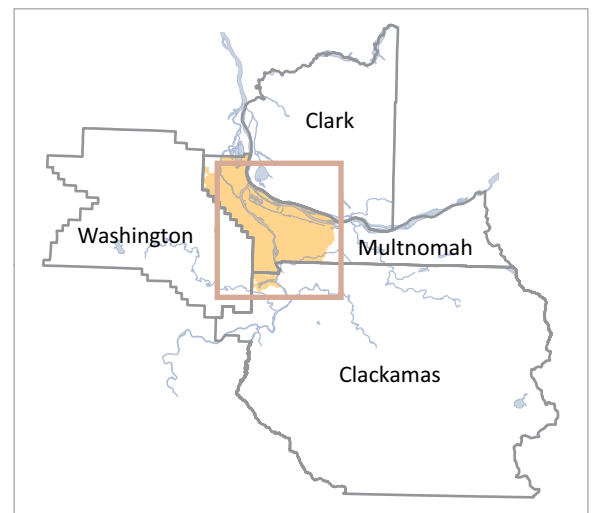


Certification Level

- ▲ Platinum
- ▲ Gold
- ▲ Silver
- ▲ In Progress

BHCP Program Boundary

City Administrative Boundary



Location Map

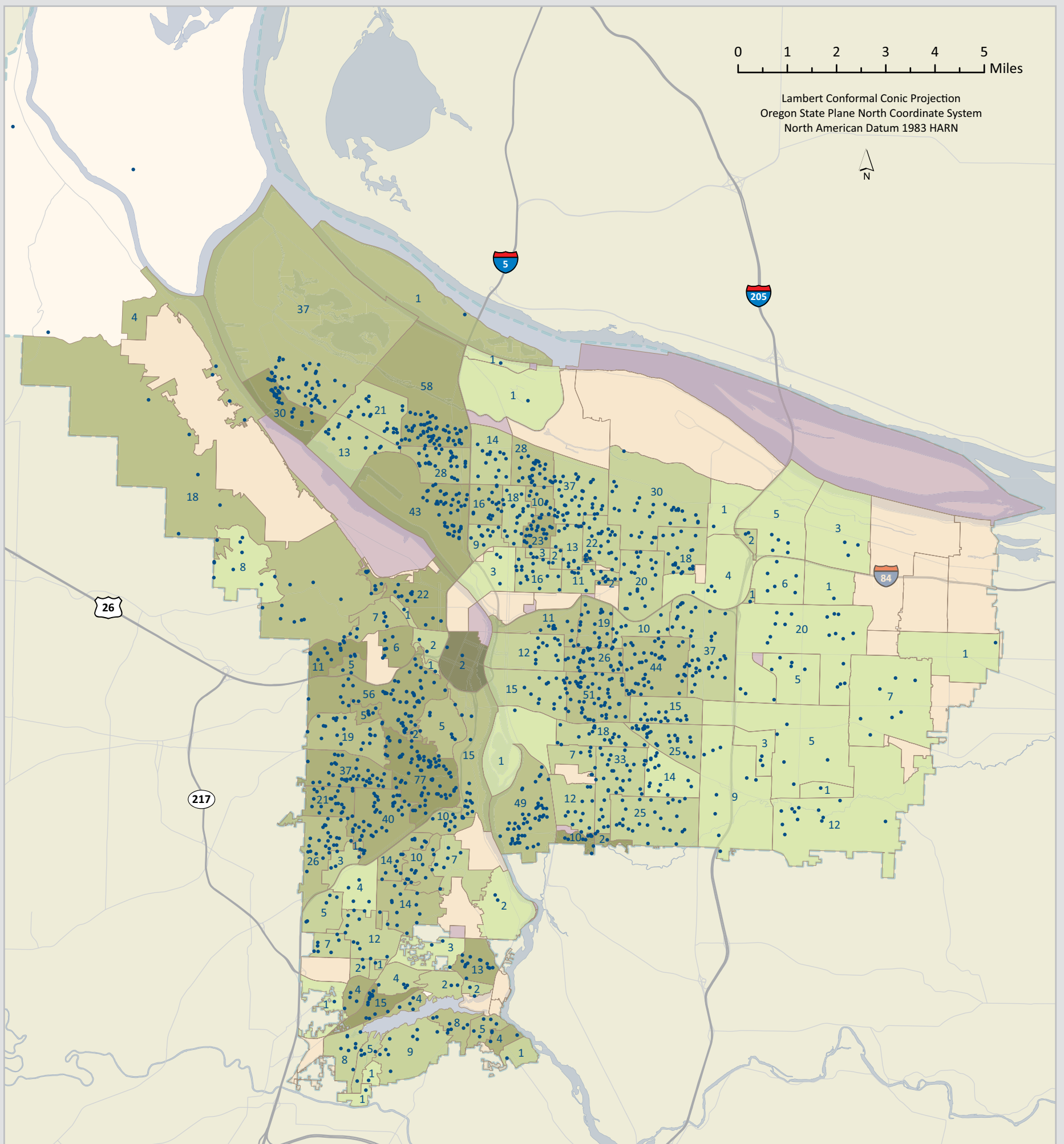
Data Sources:

- Audubon Society of Portland
- Columbia Land Trust
- Friends of Tryon Creek
- Johnson Creek Watershed Council
- Metro RLIS (Aug 2013 distribution)

This map is intended for informational purposes. It is not intended for, and may not be suitable for legal, engineering, or surveying purposes. The Backyard Habitat Certification Program is a collaborative effort of the Audubon Society of Portland and Columbia Land Trust.



Participation Rate by Neighborhood



Backyard Habitat Certification Program



Data Sources:

Audubon Society of Portland
Columbia Land Trust
Friends of Tryon Creek
Johnson Creek Watershed Council
Metro RLIS (Aug 2013 distribution)

This map is intended for informational purposes. It is not intended for, and may not be suitable for legal, engineering, or surveying purposes. The Backyard Habitat Certification Program is a collaborative effort of the Audubon Society of Portland and Columbia Land Trust.



Participation Rate *

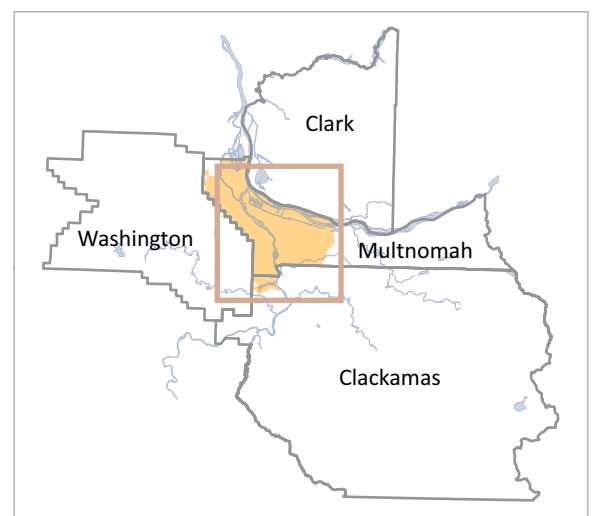
	0.05% - 0.53%		1.66% - 2.56%
	0.54% - 1.03%		2.57% - 5.56%
	1.04% - 1.65%		5.57% - 18.2%

No Properties Participating in Program
 No Properties Eligible for Program

Participating Property
 # of Participating Properties in Neighborhood

BHCP Program Boundary

* Participation Rate = (# of properties in program) / (# of residential taxlots)



Location Map