



Office of Mayor Charlie Hales
City of Portland

REPORT TO COUNCIL

DATE: January 29, 2014

TO: City Council

FROM: Mayor Charlie Hales

SUBJECT: Accept report from Portland Community College on the current work of Future Connect

I am pleased to submit for your consideration a report from Portland Community College on the current work of Future Connect.

PCC's President, Dr. Jeremy Brown will bring a program update, along with a Future Connect philanthropic supporter from US Bank, a K-12 Partner from Roosevelt High School, and students who are moving successfully through the program.

Future Connect is in its third year of partnership with the City of Portland in concert with the PCC Foundation. Future Connect is an innovative college scholarship and success program targeted at lower-income Portlanders from families with little or no experience having attended college. City of Portland resources are matched with support from donors from the PCC Foundation to provide students access to college and the supports they need to thrive. Given Portland's pioneering leadership, Future Connect has been brought to the cities of Hillsboro and Beaverton last year, and the State Legislature is looking at the program as an example of "Aspirations to College Program" for funding in the 2014 Legislative Session.

I hope that through this presentation, the council can further educate our community about the work of Portland Community College in providing pathways for high schools students to attend college and on-going support to students once enrolled.

Sincerely,

Charlie Hales
Mayor of Portland

Portland Community College Future Connect Scholarship Program Update City of Portland

Cohort One (Entering Fall Term 2011)

144 Students enrolled in Multnomah County from 28 schools

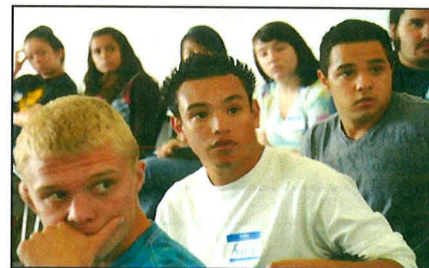
- 89% low-income
- 65% students of color
- 83% first-generation (*neither parent completed college*)
- 63% tested into two or more ESOL or Developmental Education courses (*classes below college level*)
- 70% Fall Term to Fall Term retention rate; students who completed the first year averaged a 2.82 GPA (*about 20% of students from similar backgrounds who do not receive these types of intensive services are retained with good academic standing from fall to fall*)
- Primary reasons students left the program – lost or unstable housing, chose to work, academic performance



Cohort Two (Entering Fall Term 2012)

200 students enrolled in Multnomah County from 28 schools

- 86% low-income
- 72% students of color
- 83% first-generation (*neither parent completed college*)
- 52% tested into two or more ESOL or DE courses
- 70% retention from Fall Term 2012 to Fall Term 2013



Cohort Three (Entering Fall Term 2013)

200 students enrolled in Multnomah County from 28 schools

- 86% low-income
- 73% students of color
- 80% first-generation (*neither parent completed college*)
- 47% tested into two or more ESOL and DE courses
- 93% Fall Term 2013 to Winter Term 2014 retention



Portland Cohort 1		
Reported Income Levels	#	%
less than \$20,000	101	70.14%
\$20,000 to \$30,000	18	12.50%
\$30,000 to \$40,000	7	4.86%
\$40,000 to \$50,000	4	2.78%
\$50,000 to \$60,000	2	1.39%
\$60,000 to \$70,000	1	0.69%
Do not know	10	6.94%
more than \$70,000	1	0.69%
totals	144	100.00%
Parents' College History	#	%
No parents attended Coll.	119	82.64%
1 parent attended Coll.	22	15.28%
Both parents att. Coll.	4	2.78%
Gender	#	%
Male	64	44.44%
Female	80	55.56%
RACE	#	%
Hispanic or Latino	30	20.83%
White	48	33.33%
Black or African American	31	21.53%
Am. Indian or Alaskan Native	6	4.17%
Asian or Pacific Islander	20	13.89%
Multi-Racial/Ethnicity	9	6.25%
Choose not to say	0	0.00%

Portland Cohort 2		
Reported Income Levels	#	%
less than \$20,000	96	48.00%
\$20,000 to \$30,000	36	18.00%
\$30,000 to \$40,000	14	7.00%
\$40,000 to \$50,000	11	5.50%
\$50,000 to \$60,000	4	2.00%
\$60,000 to \$70,000	3	1.50%
Do not know	31	15.50%
more than \$70,000	5	2.50%
totals	200	100.00%
Parents' College History	#	%
No parents attended Coll.	167	83.50%
1 parent attended Coll.	27	13.50%
Both parents att. Coll.	7	3.50%
Gender	#	%
Male	79	40.00%
Female	121	60.00%
RACE	#	%
Hispanic or Latino	43	21.50%
White	56	28.00%
Black or African American	52	26.00%
Am. Indian or Alaskan Native	7	3.50%
Asian or Pacific Islander	27	13.50%
Multi-Racial/Ethnicity	11	5.50%
Choose not to say	4	2.00%

Portland Cohort 3		
Reported Income Levels	#	%
less than \$20,000	102	51.0%
\$20,000 to \$30,000	33	16.50%
\$30,000 to \$40,000	24	12.00%
\$40,000 to \$50,000	15	7.00%
\$50,000 to \$60,000	9	4.00%
\$60,000 to \$70,000	3	1.50%
Do not know	9	3.00%
more than \$70,000	6	3.00%
totals	200	100.00%
Parents' College History	#	%
No parents attended Coll.	161	80.00%
1 parent attended Coll.	31	15.00%
Both parents att. Coll.	8	5.0%
Gender	#	%
Male	80	40.00%
Female	120	60.00%
RACE	#	%
Hispanic or Latino	54	27.00%
White	50	25.50%
Black or African American	46	22.00%
Am. Indian or Alaskan Native	7	3.50%
Asian or Pacific Islander	23	11.00%
Multi-Racial/Ethnicity	18	9.00%
Choose not to say	2	1.0%



Program Innovations, Partnerships and Improvements

Building College Awareness in High Schools

Future Connect staff performs outreach to 28 specific high schools and alternative schools in Multnomah County, reaching over 600 high students per year. Current Future Connect students are also visiting their former high schools and providing mentoring and outreach to high school students. Some students are earning work study pay for these positions.

Housing Supports

Through a partnership with Commissioner Saltzman's office, New Avenues for Youth, Home Forward, Recovery Association Program (RAP), and Future Connect we have been able to play a role in bringing stable housing and support to students who formerly were connected to the foster care system. This spring, a house for five former foster care students will open and Future Connect will provide college support to all students living within that setting.

Internship and Work Experiences

Future Connect students have access to a broad range of internships through partnerships with the City of Portland, the Bureau of Environmental Services, and the Water Bureau. Future Connect also partnered with The Gap to offer job shadowing opportunities and with the PSU School of Social Work to develop a mentoring program for current students. Twenty students are now second year mentors to new, incoming Future Connect students.

University Transfer Opportunities

Forty scholarships at universities are now accessible to current Future Connect students who wish to transfer. Partners in these collaborations include PSU, Lewis and Clark, Pacific University and The Renaissance Foundation.

Private Funding

The PCC Foundation has raised a total of \$1.1 million in private funds for the Future Connect Program in Multnomah County. Private donors include Meyer Memorial Trust, The Renaissance Foundation, The Edwards Lienhart Family Foundation, PGE, U.S. Bank, and NW Natural, among others.

Expansion to Washington County

This fall, Future Connect expanded to serve students from the Cities of Beaverton and Hillsboro. In only two years, Future Connect has created a pathway to college and success for over 600 low-income, first-generation students. Future Connect now has a presence on all PCC campuses and the PCC Southeast Center.



Future Connect Students are Achieving Their Goals

Rachel is a 19-year-old student from Reynolds High school who transferred Pacific University with a \$10,000 scholarship based on her 3.0+ GPA. Rachel is interested in studying Psychology and she has been a leader in the Future Connect Program since day one.

Tony is a 20-year-old third year student who graduated from Parkrose High School and is currently studying molecular biology. Tony is co-admitted to PSU and is receiving both the Renaissance Scholarship, worth \$1,000 per term, and the additional PSU-Future Connect Scholarship, worth \$1,200 per term. Tony has completed several 300-level courses already at PSU and he also completed a 400-hour internship with the City of Portland Water Bureau as part of his Future Connect Internship.

Chris is a 20-year-old, third year Future Connect student who will complete his transfer degree this spring. Chris has helped raise his family alongside his sister after the loss of his mother in high school. Upon entering PCC, Chris held a job at Carl's Junior where he thrived as a hard worker and longtime employee. Once Chris had the chance to work within the Bureau of Environmental Services as part of the Future Connect Internship, he quickly took advantage of this opportunity and found a path in engineering. Chris is now attending PSU full-time. Chris is receiving the Renaissance Scholarship that will provide him with \$1,000 per term.

Mario is a third year Future Connect student who has excelled his entire career here at PCC. Mario's journey started 12 years ago as he left a refugee camp in the Congo. From there Mario found himself living with his family in Portland, where he graduated from David Douglas High School. Mario transferred to Oregon State University in the fall of 2013 and he has also received the Renaissance Scholarship and the Ford Family Scholarship. These two scholarships will pay close to 100% of his future college tuition. Mario is attending the OSU Pre-Pharmacy Honors program now in Corvallis and is proud to call himself an OSU Beaver.

Anthony is a 20-year-student who graduated from Roosevelt High School. When Anthony came to PCC he tested into developmental math, reading and writing. The Future Connect staff connected him to our Project Degree cohort-style classes for developmental coursework and within two terms he was taking college level courses and ready to enter the program he has always wanted to complete—the automotive collision repair program at the Rock Creek Campus. Anthony started the program in Fall Term 2012 and completed the program in Spring Term 2013. Anthony currently works in his community in North Portland.

Maria is a third year Future Connect Student whose interest in teaching brought her into college. Maria has dedicated the last two and half years at PCC completing coursework relevant to education and teaching. This fall 2013, Maria was accepted into the Portland Teachers Program at PCC. This program works with students of color who wish to become teachers in the local area. Maria is one of three current Future Connect students who have been accepted into his program and because of this she, and her peers, will pay no out of pocket expenses for her education through her Master's Degree, as long as she teaches within the Portland and Beaverton area upon graduation. She will transfer to PSU this fall as part of this program.



For the first time, Oregon's
younger generation is less
educated than its older one.

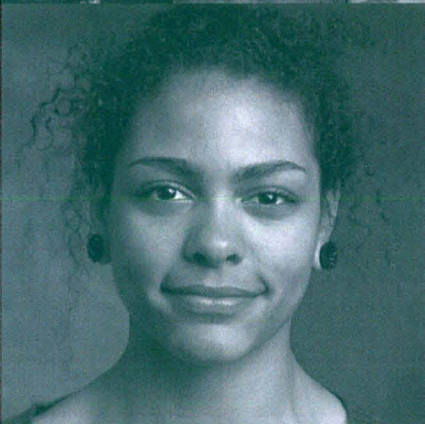
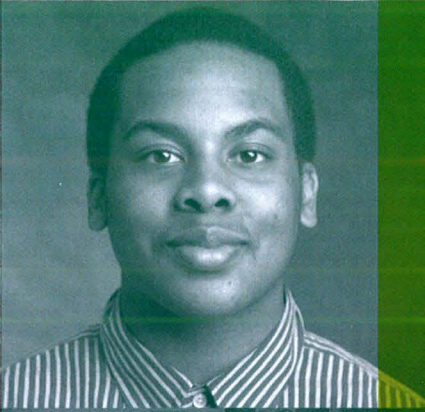


PCC's Future Connect
program is changing that.



**FUTURE
CONNECT**

PCC  Foundation
Where Opportunity Happens



The PCC Future Connect program is giving young people the opportunity to succeed in college and career.

WE HAVE A PROBLEM

ONLY ONE-THIRD of Multnomah County high school students will go on to college. **Only half of them will finish.**



Only half of Washington County high school students will go to college.



Only 40% of Washington County high school graduates with low incomes will.

At the same time, Georgetown University's Center on Education and the Workforce predicts that by 2020, **70% of jobs in Oregon will require postsecondary education.**



A community's educational attainment and its economic prosperity are directly linked. According to CEOs for Cities, if the Portland-metro area could increase its college degree attainment rate just one percent, the region would produce an additional \$1.6 billion in per capita income.

To ensure our region continues to thrive, we must create and expand a clear pathway for economically disadvantaged students to earn a college degree.

PCC HAS A SOLUTION THAT WORKS

PORTLAND COMMUNITY COLLEGE, with five decades of proven success helping students earn associate's degrees, transfer to universities and become workforce ready, has a solution: Future Connect.

Future Connect targets low-income, first-generation college students who aspire to attend college, but face barriers to success.

Scholarships + Student Support

= Success

Future Connect opens the door to college—each student receives a scholarship based on financial need. Without this money, these students would not have a shot at college.

But it also provides a guided path through college, whether that's completion of a certificate or degree at PCC or transfer to a four-year college. Without this support, these students would not have a shot at success.

College success coaches help students overcome obstacles and stay in school. They mentor students with personal, in-depth advising. They are there to help them manage college classes, juggle childcare, find transportation, and overcome self-doubt. It's the one-on-one support students receive at PCC that makes this program stand out.

Future Connect helps students go to college and complete college.

Student Stories



MARIUS' STORY

MARIUS IBUYE is a refugee of war-torn Congo who left Africa and emigrated to the U.S. to pursue a better life for himself and his family. He believes the Future Connect program guided him to where he is today: an Oregon State University student.

With assistance from dedicated success coaches who mapped out a plan and stood by ready to help when he found himself overwhelmed with the entire college application process, Ibuye, a 2011 David Douglas High School graduate, is reaching his educational goals.

"I really enjoyed all of my classes at PCC and the instructors were inspiring, encouraging and supportive. It wasn't only about getting good grades but also finding new ways to learn the class material," said Ibuye, who hopes to study in the College of Pharmacy at OHSU once he earns a bachelor's degree.

One major lesson he learned from Future Connect was the importance of regularly meeting

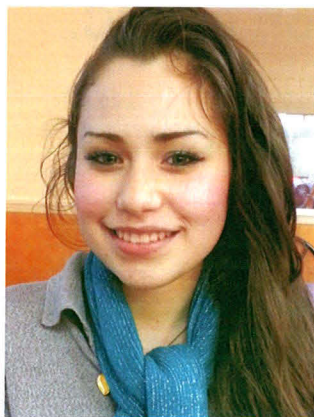
with instructors and other college support staff who took time to answer questions and give advice about transferring to OSU.

Once he completes his academic work, Ibuye hopes to become a pharmacist in Portland near his family.

"And now Future Connect coaches are also part of my family," he said.

"Not having the support of Future Connect at PCC and going straight to a four-year university would have been crazy. I feel I'm well prepared and now I can fly at OSU."

MARIUS IBUYE, Future Connect alum and current OSU student



DAISY'S STORY

AS SHE THOUGHT about life after high school graduation, Daisy Toledo considered a full-time job in food service as her best opportunity. Then she heard a counselor talk about Future Connect and she suddenly saw another path open before her.

"I never expected to have enough money to go to college," said the Century High School graduate. "The more I learned the more I realized that this is the perfect program for me."

At first she worried about juggling school, studying and a job but Future Connect coaches helped her create a time management plan. While her schedule is busy, she's thriving.

She's also become a more assertive, confident individual who knows how to meet her educational goals. With a 4.0 grade point average during her first term in college she's already researching four-year universities and careers in the medical field.

Now Daisy is sharing her talents with others. As a member of the Oregon Leadership Institute at PCC's Rock Creek Campus she's working with students on volunteerism and fundraising. She sees it as a good opportunity to network and learn new skills such as public speaking.

"I talk to my friends about Future Connect. I tell them that they can reach their goals because there is a lot of support," said Toledo.

"The classes have been challenging but I'm persistent and my success coach motivates me every day. I believe I have what it takes to be successful in college and to be successful in life."

DAISY TOLEDO, Future Connect student



BE PART OF THE SOLUTION

The problem of low college attainment in our community cannot be solved by one institution alone. Future Connect is an innovative public-private partnership that brings together local government, area businesses, private foundations, school districts, individuals, community organizations and the college.

PCC and donors to the PCC Foundation contribute half the cost of the program, which is then matched by the Cities of Beaverton, Hillsboro and Portland.

FROM SOME OF OUR FUNDERS

"Meyer Memorial Trust is a significant funder of PCC's Future Connect program because it helps youth from diverse racial, cultural and socioeconomic backgrounds succeed in higher education, making our community better for all, a high priority for our foundation."

– Doug Stamm, Meyer Memorial Trust

"We are steadfast supporters of the college and have seen firsthand the power and impact of Future Connect to change students' lives. There is no greater calling, or reward, than to see these young people flourish."

– Max & Carol Lyons, Hillsboro Aviation

"PGE Foundation's commitment to Future Connect comes from our desire to give first-generation, low-income college students the support and skills they need to succeed at family-wage skilled trades jobs available at companies like Portland General Electric."

– Carole Morse, PGE Foundation

Transform the lives of our region's disadvantaged youth and create the educated, thriving region we want to be—through the power of education at PCC.

When you make a gift to the PCC Foundation for Future Connect students, the Cities of Beaverton, Hillsboro and Portland will double your gift as part of a generous matching challenge, up to \$580,000 each year.

Your contribution is essential to helping the next generation of students achieve success. For an investment of just \$2,000, you get a student through a year of college in this innovative, results-oriented program. For \$4,000 you play an integral part in their achieving an associate's degree. That's real ROI.



Change lives through Future Connect. Learn more about the PCC Future Connect program and make a donation.

Call 📞 971.722.4382 or visit: 🌐 www.pcc.edu/foundation

FUTURE CONNECT CHANGES LIVES

FUTURE CONNECT LAUNCHED in fall 2011 with a group of 150 Multnomah County students. Since then, the program has enrolled over 600 students. In fall 2013, the program expanded to include recent high school graduates from Beaverton and Hillsboro. Students enroll as a cohort each fall and stay with the program from two to four years, depending on their goals and needs.

Future Connect students are making significant progress toward their educational and career goals. Future Connect students have interned with the legislature, local government and business; studied abroad; become student government leaders; and earned scholarships to universities. Future Connect graduates are continuing their studies at Portland State, Pacific University, Lewis and Clark College, Oregon State University and

"Future Connect helped me in so many ways. I had an amazing coach who inspired me and motivated me, who helped me push myself past my limits, helped me get through one of my toughest times and have a better understanding of where and who I want to be."

-RAQUEL BARAJAS,
Future Connect alumna and current Pacific University scholarship student

"Since my freshman year in high school, I have wanted to study computer science. Before, I could never picture myself in that type of career because it seemed too far from reality. With the help of the Future Connect team I now see a clear road to the career I dreamed of when I first started high school."

-ALEJANDRO SERNA,
Future Connect Student

Brigham Young University, among others. They are on track for careers in psychology, education, medicine, business, engineering, computer science, and more!

"Neither of my parents went to school beyond elementary school. Future Connect helped me get started because I didn't know anything about going to college. Before I attended PCC, I never knew how intelligent I was. I always told myself that I was not good enough for school. Now at PCC, I am on my way to success." -Fernando Serralta Poos

"The Future Connect program is the only reason I am in college. I had tried contacting other schools, desperate to get enrolled. I was saved by a spunky and driven beacon of light, my awesome [Future Connect] success coach." -Denae Miller



FOCUSES ON
STUDENTS
WHO NEED
IT THE MOST

90%

ARE LOW-INCOME

56%

have a household
income less than \$20K

83% will be the first
in their families to
complete college

70% are students
of color

AND ACHIEVES
SUCCESS

70%

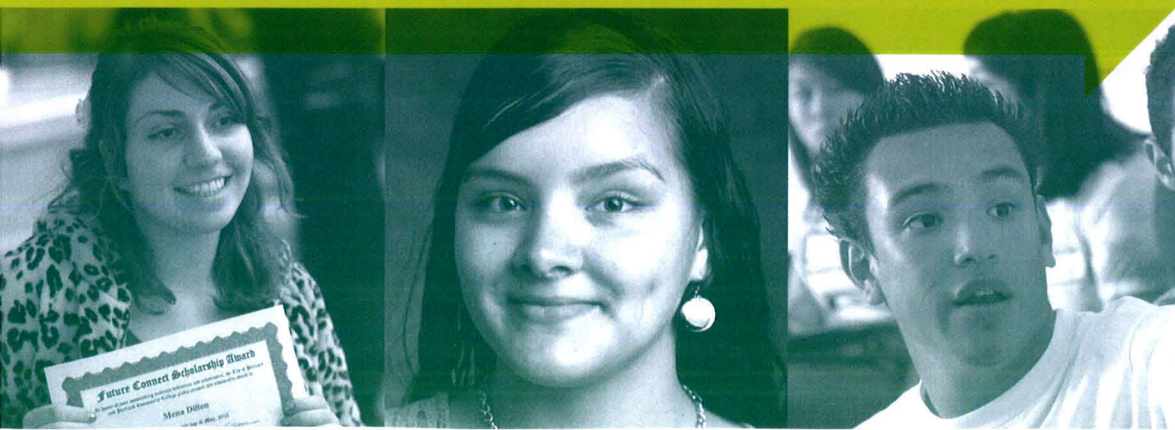
OF FUTURE
CONNECT
STUDENTS
CONTINUE ON TO
THEIR SECOND
YEAR OF COLLEGE.

Students who
continue have an
average GPA of 2.8

THIS IS MORE THAN

3x

THE 20% SUCCESS
RATE of college
students from similar
backgrounds who don't
receive these services.



“When I was in high school, I did not really have anyone who believed in me. Everyone in my family told me I could not make it, I would not graduate, but I did. Because of Future Connect, I am able to pursue my dream.”

–**MEYYIEN SAEPHARN**, *Future Connect Student*

Hoffman Construction knows the value of supporting access to education. That’s why we support PCC’s Future Connect program. Ensuring these students succeed is vital to the growth and prosperity of our region’s economy and the local communities where they live and work.

–**WAYNE DRINKWARD**, *Hoffman Construction Company*

“We believe in students until they are ready to believe in themselves.”

–**JOSE ESPARZA**, *Future Connect Success Coach*

PCC is leading the way to meeting Oregon’s 40-40-20 education goals with programs like Future Connect. With even a modest investment, donors can change a young person’s life forever for the better. That kind of impact is amazing. That’s why we are supporters and why we encourage others to invest in the program and its students.”

–**KIMBERLY COOPER AND JON JAQUA**



To learn more about the PCC Future Connect program

PCC  **Foundation**

call  971.722.4382 or visit:  www.pcc.edu/foundation

12000 S.W. 49th Ave., Portland, OR 97219

P.O. Box 19000, Portland, OR 97280-0990



**Portland
Community
College**



Agenda No.
REPORT
 Title

Accept report from Portland Community College on the current work of Future Connect (Report)

<p>INTRODUCED BY Commissioner/Auditor: Mayor Hales</p>	<p>CLERK USE: DATE FILED <u>JAN 24 2014</u></p>
<p>COMMISSIONER APPROVAL</p> <p>Mayor—Finance and Administration - Hales </p> <p>Position 1/Utilities - Fritz </p> <p>Position 2/Works - Fish </p> <p>Position 3/Affairs - Saltzman</p> <p>Position 4/Safety - Novick</p>	<p style="text-align: right;">LaVonne Griffin-Valade Auditor of the City of Portland</p> <p>By: Deputy</p>
<p>BUREAU APPROVAL Bureau: Office of Mayor</p>	<p>ACTION TAKEN: JAN 29 2014 ACCEPTED</p>
<p>Prepared by: Rachael Wiggins Date Prepared: 1/22/2014</p>	
<p>Financial Impact & Public Involvement Statement Completed <input checked="" type="checkbox"/> Amends Budget <input type="checkbox"/></p>	
<p>City Auditor Office Approval: required for Code Ordinances</p>	
<p>City Attorney Approval: required for contract, code, easement, franchise, charter, Comp Plan</p>	
<p>Council Meeting Date Jan 29, 2014</p>	

AGENDA
<p>TIME CERTAIN <input checked="" type="checkbox"/> Start time: <u>10:00</u></p> <p>Total amount of time needed: 30 min (for presentation, testimony and discussion)</p>
<p>CONSENT <input type="checkbox"/></p>
<p>REGULAR <input type="checkbox"/> Total amount of time needed: _____ (for presentation, testimony and discussion)</p>

FOUR-FIFTHS AGENDA	COMMISSIONERS VOTED AS FOLLOWS:		
		YEAS	NAYS
1. Fritz	1. Fritz	✓	
2. Fish	2. Fish	✓	
3. Saltzman	3. Saltzman	_____	_____
4. Novick	4. Novick	✓	
Hales	Hales	✓	