

DRAWING INDEX

BRETT SCHULZ
ARCHITECT

1111 E Burnside St., #303
Portland, Oregon 97214
503-222-9099
brett@brettschulz.com
www.brettschulz.com

GUERRILLA DEVELOPMENT

THE DUMBELL

BLOCK 76
11 E. BURNSIDE ST.
PORTLAND, OREGON
97214

PROJECT TEAM

OWNER:
GUERRILLA DEVELOPMENT
KEVIN CARMICHAEL
1111 E BURNSIDE ST. SUITE 300
PORTLAND, OR 97214
503.222.9099

DESIGN ARCHITECT:
BRETT SCHULZ/ARCHITECT
BRETT SCHULZ
1111 E BURNSIDE ST. SUITE 300
PORTLAND, OR 97214
503.222.9099
bretts@brettschulz.com

ARCHITECT OF RECORD:
FJA ARCHITECTURE AND INTERIORS
TROY ANAKORITH
529 SW VALMUEL, SUITE 800
PORTLAND, OREGON 97204

STRUCTURAL ENGINEER:
DOE ENGINEERS
WADE VOLKE
XXXXXX
XXXXXXX

CIVIL ENGINEER:
CLASING CIVIL ENGINEERS
DOY CLASING
571 SE WASHINGTON STREET, SUITE 205
PORTLAND, OREGON 97214

PROJECT DESCRIPTION

NEW CONSTRUCTION OF MULTIFAMILY 3 OVER 1 COMMERCIAL OFFICE (TYPE II) IN OVER PARKING AND RETAIL PODIUM (TYPE I) IN PODIUM SHALL CONTAIN APPROXIMATELY 11,800-SF, SF PARKING AND 2,100-SF, SF RETAIL ALONG GROUND LEVEL. STREET FRONTAGES OFFICE SPACES ABOVE PODIUM ARE 3 FLOORS AVERAGE IN AREA. SF PER FLOOR OFFICES OCCUR IN TWO IDENTICAL BUILDING WINGS JOINED BY A STAIR AND ELEVATOR TOWER AND CONNECTING BRIDGE/SERVICE STRUCTURE.

VICINITY MAP

DATE: JANUARY 13, 2014
DRAWN: BSC
CHECKED: BJS
APPROVED:
REVISIONS:

SCALE: AS NOTED
COVER SHEET

A000

BRETT SCHULZ
ARCHITECT

1111 E Burnside St., #303
Portland, Oregon 97214
503-222-9099

brett@brettschulz.com
www.brettschulz.com

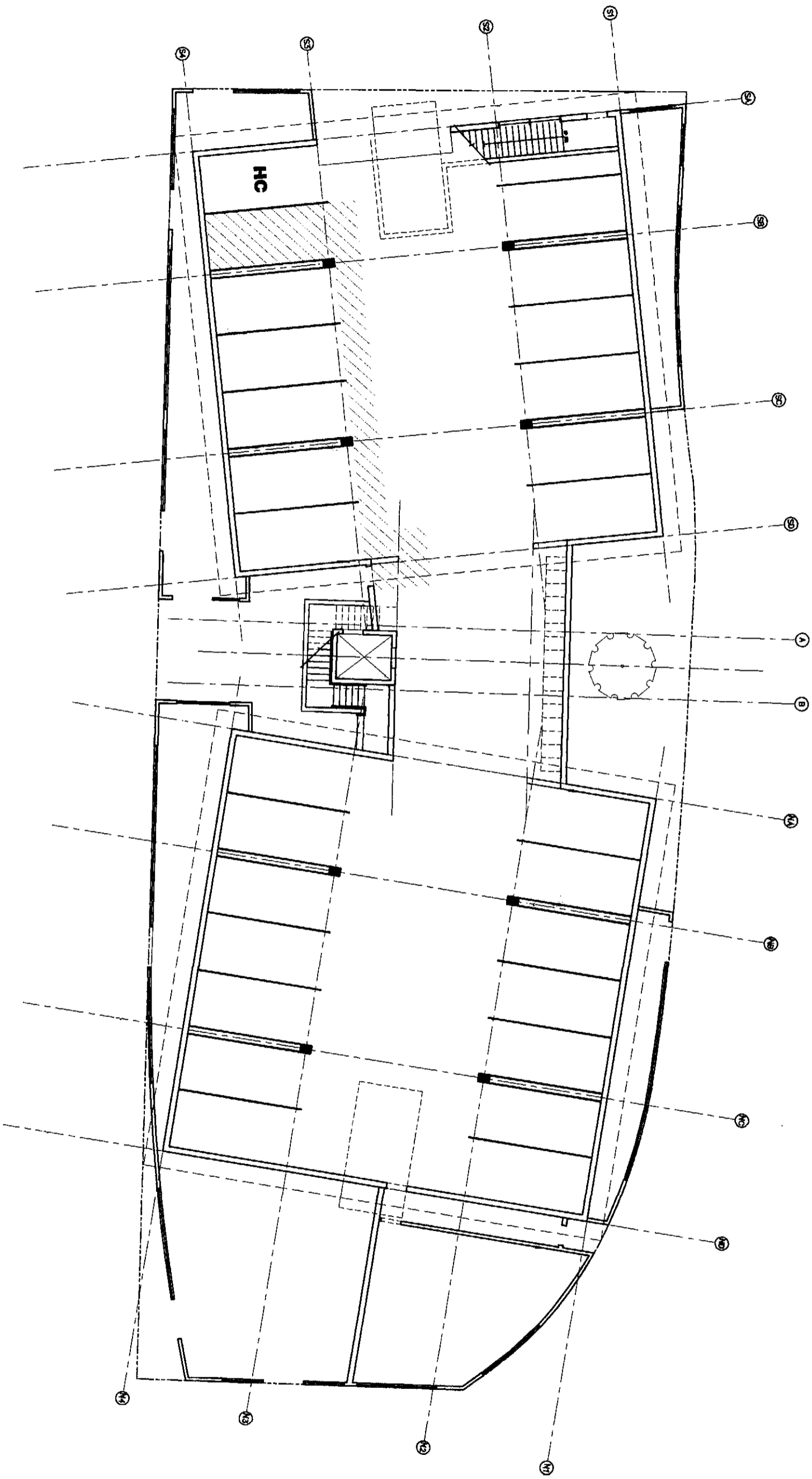
GUERRILLA DEVELOPMENT

THE DUMBELL

BLOCK 76
11 E. BURNSIDE ST.
PORTLAND, OREGON
97214

DATE: JANUARY 13, 2014
DRAWN: BSC
CHECKED: BBS
APPROVED:
REVISIONS:

SCALE: 1/8" = 1'-0"
GROUND FLOOR
PLAN



A101

BRETT SCHULZ
ARCHITECT

1111 E Burnside St., #303
Portland, Oregon 97214
503-222-9099

brett@brettschulz.com
www.brettschulz.com

GUERRILLA DEVELOPMENT

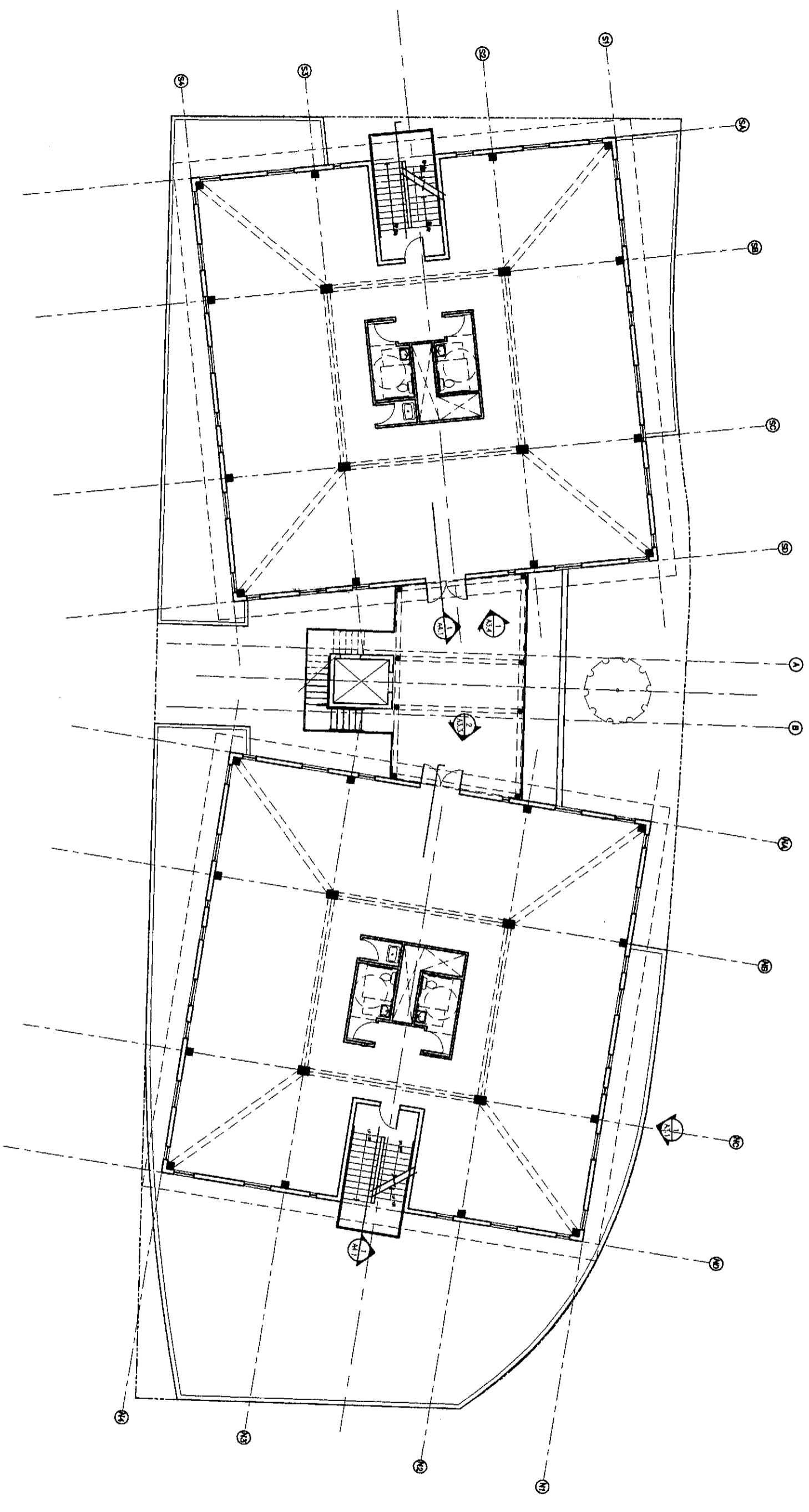
THE DUMBELL

BLOCK 76
11 E. BURNSIDE ST.
PORTLAND, OREGON
97214

PRELIMINARY
PRICING

DATE: JANUARY/MARCH 2014
DRAWN: BSC
CHECKED: BBS
APPROVED:
REVISIONS:

SCALE: 1/8" = 1'-0"
SECOND FLOOR
PLAN



BRETT SCHULZ
ARCHITECT

1111 E Burnside St., #303
Portland, Oregon 97214
503-222-9099
brett@brettschulz.com
www.brettschulz.com

GUERRILLA DEVELOPMENT

THE DUMBELL

BLOCK 76
11 E. BURNSIDE ST.
PORTLAND, OREGON
97214

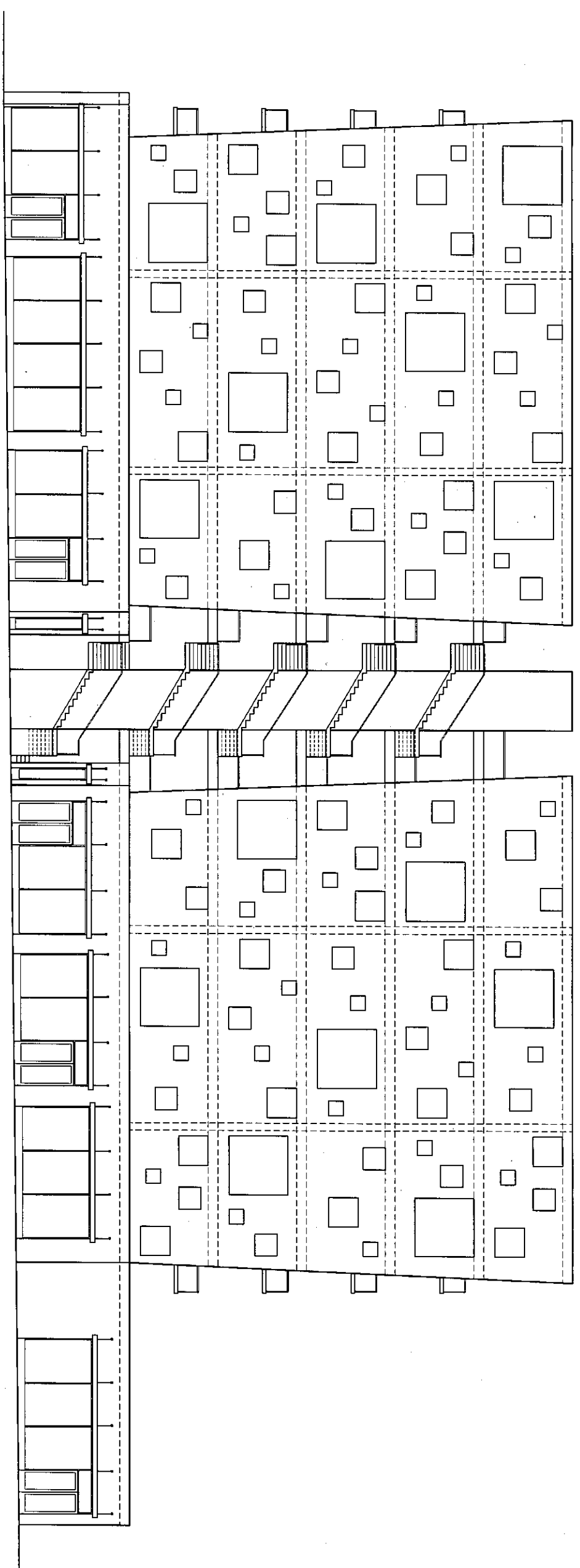
DATE: JANUARY 13, 2014

DRAWN: BSC

CHECKED: BJS

APPROVED:

REVISIONS:



1 EAST ELEVATION

1/8" = 1'-0" @ 22X34, 1/16" = 1'-0" @ 11X17



SCALE: 1/8" = 1'-0"
EXTERIOR
ELEVATIONS

A201

BRETT SCHULZ
ARCHITECT

1111 E Burnside St., #303
Portland, Oregon 97214
503-222-9099

brett@brettschulz.com
www.brettschulz.com

GUERRILLA DEVELOPMENT

THE DUMBELL

BLOCK 76
11 E. BURNSIDE ST.
PORTLAND, OREGON
97214

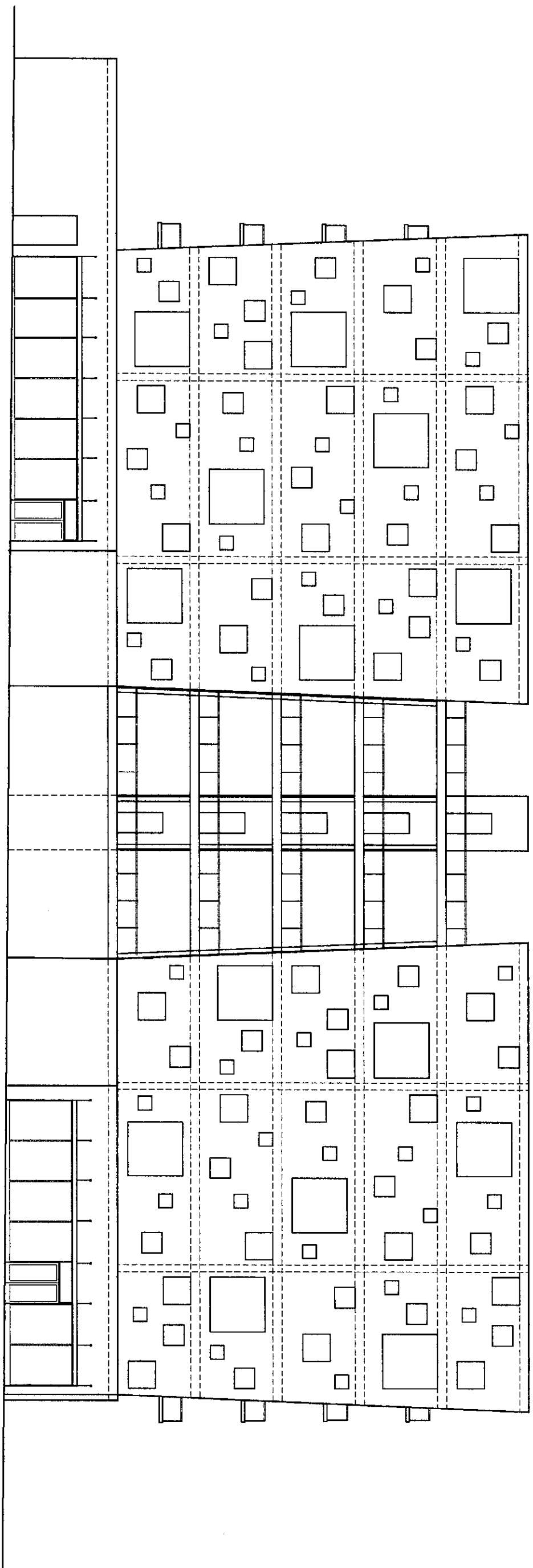
DATE: JANUARY 13, 2014

DRAWN: BSC

CHECKED: BJS

APPROVED:

REVISIONS:

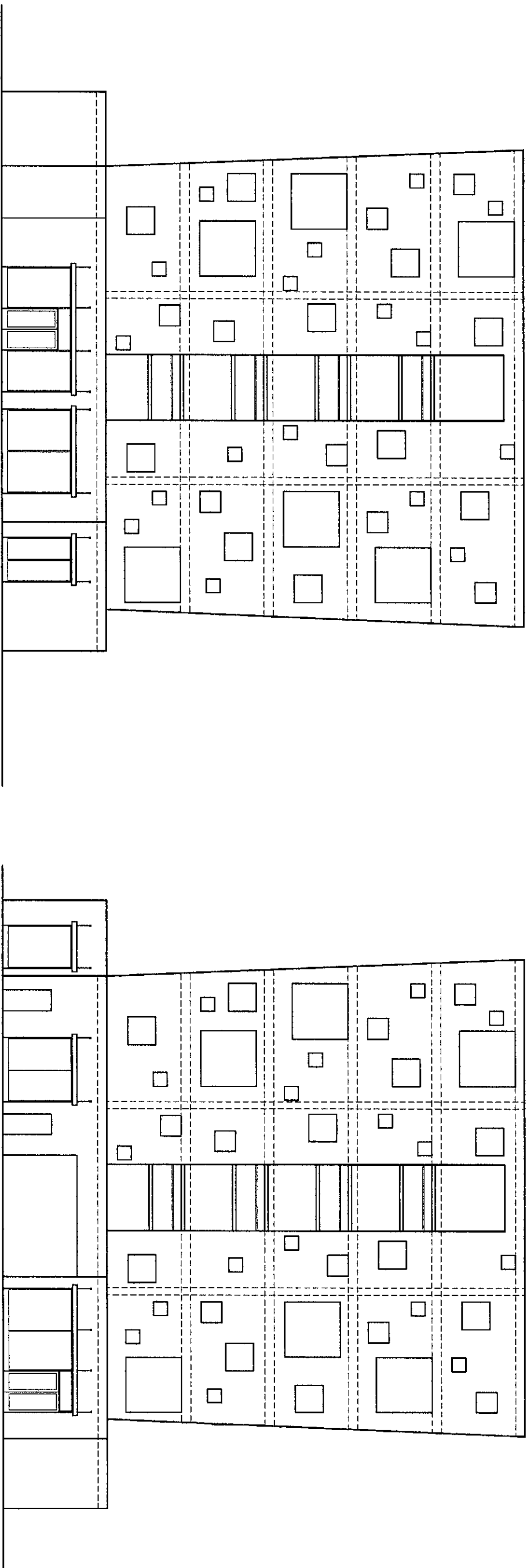


1 WEST ELEVATION
1/8" = 1'-0" @ 22X34, 1/16" = 1'-0" @ 11X17



SCALE: 1/8" = 1'-0"
EXTERIOR
ELEVATIONS

A202



1 NORTH ELEVATION
1/8" = 1'-0" @ 22X34, 1/16" = 1'-0" @ 11X17



2 SOUTH ELEVATION
1/8" = 1'-0" @ 22X34, 1/16" = 1'-0" @ 11X17



GUERRILLA DEVELOPMENT
THE DUMBELL

BLOCK 76
11 E. BURNSIDE ST.
PORTLAND, OREGON
97214

DATE: JANUARY 13, 2014
DRAWN: BSC
CHECKED: BIS
APPROVED:
REVISIONS:

SCALE: 1/8" = 1'-0"
EXTERIOR
ELEVATIONS

BRETT SCHULZ
ARCHITECT

1111 E Burnside St., #303
Portland, Oregon 97214
503-222-9099

brett@brettschulz.com
www.brettschulz.com

GUERRILLA DEVELOPMENT

THE DUMBELL

BLOCK 76
11 E. BURNSIDE ST.
PORTLAND, OREGON
97214

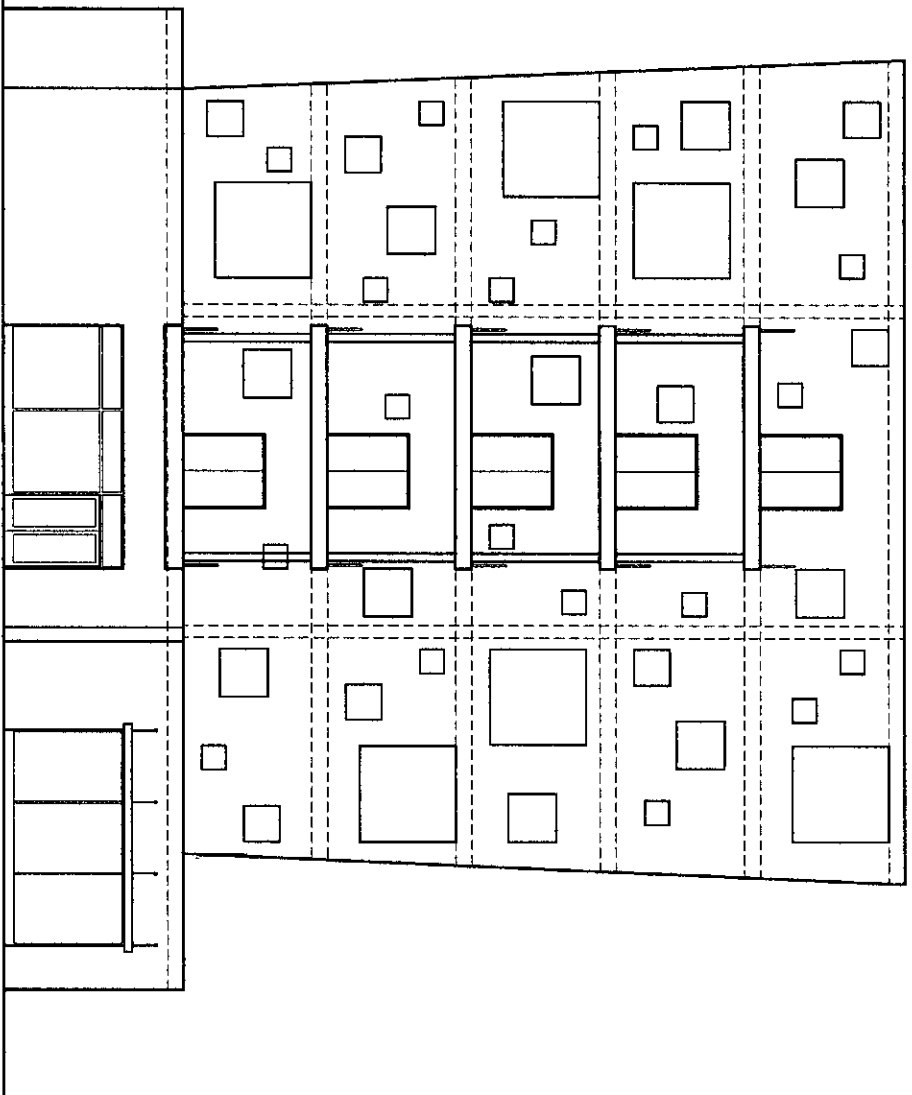
DATE: JANUARY 13, 2014

DRAWN: BSC

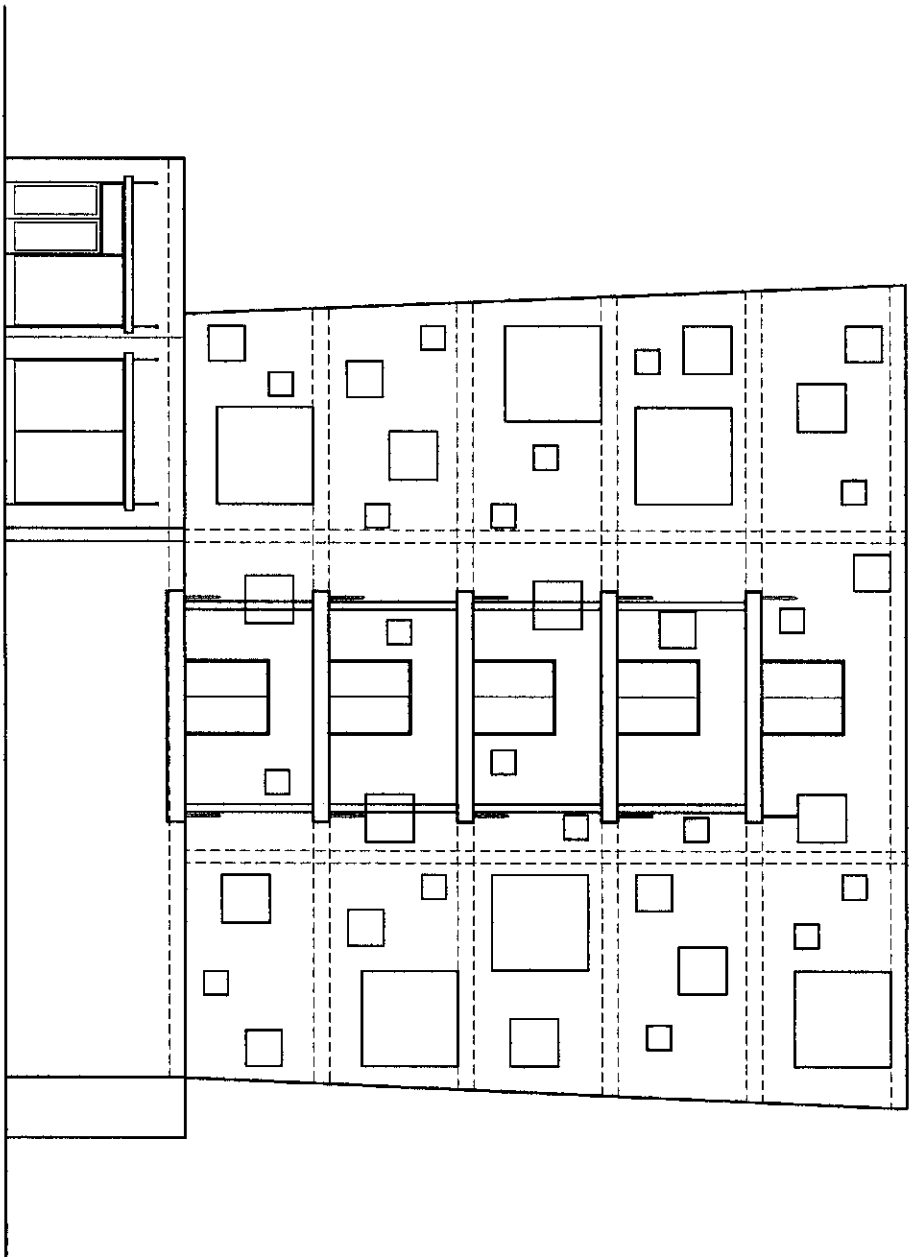
CHECKED: BJS

APPROVED:

REVISIONS:



2 SOUTH ELEVATION
1/8" = 1'-0" @ 22X34, 1/16" = 1'-0" @ 11X17



1 NORTH ELEVATION
1/8" = 1'-0" @ 22X34, 1/16" = 1'-0" @ 11X17



SCALE: 1/8" = 1'-0"
EXTERIOR
ELEVATIONS

BRETT SCHULZ
ARCHITECT

1111 E Burnside St., #303
Portland, Oregon 97214
503-222-9099

brett@brettschulz.com
www.brettschulz.com

GUERRILLA DEVELOPMENT

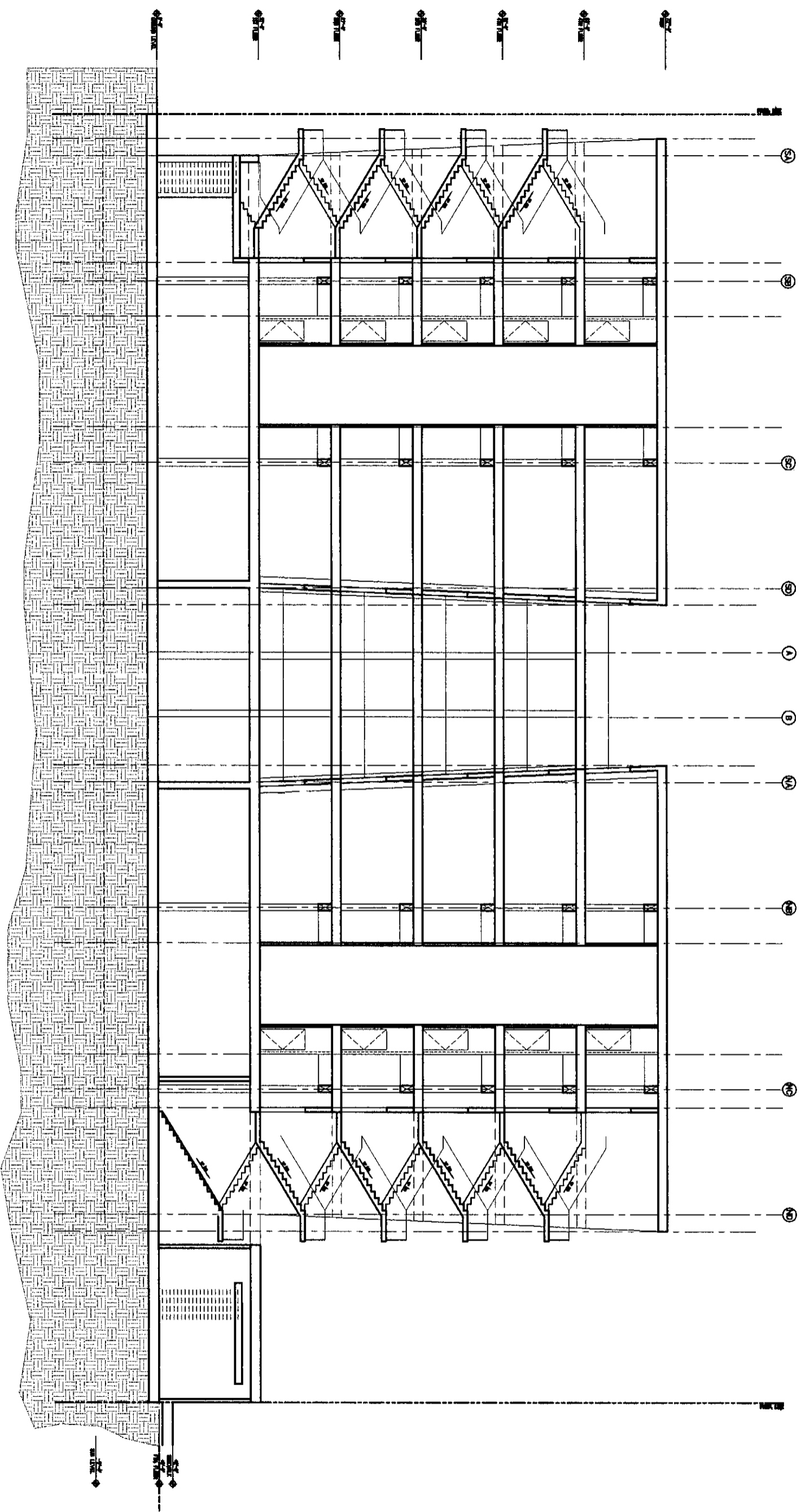
THE DUMBELL

BLOCK 76
11 E. BURNSIDE ST.
PORTLAND, OREGON
97214

PRELIMINARY
PRICING

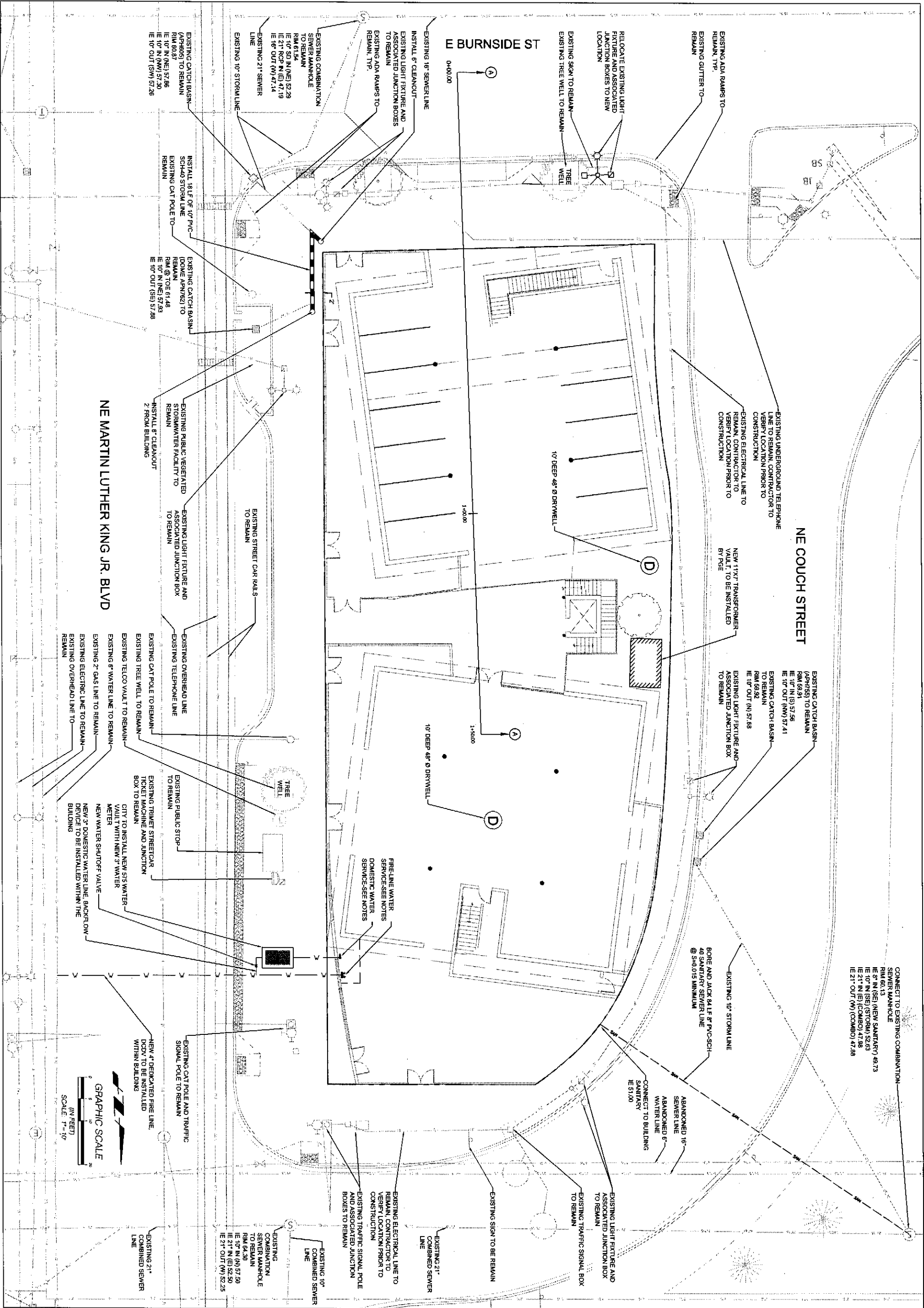
DATE: JANUARY/03/2014
DRAWN: BSC
CHECKED: BIS
APPROVED:
REVISIONS:

SCALE: 1/8" = 1'-0"
SECTION



1 BUILDING SECTION
1/8" = 1'-0" @ 22X34, 1/16" = 1'-0" @ 11X17





CONNECT TO EXISTING COMBINATION
SEWER MANHOLE
RIM 60.13
IE 5' N (SE) (NEW SANITARY) 49.73
IE 10' N (SE) (STORM) 52.63
IE 21' N (E) (COMB) 47.88
IE 21' OUT (W) (COMB) 47.88

BRETT SCHULZ
ARCHITECT

1111 E Burnside St., #303
Portland, Oregon 97214
503-222-9099

brett@brettschulz.com
www.brettschulz.com

cushing
Don Cushing Associates
Civil Engineers
107 SE Washington St., Suite 265
Portland, OR 97214
Phone: (503) 387-5331
www.cushing-engr.com



GUERRILLA DEVELOPMENT
THE DUMBELL

BLOCK 76
E. BURNSIDE ST.
PORTLAND, OREGON
92XXX

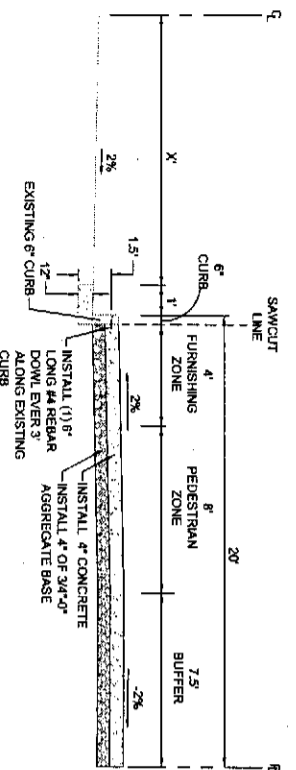
PERMIT # XX-XXXXXX
APPEAL #XXXX

DATE: 11/27/13
DRAWN: SAR
CHECKED: AKS
APPROVED:

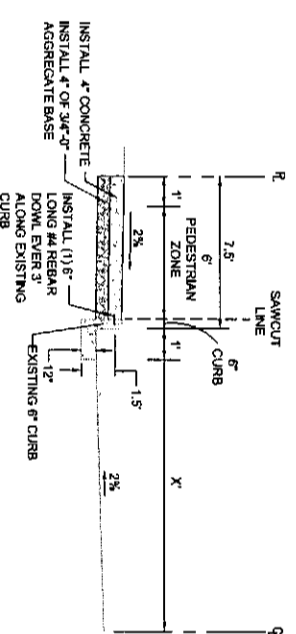
REVISIONS:

SCALE:
**COMPOSITE
UTILITY
PLAN**

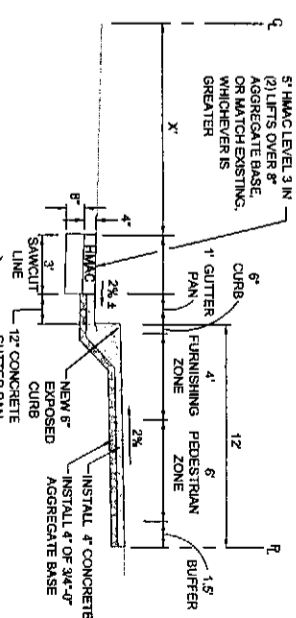
C1.0



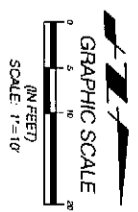
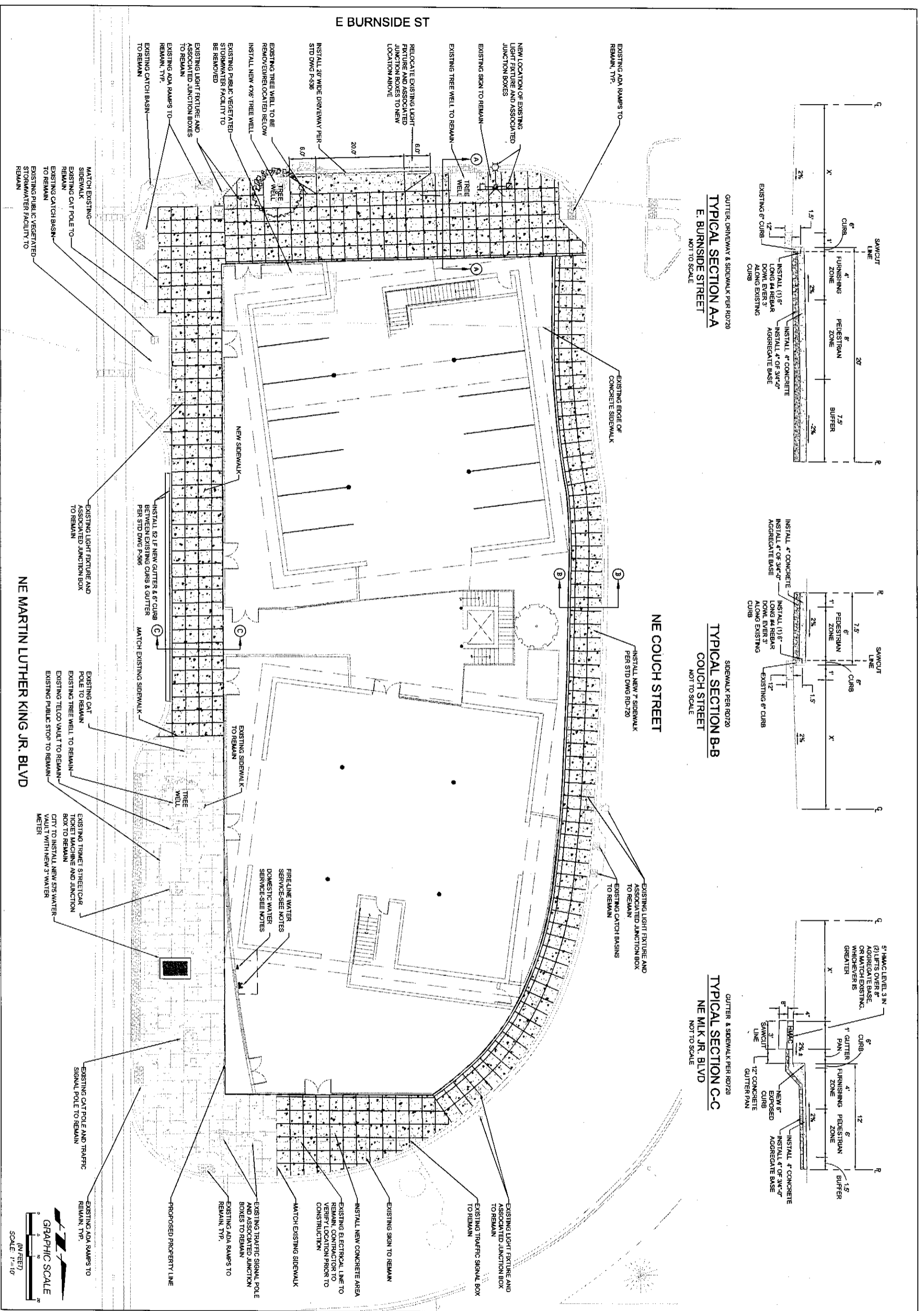
TYPICAL SECTION A-A
E. BURNSIDE STREET
 NOT TO SCALE



TYPICAL SECTION B-B
COUCH STREET
 NOT TO SCALE



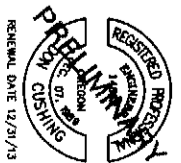
TYPICAL SECTION C-C
NE MILK JR. BLVD
 NOT TO SCALE



BRETT SCHULZ
 ARCHITECT

1111 E Burnside St., #303
 Portland, Oregon 97214
 503-222-9099
 brett@brettschulz.com
 www.brettschulz.com

cushing
 Don Cushing Associates
 Civil Engineers
 107 SE Washington St., Suite 265
 Portland, OR 97214
 Phone: (503) 387-5331
 www.cushing-engr.com



GUERRILLA DEVELOPMENT

THE DUMBBELL

BLOCK 76
 E. BURNSIDE ST.
 PORTLAND, OREGON
 972XX

PERMIT # XX-XXXXXX
 APPEAL #XXXX

DATE: 11/27/13
 DRAWN: SAR
 CHECKED: AKS
 APPROVED:

SCALE:
 RIGHT OF WAY
 COMPOSITE
 PLAN

C2.0



VIEW LOOKING WEST

THE DUMBELL BUILDING

NE M.L.K. BLVD & E BURNSIDE ST

01/13/2014



VIEW LOOKING NORTHEAST

THE DUMBELL BUILDING

NE M.L.K. BLVD & E BURNSIDE ST

01/13/2014



VIEW LOOKING NORTH

THE DUMBELL BUILDING

NE M.L.K. BLVD & E BURNSIDE ST

01/13/2014



VIEW OF RETAIL AT CORNER OF NE MLK BLVD AND E BURNSIDE ST

THE DUMBBELL BUILDING

NE M.L.K. BLVD & E BURNSIDE ST

01/13/2014



VIEW OF OFFICE BUILDING ENTRANCE

THE DUMBBELL BUILDING

NE M.L.K. BLVD & E BURNSIDE ST

01/13/2014