

The Abigail

Design Review Exhibits

BRIDGE HOUSING / ANKROM MOISAN
01.23.2014



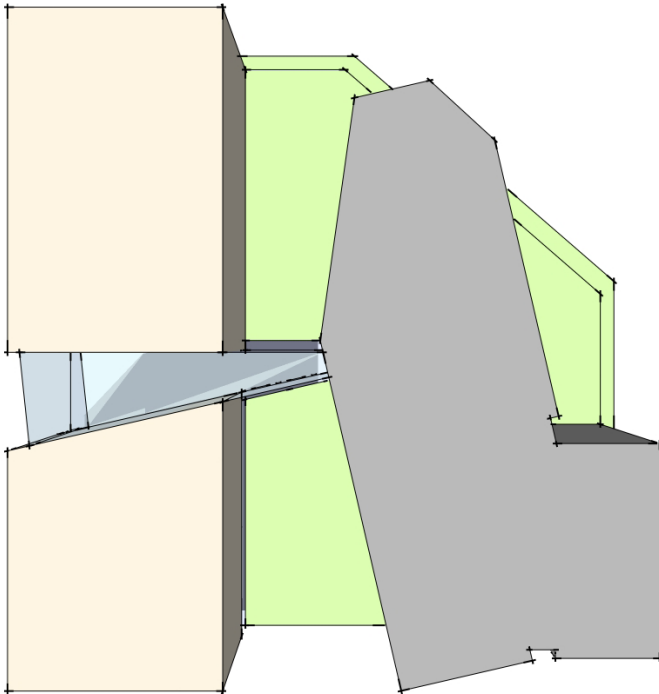
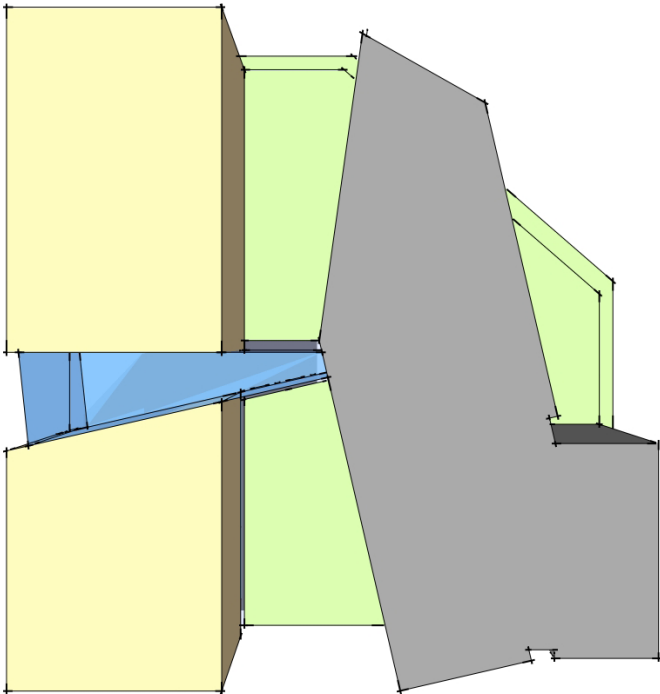
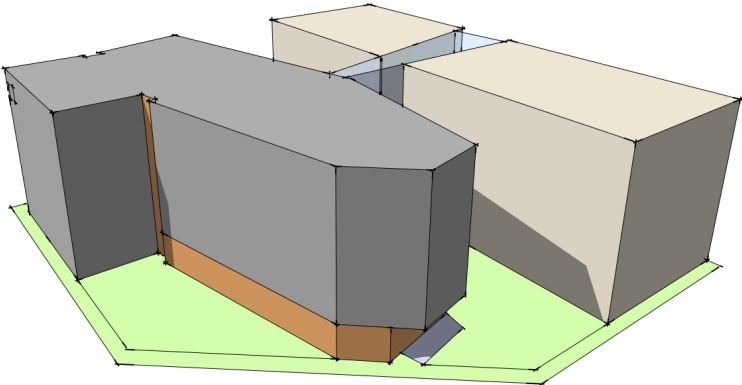
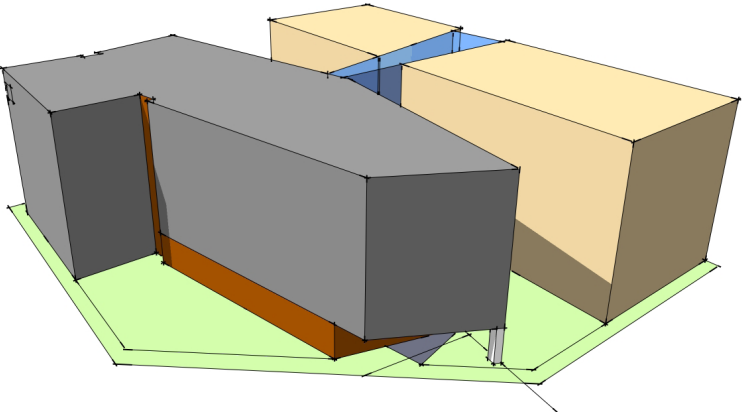
LU 13-189059 DZM

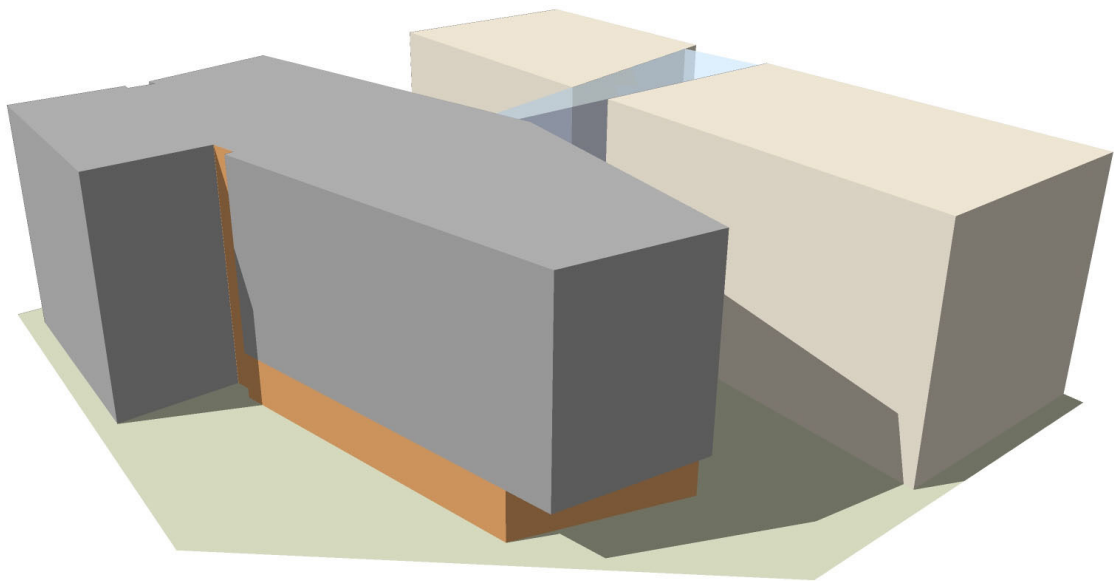
Ankrom Moisan Architects, Inc.
ARCHITECTURE INTERIORS URBAN DESIGN BRANDING
ankrommoisan.com

6720 SW Macadam Ave / Suite 100
Portland, OR 97219
503.245.7100

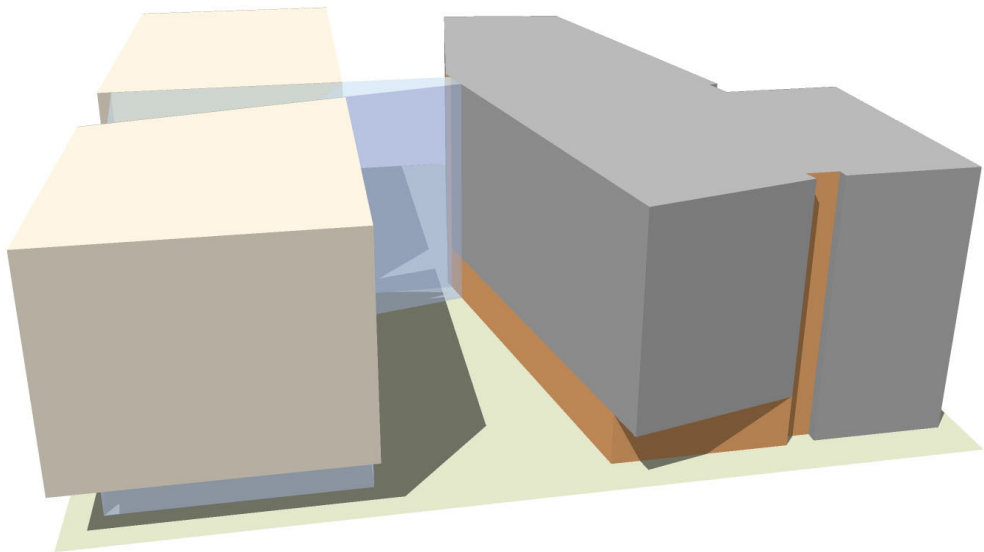
117 S Main St / Suite 400
Seattle, WA 98104
206.576.1600



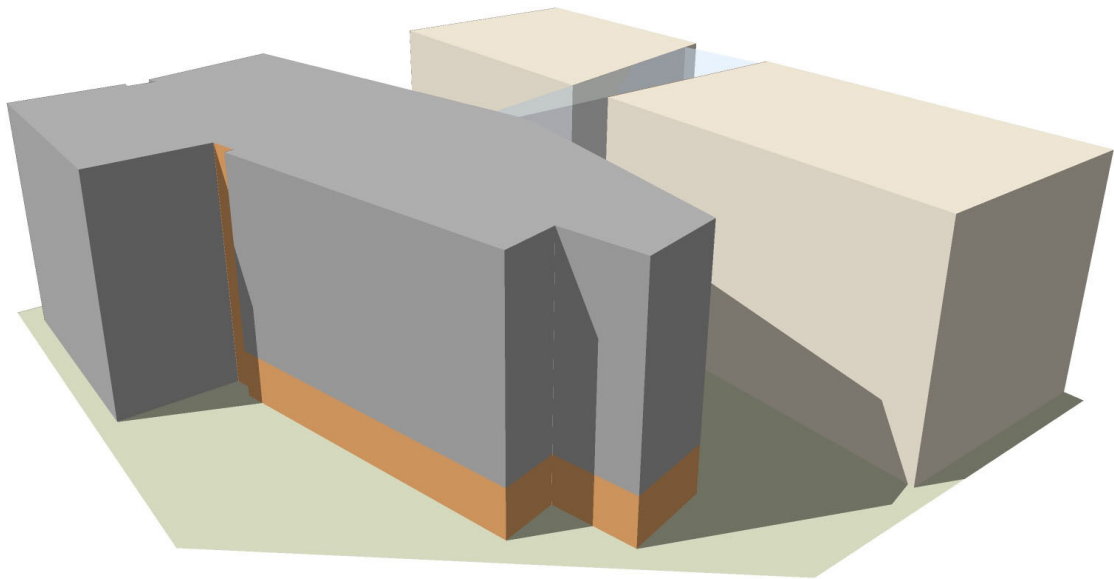




MASSING AT NORTH END OF EAST BUILDING (CURRENT DESIGN)



MASSING AT SOUTH END OF EAST BUILDING



MASSING AT NORTH END OF EAST BUILDING (PREVIOUS DESIGN)

DESIGN FOR COHERENCY

The massing at the north end of the east building massing has been re-designed to have a similar form to the massing at the south end of the east building. The metal panels along the east elevation form an L-shape that counteracts the protruding angular brick form above similar to the south end. The common angular forms also reflect the unique angles of the site created by the railroad tracks. There is design coherency the system of common forms that compose the East Building.



Courtyards

The building form divides the green spaces into three distinct courtyards.

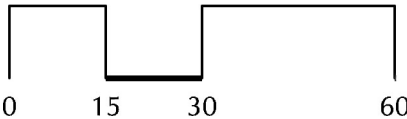
- The south courtyard is similar to the previous submittal. The large storm-water planter adjacent to the west building has been removed
- The north courtyard has been changed to be dense with storm water planters and vegetation. The hard surface is a meandering path that links around to the east yard
- The east yard has been changed to be a kids' play area. This is linked to the building interior with the addition of a laundry/lounge.
- The fence around the NE corner of the property has been changed to be a more transparent metal fence

Program:

- 20 Residential Units
- 12 short term bike spaces
- Community Room
- Cafe



1' = 30'-0"



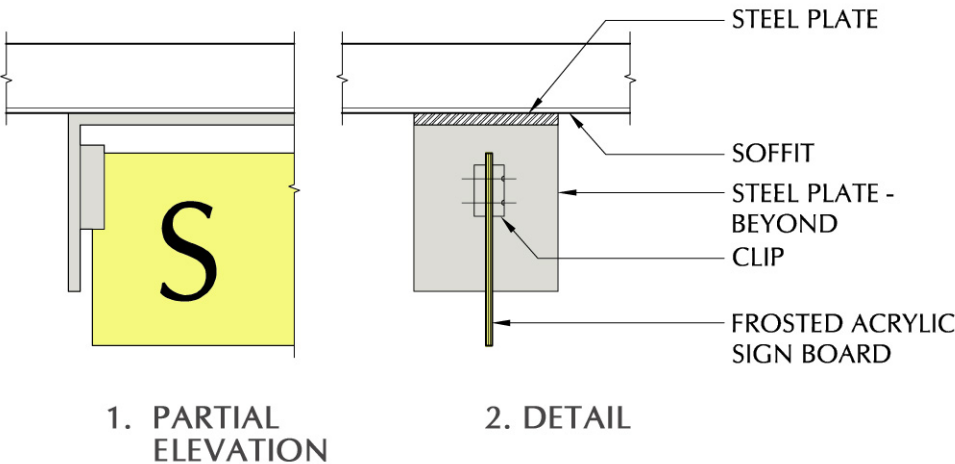












1 - Retail Sign













