

**DUPLEX MANIFOLD.**

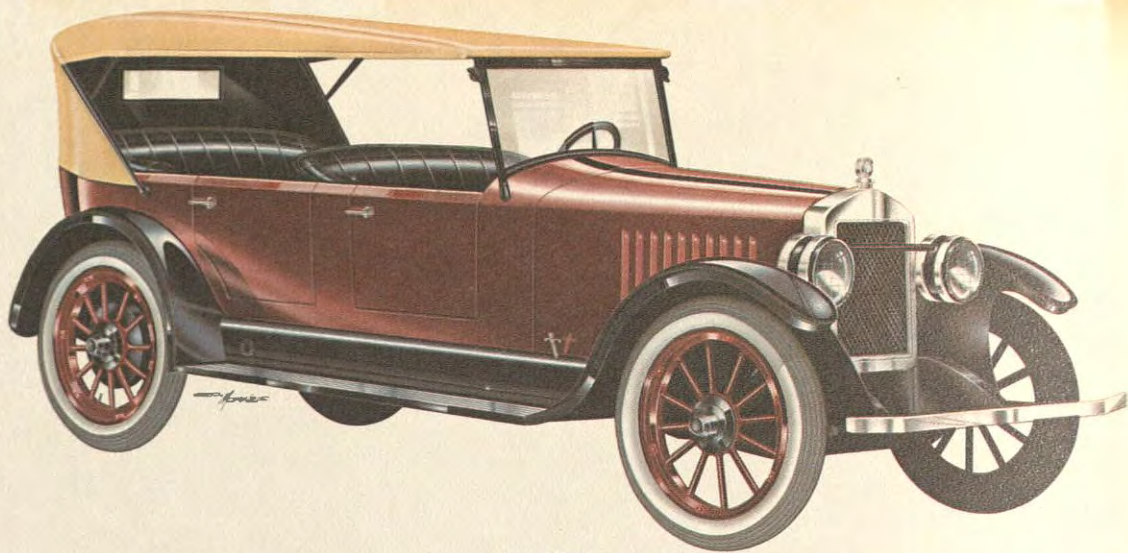
Can you tell me where I can have a special manifold cast for a Ford motor? I want it as follows: The intake manifold to be cast inside the exhaust manifold about the way the Avery Tractor Co. have it on their 5-10 tractor.  
Wyola, Mont.  
N. H. Hilton.

It will be quite unnecessary for you to go to the large expense of having a special super heating manifold cast for your Ford. There are several of these devices on the market at the present time, among them is the Wilmo made by the Whittier Company, First National Bank Bldg., Chicago, Ill., and the Peck Superheater, which is made by the Peck Superheat Company, of Elkhart, Ind.

**RECONSTRUCTING A FORD.**

How would it be to install a Woods Mobilette twenty-two horsepower three-speed motor in a Ford chassis and how it would work?  
Albert City, Ia.  
Francis Anderson.

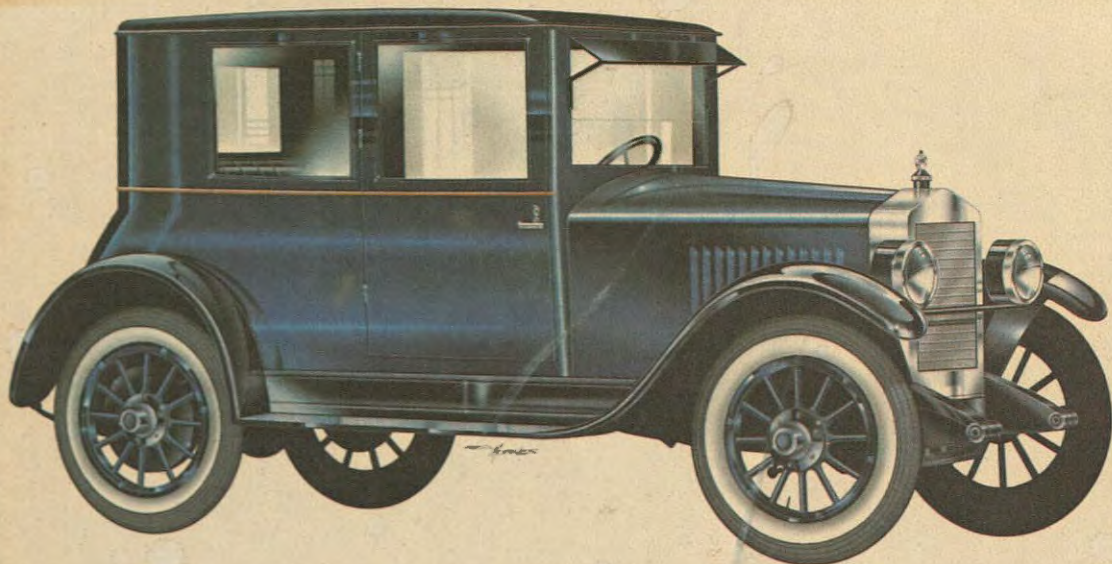
If you are a first-class mechanic, have lots of time and a whole lot of money to spend on it, you no doubt can make a fairly good job of installing a Woods Mobilette power plant on a Ford chassis. The results, however, are bound to fall far short of your expectations. We really see no sense in trying to attach a motor which was made for an entirely different type of chassis to the Ford. The time, labor and worry you put into it might well be spent on more profitable work.  
1918



**EARL**

Now in its second year of manufacture, Earl Motors, Inc., of Jackson, Michigan, offers this Earl touring model for \$1,285. Its low, graceful lines are, in the words of its builders, designed to appeal to those who take an honest pride in their belongings, who seek to rise above the commonplace in their homes, their dress and their cars.

1922



**ESSEX**

This Essex coach, a product of the Hudson Motor Car Company of Detroit, Michigan, is expected to be a trend-setter, offering a popularly-priced closed car to the motoring public. This is the first coach offered under the Essex banner and it is offered at a selling price of \$1,345, just \$250 more than the touring car model.

1922

Had 2 like the above, a '23 and '24. WKH.

**NO MORE TIRES!**  
**MAKE YOURS LAST LONGER!**

Travel by **SUPER-COACH** to **HELP NATIONAL DEFENSE**

You use much less rubber traveling by bus than you do driving a car! Go by thrifty Union Pacific Super-Coach, and save your car for the times when you really need it. You'll ride in heat-conditioned comfort, at less cost than driving . . . saving money for bonds and rubber for victory!

<b>SALT LAKE</b> \$13.00	<b>CENTRAL BUS DEPOT</b> S. W. 6th and Taylor AT 5171
Boise - - - - \$8.30	
Spokane - - - \$6.50	
La Grande - - - \$4.95	
Pendleton - - - \$3.90	

**UNION PACIFIC STAGES**  
*The Overland-Wonderland Route*

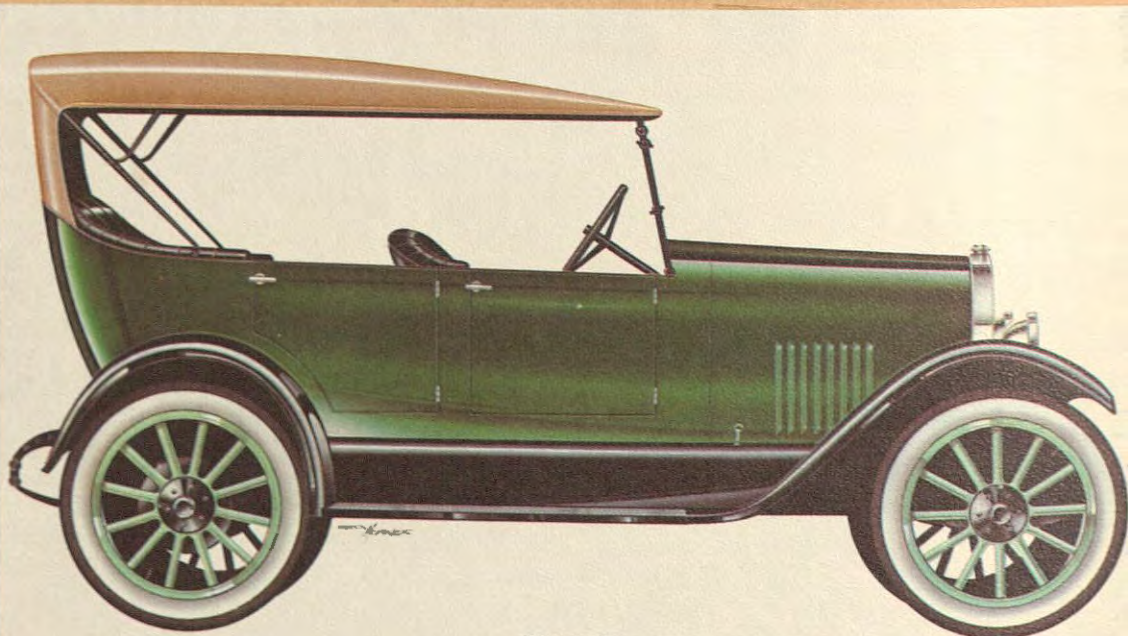
OREGONIAN \* \* \* January 29, 1942



This Rolls-Royce limousine was built for the late Constance Bennett, 1930s film star. It is on the Joe Dobbins used car lot on the northwest corner of Union Ave. and Couch St. in the late 1940s.

A204-011.396

76



**STAR**

Last year, W. C. Durant left General Motors, having been replaced as president by Pierre S. DuPont in 1920, to form his own company in Flint, Michigan. In this, the Durant Motor Company's first year of production, the firm is making a bid for the low-price market, offering this Star touring car for the reasonable price of \$348.

1922