

The Abigail

Design Review Exhibits

BRIDGE HOUSING / ANKROM MOISAN
12.19.2013



LU 13-189059 DZM

Ankrom Moisan Architects, Inc.
ARCHITECTURE INTERIORS URBAN DESIGN BRANDING
ankrommoisan.com

6720 SW Macadam Ave / Suite 100
Portland, OR 97219
503.245.7100

117 S Main St / Suite 400
Seattle, WA 98104
206.576.1600



Table of Contents

4 Level 1 Plan - November 21, Design

5 Level 1 Plan - Proposed Design

6 Perspective View - West- November 21, Design

7 Perspective View - West - Proposed Design

9 Perspective View - Canopy- Proposed Design

10 Perspective View - Southwest Corner - November 21, Design

11 Perspective View - Southwest Corner - Proposed Design

12 Perspective View - South Courtyard - November 21, Design

13 Perspective View - South Courtyard - Proposed Design

14 Perspective View - South - November 21, Design

15 Perspective View - South - Proposed Design

16 Perspective View - Southeast Corner - November 21, Design

17 Perspective View - Southeast Corner - Proposed Design

18 Perspective View - East - November 21, Design

19 Perspective View - East- Proposed Design

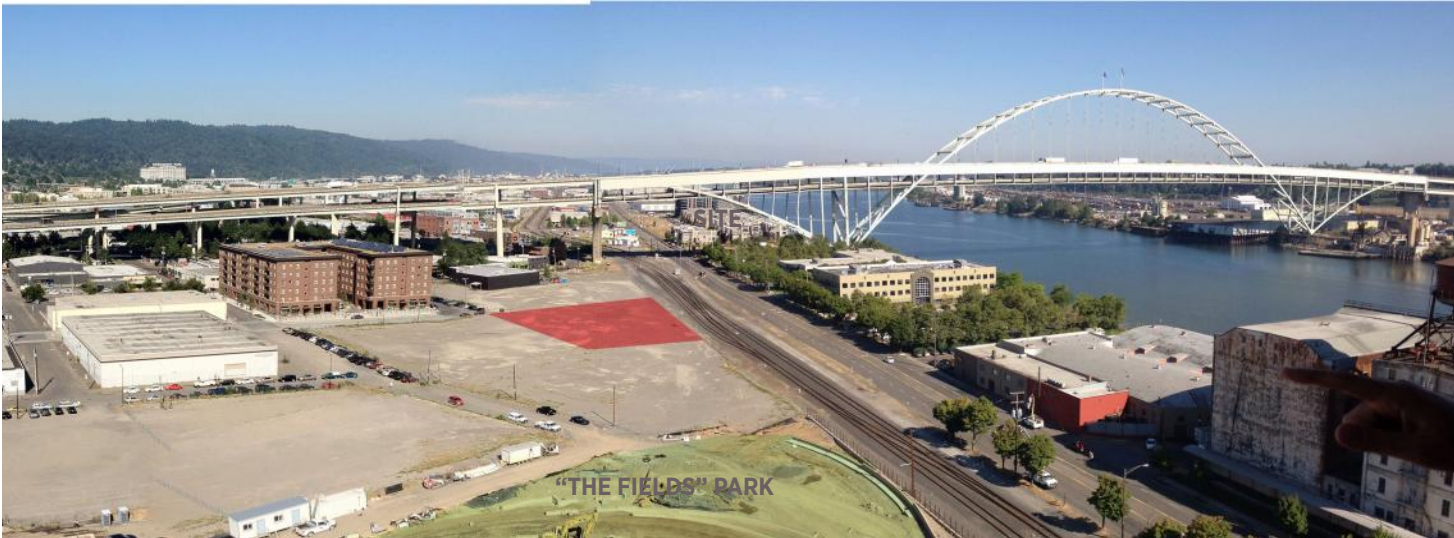
20 Perspective View - Northeast Corner - November 21, Design

21 Perspective View - Northeast Corner- Proposed Design

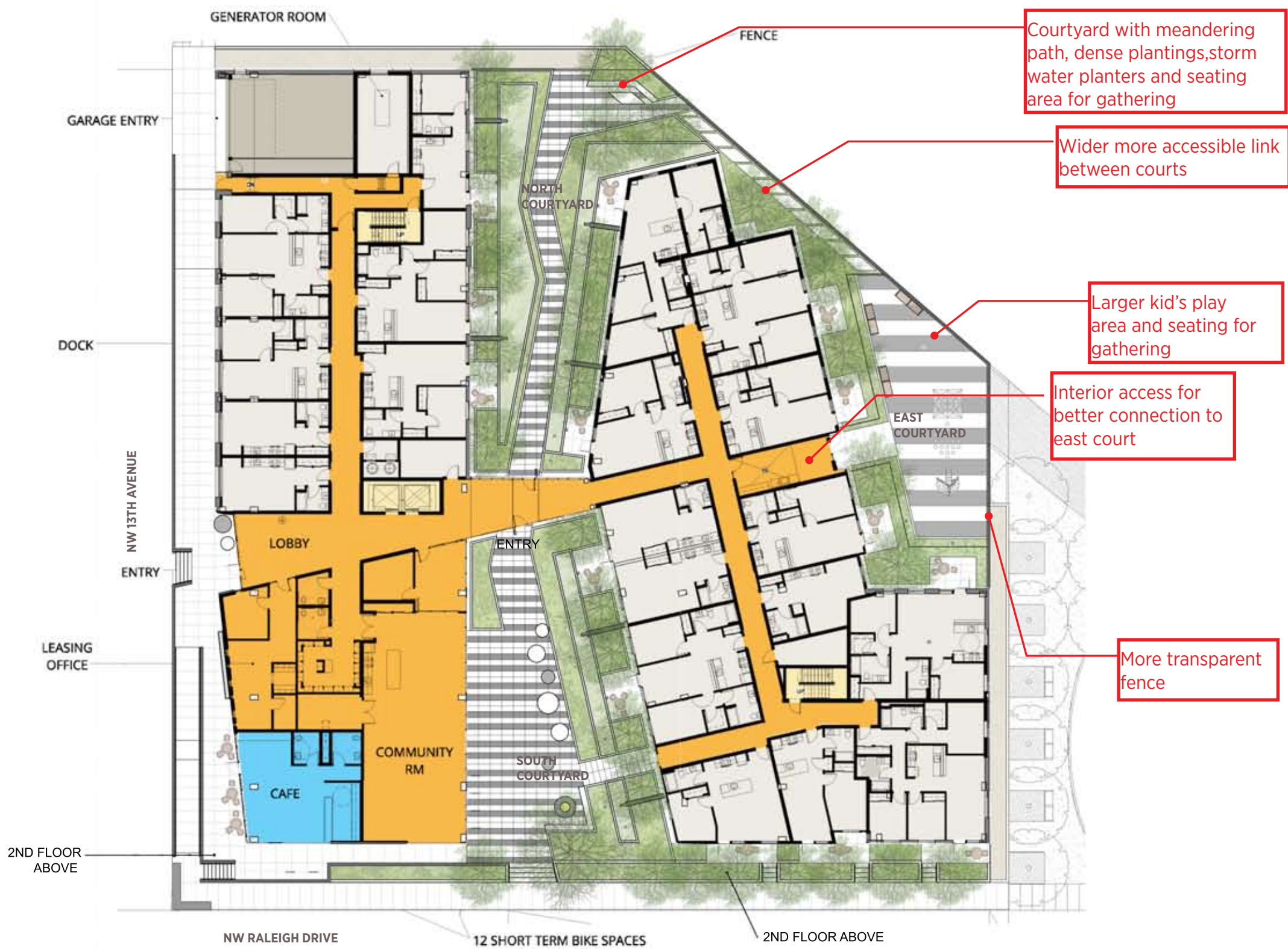
22 Perspective View - Northwest Corner- Proposed Design

Project Team

- Developer
BRIDGE Housing Corporation
- Architect
Ankrom Moisan Architects
- Landscape
2.ink Studio
- Civil Engineering
MGH Associates
- Lighting Design
Biella Lighting Design

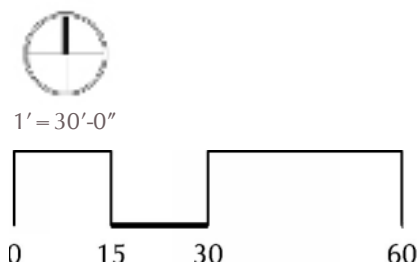






Courtyards

- The south courtyard is similar to the previous submittal. The large storm-water planter adjacent to the west building has been removed
- The north courtyard has been changed to be dense with storm water planters and vegetation. The hard surface is a meandering path that links around to the east yard
- The east yard has been changed to be a kid's play area. This is linked to the building interior with the addition of a laundry/lounge.
- The fence around the NE corner of the property has been changed to be a more transparent metal fence
- The saffron band has been removed from the Raleigh façade.









Awning helps enhance pedestrian scale





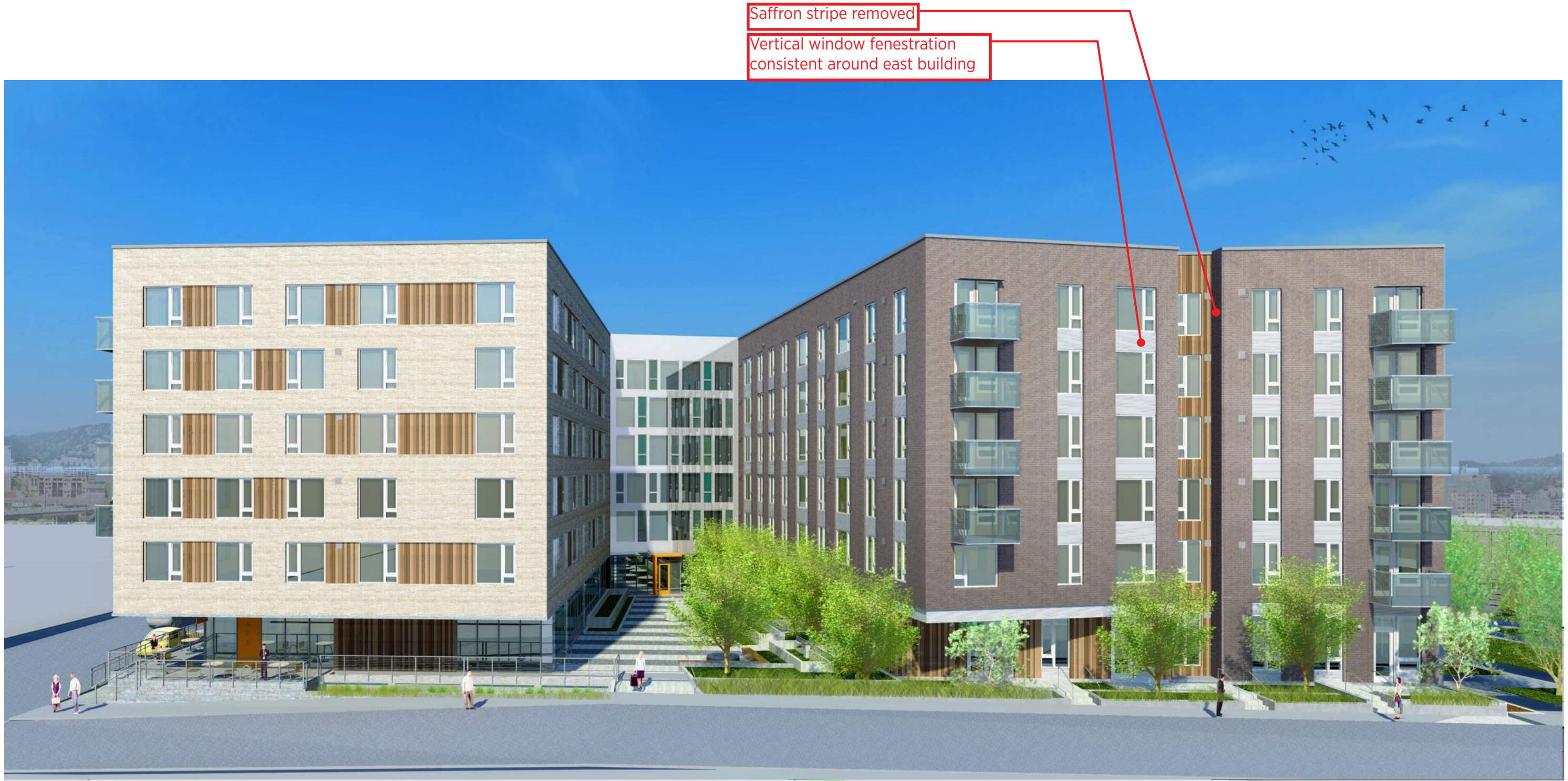




Coherent vertical articulation

Saffron Stripe confusing because of association with entries.















More articulation at the
ground floor







Ankrom Moisan Architects, Inc.
 ARCHITECTURE INTERIORS URBAN DESIGN BRANDING
 ankrommoisan.com

6720 SW Macadam Ave / Suite 100
 Portland, OR 97219
 503.245.7100

117 S Main St / Suite 400
 Seattle, WA 98104
 206.576.1600

The Abigail Family Housing / Portland, Oregon

