

Creating a Bird-safe City: Bird-friendly Building Design and Lights Out



Resource Guide for Bird-friendly Building Design

PORTLAND, OREGON

FIRST EDITION
JULY, 2012





Up to 1 billion birds die annually in the US as a result of window strikes

37034



Fatal Light Awareness Program, Toronto

KENNETH HERDY 2009

BirdSafe Portland: dawn surveys

2009, fall pilot

2010-2011, 4 seasons

- 21 buildings
- 40-65 birds/season
- 36 native species documented
- 83 native species documented in WCC;
 - 200-300 strike intakes & calls/year





BirdSafe Species (36)

- Anna's Hummingbird
- Bewick's Wren
- Black-capped Chickadee
- Black-throated Gray Warbler
- Cedar Waxwing
- Cooper's Hawk
- Common Yellowthroat
- Dark-eyed Junco
- Fox Sparrow
- Golden-crowned Kinglet
- Golden-crowned Sparrow
- Hammond's Flycatcher
- Hairy Woodpecker
- Hermit Thrush
- Lesser Goldfinch
- Lincoln's Sparrow
- MacGillivray's Warbler
- Mourning Dove
- Orange-crowned Warbler
- Pileated Woodpecker
- Pacific-Slope Flycatcher
- Red-breasted Nuthatch
- Red-breasted Sapsucker
- Rufous Hummingbird
- Savannah Sparrow
- Song Sparrow
- Spotted Towhee
- Swainson's Thrush
- Townsend's Warbler
- Varied Thrush
- Warbling Vireo
- Western Tanager
- White-crowned Sparrow
- Willow Flycatcher
- Wilson's Warbler
- Yellow Warbler

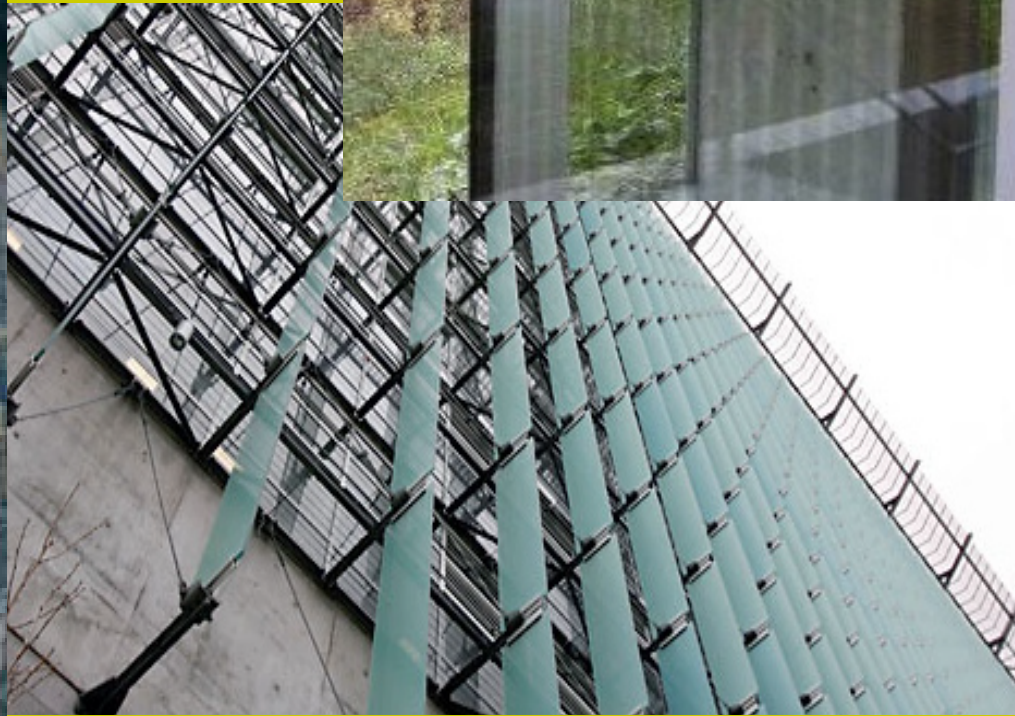




Transparency & reflections create habitat mirages

Interrupt reflections & treat transparency

- UV-patterned glass
- Etched, fritted, translucent, screenprinted or frosted glass
- Exterior screens, shades, grilles



Synergies

- Reducing solar heat gain
- Branding
- Carrying aesthetics
- Creating privacy
- Activating storefronts
- Reducing vandalism





Bird-friendly Municipalities

- NYC, **voluntary** (2007)
- Cook County, IL **mandatory** (2008)
- MN, **mandatory** for state buildings (2010)
- Toronto, **mandatory** (2011)
- San Francisco, **voluntary/mandatory** (2011)
- **ABC**, universalized template (2011)
- **Portland, voluntary Resource Guide** (July 2012)



Lights Out!

Reducing unnecessary overnight lighting

- Shields fixtures above 90 degrees
- Eliminate uplighting & spotlights
- Minimize light spill
- Use auto controls: motion sensors, photo sensors, timers

*Lights Out programs save energy, save money,
reduce ecological light pollution
& preserve the night sky.*





Lights Out Programs

Ann Arbor

Baltimore

Boston

Borrego Springs

Columbus

Charlotte

Chicago

Denver

Detroit

Flagstaff

Houston

Indianapolis

Jackson, Michigan

Milwaukee

Washington D.C.

Minneapolis

Nashville

New York City

Portland

St. Paul

San Francisco

Toronto

New York City