



**City of Portland, Oregon**  
**Bureau of Development Services**  
**Land Use Services**

FROM CONCEPT TO CONSTRUCTION

Amanda Fritz, Commissioner  
Paul L. Scarlett, Director  
Phone: (503) 823-7300  
Fax: (503) 823-5630  
TTY: (503) 823-6868  
[www.portlandoregon.gov/bds](http://www.portlandoregon.gov/bds)

**FINAL FINDINGS AND DECISION BY THE DESIGN**  
**COMMISSION RENDERED ON September 19, 2013**

**CASE FILE NUMBER: LU 13-165620 DZ**  
**PC # 13-139295**

**US Bancorp Tower Renovations**

**BUREAU OF DEVELOPMENT SERVICES STAFF:** Chris Caruso 503-823-5747 /  
[Chris.Caruso@portlandoregon.gov](mailto:Chris.Caruso@portlandoregon.gov)

**GENERAL INFORMATION**

**Applicant:** Kent Pottebaum/GBD Architects Inc.  
1120 NW Couch St., Ste 300/Portland, OR 97209

**Owner:** 555 SW Oak LLC / c/o LaSalle Investment Management Inc.  
200 E Randolph Dr./Chicago, Il 60601

**Owner/Contact:** Brian Pearce/Unico Properties LLC  
111 SW Fifth Avenue, Suite 975/Portland, OR 97204

**Site Address:** 555 SW OAK ST

**Legal Description:** GENERAL COMMON ELEMENTS, ONE ELEVEN TOWER  
CONDOMINIUM; LOT 1, ONE ELEVEN TOWER CONDOMINIUM; LOT  
2, ONE ELEVEN TOWER CONDOMINIUM

**Tax Account No.:** R628200010, R628200030, R628200060, R140471, R140472,  
R496362, R496363, R496358

**State ID No.:** 1N1E34CD 80000, 1N1E34CD 80001, 1N1E34CD 80002, 1N1E34CD  
01300

**Quarter Section:** 3029

**Neighborhood:** Portland Downtown, contact Jennifer Geske at 503-750-9843.

**District Coalition:** Neighbors West/Northwest, contact Mark Sieber at 503-823-4212.

**Plan District:** Central City - Downtown

**Zoning:** CXd – Central Commercial with design overlay

**Case Type:** DZ – Design Review

**Procedure:** Type III, with a public hearing before the Design Commission. The  
decision of the Design Commission can be appealed to City Council.

**Proposal:**

The applicant seeks design review approval for exterior alterations to the US Bancorp Tower which includes: new dark anodized bronze and clear glass curtainwall and entry doors in the three south façade bays; new soffit extensions above the three south bays with two plaster ceilings, one glass ceiling, and recessed can lights; replacement of the plaza pavers with two colors of pavers; new plaza landscape planters with integral seating and lighting; new ADA accessible entry at the NW 5<sup>th</sup> Ave main link doors; infilling the breezeway space between the building and the southeast stair tower with new walls and windows; and one area of new infill

storefront along SW 5<sup>th</sup> Avenue. Ten parking spaces will be made available as Growth Parking for the newly created floor area. The spaces will be located in the nearby parking garage and will come out of the 171 spaces in the garage that are currently unassigned.

Design review is required for exterior alterations to existing buildings in the Central City Plan District.

**Relevant Approval Criteria:**

In order to be approved, this proposal must comply with the approval criteria of Title 33. The relevant approval criteria are:

- 33.420 Design Overlay
- 33.825 Design Review
- Central City Fundamental Design Guidelines

**ANALYSIS**

**Site and Vicinity:** The building is located on a multi-block lot that was developed in the 1970's & 1980's starting with the vacation of SW Ankeny Street in 1971 for the construction of the bank plaza building, underground parking, and off-street parking in 1974. The bank tower was built later and opened in 1983 along with the associated parking garage across SW 5<sup>th</sup> Avenue on SW Pine Street. The building complex, known affectionately as Big Pink for its rose colored granite cladding and colored glass curtainwall, has become an iconic feature of the Portland skyline and marks the northern entry point into the downtown core. The building complex was designed to align with both the orthogonal street grid to the north and the shifted street grid south of Burnside. Many elements of the building's original interior design reflected the intersection of the two street grids through the use of trapezoidal finish elements such as pavers, ceiling tiles, and wall panels. Much of this was removed during a remodel done in the 1980's. The connection between the tower and plaza buildings features an angled interior "street" that follows the SW Ankeny Street alignment between SW 5<sup>th</sup> and SW 6<sup>th</sup> Avenues. The site is surrounded by a few surface parking lots, several structured parking garages, and a number of commercial buildings from many eras and designed in a variety of styles. Northern portions of the SW 5<sup>th</sup>, SW 6<sup>th</sup> and the entire W Burnside facade are located in the Broadway Bright Lights District.

According to the City's *Transportation System Plan*, SW 5<sup>th</sup> and 6<sup>th</sup> Avenues are designated Community Main Streets, Major Transit Priority Streets/Regional Transitways, Regional City Transit/Pedestrian Streets, and Local Service Bikeways. West Burnside is designated a Regional Main Street, Major Transit Priority Street, City Walkway, and Local Service Bikeway. SW Oak Street is designated a Traffic Access Street, Local Service Walkway and Local Service Bikeway. The site is located in the Central City Pedestrian District and has the MAX Light Rail and multiple frequent service bus lines running along both SW 5<sup>th</sup> and SW 6<sup>th</sup> Avenues, all of which stop at the transit station located in the middle of the block on both streets.

**Zoning:** The Central Commercial (CX) zone is intended to provide for commercial development within Portland's most urban and intense areas. A broad range of uses is allowed to reflect Portland's role as a commercial, cultural and governmental center. Development is intended to be very intense with high building coverage, large buildings, and buildings placed close together. Development is intended to be pedestrian-oriented with a strong emphasis on a safe and attractive streetscape.

The "d" overlay promotes the conservation and enhancement of areas of the City with special historic, architectural or cultural value. New development and exterior modifications to existing development are subject to design review. This is achieved through the creation of design districts and applying the Design Overlay Zone as part of community planning projects, development of design guidelines for each district, and by requiring design review. In addition,

design review ensures that certain types of infill development will be compatible with the neighborhood and enhance the area.

The Central City Plan District implements the Central City Plan and other plans applicable to the Central City area. These other plans include the Downtown Plan, the River District Plan, the University District Plan, and the Central City Transportation management Plan. The Central City plan district implements portions of these plans by adding code provisions which address special circumstances existing in the Central City area. The site is within the Downtown Subdistrict of this plan district.

The Design Overlay Zone [d] promotes the conservation, enhancement, and continued vitality of areas of the City with special scenic, architectural, or cultural value. This is achieved through the creation of design districts and applying the Design Overlay Zone as part of community planning projects, development of design guidelines for each district, and by requiring design review. In addition, design review ensures that certain types of infill development will be compatible with the neighborhood and enhance the area.

**Land Use History:** City records indicate prior land use reviews at the site that include the following:

1. CU 035-72 – Conditional Use approval for a 7 story structure “Plaza Building” with banking operations and plaza level retail shops with underground parking and off-street parking for 260 cars with a condition that public access be granted during reasonable hours from SW 5th to SW 6th along SW Ankeny (vacated) to allow for Ankeny Mall continuity.
2. DZ 3-81/CU 26-81 – Design review and Conditional Use approval for a 608 space parking garage to the east on SW Pine and 4<sup>th</sup>.
3. DZ 26-81 – Design review approval of final materials for the Bancorp Tower.
4. CU 39-82 – Withdrawn request for a 901 space parking garage to the east.
5. DZ 15-83/CU 017-83 – Design review and Conditional Use approval for a helistop on the Bancorp Tower.
6. CU 056-83 – Conditional Use approval for a drive-in banking facility in the parking garage to the east
7. DZ 76-84 – Design review approval for a mechanical penthouse on the Bancorp Tower.
8. DZ 77-84 – Design review approval for aluminum storefronts in existing openings and signage on the parking garage building to the east.
9. DZ 164-85 – Design review approval for café signage on the Plaza building.
10. DZ 1-87/CU 7-87 – Design review and Conditional Use approval for two microwave dishes on top of the Bancorp Tower.
11. DZ 091-90 – Design review approval for revolving door modifications to the complex.
12. LUR 92-00743 – Design review approval for windows on the 7th floor of the Plaza.
13. LUR 93-00063 – Design review approval for seismic upgrades to the complex.
14. LU 02-145506 – Design review approval for renovations to Oak Street outdoor plaza with an amphitheater and freestanding canopies. This was never constructed and has since expired.
15. LU 05-159171 DZ – Design review approval of a new entry gate on SW 5<sup>th</sup> Ave from SW Pine to the commercial parking.

**Agency Review:** A “Notice of proposal in Your Neighborhood” was mailed **August 13, 2013**.

The following Bureaus have responded with no issue or concerns:

- Bureau of Parks-Forestry Division
- Water Bureau (Exhibit E-1)
- Fire Bureau (Exhibit E-2)
- Site Development Section of BDS (Exhibit E-3)
- Life Safety Review Section of BDS (Exhibit E-4)
- Bureau of Environmental Services (Exhibit E-5)
- Bureau of Transportation Engineering (Exhibit E-6)

The Portland Commission on Disability responded with the following comment: Please see Exhibit E-7 for additional details.

*Expressing concern regarding the building alterations that may affect accessibility of the site.  
Would like the existing accessible route retained at the main eastern entrance to the tower.*

**Neighborhood Review:** A Notice of Proposal in Your Neighborhood was mailed on **August 13, 2013**.

Four written responses have been received from either the Neighborhood Association or notified property owners in response to the proposal.

1. Doug Klotz, August 14, 2013 – Would like to know how the public access through the building along the vacated Ankeny Street alignment will be maintained and does this include accessibility for disabled persons? It appears that street access to the current ADA ramp is being closed off with storefront and the remaining Ankeny easement access from SW 5<sup>th</sup> Avenue has a set of stairs that will create a barrier for some people. Would like to see a ramp added to the SW 5<sup>th</sup> entry stairs so every person can access this historic street alignment through the building with ease.
2. Doug Klotz, August 28, 2013 - Would like the interior Ankeny alignment fully ADA accessible and to continue to carry the public access Condition of Approval issued in 1972.
3. Douglas L. Oblatz, Portland Mall Management Inc, September 3, 2013 - Fully supports the proposal.
4. Doug Klotz, September 3, 2013 - Supports the proposed new interior ADA ramp and continues to ask the Commission to re-apply the 1972 public access Condition to the site.

Staff Response: *The original vacated SW Ankeny Mall connection was an open-air sidewalk along the north façade of the newly built 7-story Plaza Building. The future Bancorp Tower site was a landscaped plaza which, along with the Ankeny passageway, was all enclosed when the Tower was built. Staff has reviewed microfiche sheets and archived paper files, has asked PBOT to review their records, and has asked the building owner to review the title. No one has found any record of an Easement or Condition attached to the current building complex that required the vacated Ankeny alignment to remain open as public access space after the Bancorp Tower was completed. Per Portland Zoning Code section 33.700.110, any Conditions of Approval administered prior to 1981 no longer apply to sites that were not part of a Land Division (which this site was not). Therefore the Condition of Approval from 1972, for the Ankeny alignment to be open to the public during reasonable hours, no longer applies to this site.*

*Staff has spoken with members of other City agencies, including the BDS Building Permit review group, the Portland Office of Equity and Human Rights, and the Portland Commission on Disability, about possible entry options. After the original Staff Report was released, the architect designed a new interior ADA ramp at the northerly main link entry off of SW 5<sup>th</sup> Avenue. The new design has been well received by all interested parties as an appropriate response to accessibility issues. The other existing ADA entry south of the parking garage access drive will be improved with a new interior ramp as well.*

## **DEVELOPMENT STANDARDS**

### **CX Base Zone Development Standards (33.130)**

The CX zone is intended to provide for commercial development within Portland's most urbane and intense areas. A broad range of uses is allowed to reflect Portland's role as a commercial, cultural and governmental center. Development is intended to be very intense with high building coverage, large buildings, and buildings placed close together. Development is intended to be pedestrian-oriented with a strong emphasis on a safe and attractive streetscape.

### **Central City Plan District Development Standards (33.510)**

The Central City plan district implements the Central City Plan and other plans applicable to the Central City area. These other plans include the Downtown Plan, the River District Plan, the University District Plan, and the Downtown Parking and Circulation Policy. The Central City plan district implements portions of these plans by adding code provisions which address special circumstances existing in the Central City area.

*Note: The proposal does not have to meet all development standards in order to be approved during this process, but will have to meet those standards (or appropriate adjustments/modifications be approved) before a building permit can be issued.*

Central Residential Zone Primary Uses (Table 130-1)

*Development Standard*

Retail Sales and Service and Office uses are allowed by right. These activities currently occur in the building and will continue after this proposal is constructed. This standard is met.

Floor Area Ratios (33.510.200 & Map 510-2)

*Development Standard*

Maximum FAR 15:1 allowed, Bonus FAR 3:1

*Proposal*

- Total FAR will increase by 6,125 SF for a total FAR of 12.8:1. This standard is met.

Maximum Height (Table 130-3, 33.510.205 & Map 510-3)

*Development Standard*

Maximum height 460 feet. No bonus height available.

*Proposal*

- There is no proposal to increase the building's height. This standard is met.

Minimum and Maximum Setbacks (Table 130-3 & 33.130.215)

*Development Standard*

The maximum building setback is 10 feet for 100% of the ground-level street-facing facades along a street in a Pedestrian District (applies to all 4 frontages).

*Proposal*

- The street-facing building wall is within the maximum allowed setback on the SW 5<sup>th</sup>, SW 6<sup>th</sup>, and W Burnside frontages and is coming closer to conformance on the SW Oak Street frontage with the alterations to the three glazed bays. This standard is met.

Building Coverage (Table 130-3)

*Development Standard*

No limit.

*Proposal*

- The building can occupy 100% of the site. The proposed alterations do create more site coverage but not more than 100%. This standard is met.

Minimum Landscaped Area (Table 130-3)

*Development Standard*

None.

*Proposal*

- New landscape planters are proposed in the plaza but are not required. This standard is met.

Ground Floor Windows (33.130.230.B.2)

*Development Standard*

In the CX zone, all exterior walls on the ground level which face a street lot line, sidewalk, plaza, or other public open space or right-of-way must meet the general window standard in Paragraph 3.

General Standard. The windows must be at least 50 percent of the length and 25 percent of the ground level wall area. Ground level wall areas include all exterior wall areas up to 9 feet above the finished grade. The requirement does not apply to the walls of residential units, and does not apply to the walls of parking structures when set back at least 5 feet and landscaped to at least the L2 standard.

*Proposal*

- Proposed ground floor windows on the three affected frontages will continue to meet the standard.

Ground Floor Active Uses (33.510.225 & Map 510-7)

*Development Standard*

The ground floor active use standards are intended to reinforce the continuity of pedestrian-active ground-level building uses. The standards are also to help maintain a healthy urban district through the interrelationship of ground floor occupancy and street-level accessible public uses and activities. Active uses include but are not limited to: lobbies, retail, residential, commercial, and office. The standard must be met along at least 50% of the ground floor of walls that front onto a sidewalk, plaza, or other public open space. The distance from the finished floor to the underside of structure must be at least 12 feet. The area must be at least 25 feet deep measured from the street-facing façade and must include windows or doors, or be structurally designed so doors and windows can be added in the future.

*Proposal*

- Ground floor active use areas will continue to be provided on the three affected frontages. This standard is met.

Screening (33.130.235)

*Development Standard*

All exterior garbage and recycling areas must be screened from the street and any adjacent properties. Mechanical equipment on the roof must be screened if within 50 feet of an R zone.

*Proposal*

- No changes are proposed to the current garbage and recycling procedures. This standard is met.
- No changes are proposed to the existing mechanical system. This standard is met.

Pedestrian Standards (33.130.240)

*Development Standard*

These pedestrian standards implement the State Transportation Planning Rule. Under the pedestrian standards, the site must contain a pedestrian circulation system connecting all adjacent streets to the main entrance and provide connections to other areas of the site.

*Proposal*

- The building will continue to provide direct access to all entrances via the public sidewalk and the area between the building and the street lot line will remain hardscaped for use by pedestrians. This standard is met.

Nonconforming Upgrades (33.258.070)

*Development Standard*

Upgrades to nonconforming development are required when the value of the proposed alterations on the site is more than \$137,650.00. Up to 10% of the project cost must be spent toward bringing the site into conformance with the zoning code.

*Proposal*

- The site is already compliant with the Portland Zoning Code and is not required to do any nonconforming upgrades. This standard is met.

Parking (33.266 & 33.510.263)

*Development Standard*

There is no required parking in the CX zone. More than 20 spaces in a structure is allowed. Maximum Retail Parking = 1 per 1,000 SF. Maximum Office Parking = 0.7 per 1,000 SF

*Proposal*

- Parking for the site is already provided in a below-grade garage as well as within a separate parking garage across SW 5<sup>th</sup> Avenue. Ten new Growth Parking spaces will be created in the separate parking garage. These will be taken from the previously constructed 171 spaces that are available but currently roped off for future use such as this. The project is adding 3,034 nsf of Retail area for 3 new parking spaces and 10,820 nsf of Office area for 8 new parking spaces. This allows the project to acquire up to 10 additional parking spaces. This standard is met.

Bicycle Parking (33.266.210 & Table 266-6)

*Development Standard*

The project consists of 37,951 NSF of Retail Sales and Service space and 866,175 NSF of Office space. Bicycle Parking requirements are:

*Proposal*

- |                                  |          |              |
|----------------------------------|----------|--------------|
| ▪ Retail Sales Short-Term Spaces | 8 req'd  | 10 provided  |
| ▪ Retail Sales Long-Term Spaces  | 4 req'd  | 7 provided   |
| ▪ Office Short-Term Spaces       | 22 req'd | 23 provided  |
| ▪ Office Long-Term Spaces        | 87 req'd | 110 provided |

This standard is met.

Loading Spaces (33.266.310 & Map 510-9)

*Development Standard*

No loading spaces are required.

*Proposal*

- No new loading spaces are being provided. This standard is met.

Signs (33.130.295 & Title 32) No signs are proposed for approval in this review.

Street Trees (33.130.300) Street Trees will be provided as required by the City Forester.

**ZONING CODE APPROVAL CRITERIA**

**DESIGN REVIEW (33.825)**

**Section 33.825.010 Purpose of Design Review**

Design review ensures that development conserves and enhances the recognized special design values of a site or area. Design review is used to ensure the conservation, enhancement, and continued vitality of the identified scenic, architectural, and cultural values of each design district or area. Design review ensures that certain types of infill development will be compatible with the neighborhood and enhance the area. Design review is also used in certain cases to review public and private projects to ensure that they are of a high design quality.

**Section 33.825.055 Design Review Approval Criteria**

A design review application will be approved if the review body finds the applicant to have shown that the proposal complies with the design guidelines for the area.

**Findings:** The site is designated with design overlay zoning (d), therefore the proposal requires Design Review approval. Because of the site's location, the applicable design guidelines are the Central City Fundamental Design Guidelines.

**Central City Fundamental Design Guidelines**

These guidelines provide the constitutional framework for all design review areas in the Central City.

The Central City Fundamental Design Guidelines and the River District Design Guidelines focus on four general categories. **(A) Portland Personality**, addresses design issues and elements that reinforce and enhance Portland's character. **(B) Pedestrian Emphasis**, addresses design issues and elements that contribute to a successful pedestrian environment. **(C) Project Design**, addresses specific building characteristics and their relationships to the public environment. **(D) Special Areas**, provides design guidelines for the four special areas of the Central City.

### **Central City Plan Design Goals**

This set of goals are those developed to guide development throughout the Central City. They apply within the River District as well as to the other seven Central City policy areas. The nine goals for design review within the Central City are as follows:

1. Encourage urban design excellence in the Central City;
2. Integrate urban design and preservation of our heritage into the development process;
3. Enhance the character of the Central City's districts;
4. Promote the development of diversity and areas of special character within the Central City;
5. Establish an urban design relationship between the Central City's districts and the Central City as a whole;
6. Provide for a pleasant, rich and diverse pedestrian experience for pedestrians;
7. Provide for the humanization of the Central City through promotion of the arts;
8. Assist in creating a 24-hour Central City which is safe, humane and prosperous;
9. Ensure that new development is at a human scale and that it relates to the scale and desired character of its setting and the Central City as a whole.

*Staff has considered all guidelines and has addressed only those guidelines considered applicable to this project.*

**A2. Emphasize Portland Themes.** When provided, integrate Portland-related themes with the development's overall design concept.

**A3. Respect the Portland Block Structures.** Maintain and extend the traditional 200-foot block pattern to preserve the Central City's ratio of open space to built space. Where superblocks exist, locate public and/or private rights-of-way in a manner that reflects the 200-foot block pattern, and include landscaping and seating to enhance the pedestrian environment.

**Findings for A2 & A3:** The project continues the theme of wide public spaces around transit stops by retaining the open south plaza as a pedestrian thoroughway and gathering place for people moving between MAX and bus transit stops. The existing brick sidewalks that designate SW 5<sup>th</sup> and SW 6<sup>th</sup> Avenues as part of the transit mall will be retained and will be further distinguished by the use of distinctive new pavers in the south plaza and SW Oak Street sidewalk, all of which is above an existing parking structure. Further delineation of the traditional block pattern is provided at the southern portion of the site by locating a line of landscape planters along the property's edge. These planters will also enhance the pedestrian environment around the south plaza by providing a more human scale with seating and greenery in what is now a rather barren urban space. *These guidelines are therefore met.*

**A4. Use Unifying Elements.** Integrate unifying elements and/or develop new features that help unify and connect individual buildings and different areas.

**A5. Enhance, Embellish, and Identify Areas.** Enhance an area by reflecting the local character within the right-of-way. Embellish an area by integrating elements in new development that build on the area's character. Identify an area's special features or qualities by integrating them into new development.



**Findings for A4 & A5:** This area of the Downtown Core is a dense commercial corridor featuring an assortment of building types from early in Portland's history to the modern era. The use of high quality materials such as granite panels and aluminum curtainwall, the consistent architectural composition of matching existing and new materials, and new plaza furnishings, all contribute to the enhancement and identification of the area. The ground floor of the building will continue to have clear glazed storefront windows and a number of entry doors which will activate the pedestrian experience along the streets by providing views and access into a variety of different spaces. Existing brick sidewalks will remain along SW 5<sup>th</sup> and 6<sup>th</sup> Avenues, marking these streets as special areas by linking them, through the use of consistent materials, with the north-south transit mall. The small paver idea of the brick sidewalks is continued across the SW Oak Street sidewalk, which sits on an underground parking structure, by the use of two colors of angled pavers that continue through the plaza. This creates a clear identity for the plaza while still providing the smaller scale of a textured sidewalk seen in the area. The sidewalk along SW Oak Street will remain at its current widths and will have space for other urban elements such as trash receptacles and street lights. All of the above elements contribute to unify the various components of this project with its urban surroundings. *These guidelines are therefore met.*

**A6. Reuse/Rehabilitate/Restore Buildings.** Where practical, reuse, rehabilitate, and restore buildings and/or building elements.

**Findings:** The proposed renovation and additions to the US Bancorp Tower of a reconfigured entry storefront, realigned south façade bays, and in-filled breezeway allows for the creation of new floor area inside the building. This will in turn allow for continued occupation by new and existing tenants. Landscape planters in the south plaza will be constructed from stacks of the pink granite that is being removed as part of the overall interior and exterior building renovations, providing a way to responsibly reuse and recycle original materials. Additional existing granite panels will be reused on some of the new exterior walls. *This guideline is therefore met.*

**A7. Establish and Maintain a Sense of Urban Enclosure.** Define public rights-of-way by creating and maintaining a sense of urban enclosure.

**B1. Reinforce and Enhance the Pedestrian System.** Maintain a convenient access route for pedestrian travel where a public right-of-way exists or has existed. Develop and define the different zones of a sidewalk: building frontage zone, street furniture zone, movement zone, and the curb. Develop pedestrian access routes to supplement the public right-of-way system through superblocks or other large blocks.

**B3. Bridge Pedestrian Obstacles.** Bridge across barriers and obstacles to pedestrian movement by connecting the pedestrian system with innovative, well-marked crossings and consistent sidewalk designs.

**B7. Integrate Barrier-Free Design.** Integrate access systems for all people with the building's overall design concept.

**Findings for A7, B1, B3 & B7:** The existing building walls will remain in place, tight to the street lot line along SW 5<sup>th</sup> and 6<sup>th</sup> Avenues, retaining the sense of urban enclosure already present on these blocks. The reconfigured storefront on SW 5<sup>th</sup> Avenue will bring a deeply recessed wall plane out closer to the street edge, creating a more continuous urban edge at this façade. The new orthogonal south bay walls and extended second floor soffits will bring other deeply recessed portions of the building in closer to the street edge thus creating a more clearly defined edge to the building. The street furniture zone will continue to have street trees and transit stop furnishings were required. Landscape planters along the south property line will further delineate this southern edge by adding a series of low seat walls that help define the beginning of the plaza. The planters will be angled and located in such a way as to still allow for continued movement of pedestrians

across the plaza to the connecting streets, sidewalks, and transit stops. The existing public sidewalks that run along all four sides of the site will be maintained and any damaged or missing areas will be replaced to City standards.

Condition of Approval B requires that the current SW 5th Avenue ADA-compliant ramp be replaced with an ADA-compliant door and interior ramp located at the main link entry. The other existing ADA entry south of the underground parking access driveway will be improved with a new interior ramp as well, thus creating two ADA access points along SW 5th Avenue. Having these two ADA entries allows disabled persons to access the building from the bus stop, the MAX stop, and from parking areas across the street without requiring them to cross the underground parking access driveway, making the area safer for pedestrians and reducing potential vehicle-pedestrian conflicts. The remaining existing and new public entries into the building will comply with the requirements of the Americans With Disabilities Act (ADA), creating barrier-free access to the building interior from numerous points around the site. *With Condition of Approval B, these guidelines are therefore met.*

**A8. Contribute to a Vibrant Streetscape.** Integrate building setbacks with adjacent sidewalks to increase the space for potential public use. Develop visual and physical connections into buildings' active interior spaces from adjacent sidewalks. Use architectural elements such as atriums, grand entries and large ground-level windows to reveal important interior spaces and activities.

**C1. Enhance View Opportunities.** Orient windows, entrances, balconies and other building elements to surrounding points of interest and activity. Size and place new buildings to protect existing views and view corridors. Develop building façades that create visual connections to adjacent public spaces.

**Findings for A8 & C1:** The building's ground floor has multiple street-level entries and large areas of clear glazing around the entire building that allow views into numerous and different active areas such as lobbies, offices, and retail spaces. Two additional retail entries will be provided along the south façade, to allow for more direct interaction with people crossing through the plaza. The proposal will retain existing building views in the renovated areas by installing a dark bronze anodized and clear glazed curtainwall system that matches the rest of the building. While there are no adjacent publicly owned spaces such as parks or trails, the orientation of the main retail spaces and lobby entrances along SW 5th and 6th Avenues to the sidewalks, and other entries out toward the plaza, enhances visual connections to the adjacent transit mall stops and to the new plaza features. *These guidelines are therefore met.*

**B4. Provide Stopping and Viewing Places.** Provide safe, comfortable places where people can stop, view, socialize and rest. Ensure that these places do not conflict with other sidewalk uses.

**B6. Develop Weather Protection.** Develop integrated weather protection systems at the sidewalk-level of buildings to mitigate the effects of rain, wind, glare, shadow, reflection, and sunlight on the pedestrian environment.

**Findings for B4 & B6:** The pedestrian realm is enhanced by the renovation of the south plaza with new landscape planters and deep integral seating. The planter seating creates new places for people to stop, socialize, and rest along the edges of the site as well as inside the plaza. These new deep linear seating is arranged to not conflict with pedestrians using the adjacent sidewalks or the plaza pathways by having spaces between the planters and holding them to the street lot lines. The plantings and design materials will add new visual interest as well as mitigate for the effects of glare, wind, reflection, and sunlight by providing an interesting mix of plant material, including trees, in what is now a rather barren area.

Existing building soffits along SW 5<sup>th</sup>, SW 6<sup>th</sup> Ave, and W Burnside Street will remain and will continue to provide additional stopping and resting places that are protected from weather. The three proposed south bay soffits provide new areas of weather protection by pulling the first floor ceiling line out to the face of the building. These new soffits will each extend beyond the proposed south entry doors, providing integrated, covered areas for people entering and exiting the building. Locating the soffits at the ceiling of the first floor brings them down from their current location at the top of the third floor, making these new soffits more functional for actual weather protection. *These guidelines are therefore met.*

**C2. Promote Quality and Permanence in Development.** Use design principles and building materials that promote quality and permanence.

**C3. Respect Architectural Integrity.** Respect the original character of an existing building when modifying its exterior. Develop vertical and horizontal additions that are compatible with the existing building, to enhance the overall proposal's architectural integrity.

**C5. Design for Coherency.** Integrate the different building and design elements including, but not limited to, construction materials, roofs, entrances, as well as window, door, sign, and lighting systems, to achieve a coherent composition.

**Findings for C2, C3 & C5:** Proposed building materials include new and reused granite, wood planter bench seating, glass and aluminum framed curtainwall and storefront systems, and two colors of masonry pavers. All of these materials are of the highest quality and are already present on the building and the site. They are used throughout urban environments and are proven to stand the test of time, and using them on this site will continue the existing building's sense of permanence. The original character of the building is respected by the location of the storefront and curtainwall systems within existing structural bays, installed in a manner that does not cover or interfere with the established pattern of columns and windows. The three new south entry soffits will match the height and some of the materials of other soffits around the building, and hearken back to an original design option put forth by architect Pietro Belluschi. The plaza pavers and reclaimed granite planters will define new seating and gathering spaces in the south plaza while also allowing for open spaces between the building and SW Oak Street for use by the general public.

All of the granite wall panels, curtainwall and storefront proposed within structural bays, as well as within the southeast corner breezeway, will match the existing building in material, scale, and color, allowing these areas to seamlessly blend in with the building's architecture. While the two flanking new southern soffit extensions will be finished with plaster ceilings to match the rest of the building soffits, the central soffit will have sloped tempered glass and dark bronze support beams still wrapped on the outside with granite panels, which will help distinguish this entry as the main south entry while still holding to the overall building aesthetic of window separate by granite bands. The plaza paver pattern and some of the planter walls will be angled to follow the original angle of the south façade, thereby enhancing the plaza's visual relationship with the building's architecture. The proposed renovations and additions to the US Bancorp tower and plaza building work together to form a cohesive composition of regular forms that replicate the existing pattern of solids and voids already present around the building. *These guidelines are therefore met.*

**C6. Develop Transitions between Buildings and Public Spaces.** Develop transitions between private development and public open space. Use site design features such as movement zones, landscape element, gathering places, and seating opportunities to develop transition areas where private development directly abuts a dedicated public open space.

**Findings:** While the building is not across the street from a public park or open space, it does feature a large open plaza along SW Oak Street. This redesigned plaza will feature landscape planters with integral seating on both the inside and outside planter faces. The outside planter seating edges help define the transition space between the public sidewalks and the plaza itself. Movement zones are created through the plaza by having wide separations between planters and by having the planters be angled in such a way as to help direct pedestrians through the plaza and out onto the sidewalks to the nearby transit station stops. New gathering spaces are defined inside the plaza by the edges of the planters, the infilled breezeway, and the realigned south walls. The new pavers will extend, in an angled pattern, across the entire width and depth of the plaza. The transition between the public sidewalk and the plaza will be defined by the horizontal landscape planter walls and the vertical plant materials. *This guideline is therefore met.*

**C8. Differentiate the Sidewalk-Level of Buildings.** Differentiate the sidewalk-level of the building from the middle and top by using elements including, but not limited to, different exterior materials, awnings, signs, and large windows.

**C9. Develop Flexible Sidewalk-Level Spaces.** Develop flexible spaces at the sidewalk-level of buildings to accommodate a variety of active uses.

**Findings for C8 & C9:** The proposed renovations of the ground floor with large expanses of new clear-glazed windows allow for completely open views into active areas, as well as allowing views out onto the sidewalks from inside the building. The new glass curtainwall and storefront systems create a strong line of demarcation between the areas with more glazing on the ground and mezzanine floors, and the smaller window openings of the upper floors. This division between the base of the building and the upper floors is further delineated by the band of granite that demarcates the second floor. This runs around the entire building and will be continued on the south façade with the addition of the three new soffits above the entry doors. The spaces created behind the new storefront and curtainwall systems are flexible and can be reconfigured for other uses in the future while still retaining the multiple main public entries and the new south entries. *These guidelines are therefore met.*

**C12. Integrate Exterior Lighting.** Integrate exterior lighting and its staging or structural components with the building's overall design concept. Use exterior lighting to highlight the building's architecture, being sensitive to its impacts on the skyline at night.

**Findings:** Proposed building lighting is purposefully kept to a minimum to not impact the skyline at night, and is positioned along the street to illuminate the pedestrian realm. The recessed lights located in the new and existing soffits will all be directed down, not up, to provide sidewalk and plaza lighting, and will not adversely impact the Portland skyline. Additional site lighting is integrated below the planter bench seats. These linear fixtures will add more lighting to the plaza and the pathways through it while also providing an interesting highlight to the planters themselves. Street lights are located along the sidewalks as well as within the transit shelters to illuminate the public sidewalks and crossings. *This guideline is therefore met.*

## DEVELOPMENT STANDARDS

Unless specifically required in the approval criteria listed above, this proposal does not have to meet the development standards in order to be approved during this review process. The plans submitted for a building or zoning permit must demonstrate that all development standards of Title 33 can be met, or have received an Adjustment or Modification via a land use review prior to the approval of a building or zoning permit.

## CONCLUSIONS

The design review process exists to promote the conservation, enhancement, and continued vitality of areas of the City with special scenic, architectural, or cultural value. The overall design results in a coherent composition that is interesting to view and is both reflective and supportive of its urban environment. Building elements and site design features such as the plaza planters with integral seating, the new south facade curtainwall systems and soffits, and the infilled breezeway create an environment that enhances the pedestrian, visitor, and tenant experience. The proposal meets the applicable design guidelines and therefore warrants approval.

## DESIGN COMMISSION DECISION

It is the decision of the Design Commission to approve Design Review for exterior alterations to the US Bancorp Tower that includes:

- New dark anodized bronze and clear glass curtainwall in the three south façade bays and orienting the walls so they are parallel with SW Oak Street;
- Three new granite-banded soffits at the 1<sup>st</sup> floor ceiling of the south façade bays, two soffits with plaster ceilings and the central soffit with a sloped glass ceiling with metal beams;
- Recessed light fixtures in all new and renovated soffits;
- Replacement of the trapezoidal south plaza pavers with new rectangular masonry pavers in two sizes and two colors, in a pattern that is angled to match the adjacent granite south building walls.
- Landscape planters in the plaza with integral wood seating and light fixtures;
- Infilling the multi-story breezeway opening at the southeast building corner with exterior windows and wall materials to match the existing building;
- One area of new dark anodized metal and clear glass infill storefront along SW 5<sup>th</sup> Avenue that closes the currently ramped southern link entry;
- An ADA accessible entry at the northerly SW 5<sup>th</sup> Avenue link main entry with an interior ramp in place of a portion of the existing interior stairs; and
- Ten of the 171 currently roped off parking spaces in the parking garage across the site on SW 5<sup>th</sup> Avenue made available for the building's use as Growth Parking.

Recommended approval per Exhibits C.29, C.35, C.36, C.38-C.40 and H.5-H.35, signed, stamped, and dated September 19, 2013 with the following Conditions A thru C:

- A.** As part of the building permit application submittal, the following development-related conditions (A – C) must be noted on each of the 4 required site plans or included as a sheet in the numbered set of plans. The sheet on which this information appears must be labeled “ZONING COMPLIANCE PAGE- Case File LU 13-165620 DZ. All requirements must be graphically represented on the site plan, landscape, or other required plan and must be labeled “REQUIRED.”
- B.** The current SW 5th Avenue ADA-compliant ramp will be replaced with a new ADA-compliant door and interior ramp located at the main link entry.
- C.** No field changes allowed.



**By:** \_\_\_\_\_  
Guenevere Millius, Design Commission Chair

Application Filed: June 7, 2013  
Decision Filed: September 20, 2013

Decision Rendered: September 19, 2013  
Decision Mailed: September 24, 2013

**About this Decision.** This land use decision is **not a permit** for development. Permits may be required prior to any work. Contact the Development Services Center at 503-823-7310 for information about permits.

**Procedural Information.** The application for this land use review was submitted on June 7, 2013, and was determined to be complete on July 18, 2013.

*Zoning Code Section 33.700.080* states that Land Use Review applications are reviewed under the regulations in effect at the time the application was submitted, provided that the application is complete at the time of submittal, or complete within 180 days. Therefore this application was reviewed against the Zoning Code in effect on June 7, 2013.

*ORS 227.178* states the City must issue a final decision on Land Use Review applications within 120-days of the application being deemed complete. The 120-day review period may be waived or extended at the request of the applicant. In this case, the applicant did not waive or extend the 120-day review period.

**Some of the information contained in this report was provided by the applicant.**

As required by Section 33.800.060 of the Portland Zoning Code, the burden of proof is on the applicant to show that the approval criteria are met. This report is the final decision of the Design Commission with input from other City and public agencies.

**Conditions of Approval.** This approval may be subject to a number of specific conditions, listed above. Compliance with the applicable conditions of approval must be documented in all related permit applications. Plans and drawings submitted during the permitting process must illustrate how applicable conditions of approval are met. Any project elements that are specifically required by conditions of approval must be shown on the plans, and labeled as such.

These conditions of approval run with the land, unless modified by future land use reviews. As used in the conditions, the term “applicant” includes the applicant for this land use review, any person undertaking development pursuant to this land use review, the proprietor of the use or development approved by this land use review, and the current owner and future owners of the property subject to this land use review.

**Appeal of this decision.** This decision is final unless appealed to City Council, who will hold a public hearing. **Appeals must be filed by 4:30 pm on October 8, 2013** at 1900 SW Fourth Ave. Appeals can be filed Tuesday through Friday on the first floor in the Development Services Center until 3 p.m. After 3 p.m. and on Monday, appeals must be submitted to the receptionist at the front desk on the fifth floor. Information and assistance in filing an appeal is available from the Bureau of Development Services in the Development Services Center or the staff planner on this case. You may review the file on this case by appointment at, 1900 SW Fourth Avenue, Suite 5000, Portland, Oregon 97201.

If this decision is appealed, a hearing will be scheduled and you will be notified of the date and time of the hearing. The decision of City Council is final; any further appeal is to the Oregon Land Use Board of Appeals (LUBA).

Failure to raise an issue by the close of the record at or following the final hearing on this case, in person or by letter, may preclude an appeal to City Council on that issue. Also, if you do not raise an issue with enough specificity to give City Council an opportunity to respond to it, that also may preclude an appeal to LUBA on that issue.

**Who can appeal:** You may appeal the decision only if you have written a letter which was received before the close of the record at the hearing or if you testified at the hearing, or if you are the property owner or applicant. Appeals must be filed within 14 days of the decision. **An appeal fee of \$5,000.00 will be charged (one-half of the application fee for this case).**

Neighborhood associations may qualify for a waiver of the appeal fee. Additional information on how to file and the deadline for filing an appeal will be included with the decision. Assistance in filing the appeal and information on fee waivers are available from the Bureau of Development Services in the Development Services Center, 1900 SW Fourth Ave., First Floor. Fee waivers for neighborhood associations require a vote of the authorized body of your association. Please see appeal form for additional information.

#### **Recording the final decision.**

If this Land Use Review is approved the final decision must be recorded with the Multnomah County Recorder. A few days prior to the last day to appeal, the City will mail instructions to the applicant for recording the documents associated with their final land use decision.

- *Unless Appealed, The final decision may be recorded on or after October 9, 2013.*
- A building or zoning permit will be issued only after the final decision is recorded.

The applicant, builder, or a representative may record the final decision as follows:

- **By Mail:** Send the two recording sheets (sent in separate mailing) and the final Land Use Review decision with a check made payable to the Multnomah County Recorder to: Multnomah County Recorder, P.O. Box 5007, Portland OR 97208. The recording fee is identified on the recording sheet. Please include a self-addressed, stamped envelope.
- **In Person:** Bring the two recording sheets (sent in separate mailing) and the final Land Use Review decision with a check made payable to the Multnomah County Recorder to the County Recorder's office located at 501 SE Hawthorne Boulevard, #158, Portland OR 97214. The recording fee is identified on the recording sheet.

For further information on recording, please call the County Recorder at 503-988-3034

For further information on your recording documents please call the Bureau of Development Services Land Use Services Division at 503-823-0625.

**Expiration of this approval.** An approval expires three years from the date the final decision is rendered unless a building permit has been issued, or the approved activity has begun.

Where a site has received approval for multiple developments, and a building permit is not issued for all of the approved development within three years of the date of the final decision, a new land use review will be required before a permit will be issued for the remaining development, subject to the Zoning Code in effect at that time.

**Applying for your permits.** A building permit, occupancy permit, or development permit must be obtained before carrying out this project. At the time they apply for a permit, permittees must demonstrate compliance with:

- All conditions imposed here.

- All applicable development standards, unless specifically exempted as part of this land use review.
- All requirements of the building code.
- All provisions of the Municipal Code of the City of Portland, and all other applicable ordinances, provisions and regulations of the City.

Chris Caruso  
September 19, 2013

**The Bureau of Development Services is committed to providing equal access to information and hearings. Please notify us no less than five business days prior to the event if you need special accommodations. Call 503-823-7300 (TTY 503-823-6868).**

**EXHIBITS – NOT ATTACHED UNLESS INDICATED**

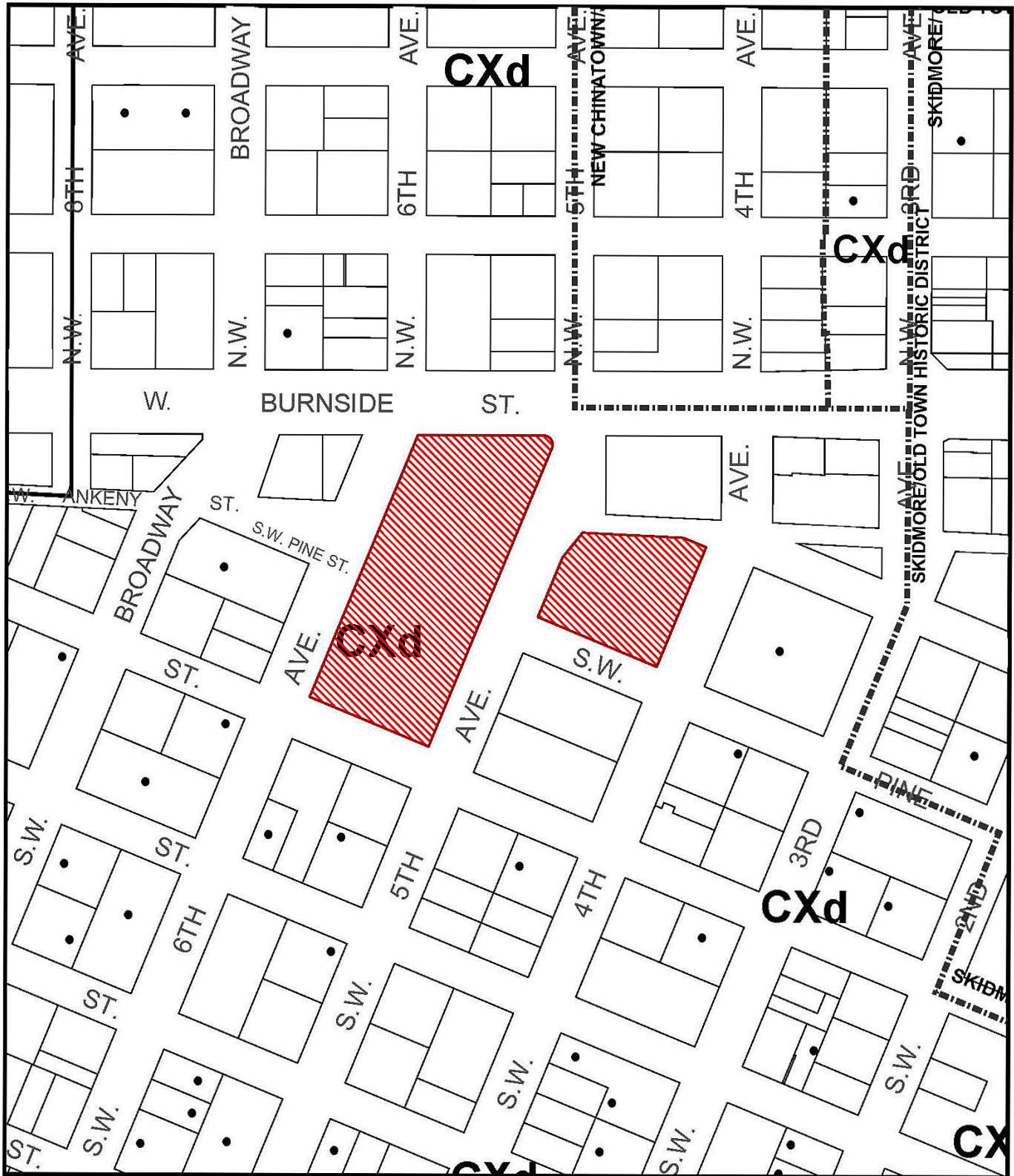
- A. Applicant's Information
  - 1. Narrative & Zoning Summary
  - 2. Supplemental Information
  - 3. Design Guidelines
- B. Zoning Map (attached)
- C. Plan & Drawings
  - 1. Site Plan/General Scope of Work
  - 2. Existing Ground Floor Plan
  - 3. Proposed Ground Floor Plan
  - 4. Existing Second Floor
  - 5. Proposed Second Floor
  - 6. Existing Third Floor
  - 7. Proposed Third Floor
  - 8. Elevations
  - 9. Elevations
  - 10. South Plaza Entrance Elevation
  - 11. South Plaza Entrance
  - 12. Wall Section at South Plaza
  - 13. Wall Section at South Entry Vestibule
  - 14. South Vestibule Roof Plan
  - 15. East Elevation Breezeway Infill
  - 16. Wall Sections
  - 17. Typical Infill Glass Entry/Partial East Elevation
  - 18. Plaza East Entry Elevation
  - 19. Wall Section at East Plaza Entry/East Plaza Canopy
  - 20. Link Entrance and Infill East Elevation
  - 21. Link Entrance West Elevation
  - 22. East/West Link Canopy Plan and Section
  - 23. Exterior Materials
  - 24. Bike Parking Street Level
  - 25. Bike Parking Parking Level
  - 26. Proposed South Plaza
  - 27. Proposed South Plaza
  - 28. Section Through Planter
  - 29. Landscape Plants
  - 30. Planter Details
  - 31. South Plaza Aerial View
  - 32. South Plaza from 5<sup>th</sup> Street



33. South Plaza from 6<sup>th</sup> Street
  34. South Plaza from 6<sup>th</sup> Street
  35. Plaza Pavers
  36. Solarban
  37. Terrace Wood Deck
  38. SuperWall SSG
  39. A112 Floor Plan Level 1 North
  40. G011 Code Analysis Level 1
- D. Notification information:
1. Request for response
  2. Posting letter sent to applicant
  3. Notice to be posted
  4. Applicant's statement certifying posting
  5. Mailed notice
  6. Mailing list
- E. Agency Responses:
1. Bureau of Environmental Services
  2. Bureau of Transportation Engineering and Development Review
  3. Water Bureau
  4. Fire Bureau
  5. Bureau of Parks, Forestry Division
  6. Life Safety Review Section of BDS
  7. Police Bureau
- F. Letters
1. Doug Klotz, August 14, 2013, would like public access easement altered for ADA
  2. Doug Klotz, August 28, 2013, would like the interior Ankeny alignment fully ADA accessible and carry the Condition of Approval issued in 1972.
  3. Douglas L. Obletz, Portland Mall Management Inc, September 3, 2013, fully supports the proposal.
  4. Doug Klotz, September 3, 2013, supports new ADA ramp and wants the 1972 public access Condition re-applied to the site.
- G. Other
1. Original LUR Application
  2. Incomplete Letter
  3. Pre-Application Conference Summary Memo
  4. Design Advice Request Summary Memo
  5. Ordinance 132075
  6. CU 035-72 Conditions of Approval
  7. Permit 477192 Plaza Plan from 1972
  8. Permit 477192 Tower Concept Plan from 1972
  9. Staff Memo, August 26, 2013
  10. Staff Report, September 5, 2013
  11. Staff PowerPoint, September 5, 2013
- H. [Received at the September 9, 2013 hearing]
1. Staff Memo, September 5, 2013
- [Received after the September 9, 2013 hearing]
2. Staff Memo, September 13, 2013
  3. Revised Staff Report
  4. Staff PowerPoint, September 19, 2013
  5. Ground Floor Plan/General Scope of Work (attached)
  6. Existing Ground Floor Plan
  7. Proposed Ground Floor Plan (attached)
  8. Existing Second Floor
  9. Proposed Second Floor
  10. Existing Third Floor

11. Proposed Third Floor
12. Elevations (attached)
13. Elevations (attached)
14. South Plaza Entrance – South Elevation
15. South Plaza Façade – West Elevation of Typical Bay
16. Wall Section at South Plaza
17. Wall Section at South Plaza
18. Plan Details at South Facade
19. East Elevation Breezeway Infill
20. Existing and Proposed Infill Wall Sections
21. Typical Infill Glass Entry/Partial East Elevation
22. Link Infill East Elevation
23. Exterior Materials
24. Bike Parking Street Level
25. Bike Parking Parking Level
26. Existing South Plaza
27. Proposed South Plaza
28. Proposed South Plaza Planting Plan (attached)
29. Section Through Planter
30. Planter Details
31. South Plaza Aerial View
32. South Plaza from 5<sup>th</sup> Street
33. South Plaza from 6<sup>th</sup> Street
34. South Plaza from 6<sup>th</sup> Street
35. Zoning Requirements

cc: Applicants and Representatives  
Neighborhood Associations  
Those who testified, orally or in writing



# ZONING

 Site

 Historic Landmark



This site lies within the:  
CENTRAL CITY PLAN DISTRICT  
DOWNTOWN

File No.	LU 13-165620 DZ
1/4 Section	3029
Scale	1 inch = 200 feet
State_Id	1N1E34CD 80000
Exhibit	B (Jun 11, 2013)

# ARCHITECTURAL DRAWINGS

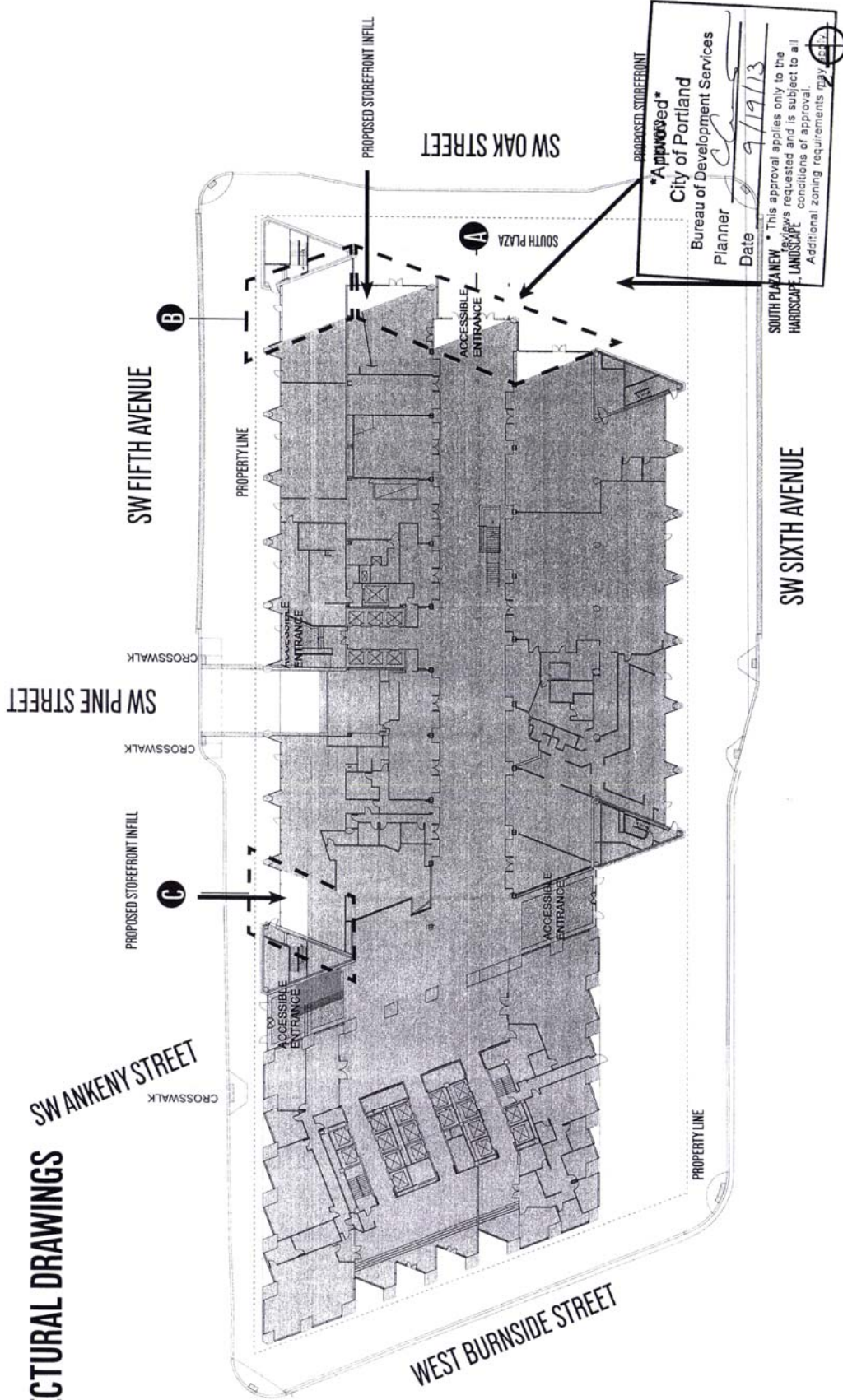


EXHIBIT A

LU - 13 - 165620 DZ EXH. H-5

# GROUND FLOOR PLAN - GENERAL SCOPE OF WORK





EXHIBIT 2

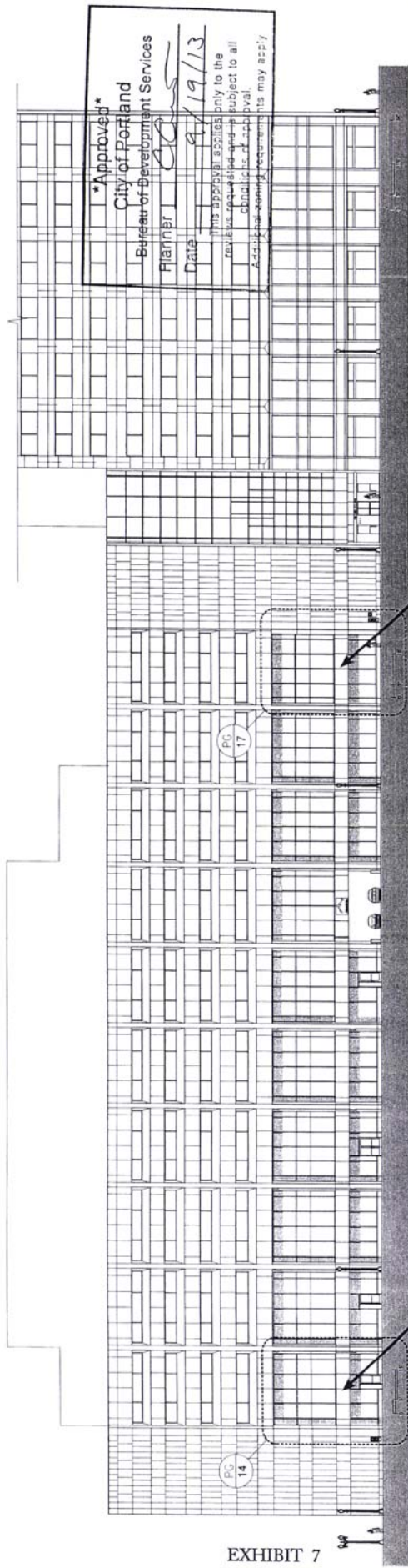
LU - 13 - 165620 DZ

EXH. H-7

# PROPOSED GROUND FLOOR PLAN



WEST ELEVATION



EAST ELEVATION

\* Approved\*  
 City of Portland  
 Bureau of Development Services  
 Planner: *CS*  
 Date: *9/19/13*  
 This approval applies only to the  
 revisions recorded and is subject to all  
 conditions of approval.  
 Additional permit requirements may apply.

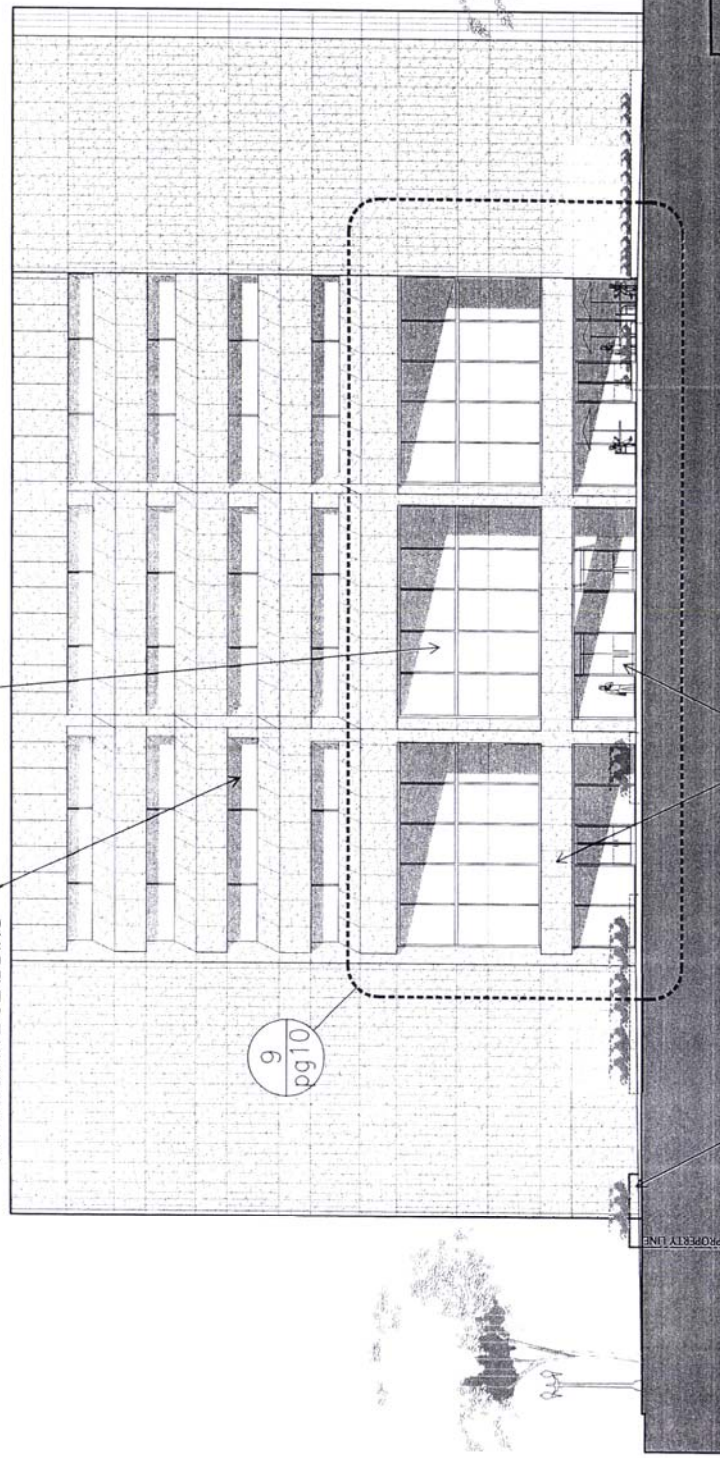
ELEVATIONS



EXISTING DARK BRONZE GLASS WITH BRONZE ANOD. ALUM. MULLIONS AND GRANITE CLADDING

NEW BRONZE ANODIZED ALUMINUM CURTAINWALL INFILL WITH CLEAR GLASS.

9  
pg 10



REPURPOSED GRANITE SLABS AT NEW PLANTER WALLS

NARROW FRAME STYLE BRONZE ANOD. ALUM. DOORS TO MATCH EXISTING.

GRANITE CLADDING TO MATCH EXISTING AT 2ND FLOOR PROJECTION

A. SOUTH ELEVATION

Approved  
City of Portland  
Bureau of Development Services  
Planner *CCS*  
Date 9/19/13

\* This approval applies only to the reviews requested and is subject to all conditions of approval.  
Additional zoning requirements apply.

ELEVATIONS

EXHIBIT 8

LU - 13 - 165620 DZ EXH. H-13

