

USBANCORP TOWER & PLAZA

Exterior Alterations

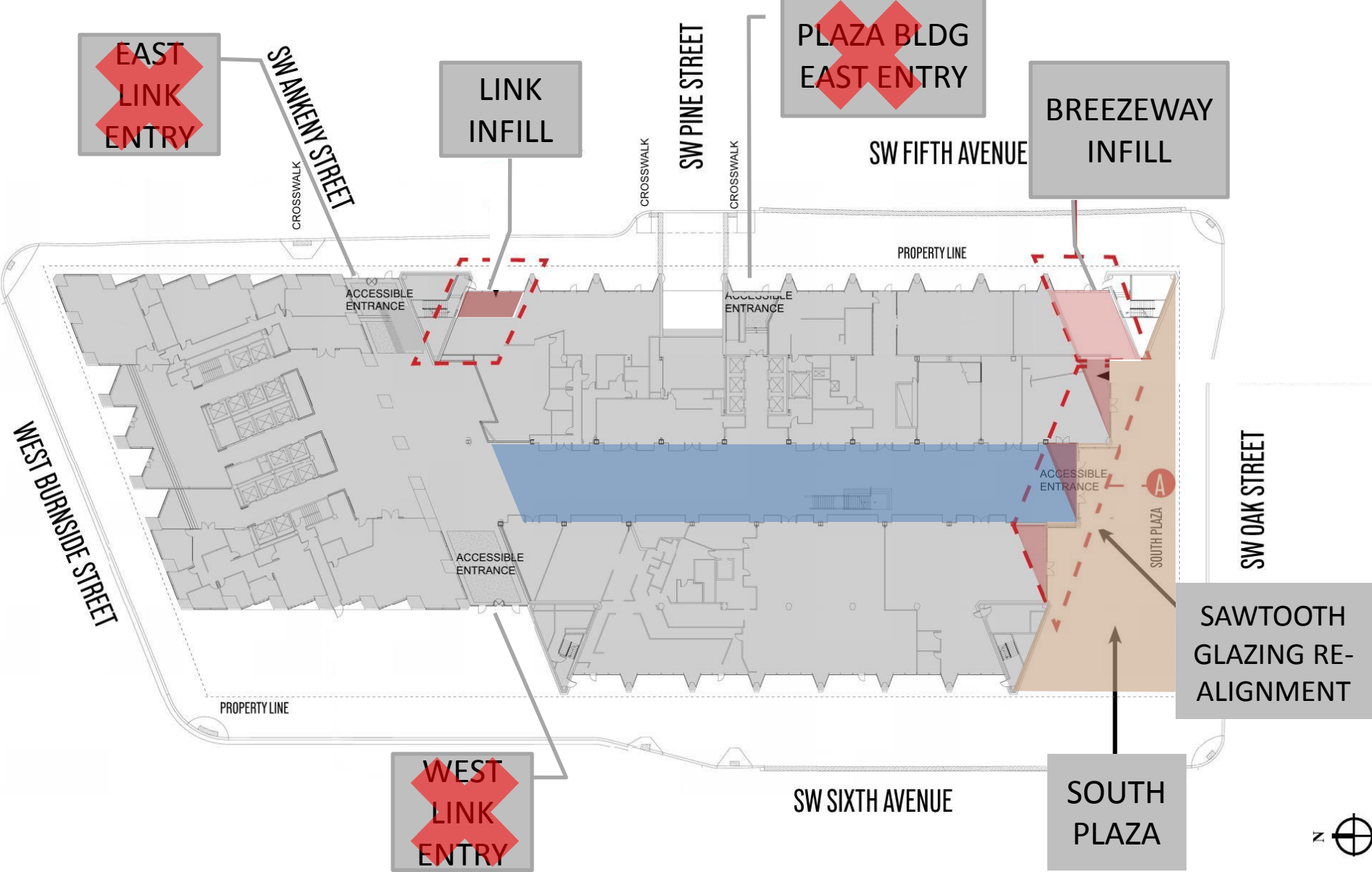
Design Review

September 19, 2013

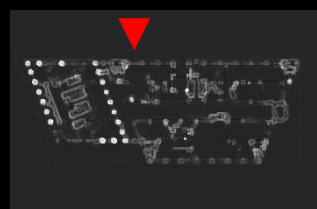
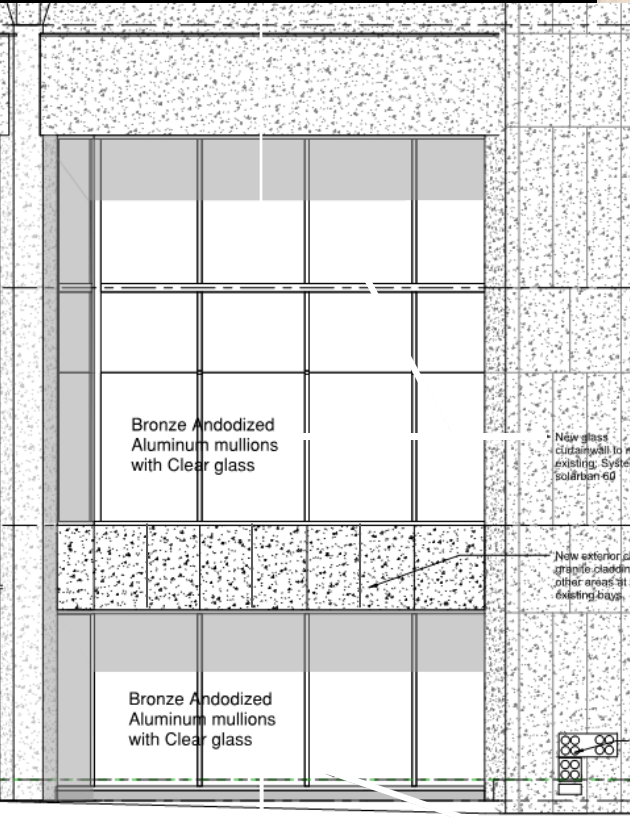
- Design Review Hearing #1

Summary Comments:

1. Reduce number of materials - metal finishes
2. Plaza – Seat wall depth, Trees, Street side Planter edge
3. Existing building granite walls
3. Weather Protection at Entrances
4. Roof Deck
5. Vestibule



PROPOSED GROUND FLOOR PLAN



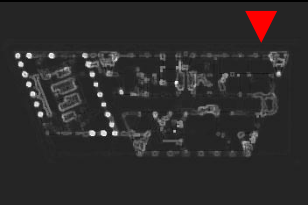
LINK INFILL



NEW RETAIL STOREFRONT TO MATCH ADJACENT

NEW GRANITE CLAD 2ND FLOOR PROJECTION

NEW CURTAINWALL ABOVE TO CLOSELY MATCH ADJACENT

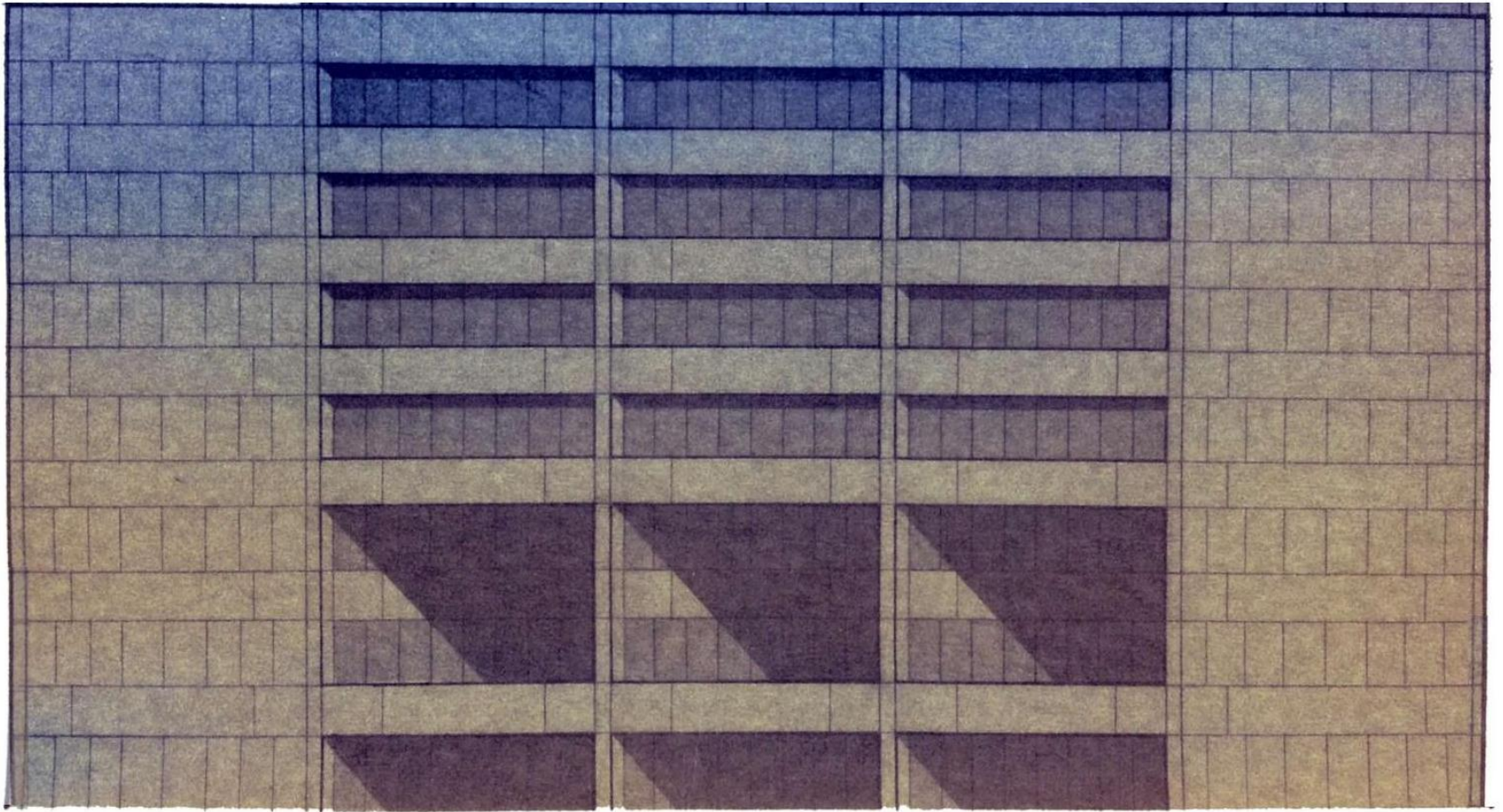


EAST BREEZEWAY INFILL



SOUTH FAÇADE - EXISTING

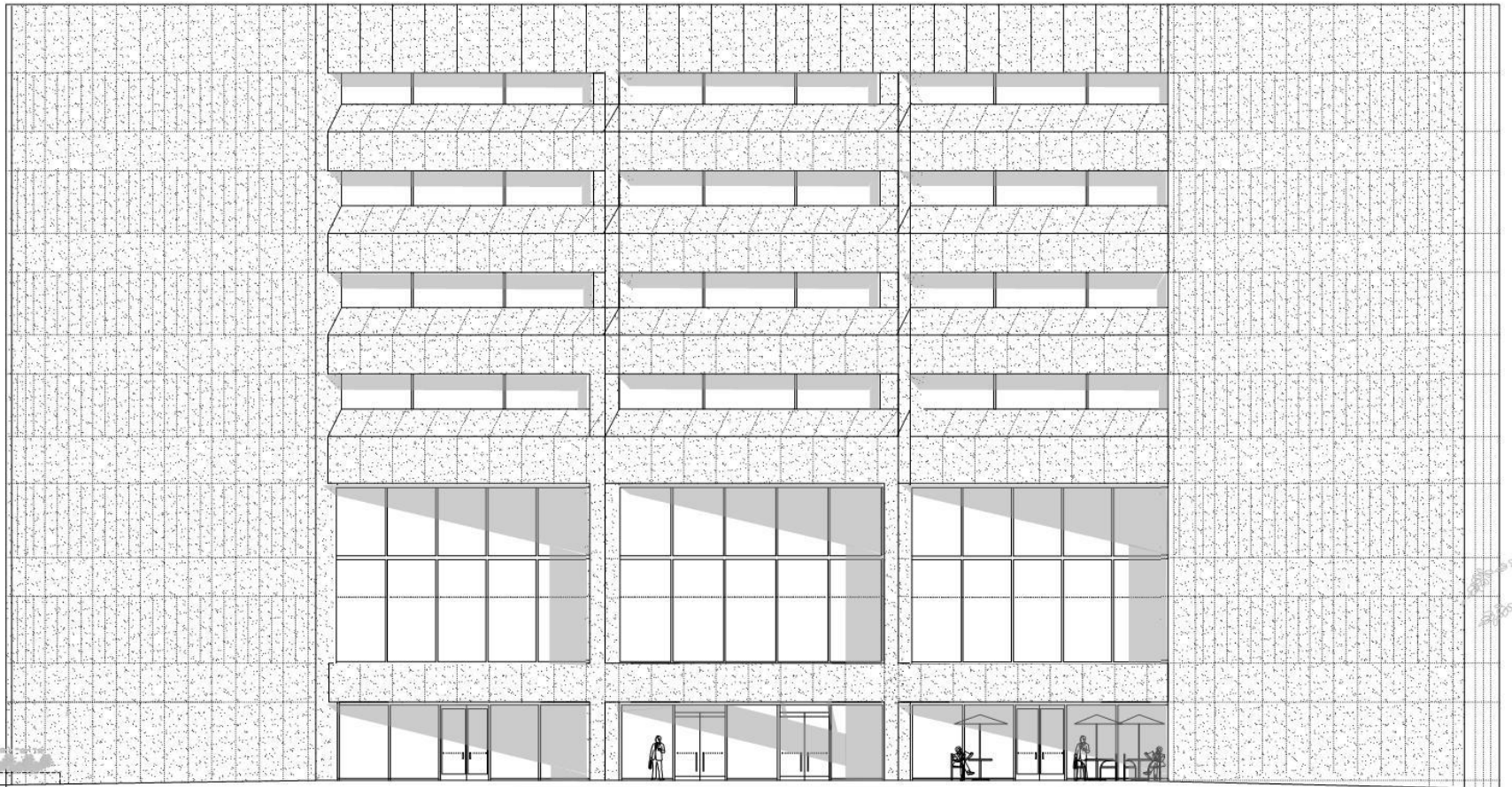
GBD



SOUTH ELEVATION DRAWING from PIETRO BELLUSCHI ARCHIVES at THE OREGON HISTORICAL SOCIETY
December 1971



SOUTH FAÇADE - SOM/BELLUSCHI CONCEPT SKETCH



SOUTH FAÇADE – SOM/BELLUSCHI CONCEPT SKETCH



MASS
Public use

RIGHT
2 LANES
ONLY

Public use

Public use

Public use





U.S. BANCORP

STARBUCKS COFFEE



STARBUCKS COFFEE



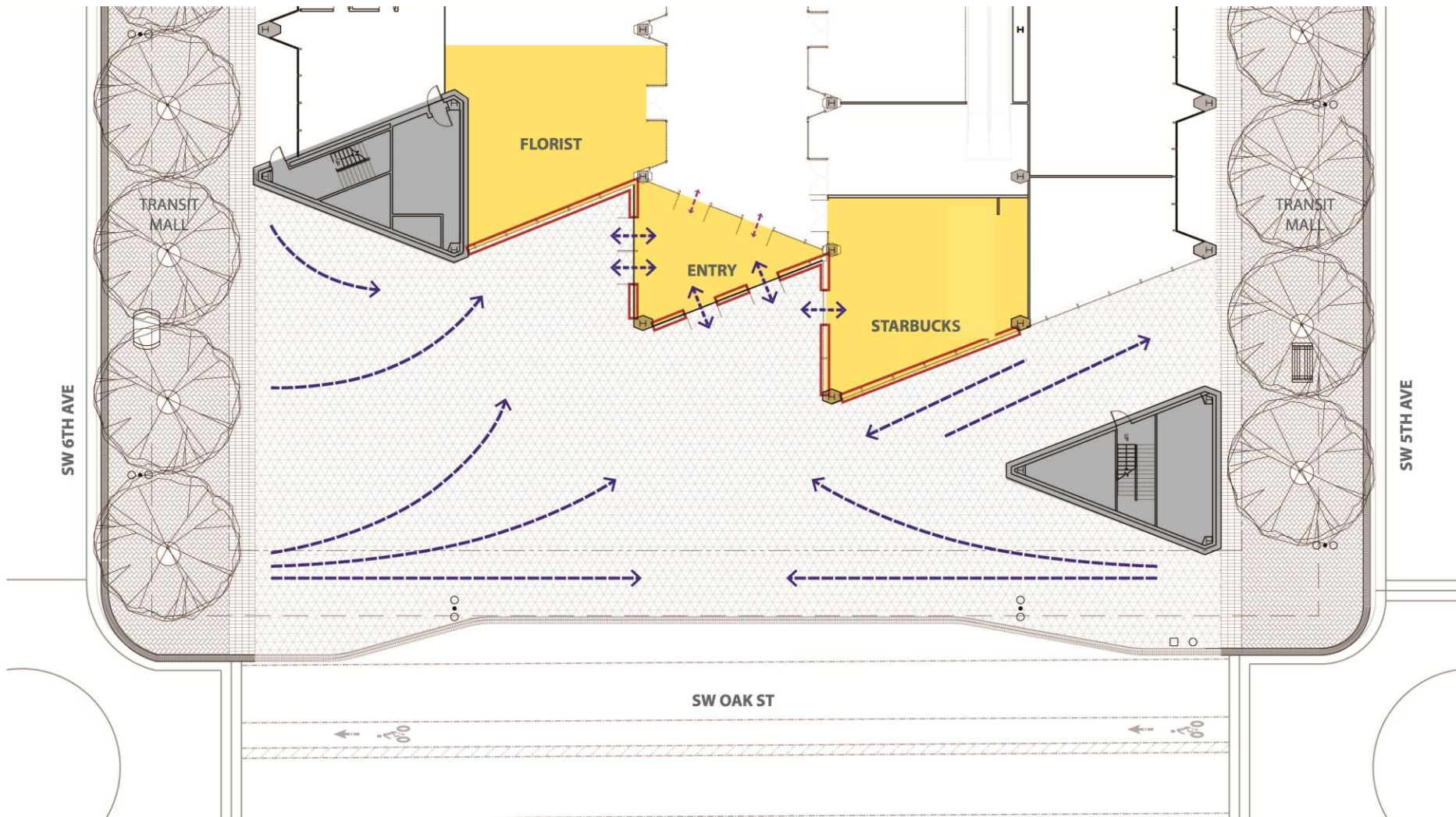


Perennium Lake

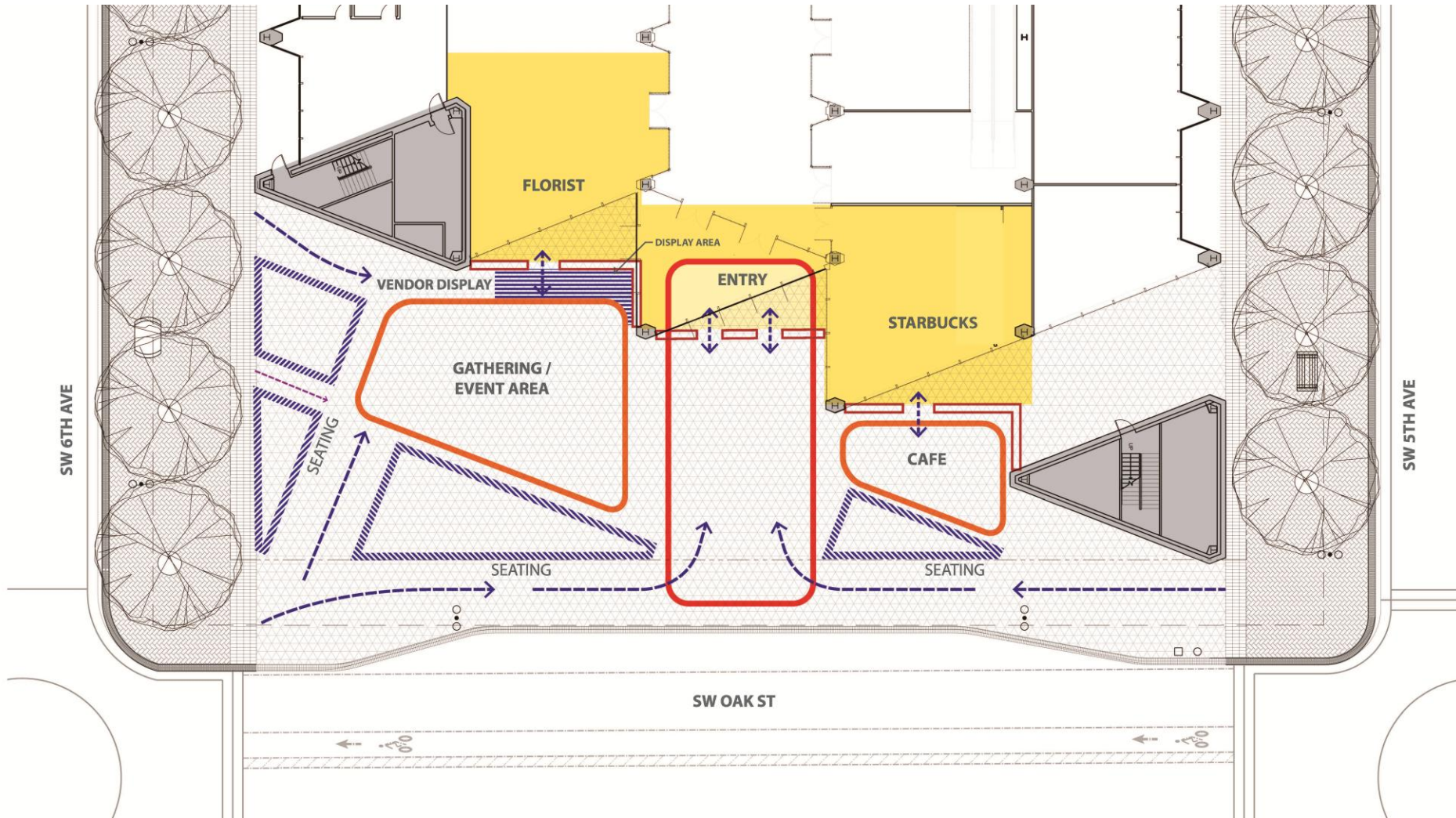
FLOWERS EV... G DECOR

Gerber
Daisies!
\$1 Today
Only

9/16 Tim



SOUTH PLAZA - EXISTING



SOUTH PLAZA - PROPOSED

SW 6th Avenue

SW 5th Avenue

SW Oak Street



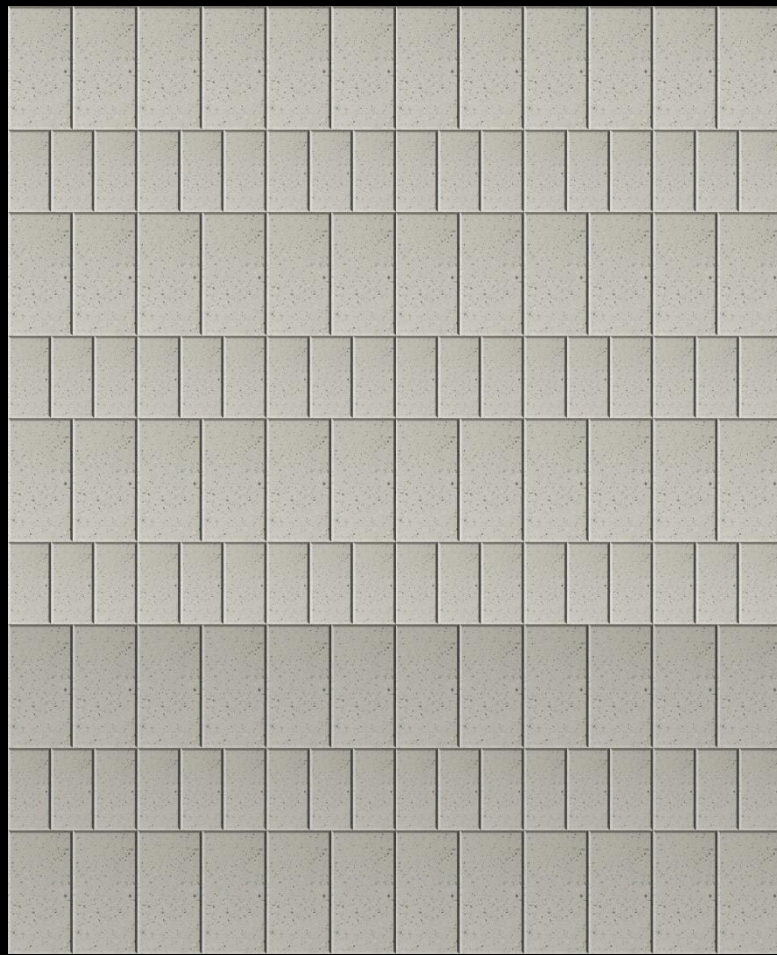




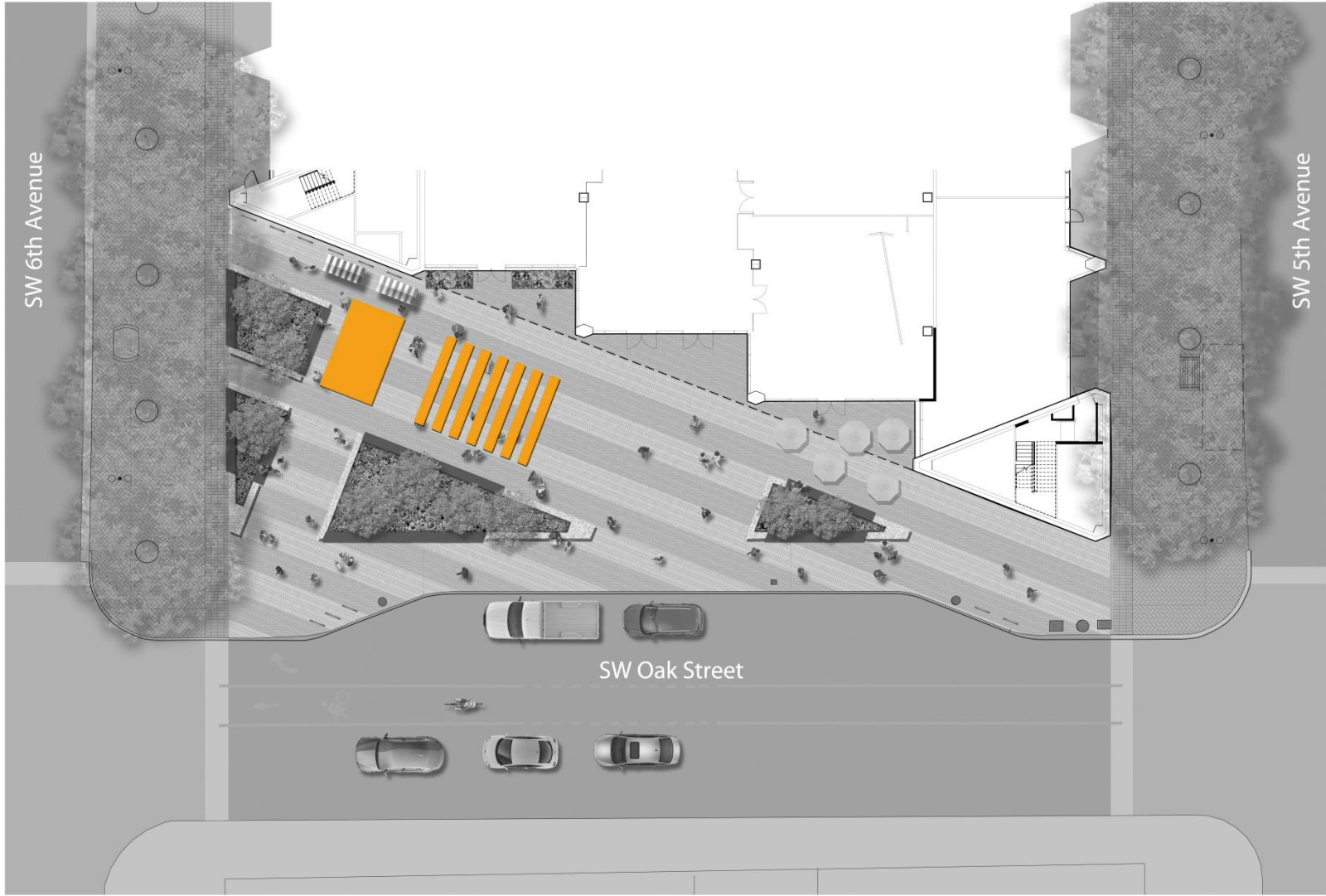








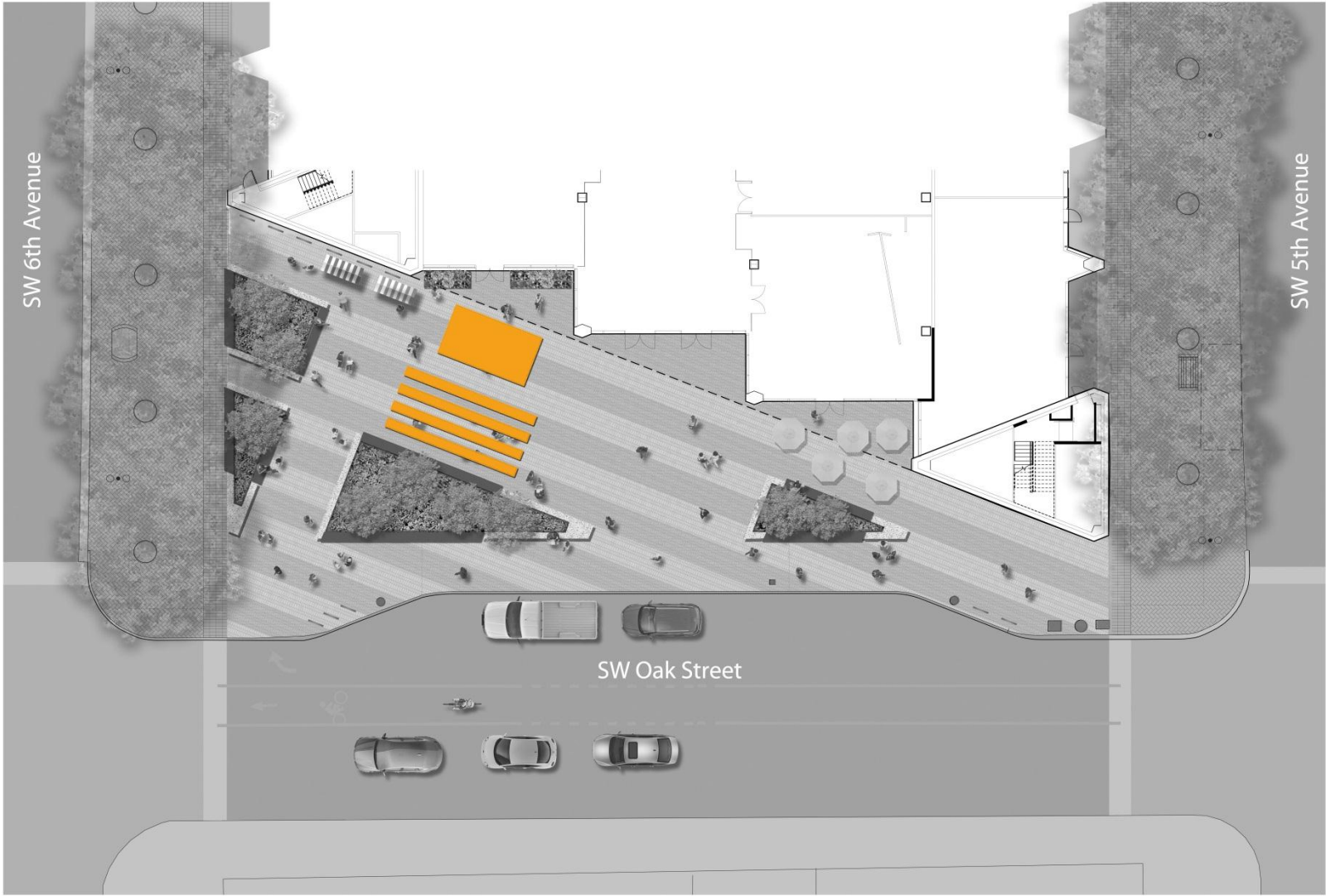




SW 6th Avenue

SW 5th Avenue

SW Oak Street









SW 6th Avenue

SW 5th Avenue



SW Oak Street



Proposed Design successfully addresses all of the comments from the last hearing:

- ✓ 1. Reduce number of materials - metal finishes
- ✓ 2. Plaza – Seat wall depth, Trees, Street side Planter edge
- ✓ 3. Maintain integrity of existing building granite walls
- ✓ 4. Weather Protection at Entrances
- ✓ 3. Roof Deck
- ✓ 4. Vestibule

