



Complete Neighborhoods Refresh

Planning and Sustainability Commission

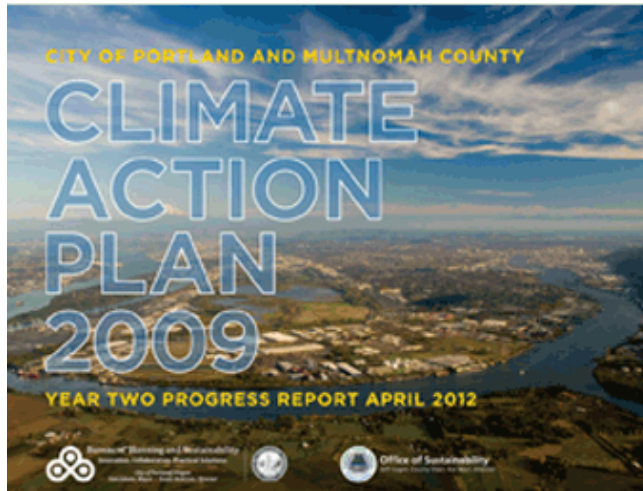
September 10th, 2013



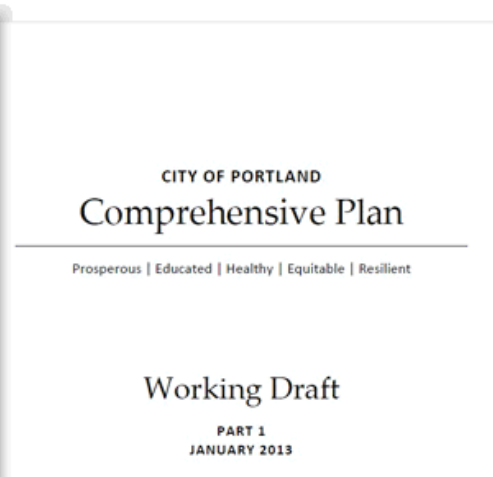
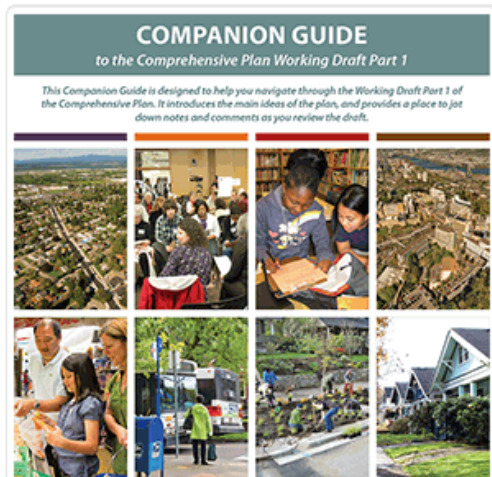
Bureau of Planning and Sustainability
Innovation. Collaboration. Practical Solutions.



Charge to create complete neighborhoods



- Reduce emissions
- Increase livability
- Reduce disparities



Citywide Outcomes

- Healthy People, Environment and Economy
- Carbon Reduction & Increased Livability
- Diversity of Experience & People

Expanding completeness can:

- Increase access to opportunity
- Reduce demand on systems (transportation, stormwater, etc.)



Healthy People, Healthy Environment, Healthy Economies

- Civic, Cultural, and Community amenities
- Recreation & Open Space
- Food Access
- Resilient
 - Strengthens access to jobs
 - Enhances environmental systems, grows the green
 - Combats involuntary displacement by expanding number of high amenity areas across the city



A City of Short Trips

- Sustainable Urban Form
 - More than centers and corridors
- Transportation Choices
 - Convenient transit system
 - Walkable and bikeable
 - Shorter automobile trips
- Access to goods and services
- Access to employment



A City of Distinct Places

- One size doesn't fit all: Pattern Areas
- Creating Choices
 - Housing opportunities
 - Place types from single family neighborhoods to differently scaled centers
- Design (district, street, & site)
 - More active, urban environments
 - More demand for resources



What is in a complete neighborhood?



- Transportation options
- Access to shops and services
- Access to food
- Access to schools and open space



Complete Neighborhoods Strategy

- Strengthen the role of centers and corridors as high amenity areas
- Create more centers
- Increase connections to these activity centers, open spaces, and support greater choices (access to a variety of places within a short distance)

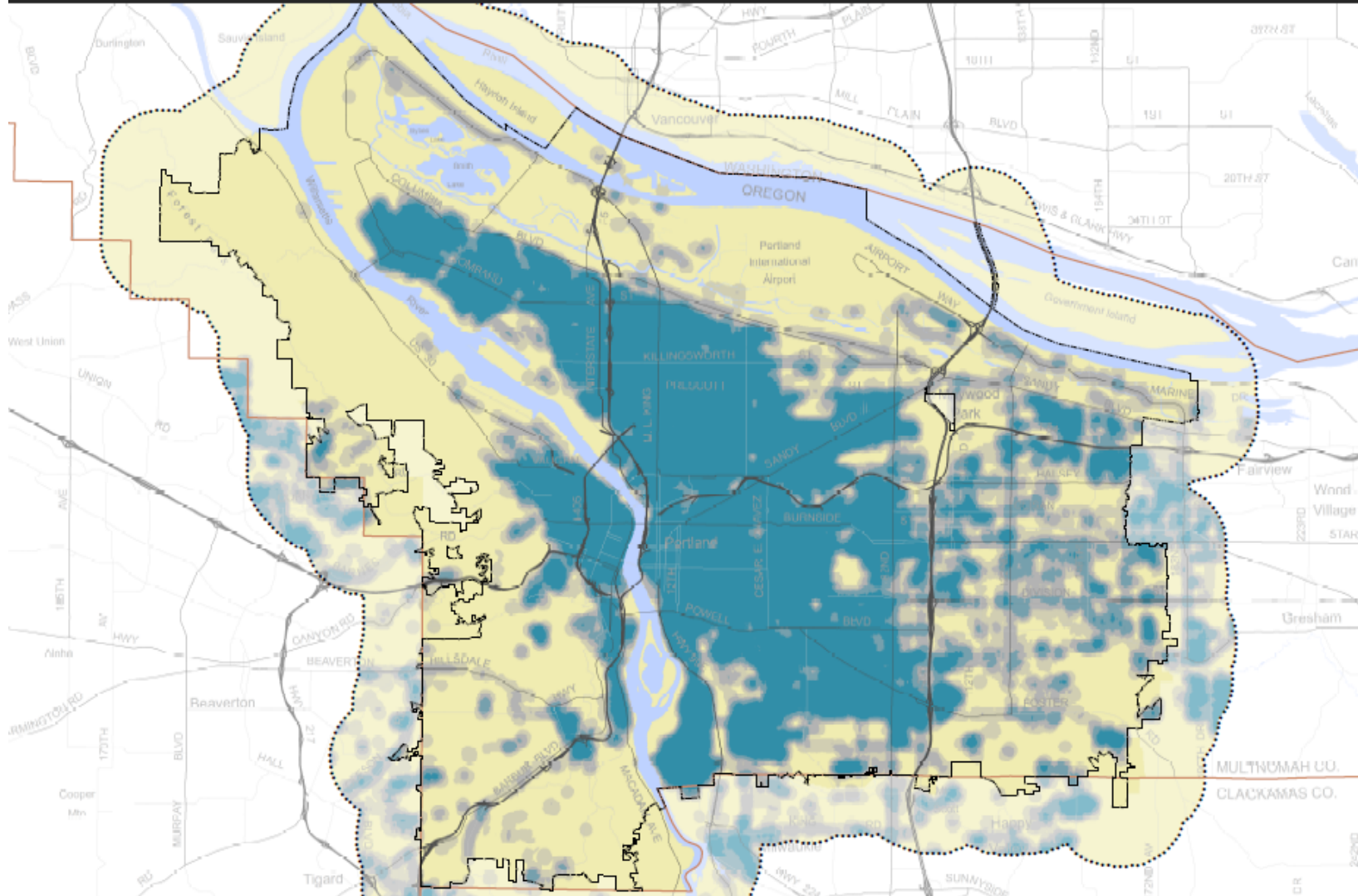


What elements are being measured?

- Walkability
- Bicycle Access
- Transit Access
- Commercial Services
- Food
- Parks and Recreation
- Elementary Schools



Complete Neighborhoods--Draft Map



Sidewalk Density Indicators

Legend

- City Boundary
- County Boundaries
- 1 Mile Data Collection Extent

Sidewalk Density Score

- Low
- Medium
- High

Search Radius:
1/8 mile (660 feet)

Scoring Index:
Both Sides Paved (3 pts.)
One Side Paved (2 pts.)
Partial Sidewalk (1 pt.)



Bureau of Planning and Sustainability
Innovation. Collaboration. Practical Solutions.



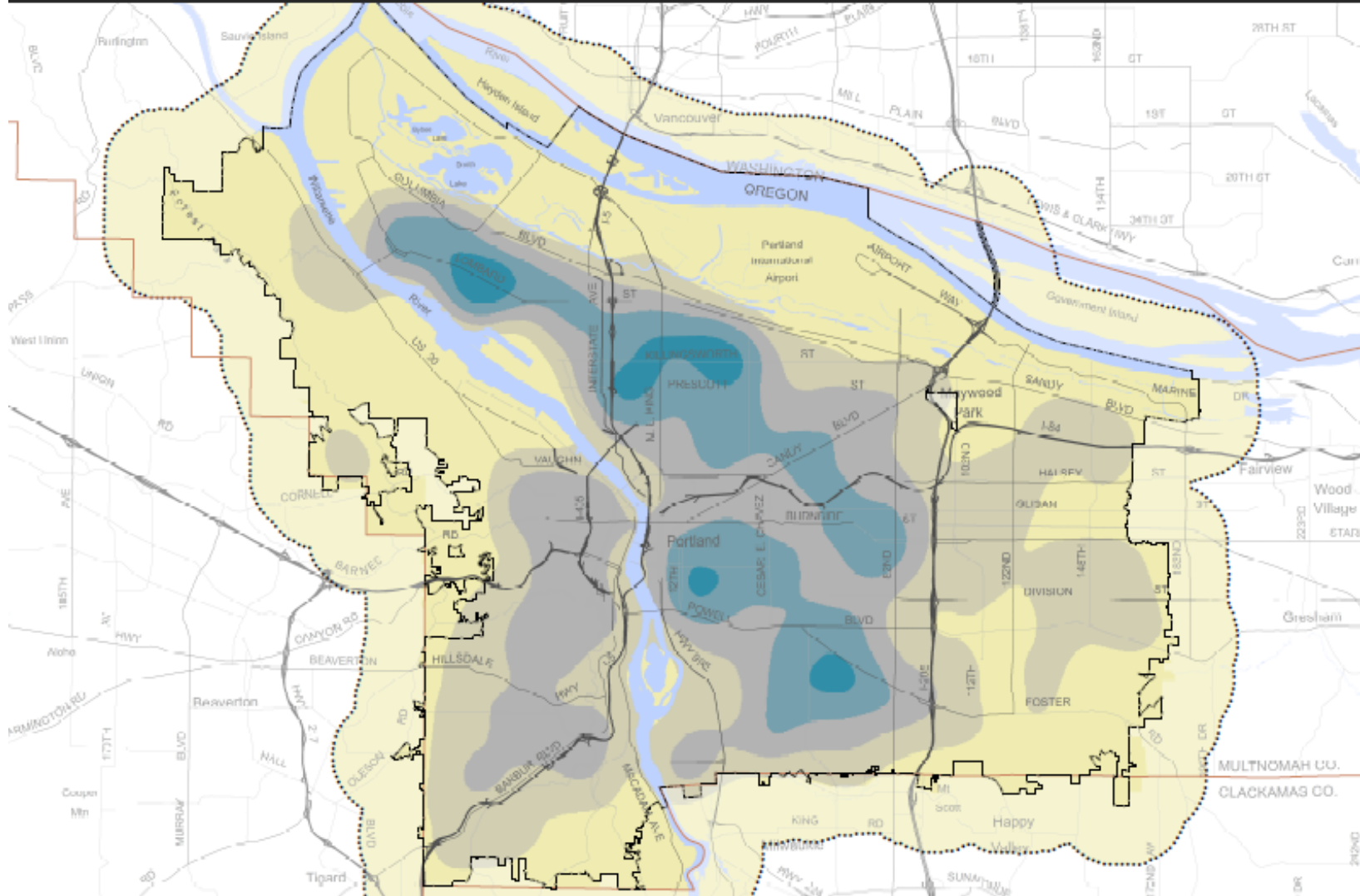
City of Portland, Oregon
Charlie Hale, Mayor - Susan Anderson, Director

July 3rd, 2013
City of Portland, Oregon // Bureau of Planning & Sustainability // Geographic Information System

The information on this map was derived from City of Portland GIS databases. Care was taken in the creation of this map but it is provided "as is". The City of Portland accepts no responsibility for errors, omissions or positional accuracy.



Complete Neighborhoods--Draft Map



Street Connectivity

Legend

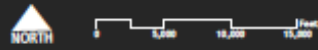
- City Boundary
- County Boundaries
- 1 Mile Data Collection Extent
- Local Service Traffic Street

Street Connectivity

- Low
- Medium
- High

September 26, 2013
 City of Portland, Oregon // Bureau of Planning & Sustainability // Geographic Information System

The information on this map was derived from City of Portland GIS datasets. Care was taken to the creation of this map but it is provided "as is". The City of Portland cannot accept responsibility for errors, omissions or qualified services.



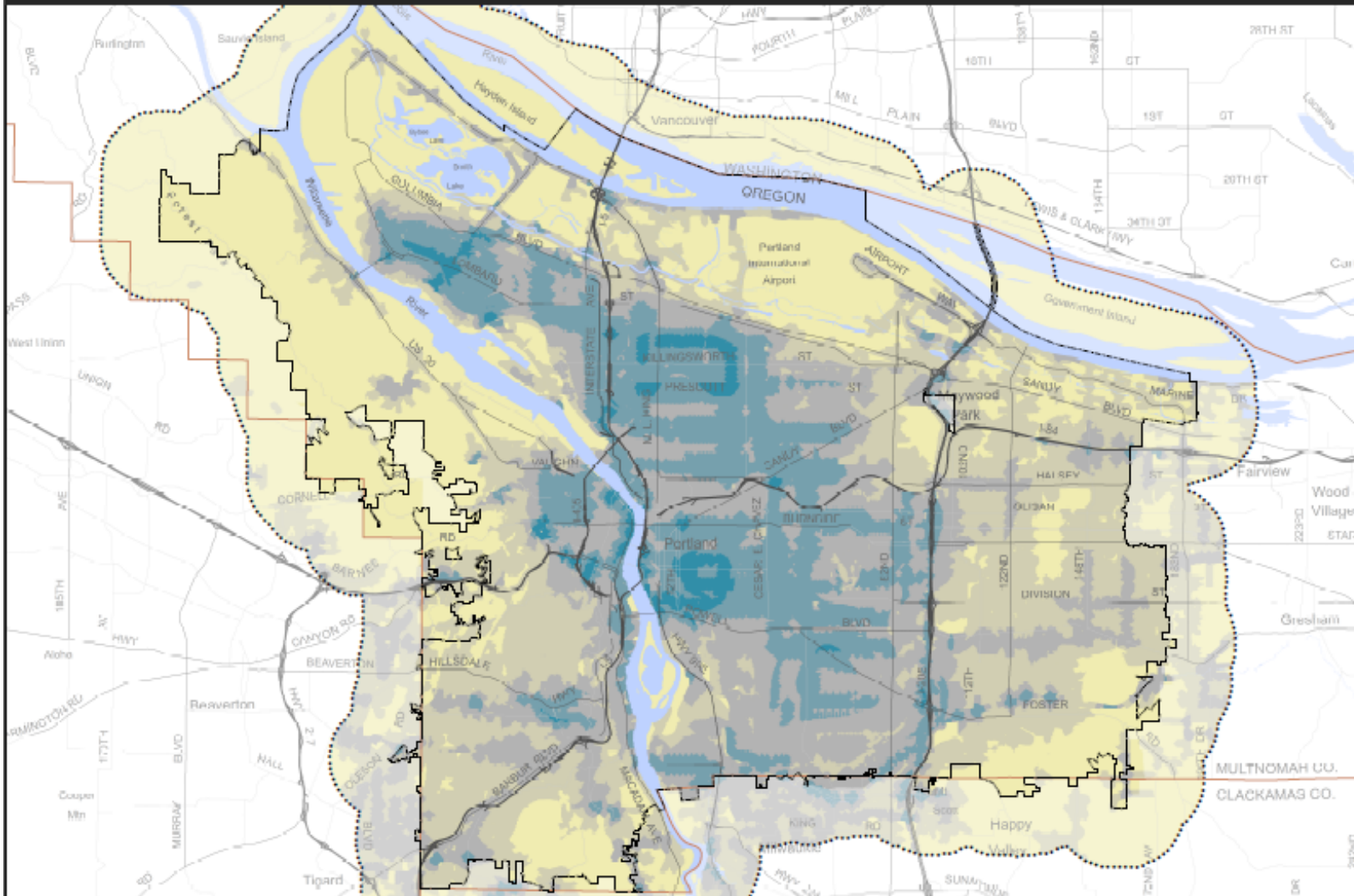
Bureau of Planning and Sustainability
 Innovation. Collaboration. Practical Solutions.



City of Portland, Oregon
 Charlie Hales, Mayor - Susan Anderson, Director



Complete Neighborhoods--Draft Map



Bicycle Route Access and Connectivity Indicators

Legend

- City Boundary
- County Boundaries
- 1 Mile Data Collection Extent

Bicycle Store

- Low
- Medium
- High

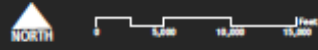
Proximity Index:
 1/8 mile (4 pts.)
 1/4 mile (3 pts.)
 1/2 mile (2 pts.)
 1 mile (1 pt.)

Scoring Weights:
 Bicycle Trail (x4)
 Advisory Bike Lane/Neighborhood Greenway (x3)
 Separated In-Roadway (x2)
 Enhanced Shared Roadway (x1)

Density* (Connectivity) Weights:
 Street Connectivity (45%)
 Bicycle Network Connectivity (5%)
 *Search radii (5280 feet)

September 30th, 2013
 City of Portland, Oregon // Bureau of Planning & Sustainability // Geographic Information System

The information on this map was derived from City of Portland GIS datasets. Care was taken to the creation of this map but it is provided "as is". The City of Portland cannot accept any responsibility for errors, omissions or potential consequences.
 C:\p\gis\workspace\gdb\input\pdx_1\workspace\draft\complete_neighborhoods\pdx_1\workspace\complete_neighborhoods\complete_neighborhoods.aprx



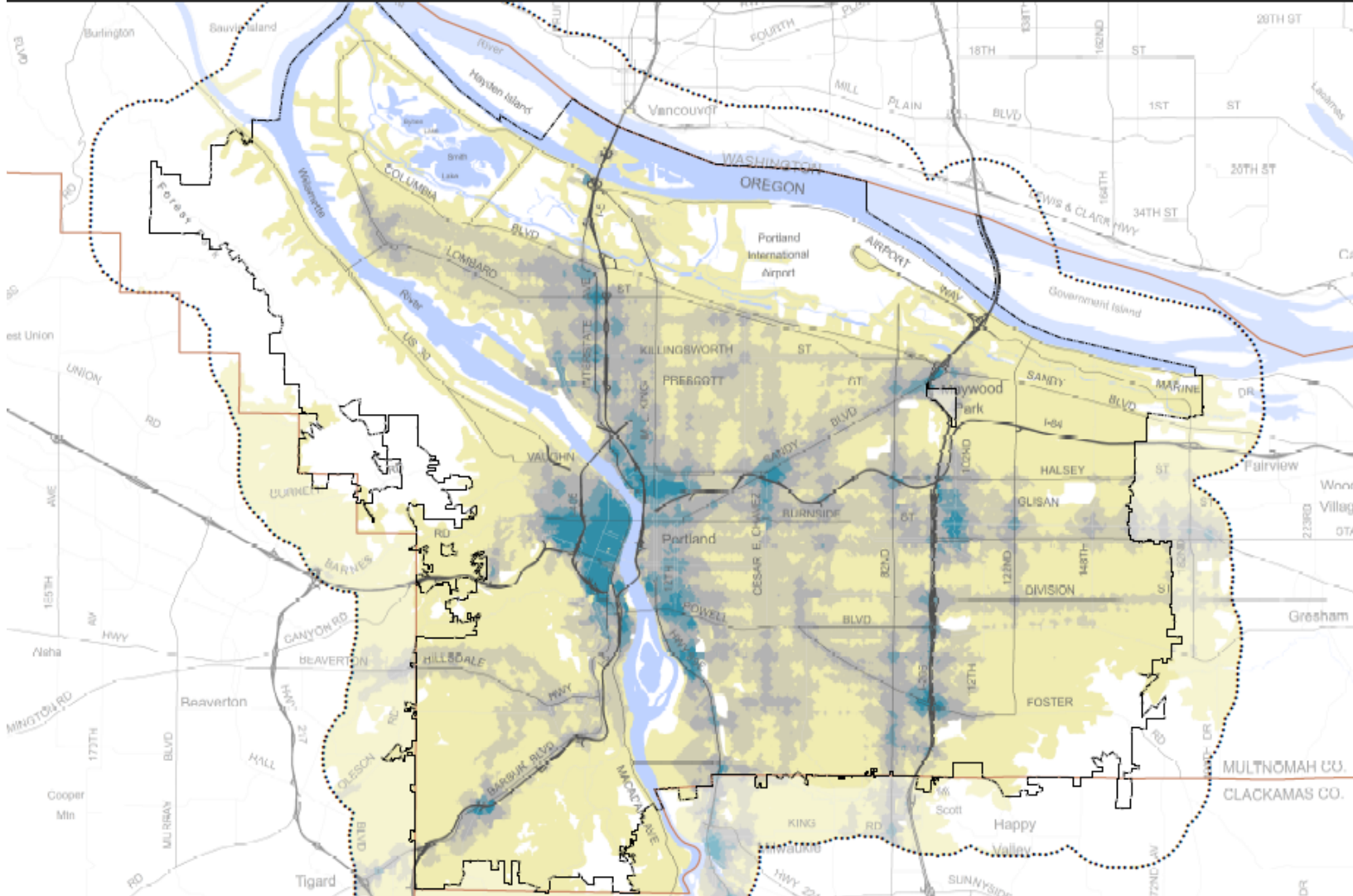
Bureau of Planning and Sustainability
 Innovation. Collaboration. Practical Solutions.



City of Portland, Oregon
 Cheryl Healy, Mayor - Dawn Anderson, Director



Complete Neighborhoods--Draft Map



Transit Indicators

Legend

- City Boundary
- County Boundaries
- 1 Mile Data Collection Extent

Transit Score

- Low
- Medium
- High

Proximity Index:
 1/8 mile (4 pts.)
 1/4 mile (3 pts.)
 1/2 mile (2 pts.)
 1 mile (1 pt.)

Scoring Weights:
 MAX and Transit Centers (x4)
 Frequent Service/Streetcar/Tram (x3)
 Regular Service (x2)
 Weekday/Non-Sat/Rushhour Service (x1)



Bureau of Planning and Sustainability
 Innovation. Collaboration. Practical Solutions.



City of Portland, Oregon
 Charlie Melis, Mayor - Susan Anderson, Director

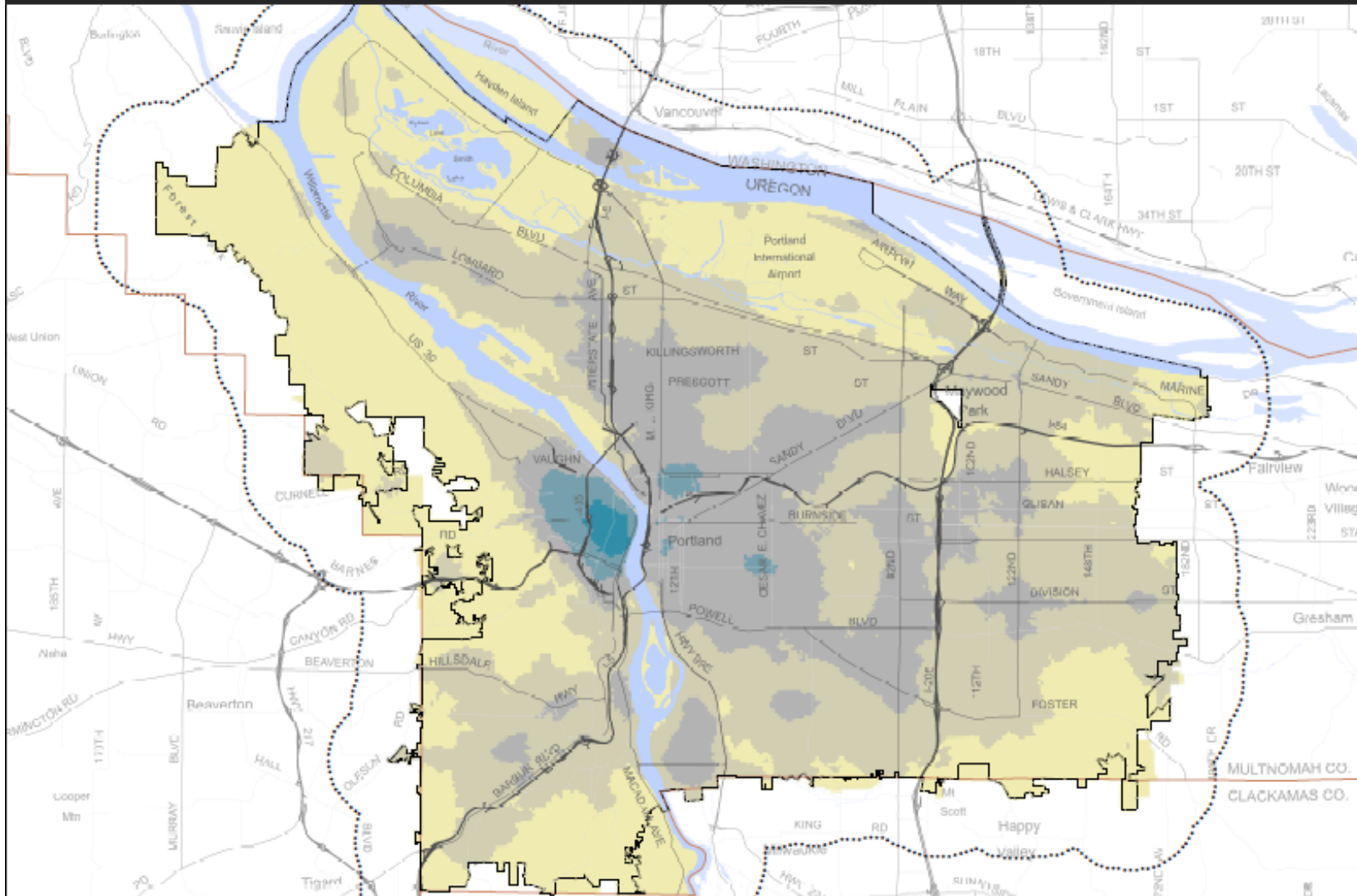
July 18th, 2013
 City of Portland, Oregon // Bureau of Planning & Sustainability // Geographic Information System

The information on this map was derived from City of Portland GIS datasets. Care was taken in the creation of this map but it is provided "as is." The City of Portland cannot accept any responsibility for errors, omissions or professional liability.



Complete Neighborhoods--Draft Map

Commercial Services Indicators



Legend

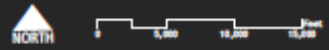
- City Boundary
- County Boundaries
- 1 Mile Data Collection Extent

Commercial Services Score

- Low
- Medium
- High

September 26th, 2013
 City of Portland, Oregon // Bureau of Planning & Sustainability // Geographic Information System

The information on this map was derived from City of Portland GIS datasets. Users are asked to use caution in the analysis of this map as it is provided "as is". The City of Portland cannot accept any responsibility for errors, omissions or professional services.



Bureau of Planning and Sustainability
 Innovation. Collaboration. Practical Solutions.

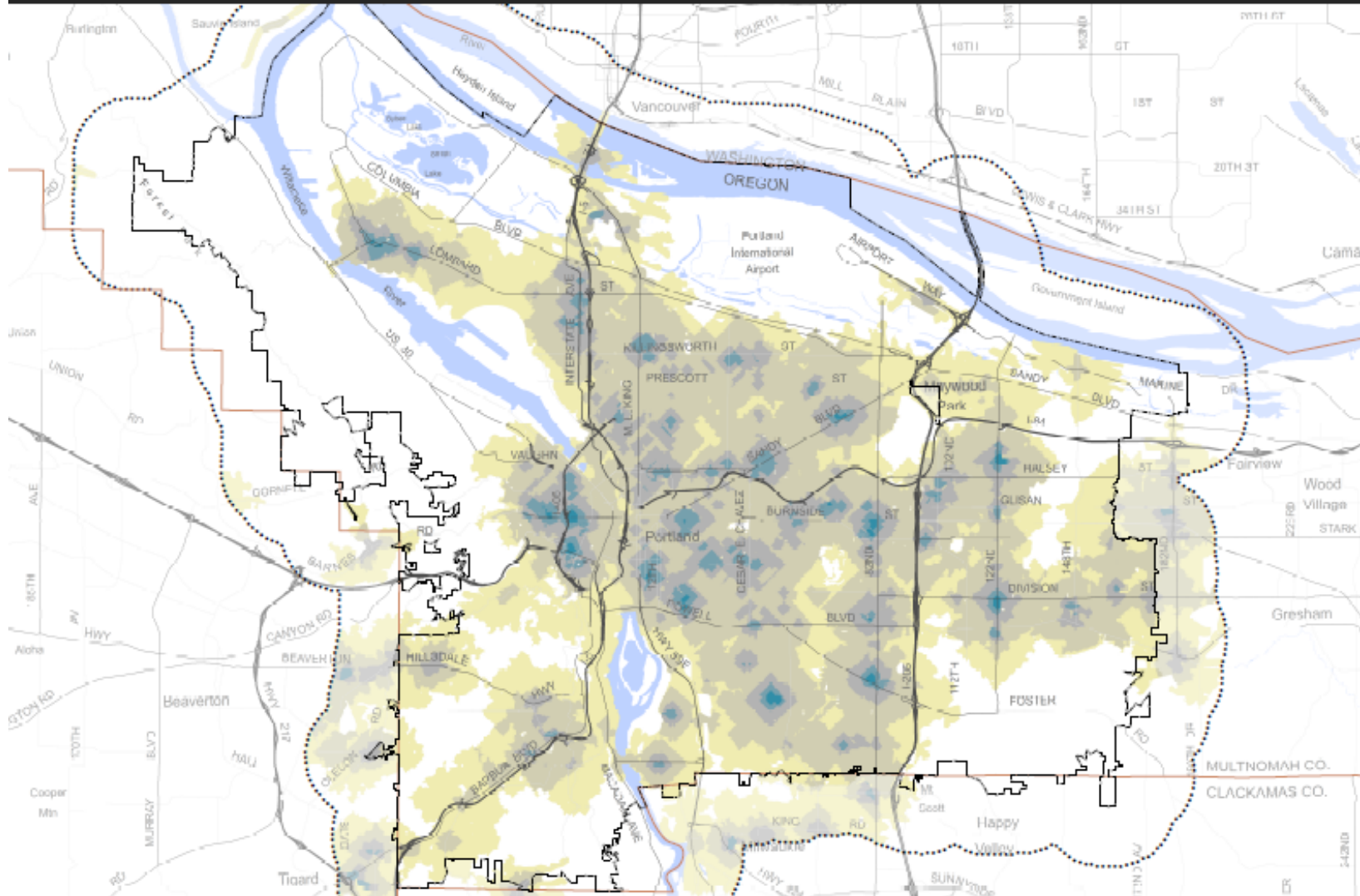


City of Portland, Oregon
 Charlie Hales, Mayor // Susan Anderson, Director



Complete Neighborhoods--Draft Map

Food Access Indicators



Legend

- City Boundary
- County Boundaries
- 1 Mile Data Collection Extent

Total Food Score

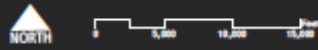
- Low
- Medium
- High

Proximity Index:
 1/8 mile (4 pts.)
 1/4 mile (3 pts.)
 1/2 mile (2 pts.)
 1 mile (1 pt.)

Scoring Weights:
 Large Chain Grocery Stores (60%)
 Independent, Ethnic, Produce Stores (30%)
 Farmer's Markets (Seasonal) (10%)

September 25th, 2013
 City of Portland, Oregon // Bureau of Planning & Sustainability // Geographic Information System

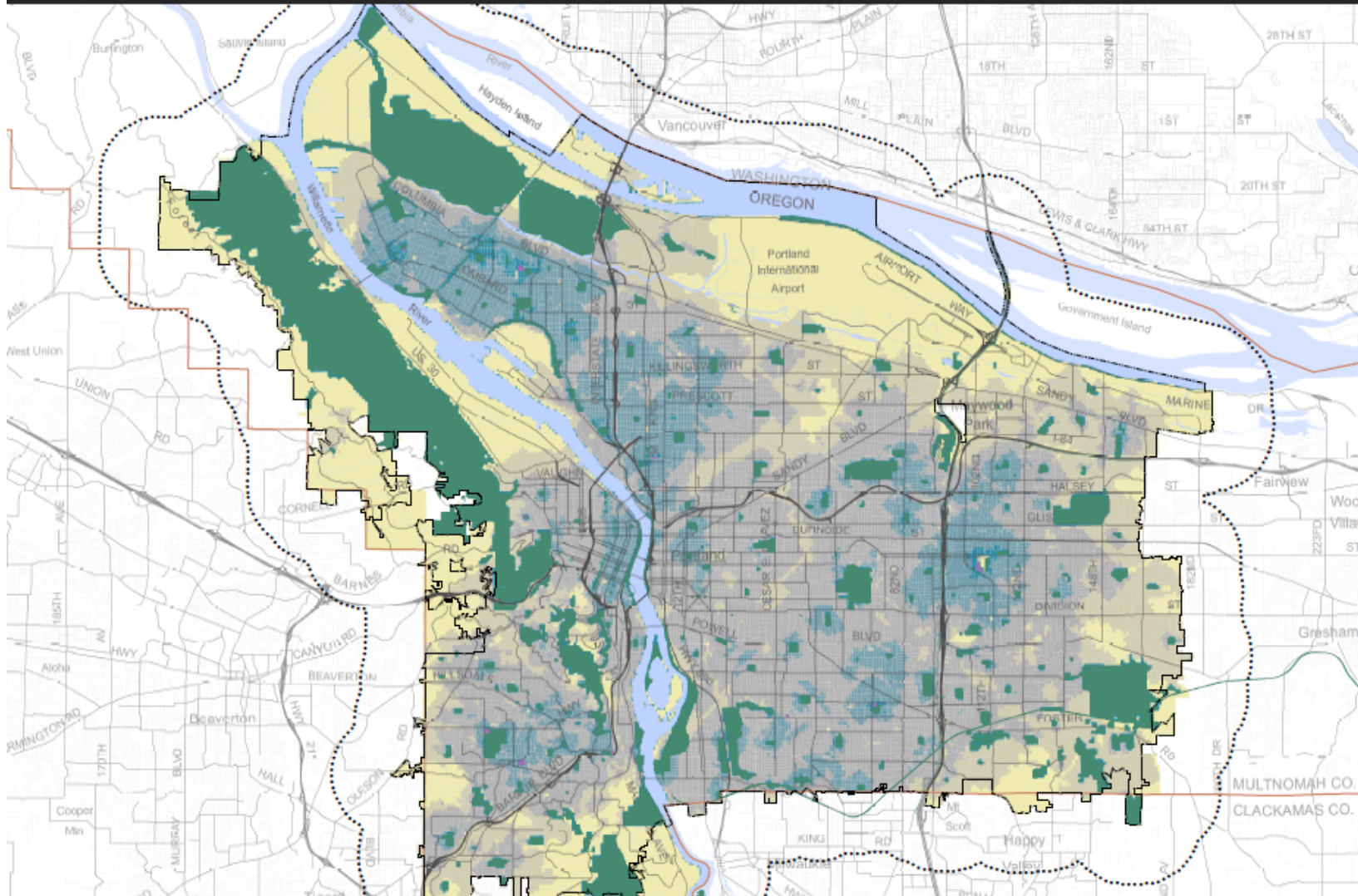
The information on this map was derived from City of Portland GIS datasets. Due to issues in the creation of this map, it is provided "as is." The City of Portland cannot accept any responsibility for errors, omissions or qualified accuracy.



Bureau of Planning and Sustainability
 Innovation. Collaboration. Practical Solutions.

City of Portland, Oregon
 Charlie Hales, Mayor // Susan Anderson, Director

Complete Neighborhoods--Draft Map



Recreation Access Indicators

Legend

- City Boundary
- County Boundaries
- Parks
- Community Centers
- 1 Mile Data Collection Extent

Recreation Score

- 0 - 20
- 21 - 40
- 41 - 60
- 61 - 80
- 81 - 100

Proximity Index:

- 1/8 mile (6 pts.)
- 1/4 mile (5 pts.)
- 1/2 mile (4 pts.)
- 1 mile (3 pts.)
- 2 miles (2 pt.) (Community Centers)
- 3 miles (1 pt.) (Community Centers)

Scoring Weights:

- Parks greater than 4 acres or larger (x3)
- Parks 1/2-4 acres (x2)
- Natural Areas, Golf Course, Museum (x1)
- Community Centers - large (x3)
- Community Centers - med (x2)
- Community Centers - small (x1)



Bureau of Planning and Sustainability
Innovation. Collaboration. Practical Solutions.



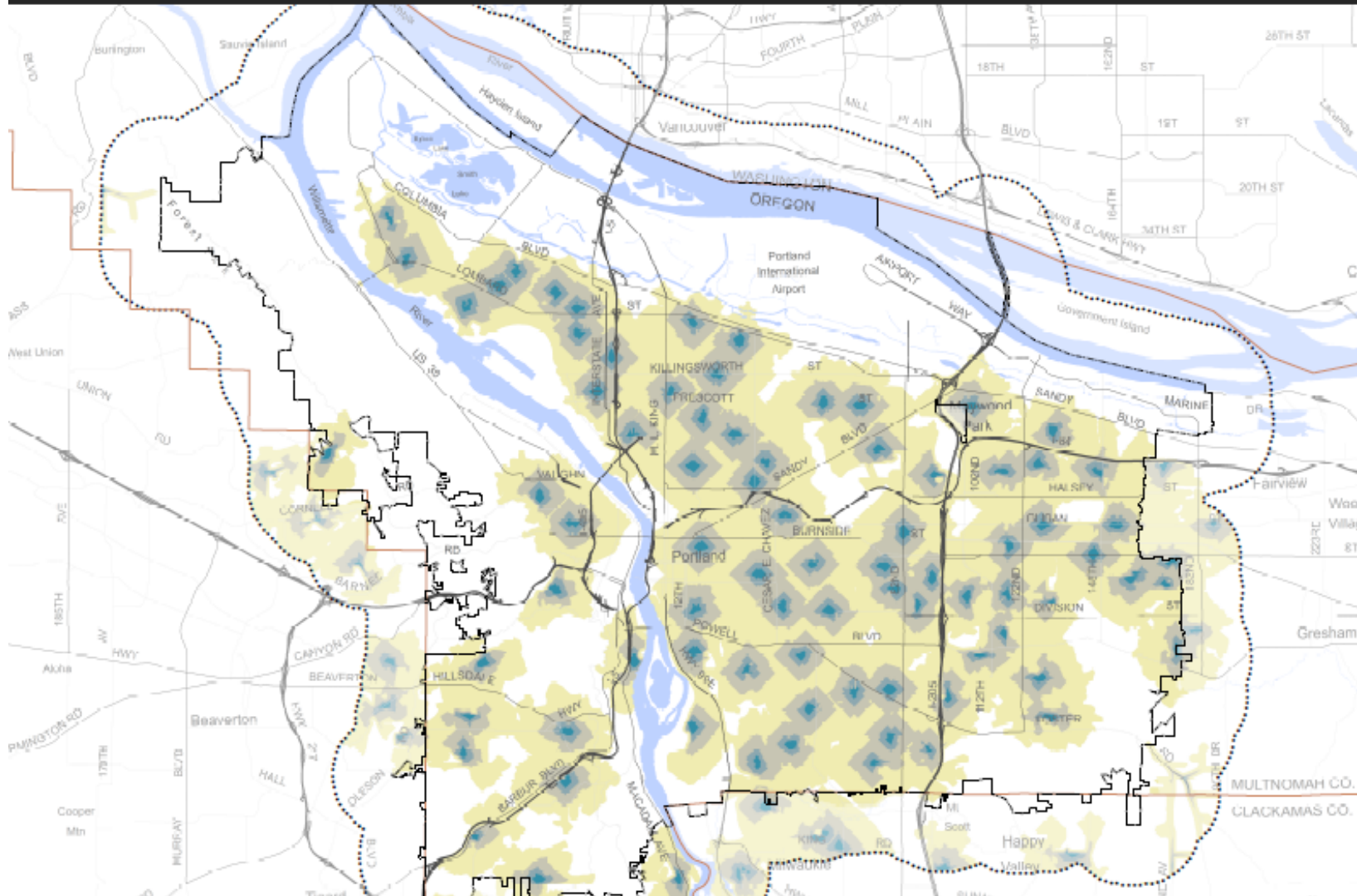
City of Portland, Oregon
Charlie Hahn, Mayor - Susan Anderson, Director

July 22, 2013
City of Portland, Oregon // Bureau of Planning & Sustainability // Geographic Information System

The information on this map was derived from City of Portland GIS databases. Care was taken to ensure the accuracy of this map but it is provided "as is". The City of Portland cannot accept any responsibility for errors, omissions or professional services.



Complete Neighborhoods--Draft Map



Elementary School Indicators

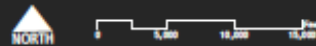
Legend

- City Boundary
- County Boundaries
- 1 Mile Data Collection Extent
- School Score**
- 1 mile
- 1/2 mile
- 1/4 mile
- 1/8 mile

- Proximity Index:**
 1/8 mile (4 pts.)
 1/4 mile (3 pts.)
 1/2 mile (2 pts.)
 1 mile (1 pt.)
- Public Elementary Schools**
 No Charters

September 25th, 2013
 City of Portland, Oregon // Bureau of Planning & Sustainability // Geographic Information System

The information on this map was derived from City of Portland GIS datasets. Users are advised to verify the accuracy of the map data in its intended use. The City of Portland cannot accept any responsibility for errors, omissions or professional services.



Bureau of Planning and Sustainability
 Innovation. Collaboration. Practical Solutions.



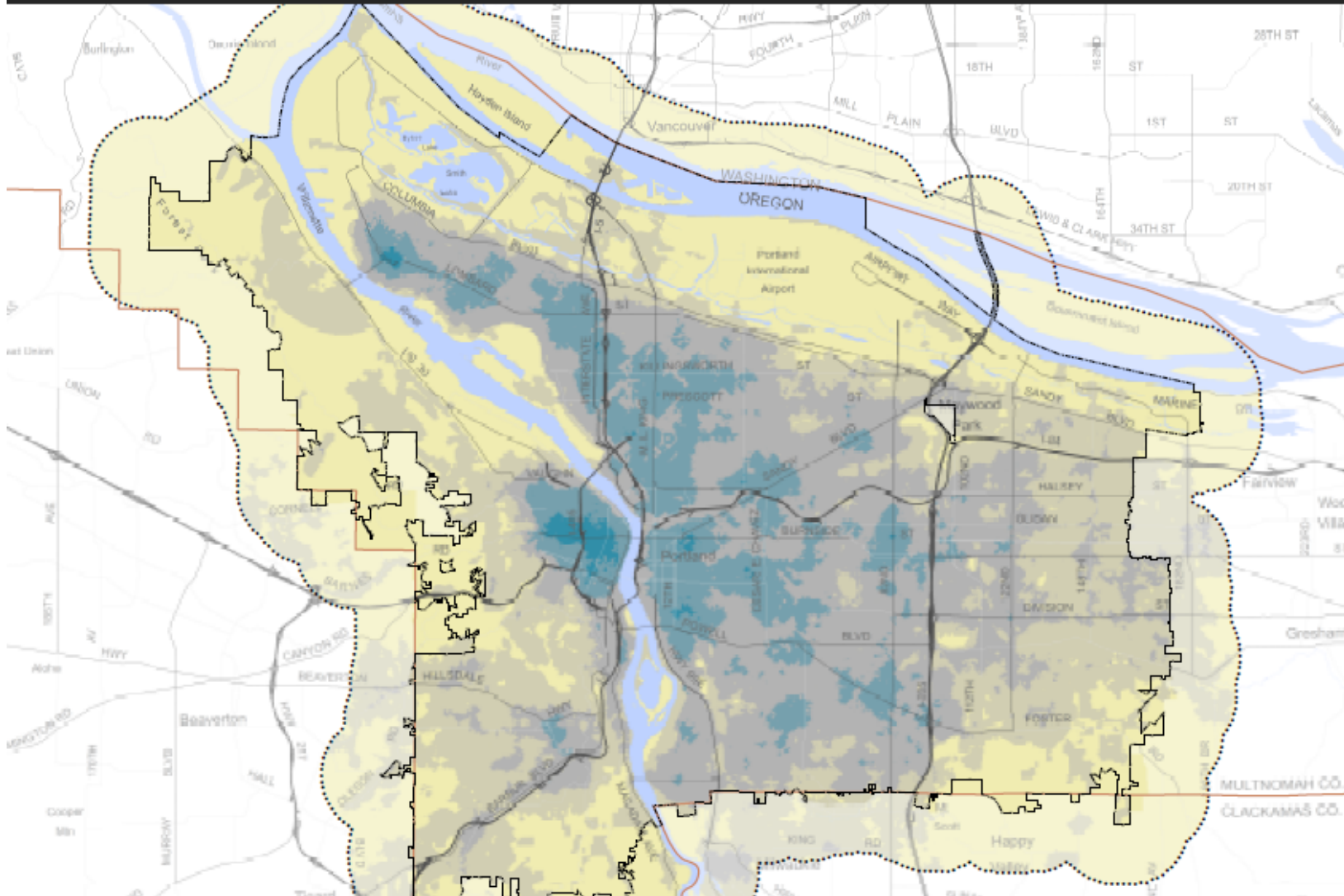
City of Portland, Oregon
 Charly Hales, Mayor // Susan Anderson, Director



Bureau of Planning and Sustainability
 Innovation. Collaboration. Practical Solutions.



Complete Neighborhoods--Draft Map



Combined Indicators

Legend

- City Boundary
- County Boundaries
- ⋯ 1 Mile Data Collection Extent

Total Score

- Low
- Medium
- High

Indicators:

- Bicycle Access and Connectivity (1/7)
- Food Access (1/7)
- Transit Access (1/7)
- Recreation Access (1/7)
- Elementary School Access (1/7)
- Sidewalk Density (1/7)
- Commercial Services (1/7)



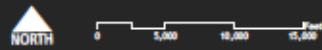
Bureau of Planning and Sustainability
Innovation. Collaboration. Practical Solutions.



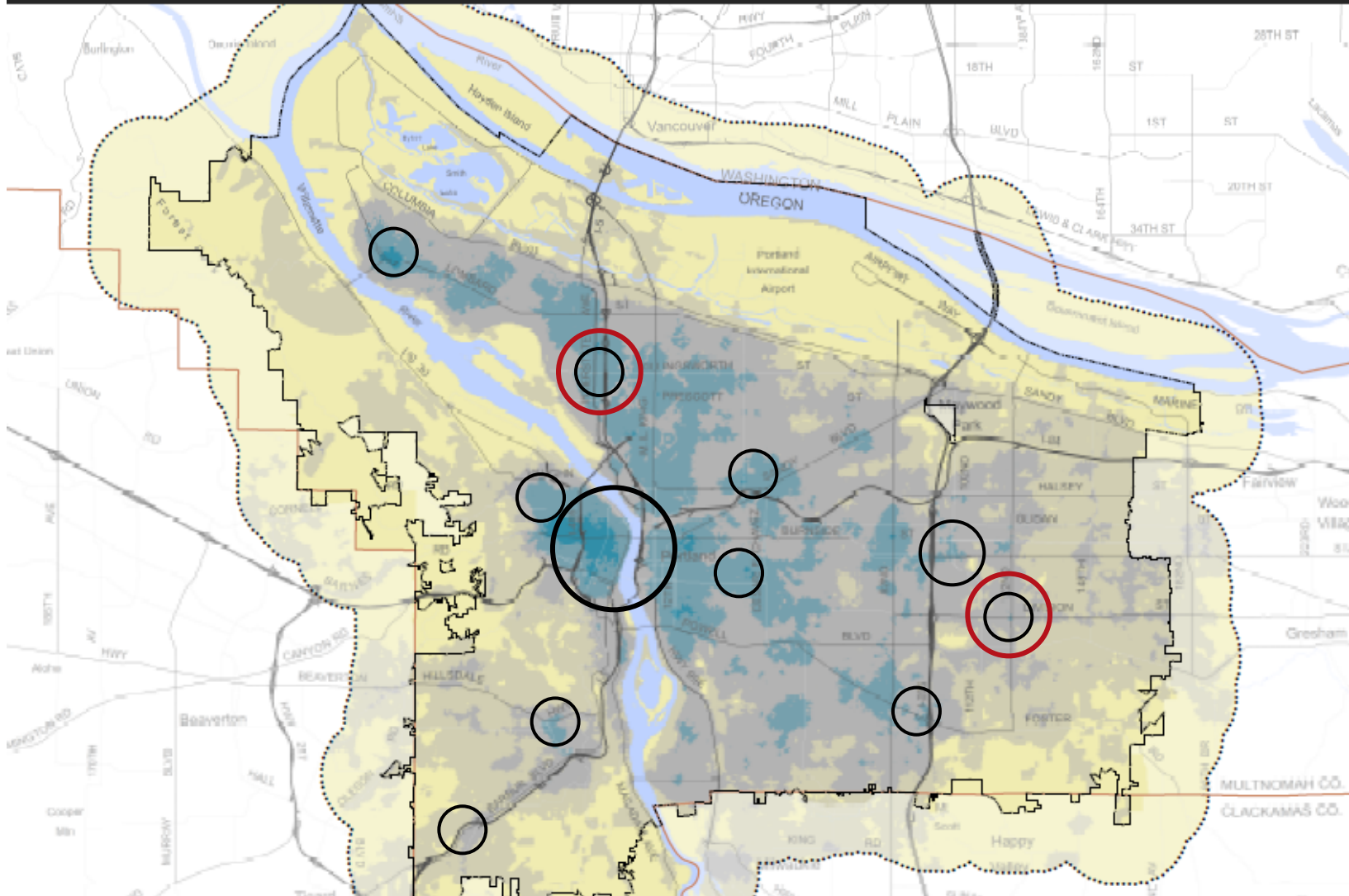
City of Portland, Oregon
Charles Parks, Mayor • Scott Anderson, Director

September 20th, 2013
City of Portland, Oregon // Bureau of Planning & Sustainability // Geographic Information System

The information on this map was derived from City of Portland GIS databases. Care was taken to the creation of this map but it is provided "as is". The City of Portland cannot accept any responsibility for errors, omissions or professional liability.



Complete Neighborhoods--Draft Map



Combined Indicators

Legend

- City Boundary
- County Boundaries
- 1 Mile Data Collection Extent

Total Score

- Low
- Medium
- High

Indicators:

- Bicycle Access and Connectivity (1/7)
- Food Access (1/7)
- Transit Access (1/7)
- Recreation Access (1/7)
- Elementary School Access (1/7)
- Sidewalk Density (1/7)
- Commercial Services (1/7)



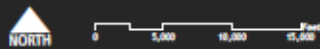
Bureau of Planning and Sustainability
Innovation. Collaboration. Practical Solutions.



City of Portland, Oregon
Charles Parks, Mayor • Scott Anderson, Director

September 20th, 2013
City of Portland, Oregon // Bureau of Planning & Sustainability // Geographic Information System

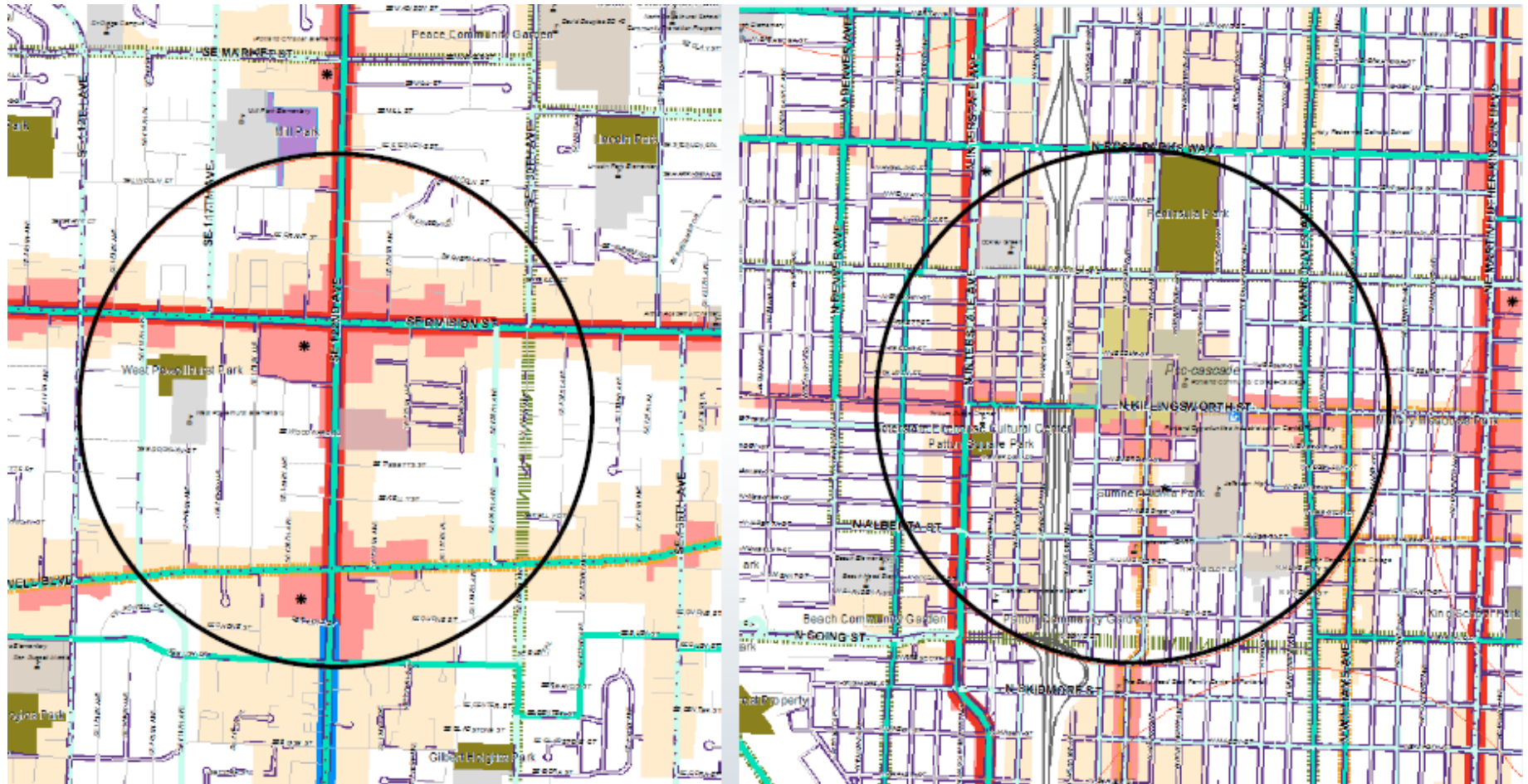
The information on this map was derived from City of Portland GIS datasets. Care was taken to the creation of this map but it is provided "as is". The City of Portland cannot accept any responsibility for errors, omissions or professional liability.



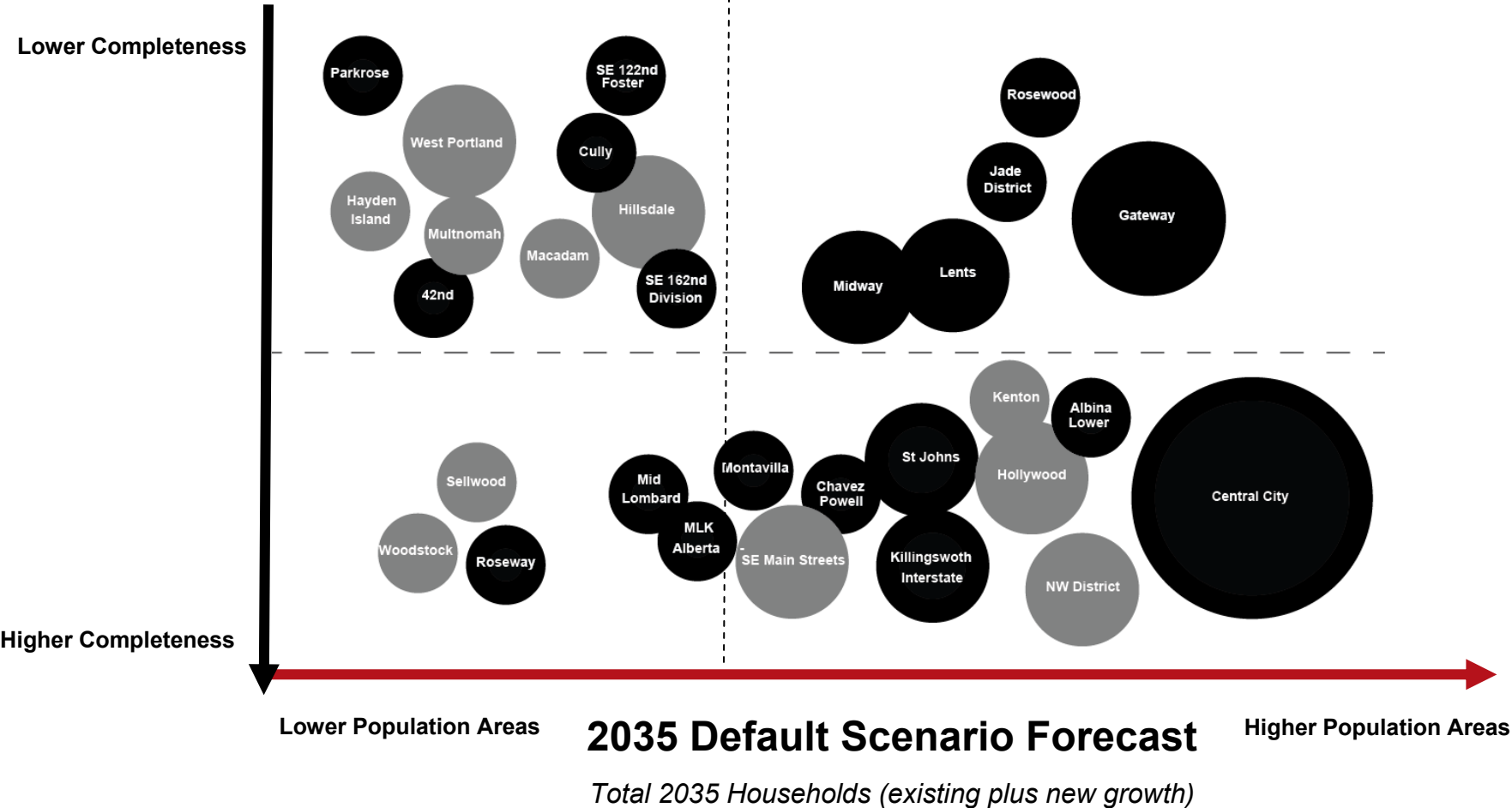
Bureau of Planning and Sustainability
Innovation. Collaboration. Practical Solutions.



Drill down to examine Midway and Killingsworth/Interstate Town Centers



Draft Relative Completeness and 2035 Forecast



*Size of circle corresponds to Center Type: Regional, Town, and Neighborhood
 *Black Circles indicate areas that have concentrations of vulnerable populations as measured by high % of renters, high % communities of color, low median income, and/or low education levels

Next steps

- Modeling growth and CSP investments to evaluate performance
- Further refinement of methodology
- Centers and Corridors Assessments

