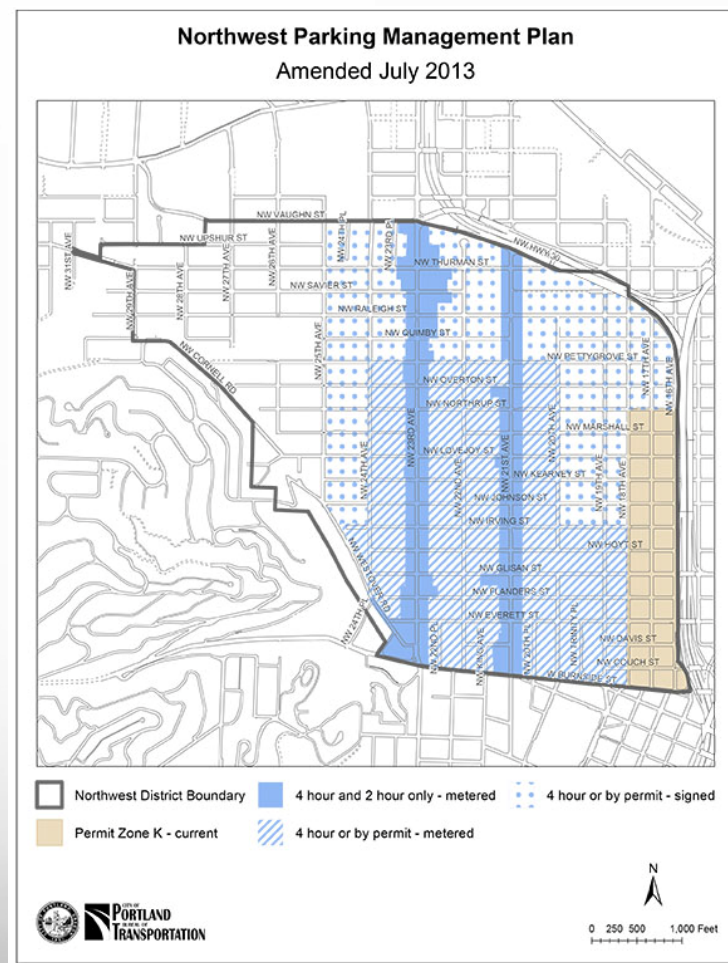


Proposed Modifications to the NW District Parking Plan



Implementation

- Implement the plan fully in **January, 2014**



Parking Format and Base Time Standards

- Four-hour base time stay with limited high-turnover parking
- Meters may be plugged
- Extend paid parking on NW 21st and NW 23rd from NW Pettygrove to NW Vaughn



Permit Program

- Implement from W Burnside to NW Vaughn and NW 16th to NW 25th
- By request, implement west of NW 25th
- Public, religious and community institutions, medical facilities and businesses may purchase permit books



Event-day Overlay

- Meter the entire event district from W Burnside St to NW Irving St.



TMA


- Change the TMA to a Stakeholder Advisory Group (SAG)
- SAG appointed by City Commissioner
- SAG will serve as an advisory group to PBOT's Director, and to the parking program



Demand Management



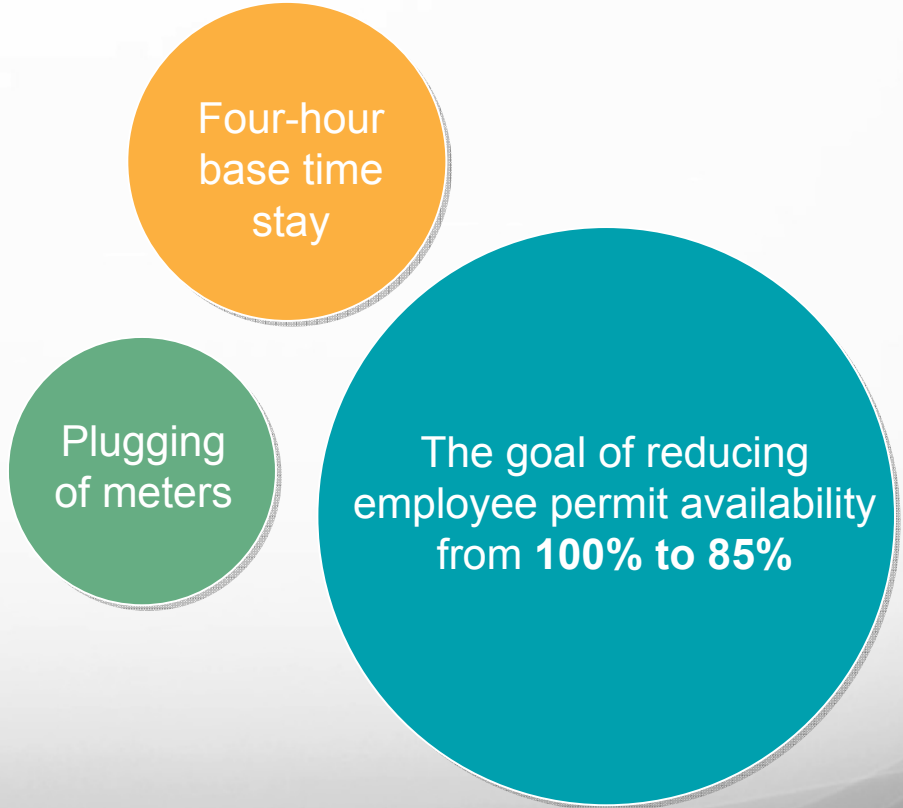
Establish a parking demand management program



Reduce the percentage of employee permits from an aggregated 100% to 85% within five years of implementation

Review for Effectiveness

Within **one year** after implementation review the effectiveness of the following items:



Four-hour
base time
stay

Plugging
of meters

The goal of reducing
employee permit availability
from **100% to 85%**



www.portlandoregon.gov/transportation

www.facebook.com/pbotinfo

www.twitter.com/@PBOTinfo