

*Investing in our future*  
**portland  
children's  
levy**

## **Portland Children's Levy**

**Grant Renewal**  
**Portland City Council**  
**June 5th, 2013**



## **Council Request:**

Approve the extension of current grants for the final year of the existing levy

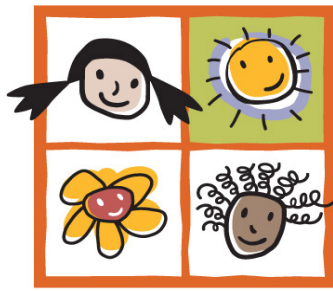


*Investing in our future*

portland  
children's  
levy

186071

- Portland Children's Levy created by voters in 2002 - overwhelmingly renewed 2008, 2013.
- 2013 renewal includes a new focus on hunger prevention.
- Levy generates an average of \$11 million annually
- Invests in 65 programs reaching more than 10,000 children and families.



Investing in our future

portland  
children's  
levy

186071

## ■ **Early Childhood**

*Children enter kindergarten prepared to succeed.*

- Early childhood education and intervention
- Parenting education
- Affordable, high-quality childcare

## ■ **After School & Mentoring**

*Students stay engaged in school and safe after school.*

- Quality programs to promote academic achievement in core subject areas and music, art and athletics
- Positive and consistent adult and peer role models
- Tutoring, homework assistance, community service and college prep activities

## ■ **Child Abuse Prevention & Intervention**

*Stressed families most at risk receive support and intervention services.*

- Intensive case management, counseling and therapy

## ■ **Respite care**

- Parenting education, family support

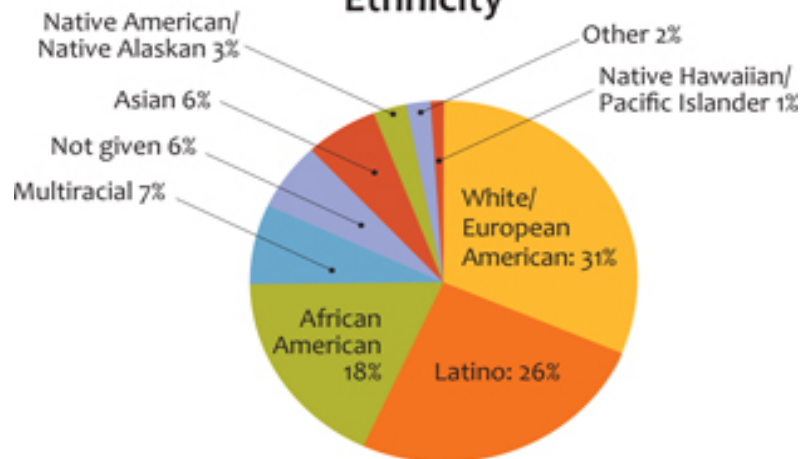
## ■ **Foster Care**

*Ensuring kids in foster care succeed.*

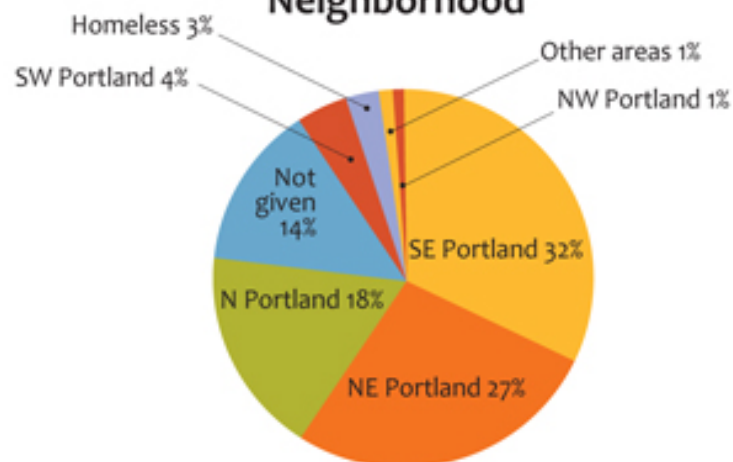
- Placement stability
- Shortened length of time in foster care
- Educational support networks, especially during school transitions
- Mentoring, enrichment, mental health services

# A Snapshot of Who We Serve:

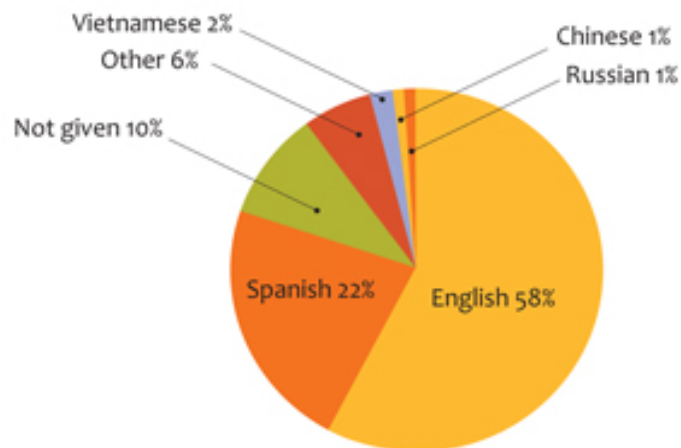
## Ethnicity



## Neighborhood

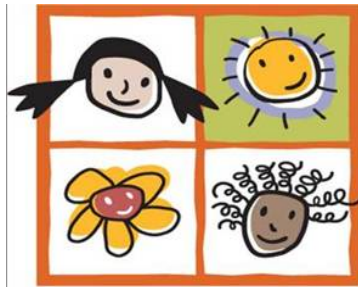


## Primary Language Spoken at Home



# Using Tax Dollars Wisely:

- Independently audited annually.
- Operates with a 5-percent admin cap.
- 95 cents of every dollar goes to proven programs that achieve positive results for children.
- All programs are monitored by staff and subject to regular site visits and performance assessments.
- Grantees selected through a competitive funding process.
- Five-member Allocation Committee meets publicly to make all funding decisions.



*Investing in our future*  
**portland  
children's  
levy**

186071





Dots on the map represent Levy-funded organization administrative offices and the 62 schools at which a majority of our after-school and mentoring programs occur. Not shown on the map are:

186071

- 120-plus childcare providers at community preschools and family- and center-based sites
- 36 Head Start and Early Head Start sites
- Hundreds of children served in their homes by home-based services

- Early Childhood
- After School
- Mentoring
- After School/Mentoring
- Child Abuse Prevention/Intervention
- Foster Care
- Multiservice (Organization provides programming in more than one funding area)







## **Allocation Committee**

- City Commissioner Dan Saltzman, Chair
- Mult. Co. Commissioner Deborah Kafoury
- City-appointed citizen representative: Julie S. Young
- County-appointed citizen representative: vacant (replacement in process)
- Portland Business Alliance representative: Mitch Hornecker



## Preview of the Levy Renewal

- Voters renewed the Children's Levy on May 21, 2013
- Funding for the renewed Levy begins on July 1, 2014
- Levy renewal added new focus on hunger prevention.

# Outreach & Funding Timeline

- Gather community input: June – Sept. 2013.
- Analyze & report input to Allocation Committee: Oct. 2013.
- Integrate community input, research and performance data to create recommendations for funding priorities: Oct. –Nov. 2013.
- Finalize funding application: Dec. 2013.
- Publish “Requests for Investment”: Jan. 2014.
- Funding decisions made by June 2014.