



Regional Arts & Culture Council

2012 YEAR IN REVIEW

2012 YEAR IN REVIEW

HIGHLIGHTS ▲ P. 4

ARTS EDUCATION ▲ P. 8

ADVOCACY ▲ P. 10

GRANTS ▲ P. 12

EQUITY & OUTREACH ▲ P. 14

PUBLIC ART ▲ P. 16

FINANCES ▲ P. 18

CONTRIBUTIONS P. 19

BOARD MEMBERS AND STAFF P. 20

ARTISTS & OTHER PARTNERS P. 20

VOLUNTEERS P. 22



**Regional Arts &
Culture Council**

411 NW Park Avenue, Suite 101
Portland, OR 97209-3356
503.823.5111 • 503.823.5432 fax
info@racc.org • racc.org

OUR ROLE

The Regional Arts & Culture Council (RACC) is an independent, not-for-profit 501(c)(3) arts service organization that works to integrate arts and culture in all aspects of community life. RACC's service area includes more than 1.5 million residents, 250 not-for-profit arts and culture organizations and countless artists of every discipline in the Portland, Oregon, metropolitan region including Clackamas, Multnomah, and Washington Counties.

Welcome

Welcome to the Regional Arts & Culture Council's Annual Report for 2012. It has been a remarkable year with challenges and opportunities large and small, and these pages document our many accomplishments in helping the arts thrive in our region.

This was a year of intense advocacy work with our colleagues in the Portland Mayor's office, the Creative Advocacy Network and thousands of volunteers. More than 62% of Portland voters approved a new Arts Education and Access Fund that will ensure certified art and music teachers for every elementary school student in Portland schools, strengthen arts organizations, and provide new grants to help schools and nonprofits serve new populations. RACC stands ready to help other municipalities in the region achieve similar groundbreaking progress.

As our population becomes increasingly diverse, bringing cultural and artistic richness from many corners of the globe, RACC is committed to celebrating this growth and making the arts accessible to all citizens. We have been diversifying our board, staff, panels and presenters, and we urge the arts organizations we fund to plot their own course of progress reaching new audiences. The entire region will benefit from our collective efforts.

On behalf of the staff and board, thank you everyone who contributed to the vitality, creativity and livability of the Portland region in 2012. We look forward to advancing all of this work in 2013, and we feel very fortunate to live in this extraordinary time and place!



Photo by Brian Foulkes

Lina Garcia Seabold
Board Chair

Eloise Damrosch
Executive Director

January 2013



THE ARTS EDUCATION & ACCESS FUND

The Votes are in

ON NOVEMBER 6, Portlanders approved Measure 26-146, the Arts Education & Access Fund, with 62% of voters supporting a permanent, dedicated funding source for arts education and arts organizations. Given the belt-tightening of the current economy, it may seem an unlikely time to pass a new tax, but Jessica Jarratt Miller of the Creative Advocacy Network (the organization that shepherded the measure to the ballot) says that “Portland residents recognize the value of investing in art and music teachers, and they want more access to arts activities throughout the city.”

Starting with the 2012 tax year, all income-earning Portland adults living above the poverty level will pay \$35 as a result of the measure. Over half of the proceeds (an estimated \$6.8 million) will go to the six school districts that operate in the city, to hire art and music teachers for K-5 students, restoring arts learning programs that have fallen under the ax of state and local budget cuts. RACC will also play a new role in coordinating arts education in public schools.

The rest of the funds (about \$5 million) will be distributed by RACC to nonprofit organizations and schools, helping them increase access not only for students but for all Portlanders, with a particular focus on communities that have been underserved in the past.

When it comes to distributing grants, RACC has strong systems in place. An added challenge will be data collection, as arts organizations are called upon to articulate the benefits they’re providing to the community, and RACC must convey this information to the city council and a new citizen oversight commit-



Top: Peter Frajola of the Oregon Symphony and musician Thomas Lauderdale at a rally at City Hall to support Measure 26-146. Above: Arts leaders show their support during the morning commute. Photos courtesy of the Creative Advocacy Network.

tee. (The measure also calls for audits of both RACC and school district expenditures.)

RACC’s Jeff Hawthorne expects that many arts organizations are plenty eager to engage underserved pockets of the community; they simply need resources to do so. The ultimate goal, he says, is for people throughout the city to “feel more connected to their community through the arts.”

While some local media and other vocal opponents argued against the new tax, years of community input and engagement by the Creative Advocacy Network ensured a solid win. The hefty margin of victory, Jarratt Miller says, “reaffirms what Portlanders have been saying all along: the arts are an essential component of a complete education for our children, and every citizen should have access to a Portland’s creative and cultural riches.”

INTERACTIVE WORKSHOPS

RACC Puts Practical Skills in Hand

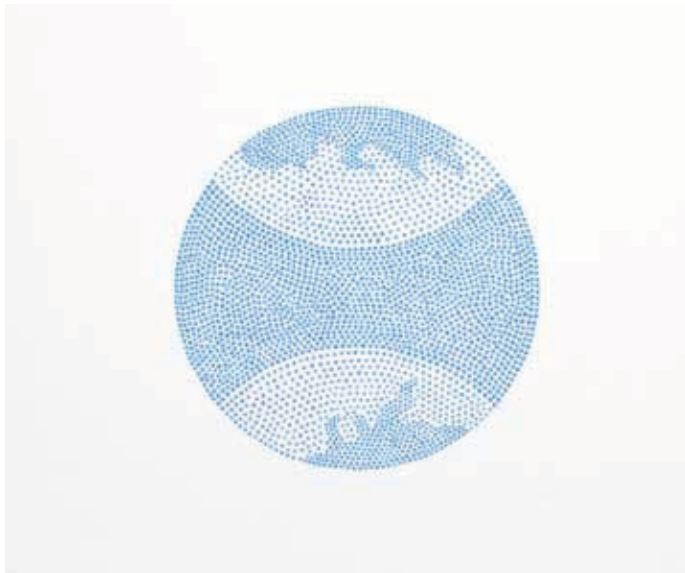
IN 2012, RACC brought artists and others together to share tools that can widen audiences, hone business strategies, and open up new funding sources.

Artist and performer Gigi Rosenberg hosted workshops in Portland and Oregon City on effective communication, leaving participants with easy-to-implement ideas on how simple conversations can help take their work to the next level. Write Around Portland cofounder Ben Moorad led a hands-on grant-writing seminar that showed how the quest for funding can also be part of the artistic process. One session from Sound Advice attorney Peter Vaughan Shaver gave a rundown on copyrights and contracts in the music industry, and another featured a lawyer, booker, and musician on a panel to discuss moving a music career forward. In another sold-out workshop, marketing consultant Elgé Premeau shared strategies for getting the most out of online tools Twitter, Facebook, and more.

Many of the popular workshops, which cost between \$25 and \$35, will repeat in 2013, and some sessions are already selling out.



Ben Moorad presenting a 2012 RACC Workshop, photo by Tonisha Toler



PORTABLE WORKS

Collection Adds Artists

MANY ARTISTS have no plans to paint an outdoor mural or see a permanent sculpture through the fabrication process. But they can still join the public art collection—and the conversation—as part of the Portable Works Collection. In March, RACC announced the purchase of 52 works by 32 artists, bringing the collection to more than 1,000 pieces. The artworks are displayed on a rotating basis in publicly accessible buildings throughout Portland and Multnomah County.

Additions to the collection are made only when a significant amount of money has accumulated from city and county contributions. The recent round of purchases totaled \$57,100 and covered subjects as local as Hampton Rodriguez's paintings of Alberta Street, and as distant as Corey Arnold's photographs of fishing boats on the North Sea, or Surabhi Ghosh's planetary Satellite paintings. Rodriguez, Arnold, Ghosh, and the other artists included in this round of acquisitions all had one thing in common, though: All of them are new to the Portable Works. In an effort to expand both the diversity of artists and the subject matter in the collection, only artists not yet represented were eligible to submit work.

Artwork from the Portable Works Collection: Top: Surabhi Ghosh's *Satellite*; Left: Corey Arnold's *The Beam Trawl, North Sea, Netherlands*

FELLOWSHIP AWARD

RACC Fellow Reaches into His Own Past

LARRY JOHNSON brings history to life with Museum Media Inc., which offers AV production and design for exhibits at museums across the country. RACC's 2012 Fellow in Media Arts set off on a more personal path with *Stuff*, a film about sorting through his late father's storage unit.

"It was brilliantly made," says grants officer Helen Daltoso, "and it turned out more personal than I think he ever anticipated." His next project, tentatively titled *Ghost Money*, focuses on his experience in Vietnam as an entertainment booker for the military.

RACC's fellowship award, which cycles through literary, performing, visual, and media arts each year and is open to local artists who have worked in their field for at least ten years, comes with a cash award of \$20,000. Johnson has already used some of the funds to travel to Vietnam, shooting current scenes to go with his own archival footage.



Larry Johnson, joined by Carolyn Anderson and family and friends, received the Fellowship in Media Arts award in the fall of 2012. Photo by Bill Barry



From Top: Antwoine Thomas's *The Eyes of All* mural in SE Portland; Ron Barron's *You Are Here* at Jeld-Wen Field, photo by Dave Elkin, Green Works

NEW PUBLIC ART

Expanding the Collection

THE MONUMENTAL sculptures along the new east-side streetcar line have dominated recent discussion about Portland's public art collection, but they weren't the only new entries in the region's free indoor-outdoor museum.

Public art throughout Portland and Multnomah County continues to diversify, not only in terms of the artists but also the styles, mediums, and locations of the works. One of six murals funded in 2012, Antwoine Thomas's energetic *The Eyes of All* at SE 162nd Avenue and Stark Street, for example, is far from the established cultural zones of downtown Portland. Nearly 100 community members of all ages helped with the project.

Since May 2012, artists Carl Diehl, Ariana Jacob, Mack McFarland and Jeffrey Richardson have been leading video production workshops with clients at Bud Clark Commons in Old Town. The BCC-TV project might be physically located downtown near public-art-heavy bus and MAX lines, but instead of being housed in a major arts institution it's based at a social service center for the homeless and those transitioning out of homelessness. This partnership with Home Forward and Transition Projects, Inc. exemplifies a major goal of the program and its collection: to represent and engage the entire community, according to public art manager Peggy Kendellen.

Another group that might be overlooked by traditional arts programming: sports fans. Last March, Timbers supporters got their first look at sculptor Ron Barron's cast-bronze log round, *You Are Here*, at Jeld-Wen Field. The beloved piece is nine feet in diameter and studded with allusions to the history of the stadium and the surrounding Goose Hollow neighborhood.



PARTY IN THE NAME OF ART

Party People

IN DECEMBER, RACC threw its first-ever signature fundraising event, “pARTy in the Name of Art,” honoring and thanking the man many partygoers called “the greatest arts mayor we’ve ever had.” With only weeks left in his tenure, Sam Adams was at times tossed onto a stage that also featured Storm Large, Julianne Johnson-Weiss, Grupo Condor, and performers from the Circus Project, BodyVox, and PHAME Academy, among many others. Artisan eats, pop-up performances, local celebs and a DJ’ed dance party rounded out an evening of entertainment that only RACC could convene.

Held at YU Contemporary on the inner east side, the fete was also a benefit for The Right Brain Initiative and Work for Art. Event sponsors and the 750 attendees raised \$18,000 for the two programs. “RACC continues to explore ways to celebrate and support the local arts community,” says Jeff Hawthorne, RACC’s director of community affairs. “This event provided us a great template if we’d like to do something similar in the future.”



Clockwise from Upper Left: Sam Adams and Peter Zuckerman enjoy the festivities; artists and guests paint a 24’ long mural; Julianne Johnson serenades the mayor. Photos by Dodge & Burn Studios

PORTLAND BUILDING

Tents and Talks Fill Installation Space

PORTLANDIA LOOMS outside, but art doesn’t stop at the door of the Portland Building. Anyone popping in to pay a water bill might spot the installation space just off of the lobby. Submissions are sought each fall for works to fill the 13-by-8-foot space for a month at a time.

Jodie Alexi Cavalier’s minimalist sculpture was a distillation of the Portland Building itself, while Christy Hawkins’s *Outdoors In* eschewed the cityscape in favor of a plush quilted camping scene meant to inspire visitors to find a little nature of their own. Hawkins and Cavalier were among three artists selected last winter from 31 applicants in the student category, while another six pieces were drawn from 33 proposals in the professional artist category. The space became a recording studio for Stephen Kurowski and Marina Tait’s *Project Everyone*, which invited participants to answer a series of eight questions in videos that then became part of the show.



Outdoors In, an installation by Christy Hawkins

The Right Brain Initiative's training incites inspired teaching

IN 2012, a record 14 new schools joined The Right Brain Initiative, bringing the total served by RACC's five-year-old arts education program to more than 11,000 students at 44 schools from six districts across the region. Right Brain teaching artists excite these students with classroom experiences that integrate the arts with other subjects from their curriculum.

Professional development for teachers, principals and teaching artists is key to Right Brain's long-term vision of change. By giving educators the tools to facilitate the arts in their own classrooms, they can build a culture for creativity in their school—every day of the week. Multiply the number of students each teacher serves by the number of years they'll teach, and the total sum of students this impacts is staggering.

"Every year, we can only add a handful of new teachers to our professional development program from each school, but they go back and share Right Brain strategies at their schools, so that over time, whether they've been through our training or not, teachers are beginning to adopt the approach," says program manager Marna Stalcup. "It's beginning to ripple and spiral out."

Eventually, teachers at all partner schools will participate in Right Brain's training. The professional development series, which includes continuing education credit through Portland State University, is a 42-hour, three-part sequence designed in partnership with Deborah Brzoska, a teaching artist with The Kennedy Center in Washington, DC who facilitates all of the sessions. The first stage lays the foundation for arts integration, which spreads across all subjects using the arts to engage students in higher-order thinking. (In a Hillsboro school, for example, a dance artist worked with students to create dances inspired by the water cycle, an idea their teacher carried back to the science classroom.) The second year of the sequence takes teachers, artists, and administrators even deeper into the practice, while

the third year focuses on assessment, helping educators respond to students' needs and make adjustments that enhance learning. All participants take away a ring of strategy cards, an in-hand set of ideas that can be put into practice in the classroom. The strategies tie in with the Common Core, a set of standards adopted by 47 states that will be fully implemented in Oregon by 2014-15.

A May 2012 survey revealed that 100 percent of teachers who have participated in the professional development program have used Right Brain strategies in their classrooms, with 64 percent using them on a regular basis (more than six times in the past three months). The longer schools have been involved with the program, the more often strategies were implemented, but the benefits begin right away. Stalcup recalls a story from a newly enrolled school: "The teacher who had been at professional development had shared one of the strategies, and everybody wanted strategy cards. Everybody was starting to use them already, and they haven't even had an artist walk into a classroom! We're seeing how this is really igniting the excitement among teachers and reinvigorating their work with children. It's sparking their imaginations as much as it is the kids'."

Learning opportunities aren't limited to partner schools, though. Right Brain's "Imagine This!" summer seminar is open to anyone and draws educators from across the country. Presenters have included Rae Takemoto, an arts integration specialist from Hawaii, and Frances Bronet, dean of the University of Oregon's School of Architecture and Allied Arts, who used a design challenge to simulate students' experiences and show the value of open-ended, ambiguous assignments as vital learning tools.

Like Bronet's activity and the Hillsboro team's water dance, all of Right Brain's professional development offerings practice what they preach: "It's not a sit-down-and-talk-about-it experience," Stalcup says. "It's a get-up-and-do-it experience." ❁

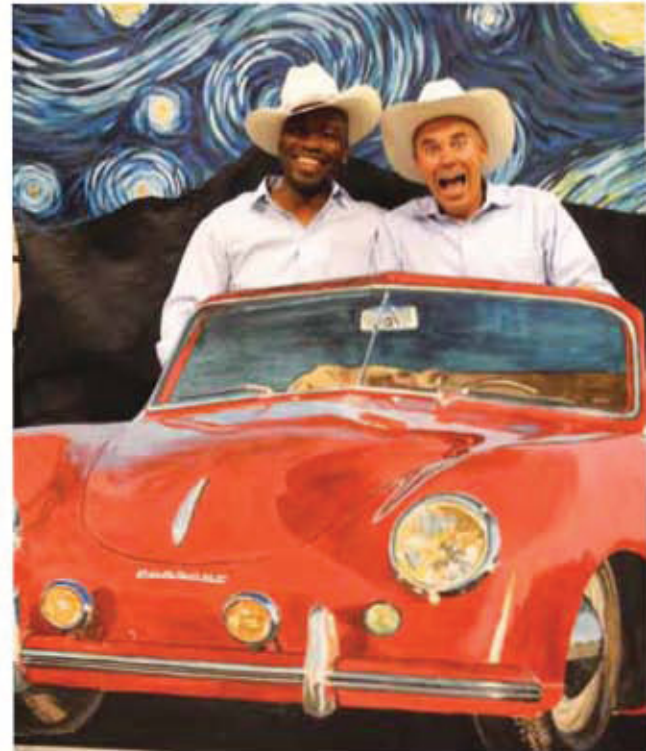
10,376
total students
served in 2011-2012

616
number of teachers and
licensed staff supported

54
teaching artists


**therightbrain
initiative.org**





Work for Art keeps working—and growing!

FROM THE CRAYONS that come with a kids meal to the radio play-lists you'll hear in each store, local Burgerville restaurants feel a little artsier than other fast-food outlets. That's no fluke. In fact, the company's cashiers and milkshake makers and sustainability planners are an arts-supporting lot, and have helped Burgerville achieve the highest number of employee donors of any Work for Art campaign.

Work for Art is RACC's workplace giving program that engages 73 companies across the region, giving employees an opportunity to support arts and culture, most commonly through their paychecks. Burgerville's president and CEO, Jeff Harvey, is leading the charge as the honorary chair of the seventh annual campaign, which runs through June, 2013.

Last year's honorary chair, PGE Foundation president Carole Morse, helped Work for Art raise a record-setting total of \$823,693. Portland General Electric remains a perennial top campaign, along with NW Natural, The Standard, and OHSU—all of which maintain an active presence in the arts and culture community. NW Natural invites Work for Art funded groups to perform at employee events year-round. The Standard encourages employees to spend time volunteering, and many of them choose to do so with groups funded by Work for Art. The connection between arts and healing is not lost on employees at OHSU—their children's hospitals in particular welcome arts activities for patients.

Employees and other donors who opt to give at least \$60 (just \$5 a month) get a lot in return, including an Arts Card, which provides two-for-one tickets to performances by 65 of the very groups that benefit from the money being raised. "We have more and more donors with Arts Cards every year," says program manager Kathryn Jackson, adding that the cards are especially prized by families who want to expose their children to arts experiences, which have become less present in schools.

The Arts Card is one aspect that sets Work for Art apart from

similar community funds. Another benefit that donors appreciate is that a coalition of city and county governments and private entities matches each gift dollar-for-dollar, and all of the proceeds go to arts and culture groups in Clackamas, Multnomah and Washington Counties. When a company signs on with the program, Work for Art brings artists into the workplace for a campaign kickoff event, and sometimes businesses engage these artists for leadership meetings and other corporate events as well. This ongoing relationship gives workers a glimpse of services that their donations

Arts Cards are especially prized by families who want to expose their children to arts experiences.

fund, and the performances they can attend with their Arts Card if they become donors.

As honorary chair, Harvey isn't just drumming up support among his own employees. Everyone who enters a Burgerville runs the risk of exposing themselves to art—and to Work for Art—through various events and promotions. One such promotion, called Feed the Arts, gives a percentage of a spring day's sales from all 39 Burgerville restaurants directly to the Work for Art Community fund. Who knows? The arts might prove as addictive as Burgerville's Walla Walla onion rings—to satisfy the craving with an Arts Card of their own, diners might ask their own employers to participate. ❁

\$823,693
total raised FY12

2,031
donors

73
participating
workplaces


workforart.org

GRANTS

RACC funds help keep the stage lights on, creativity flowing

WITH VOTERS' APPROVAL of the Arts Education & Access Fund, RACC will soon be charged with awarding record new funds in new ways. But in the meantime, grant monies for 2012-13 set a few records of their own.

The largest chunk of funds, more than \$1.7 million, was awarded last summer in the form of general operating support grants to 48 local arts organizations, including four first-time recipients: Bag&Baggage, NW Documentary Arts and Media, the Independent Publishing Resource Center (IPRC), and PHAME Academy. These grants are not for mere ideas or start-ups—to qualify, organizations need to have been in existence for three years, maintained \$80,000 or more in eligible income for at least two years, and meet other strict eligibility requirements. The inclusion of the Hillsboro-based theater company Bag&Baggage is a marker of “the increased support and advocacy” in Washington County, says grants officer Ingrid Carlson. And grants officer Helen Daltoso points out that this year's group of newcomers all show strong community impact, as well as artistic programming. Among the work that both IPRC and NW Documentary are doing is giving individuals the skills and the tools to tell their own stories, while PHAME is serving a unique population engaging adults with developmental disabilities in the fine and performing arts.

An additional 66 organizations (including schools) and 94 individual artists received \$732,440 in project grants in December of 2012 for work to be produced in 2013. At five percent higher than the previous year, it's the largest sum awarded yet for project grants – and helped meet the 12 percent increase in applications—at 352, another record. Daltoso credits the increases to several key efforts: “We believe that our outreach activities and online appli-

cation process have been very successful in helping us support so many new applicants.” She also says that RACC's ongoing artist workshop series, free grant orientation sessions, and the bimonthly artists' meet-up event, Art Spark, have all made a difference.

Some seventy volunteers staffed 18 peer-review panels to evaluate project applications. Funded efforts to look forward to in the coming year include Opera Theater Oregon's *The Cunning Little Vixen*, staged in a Sauvie Island barn, and comedy classes through the Clackamas County's branch of the National Alliance on Mental Illness designed to serve people with chronic mental health issues. Carlson points out that the grants also help people wrap up long-term projects, like finishing a film that's been years in the making or publishing a zine anthology.

RACC's professional development grants focus on growth and were awarded to 65 individuals and 16 groups in 2012 – they split nearly \$100,000 between the spring and fall grant cycles. These funds, sometimes just a few hundred dollars, are used for marketing materials, websites, or business classes. Many recipients also use the funds for education in their field, to study with a mentor, or travel for exhibitions or conferences—any way to take their work or their career to the next level. Daltoso says, “to have the opportunity to engage audiences outside of Oregon and speak to people about your work is a pretty big deal.”

Carlson and Daltoso are looking forward to the new opportunities that will come with the Arts Education & Access Fund. “This fund will help us serve an ever-increasing, diverse pool of applicants, and provide critical resources to help arts organizations provide more access to their programs,” says Daltoso. The overarching question for RACC: “How do we effectively and efficiently use these funds to benefit the entire community?”

87

volunteers served
on grant panels

2,329,000

combined audiences
of all grant recipients

\$253.5
million

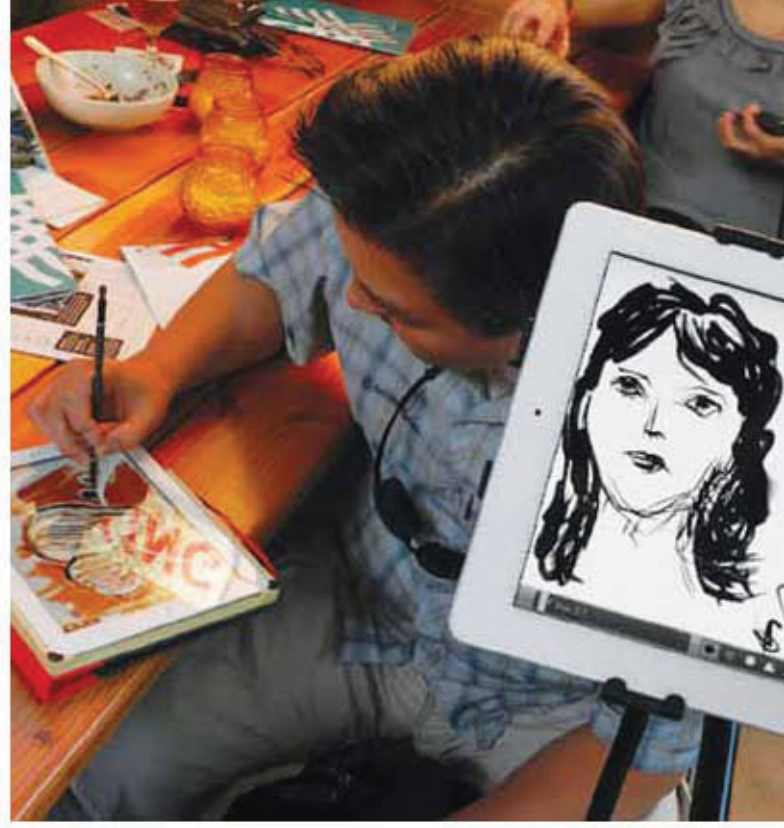
total economic impact
of the region's nonprofit
arts organizations



racc.org/
grants

Clockwise from top left: From Lesley's Throwing Paint Party, courtesy of Children's Healing Art Project (CHAP); Chamber Music Northwest, Jasper Quartet, photo by Jim Leisy; Portland Art Museum, Body Beautiful. Red-figured drinking cup, kylix, Greek, made in Athens, about 510-500 BC, attributed to Onesimos, from Caere, Italy. © The Trustees of The British Museum, 2012; Portland Center Stage, *It Ain't Nothin' But the Blues*, photo by Patrick Weishampel





Arts community strives to reach everyone

THE TREND TOWARD AN increasingly diverse metropolitan region has accelerated over the last few years, and the local arts community is responding by speeding up its efforts to ensure that all citizens have access to meaningful participation in arts and culture. With the publication of a comprehensive new Outreach & Equity Plan in November, 2012, RACC has demonstrated its intention to lead the way.

“Diversity isn’t just about the color of your skin, your sexuality or your heritage,” says RACC outreach specialist Tonisha Toler. “It’s about recognizing the unique value that everyone brings to the table. When you honor different perspectives, experiences and values, possibilities are expanded and new solutions are found.”

Reaffirming its goal to cultivate and support the broadest array of arts and culture experiences possible, RACC has ramped up its partnerships with other nonprofit organizations to connect new communities to RACC’s programs and services. In 2011 RACC partnered with Colored Pencils to expand both organizations’ outreach and services for local immigrant artist communities. RACC expanded these types of partnerships in 2012 with an RFP process that resulted in \$26,000 in funding for eight new community partners that will reach African immigrants and Latino day laborers, among other groups. One proposal from the Laotian American Foundation to stage a singing contest could have been dismissed as too American Idol, but genuine interest in other people and cultures won out: instead of chalking it up to a cultural disconnect, the funding panel learned that contests like these are important cultural customs in the local Laotian artist community.

Expanded outreach efforts such as these have succeeded in attracting more artists from all corners of the community to RACC workshops and networking events, which ultimately results in

more grant applications and awards to pockets of the community that RACC hadn’t served before.

In Portland, these opportunities will only grow thanks to the passage of the new Arts Education & Access Fund. With new resources come new incentives for RACC-funded organizations to meet the goal of ensuring that all Portland residents have equal access to the arts and arts education.

“In doing this important work sometimes people can take the easy path of counting noses and reaching quotas, but we’ve been very clear that that’s not our approach,” says executive director Eloise Damrosch. “Really the goal is to think about how our organizations reflect and represent the community we live in, and that means different things to different groups. We don’t expect everyone to get there overnight through some magic formula, but if we work together and take advantage of our different strengths and different approaches, together we can achieve the task at hand.”

Damrosch says that RACC’s challenge “is to be as much of a resource as possible. We have posted a web page focused on equity statistics and strategies, and links to other resources, and we’ve convened conversations with people who are actually doing this work in the field – not just talking about it. Some of them have been very effective.”

The principles set forth in RACC’s Outreach & Equity Plan apply to every aspect of doing business, from recruiting Right Brain teaching artists who can mirror the diversity of student populations to proactively encouraging entries from artists not yet represented in the city’s public art collection. “Once you get in the habit of asking if there’s another step you can take to make a new connection that could improve the outcome, the results start to speak for themselves,” says Toler. “Overall, this has infused the entire organization with a new way of thinking and acting.”

45%
of local public school
students from
communities of color

25.7%
of Oregonians
have a disability

32%
of RACC board
members represent
ethnic minorities


**racc.org/
equity**

Monumental works take place along new streetcar line

AS EAST-SIDE commuters get used to the mammoth metal sculpture by the Hawthorne Bridge, the conversation it inspires is shifting from “What in the world is that?” to “Ah, it’s art, and it’s pretty cool.” When its fraternal twin goes up this year a few blocks north, by the Morrison Bridge, the two structures will be in conversation with each other, a call-and-response pairing of a positive and negative rendering of space.

The pieces line the Portland Streetcar’s east-side extension and were funded through the streetcar’s contribution to the Percent for Art program. The size of the streetcar project gave RACC, which oversees the city’s public art collection, the chance to do something big, with a \$700,000 budget.

“I don’t think we’ll see another project on this scale for a while,” says public art manager Kristin Calhoun. “We could have taken these funds and divided them into ten smaller projects, but made the choice to do something bold and monumental.” She adds that RACC was excited about the chance to commission large-scale, highly visible works on the east side.

Working with a local selection panel that included artists, neighborhood business owners and employees, RACC used an invitational process to attract artists who demonstrated an ability to accomplish these kinds of projects.

The pieces by the Hawthorne and Morrison Bridges, collectively called *Inversion: Plus/Minus*, are the work of Lead Pencil Studio, founded by David Douglas grad Annie Han and Daniel Mihalyo, who are also responsible for the recently installed Non-Sign II at the US-Canada border in Blaine, Washington. The skeletal, seemingly floating buildings of *Inversion: Plus/Minus* are “ghosts” of the Phoenix Iron Foundry that used to be on the site, a marker of the area’s past. “We really wanted work that spoke to that neighbor-

hood and its industrial sanctuary,” Calhoun says.

Han and Mihalyo are based in Seattle, but their work here certainly has “economic tentacles,” says Calhoun. “They moved to Portland temporarily, rented studio space, and hired local welders.” Those choices keep much of the investment in the community.

The other major artwork on the new line, a shelter to be built later this year at the streetcar stop where Broadway and Weidler converge, is the first municipal project in the US by Los Angeles-based Cuban-American artist Jorge Pardo, a recipient of a MacArthur Foundation “genius” grant. Given the long gray rainy season, the selection panel hoped Portlanders will appreciate the “boost of color” in Pardo’s work.

Portland and Multnomah County have Percent for Art ordinances, which call for two percent of most publicly funded capital construction budgets to be set aside for public art. RACC manages the funds and the artist selection process for the city and county.

Calhoun says “we are fortunate to live in a city where we prioritize creativity and the uniqueness of what artists contribute to the community.” RACC continues to look for ways to make sure that Portland’s public artworks reflect the whole city. “We take seriously that this is a collection for and of the community and needs to represent a diversity of styles, artists, and reflect the growing diversity of our city and region.”

“Everyone has their favorite pieces of public art, and we believe that the collection as a whole continues to give Portlanders something to be proud of,” says Calhoun. “Some works draw more attention than others—for better or for worse.”

With the size of these new works and their location on a major transit corridor, these latest pieces of public art are sure to be among the most noticed. ❀

55

murals added to
Portland’s collection
since 2005

2,200

hours of hands on
maintenance in 2012

64

artists added to the
collection since 2010

RACC’s online
public art database



**racc.org/
publicart**



Leaps and Bounds

IN 2012, THE Right Brain Initiative expanded to new schools as it entered its fifth year. Another RACC program, Work for Art, also continued to grow. Through the Percent for Art program, the expansion of the Portland Streetcar to the east side meant new public art works along the Central Loop, including huge, highly visible, marquee projects like *Inversion: Plus/Minus*. It seems like everything at RACC is growing—everything, that is, except for RACC itself.

“We just continue to do more with the same staffing,” says director of operations Cynthia Knapp. “We make decisions based on what our organization needs to look like instead of trying to pile on a bunch of staff.” For a grant-awarding organization, she adds, “The goal is to get the most money out, so we don’t want to keep money in here to increase our overhead.”

In the coming year, RACC’s ability to distribute grants will have

a major growth spurt thanks to the passage of the Arts Education & Access Fund in November 2012. The new, \$35-per-adult tax will send an estimated \$6.8 million to local school districts and roughly another \$5.4 million through RACC, the majority of which will go to general operating support grants. Knapp says the measure’s passage is an opportunity to create a new grant program for education and access for arts organizations working with schools and underserved populations.

As mechanisms are put in place for the funds and attendant citizen oversight (also mandated by the ballot measure), it’s too early to tell exactly what the resulting program will look like. But with 62 percent of voters supporting the new tax, one thing is very clear: In Portland, Knapp says, “They see the value in the arts, and providing our children with arts education.” ❁

REVENUE



* Includes \$1,596,973 in percent-for-art revenues and \$290,000 pass-through funds to Artists Repertory Theatre and Creative Advocacy Network

** Includes \$411,772 in percent-for-art revenues and \$200,000 in transient lodging tax revenues

*** Includes \$135,175 donor designated funds to arts organizations

A. City of Portland *	\$6,080,257	69.0%
B. Multnomah County**	\$771,978	8.8%
C. Clackamas County	\$100,000	1.1%
D. Washington County	\$90,000	1.0%
E. Oregon Arts Commission	\$155,901	1.8%
F. Work for Art donations ***	\$505,007	5.7%
G. Other private sector gifts	\$451,148	5.1%
H. Other public support	\$95,495	1.1%
I. Earned income	\$556,493	6.3%

Total Revenue \$8,806,280

EXPENSES



* Includes \$290,000 pass-through funds to Artists Repertory Theatre and Creative Advocacy Network

** Includes \$135,175 donor designated funds to arts organizations

A. Advocacy	\$335,739	4.0%
B. Grants*	\$3,060,676	36.8%
C. Public Art	\$2,130,646	25.6%
D. Community Services**	\$738,065	11.9%
E. Arts Education	\$748,270	9.0%
F. Management & General	\$1,054,949	12.7%

Total Expenses \$8,323,863

Increase in Net Assets \$344,712

Net Assets, Beginning of Year \$1,796,644

Net Assets, End of Year \$2,141,356

CONTRIBUTIONS

This list includes donations received between January 1 and December 31, 2012.

Unrestricted Gifts

Alan Alexander III
Jesse Beason
Nik Blosser
Gwyneth Gamble Booth
Verlea G. Briggs
Jennifer Cies
Jessica Clark
Jay Clemens
Michael and Eileen Day
Daryl Dixon
Mike Golub
The Fred W. Fields Fund of The Oregon Community Foundation
Stacey A. Graham
Kira Higgs
Phillip Hillaire
Eric R. Hormel
Jerry and Ann Hudson
Karen Karbo
Joe Krumm
Peg Malloy
Max and Lori Miller
Bonita Oswald
Joanna Priestley
Robert Raushenberg Foundation
Brian Rice
Jan Robertson
Marian and Elihu Schott Family Fund of the Oregon Community Foundation
Lina Garcia Seabold
Carol Smith
Frederick Williams

Cultural Leadership Program

Paul G. Allen Family Foundation

Innovation Prize

Anonymous

pARTy in the name of Art

LEAD SPONSORS:

Harold & Arlene Schnitzer CARE Foundation
Falcon Art Community
Native Arts & Cultures Foundation

CO-SPONSORS:

Apex Pharmacy
Artslandia
Boeing
Burgerville
Garcia Seabold Investments, LLC
Hopworks Urban Brewery
IFC/Portlandia
KeyBank
Morel Ink
Norris Beggs & Simpson
Portland General Electric
Portland Timbers
The Standard
Tonkon Torp
US Bank

ADDITIONAL CONTRIBUTIONS:

Bend Distillery
Bird Dog Creative
Cargo
Cupcake Jones
Marty Davis
Dotzero Design
Stacey Graham
Hot Lips Pizza
Cate Millar
Jon Palanuk
Portland Mercury
Red Dress PDX
Salt & Straw
The Sisters of Perpetual Indulgence
Storm Large
Stumptown Coffee
Al Solheim
Sunshine Dairy Foods
ThinkDrink

The Right Brain Initiative

The following donors contributed \$500 or more to support The Right Brain Initiative in 2012

Aldrich Kilbride & Tatone
Bank of America
Barbara Mason
Duncan and Cindy Campbell of The Campbell Foundation
The Collins Foundation
The Concordia Foundation
Compound Gallery
Charmain Creagle
FEI Company

First Independent Bank
Sean Hammons
City of Hillsboro, Hillsboro Arts & Culture Council
The Ing Family Fund of The Oregon Community Foundation
The James F. & Marion L. Miller Foundation
Pat and Joel Kaplan
Juan Young Trust
Betsy and Marvin Kaiser
KeyBank
M.J. Murdock Charitable Trust
Brook MacNamara
Lori and Max Miller
Susan and Bernard Miller
Meyer Memorial Trust
The Patton Family Fund of The Oregon Community Foundation
PGE Foundation
Harold and Arlene Schnitzer CARE Foundation
Carol and Walt Smith
The Standard
Umpqua Bank
US Bank/US Bancorp Foundation

For a list of all Right Brain Initiative donors, visit therightbraininitiative.org/donors.

Work for Art

The following donors contributed \$500 or more to the Work for Art Community Fund and/or Work for Art's Arts Education Fund

Anonymous (4)
Roy Abramowitz
David Anderson
Stefanie Becker
Joyce Bell
Carol Bernick
Elisabeth Brewer
Verlea Briggs
Mark Clift
Cari Colton
Eloise Damrosch
Cindy Deane
Brent Denhart
Janet Ebright
Erika Foin
Cynthia Fuhrman

Laura Goty
Jessica Hamilton
Jeff Hawthorne
Dolores Humphreys
Renata Lasich
Joshua Lipscomb
Steven Lovett
Susan Marks
Michael McClain
Jeff Miller
Meredith Miller
Randall Miller
Jeanette Mladenovic
Julie Neburka
Laura Newton
William Nicholson
Louise Patten
Gary Reynolds
Paul Ridlon
Jan Robertson
Dale Savage
Rebecca Settlemyer
Mary Stradin
Erik Stromquist
Von Summers
Peter Suriano
Tonya Varga
Thomas Wood

CORPORATE GIFTS AND MATCHING GIFTS

Axiom
Burgerville
Firstenberg Family Foundation
First Independent Bank
KeyBank
NW Natural
Portland General Electric
Sunshine Dairy Foods
Turtledove Clemens
Vernier Software & Technology
Wieden+Kennedy
Zimmer Gunsul Frasca

WORKPLACE GIVING CAMPAIGNS

Artists Repertory Theatre
Axiom
Bank of the Cascades
Business for Culture & the Arts
Boora Architects
Broadway Rose Theatre Company
Bullivant Houser Bailey
Burgerville
City of Beaverton
City of Lake Oswego

City of Portland
Davis Wright Tremaine
Do Jump!
Federal Workers
Intel
JPMorgan Chase
KeyBank
Lakewood Center for the Arts
McDonald Jacobs
Metro
Metropolitan Group
Multnomah County
Norm Thompson Outfitters
Norris, Beggs & Simpson Companies
North Clackamas Schools
NW Natural
ODS Companies
OHSU
Oregon Ballet Theatre
Oregon Children's Theatre
Pacific University
Perkins & Co
PICA
Pop Art
Port of Portland
Portland Art Museum
Portland Center Stage
The Portland Clinic
Portland General Electric
Portland Opera
Portland Public Schools
Portland Taiko
Portland Timbers
Portland Youth Philharmonic
Regional Arts & Culture Council
Schwabe, Williamson & Wyatt
The Standard
State of Oregon
Stoel Rives
Tears of Joy
Tonkon Torp
Travel Portland
Turtledove Clemens
Umpqua Bank
Washington County
Wells Fargo
Young Audiences
Zimmer Gunsul Frasca

For a complete list of all contributions received by Work for Art, visit workforart.org/donors.

Additional contributions:

AKT
Art Institute of Portland
Augen Gallery
Cascadia Art Conservation Center
C.J. Howe Vacation Loft
Downtown Portland Clean and Safe
Elephant's Deli
Ethos at IFCC
Framing Resource
Froelick Gallery
Geezer Gallery
GISI Marketing Group
Harper's Playground
Charles A. Hartman Fine Art
Davis Wright Tremaine
Hotel Monaco
Hot Lips Pizza
Ernest Kim
Livid Instruments
Gary McGee & Company
Milagro Theatre
Missionary Chocolates
New Columbia Community Education Center
Ninkasi Brewing Company
Pacific Pressure Washing
University of Oregon School of Architecture & Allied Arts
Point Blank Distributing
Portland Art Museum
Portland Tribune
Salt & Straw
Turtledove Clemens
Tonkon Torp

RACC BOARD & STAFF

RACC BOARD

Lina Garcia Seabold,
*Chair**
Peg Malloy,
*Vice Chair**
Jennifer C. Cies,
*Treasurer**
Alan Alexander III,
*Secretary**
Carol R. Smith, Ed.D.,
*Chair emeritus**
Jesse Beason
Nik Blosser
Verlea Briggs
Jessica Clark
Jay Clemens
Eileen Day
Daryl Dixon
Mike Golub
Stacey A. Graham*
Kira Higgs
Phillip Hillaire
Eric Hormel
Dr. Jerry E. Hudson
Karen Karbo
Joe Krumm
Max M. Miller, Jr.*
Bonita Oswald*
Joanna Priestley
Brian Rice
Jan Robertson*
**denotes Executive Committee*

RESOURCE COUNCIL

Pam Baker
Ernie Bloch II
Gwyneth Gamble Booth
Claudia Burnett
George Forbes
Eric Friedenwald-Fishman
Mike Lindberg
Gary Maffei
Mary Maletis
Julie Mancini
Josie Mendoza
Cate Millar
Randy J. Miller
Carole Morse
Bob Packard
Dorothy Piacentini
Bettsy Preble
Mary Ruble
Joan Sappington
Tad Savinar
Craig Thompson
Julie Vigeland
Clark Worth

IN MEMORIAM

Pete Vlahos

RACC STAFF

Executive Director
Eloise Damrosch

ADMINISTRATION & FINANCE

Marci Cochran,
Office Manager
Michele Graham,
Finance Clerk
Carla Holmberg,
Bookkeeper
Cynthia Knapp, *Director of Operations*
Jennifer Matsumura,
Finance & HR Specialist
Anna Rigby,
Executive Assistant

ADVOCACY & DEVELOPMENT

Matthew R. Chase,
Development Specialist
Chad Hadsell, *Work for Art Administrative Assistant*
Jeff Hawthorne, *Director of Community Affairs*
Windy Hovey, *Workplace Giving Coordinator*
Kathryn Jackson, *Work for Art Manager*
Steve Kelly, *Workplace Giving Coordinator*

GRANTS

Ingrid Carlson,
Grants Officer

Helen Daltoso,
Grants Officer
Alfredo Lettenmaier,
Grants Assistant

PUBLIC ART

Kristin Calhoun, *Public Art Manager*
Danielle Davis, *Public Art Collections Registrar*
Peggy Kendellen, *Public Art Manager*
Keith Lachowicz, *Public Art Collections Manager*
Cheryl Norton, *Public Art Assistant*
William Rihel, *Public Art Program Specialist*

COMMUNICATION SERVICES

Mary Bauer,
Communications Associate
Chris Bisgard,
Information Technology Specialist
John Henry Dale, *IT Help Desk Technician*
Phoebe Southwood,
Information Technology Associate
Tonisha A. Toler,
Outreach Specialist

ARTS EDUCATION

Rebecca Burrell, *The Right Brain Initiative Outreach Specialist*
Allie Maki Maya, *The Right Brain Initiative Program Assistant*
Becky Miller, *The Right Brain Initiative Administrative Assistant*
Marna Stalcup, *The Right Brain Initiative Program Manager*
Kendra Yao, *The Right Brain Initiative Program Specialist*

STRATEGIC PARTNERS

Clackamas County Arts Alliance
Gresham Barlow School District
Hillsboro School District
National Endowment for the Arts
North Clackamas Schools
Oregon Arts Commission
Oregon Cultural Trust
Oregon Trail School District
Portland Public Schools
The John F. Kennedy Center for the Performing Arts

Westside Cultural Alliance, Washington County
Young Audiences of Oregon & SW Washington

MEMBERSHIPS

Americans for the Arts
ASCD
Business for Culture & the Arts
City Club of Portland
Creative Advocacy Network
Cultural Advocacy Coalition
Grantmakers in the Arts
Grantmakers of Oregon and Southwest Washington
Nonprofit Association of Oregon
Portland Business Alliance
Public Art Network
The Society for Human Resource Management
Travel Portland
United Arts Fund Network
U.S. Urban Arts Federation
Willamette Valley Development Officers

ARTISTS & OTHER PARTNERS

RACC directly supported the following artists and organizations in 2012.

ARTISTS IN THE WORKPLACE AND OTHER WORK FOR ART PARTNERS

Adlai Alexander
Dan Balmer
Ron Blessinger
Gerardo Calderon
Jennifer Christie
Patricia Ferguson
Brian Gardiner
Kasandra Gruener
Yoji Hall
Courtenay Hameister
Jamey Hampton
Val Harder

Andrew Harris
Barna Howard
Caitlyn Huang
Justin Huang
Jonathan Huang
Imago Theatre
Micah Kassell
Luanne Katz
Jonathan Krebs
Kukatonon
Byron Laing
Anna Marra
Sean McGrath
George Mitchell
Fernando Monroy
Megan Moran

Obo Addy Drummers
Nelda Reyes
Matt Schlosky
Holly Shaw
Nalin Silva
Reba Sparrow
Kim Stafford
Robert Villegas
Lisa Volle
Brittany Walsh

ARTISTS ADDED TO THE PORTABLE WORKS COLLECTION

Holly Andres
Corey Arnold

Pat Boas
Deanna Bredthauer
Esteban Camacho
Steffensen
Laurie Daniel
Rachel Davis
Shawn Demarest
Justin Finkbonner
Bobby Foulther
Kwa Franklin Ghong
Surabhi Ghosh
Damien Gilley
Pat Courtney Gold
Trish Grantham
Sabina Haque
Farooq Hassan

Kathy Karbo
Jesus Kobe Garcia
Kendra Larson
Stu Levy
Ron Mills de Pinyas
Pepo Moscoso
Susan Murrell
Thomas Le Ngo
Trude Parkinson
Hampton Rodriguez
Grace Sanchez
Gwenn Seemel
Sara Siestrem
Shu-Ju Wang
Tammy Jo Wilson

ARTISTS ADDED TO THE VISUAL CHRONICLE

Bobby Abrahamson
Michael Chambers
Jonnell Covault
Larry Cwik
Paul Gentry
Damian Gilley
George Johanson
Edis Jurcys
George Kelly
Beth Kerschen
Stuart Allen Levy
Gabriel Liston
Jewel Minarik

Leah Nash
TJ Norris
Melody Owen
Susan Schenk
Michelle Van Orsow
Kathryn Waters

PORTLAND BUILDING INSTALLATION SPACE ARTISTS

Jodie Alexi Cavalier
Kendra Larson
Jules Nemish
Christy Hawkins
Leslie Vigeant
Stephen Kurowski &
Marina Tait
Linda Hutchins
Margot Myers
Nathan Sandberg

PUBLIC ART COMMISSIONS

Ron Baron
Addie Boswell
Peg Butler
Dan Corson
Baba Wagué Diakité
Carl Diehl
Ruth Frances Greenberg
Chris Haberman
Blessing Hancock
Ariana Jacob
Una Kim
Dave Laubenthal
Lead Pencil Studio
Mack McFarland
Anna Valentina Murch
Ronna Neuenschwander
Joe O'Connell
Erin Shie Palmer
Jorge Pardo
Jeffrey Richardson
Isaka Shamsud-Din
Buster Simpson
Space Craft Mission to
the Arts
Anne Storrs
Antwoine Thomas
United Lodge Federation

ART SPARK FEATURED ORGANIZATIONS

100th Monkey Studio
B Media Collective
Crow Arts Manor
Colored Pencils Art and
Culture Council
Destination DIY
Em Space
Fab PDX Art Space
Flight 64
Grand Detour
I Heart Art PDX
Independent Publishing
Resource Center
Junk to Funk
Living Stages
Ooligan Press
PDX Pipeline

Portland Central America
Solidarity Committee
Portland Open Studios
Portland Oregon
Women's Film Festival
Portland Story Theater
Portland Taiko
Project Grow
Sisters of the Road
Empowered Voices
Media Project
Wordstock

CULTURAL LEADERSHIP PROGRAM PARTICIPANTS

45th Parallel
Artichoke Community
Music
Bag&Baggage
Productions
Bahia Brazil
Beaverton Civic Theatre
bobbevy
Cathedral Park Jazz
Festival
Cinema Project
CoHo Productions
Colored Pencils
Compass Repertory
Theatre
Creative Music Guild
Dill Pickle Club
Disjecta Interdisciplinary
Art Center
Do Jump!
Ethos Music Center
Fear No Music
InterArts
JANE- a theatre company
Jeremy Wilson
Foundation
Jewish Theatre
Collaborative
Kukatonon
Local 14
Luciana Proaño Dance
Milwaukie Arts
Committee
My Voice Music
Natya Leela Dance
Academy/Studio 2 @
Zoomtopia
Newspace Center for
Photography
Oregon Writers Colony
PDX Pop Now!
Pelu Theatre
Portland Experimental
Theatre Ensemble (PETE)
Portland Story Theater
Portland Vocal Consort
Push Leg
Rock 'n' Roll Camp for
Girls
Shaking the Tree
Skinner Kirk Dance
Ensemble
Tahni Holt Dance
Tears of Joy Theatre
tEEth

The August Wilson Red
Door Project
The Dreaming Zebra
Foundation
The Geezer Gallery
The Waterbrook Studio
Theatre Vertigo
Transformational Voice
Institute
Triangle Productions!
Troika Ranch
Washington County
Museum
Water in the Desert
World Stage Theatre
YU Contemporary

GRANT RECIPIENTS

C. Gregorio Acuna
Agnieszka Laska Dancers
Devon Allen
Tracy Allinson
Andisheh Center
Architecture Foundation
of Oregon
Artists Repertory
Theatre
Hillary Atiyeh
Corey Averill
A-WOL Dance Collective
Badass Theatre
Company
Bag&Baggage
Productions
Hayley Barker
Avantika Bawa
Beaverton Civic Theatre
Amy Bernstein
Barbara Bernstein
Chase Biado
Jesse Blanchard
Andrew Blubaugh
Blue Sky Gallery
BodyVox
Sven Bonnichsen
Boom Arts
James Boscole
Beth Bradford
Gary Brickner-Schulz
Broadway Rose Theatre
Company
Tracy Broyles
Bubbaville
Buckman Elementary
Jessica Burton
C.C. Stern Type Foundry
Jennifer Camp
Cappella Romana, Inc.
Chamber Music
Northwest
Children's Healing Art
Project (CHAP)
Teresa Christiansen
Cinema Project
Classical Revolution PDX
Columbia Symphony
Orchestra
Compass Repertory
Theatre
Conduit Dance, Inc.
Ilima Considine

Anna Crandall
Creative Music Guild
Carlos Alexis Cruz
Philip Cuomo
Anna Daedalus
Fernanda D'Agostino
Berl Dana'y
Ben Darwish
Shelby Davis
Baba Wagué Diakité
Dill Pickle Club
Do Jump! Extremely
Physical Theatre
Daniel Duford
Kowkie Durst
Dan Duval
Wynde Dyer
Earth and Spirit Council
Estacada Arts
Commission
Ethos Music Center
Experimental Half-Hour
Fear No Music
Film Action Oregon
Lisa Fink
Ashleigh Flynn
Free Arts NW
Friends of Chamber
Music
Friends of Marquam
Nature Park
Laura Fritz
Subashini Ganesan
Keyon Gaskin
Nicole Georges
Get A Life Marching
Band, Inc.
Leanne Grabel
Alison Gradischer
Grand Detour
Anna Gray
Cheryl Green
Jenni GreenMiller
Julia Grieve
Ashia Grzesik
Courtenay Hameister
Hand2Mouth Theatre
Sabina Haque
Joel Harmon
Chris Harmon
Jen Harrison
Chisao Hata
Matthew Henderson
Hillsboro Farmers'
Markets
Linda Holland
Ashley Hollingshead
Bill Holznagel
Lawrence Howard
Nathaniel Hulskamp
CJ Hurley
Imago Theatre
Impact NW
Independent Publishing
Resource Center (IPRC)
India Cultural
Association
InterArts
Irvington School PTA
Kazuyo Ito

Sara Jaffe
Nick Jaina
Aaron Flint Jamison
Lawrence Johnson
Kalakendra
Julie Keefe
Kathie Kerler
Eva Kokopeli
Joanne Kollman
Lee Krist
Kukatonon
Eva Lake
Lakewood Center for
the Arts
Alaina Lara
Late Night Library
Andrea Leoncavallo
Alain LeTourneau
Lewis & Clark College
Hoffman Gallery
Liminal Performance
Group
Fuchsia Lin
Literary Arts, Inc.
Live Wire! Radio
Living Stages
Maggie Maggio
Lyndee Mah
MAI3M, Inc.
Valerie Mallinson
Margaret Malone
Carla Mann
Susannah Mars
Paul Martone
Jim McGinn
Max McGrath-Riecke
Janet McIntyre
Media Institute for Social
Change
Media, Arts &
Technology Institute
(MATI)
MetroArts, Inc.
Metropolitan Youth
Symphony
Miracle Theatre Group
Chaz Mortimer
Museum of
Contemporary Craft
Music Access Project of
Portland
My Voice Music
Emily Nachison
Lamiae Naki
National Alliance
on Mental Illness of
Clackamas County
NAYA Family Center
Loren Nelson
Eric Nordin
Eric Nordstrom
TJ Norris
North Clackamas SD 12
Northwest Children's
Theater and School
Northwest Dance Project
Donna Nuccitelli
Orland Nutt
NW Documentary Arts
& Media
Eleanor O'Brien

Leslie O'Connor
Caroline Oakley
Johnnie Olivan
Kristin Olson-Huddle
Opera Theater Oregon
Oregon Ballet Theatre
Oregon Children's
Theatre
Oregon Cultural Access
(ORCA)
Oregon Repertory
Singers
Oregon Symphony
ORLO
Dante Ortiz
Pacific Crest Wind
Symphony
Pacific Northwest
College of Art (PNCA)
Brian Padian
Painted Sky Inc.
Jacob Pander
Trude Parkinson
Casey Parks
Leif Peterson
Nick Peterson
Vu Pham
PHAME Academy
Andrew Phoenix
Ryan Pierce
PlayWrite, Inc.
Polaris Dance Theatre
Polish Library
Association
Portland Actors
Conservatory
Portland Art Museum
Portland Baroque
Orchestra
Portland Center Stage
Portland Chamber
Orchestra
Portland Children's
Museum
Portland Experimental
Theatre Ensemble (PETE)
Portland Gay Men's
Chorus
Portland Institute for
Contemporary Art (PICA)
Portland Jazz Festival
Portland Lesbian Choir
Portland Opera
Association
Portland Oregon
Women's Film Festival
(POW Fest)
Portland Piano
International
Portland Playhouse
Portland Queer
Documentary Film
Festival
Portland Revels
Portland State University
Department of Art
Portland Story Theater
Portland Taiko
Portland Youth
Philharmonic
Portland-Suzhou Sister
City Association

ARTISTS & OTHER PARTNERS CONTINUED

Profile Theatre Project
Lisa Radon
Jayanthi Raman
RASIKA - India Arts and Culture Council
Kelly Rauer
Recess LLC
Michael Reinsch
Christopher Reitmaier
Research Club LLC
Resonance Ensemble
Rex Putnam High School
Risk/Reward
Rock 'n' Roll Camp for Girls
Micheline Ronningen
Michelle Ross
Paul Rowley
John Savage
Crystal Schenk
Lisa Schonberg
Andrea Schwartz-Feit
Heidi Schwegler
Rebecca Shapiro
Larry Sherman
Carter Sickels
Signal Fire
Shalanda Sims
Stephen Slappe
Mike Smith
Tony Sonera
Sowelu Theater
Abigail Spring
Staged! Portland's Musical Theatre Series
Eric Stewart
Andrea Stolowitz
Julia Stoops
Timmy Straw
Sal Strom
Paul Susi
Tears of Joy Theatre
Ithica Tell
The Art Gym
The August Wilson Red Door Project
The Library Foundation
The Obo Addy Legacy Project
The Portland Ballet
Theatre in the Grove
Theatre Vertigo
Third Angle New Music Ensemble
Third Rail Repertory Theatre
Minh Tran

Mariana Tres
Lorenzo Triburgo
Jordan Tull
Venerable Showers of Beauty Gamelan
Elise Wagner
Curtis Walker
Samantha Wall
Tamara Wallace
Holcombe Waller
Archie Washington
Water in the Desert
Damaris Webb
Jacqueline Weissman
Emmett Wheatfall
White Bird
Willamette Partnership
Alan Wone
Wordstock, Inc.
World Forestry Center
Write Around Portland
Young Audiences of Oregon
Kristin Zabawa
Zeitgeist Northwest

RIGHT BRAIN TEACHING ARTISTS

Jan Abramovitz
Angela Allen
Albert Alter
BodyVox
Addie Boswell
Tracie Broughton
Karen Brunke
Beth Rogers Bundy
Nancy Coffelt
Bernie Duffy
Wendy Dunder
Earth Arts NW
Sarah Ferguson
Nikki Flinn & Pierson
Rintz: Acts of Wonder
Rachel Foxman
Caren Graham
Alice Hill
Diane Jacobs
Julie Keefe
Rachel Lidskog, Dance
Like the Stars
Rick Meyers
Amy Minato
Sarah Nagy
Pamela Norris
Karie Oakes
Greta Pedersen
Nicole Penoncello

NW Children's Theater
NW Film Center
The Obo Addy Legacy Project
Oregon Ballet Theater
Oregon Children's Theater
Oregon Symphony
Ben Popp
Portland Art Museum
Portland Children's Museum
Portland Taiko
Donna Prinzmetal
Peggy Ross
Rodolfo Serna
Caitlin Shelman
Amy Steel
Lisa Wilcke
Carla Wilson
Tears of Joy Theatre
Tracy Wolf-Paquin
Kathryn Kramer Waters
Wordstock
Young Audiences

We are grateful to the many volunteers who contributed invaluable time and talent in 2012. Thank you all!

ART SPARK

Pollyanne Birge
Xylia Buros
Julian Chadwick
David Cohen
Eve Connell
Keith Daly
Mack McFarland
Joe Staskerz

BOARD LEADERSHIP DEVELOPMENT COMMITTEE

Kira Higgs
Joe Krumm
Peg Malloy
Max M. Miller, Jr.
Lina Garcia Seabold
Carol R. Smith, Ed. D.

EQUITY TASK FORCE

Jesse Beason
Daryl Dixon
Philip Hillaire
Joe Krumm
Peg Malloy
Bonita Oswald
Lina Garcia Seabold

FINANCE & AUDIT COMMITTEE

Jennifer Cies, Treasurer
Nik Blosser
Jessica Clark
Eileen Day
Mike Golub
Eric Hormel
Dr. Jerry E. Hudson
Arron Dieter,
Investment Consultant

GREEN TEAM

Jesse Beason
Verlea Briggs
Kira Higgs
Max M. Miller, Jr.

INTERNS AND OFFICE VOLUNTEERS

Jim Lykins
Jessica Bania
Lenall Siebenaler

LEGAL COUNSEL

Anne Barragar and Gregory Chaimov of Davis Wright Tremaine

PARTY IN THE NAME OF ART EVENT PLANNING COMMITTEE

Sally Dadmum Bixby
Reid Decker
Deborah Edward
Cynthia Fuhrman
Phillip Hillaire
Lina Garcia Seabold
Jon Palanuk
Kate Sokoloff

PHOTOGRAPHY SERVICES

Bill Barry

Grants

ARTIST FELLOWSHIP PANEL

Amy Collen
Russ Gage
Shelley Midthun
Stephen Slappe
David Walker

GENERAL SUPPORT PANEL

Alan Alexander III
Peg Malloy
Ben Moorad
Michelle Reynolds

GRANTS REVIEW COMMITTEE

Alan Alexander III
Jesse Beason
Jay Clemens
Peg Malloy
Bonita Oswald
Tad Savinar

OPPORTUNITY GRANT PANEL

Alan Alexander III
Howie Bierbaum
Cary Clarke
Jay Clemens
Gwyneth Gamble Booth
Carrie Hoops
Tad Savinar

PROJECT GRANT PANELS

Delaney Allen
Tomi Anderson

Marcia Arganbright
Linda Austin
Adriana Baer
Stephfon Bartee-Smith
Kristine Bella
Kris Bluett Woolen
Brian Borrello
Addie Boswell
Stacy Brewster
Beth Bundy
Jennifer Camp
Camille Cettina
Jedidiah Chavez
Zoe Clark
Keith Daly
Kenneth Dembo
Jason Doizé
Mo Fee
Felicity Fenton
Travis Fitzgerald
Robert Freedman
Deb Garman
Damien Gilley
Andrew Golla
Sara Guest
Alicia Hammock
Elijah Hasan
Tricia Hoffman
Tahni Holt
Mona Huneidi
Natalia Kay
Kristan Kennedy
Gavin Larsen
David Laubenthal
Harriet Levi
Katy Liljeholm
Ivy Lin
Gabriel Liston
Marianna Lomanto
Jim Lommasson
Michael McManus
Erica Melton
Anita Menon
Claudia Meza
Bonnie Miksch
Martha Morgan
Katie Murphy
AnnMarie O'Malley
Valerie Otani
Honey Owens
Jan Robertson
Kaia Sand
Greg Sax
Maisee Speer
Neal Spinler
Andre St. James
Laura Streib
Dao Strom
George Taylor
Seth Truby

VOLUNTEERS

Kay Vega
François Vigneault
Amaya Villazan
Rebekah Villon
Ezra Weiss
Takahiro Yamamoto
Renée Zangara
Peter Zisa

Public Art

PUBLIC ART ADVISORY COMMITTEE

Nan Curtis
John Forsgren
Phillip Hillaire
Matthew Juniper
Karen Karbo
Victor Maldonado
Linda Tesner
Dorie Vollum
David Wark

DAWSON PARK

Jonathan Beaver
Sandra Burtzos
Carol Herzberg
Gary Hollands
Patricia Welch
Linda Wyson

EMERGENCY COORDINATION CENTER

Jim Coker
John Forsgren
David Gray
Ethan Jewett
Mary Josephson
Kate Mytron
Crystal Schenk
Josh Stein

FIRE STATION 18

Chuck Harrison
Jason Greene
Kristine Artman
Michael Walsh
Tammy Jo Wilson

INTERSECTIONS: BUD CLARK COMMONS

Doreen Binder
Rachael Duke
John Holmes
Pamela Kambur
Billy Kemmer
Victor Maldonado
Jen Delos Reyes

INTERSECTIONS: CITY ARCHIVES RESIDENCY

Dianna Banning
Chris Beanes
Jim Carmin
Clare Carpenter
Mary Hansen
Heather Watkins

MOODY AVENUE/ GIBBS PEDESTRIAN BRIDGE

Jean Senechal Biggs
Christine Bourdette
Kate La Grand
Stephen Leflar
Carol Mayer-Reed
Kathleen Root
Simon Tomkinson
Jody Yates

PORTABLE WORKS

Rebecca Dobkins
Victor Maldonado
Cris Moss
Andrea Schwartz-Feit
Arvie Smith
Allyson Spencer
Nim Xuto

PORTLAND BUILDING INSTALLATION SPACE

Andrea Codorean
Michael Endo
Brian Padian
Patrick Rock
Shu-Ju Wang

PUBLIC ART MURALS COMMITTEE

Liz Foucher Branch
Gideon Hughes
Kendra Larson
Victor Maldonado
Mark Smith

SELLWOOD BRIDGE

Jean Senechal Biggs
Liz Smith Currie
Deborah Horrell
Steve Katko
Heather Koch
Mike Rathbun
Ricardo Rabines
Jeffrey Stuhr
Jody Yates

VETERANS MEMORIAL COLISEUM PANEL

Kevin Brake

Ron Carr
Elan Lambert
Jim Lommasson
Mack McFarland
Valerie Otani

VISUAL CHRONICLE OF PORTLAND

Gabe Flores
Roll Hardy
Motoya Nakamura
David Oates
Blake Shell

The Right Brain Initiative

GOVERNING COMMITTEE

Sam Adams
Verlea Briggs
Tim DuRoche
Melissa Goff
Tom Hughes
Marvin Kaiser
Krista Koehl
Bruce Livingston
Max Miller
Tim Mills
Carolyn Ortman
Sarah Prevost
Jan Robertson
Kathi Robinson
Reuben Roqueni
Traci Rossi
Jim Schlachter
Judy Shiprack
Carol R. Smith
Lucrecia Suarez
Paula Wight

OPERATING COMMITTEE

Deb Carroll
Tony Fuemmeler
Subashini Ganesan
Melissa Goff
Janis Hill
Debbie Johnson
Teresa Ketelsen
Jon Pedé
Joel Stuart
Carol R. Smith

DEVELOPMENT COMMITTEE

Kimberly Brecko
Katherine Drew
Nancy Gonzalez Heer
Marvin Kaiser
Jeanette Lewis

Max Miller
Chris Oxley
Rod Pitman
Janet Voss

RESOURCE COUNCIL

Les Badden
John Branam
Tom Cirillo
Linda Doyle
Tim DuRoche
Peg Malloy
Sean Morgan
Tina Olsen
Vivian Scott
Cheryl Snow
David Wynde

ADVOCACY COMMITTEE

Chris Celauro
Tim DuRoche
Natalie Garyet
Barry Johnson
Joe Krumm
Henry Moreno
Karen Stein
Kimberly Brecko
Kate Clark
Sam Ellingson
Catherine Epstein
Abbie Hebein
Katie Herro
Ashley Klump
Emily Morris
Contessa Trujillo
Dianna Fontes
Rachel Greben
Alicia Hamilton
Sarah Link
Kally Pelkey
Kim Strelchun

ANY GIVEN CHILD COMMUNITY ARTS TEAM

Tom Breuckman
Tim Drilling
Tim DuRoche
Michelle Fujii
Kassandra Gruener
Denis Hickey
Kali Ladd
Elaine Luckenbaugh
Ross McKeen
Carole Morse
Tina Olsen
Jon Pedé
Kathi Robinson

Carin Rosenberg
Carol R. Smith
Joel Stuart
Joseph Suggs
David Wynde

APPRENTICES

Daniel Casto
Natalie Garyet
Joel Holland
Holly Renton
Anna Rigby
Sarah Tracey

PARENT ADVOCATES

Alea Bone
Emily Beleele
Gwyn Blanton
Alea Bone
Anna King
Lisa Olson
Jenifer Rutigliano
Cyndi Smith
Tammy Vandehey
Carrie Ann Wilcox
Wendy Wilhelms

VOLUNTEERS

Erika Anderson
Marcia Argenbright
Arti Boyd
Miriam Budner
Jimena Cabello-Salazar
Cecily Caceu
Jesus Cameron
Stephanie Cordell
Christi Crowley
Emily Decarlo
Michele Field
Christopher Fontaine
Audrey Forbes
Pablo Gomez
Joel Harmon
Jackie Hooper
Frank Hunt
Paul Johnson
Sonja Kelley
Nancy Smith Klos
Ashley Klump
Josephine Kuever
Troy Linden
Diana Martin
Carlos Maya
Leslie McCollom
Mercy McNab
David Meesenburg
Katie Michels
Sarah Moody
Brenda Morales Galicia

Pat Moran
Kevin Noonan
Van Pham
Hardwick Sexton
Theresa Somrak
Kirsten Southwell
Travis Souza
Miri Stebivka
Emily Stevens
Sara Sjol
JR Wickman
Lynn Yarne

Work for Art

HONORARY CHAIRS

Carole Morse (2011-12 campaign)
Jeff Harvey (2012-13 campaign)

ADVISORY COMMITTEE

Peter Bilotta
Deborah Edward
Mike Golub
Stacey Graham
Josie Mendoza
Virginia Willard

VOLUNTEERS

Nicholas Babson
Nneka Hall
Wendy Gausch-Martinez
Sierra Lever
Miguel Lugo
Susan Myers
Anna Rigby
Sarah Tracey

Report Art Direction by
Jen Wick Studio
Copywriting and editing
by Margaret Seiler



MORE RACC ONLINE

ADVOCACY

 racc.org/advocacy

Workplace giving

 workforart.org

EDUCATION

 therightbraininitiative.org

PUBLIC ART

 racc.org/public-art

RESOURCES

Grants, jobs, calls to artists, residencies,
workshops, studio space & more

racc.org/resources

Art Spark

 portlandartspark.com

GRANTS

Guidelines and applications

 racc.org/grants

RACC.ORG



[facebook.com/
RegionalArts](https://facebook.com/RegionalArts)



[twitter.com/
r_a_c_c](https://twitter.com/r_a_c_c)