

# SW Stephenson St / Boones Ferry Rd Intersection Project

Portland City Council

January 9, 2013

# Purpose of Agenda Item

- Authorizes PBOT to acquire temporary and permanent property rights necessary for safety improvements at intersection of SW Stephenson St and Boones Ferry Road.
- Requires PBOT to perform notifications, valuations, and negotiations in accordance with ORS Chapter 35: Eminent Domain; Public Acquisition of Property

# Project Scope

- Design and construct safety improvements at intersection of SW Stephenson and Boones Ferry Road
- Resolve sight lines and stopping distance issues
- Deliver project within budget



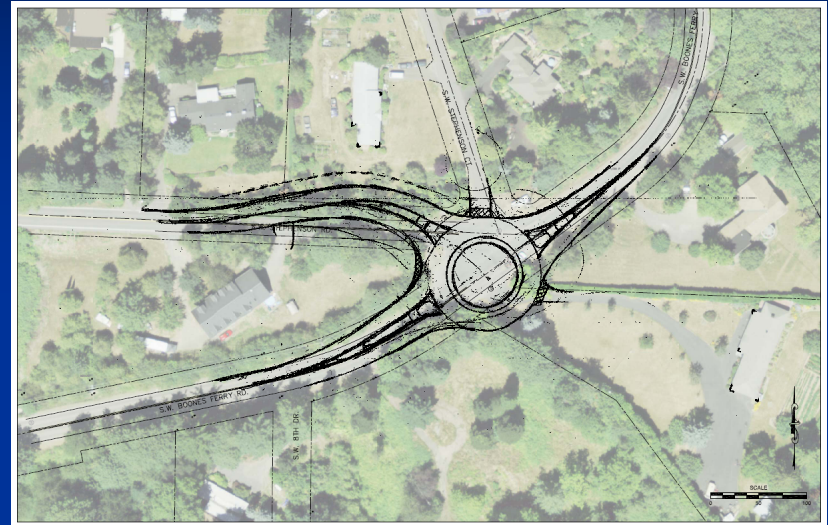
# Project Background

- 2006: City Council directed PBOT to develop design alternatives and preliminary estimates for intersection improvements.
- 2008: PBOT allocated funding for the project (System Development Charges and General Transportation Revenue).
- 2009-2010: Existing Conditions and Alternatives Analysis
- 2010-2011: Preliminary Design / Outreach to Arnold Creek Neighborhood Association
- Fall 2011 – spring 2012: Stakeholder Advisory Committee (SAC) formed to address concerns regarding proposed design and examine possible alternatives / refinements. SAC submitted recommendation in support of the project to Arnold Creek N.A.
- May 2012, Arnold Creek N.A. held a neighborhood-wide vote on the project. 99 members in attendance. 92 voted in support of project, 6 against, 1 undecided.

# Design Alternatives Considered

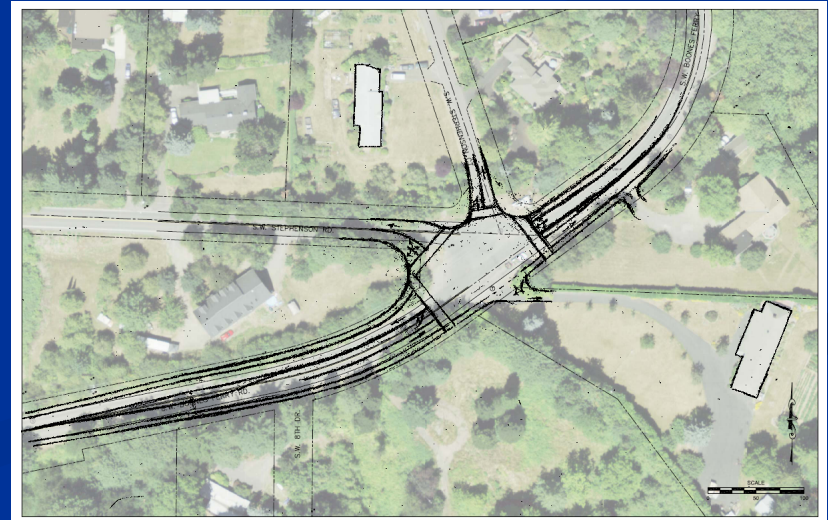
## Roundabout

- Difficult to construct / cost prohibitive
- 6 parcels impacted
- Only addresses speeding at intersection



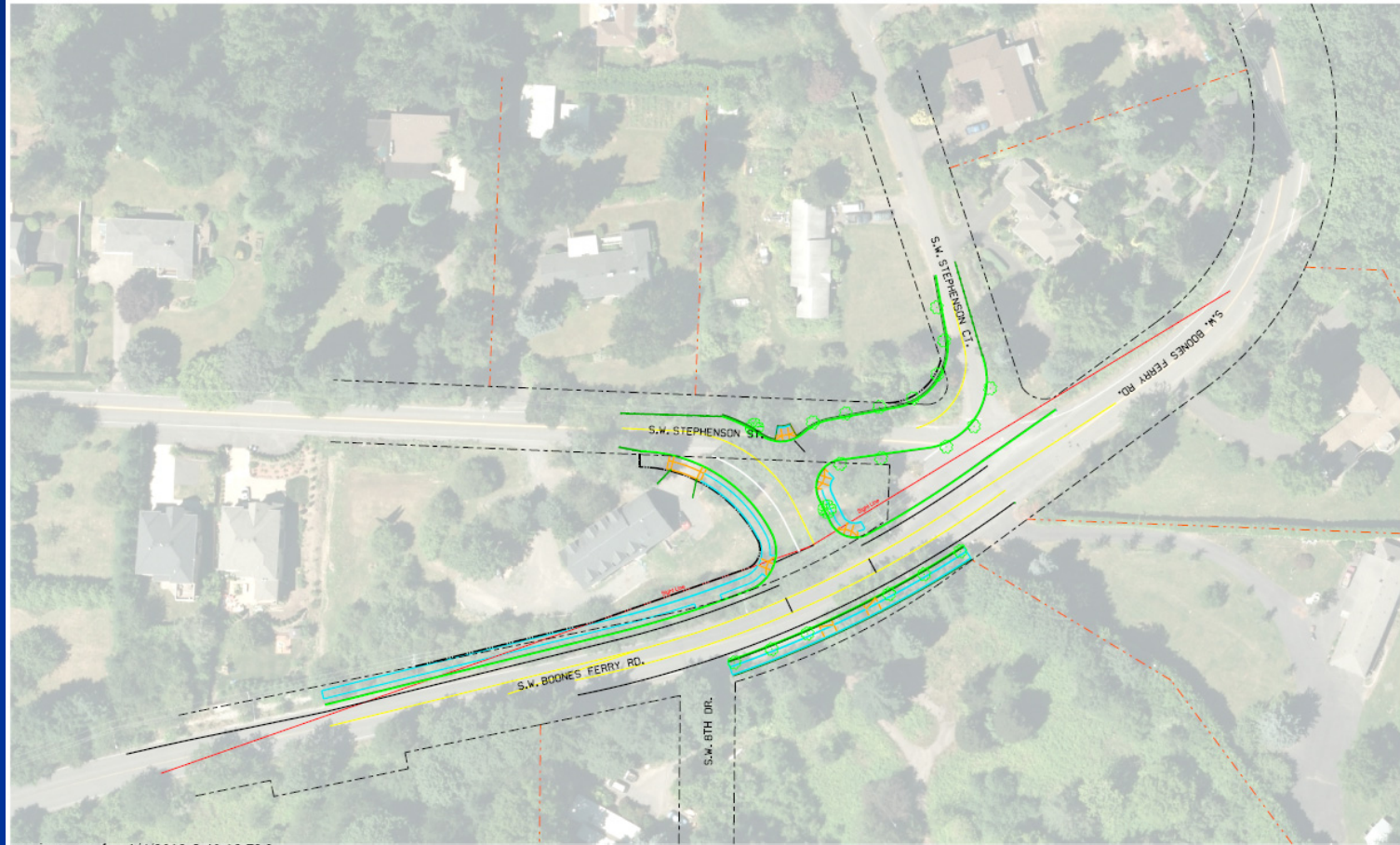
## Signalize Existing Intersection

- Inadequate stopping distance / could cause accidents
- Does not meet signal warrants





# Proposed Design: Intersection Realignment



newimprove.dgn 1/4/2013 5:40:12 PM

# Proposed Design (con't)

- Addresses sight line and stopping distance issues
- Improves safety for drivers and pedestrians at this intersection
- Does not address speeding on SW Boones Ferry
- Requires significant right-of-way acquisition

# Next Steps

## Winter-spring 2013:

- Right-of-Way Acquisition
- Final Design

## Summer-fall 2013:

- Construction