


Broadway Furniture Site


Design Advice Request


 LLOYD DISTRICT

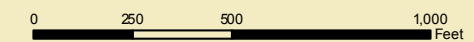
 Site Location

Light Rail Lines

 Yellow MAX Line

 Blue, Green, Red MAX Lines

 Portland Street Car



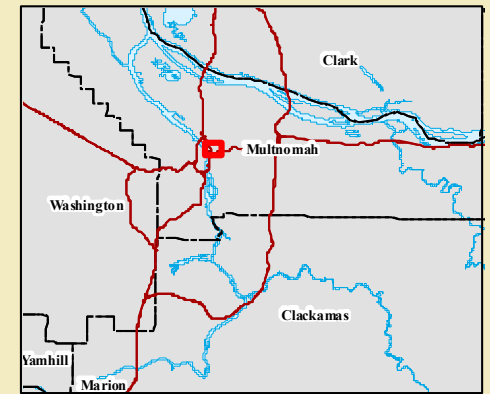
SCALE

Source Data
Metro RLIS Lite Base Data, February 2009

Geographic Projection Information
NAD 83 HARN, Oregon North
Lambert Conformal Conic



Location Map



GROUP MACKENZIE
PORTLAND OFFICE: 1115 11TH ST, SEASIDE BLDG, PORTLAND, OR 97204
Phone: 503.251.2500 | Fax: 503.251.2500 | www.groupmackenzie.com

© GROUP MACKENZIE 2006
ALL RIGHTS RESERVED

200 BROADWAY

VICINITY PLAN

DESIGN ADVICE REQUEST - JANUARY 10, 2013



SW CORNER AT 2ND AND WEIDLER



SE CORNER AT 3RD AND WEIDLER



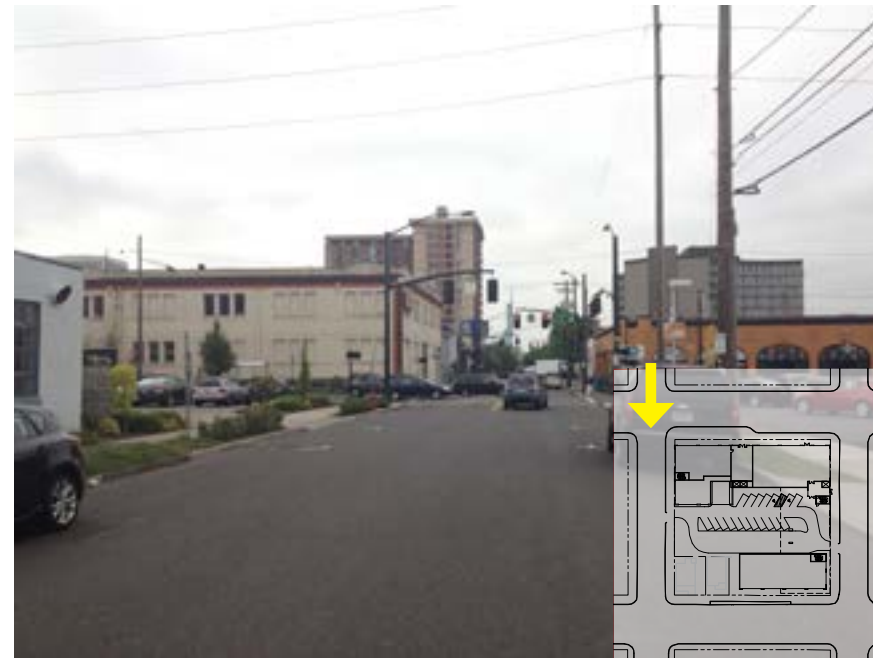
NW CORNER AT 2ND AND BROADWAY



NE CORNER AT 3RD AND BROADWAY



LOOKING SOUTH ON 3RD



LOOKING SOUTH ON 2ND



LOOKING SE ON 2ND AND WEIDLER



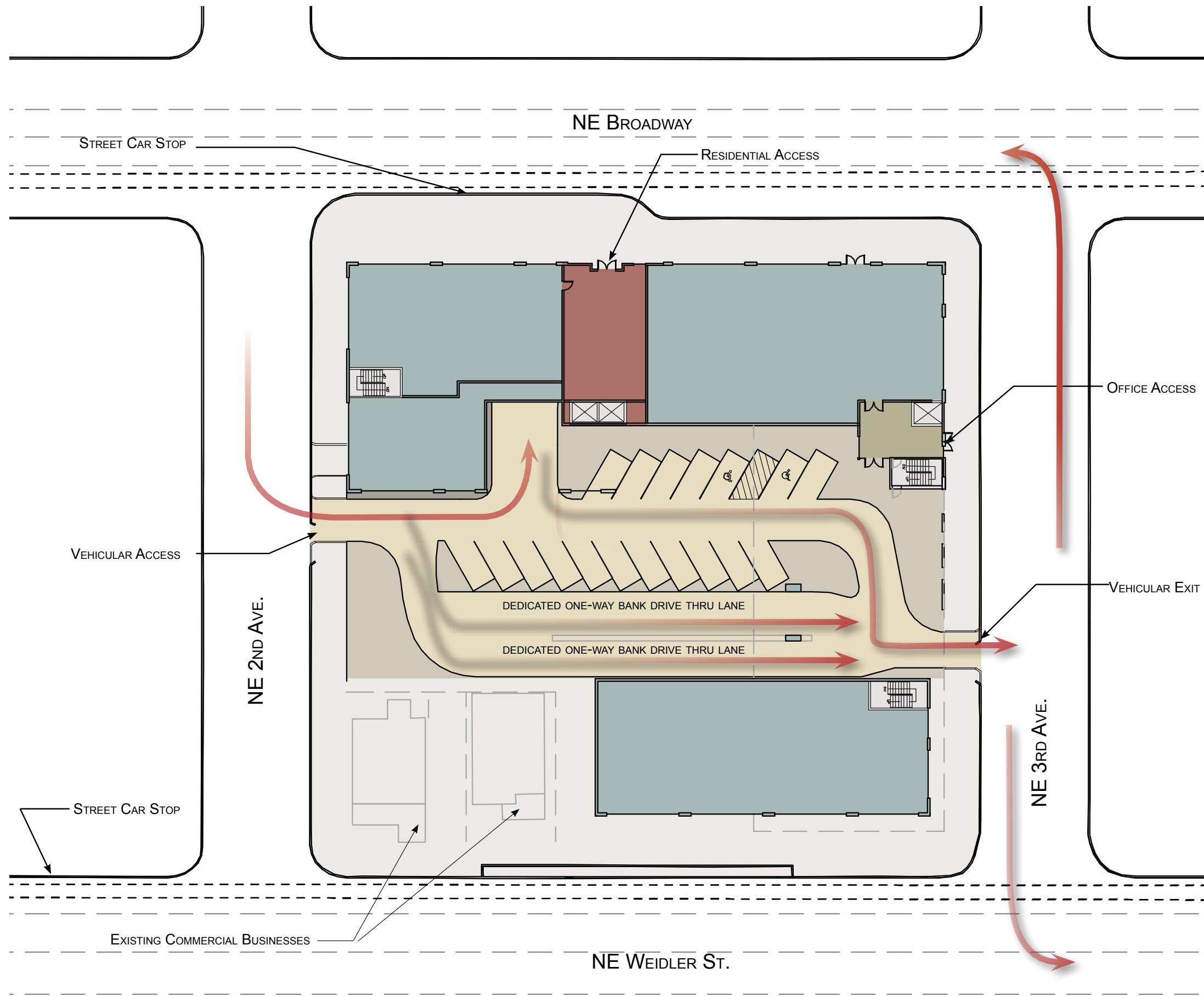
STREETCAR STOP AT SITE ON BROADWAY



LOOKING SOUTH @ MLK AND BROADWAY



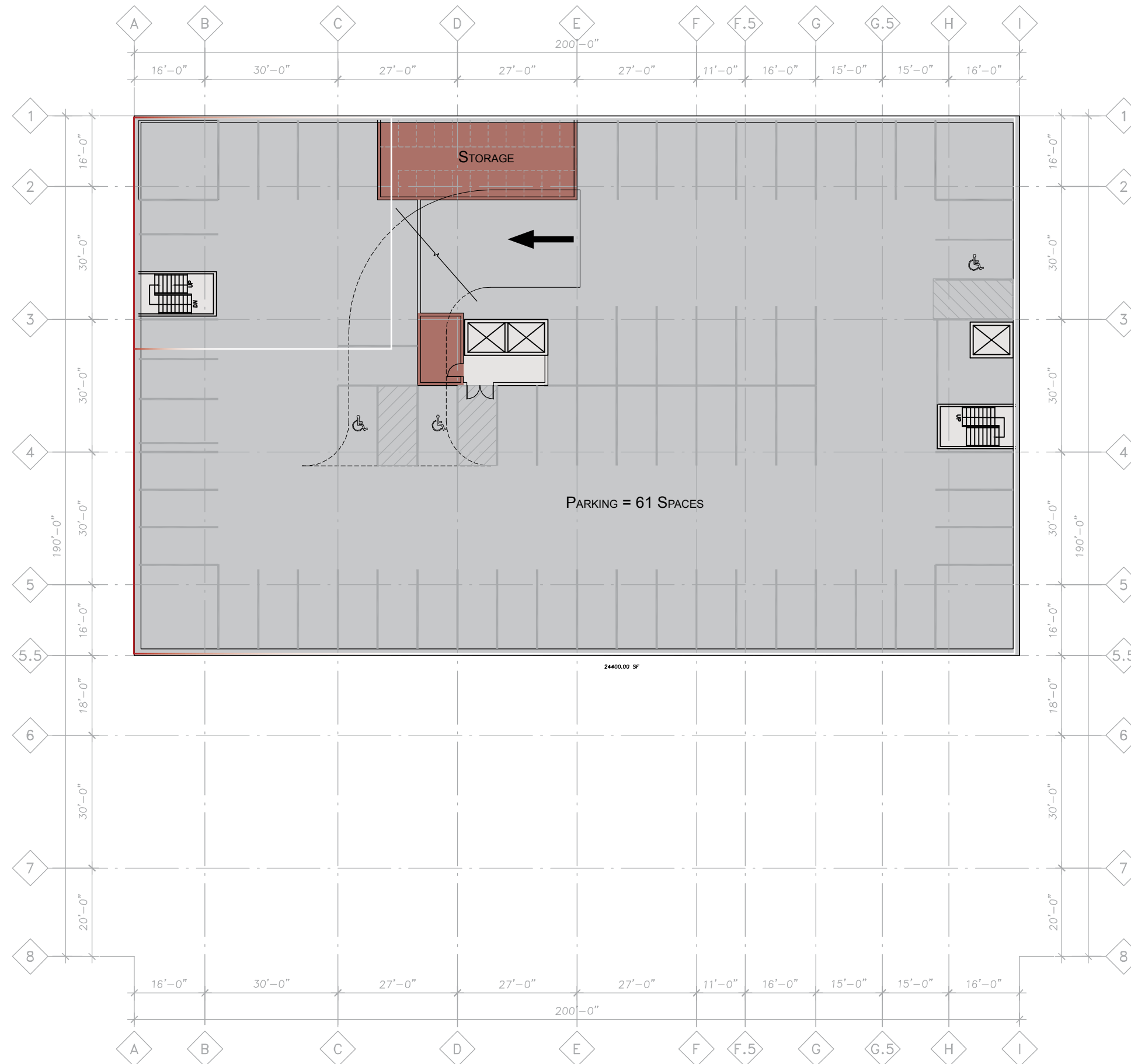
CROWNE PLAZA & CALAROGA TERRACE



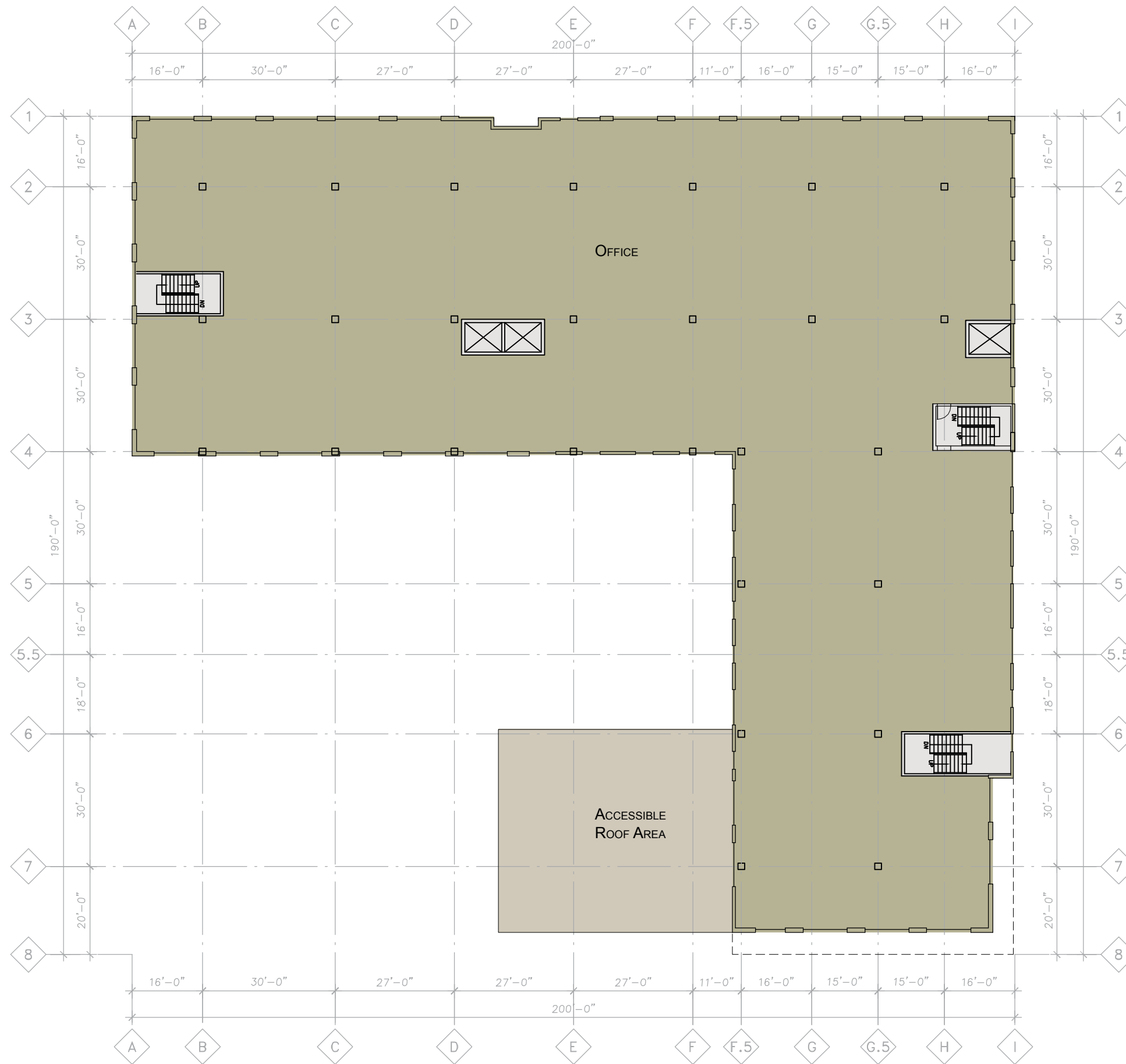
200 BROADWAY

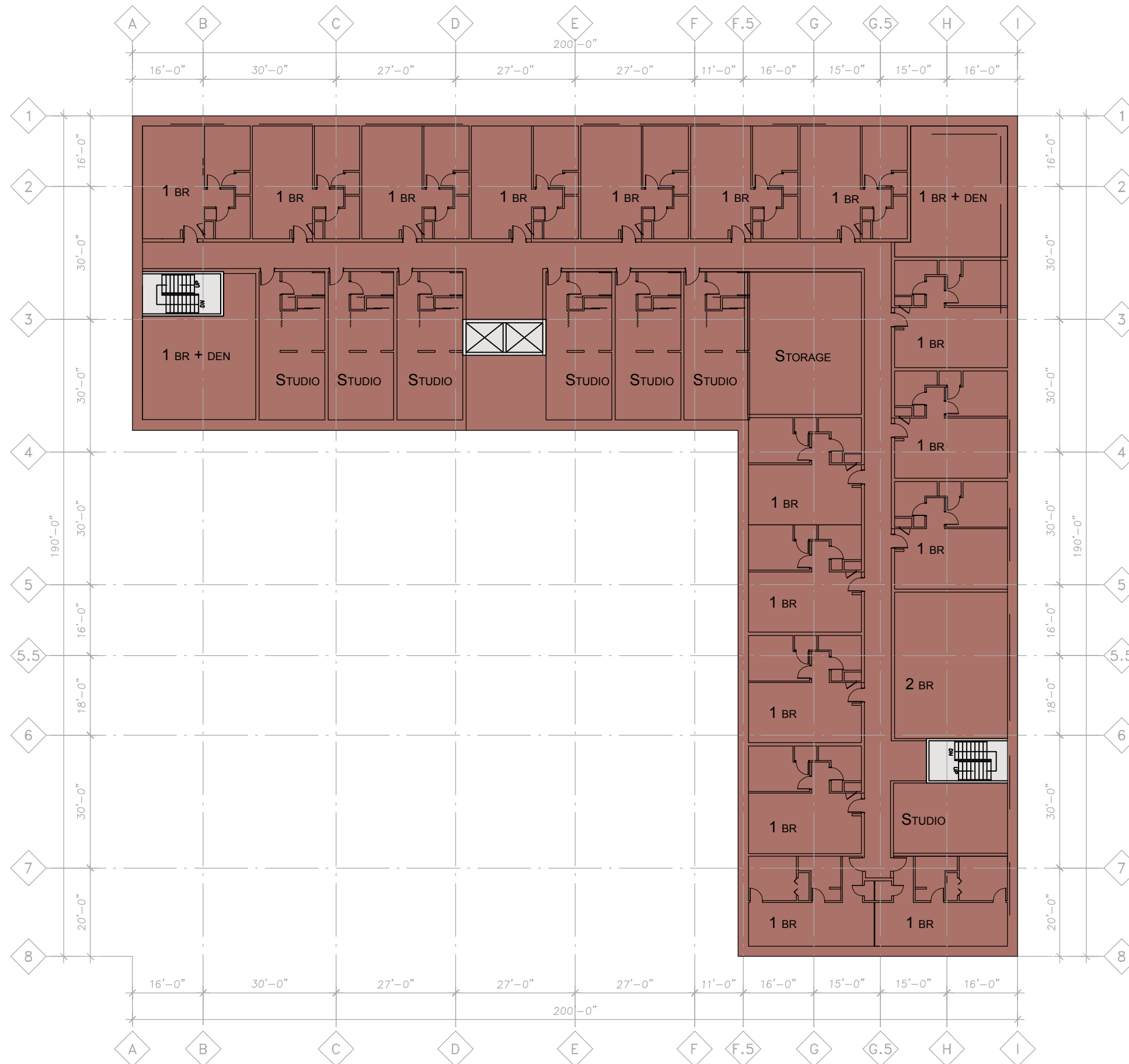
SITE CIRCULATION

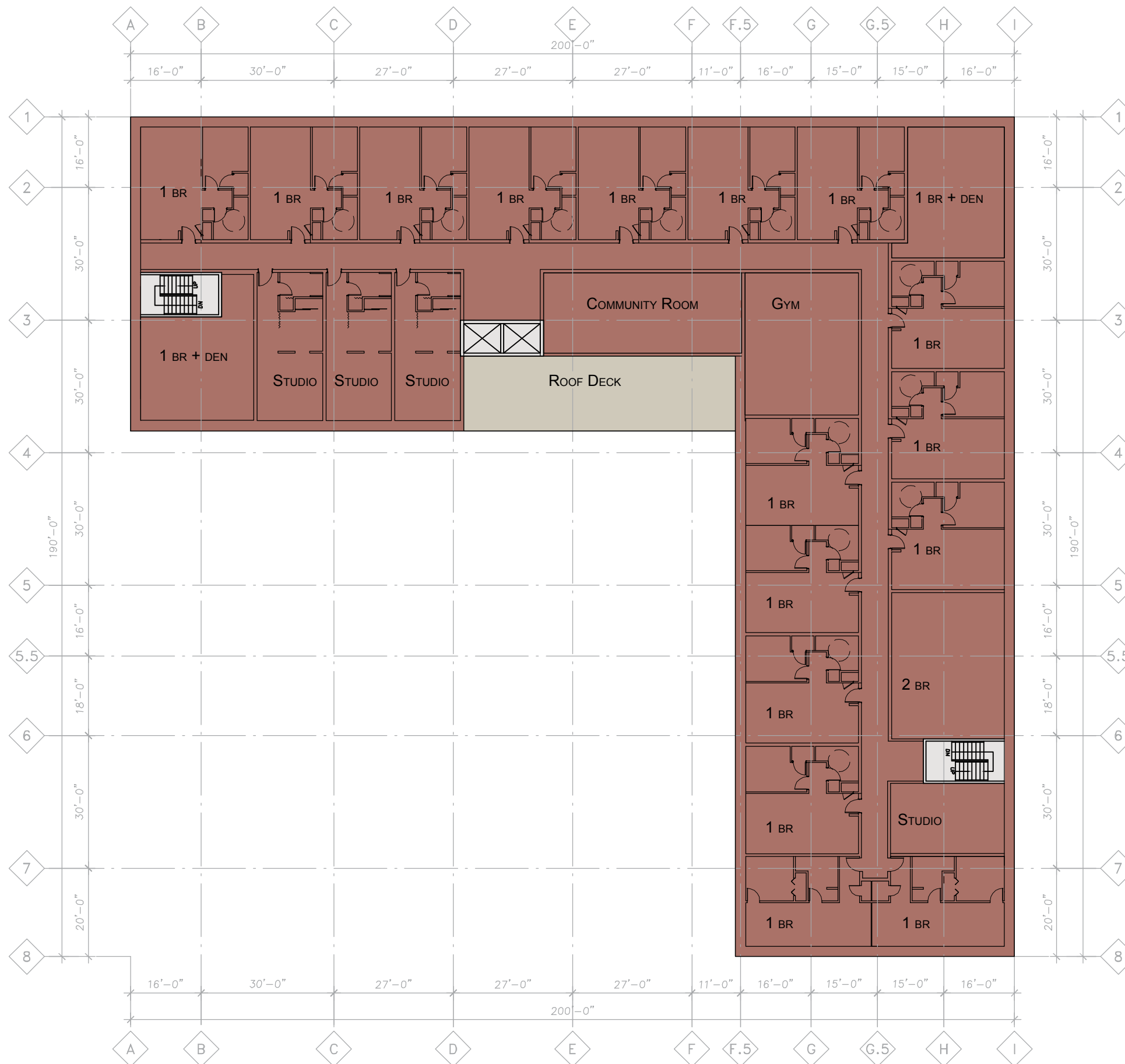
DESIGN ADVICE REQUEST - JANUARY 10, 2013

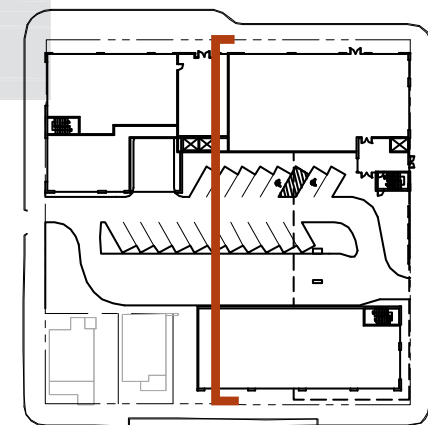
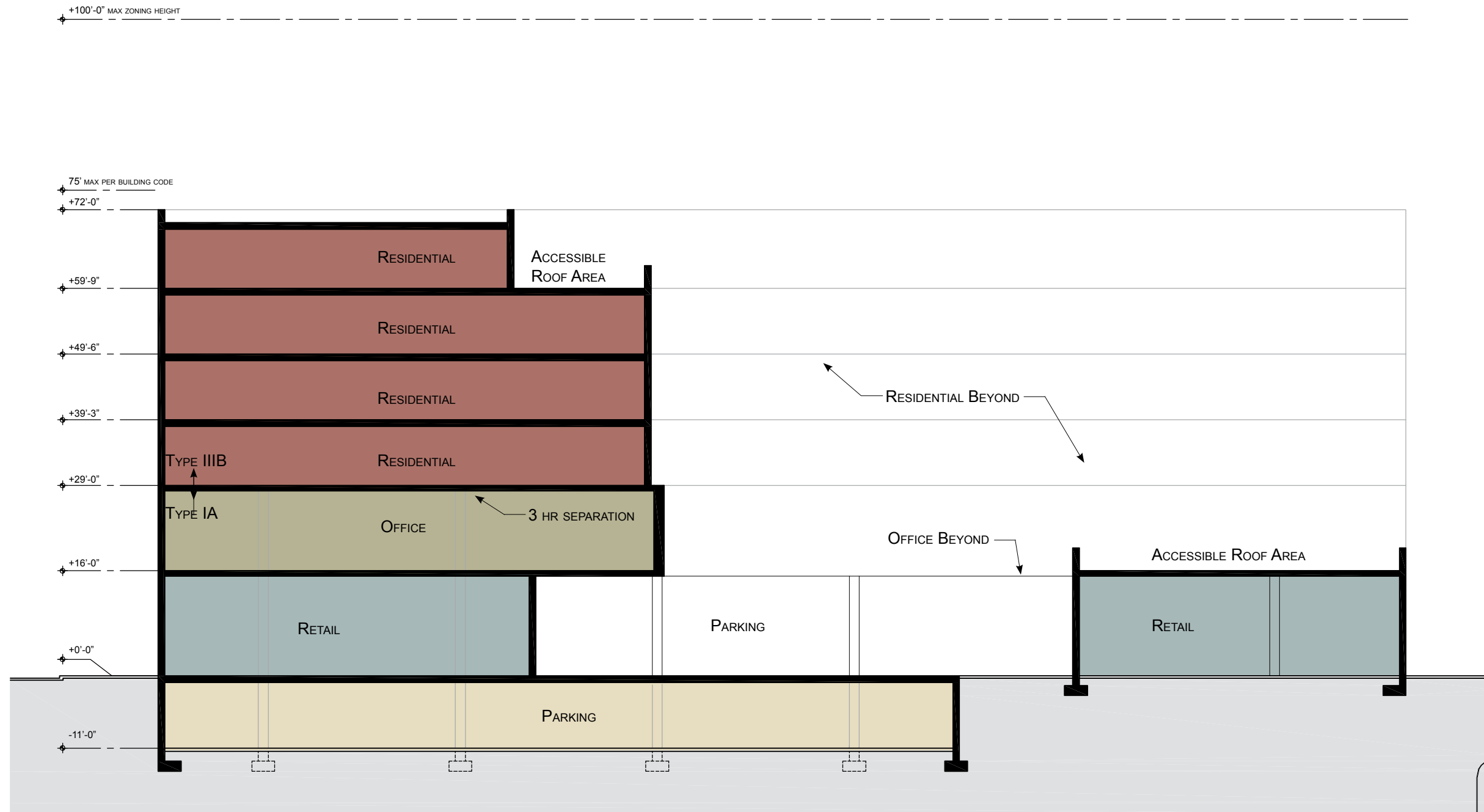


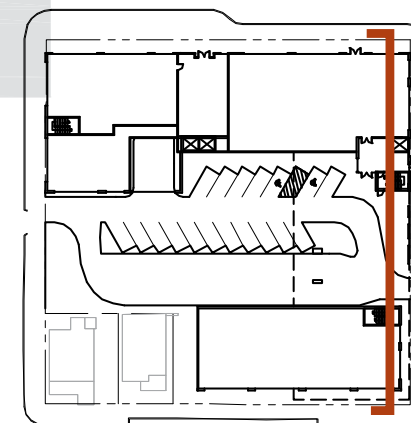
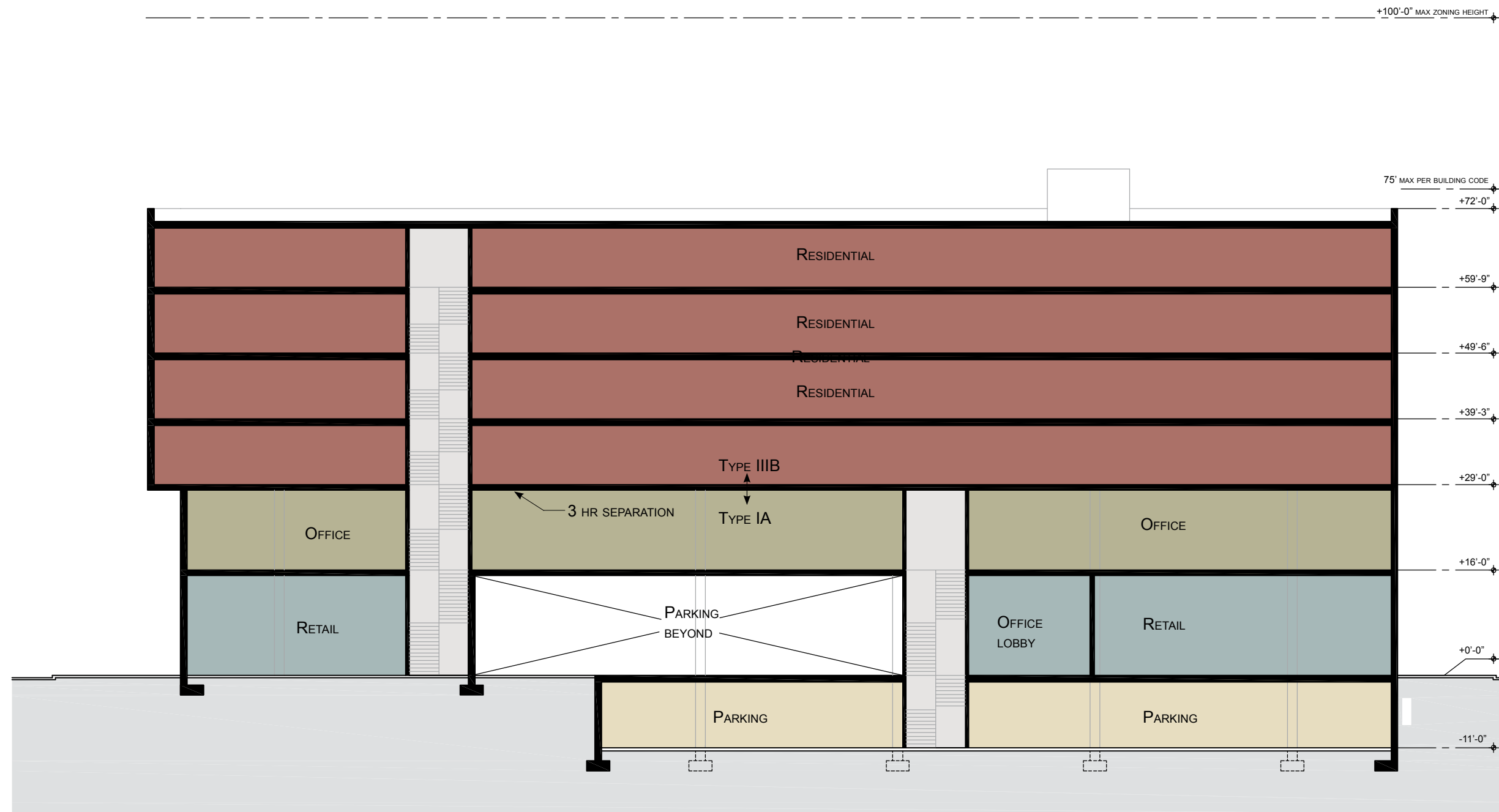














200

200 Broadway
Community

200 Broadway
Community

200 BROADWAY
AERIAL FROM NE CORNER
DESIGN ADVICE REQUEST - JANUARY 10, 2013



200 BROADWAY
AERIAL FROM SW CORNER
DESIGN ADVICE REQUEST - JANUARY 10, 2013



200 BROADWAY

AERIAL FROM SW

DESIGN ADVICE REQUEST - JANUARY 10, 2013





200 BROADWAY

AERIAL FROM 2ND AVE

DESIGN ADVICE REQUEST - JANUARY 10, 2013





200 BROADWAY

VIEW FROM SE CORNER

DESIGN ADVICE REQUEST - JANUARY 10, 2013



200 BROADWAY

3RD AVENUE ENTRANCE

DESIGN ADVICE REQUEST - JANUARY 10, 2013



200 BROADWAY
NW AERIAL

DESIGN ADVICE REQUEST - JANUARY 10, 2013



200 BROADWAY

NW AERIAL

DESIGN ADVICE REQUEST - JANUARY 10, 2013