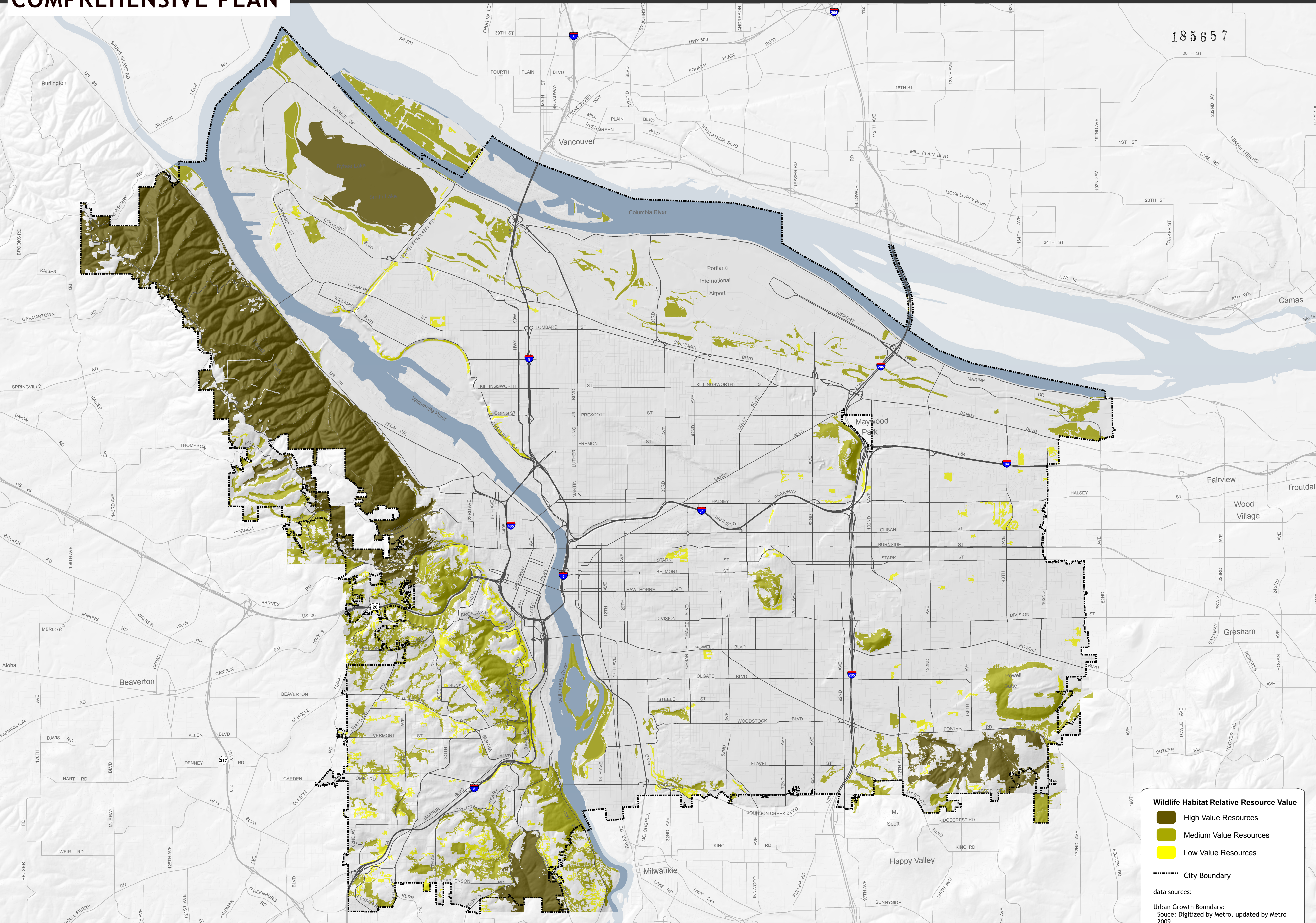


Wildlife Habitat Function - Relative Resource Value NRI-15

BUILDABLE LANDS

COMPREHENSIVE PLAN



185657

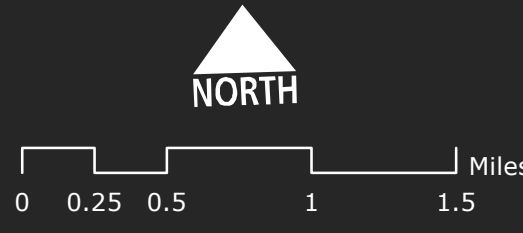
Wildlife Habitat Relative Resource Value

- High Value Resources
- Medium Value Resources
- Low Value Resources

----- City Boundary

data sources:
Urban Growth Boundary:
Source: Digitized by Metro, updated by Metro 2009.

City Boundary:
Digitized and updated by PDOT and Bureau of Planning and Sustainability, 2009.
Registered to taxlot base maps.



Bureau of Planning and Sustainability
Innovation. Collaboration. Practical Solutions.
City of Portland, Oregon
Sam Adams, Mayor • Susan Anderson, Director



June 5, 2012 City of Portland | Bureau of Planning and Sustainability | Geographic Information System
The information on the map was derived from digital data-bases on the City of Portland, Bureau of Planning and Sustainability GIS. Care was taken in the creation of this map but it is provided "as is". The City of Portland cannot accept any responsibility for error, omissions, or positional accuracy, and therefore, there are no warranties which accompany this product. However, notification of any errors will be appreciated.
This work was supported in part by a periodic review grant from the Oregon Department of Land Conservation and Development.