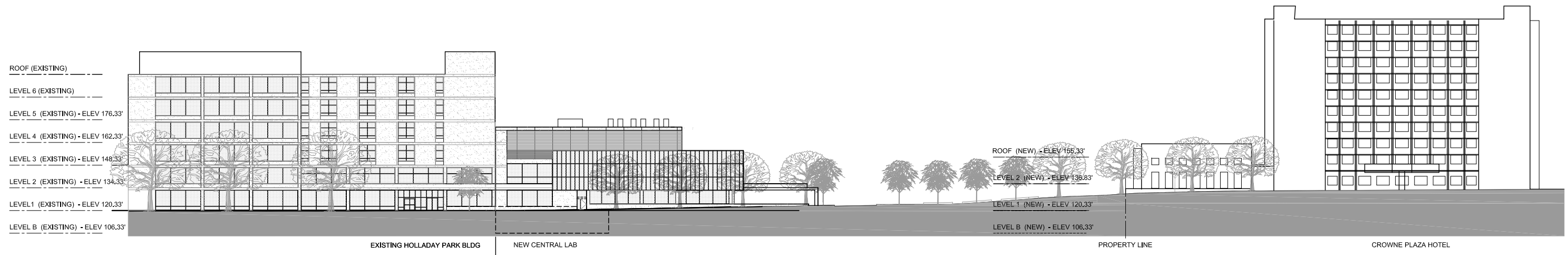
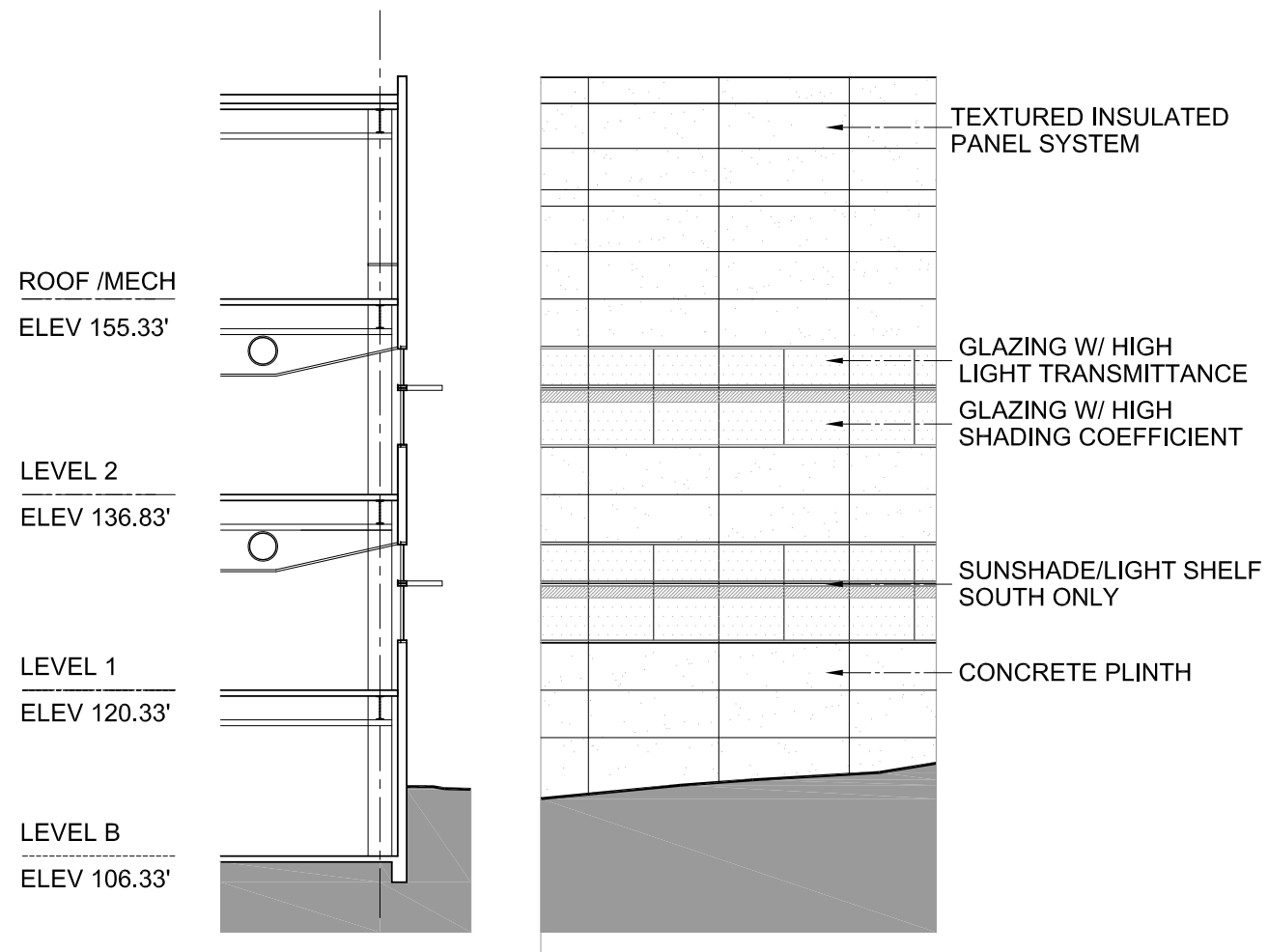


East Elevation - NE 2nd Avenue - Partial Floor Future Expansion

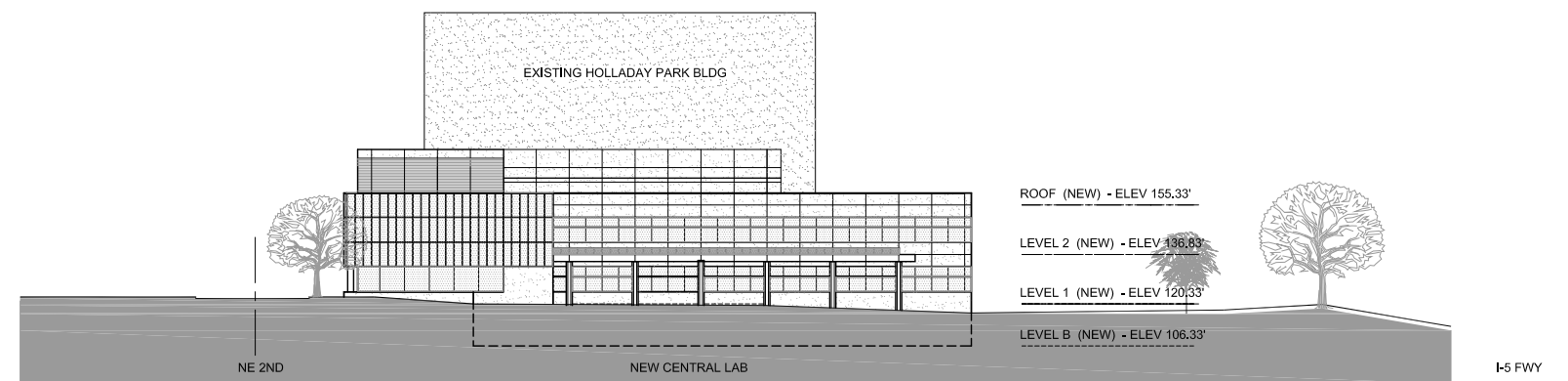


East Elevation - NE 2nd Avenue

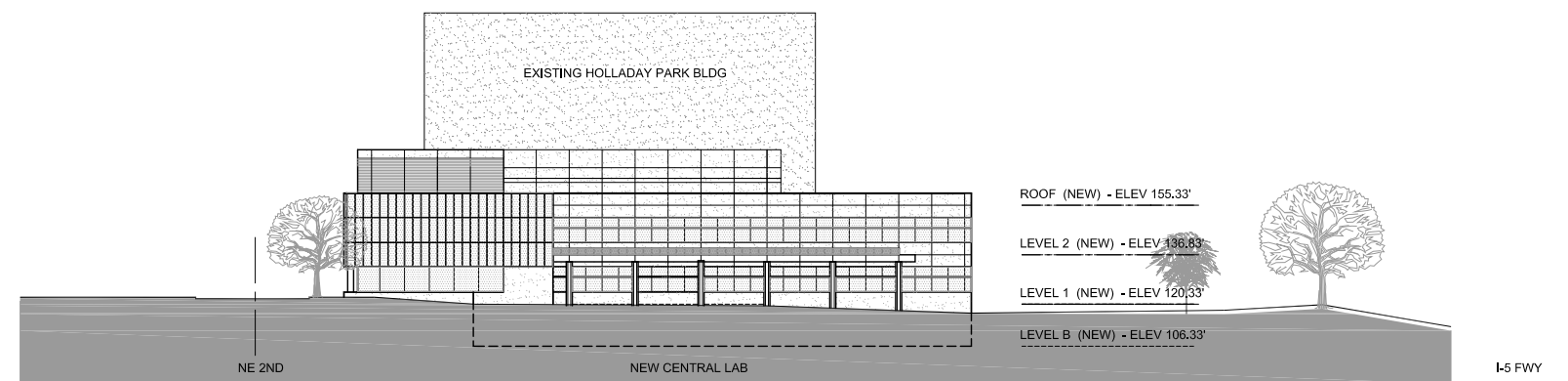




Detail Wall Section / Elevation

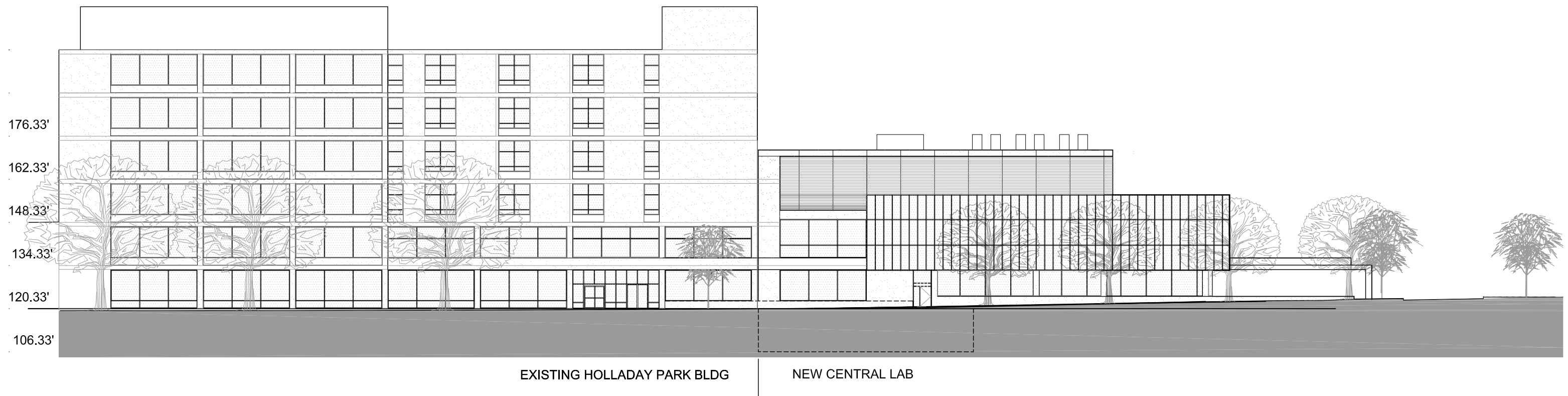


North Elevation - Partial Floor Future Expansion



North Elevation





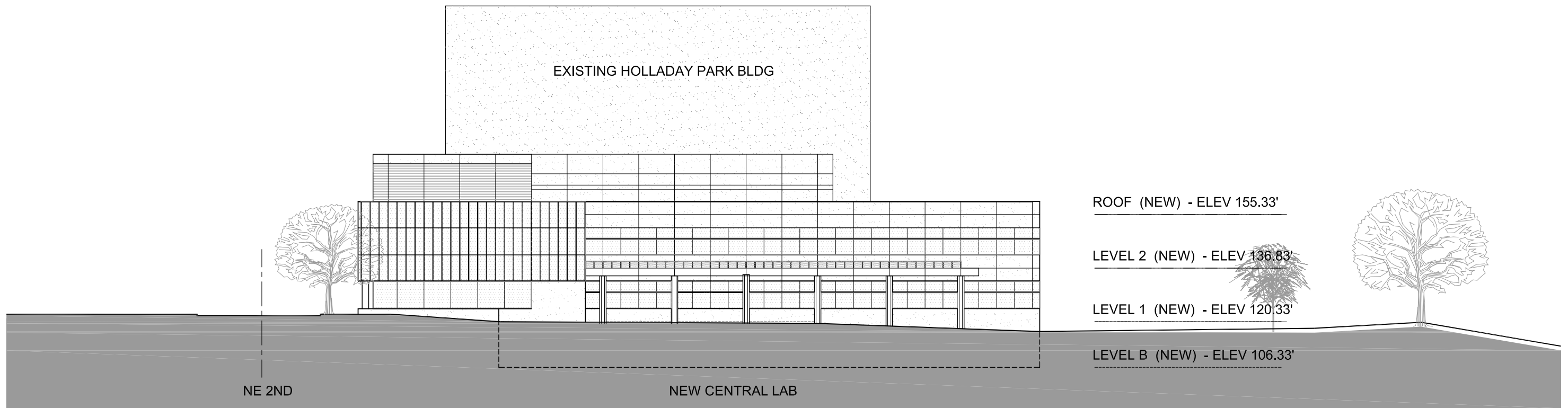
East Elevation - NE 2nd Avenue



Schematic Elevations  
 LEGACY HOLLADAY PARK  
 Central Lab Relocation

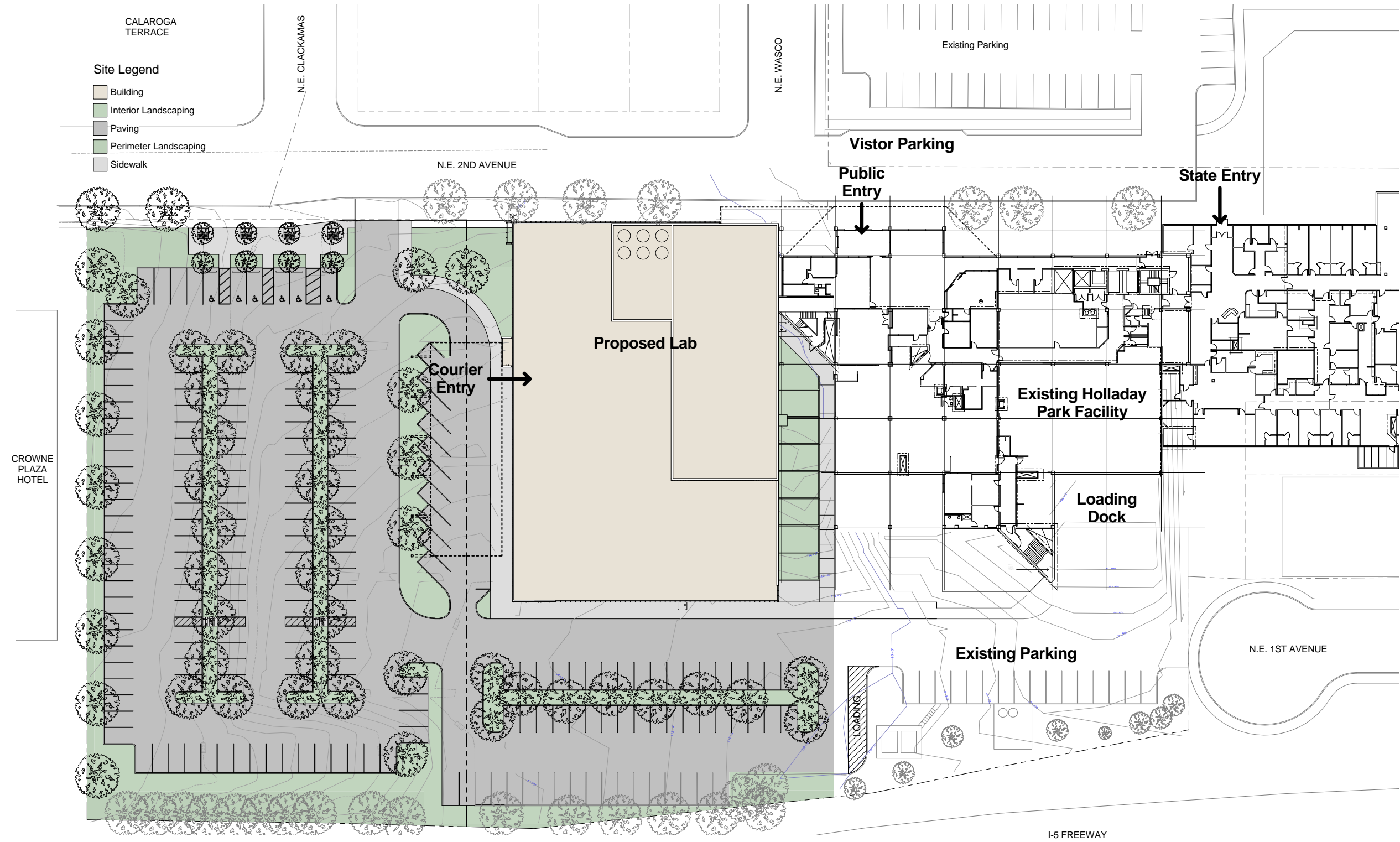
NOVEMBER 27, 2012

No Scale



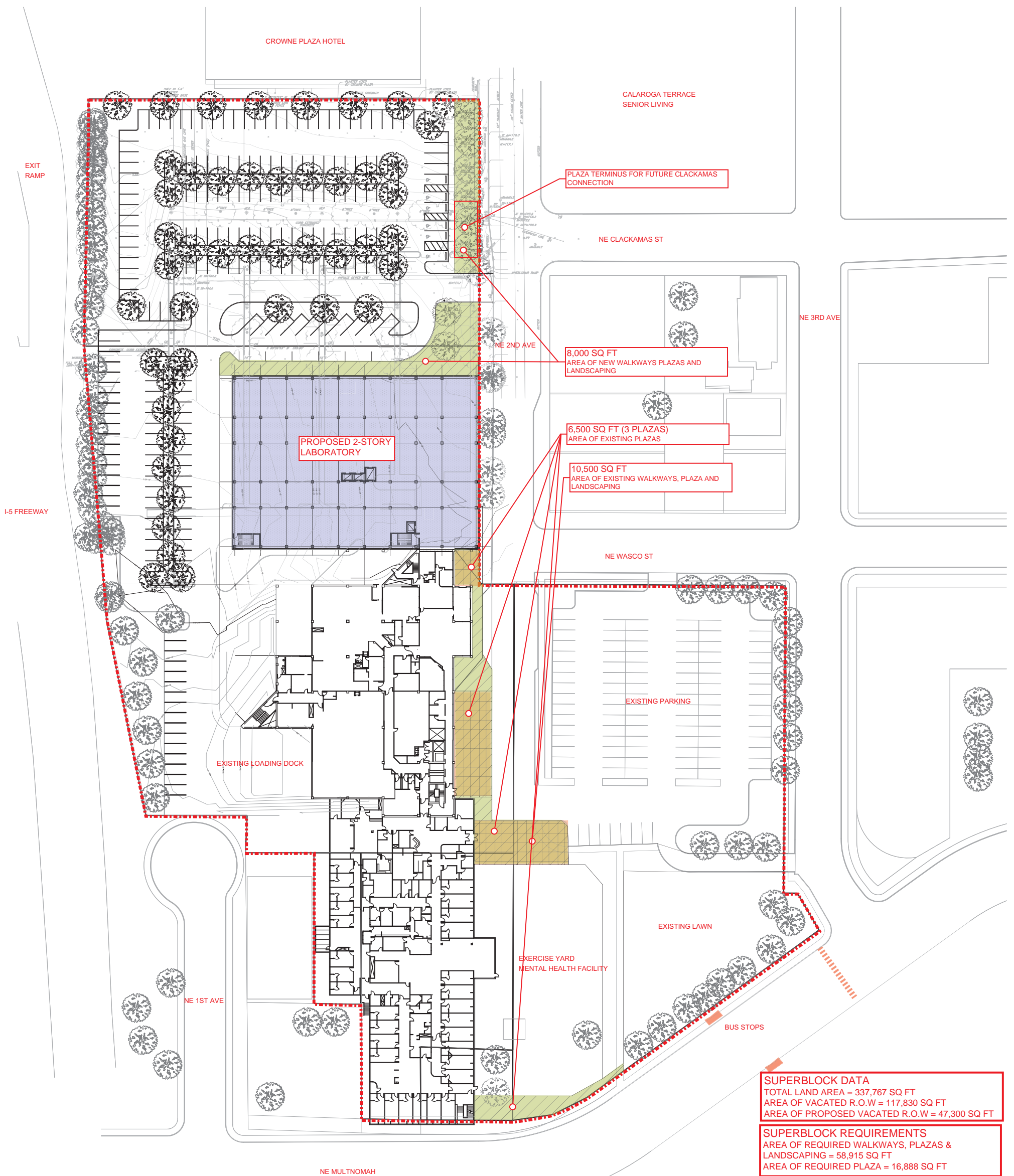
North Elevation





LEGACY HOLLADAY PARK  
 CENTRAL LABORATORY RELOCATION PROJECT  
**Superblock Requirements Met**  
 November 27, 2012

Requirements Met						
	Modified Requirements (in square feet)	Existing Today	w/ New Central Lab	w/ S.E. Parcel Development	Total Met Requirements All Phases	Remaining to be Met
Super-Block Walkways, Plazas, & Landscaping	23,650	10,050	8,000	6,450	24,500	0
Super-Block Plazas	16,888	6,500	0	0	6,500	10,388
Development % of Super Block			40%	28%		



PLAZA TERMINUS FOR FUTURE CLACKAMAS CONNECTION

8,000 SQ FT  
AREA OF NEW WALKWAYS PLAZAS AND LANDSCAPING

6,500 SQ FT (3 PLAZAS)  
AREA OF EXISTING PLAZAS

10,500 SQ FT  
AREA OF EXISTING WALKWAYS, PLAZA AND LANDSCAPING

**SUPERBLOCK DATA**  
 TOTAL LAND AREA = 337,767 SQ FT  
 AREA OF VACATED R.O.W = 117,830 SQ FT  
 AREA OF PROPOSED VACATED R.O.W = 47,300 SQ FT

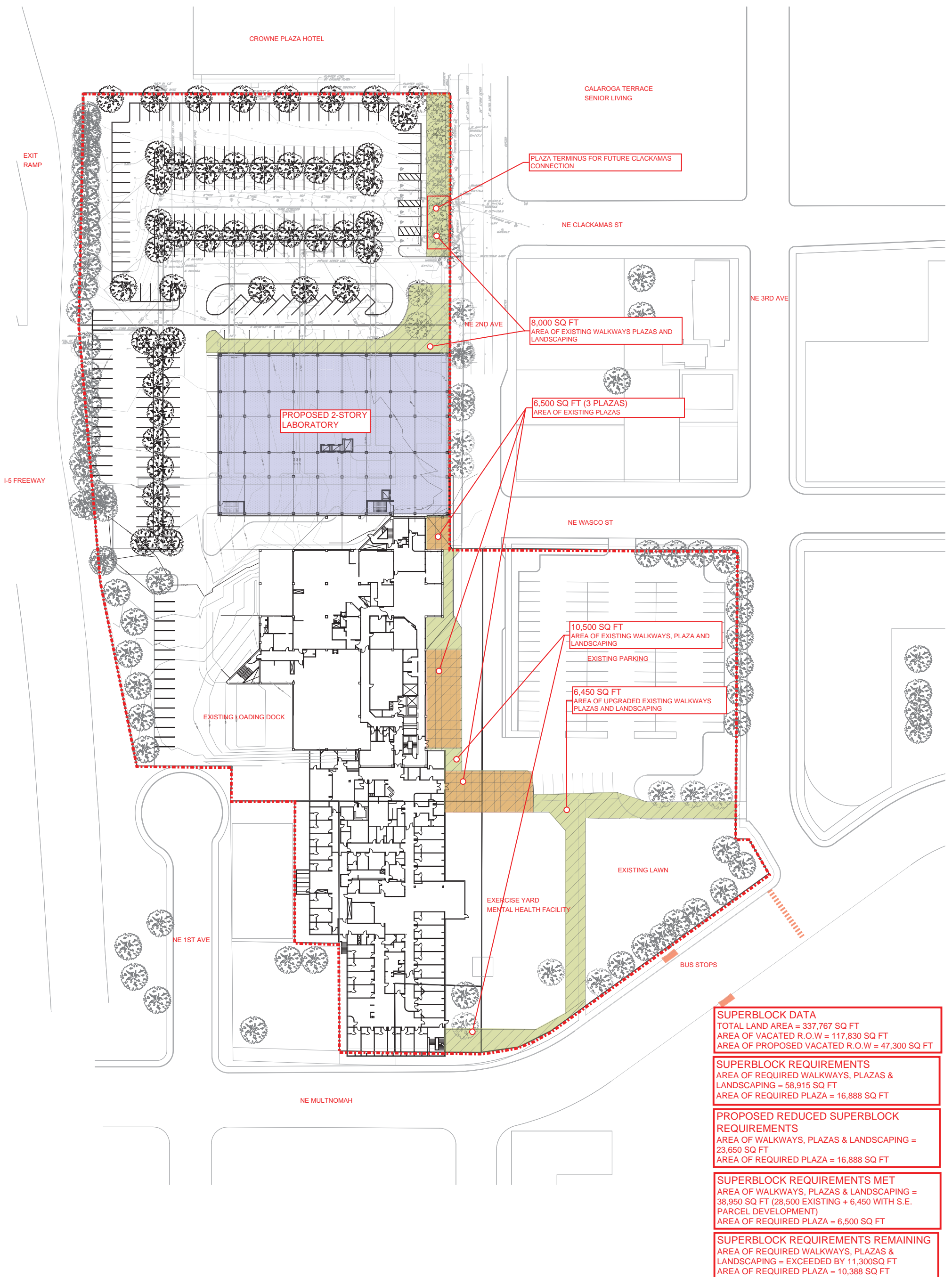
**SUPERBLOCK REQUIREMENTS**  
 AREA OF REQUIRED WALKWAYS, PLAZAS & LANDSCAPING = 58,915 SQ FT  
 AREA OF REQUIRED PLAZA = 16,888 SQ FT

**PROPOSED REDUCED SUPERBLOCK REQUIREMENTS**  
 AREA OF WALKWAYS, PLAZAS & LANDSCAPING = 23,650 SQ FT  
 AREA OF REQUIRED PLAZA = 16,888 SQ FT

**SUPERBLOCK REQUIREMENTS MET**  
 AREA OF WALKWAYS, PLAZAS & LANDSCAPING = 28,500 SQ FT (10,500 EXISTING + 8,000 WITH NEW LAB BUILDING)  
 AREA OF REQUIRED PLAZA = 6,500 SQ FT

**SUPERBLOCK REQUIREMENTS REMAINING**  
 AREA OF REQUIRED WALKWAYS, PLAZAS & LANDSCAPING = EXCEEDED BY 4,850 SQ FT  
 AREA OF REQUIRED PLAZA = 10,388 SQ FT





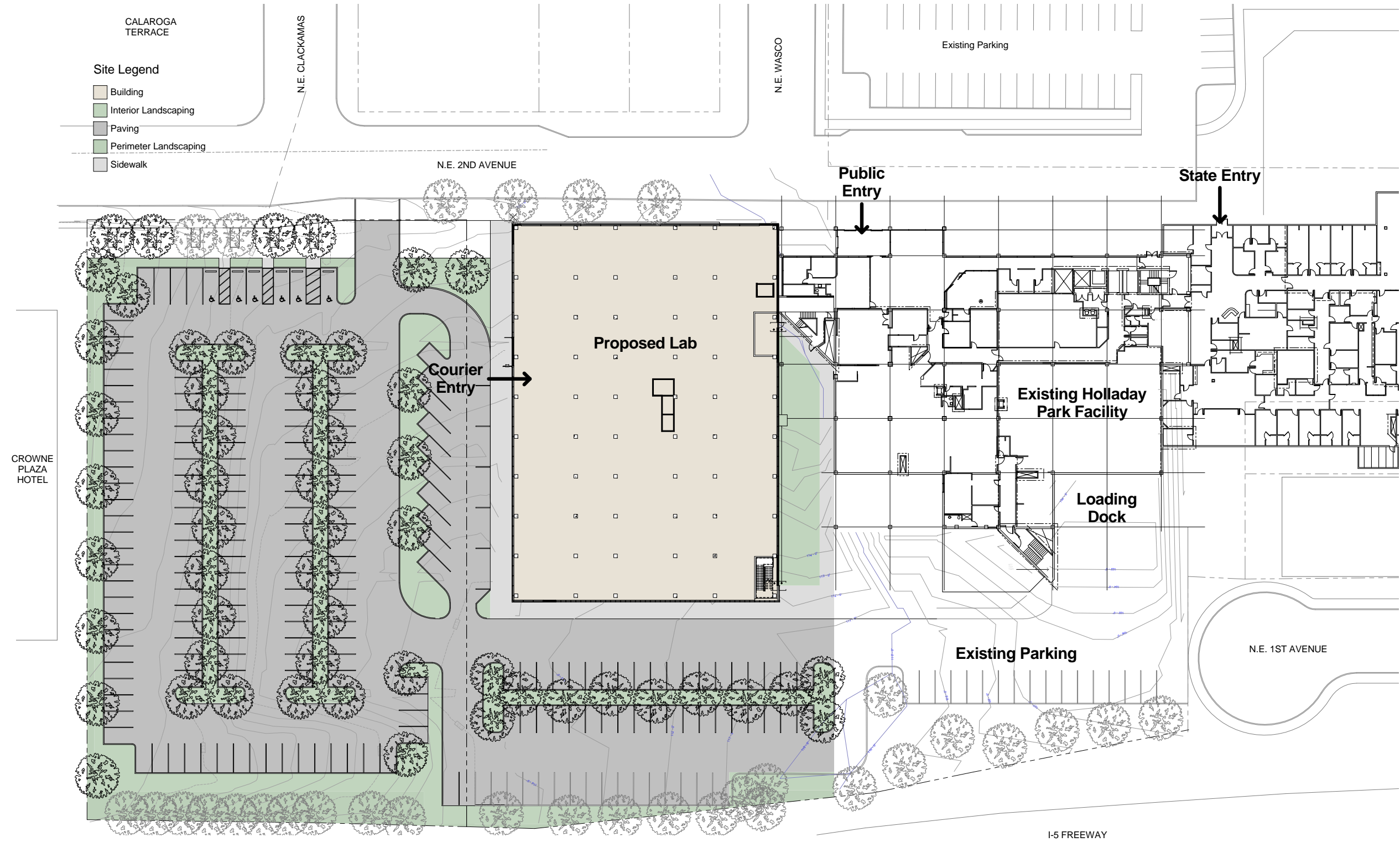
PROPOSED SITE - w/ S.E. PARCEL DEVELOPMENT

LEGACY HOLLADAY PARK  
Central Lab Relocation Project

NOVEMBER 27, 2012

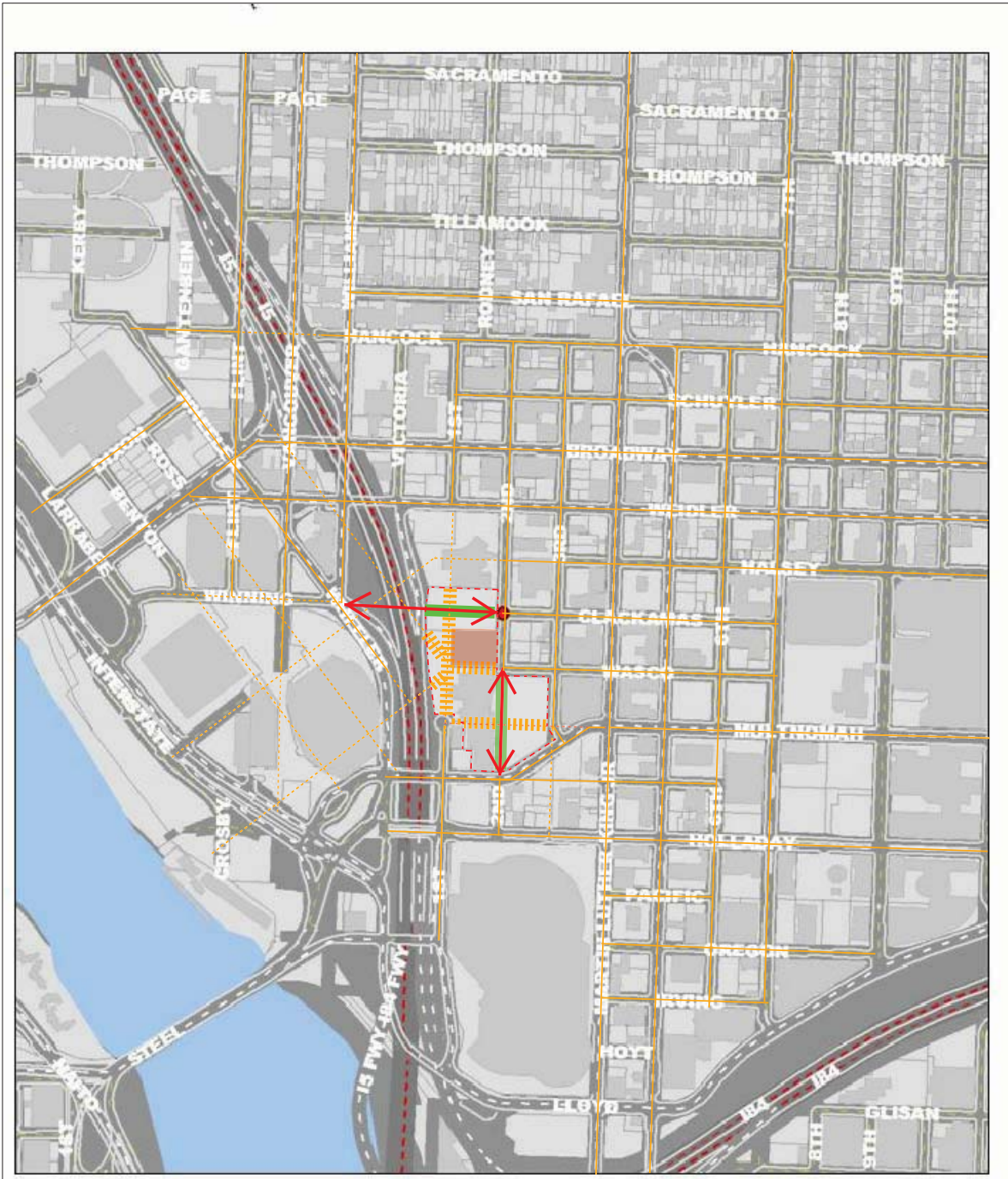


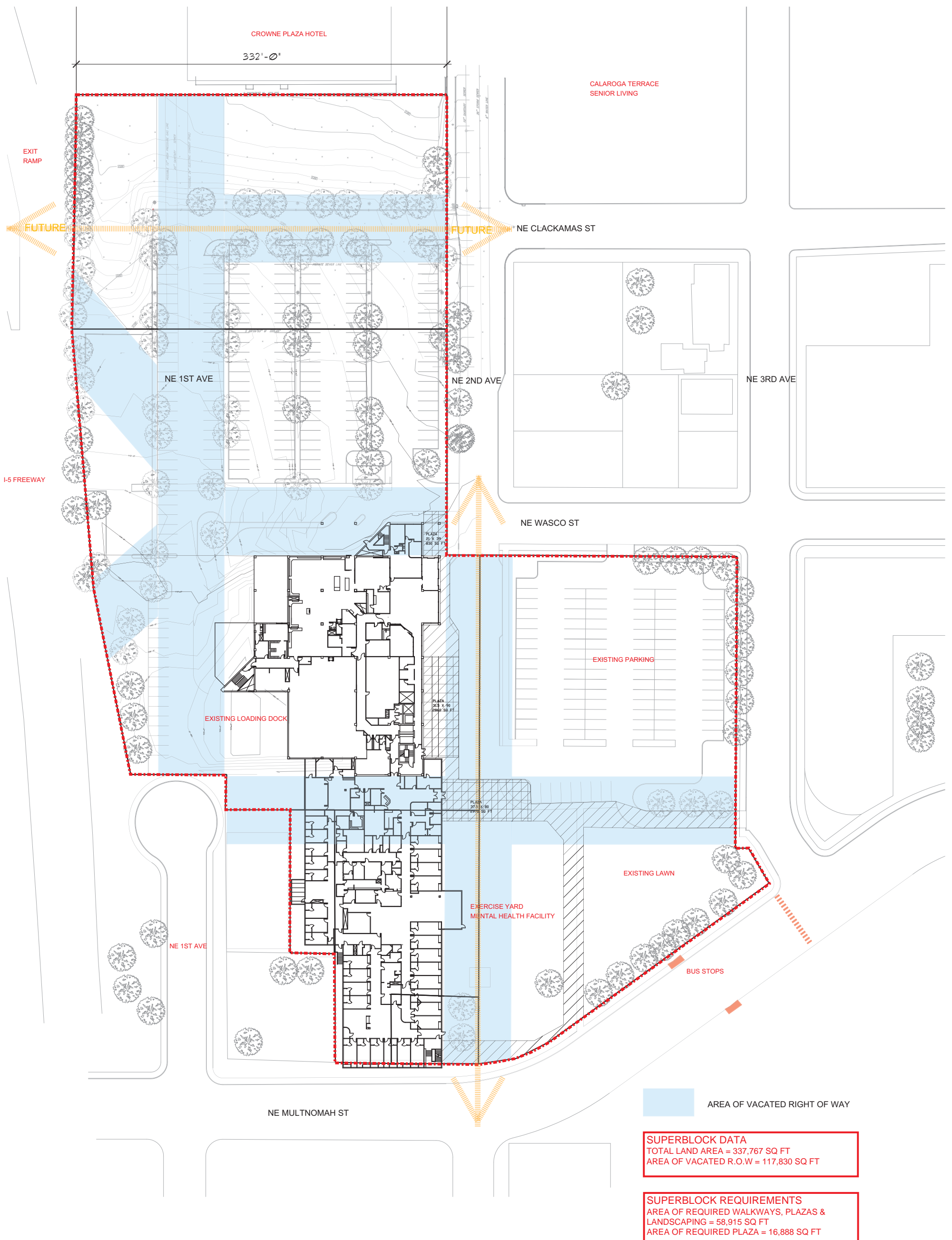


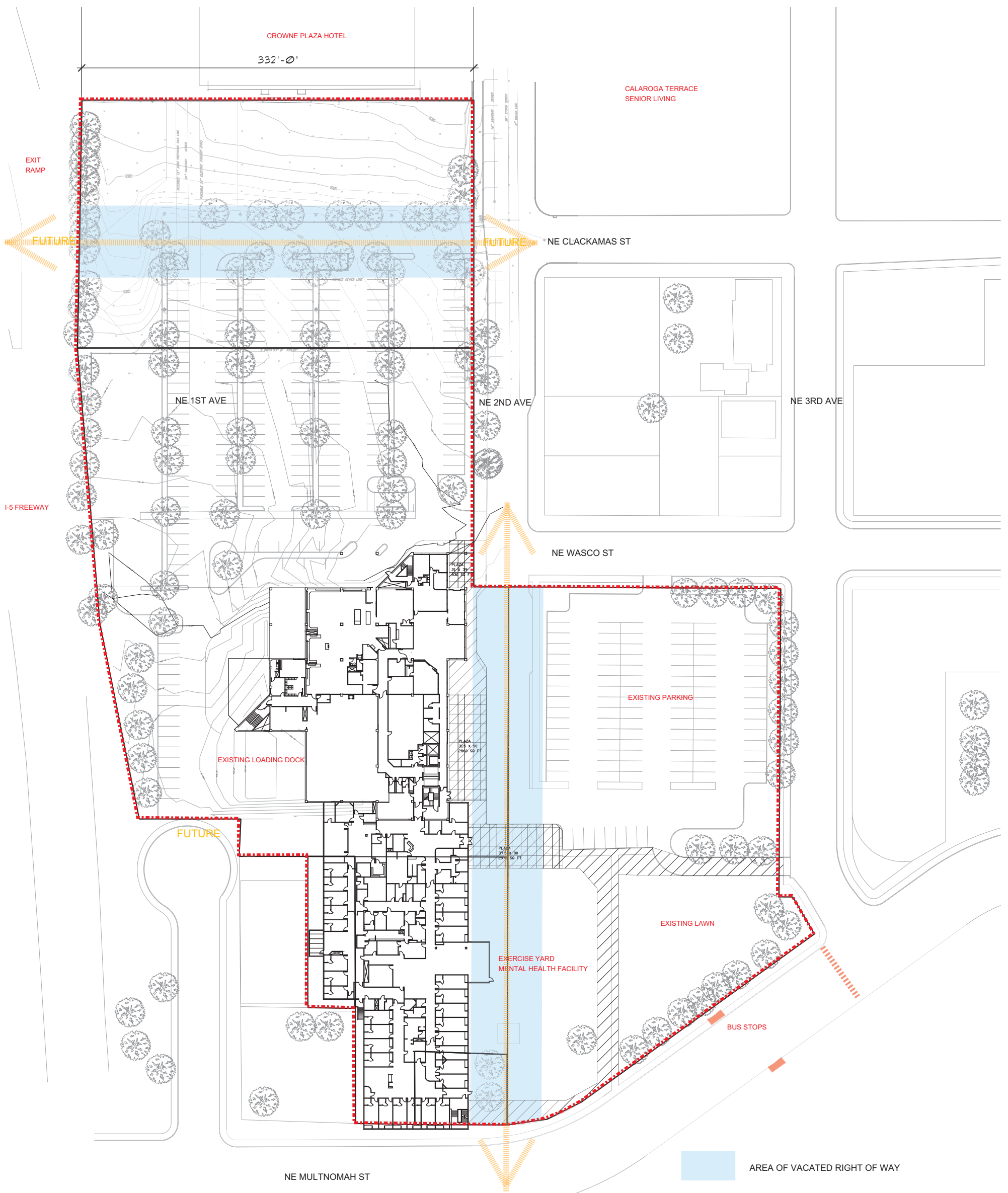


LEGACY HOLLADAY PARK  
 CENTRAL LABORATORY RELOCATION PROJECT  
**Superblock Requirements**  
 November 27, 2012

	<b>Previous Calculations Required (in square feet)</b>	<b>Modified Calculations Required</b>	<b>Reduction</b>	<b>% of Reduction</b>
<b>Total Land Area</b>	337,767	<b>337,767</b>		
<b>Area of Vacated R.O.W.</b>	117,830	<b>47,300</b>	<b>70,530</b>	<b>60%</b>
<b>Super-Block Requirements Walkways, Plazas, &amp; Landscaping</b>	58,915	<b>23,650</b>	<b>35,265</b>	<b>60%</b>
<b>Super-Block Requirements Plazas required</b>	16,888	<b>16,888</b>	<b>0</b>	<b>0%</b>







<b>SUPERBLOCK DATA</b> TOTAL LAND AREA = 337,767 SQ FT AREA OF PROPOSED VACATED R.O.W = 47,300 SQ FT
<b>SUPERBLOCK REQUIREMENTS</b> AREA OF REQUIRED WALKWAYS, PLAZAS & LANDSCAPING = 23,650 SQ FT AREA OF REQUIRED PLAZA = 16,888 SQ FT

