



Growth Scenarios Report Preview

December 11th, 2012

Planning and Sustainability Commission



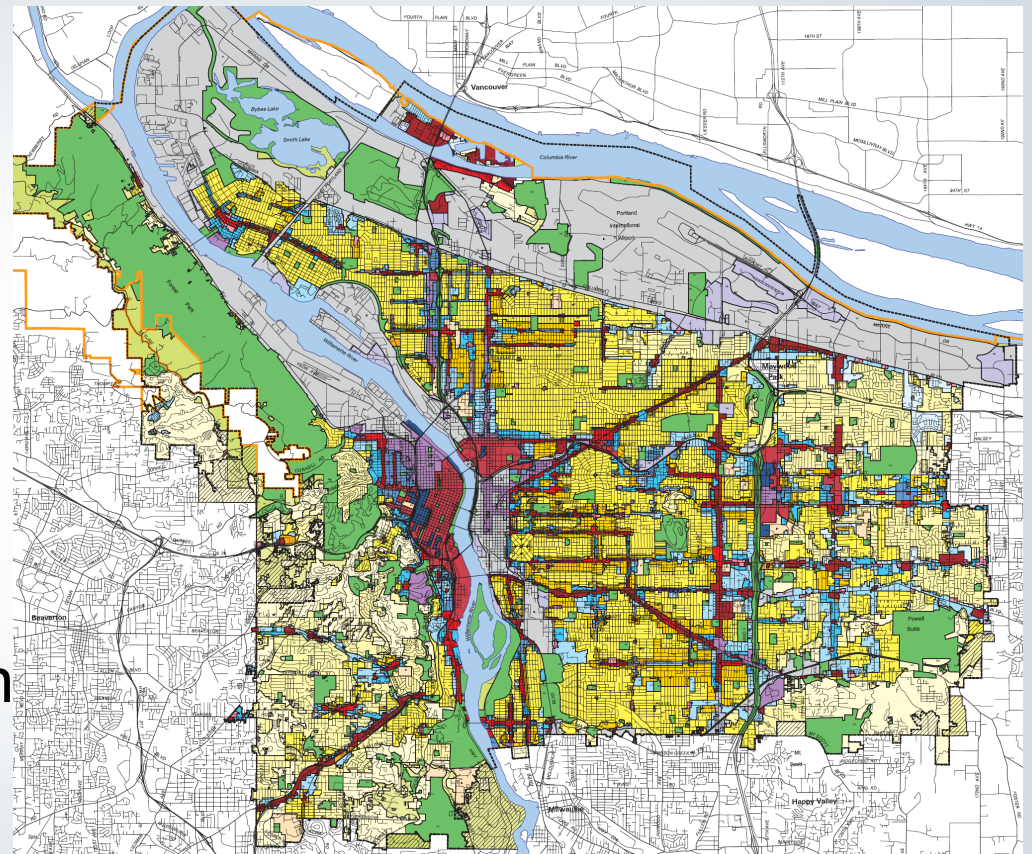
Bureau of Planning and Sustainability
Innovation. Collaboration. Practical Solutions.



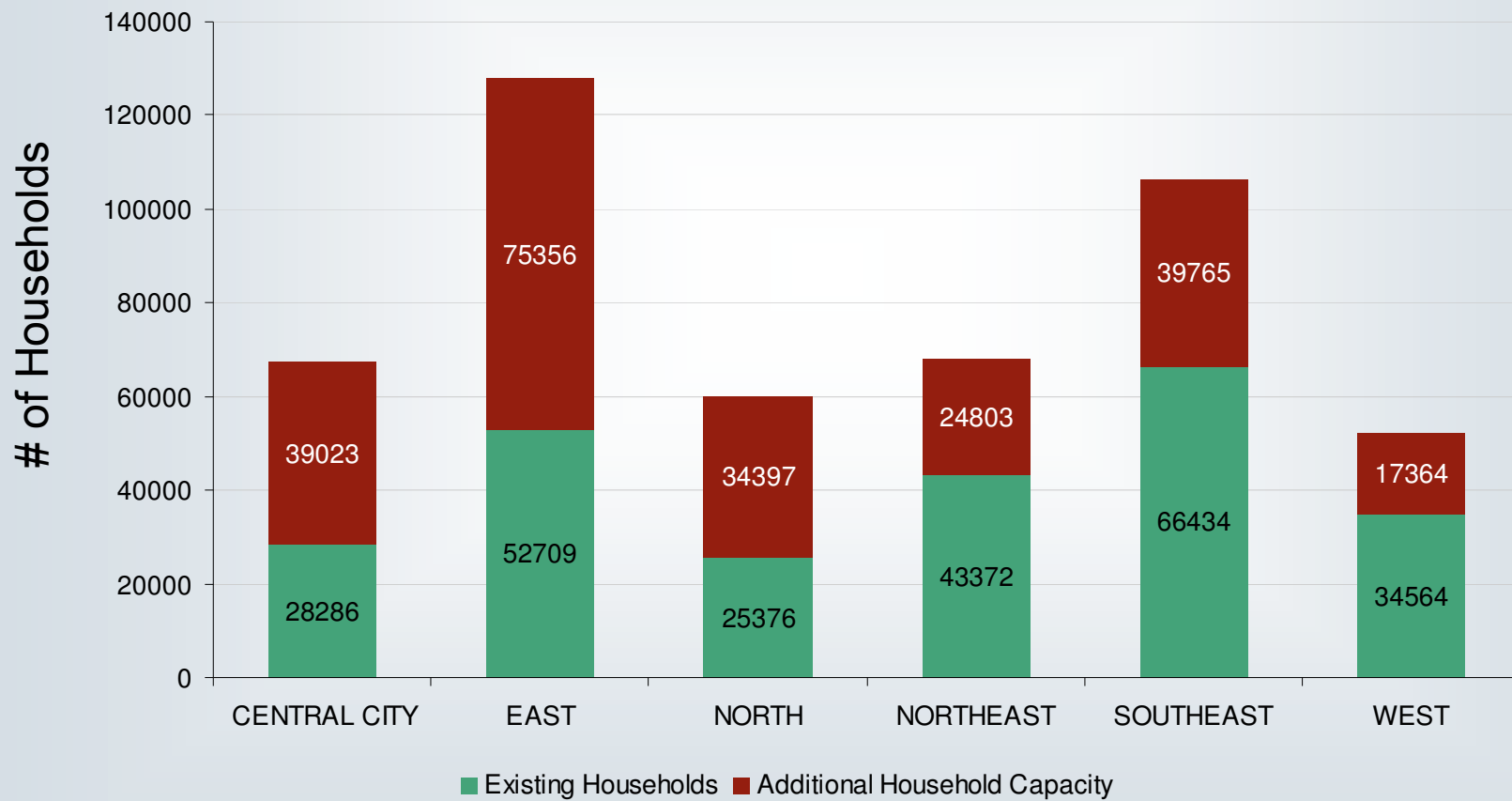
New Growth

Expected Growth by 2035:

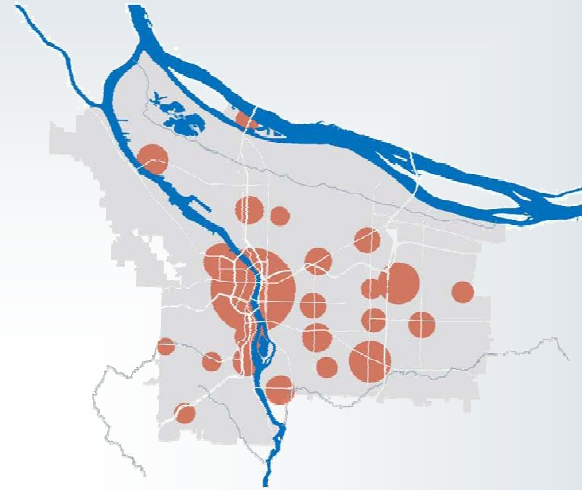
- 132,000 more households
- 147,000 projected new jobs
- Existing zoning has enough capacity to accommodate this growth



Existing Household Distribution + Capacity



Alternative Scenarios



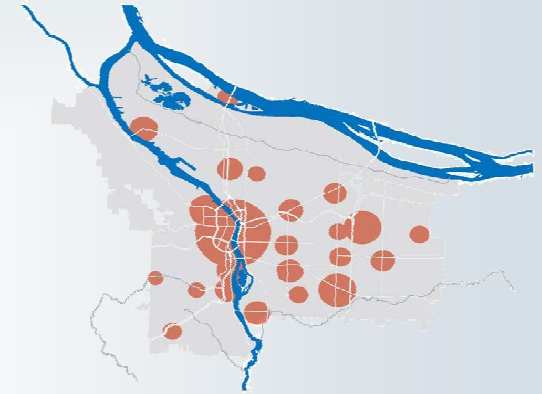
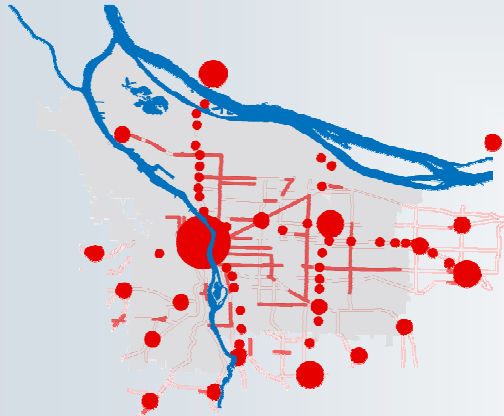
Growth Distribution by District

(new Households)

	Default	Scenarios
Central City	26,000	29,000 - 43,000
East	41,000	20,000 - 42,000
North	18,000	12,000 - 18,000
Northeast	14,000	12,000 - 20,000
Southeast	21,000	20,000 - 25,000
West	11,000	10,000 - 11,000



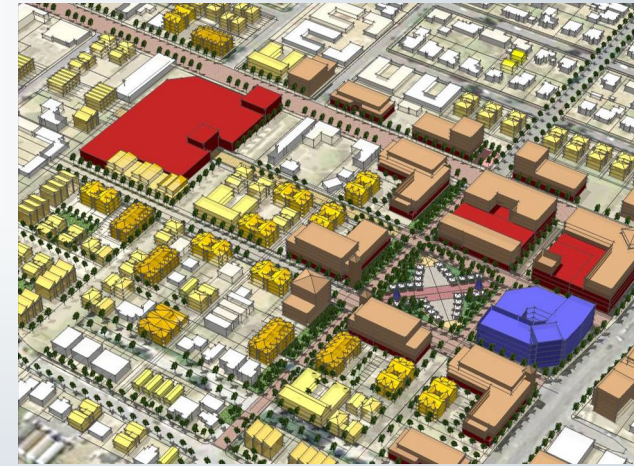
Comparing Growth Patterns



Default Growth Scenario



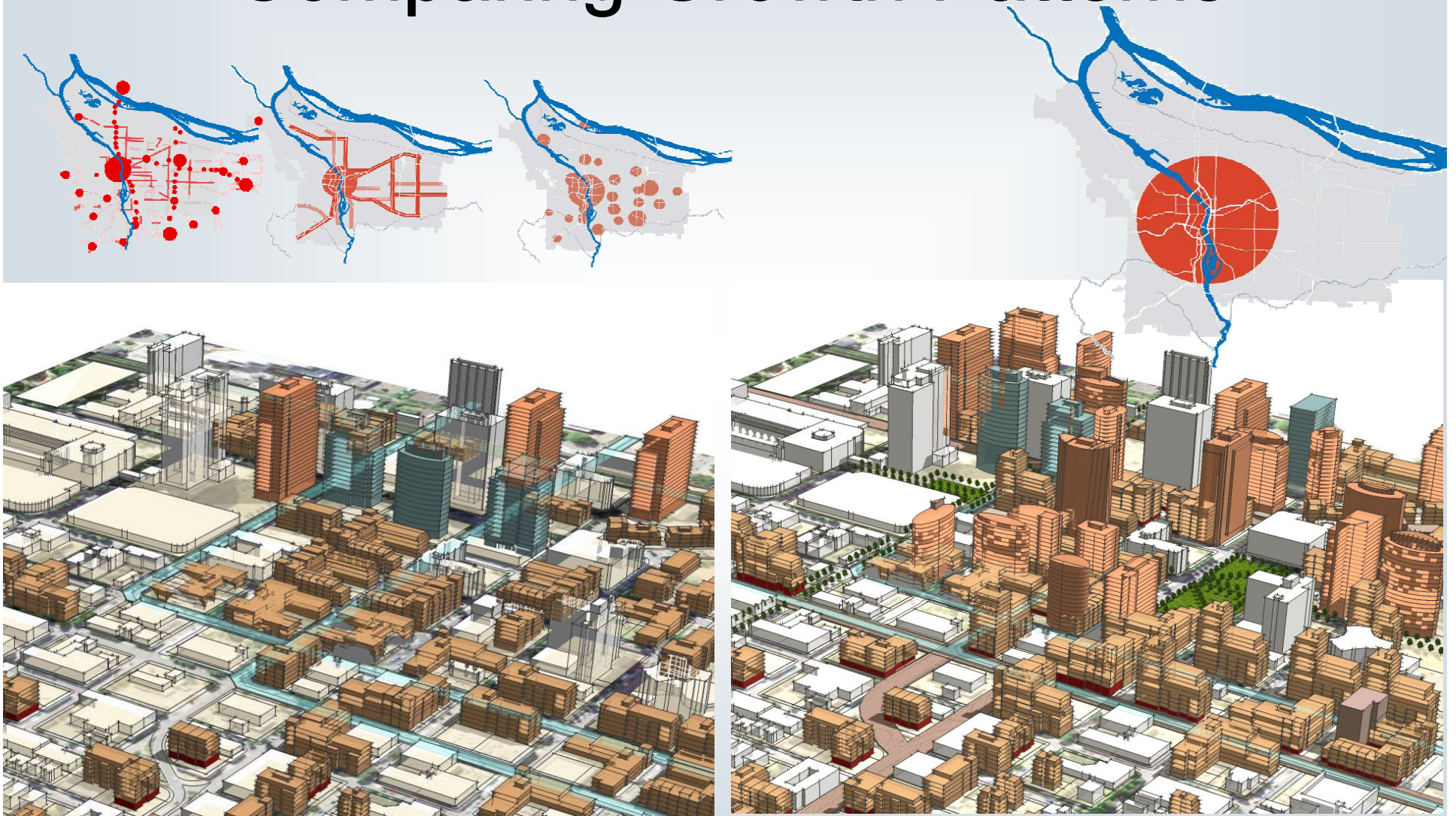
Corridor Growth Scenario



Hubs Growth Scenario



Comparing Growth Patterns



What makes a city healthy?



Basic Public Services



Parks & Nature



Healthy Food



Businesses & Amenities



Watershed Health



Social Connections



Active Transportation



Safety



Quality Housing



Performance Measures

Complete Neighborhoods	Tree Canopy
Access to Frequent Transit	Watershed Health
Access to Family Friendly Bike Network	Vehicle Miles Traveled
Housing Mix	Mode Split
Housing Affordability	Carbon/GHG Emissions
Risk of Displacement/Gentrification	Access to Family Wage Employment by 60 min Transit Trip
Parks & Natural Area Access	



Performance Measures

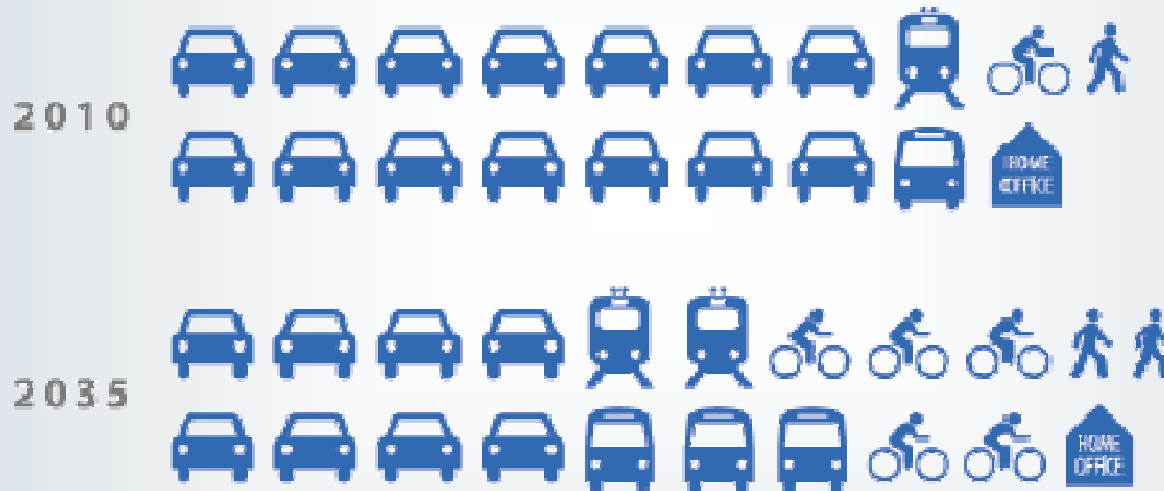
Access to Frequent Transit

Complete Neighborhoods



Transit Access: *Portland Plan Measure*

HOW DOES PORTLAND COMMUTE?

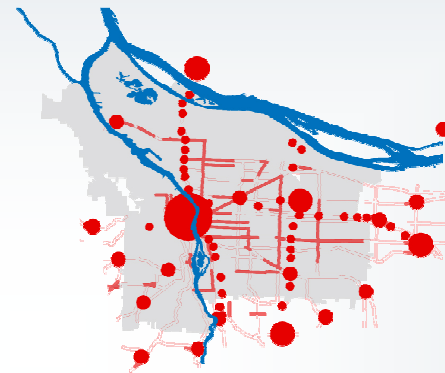
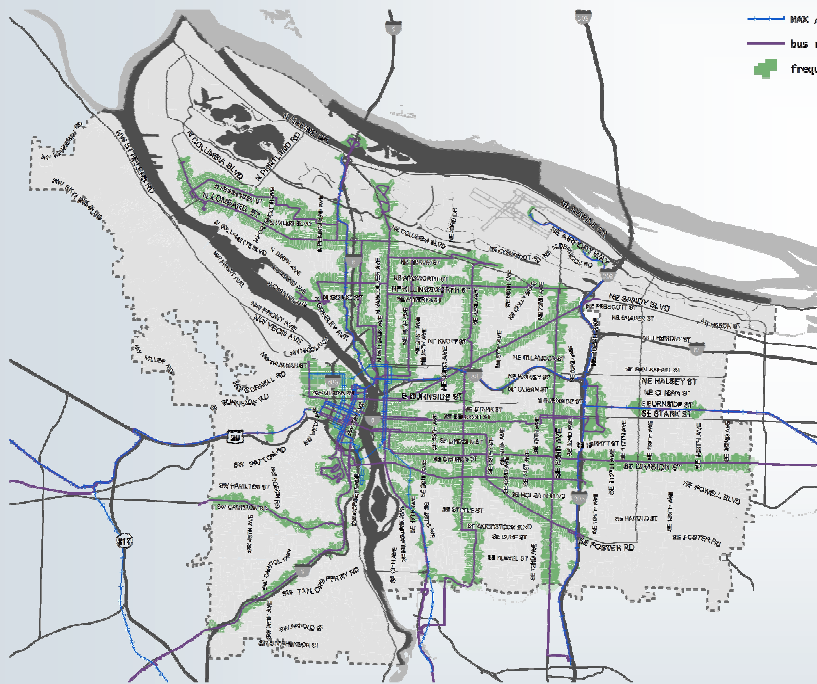


By 2035, 70 percent of Portlanders walk, bike, take transit, carpool or work from home.

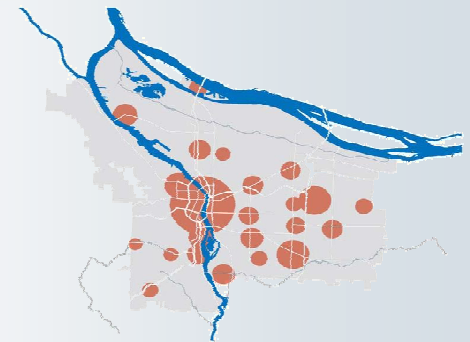


Frequent Transit Access

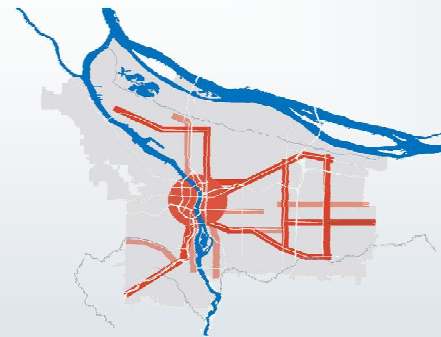
- Existing citywide measure: 47%



53%



53%



55%



56%



Complete Neighborhoods: *Portland Plan Measure*



By 2035, 80% of Portlanders can safely and easily walk, bike or roll to local services and amenities to meet their household needs.

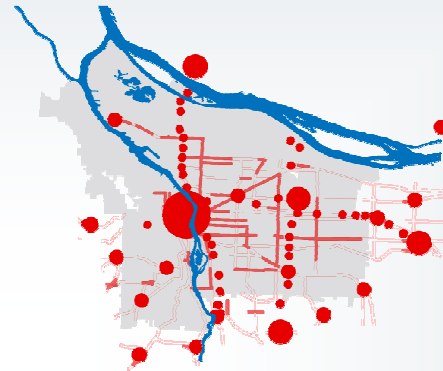
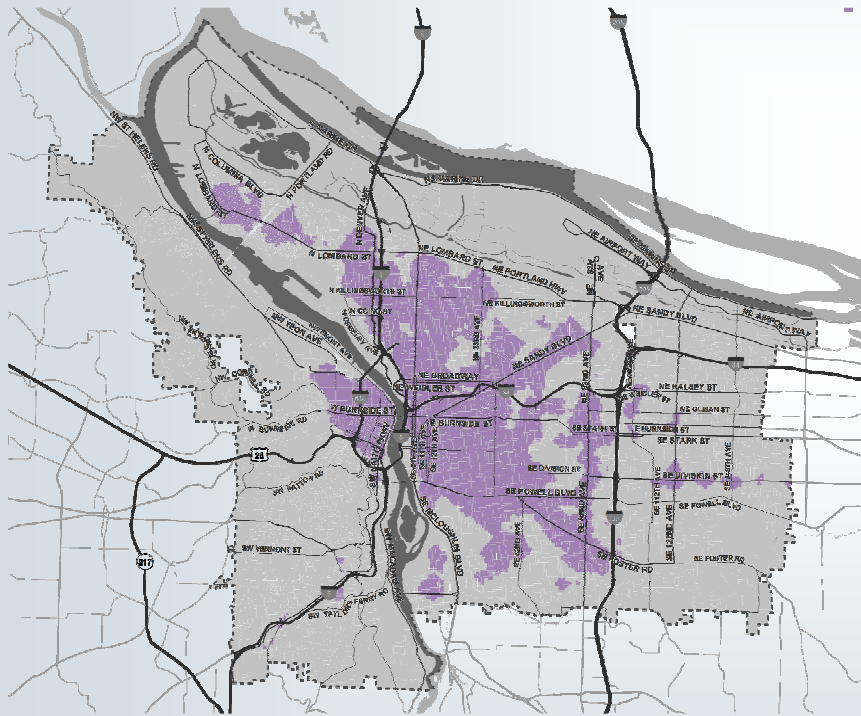


Bureau of Planning and Sustainability
Innovation. Collaboration. Practical Solutions.

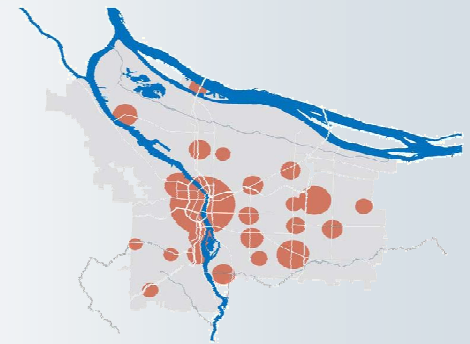


Complete Neighborhoods

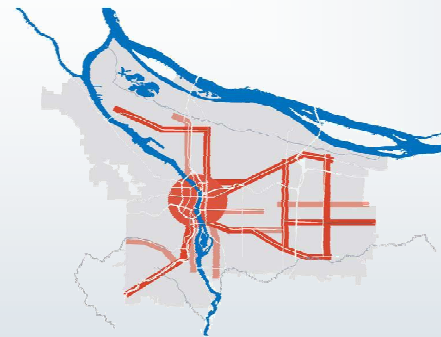
- Existing citywide measure: 45%



48%



48%



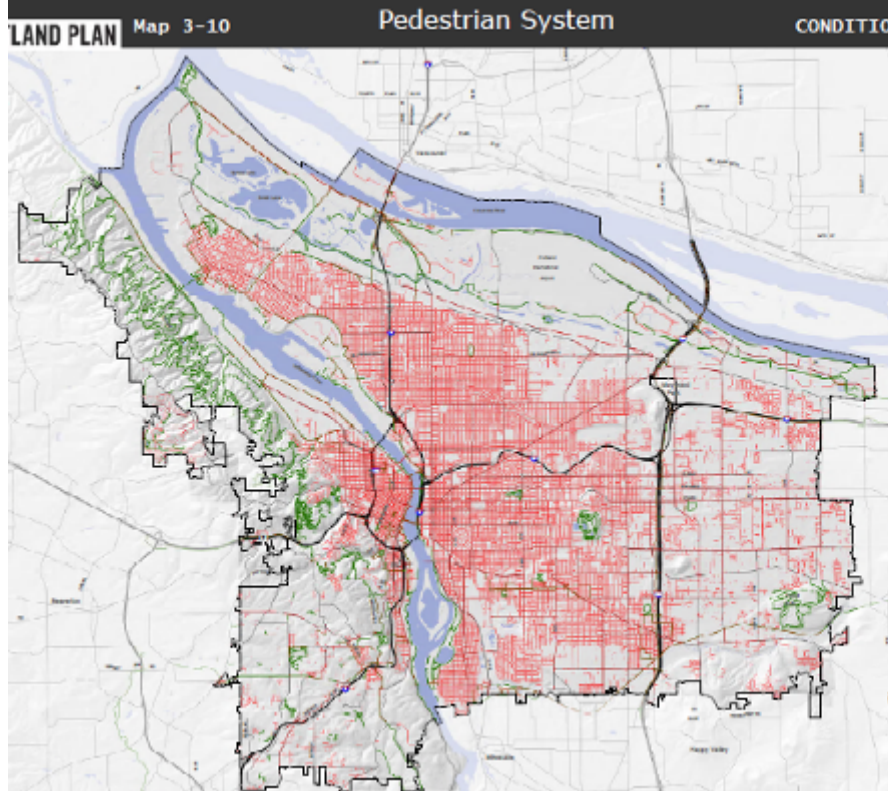
50%



53%



Transit & Active Transportation: *Policies*



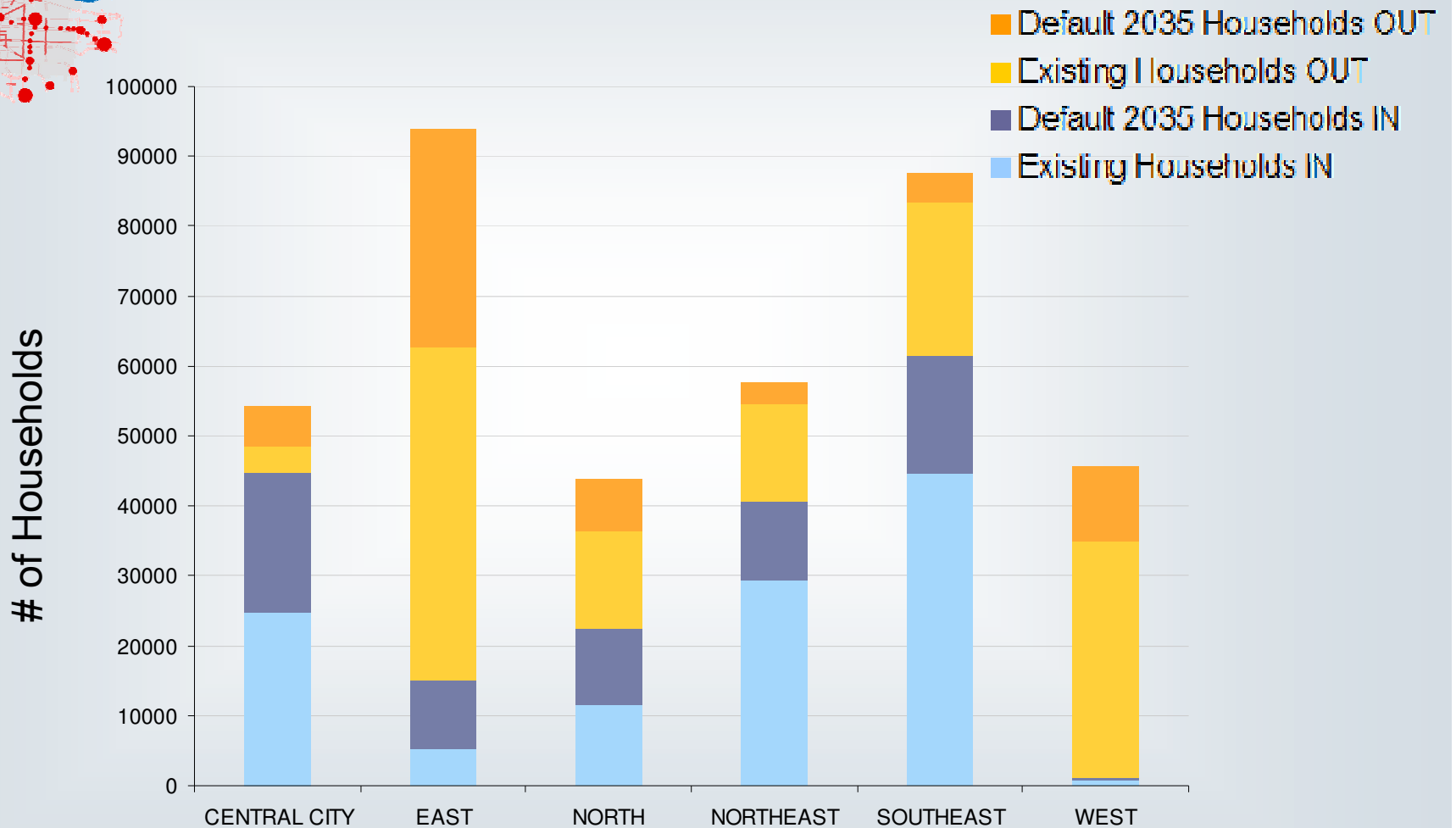
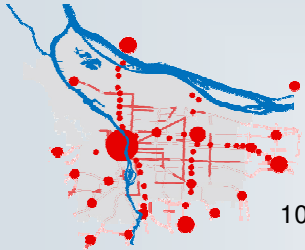
Prioritize centers as places linked by convenient transit service and that are easy to access and get around by walking, biking or wheelchair.



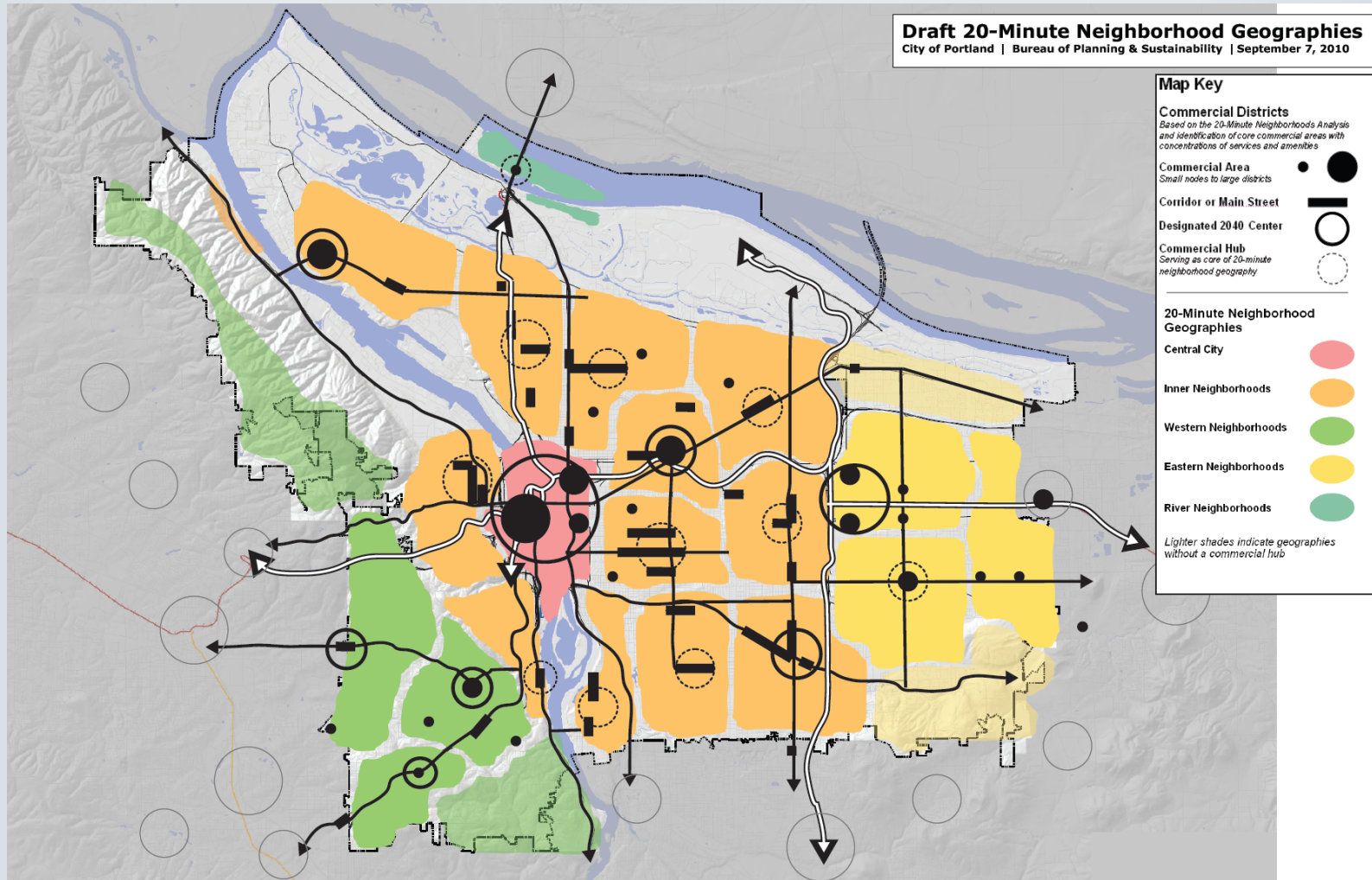
Bureau of Planning and Sustainability
Innovation. Collaboration. Practical Solutions.



Complete Neighborhood Comparison DEFAULT Scenario



Portland Plan Analysis Areas



Summary

- **Choices for Prioritizing Growth:** existing zoning has enough capacity to accommodate *147,000 new Jobs & 132,000 new Households*
- **Legacy Landscape:** 2/3 of households that will be here in 2035 are already on the ground
- **Dual Priorities:** assist in prioritizing growth in high performing areas and filling gaps in performance to meet Citywide goals

