



**VIEW OF CORNER  
 OF NE 32ND AND  
 NE WEIDLER**

PRELIMINARY NOT FOR CONSTRUCTION

CONSULTANT:



**RUNBERG  
 ARCHITECTURE  
 GROUP**

PROJECT NUMBER: 212000

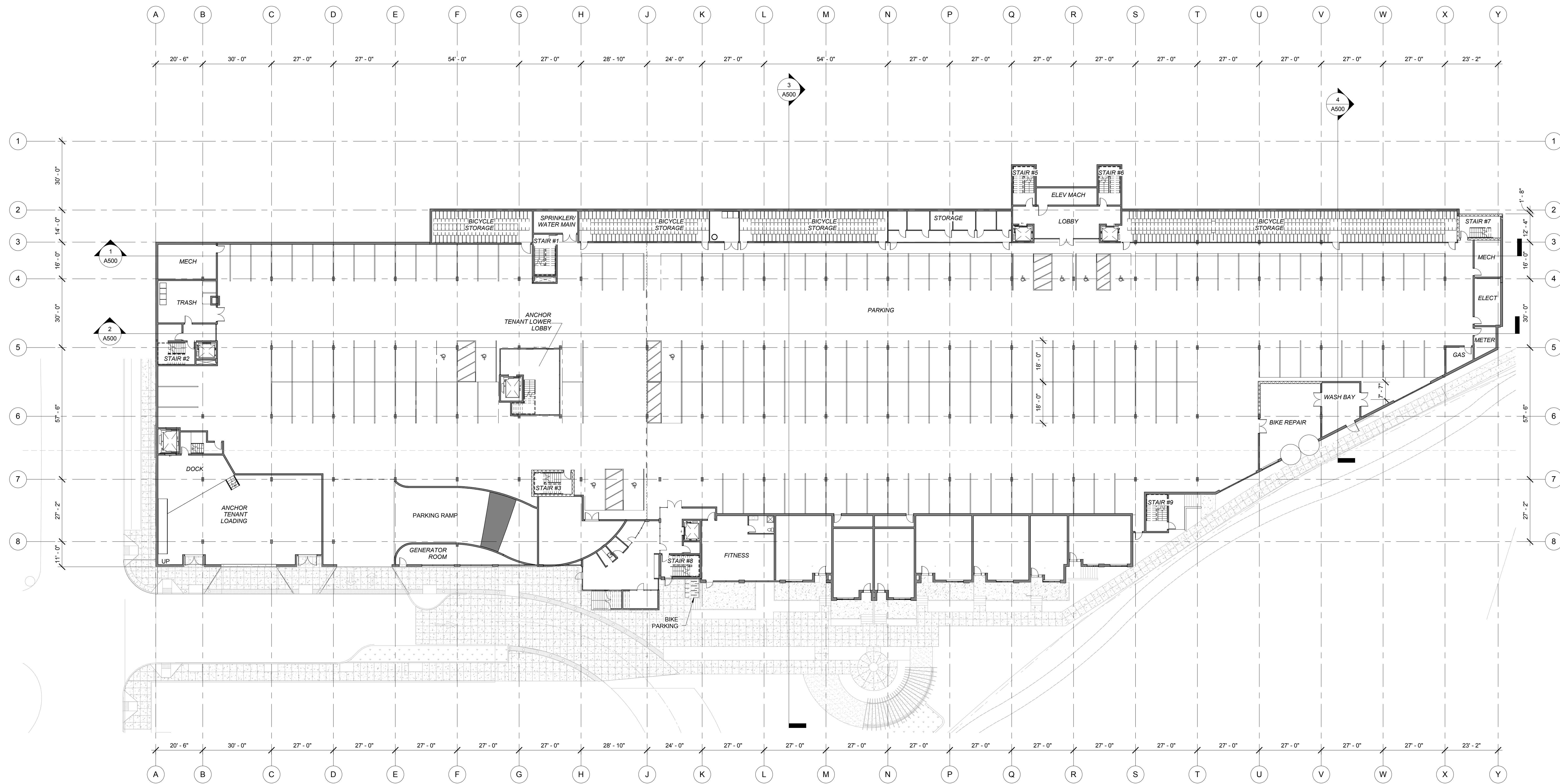
**GRANT PARK  
 VILLAGE**

**NE 33RD &  
 BROADWAY  
 PORTLAND, OR**

SHEET TITLE:

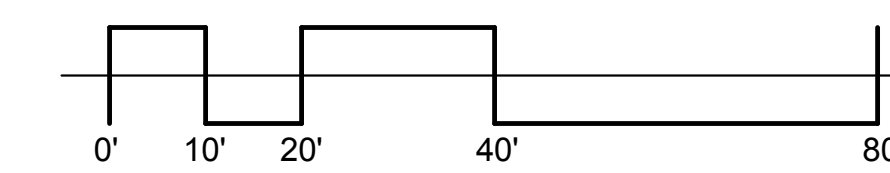
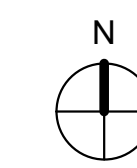
**RENDERING**

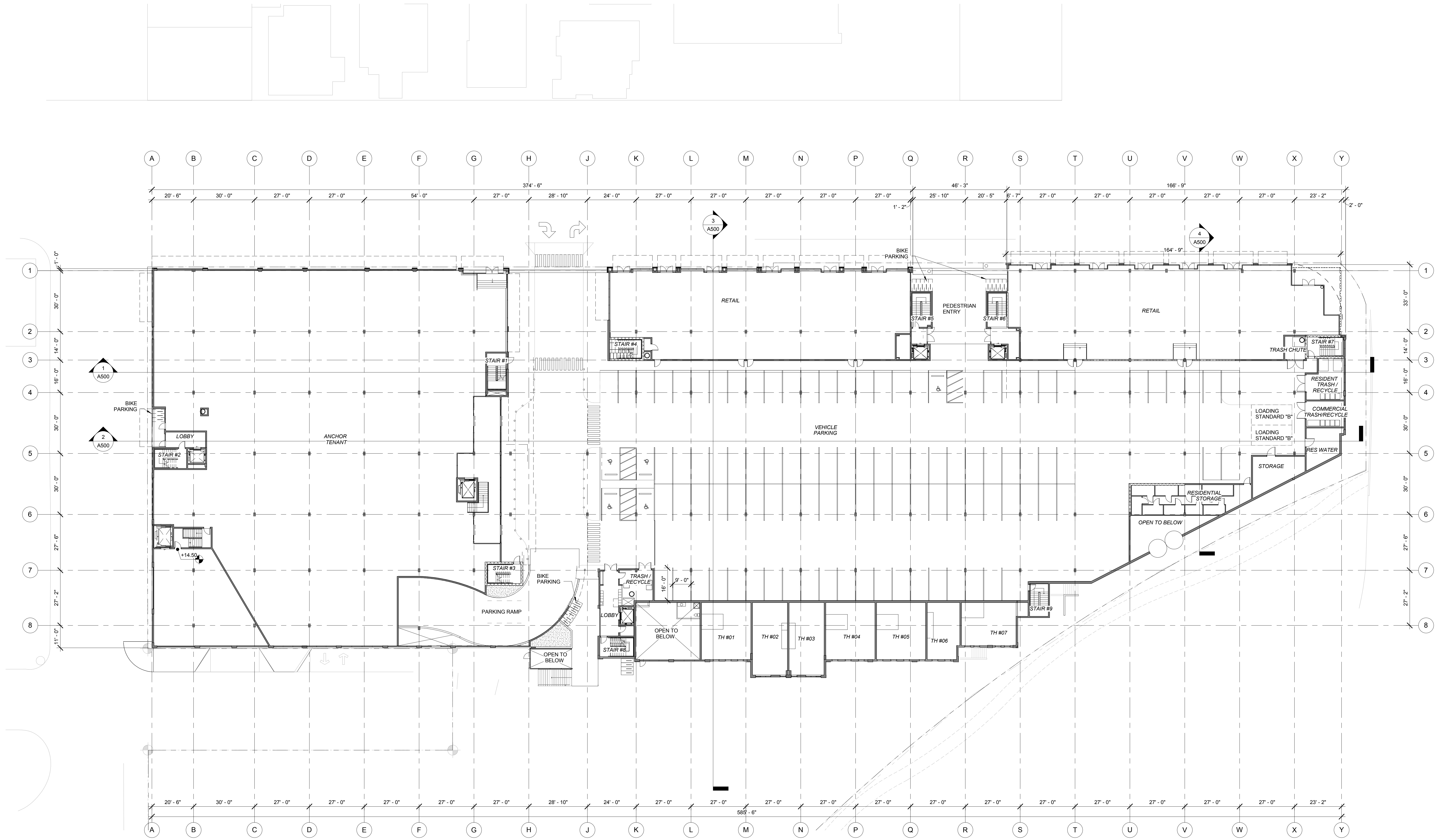
DRAWN BY: XXX  
 DATE ISSUED: 10.26.12



**1. LOWER LEVEL FLOOR PLAN**

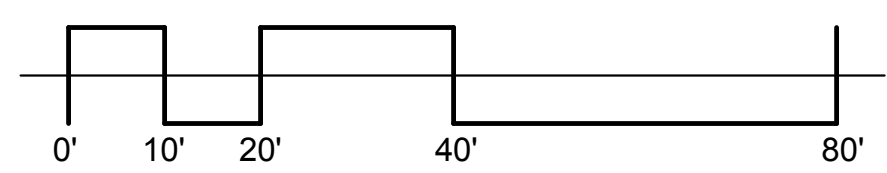
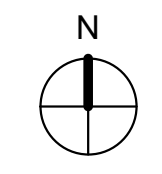
SCALE: 1" = 20'-0"

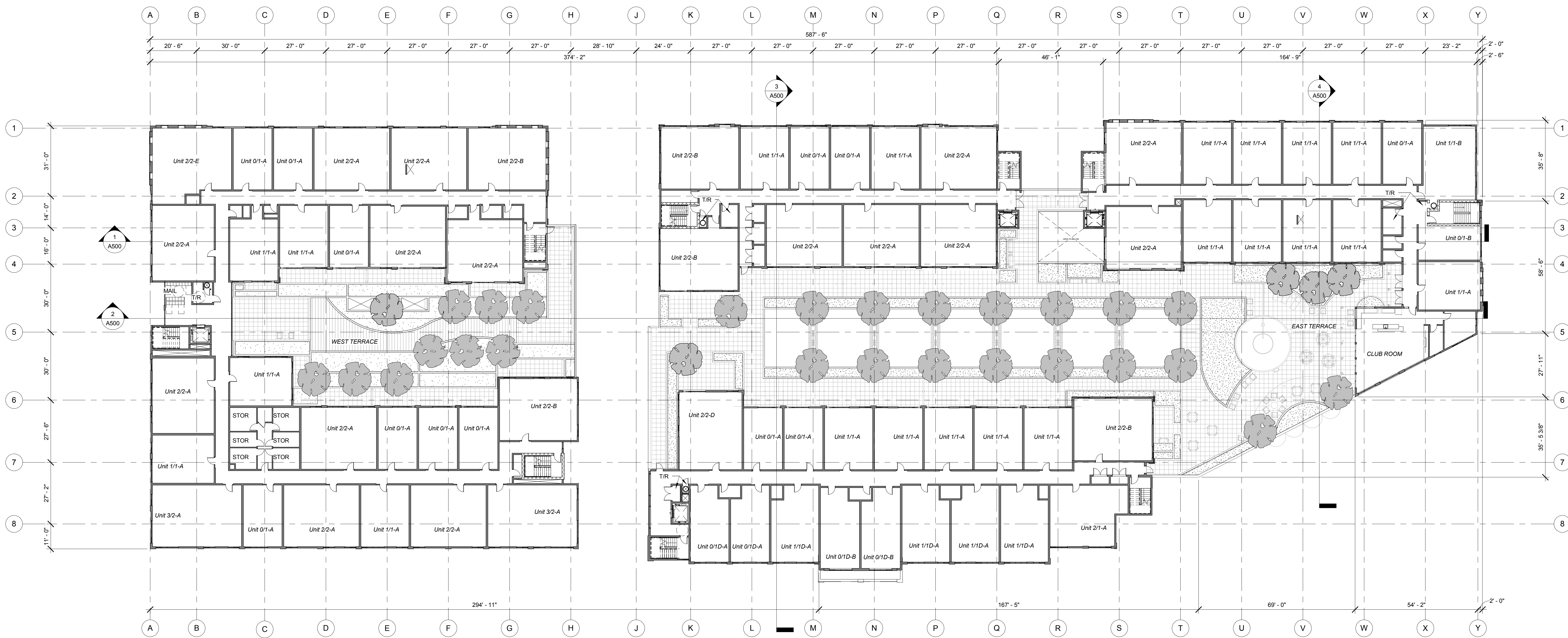




**1. LEVEL 1 OVERALL**

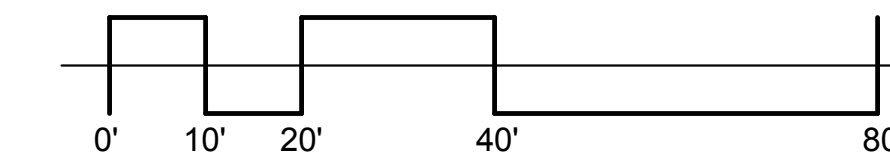
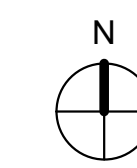
SCALE: 1" = 20'-0"

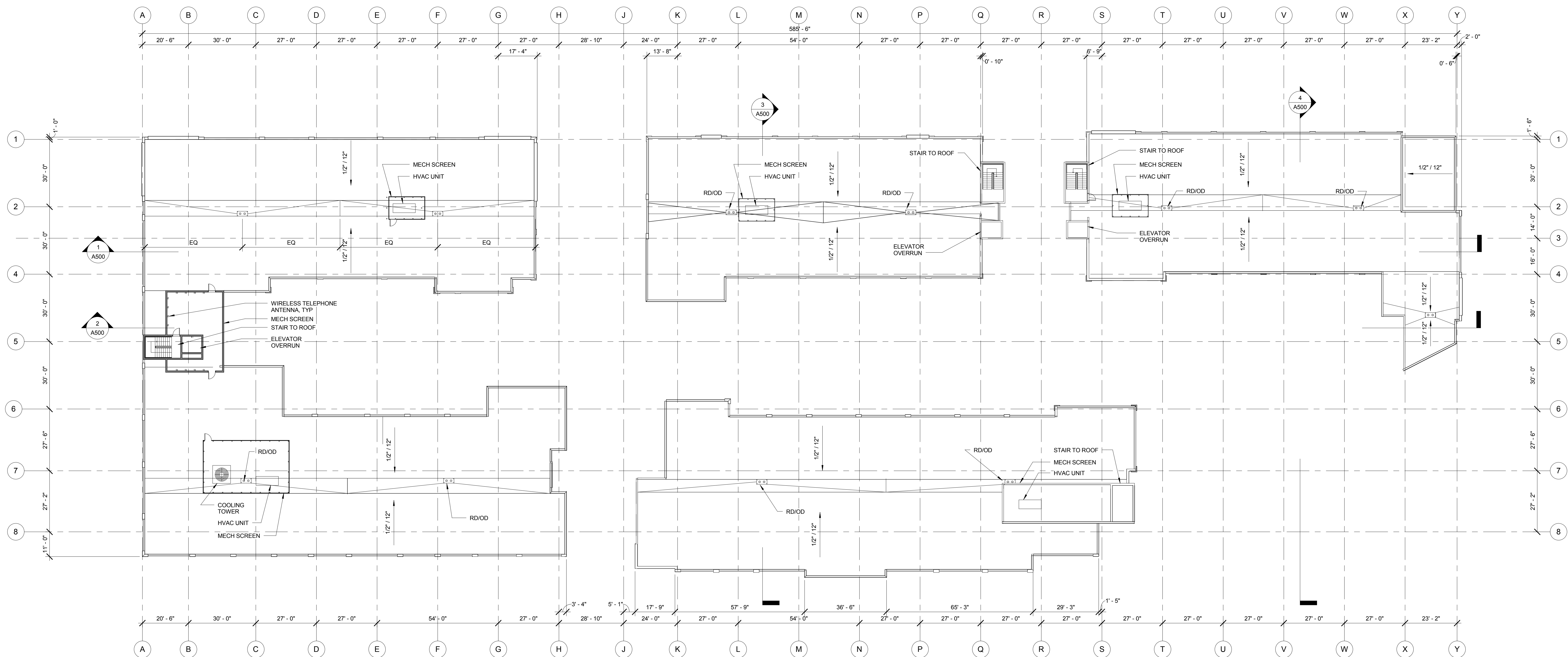




**1. TYPICAL HOUSING FLOOR - LEVEL 2 SHOWN**

SCALE: 1" = 20'-0"





**1. ROOF PLAN - OVERALL**

SCALE: 1" = 20'-0"

PRELIMINARY NOT FOR CONSTRUCTION

CONSULTANT:

**R:**  
**RUNBERG**  
**ARCHITECTURE**  
**GROUP**

PROJECT NUMBER: 212000

**GRANT PARK**  
**VILLAGE**

**NE 33RD &**  
**BROADWAY**  
**PORTLAND, OR**

SHEET TITLE:

**RENDERING**

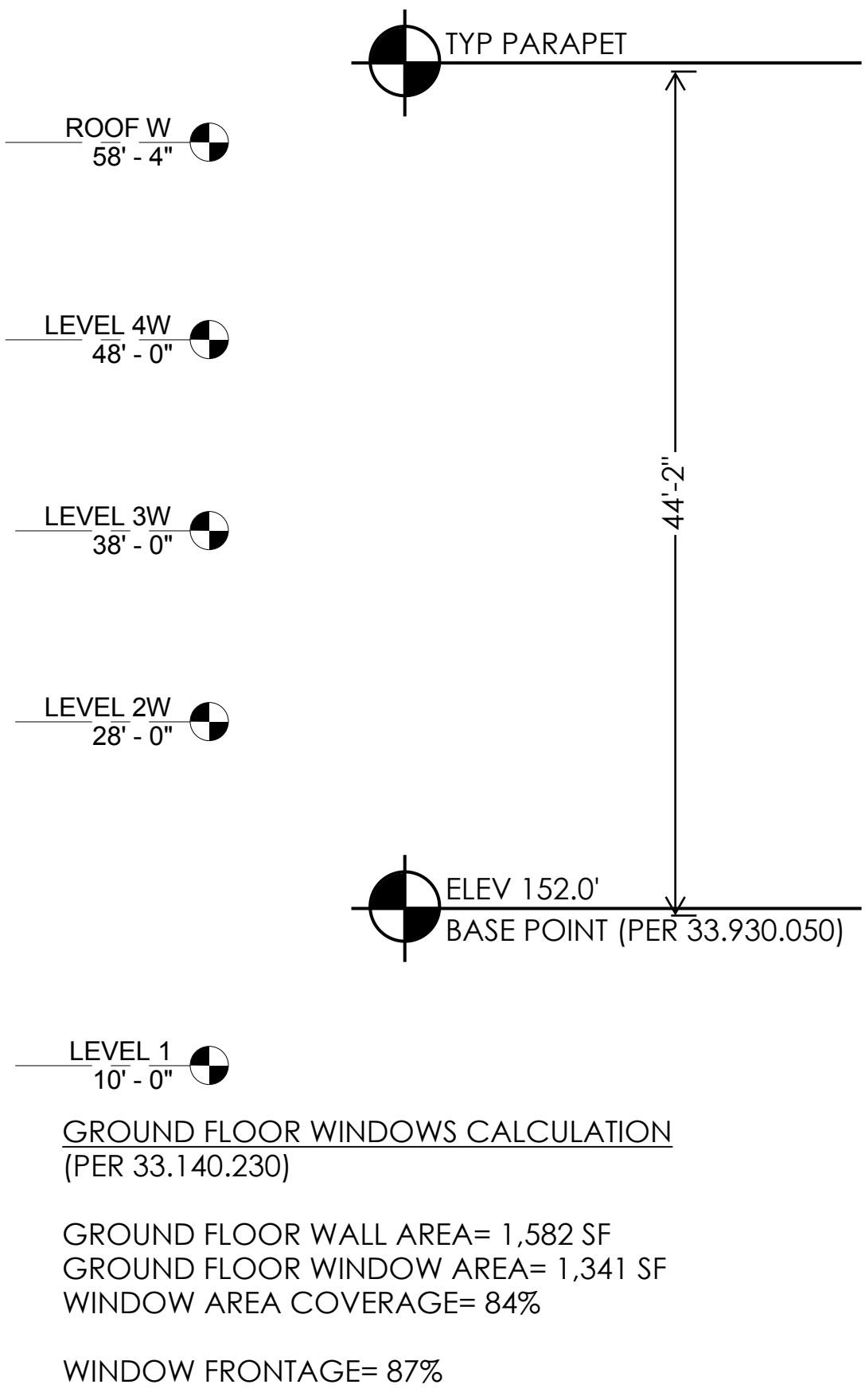
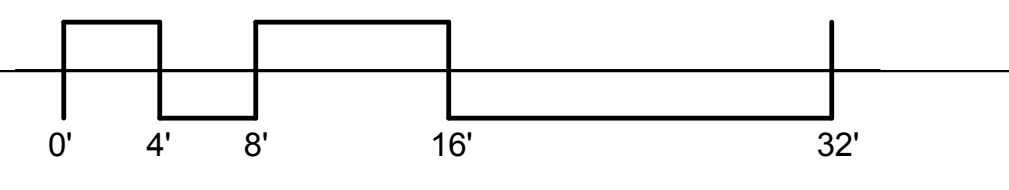


**VIEW FROM**  
**CORNER OF NE**  
**BROADWAY AND**  
**NE 32ND**

DRAWN BY: XXX  
 DATE ISSUED: 10.26.12



**1. BUILDING 1 - NORTH**  
 SCALE: 1/8" = 1'-0"



PRELIMINARY - NOT FOR CONSTRUCTION  
 CONSULTANT:

**R:**  
**RUNBERG**  
**ARCHITECTURE**  
**GROUP**

PROJECT NUMBER: 211346

**GRANT PARK**  
**VILLAGE**  
**NE 33RD &**  
**BROADWAY**  
**PORTLAND, OR**

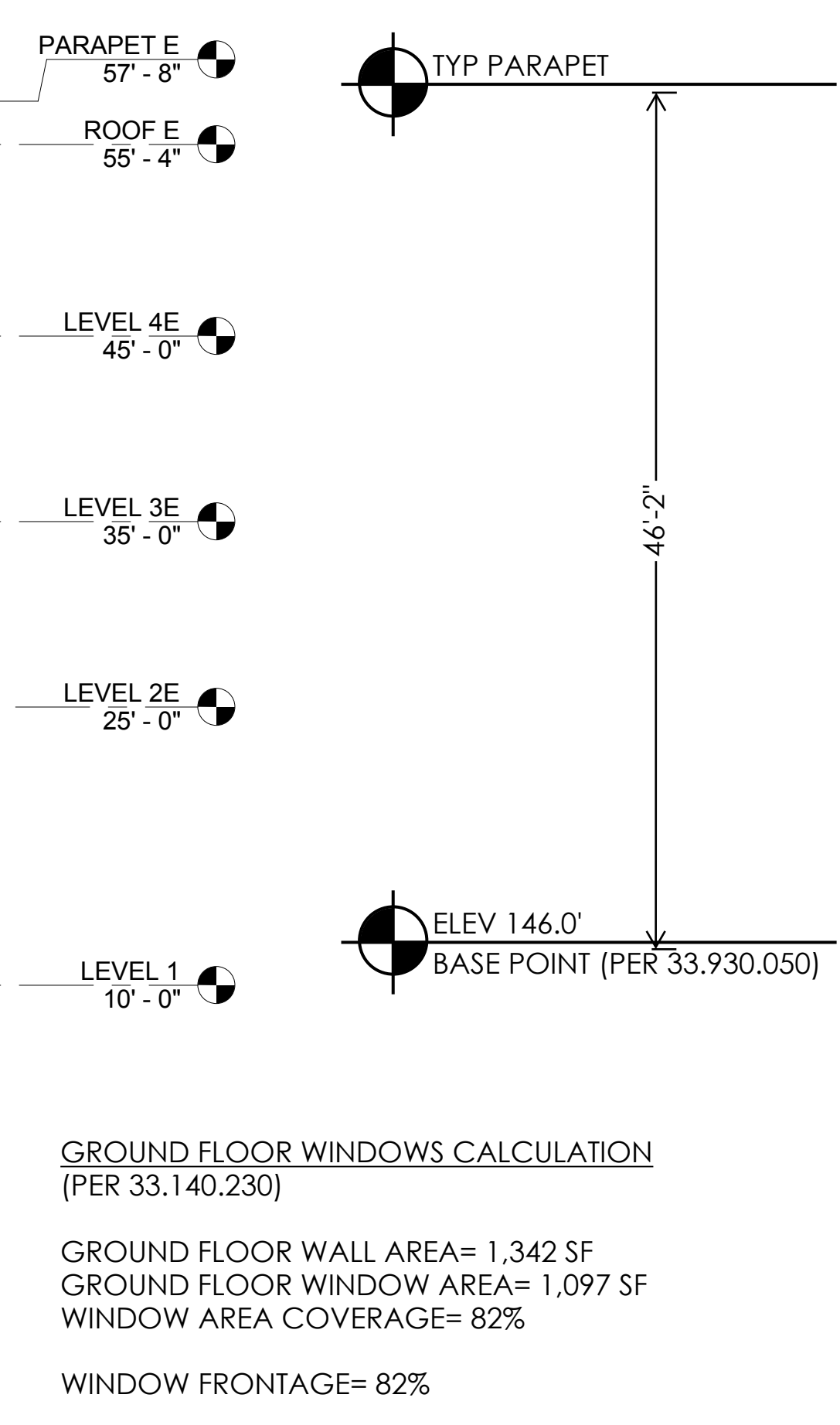
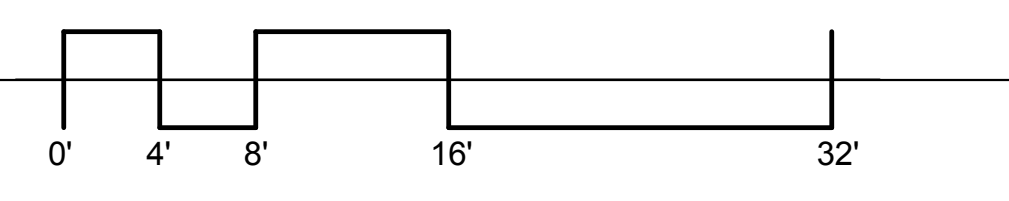
SHEET TITLE:  
**EXTERIOR**  
**ELEVATIONS**

DRAWN BY: Author  
 DATE ISSUED: 10.25.2012

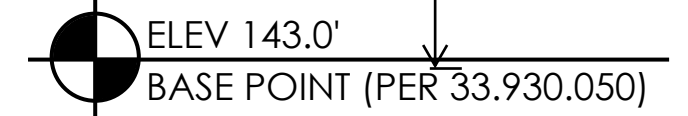
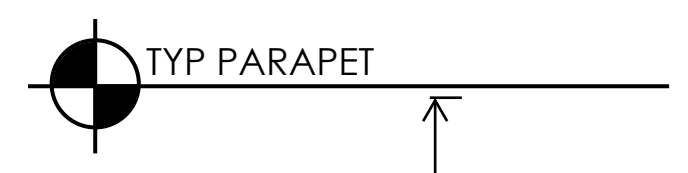
SHEET: **DR401**  
 LU.R. APPLICATION



**2. BUILDING 3 - NORTH**  
 SCALE: 1/8" = 1'-0"

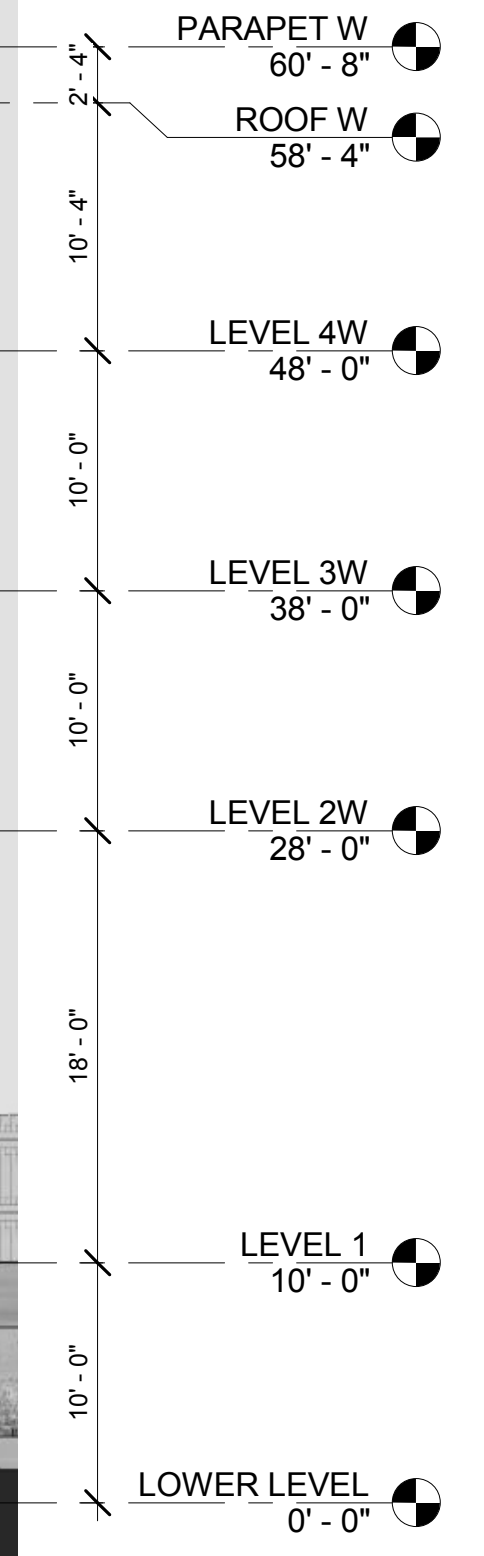
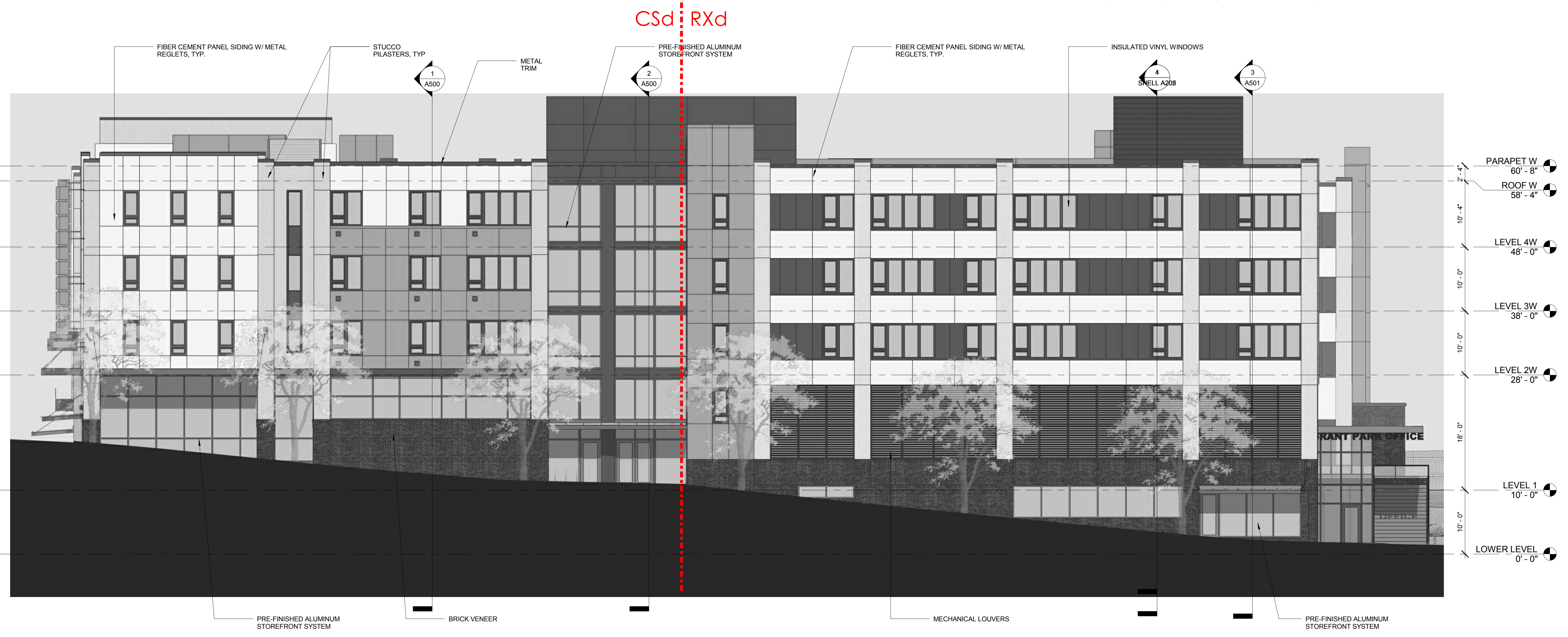
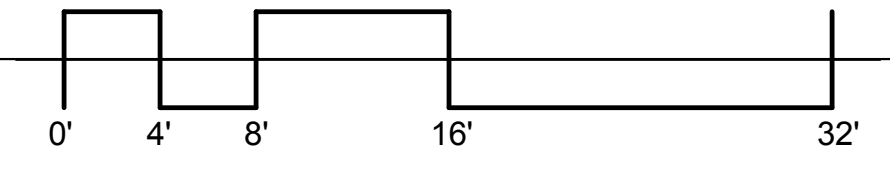


GROUND FLOOR WINDOWS CALCULATION  
 (PER 33.140.230)  
 GROUND FLOOR WALL AREA= 1,342 SF  
 GROUND FLOOR WINDOW AREA= 1,097 SF  
 WINDOW AREA COVERAGE= 82%  
 WINDOW FRONTAGE= 82%



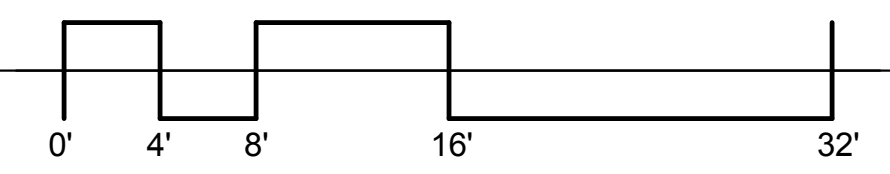
GROUND FLOOR WINDOWS CALCULATION  
 (PER 33.140.230)  
 GROUND FLOOR WALL AREA= 1,531 SF  
 GROUND FLOOR WINDOW AREA= 1,289 SF  
 WINDOW AREA COVERAGE= 84%  
 WINDOW FRONTAGE= 84%

**1. BUILDING 5 - NORTH ELEVATION**  
 SCALE: 1/8" = 1'-0"



GROUND FLOOR WINDOWS CALCULATION  
 (PER 33.140.230)  
 GROUND FLOOR WALL AREA= 1,751 SF  
 GROUND FLOOR WINDOW AREA= 675 SF  
 WINDOW AREA COVERAGE= 38%  
 WINDOW FRONTAGE= 48%

**3. BUILDING 1 & 2 WEST ELEVATION**  
 SCALE: 1/8" = 1'-0"



PRELIMINARY - NOT FOR CONSTRUCTION  
 CONSULTANT:



**RUNBERG**  
**ARCHITECTURE**  
**GROUP**

PROJECT NUMBER: 211346

**GRANT PARK**  
**VILLAGE**  
**NE 33RD &**  
**BROADWAY**  
**PORTLAND, OR**

SHEET TITLE:  
**EXTERIOR**  
**ELEVATIONS**

DRAWN BY: Author  
 DATE ISSUED: 10.25.2012

SHEET: **DR402**  
 LUR APPLICATION



PRELIMINARY - NOT FOR CONSTRUCTION  
 CONSULTANT:

**R:**  
**RUNBERG**  
**ARCHITECTURE**  
**GROUP**

PROJECT NUMBER: 211346

**GRANT PARK VILLAGE**  
**NE 33RD & BROADWAY**  
**PORTLAND, OR**

SHEET TITLE:  
**EXTERIOR ELEVATIONS**

DRAWN BY: Author  
 DATE ISSUED: 10.25.2012

SHEET: **DR403**  
 L.U.R. APPLICATION

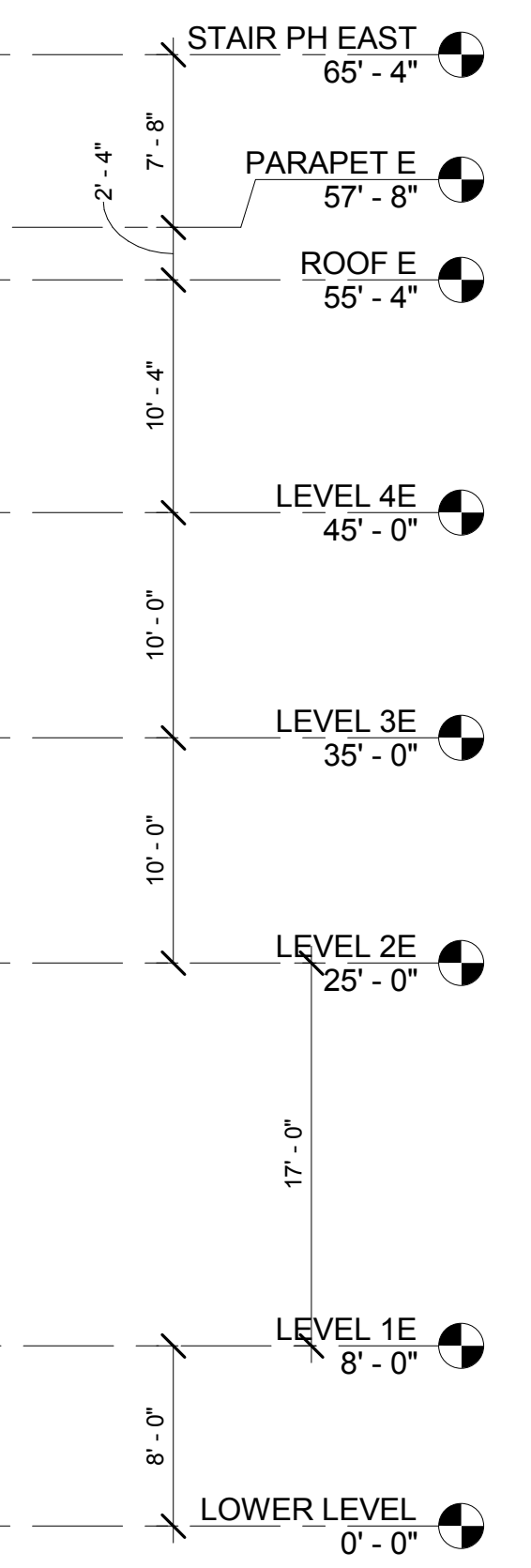


**1. ELEVATION BLDG 4 SOUTH**  
 SCALE: 1/8" = 1'-0"

CSD: RXd



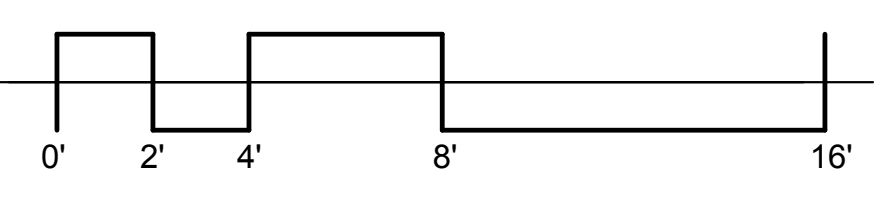
**2. BUILDING 5 EAST ELEVATION**  
 SCALE: 1/8" = 1'-0"



GROUND FLOOR WINDOWS CALCULATION  
 (PER 33.140.230)  
 GROUND FLOOR WALL AREA= 856 SF  
 GROUND FLOOR WINDOW AREA= 300 SF  
 WINDOW AREA COVERAGE= 35%  
 WINDOW FRONTAGE= 36%



**3. ENLARGED ELEVATION BLDG 4 SOUTH**  
 SCALE: 1/4" = 1'-0"





**1. BUILDING 2 SOUTH ELEVATION**  
 SCALE: 1/8" = 1'-0"

PRELIMINARY - NOT FOR CONSTRUCTION  
 CONSULTANT:



**RUNBERG**  
**ARCHITECTURE**  
**GROUP**

PROJECT NUMBER: 211346

**GRANT PARK**  
**VILLAGE**

**NE 33RD &**  
**BROADWAY**  
**PORTLAND, OR**

SHEET TITLE:

**EXTERIOR**  
**ELEVATIONS**

DRAWN BY: DMJ  
 DATE ISSUED: 10.25.2012

**DR404**  
 SHEET: LU.R. APPLICATION



**VIEW OF CORNER  
 OF NE 32ND AND  
 NE WEIDLER**

PRELIMINARY NOT FOR CONSTRUCTION

CONSULTANT:



**RUNBERG  
 ARCHITECTURE  
 GROUP**

PROJECT NUMBER: 212000

**GRANT PARK  
 VILLAGE**

**NE 33RD &  
 BROADWAY  
 PORTLAND, OR**

SHEET TITLE:

**RENDERING**

DRAWN BY: XXX  
 DATE ISSUED: 10.26.12

**A606**

LRS Architects, Inc. © 2012  
 L.U.R. APPLICATION