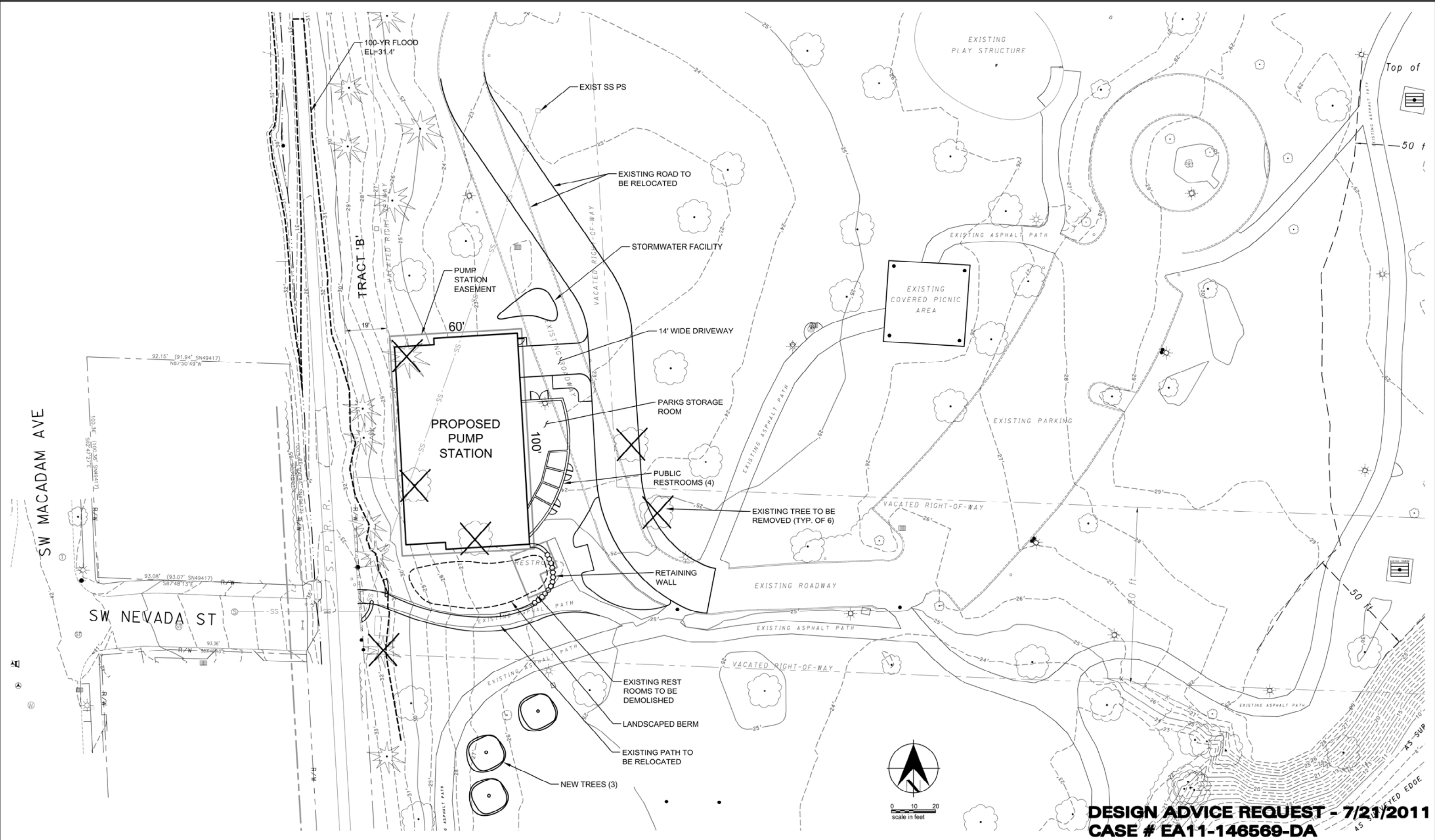


G:\PDX_Projects\101173\CAD\SHEETS\BDS DESIGN ADVICE SET\10-1173-500-OR-C2.dwg C.2 7/8/2011 4:59 PM DAK IB.is (LMS Tech)



DESIGN ADVICE REQUEST - 7/21/2011
CASE # EA11-146569-DA

| No | Date | Description | Appd |
|----------|------|-------------|------|
| | | | |
| | | | |
| Revision | | | |

MSA
 Murray, Smith & Associates, Inc.
 Engineers/Planners
 121 S.W. Salmon, Suite 900
 Portland, Oregon 97204
 PHONE 503-225-9010
 FAX 503-225-9022

| | |
|-------------|--------------|
| Designed By | Date |
| Drawn By | Program Mgr |
| Checked By | Const Mgr |
| Project Mgr | Design Supvr |

Submitted
 Reg Prof Engr No 13220
 Accepted
PRELIMINARY
 Reg Prof Engr No 78692



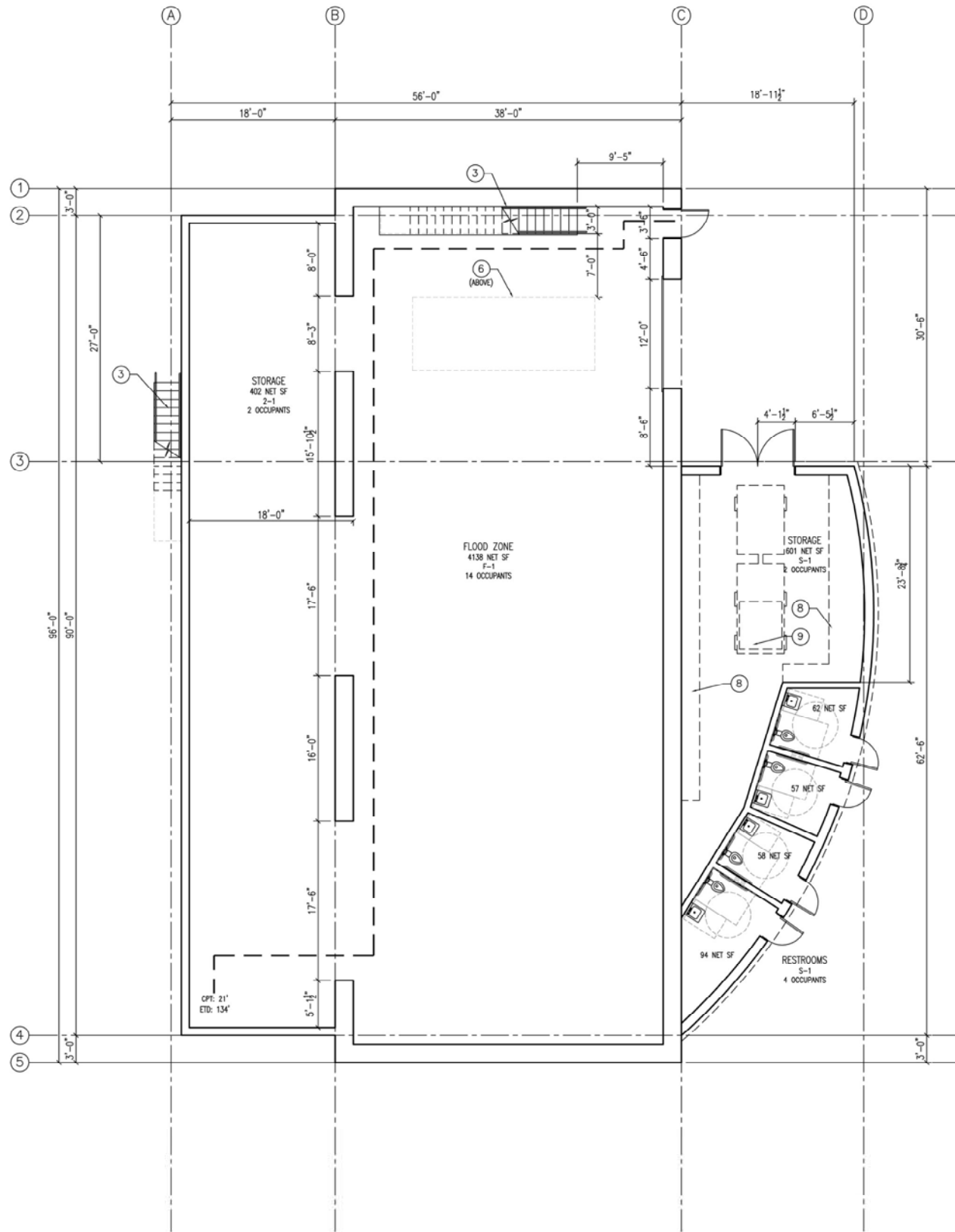
Randy Leonard
 Commissioner
 David G. Shaff
 Administrator



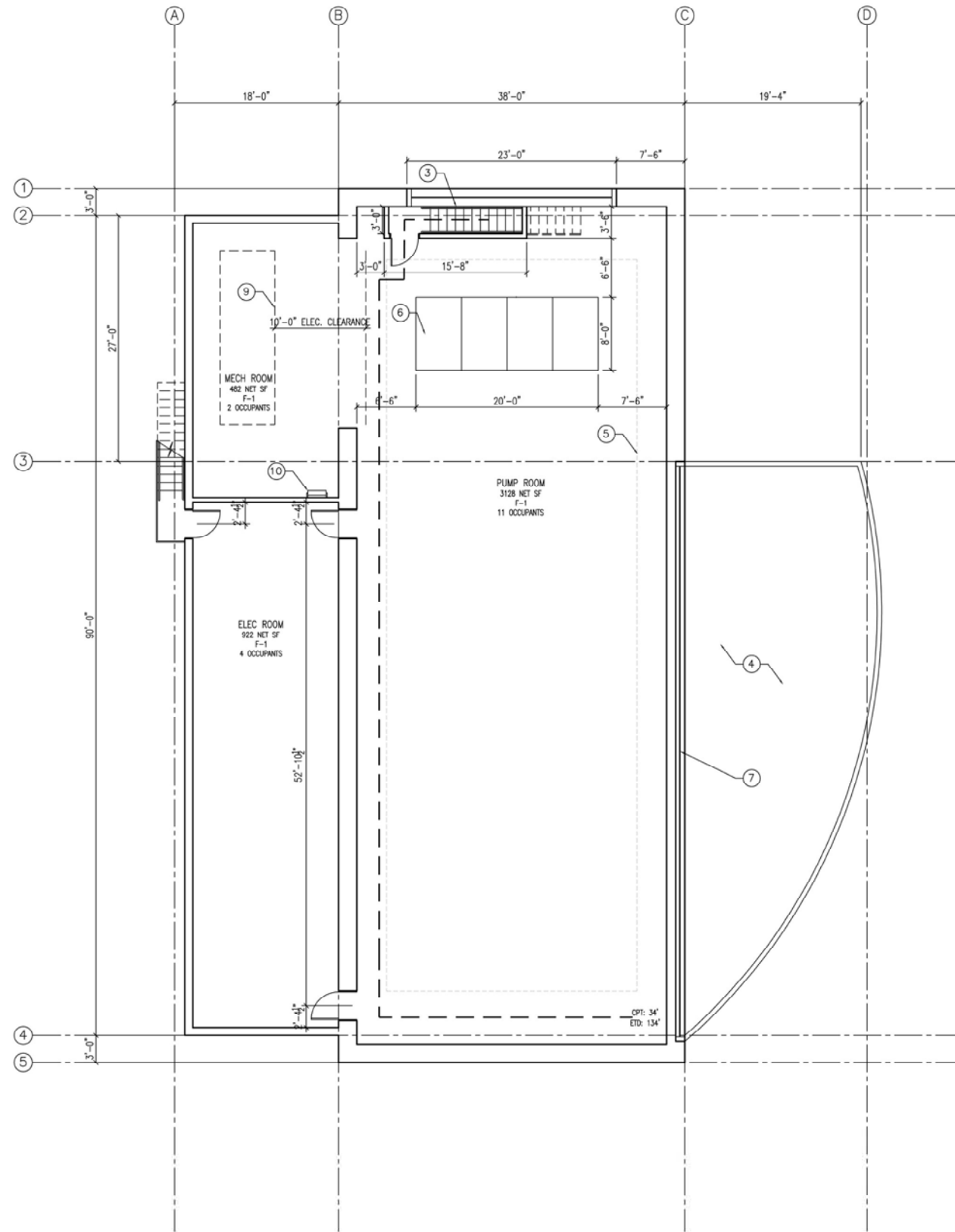
**FULTON PUMP STATION
 REPLACEMENT**
 SITE PLAN

Project No
W01358.DC
 1/4 Section
 1S1E22B
 EXHIBIT
 C.2
 2 of 10

G:\PDX_Projects\10\1173\CAD\SHEETS\BDS_DESIGN_ADVICE_SET\10-1173-500-OR-C.3.dwg C.3 7/8/2011 4:32 PM DAK IB.is (LMS Tech)



1 GROUND FLOOR PLAN
SCALE: 1/8"=1'-0"



2 MAIN FLOOR PLAN
SCALE: 1/8"=1'-0"

KEYNOTES:

- ① PUMP EQUIPMENT BY OTHERS
- ② PIPE BY OTHERS
- ③ STAIR
- ④ ROOF BELOW, SEE 1/A201
- ⑤ LIMITS OF BRIDGE CRANE ABOVE
- ⑥ LOADING HATCH IN FLOOR
- ⑦ SPANDREL GLASS
- ⑧ SHELVING BY OTHERS
- ⑨ EQUIPMENT BY OTHERS
- ⑩ ROOF ACCESS LADDER

LEGEND

- CPT COMMON PATH OF TRAVEL
- ETD EXIT TRAVEL DISTANCE
- EXIT ROUTE

CODE SUMMARY

GROSS BUILDING AREA: 6264 SF
 CONSTRUCTION TYPE: 1A
 OCCUPANCY CALCS:
 GROUND FLOOR:
 F-1 OCCUPANCY - 16 OCCUPANTS
 S-2 OCCUPANCY - 6 OCCUPANTS
 MAIN FLOOR:
 F-1 OCCUPANCY - 16 OCCUPANTS
 SPRINKLED?
 IF YES, THEN
 CPT = 100' MAX
 ETD = 250' MAX
 IF NO, THEN
 CPT = 25' MAX
 ETD = 200' MAX
 FIRE SEPARATION?
 NONE REQUIRED

MWA
Architects



DESIGN ADVICE REQUEST - 7/21/2011
CASE # EA11-146569-DA

| No | Date | Description | Appd |
|----|------|-------------|------|
| | | | |
| | | | |
| | | | |

MSA Murray, Smith & Associates, Inc.
 Engineers/Planners
 121 S.W. Salmon, Suite 900
 Portland, Oregon 97204
 PHONE 503-225-9010
 FAX 503-225-9022

| | |
|-------------|--------------|
| Designed By | Date |
| Drawn By | Program Mgr |
| Checked By | Const Mgr |
| Project Mgr | Design Supvr |

Submitted
 Reg Prof Engr No 13220
 Accepted
PRELIMINARY
 Chief Engr Reg Prof Engr No 78692 Date



Randy Leonard
Commissioner
 David G. Shaff
Administrator

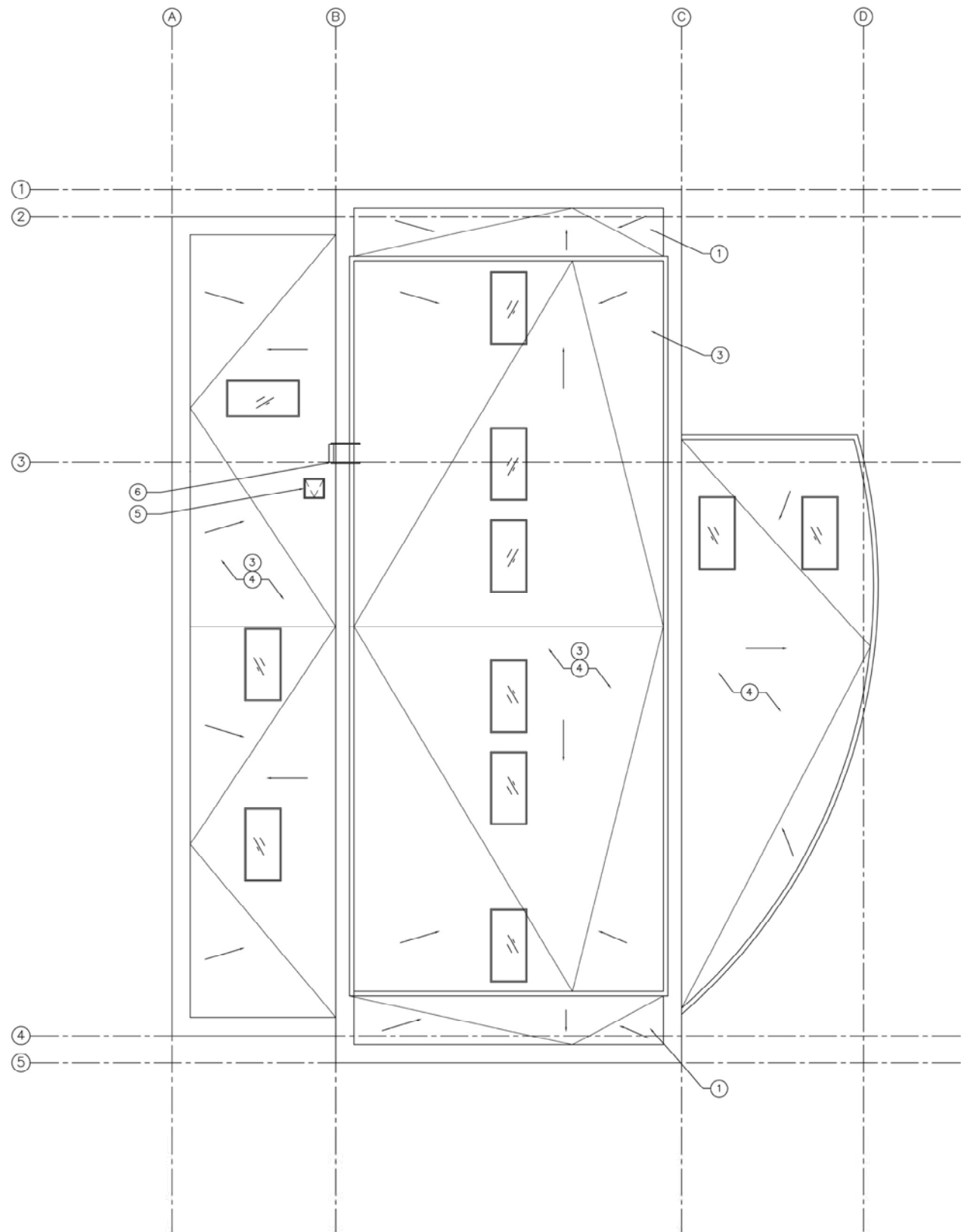


FULTON PUMP STATION
 REPLACEMENT
 PUMP STATION FLOOR PLANS

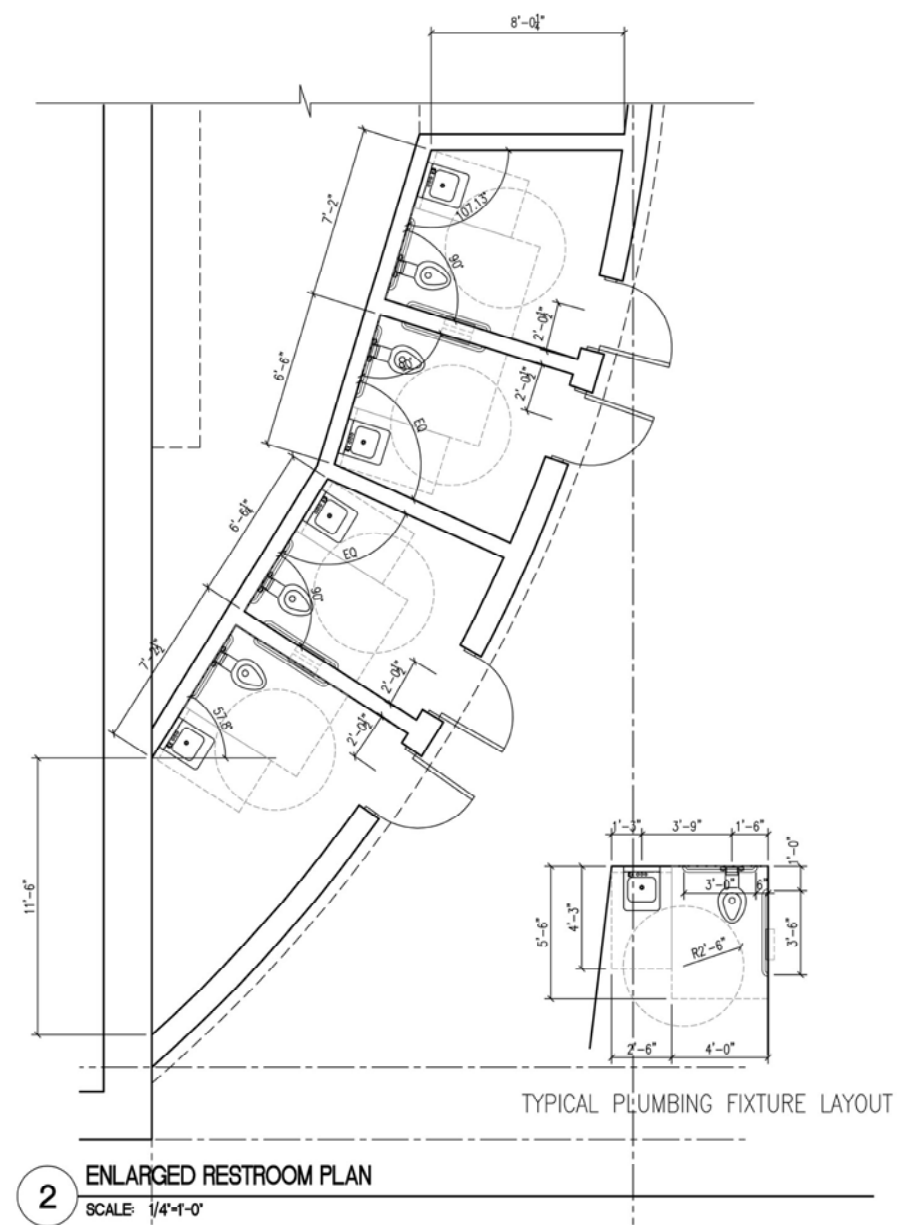
| | |
|-------------|-----------|
| Project No | W01358.DC |
| 1/4 Section | 1S1E22B |
| EXHIBIT | C.3 |
| | 3 of 10 |

KEYNOTES:

- ① LOWER ROOF BELOW
- ② 4X8 SKYLIGHT
- ③ MEMBRANE ROOF
- ④ ECOROOF
- ⑤ ROOF HATCH
- ⑥ LADDER



1 ROOF PLAN
SCALE: 1/8"=1'-0"



2 ENLARGED RESTROOM PLAN
SCALE: 1/4"=1'-0"



**DESIGN ADVICE REQUEST - 7/21/2011
CASE # EA11-146569-DA**

| No | Date | Description | Appd |
|----|------|-------------|------|
| | | | |
| | | | |
| | | | |
| | | | |
| | | | |

MSA Murray, Smith & Associates, Inc.
Engineers/Planners
121 S.W. Salmon, Suite 900
Portland, Oregon 97204
PHONE 503-225-9010
FAX 503-225-9022

| | |
|-------------|-------------|
| Designed By | Date |
| Drawn By | Program Mgr |
| Checked By | Const Mgr |
| Project Mgr | Design Supr |

Submitted

Accepted

PRELIMINARY

Chief Engr. Reg Prof Engr No 78692 Date



Randy Leonard
Commissioner

David G. Shaff
Administrator



FULTON PUMP STATION
REPLACEMENT

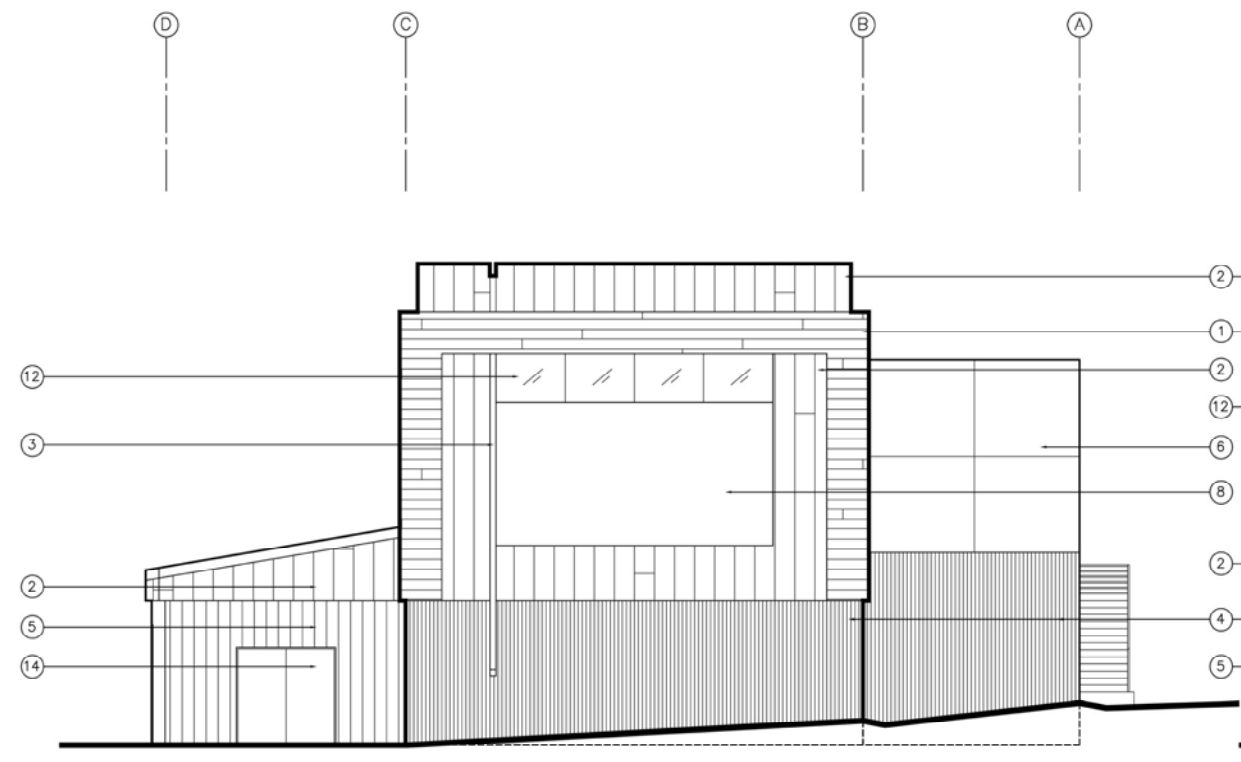
PUMP STATION ROOF PLAN

| | |
|-------------|-----------|
| Project No | W01358.DC |
| 1/4 Section | 1S1E22B |
| EXHIBIT | C.4 |
| | 4 of 10 |

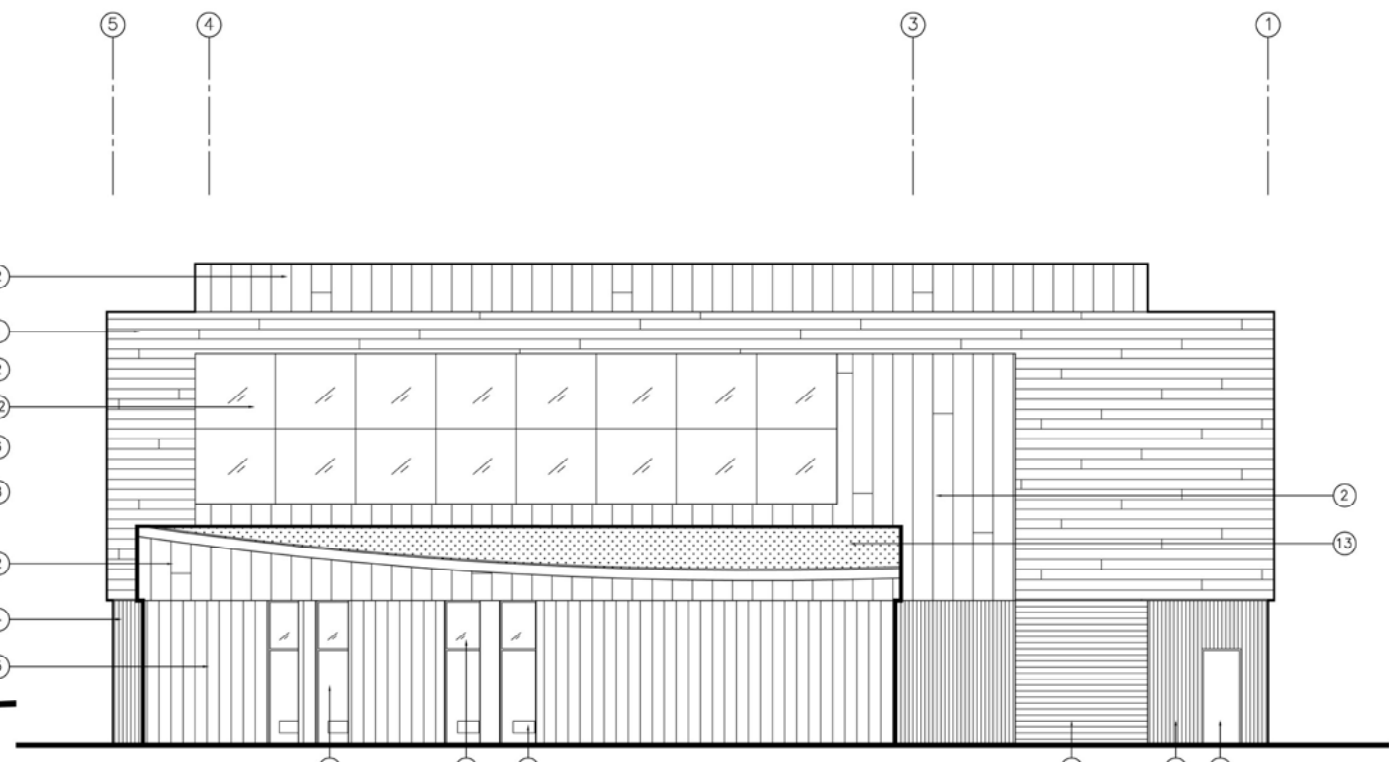
G:\PDX_Projects\10\1173\CAD\SHEETS\BDS_DESIGN_ADVICE_SET\10-1173-500-OR-C3.dwg C.4 7/8/2011 4:32 PM DAK IB.is (LMS Tech)

KEYNOTES:

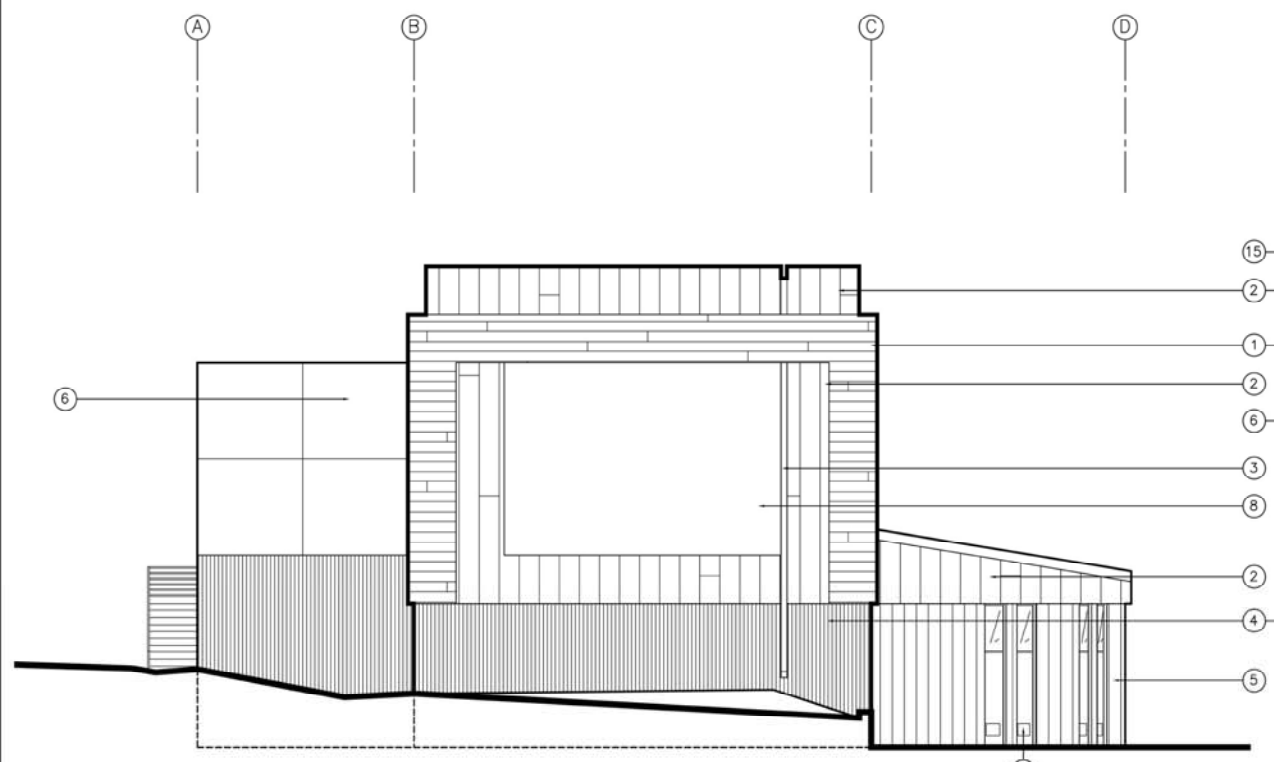
- ① CLADDING 1 - SYNTHETIC, HORIZONTAL ORIENTATION
- ② CLADDING 2 - VERTICAL METAL PANEL
- ③ EXPOSED DOWN SPOUT
- ④ CONCRETE 1
- ⑤ CONCRETE 2
- ⑥ CONCRETE 3
- ⑦ NOT USED
- ⑧ SCREENED LOUVER
- ⑨ MAN DOOR
- ⑩ OVERHEAD DOOR
- ⑪ TRANSOM WINDOW
- ⑫ SPANDREL GLASS
- ⑬ ECOROOF
- ⑭ DOUBLE DOOR
- ⑮ ROOF LADDER



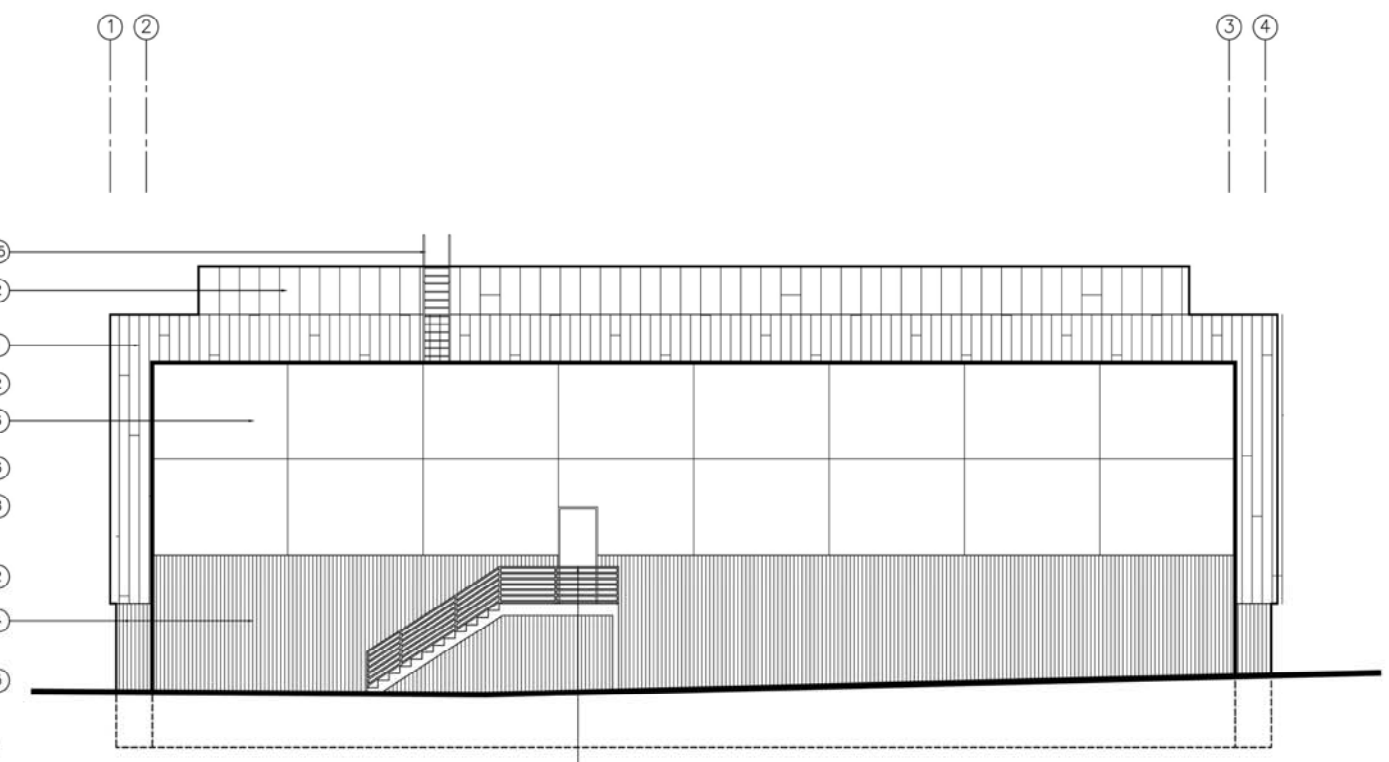
1 NORTH ELEVATION
SCALE: 1/8"-1'-0"



2 EAST ELEVATION
SCALE: 1/8"-1'-0"



3 SOUTH ELEVATION
SCALE: 1/8"-1'-0"



4 WEST ELEVATION
SCALE: 1/8"-1'-0"



DESIGN ADVICE REQUEST - 7/21/2011
CASE # EA11-146569-DA

| No | Date | Description | Appd |
|----|------|-------------|------|
| | | | |
| | | | |
| | | | |

MSA Murray, Smith & Associates, Inc.
Engineers/Planners
121 S.W. Salmon, Suite 900
Portland, Oregon 97204
PHONE 503-225-9010
FAX 503-225-9022

| | |
|-------------|-------------|
| Designed By | Date |
| Drawn By | Program Mgr |
| Checked By | Const Mgr |
| Project Mgr | Design Supr |

Submitted
Reg Prof Engr No 13220

Accepted
PRELIMINARY
Reg Prof Engr No 78692



Randy Leonard
Commissioner

David G. Shaff
Administrator



**FULTON PUMP STATION
REPLACEMENT**

PUMP STATION
EXTERIOR ELEVATIONS

| | |
|-------------|-----------|
| Project No | W01358.DC |
| 1/4 Section | 1S1E22B |
| EXHIBIT | C.5 |
| | 5 of 10 |

G:\PDX_Projects\10\1173\CAD\SHEETS\BDS_DESIGN_ADVICE_SET\10-1173-500-OR-C.3.dwg C.5 7/8/2011 4:32 PM DAK IB.is (LMS Tech)

G:\PDX_Projects\10\1173\CAD\SHEETS\BDS_DESIGN_ADVICE_SET\10-1173-500-OR-C.3.dwg C.6 7/8/2011 4:32 PM DAK IB.is (LMS Tech)



view at restrooms

MWA
Architects



DESIGN ADVICE REQUEST - 7/21/2011
CASE # EA11-146569-DA

| No | Date | Description | Appd |
|----|------|-------------|------|
| | | | |
| | | | |
| | | | |
| | | | |
| | | | |
| | | | |
| | | | |
| | | | |
| | | | |

MSA Murray, Smith & Associates, Inc.
Engineers/Planners
121 S.W. Salmon, Suite 900
Portland, Oregon 97204
PHONE 503-225-9010
FAX 503-225-9022

| | |
|-------------|-------------|
| Designed By | Date |
| Drawn By | Program Mgr |
| Checked By | Const Mgr |
| Project Mgr | Design Supr |

Submitted

Reg Prof Engr No 13229

Accepted

PRELIMINARY

Chief Engr Reg Prof Engr No 78692 Date

PORTLAND WATER BUREAU
FROM FOREST TO FAUCET

Randy Leonard
Commissioner

David G. Shaff
Administrator



FULTON PUMP STATION REPLACEMENT

RENDERING: VIEW AT RESTROOMS

| | |
|-------------|-----------|
| Project No | W01358.DC |
| 1/4 Section | 1S1E22B |
| EXHIBIT | C.6 |
| | 6 of 10 |



view from nevada st.

MWA
Architects



DESIGN ADVICE REQUEST - 7/21/2011
CASE # EA11-146569-DA

| No | Date | Description | Appd |
|----|------|-------------|------|
| | | | |
| | | | |
| | | | |
| | | | |
| | | | |
| | | | |
| | | | |
| | | | |
| | | | |

MSA Murray, Smith & Associates, Inc.
Engineers/Planners
121 S.W. Salmon, Suite 900
Portland, Oregon 97204
PHONE 503-225-9010
FAX 503-225-9022

| | |
|-------------|-------------|
| Designed By | Date |
| Drawn By | Program Mgr |
| Checked By | Const Mgr |
| Project Mgr | Design Supr |

Submitted
Reg Prof Engr No 13220

Accepted
PRELIMINARY
Chief Engr Reg Prof Engr No 76692 Date

PORTLAND WATER BUREAU
FROM FOREST TO FAUCET

Randy Leonard
Commissioner

David G. Shaff
Administrator



FULTON PUMP STATION REPLACEMENT

RENDERING: VIEW FROM NEVADA STREET

| | |
|-------------|-----------|
| Project No | W01358.DC |
| 1/4 Section | 1S1E22B |
| EXHIBIT | C.7 |
| | 7 of 10 |

G:\PDX_Projects\10\1173\CAD\SHEETS\BDS_DESIGN_ADVICE_SET\10-1173-500-OR-C.3.dwg C.7 7/8/2011 4:32 PM DAK IB is (LMS Tech)

G:\PDX_Projects\10\1173\CAD\SHEETS\BDS_DESIGN_ADVICE_SET\10-1173-500-OR-C.3.dwg C.8 7/8/2011 4:32 PM DAK IB is (LMS Tech)



view from north

MWA
Architects



DESIGN ADVICE REQUEST - 7/21/2011
CASE # EA11-146569-DA

| No | Date | Description | Appd |
|----|------|-------------|------|
| | | | |
| | | | |
| | | | |
| | | | |
| | | | |
| | | | |
| | | | |
| | | | |
| | | | |

MSA Murray, Smith & Associates, Inc.
Engineers/Planners
121 S.W. Salmon, Suite 900
Portland, Oregon 97204
PHONE 503-225-9010
FAX 503-225-9022

| | |
|-------------|-------------|
| Designed By | Date |
| Drawn By | Program Mgr |
| Checked By | Const Mgr |
| Project Mgr | Design Supr |

Submitted

Reg Prof Engr No 13229

Accepted

PRELIMINARY

Chief Engr Reg Prof Engr No 76692 Date

PORTLAND WATER BUREAU
FROM FOREST TO FAUCET

Randy Leonard
Commissioner

David G. Shaff
Administrator



FULTON PUMP STATION REPLACEMENT

RENDERING: VIEW FROM NORTH

| | |
|-------------|-----------|
| Project No | W01358.DC |
| 1/4 Section | 1S1E22B |
| EXHIBIT | C.8 |
| | 8 of 10 |



view from south

MWA
Architects



DESIGN ADVICE REQUEST - 7/21/2011
CASE # EA11-146569-DA

G:\PDX_Projects\10\1173\CAD\SHEETS\BDS_DESIGN_ADVISE_SET\10-1173-500-OR-C.3.dwg C.9 7/8/2011 4:32 PM DAK IB.is (LMS Tech)

| No | Date | Description | Appd |
|----|------|-------------|------|
| | | | |
| | | | |
| | | | |
| | | | |
| | | | |

MSA Murray, Smith & Associates, Inc.
Engineers/Planners
121 S.W. Salmon, Suite 900
Portland, Oregon 97204
PHONE 503-225-9010
FAX 503-225-9022

| | |
|-------------|-------------|
| Designed By | Date |
| Drawn By | Program Mgr |
| Checked By | Const Mgr |
| Project Mgr | Design Supr |

Submitted
Reg Prof Engr No 13220
Accepted
PRELIMINARY
Chief Engr Reg Prof Engr No 76692 Date



Randy Leonard
Commissioner
David G. Shaff
Administrator



**FULTON PUMP STATION
REPLACEMENT**
RENDERING: VIEW FROM
SOUTH

| | |
|-------------|-----------|
| Project No | W01358.DC |
| 1/4 Section | 1S1E22B |
| EXHIBIT | C.9 |
| | 9 of 10 |

G:\PDX_Projects\10\1173\CAD\SHEETS\BDS_DESIGN_ADVICE_SET\10-1173-500-OR-C.3.dwg C.10 7/8/2011 4:32 PM DAK 18.1s (LMS_Tech)



view from river bank

MWA
Architects



DESIGN ADVICE REQUEST - 7/21/2011
CASE # EA11-146569-DA

| No | Date | Description | Appd |
|----------|------|-------------|------|
| Revision | | | |

MSA Murray, Smith & Associates, Inc.
Engineers/Planners
121 S.W. Salmon, Suite 900
Portland, Oregon 97204
PHONE 503-225-9010
FAX 503-225-9022

| | |
|-------------|-------------|
| Designed By | Date |
| Drawn By | Program Mgr |
| Checked By | Const Mgr |
| Project Mgr | Design Supr |

Submitted
Reg Prof Engr No 13220
Accepted
PRELIMINARY
Chief Engr Reg Prof Engr No 78692 Date

 **PORTLAND WATER BUREAU**
FROM FOREST TO FAUCET

Randy Leonard
Commissioner
David G. Shaff
Administrator



FULTON PUMP STATION REPLACEMENT
RENDERING: VIEW FROM RIVER BANK

| | |
|-------------|-----------|
| Project No | W01358.DC |
| 1/4 Section | 1S1E22B |
| EXHIBIT | C.10 |
| | 10 of 10 |