

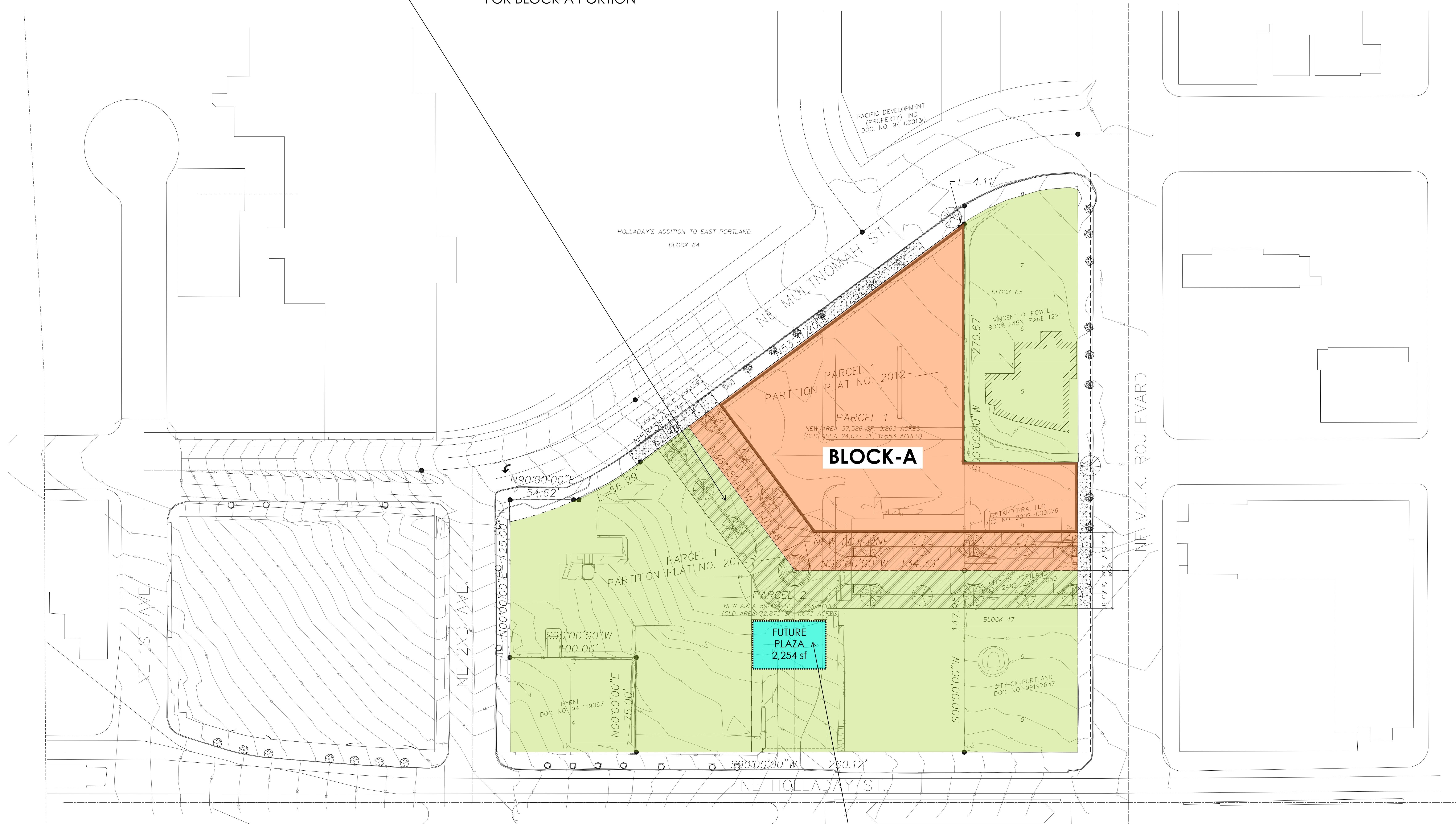
**BLOCK-A
APARTMENTS**

300 NE
MULTNOMAH ST.
PORTLAND, OR
97232

Rembold Companies
Development

NEW PRIVATE DRIVES & WALKWAYS

- DESIGNED TO MEET CITY STREETS STANDARD DIMENSIONS
- USING "LLOYD DISTRICT TRANSPORTATION PROJECTS SPECIAL DISTRICT" AS A DESIGN GUIDELINE
- SIDEWALKS TO SATISFY WALKWAYS REQUIREMENTS FOR BLOCK-A PORTION



| AREAS SUMMARY TABLE | |
|---------------------|-----------|
| | BLOCK-A |
| SITE AREA | 45,320 sf |
| PLAZA | 2,266 sf |

FUTURE PLAZA (PHASED)

BLOCK-A PLAZA AREA PORTION: 2,254 sf FOR REQ'D PLAZA(S), AS SHOWN FOR GENERAL LOCATION REFERENCE ONLY; FINAL SIZE, LOCATION, TBD, AS DESIGNED BY AND INCLUDED WITH FUTURE PHASED DEVELOPMENT(S)

1. SITE PLAN - SUPERBLOCK & REQUIRED PLAZA DIAGRAM FOR D.A.R.

REVISIONS

DATE
August 15, 2012

PROJECT NUMBER
20126125

SHEET TITLE
SUPERBLOCK MOD.
SITE PLAN
DIAGRAM

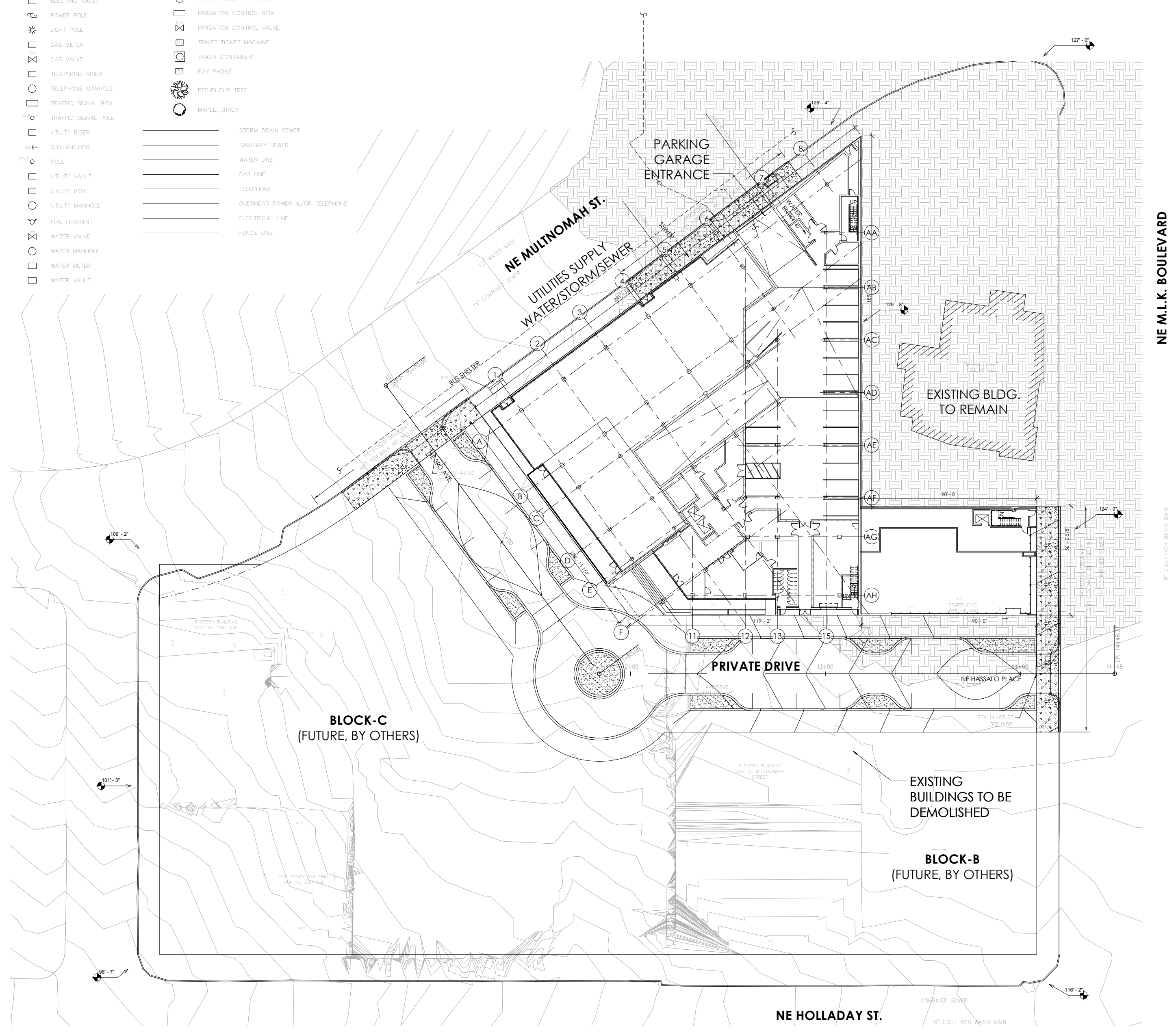
SCALE
1/8" = 1'-0"

**BLOCK-A
APARTMENTS**

300 NE
MULTNOMAH ST.
PORTLAND, OR
97232

Rembold Companies
Development

- | | | | |
|---|----------------------|---|-------------------------------|
| □ | ELECTRIC BOX | ↑ | SIGN |
| □ | ELECTRIC METER | ○ | CLEANOUT |
| ○ | ELECTRIC MANHOLE | ○ | SANITARY SEWER MANHOLE |
| □ | ELECTRIC RISER | ■ | CATCH BASIN |
| □ | ELECTRIC TRANSFORMER | □ | PARKING PAYMENT |
| □ | ELECTRIC VAULT | □ | STORM SEWER MANHOLE |
| ⊕ | POWER POLE | □ | IRRIGATION CONTROL BOX |
| * | LIGHT POLE | □ | IRRIGATION CONTROL VALVE |
| ⊕ | GAS METER | □ | TRIMET TICKET MACHINE |
| ⊕ | GAS VALVE | □ | TRASH CONTAINER |
| ⊕ | TELEPHONE RISER | □ | PAY PHONE |
| ○ | TELEPHONE MANHOLE | ○ | DECIDUOUS TREE |
| □ | TRAFFIC SIGNAL BOX | ○ | MAPLE, BIRCH |
| □ | TRAFFIC SIGNAL POLE | | |
| ○ | UTILITY RISER | — | STORM DRAIN SEWER |
| ○ | GUY ANCHOR | — | SANITARY SEWER |
| ○ | POLE | — | WATER LINE |
| □ | UTILITY VAULT | — | GAS LINE |
| □ | UTILITY BOX | — | TELEPHONE |
| ○ | UTILITY MANHOLE | — | OVERHEAD POWER &/OR TELEPHONE |
| ⊕ | FIRE HYDRANT | — | ELECTRICAL LINE |
| ⊕ | WATER VALVE | — | FENCE LINE |
| ○ | WATER MANHOLE | | |
| ○ | WATER METER | | |
| □ | WATER VAULT | | |



1 Site Plan
1" = 20'-0"

| REVISIONS | DATE | PROJECT NUMBER | SHEET TITLE | SCALE |
|-----------|---------------|----------------|-------------|-------------|
| | July 16, 2012 | 20126125 | SITE PLAN | 1" = 20'-0" |

**BLOCK-A
APARTMENTS**

300 NE
MULTNOMAH ST.
PORTLAND, OR
97232

Rembold Companies
Development



| REVISIONS | DATE | PROJECT NUMBER | SHEET TITLE | SCALE |
|-----------|---------------|----------------|--------------------|--------------|
| | July 16, 2012 | 20126125 | LEVEL 2 FLOOR PLAN | 1/8" = 1'-0" |

A102

36 LEVEL 2 FLOOR PLAN
1/8" = 1'-0"