

0 5' 10' 20' 40' 80'

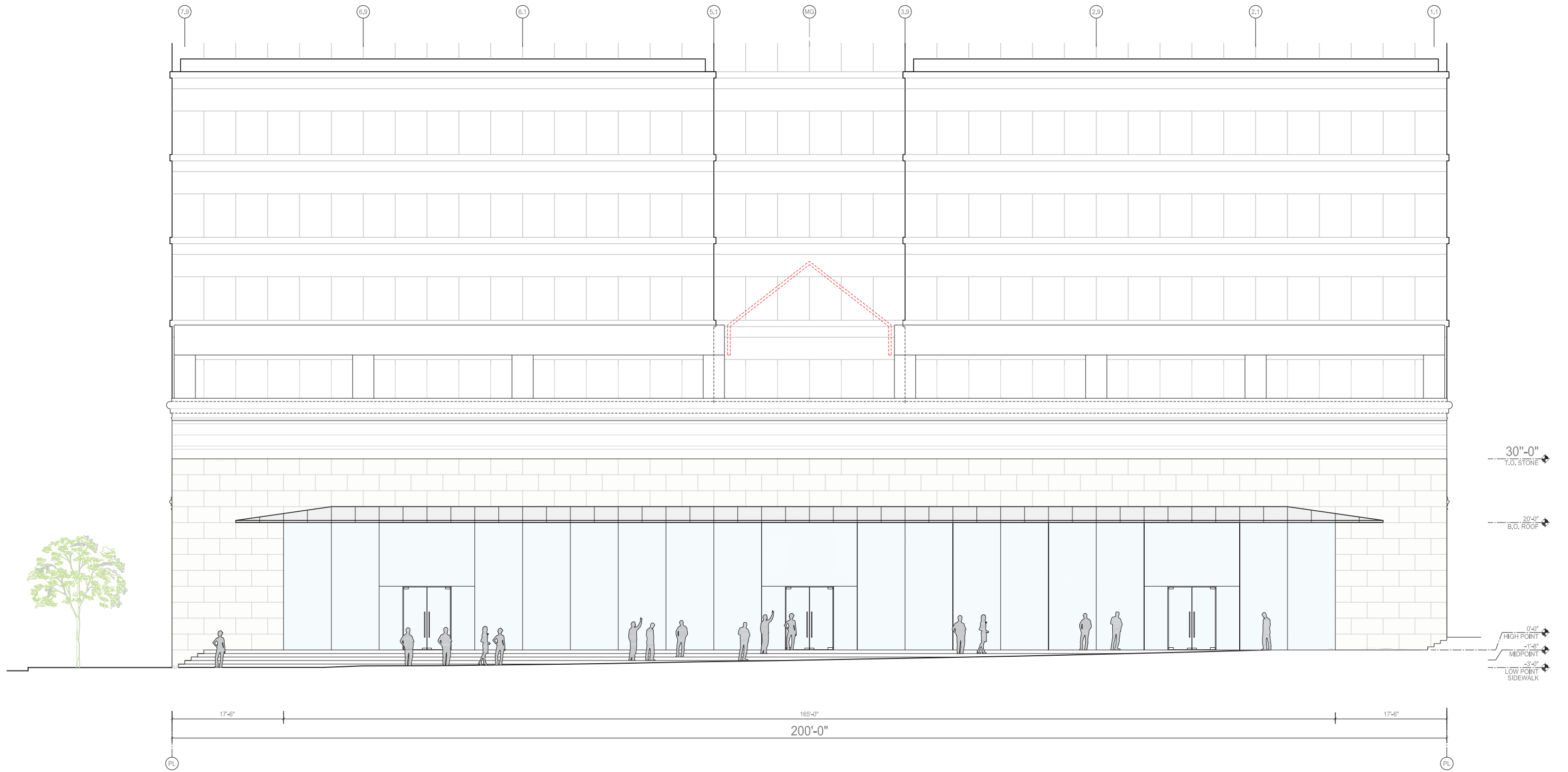
SCALE : 1/32" = 1'-0"

SW Yamhill Street (between Fourth and Fifth Avenue), Portland, OR

March 15, 2012

EAST CONTEXT ELEVATION

A-202a



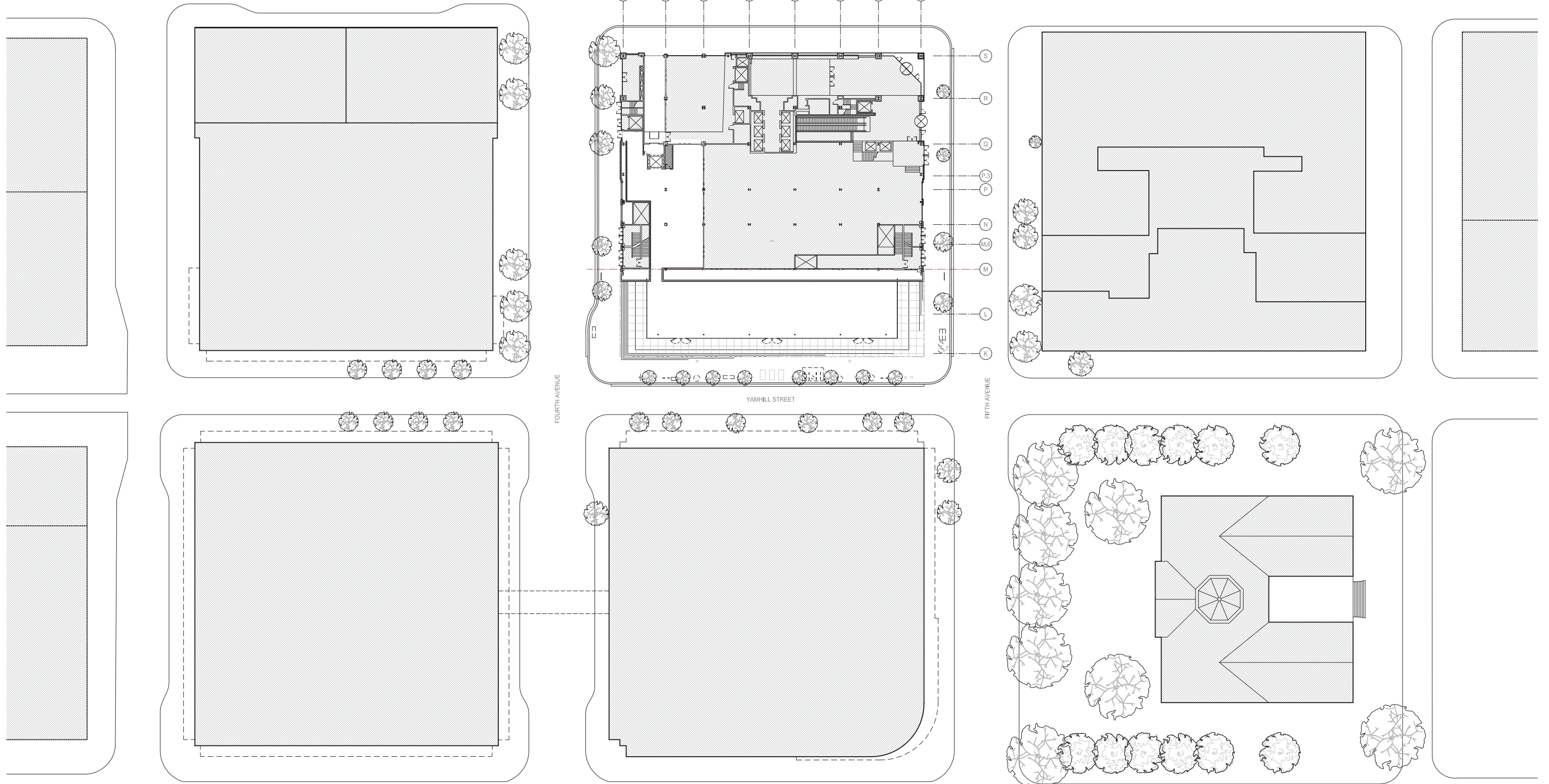
SCALE : 1/16" = 1'-0"

SW Yamhill Street (between Fourth and Fifth Avenue), Portland, OR

March 15, 2012

NORTH BUILDING ELEVATION

A-201



0 4' 8' 20' 40' 80'



SCALE : 1/64" = 1'-0"

SW Yamhill Street (between Fourth and Fifth Avenue), Portland, OR

March 15, 2012

SITE PLAN

A-101