



Portland Watershed Management Plan 2012 Update



ENVIRONMENTAL SERVICES
CITY OF PORTLAND
working for clean rivers



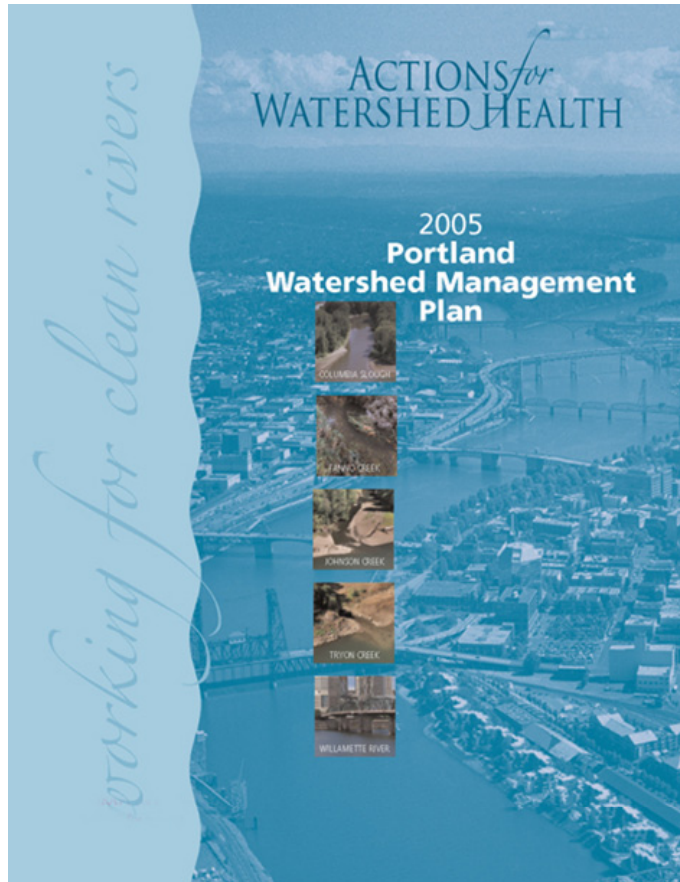
*City Council
May 2, 2012*

Overview

1. Background
2. Progress since 2006
3. Key milestones
4. What's ahead
5. Continued importance
6. Partner testimony



Crystal Springs restoration at Reed College



Watershed Approach

Cost-effective restoration requires integrated, adaptive strategies that address multiple regulatory requirements. Rather than starting with the regulations, Portland focuses on goals and strategies for healthy watersheds.

Portland Watershed Management Plan: 2012 Update



S T R A T E G I E S

**STORMWATER
MANAGEMENT**

REVEGETATION

**AQUATIC and
TERRESTRIAL
ENHANCEMENT**

**PROTECTION
and POLICY**

**OPERATIONS and
MAINTENANCE**

**EDUCATION
INVOLVEMENT
and STEWARDSHIP**

**FOR
IMPROVEMENTS
IN**

M U L T I P L E G O A L S

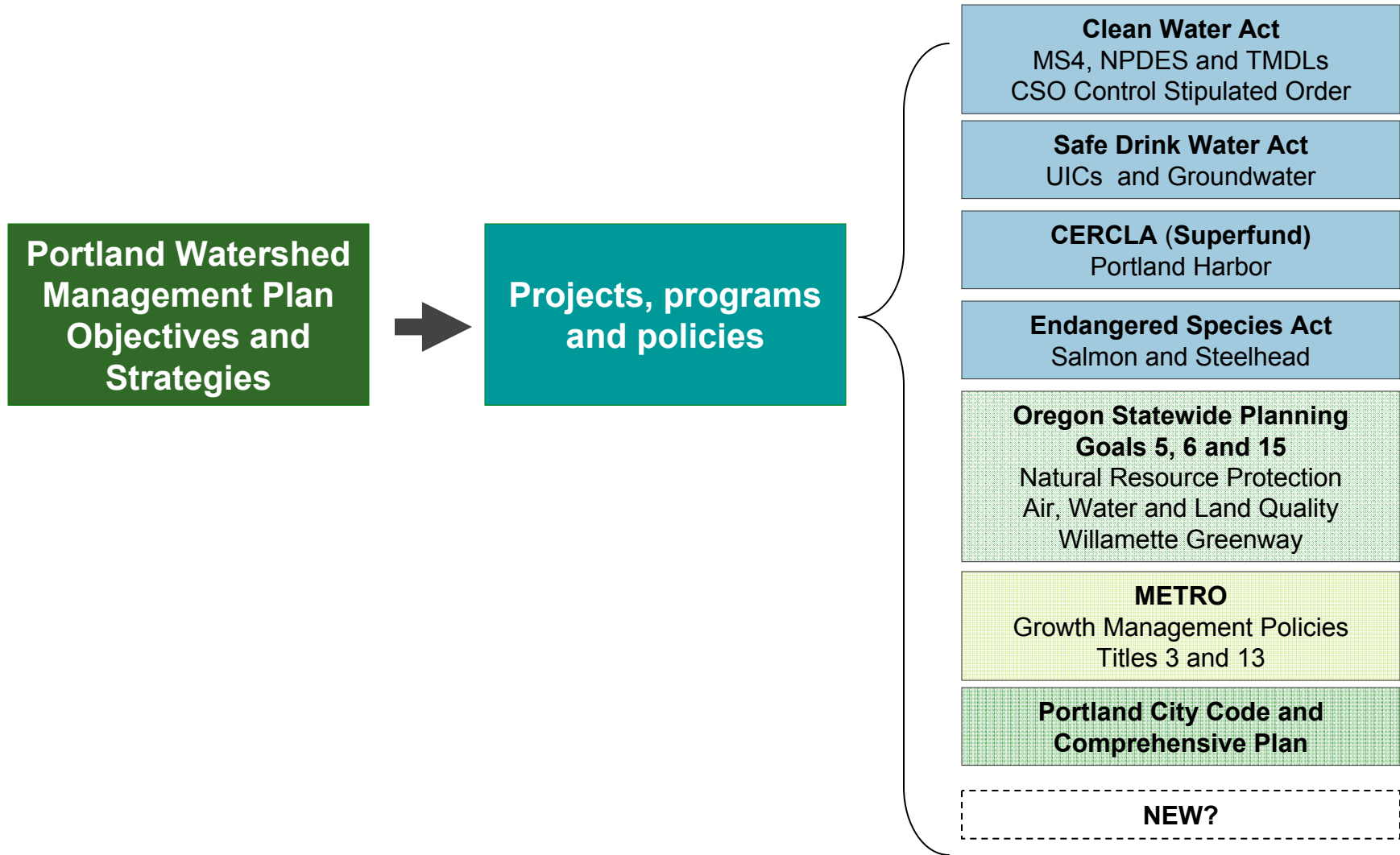
HYDROLOGY
the flow of water over
land, through streams, and
through sewer systems

PHYSICAL HABITAT
places for fish
and wildlife
to thrive

WATER QUALITY
standards for streams
and groundwater that
protect public health and
support fish and wildlife

BIOLOGICAL COMMUNITIES
the population of native
fish, wildlife and
vegetation in an
ecosystem

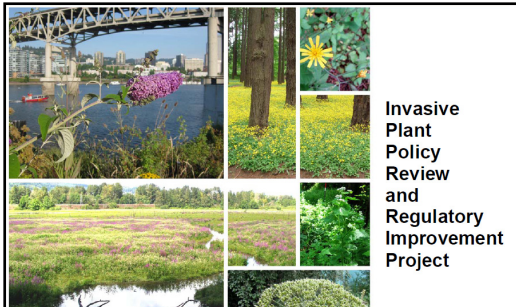
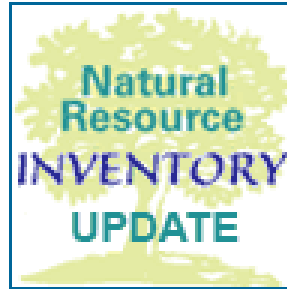
Portland Watershed Management Plan: 2012 Update



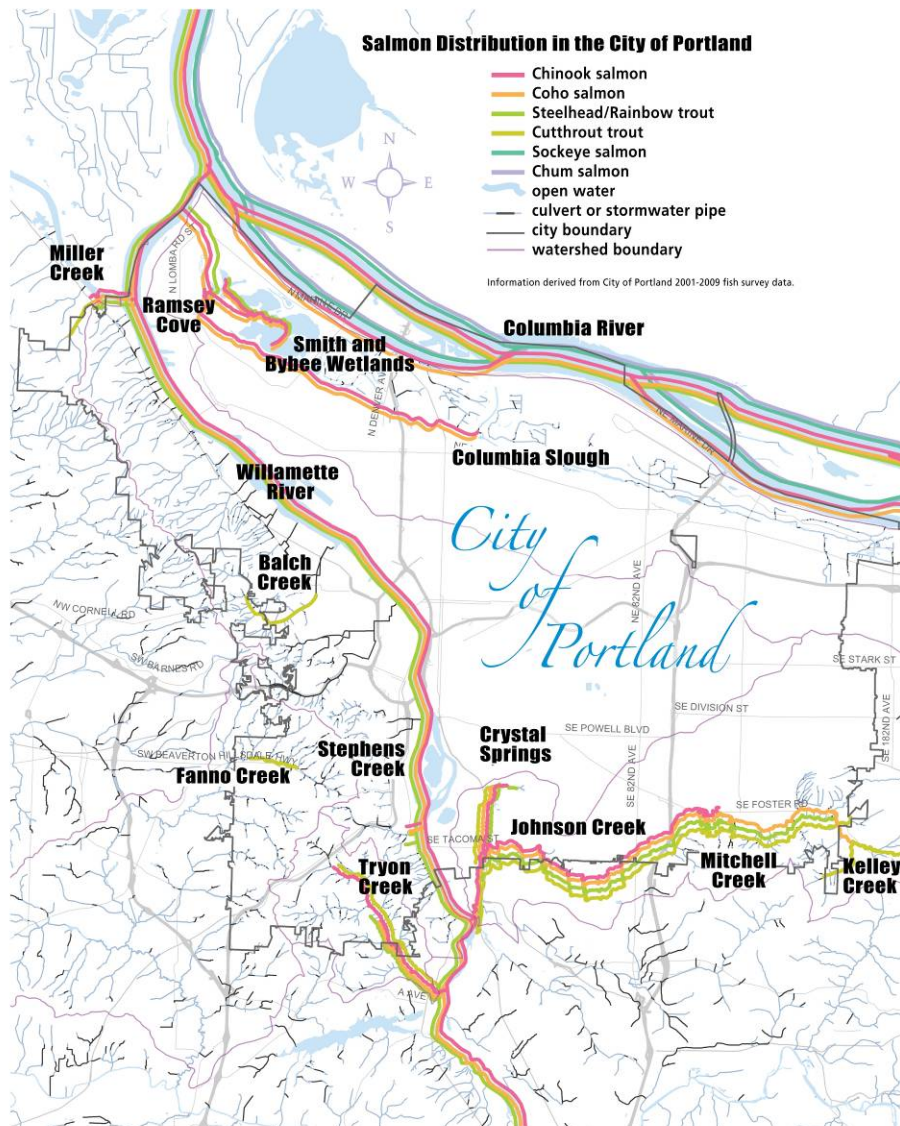
Portland Watershed Management Plan: 2012 Update



A Citywide Effort



Salmon in the City



Progress Since 2006

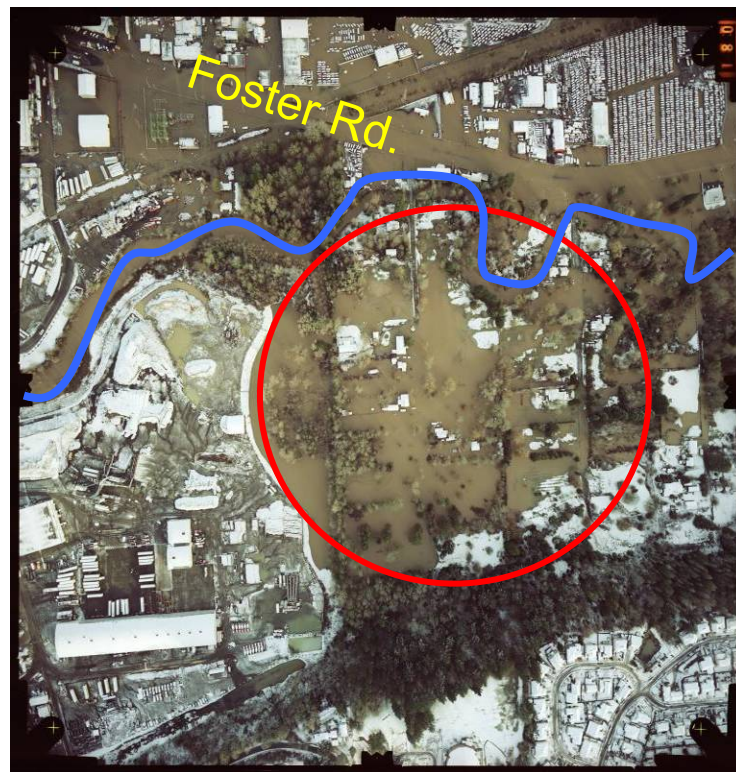
- It works
- It's practical and cost effective
- It builds community and the economy
- It leverages other funds and partners

It works

Johnson Creek Flooding - Before



1996



East Lents project area

East Lents project area - January 2012

EAST PDX NEWS
EAST PORTLAND'S DEFINITIVE NEWS SERVICE

Home About Community Calendar Contact Search...

Flooding disaster averted along Johnson Creek

A story about something that didn't happen? Take a look, and see how high the water rose along SE Foster Road in Lents – and, what the potential flood meant to one business there ...

Be Sociable, Share!
Tweet 5 Like 19 +1 2

East Portland's b
COMMUNITY CALENDAR



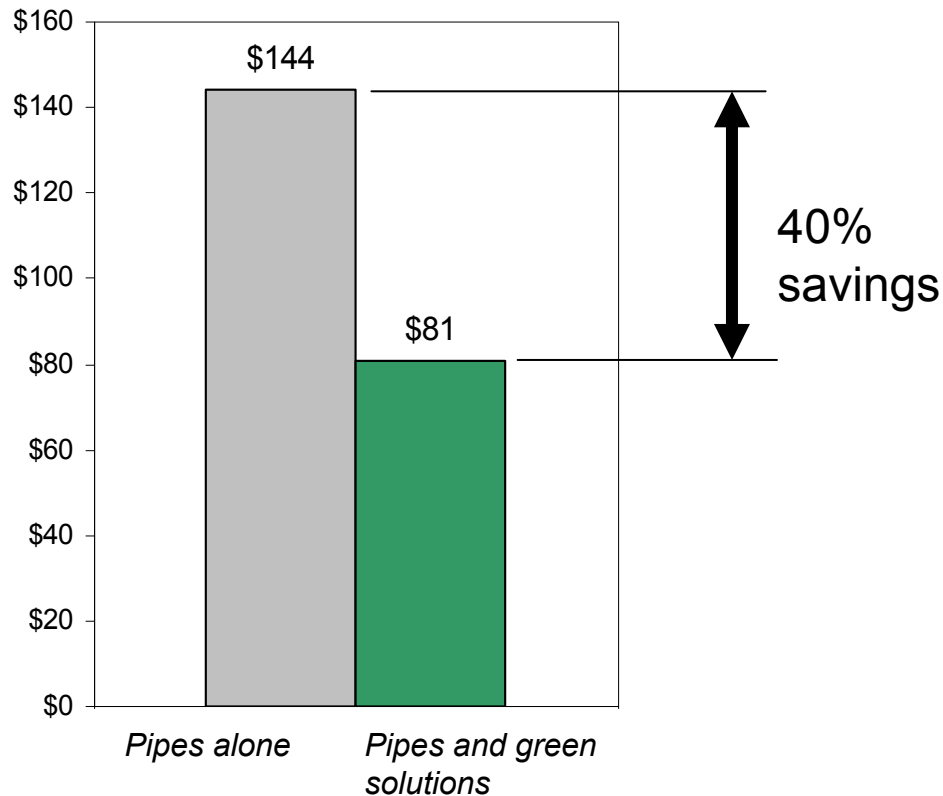
Natural stream flooding in restored area



Flood water

It's practical and cost-effective

Tabor to the River Program

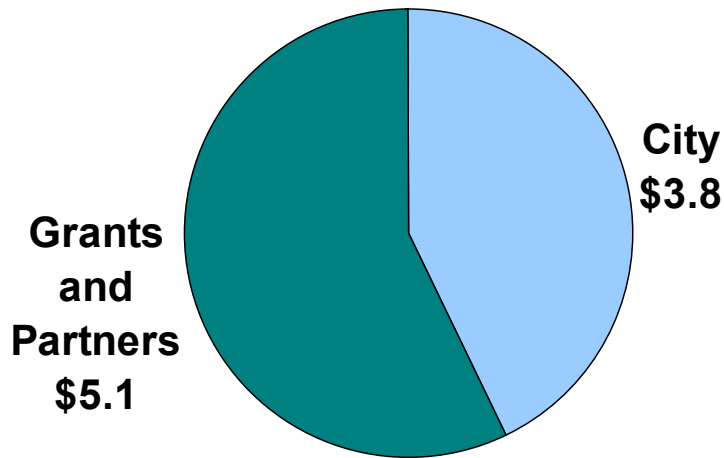


Building community and the economy



Leveraging funds and partners

Crystal Springs Subwatershed Restoration



Before restoration



Steelhead in Crystal Springs, after restoration at SE 28th Ave.

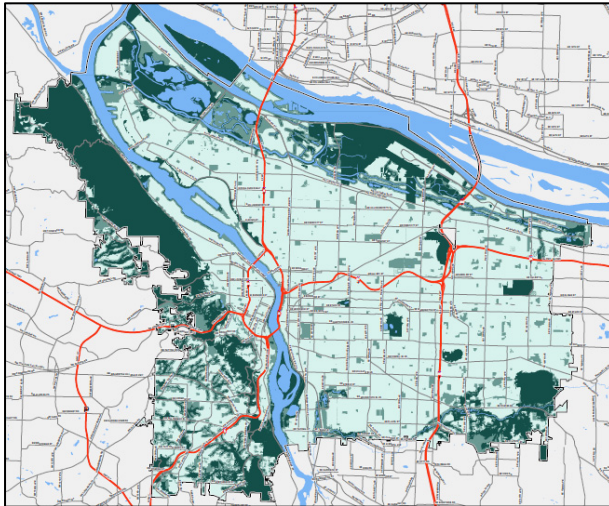
Key Milestones

Monitoring



Key Milestones

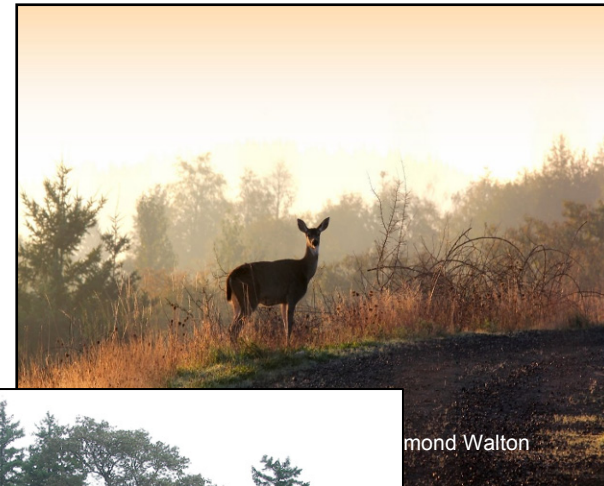
Terrestrial Ecology Enhancement Strategy



Terrestrial resources map



*Red-tailed
hawks love
ecoroofs!*



Diamond Walton



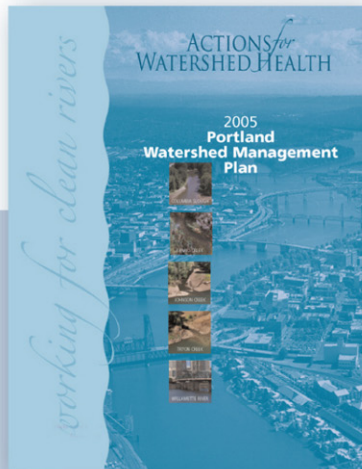
Streaked horned lark: ESA listing candidate



Oregon white oak habitat restoration on Elk Rock Island

Key Milestones

5-Year Strategy



2006 PWMP

Outlines the watershed approach as HOW to do the city's work

Sets watershed health goals and objectives

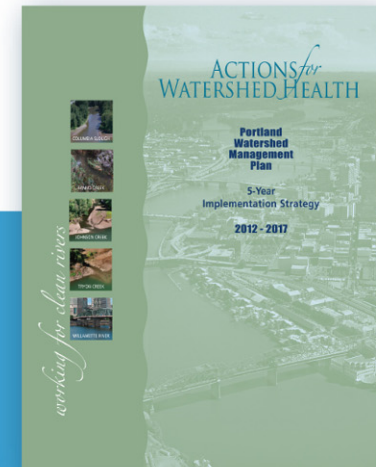
informs
and
supports

Portland
Plan

Climate
Action Plan

Urban Forest
Action Plan

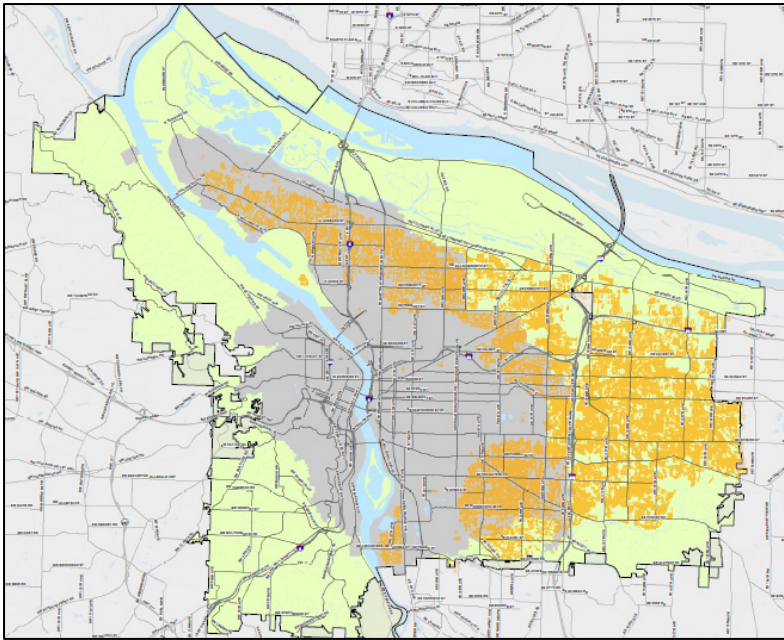
Other plans
and strategies



2012 - 2017 PWMP Implementation Strategy

Brings together actions that are specific to watershed health to convey implementation activities for the next 5 years that will advance watershed health goals

What's Ahead



- Combined sewer system and beyond...
- Continued stream, river and upland restoration projects
- Continuing programmatic approaches

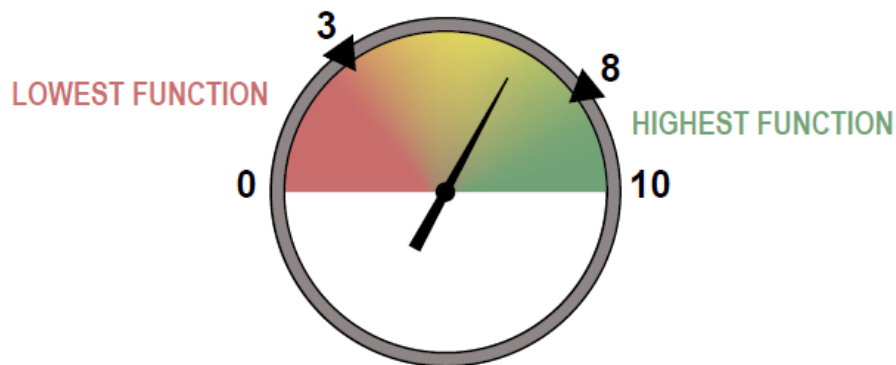


What's Ahead

- Implementing Healthy Connected City
- Watershed Health Index



Stream connection through residential development



Continued Importance

- Meeting regulatory obligations
- Reducing risk to city's infrastructure and providing core services
- Saving rate payer dollars
- Achieving multiple city goals
- Building climate and community resiliency



Partner Testimony

- Susan Anderson, Bureau of Planning and Sustainability
- Mike Abbaté, Portland Parks and Recreation
- Bryan Burch, Neighborhood Tree Steward
- Brian Heather, Solterra Systems
- Ted Labbe, Depave

